

Homer



Colors



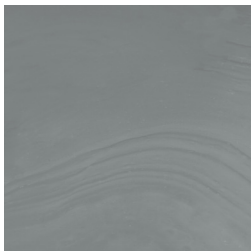
Piraeus
VTL HOPI



Athens
VTL HOAT

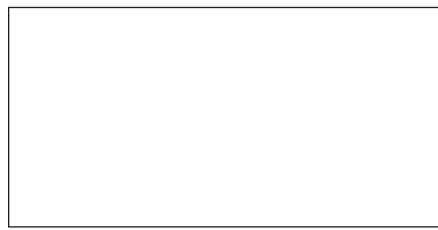


Rhodes
VTL HORH



Eretria
VTL HOER

Sizes



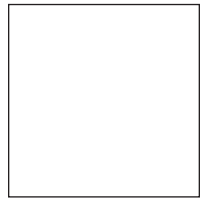
24" x 48" x 9mm
Rectified Matte

- Piraeus
- Athens
- Rhodes
- Eretria



12" x 24" x 9mm
Rectified Matte

- Piraeus
- Athens
- Rhodes
- Eretria



24" x 24" x 9mm
Rectified Matte

- Piraeus
- Athens
- Rhodes
- Eretria



6" x 24" x 9mm
Rectified Matte

- Piraeus
- Athens
- Rhodes
- Eretria

Mosaic



2" x 24" x 9mm
Rectified Matte

- Piraeus VTL HOPI MOSSTAVE
- Athens VTL HOAT MOSSTAVE
- Rhodes VTL HORH MOSSTAVE
- Eretria VTL HOER MOSSTAVE



3" x 8" x 9mm Brick Mosaic
Rectified Matte

- Piraeus VTL HOPI MOSBRICK
- Athens VTL HOAT MOSBRICK
- Rhodes VTL HORH MOSBRICK
- Eretria VTL HOER MOSBRICK

H O M E R

Field Tiles*

SIZE	ACTUAL	THICKNESS	FINISH
24" x 48" Rectified	23.46" x 47.04"	9mm	Matte/Natural
24" x 24" Rectified	23.46" x 23.46"	9mm	Matte/Natural
12" x 24" Rectified	11.68" x 23.46"	9mm	Matte/Natural
6" x 24" Rectified	5.70" x 23.46"	9mm	Matte/Natural

*Not all sizes/trims are available in all colors and finishes

Mosaics & Coordinating Trims*

SIZE	ACTUAL	FINISH
3" x 8" Brick Mosaic	12" x 16"	Matte/Natural
2" x 24" Stave Mosaic	12" x 24"	Matte/Natural
2" x 2" Mosaic	12" x 12"	Matte/Natural
6" x 12" Cove Base	6" x 12"	Matte/Natural
3" x 24" Bullnose	3" x 24"	Matte/Natural

Product Characteristics

	MATTE/NATURAL
Breaking Strength	≥ 400 lbs
Chemical Resistance	Resistant
DCOF	> 0.42
Deep Scratch Resistance - Unglazed	N/A
Frost Resistance	Resistant
Mohs Hardness - EN101	N/A
Water Absorption	≤ 0.5%
Certifications	N/A
Country of Origin	USA
Shade Variation Code	V2

Application**

		WALL	FLOOR
Interior	Residential	•	•
Interior	Commercial	•	•
Interior	Heavy Commercial	•	
Exterior	Residential/Commercial	•	

** These recommendations are not defined by ANSI Standards

Material

Color-Body Porcelain



V2 Slight Variation



DCOF: > 0.42



Made in USA



Water Absorption: ≤ 0.5%



Frost Resistant



Ready Ship Stock



Recommend an offset pattern ≤33%

Request samples.

www.vitlsurfaces.com
samples@vitlsurfaces.com



VITL
SURFACES
COMMERCIAL