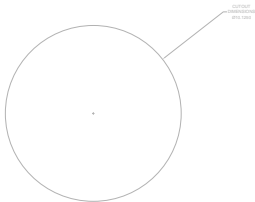
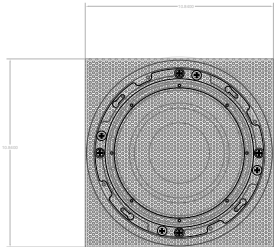
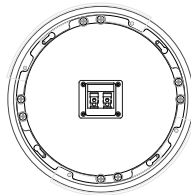
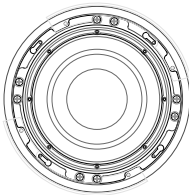
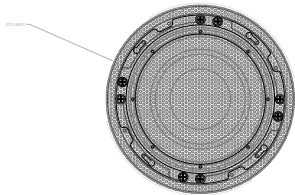
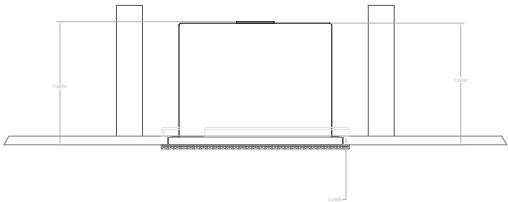


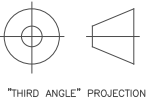
REVISIONS				
ECO	REV.	DESCRIPTION	DATE	APPROVED
	A	RELEASE FOR PRODUCTION	05-23-14	
	B	CHANGED TO EASY MOUNT METHOD	05-08-17	



NOTES:

- 1: MATERIAL - 0.125" THICK 5052 ALUMINUM
UNLESS OTHERWISE SPECIFIED
- 2: FINISH: TBD

<p>PROPRIETARY INFORMATION THE DESIGNS, INFORMATION, AND DATA CONTAINED HEREIN ARE PROPRIETARY AND ARE SUBMITTED IN CONFIDENCE, AND SHALL NOT BE DISCLOSED, USED OR DUPLICATED IN WHOLE OR IN PART, FOR ANY PURPOSES WHAT- SOEVER OF JAMES LOUDSPEAKER LLC, 535 AIRPARK RD, NAPA, CA 94558. THIS LEGEND SHALL BE MARKED ON ANY REPRODUCTIONS HEREOF IN WHOLE OR IN PART. RECEIPT OF THIS DOCUMENT SHALL BE DEEMED TO AN ACCEPTANCE OF THE CONDITIONS SPECIFIED HEREIN.</p>		JAMES LOUDSPEAKER	
		QXC8S-R/S	
		EXTERNAL DIMENSIONS	
		PIN: QXC8S-R/S	DWR #: 140523-N101
		REVISED BY: C. NEWMAN	
		DRAWN BY: M. PARK	FILE:
		DATE: 05-23-14	SCALE:
		APPROVED:	
		DRAFTING APPROVED:	
		DO NOT SCALE DRAWING	
<p>DO NOT SCALE DRAWING DRAWING NOT TO BE USED FOR CNC TOLERANCES: ANG: $\pm .5^\circ$ FRACT: $\pm 1/32$ DECIMALS: XX $\pm .01$.XXX $\pm .005$</p>		REVISION: B	
		SHEET 1 OF 1	



"THIRD ANGLE" PROJECTION