

# BLACK DIAMOND®

Project Name: \_\_\_\_\_

Location: \_\_\_\_\_

Item #: \_\_\_\_\_

Qty: \_\_\_\_\_

## Black Diamond Refrigerated Salad/Sandwich Prep Table, 2 Solid Doors, 18.4 Cu. Ft., in Stainless Steel

### USSL-2D/60



Elevate your foodservice operation with the Black Diamond Refrigerated Salad and Sandwich Prep Table, designed for commercial durability and reliable performance. Featuring a robust stainless steel body, solid doors, and ample 18.4 Cu. Ft. storage, this unit keeps ingredients at optimal freshness within a 33° to 40°F range. The eco-friendly R290 refrigerant and fully automatic controller simplify operation and ensure high energy efficiency, while the easy-to-clean surfaces and convenient workspace enhance productivity. Backed by Black Diamond's exceptional warranty, this prep table is a valuable asset for any deli, café, or restaurant.

### FEATURES AND CONSTRUCTION

- Boasting an 18.4 Cu. Ft. capacity, this prep table is perfect for storing a variety of ingredients
- Equipped with a 0.75 horsepower compressor for efficient cooling
- Constructed with durable stainless steel for long-lasting use
- Maintains a temperature range of 33° to 40°F for optimal food preservation
- Utilizes eco-friendly R290 refrigerant for efficient cooling
- Operates on 115V with a NEMA-5-15P plug type for easy installation
- Features two adjustable wire shelves for flexible storage options
- Includes four casters for mobility and easy repositioning
- Includes a polyethylene cutting board for a convenient prep workspace

### ELECTRIC

115VV / 60Hz / 1Ph

Cord Length (Inches): 98.40"

Plug Type: NEMA 5-15P

Cord set included

NEMA 5-15P



### 3RD PARTY APPROVALS



### WARRANTY (USA / CANADA)

Two (2) Year Limited Warranty on Parts and Labor, Five (5) Year Warranty on Compressor and Evaporator

Contact us for details at 1.877.368.2797



### STORAGE CAPACITY

- Cubic Feet: 18.4 Cu. Ft.

### TEMPERATURE

- Holding Temperature (Fahrenheit): 33° - 40°

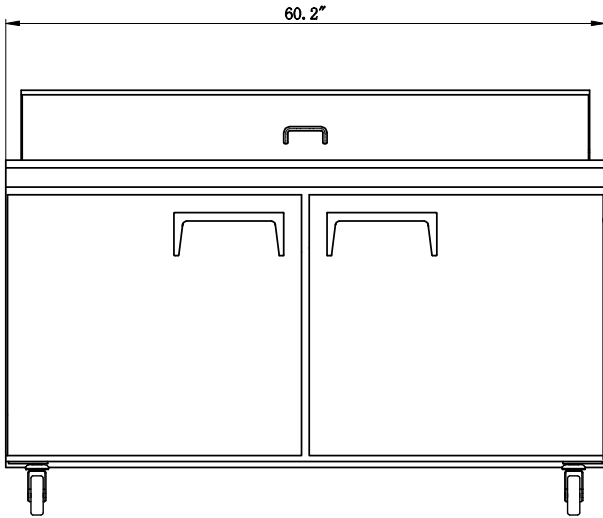
These models are designed to operate in an environment where temperature and humidity do not exceed 75°F (24°C) and 55% relative humidity



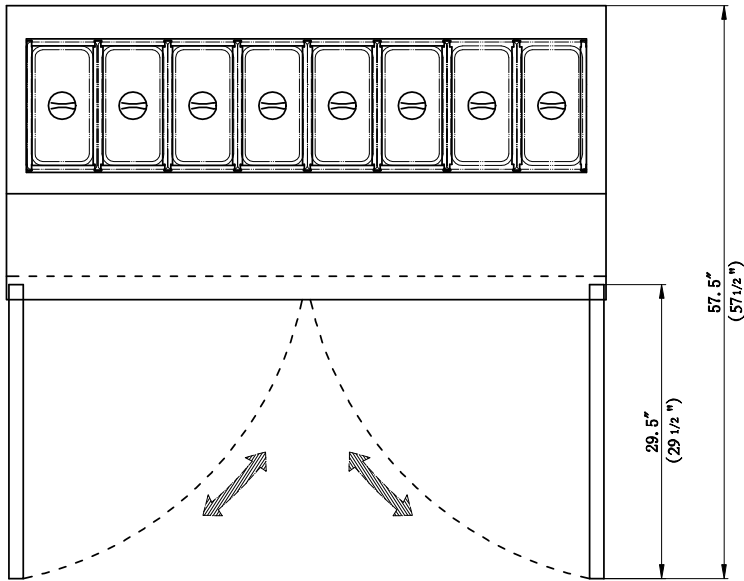
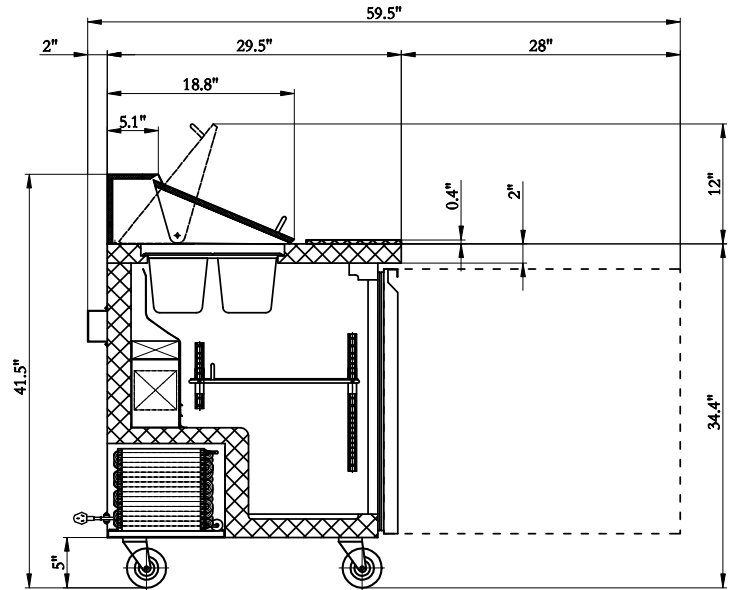
# Black Diamond 2 Door Refrigerated Salad/Sandwich Prep Table

USSL-2D/60

FRONT



SIDE



TOP

## Prep Table

Doors	Shelves	Amps	HP	Refrigerant	Capacity	Assembled Dimensions (in)	Item Weight (lbs)	Shipping Weight (lbs)
2	2	5.4A	1/4	R290 4.236	18.4 Cu. Ft.	60.20" x 29.50" x 42.30"	319.0	416.0

Due to periodic changes in designs, methods, procedures, policies and regulations, the specifications contained in this document are subject to change without notice. While we exercise good faith efforts to provide information that is accurate, we are not responsible for errors or omissions in information provided or conclusions reached as a result of using the specifications. By using the information provided, the user assumes all risks in connection with such use.