

CONTINENT DP

Digital Porcelain

GLAZED PORCELAIN FLOOR & WALL TILE



floridatile

CONTINENT DP

Digital Porcelain

shown on front: **29927 12x12** Sierra Clay

Continent^{DP} features strong graphics and tones that meld into powerful statements. Natural colors in calm shades are complemented by a strong surface texture reminiscent of slate with long linear clefing. All elements work together to create a rustic yet refined aesthetic.

Field tile formats are 12x12 and 12x24 pressed as well as a 6x6 cut. All formats are available in three earth-toned color options. Delta Haze is a warm gray; Sierra Clay features tones of browns and reds; and Coastal Sand is true to its name with elements of

light tan and cream throughout the graphic. A chair rail, chair rail stop, and bullnose in each color complete the line.

Continent^{DP} is appropriate for all applications in both residential and commercial settings. It is made in the USA in our Green Squared[®] certified Advanced Manufacturing Center in Lawrenceburg, KY, and includes pre-consumer recycled content. It meets the DCOF AcuTest[®] requirements to be installed in wet areas and is GREENGUARD[®] and Porcelain Tile certified.

below: **29914 12x12 & 12x24** Delta Haze



COLOR VARIATION

Formats Available: 6x6, 12x12, 12x24 & M12

COASTAL SAND



SIERRA CLAY

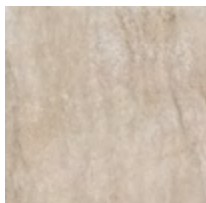


DELTA HAZE





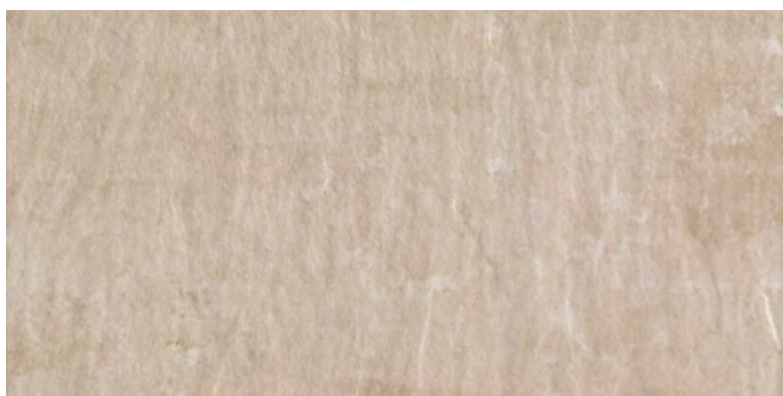
COASTAL SAND



29936 6x6
Coastal Sand



29936 12x12
Coastal Sand



29936 12x24
Coastal Sand



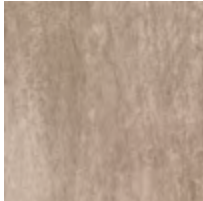
29936/M12
Coastal Sand 25pc Mosaic



29936/CR2x12
Coastal Sand Chair Rail

29936/CR2x1
Chair Rail Stop (not shown)

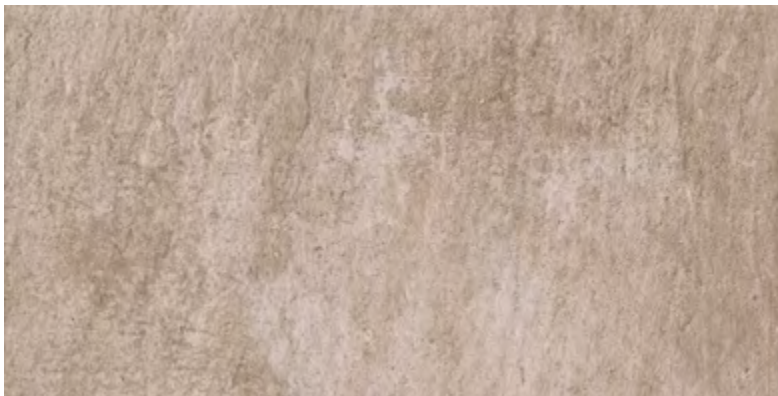
SIERRA CLAY



29927 6x6
Sierra Clay



29927 12x12
Sierra Clay



29927 12x24
Sierra Clay



29927/M12
Sierra Clay 25pc Mosaic



29927/CR2x12
Coastal Sand Chair Rail
29927/CR2x1
Chair Rail Stop (not shown)

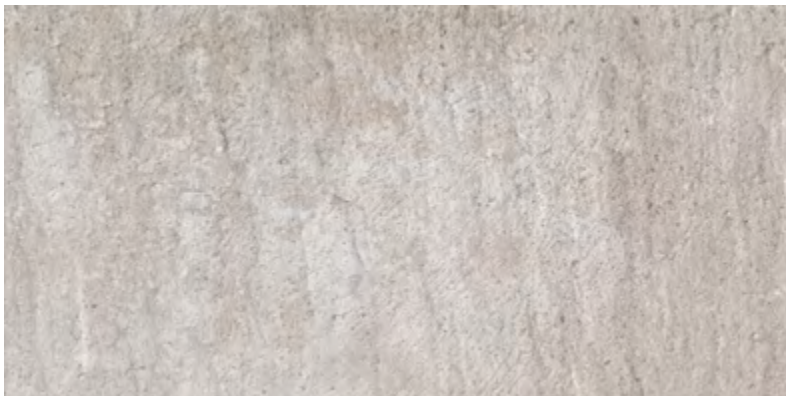
DELTA HAZE



29914 6x6
Delta Haze



29914 12x12
Delta Haze



29914 12x24
Delta Haze



29914/M12
Delta Haze 25pc Mosaic



29914/CR2x12
Delta Haze Chair Rail
29914/CR2x1
Chair Rail Stop (not shown)



above: **29927 12x12** Sierra Clay

| Porcelain Technical Data Properties (Floor) | ASTM® | ANSI® | Results ¹ |
|--|------------|------------|---|
| DCOF AcuTest®² | A137.1 | ≥ 0.42 | Pass |
| Surface Hardness | Mohs Scale | N/A | 7 Mohs |
| Break Strength | C-648 | ≥ 250 lbf. | ≥ 365 lbf. avg. |
| Water Absorption | C-373 | ≤ 0.5% | ≤ 0.5% ³ |
| Intended Use⁴ | N/A | N/A | Residential Light Commercial Heavy Commercial |

¹ Values are offered in good faith as being accurate and typical of normal production. Due to the natural variation of raw materials and manufacturing processes, the values of the purchased product for any particular installation may vary.

² ANSI® A137.1 standard, ceramic tiles selected for level interior spaces expected to be walked upon when wet must have a minimum wet DCOF AcuTest® value of 0.42.

³ Average production value.

⁴ Please visit www.floridatile.com/intended-use for further details.

Typical Uses

Continent® glazed porcelain floor and wall tile is appropriate for residential and commercial wall, countertop, backsplash, and most floor applications.

Notice: Not all flooring products are suitable for wet areas, specialized applications, or commercial use. Please refer to the American National Standard Specifications for Ceramic Tile (ANSI® A137.1) for ceramic, stone, and glass installation for specific usage and installation information.

This Florida Tile product will contribute to USGBC LEED® points and the ANSI® approved NAHB® Green Building Points.

Color, texture, and finish variations may occur due to the nature of the product.

Color reproductions in this printed piece may vary from actual tile colors. Final selection should be made from actual tile samples.

| Field Tile Nominal Size (in) ¹ | Metric (cm) | Pcs./Sq Ft ² | Thickness ³ | Edge |
|--|-------------|-------------------------|------------------------|------------------|
| 6x6 | 15x15 | 4 | 8mm | Cut ⁴ |
| 12x12 | 30x30 | 1 | 8mm | Pressed |
| 12x24 | 30x60 | .5 | 9mm | Pressed |

¹ These values may vary from lot to lot.

² These values are based on actual sizes including the grout joint.

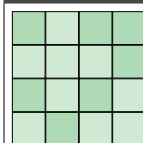
³ May not apply to textured surfaces or tiles with uneven back patterns such as mesh mounted mosaics.

⁴ In order to provide as many size formats as possible, some sizes may be originally pressed as larger formats and then professionally cut to size.

| Trim | Shape | SKU | Nominal Size (in) ¹ | Metric (cm) |
|-------------------------|-------|--------|--------------------------------|-------------|
| Bullnose | | P43C9 | 3x12 | 7.5x30 |
| Bullnose | | S4669 | 6x6 | 15x15 |
| Outside Corner | | SN4669 | 6x6 | 15x15 |
| Cove Base | | P36C9 | 6x12 | 15x30 |
| Cove Base Corner | | PB3169 | 1x6 | 2.5x30 |

¹ These values may vary from lot to lot.

Color Variation



V2 Slight Variation

Clearly distinguishable differences in texture and/or pattern with similar colors.

