

150# Malleable Fittings

Specification Sheet

NON-CHINA



- Black & Galvanized
- Meets or exceeds all applicable ASTM and ANSI standards
- Stocked from 1/8" through 6" diameters
- 100% pressure tested before leaving the factory
- UL and FM approved



NON-CHINA

150# Malleable Fittings

Specification Sheet

STANDARD SPECIFICATION (CLASS 150)

Standard	American	British	German
Design	ANSI/ASME B 16.3 ANSI/ASME B 16.14 ANSI/ASME B 16.39	BS EN 10242 BS 143 & 1256	DIN EN 10242
Thread	ANSI/ASME B 1.20.1	ISO 7, ISO 228 ANSI/ASME B 1.20.1	ISO 7, ISO 228
Material	ASTM A197	BS EN 1562	DIN EN 1562
Galvanizing	ASTM A153	BS EN ISO 1461	DIN EN ISO 1461
Type	BANDED	BANDED	BEADED

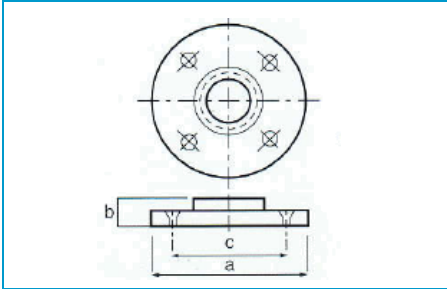


NON-CHINA

150# Malleable Fittings

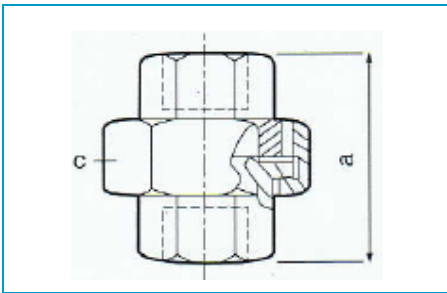
Specification Sheet

Floor Flange



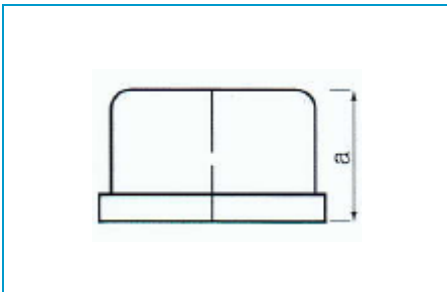
Size	1/4	3/8	1/2	3/4	1
A	2.36	2.68	2.99	3.25	3.80
B	0.34	0.47	0.49	0.55	0.75
C	1.58	1.81	2.06	2.29	2.99
Size	1-1/4	1-1/2	2		
A	4.00	4.44	5.09		
B	0.75	0.93	1.00		
C	3.02	3.31	3.94		

Union



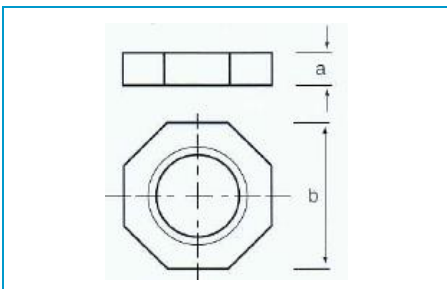
Size	1/8	1/4	3/8	1/2	3/4	1
A	1.30	1.48	1.65	1.97	2.03	2.30
C	0.99	1.22	1.46	1.65	1.93	2.32
Size	1-1/4	1-1/2	2	2-1/2	3	4
A	2.36	2.62	3.03	3.31	3.70	4.53
C	2.72	3.07	3.66	4.49	5.00	6.30

Cap



Size	1/8	1/4	3/8	1/2	3/4	1	1-1/4
A	0.53	0.63	0.74	0.87	0.97	1.16	1.28
Size	1-1/2	2	2-1/2	3	4	5	6
A	1.33	1.45	1.70	1.80	2.08	2.32	2.55

Locknut



Size	1/4	3/8	1/2	3/4	1	1-1/4
A	0.30	0.32	0.35	0.39	0.43	0.47
B	0.87	1.06	1.26	1.50	1.81	2.21
Size	1-1/2	2	3	4	5	6
A	0.51	0.57	0.75	0.87	0.87	1.18
B	2.48	3.07	4.45	5.71	6.50	8.27