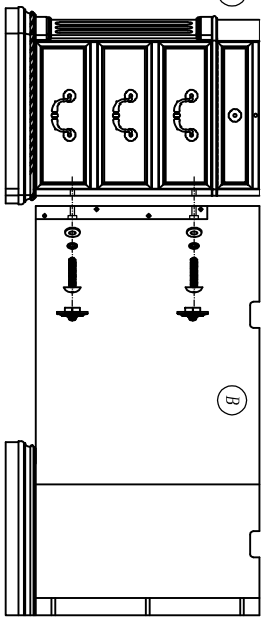
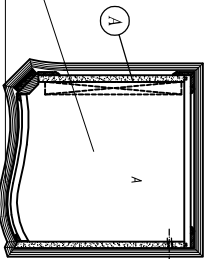


7-9167

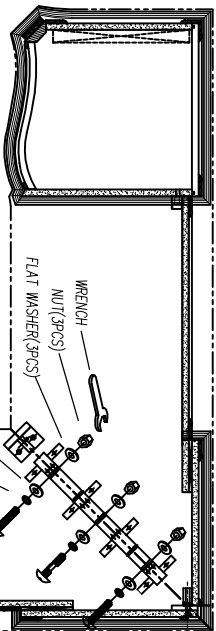
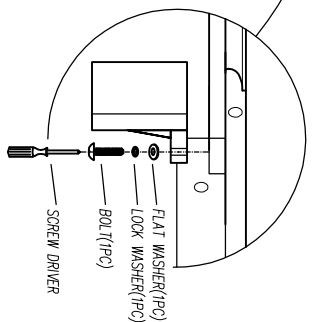
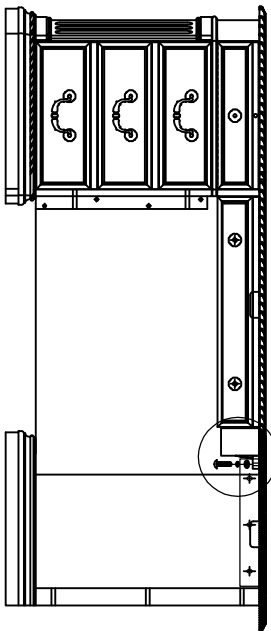
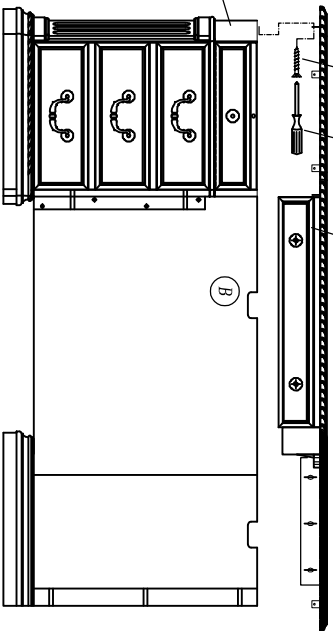


FLAT WASHER(2PCS) LOCK WASHER(2PCS)

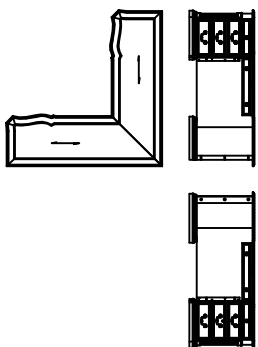
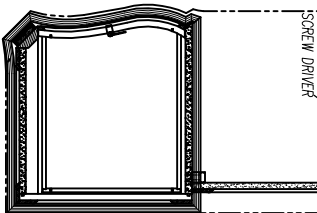


BOLT(2PCS) SCREW DRIVER COVER(2PCS)

SCREW(2PCS) SCREW DRIVER



FLAT WASHER(2PCS) LOCK WASHER(2PCS) BOLT(2PCS) SCREW DRIVER COVER(2PCS)



ASSEMBLY INSTRUCTIONS

- (1) CONNECT LEFT PEDESTAL (A) WITH LEFT BACK PANEL (B) USING BOLTS AND WASHERS.
- CONNECT RIGHT PEDESTAL (C) WITH RIGHT BACK PANEL (D) USING BOLTS AND WASHERS.
- (2) CONNECT LEFT TOP (E) TO LEFT PED AND BACK PANEL WITH SCREWS.
- CONNECT RIGHT TOP (F) TO RIGHT PED AND BACK PANEL WITH SCREWS.
- (3) CONNECT RIGHT AND LEFT PARTS USING BOLTS AND WASHERS.

