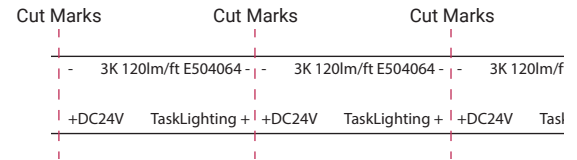
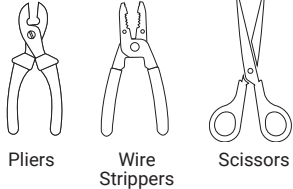


NOTE

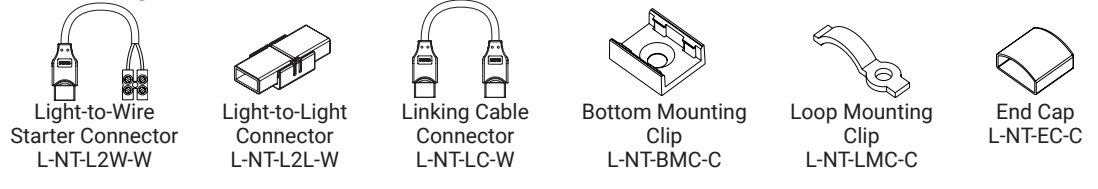
- DO NOT connect low-voltage LED Neon Flexible Lighting to high-voltage power.
- Do not over tighten any screws
- Maintain polarity on all connections, +DC24V to Red and (-) to Black.
- Maximum 16.4 ft. of Neon Flexible Lighting can be connected together.
- For shorter lengths of Neon Flexible Lighting, cut with scissors at cut marks where a black dotted line is shown. **CUT AT DESIGNATED CUT LINES ONLY.**



Tools Needed

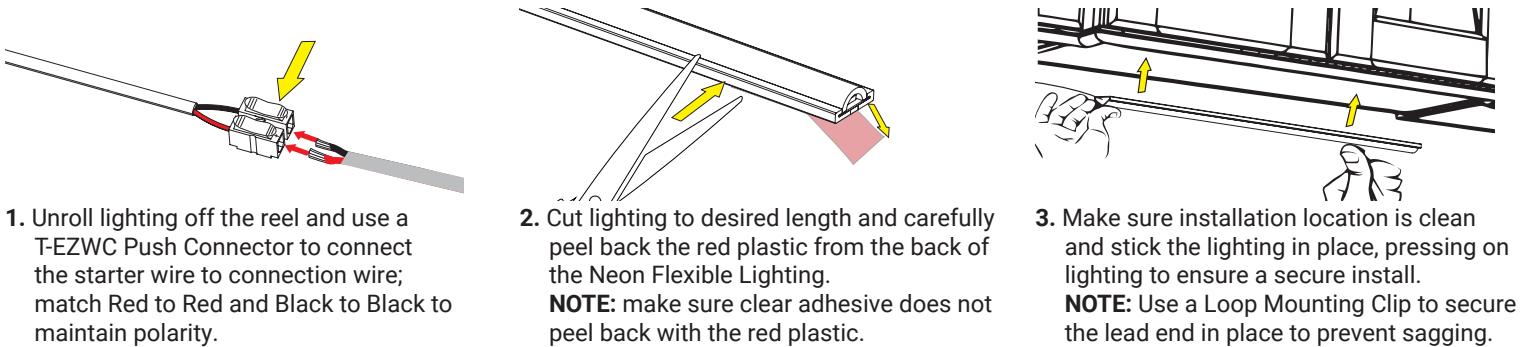


Product Legend



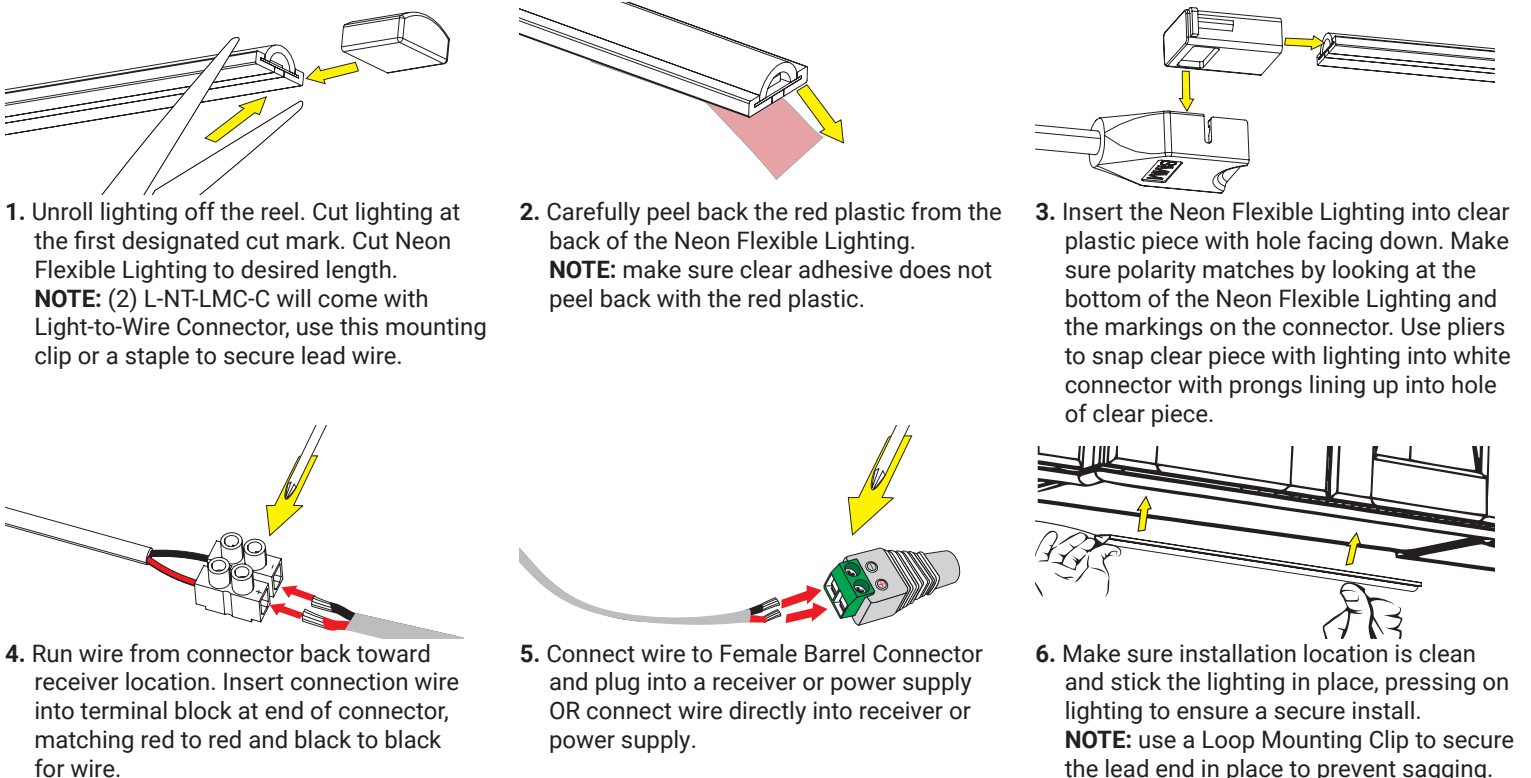
Connecting Neon Flexible Lighting—Top Bend to a T-EZWC Connector

NOTE: it is recommended to use an End Cap at each connection point not being reconnected.



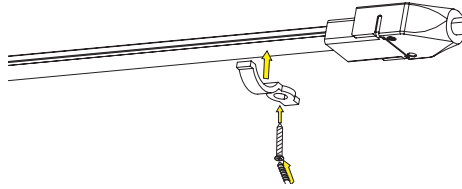
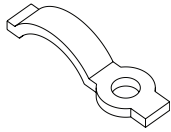
Connecting Neon Flexible Lighting—Top Bend to a Light-to-Wire Connector

NOTE: it is recommended to use an End Cap at each connection point not being reconnected.



Using Loop Mounting Clips for Installation

NOTE: it is recommended to use an End Cap at each connection point not being reconnected.

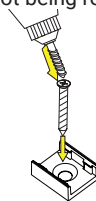
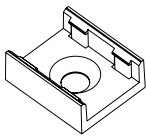


1. Follow instructions on front page to install Neon Flexible Lighting.

2. It is recommended to use a Loop Mounting Clip every 24"–36" to secure lighting. **NOTE:** make sure clip and screw do not pierce Neon Flexible Lighting.

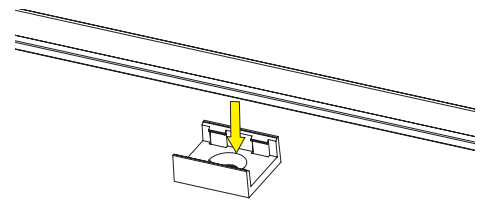
Using Bottom Mounting Clips for Installation

NOTE: it is recommended to use an End Cap at each connection point not being reconnected.



1. It is recommended to use a Bottom Mounting Clip every 24"–36" to secure lighting.

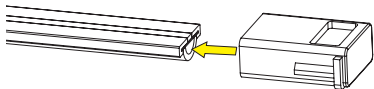
2. Use a drill or screwdriver to install Bottom Mounting Clips in desired locations



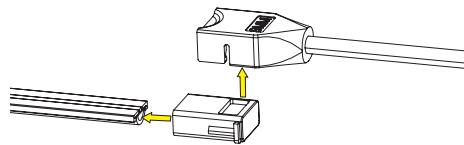
2. Follow instructions on front page to install the Neon Flexible Lighting; make sure lighting snaps into Bottom Mounting Clips for secure installation.

Using a Linking Cable Connector

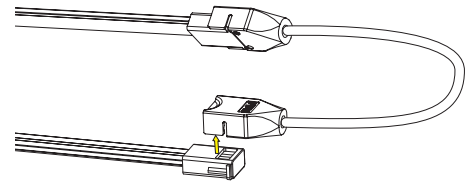
NOTE: it is recommended to use an End Cap at each connection point not being reconnected.



1. Insert cut piece of Neon Flexible Lighting into clear plastic piece of connector, making sure the side with the hole faces down. **NOTE:** (2) L-NT-LMC-C will come with Linking Cable, use this mounting clip or a staple to secure lead wire.



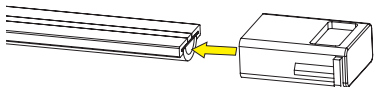
2. Snap clear piece with lighting into one side of connector, making sure prongs line up with hole of clear piece. **NOTE:** Use pliers as needed to snap clear piece into place for secure connection.



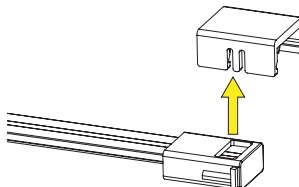
3. Repeat steps 1 and 2 for the other side of connector. Use a loop mounting clip or staple to secure linking cable when jumping cabinets.

Using a Light-to-Light Connector

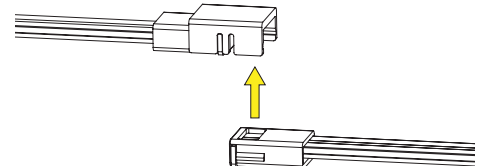
NOTE: it is recommended to use an End Cap at each connection point not being reconnected.



1. Insert cut end of the first piece of Neon Flexible Lighting into clear plastic piece of connector, making sure the side with the hole faces down.



2. Snap clear piece with lighting into one side of connector, making sure prongs line up with hole of clear piece. **NOTE:** Use pliers as needed to snap clear piece into place for secure connection.



3. Take the cut starting end of the second piece and repeat steps 1 and 2 on the other side of connector.