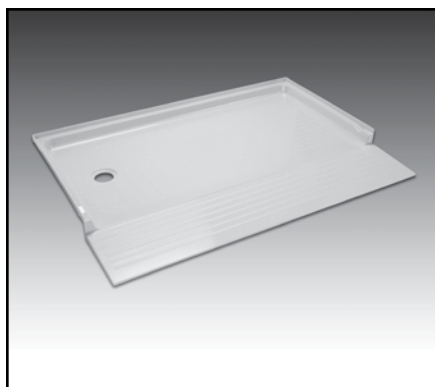




MUSTEE
Preferred by the "Pros"

CareGiver® 360 Barrier-Free Shower Floor with 360.100 Entry Ramp

SEE PAGES 2-5 FOR A LIST OF ACCESSORIES!



Design features:

- Produced from high-grade, reinforced, molded fiberglass for optimum strength and impact resistance using matched metal molds under heat and pressure.
- Ideal for new or remodel projects...fits DURAWALL® Shower Walls (see Accessories section) as well as ceramic tile or preformed wall kit.
- Fits 60" wide by 30" deep alcove.
- Drain hole is offset 8-1/2" x 15" for connection to 2" DWV piping.
- 360.100 Entry Ramp (order separately) creates curbless entry and exit for wheelchairs and walkers.
- Slip resistant surface.
- Optional drain kit is available for connecting to existing 1-1/2" bathtub DWV line.
- Available in both LH and RH drain locations.
- Available in white or bone.
- Smooth, colorfast semi-gloss finish, resists scuffs.
- Mold and mildew-resistant...easy to clean.

Code Accepted

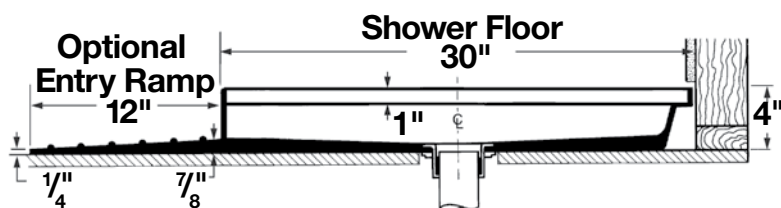
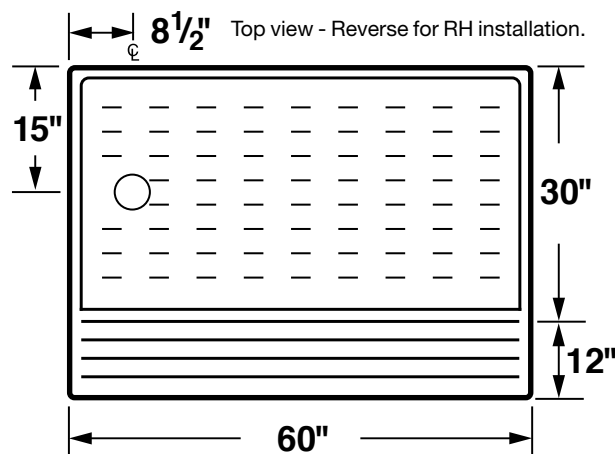
- Americans with Disabilities Act (ADA)
- Code of Federal Regulations: July 1, 1997 (ADA)
- American Society of Testing & Materials (ASTM)-D635 Flammability, E84 Flame Spread, E165.75 Fire Retardancy

Specifications

Model	Description	Drain Location	Fits Alcove	UPC
Barrier-Free Shower Floor				
360R	White	RH	30" x 60"	6 71031 00271 6
360RBN	Bone	RH	30" x 60"	6 71031 00272 3
360L	White	LH	30" x 60"	6 71031 00273 0
360LBN	Bone	LH	30" x 60"	6 71031 00274 7
Entry Ramp (Order separately) 12" deep x 60" wide				
360.100	White	—	—	6 71031 00275 4
360.100BN	Bone	—	—	6 71031 00276 1

General: Furnish and install as shown on plans, barrier-free DURABASE® Shower Floor Model 360 and Entry Ramp model _____ (360.100, 360.100BN) as manufactured by E.L. Mustee & Sons, Inc. Shower floor to be one-piece, molded fiberglass, using matched metal molds under extreme heat and pressure. Surface to be slip-resistant design that does not interfere with flow of water. Size: 30" x 60". Shoulder will be not less than 3-1/16" high or less than 1-1/4" wide. Tiling flange will extend not less than 1" higher than shoulder. Shower floors shall not have curb used in conjunction with 12" x 60" entry ramp per ADA requirements. Drain available on right or left side, offset 8-1/2" x 15". Shall meet ANSI Z 124-2011.2 1990. Color ____ (White, Bone). Install in compliance with local codes.

General: Furnish and install as shown on plans Shower Floor Entry Ramp model: _____, as manufactured by E.L. Mustee & Sons, Inc. Ramp to be one piece, molded fiberglass made with matched metal molds. Slip resistant surface. Trimmable to accommodate for a nearby toilet or other structure. Size 12" x 60". Color: ____ (White, Bone)



MUSTEE

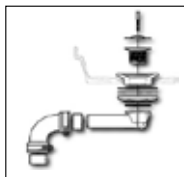
E.L. Mustee & Sons, Inc. • 5431 West 164th Street • Brook Park, OH 44142 • Phone: 216.267.3100 • Fax: 216.267.9997
E-mail: info@mustee.com • Web: www.mustee.com • Proudly made in the USA

Notice: Our continuous commitment to product improvement may result in changes to product specifications without notice. Patents pending. Made and Printed in U.S.A.



▶ Drain Assemblies

60.300A, 60.300ABN Drain Assembly



Model	Color	UPC
60.300A	White	6 71031 00392 8
60.300ABN	Bone	6 71031 00393 5

Use to replace bathtub waste line and connect to existing DWV sanitary pipe.

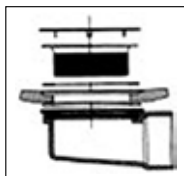
82.400A Drain Assembly



Model	Color	UPC
82.400A		6 71031 00220 4

PVC drain assembly for 1-1/2" PVC pipe solvent welded DWV sanitary pipe.

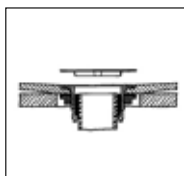
42.400A Drain Assembly



Model	Color	UPC
42.400A		

PVC drain assembly for 2" PVC pipe solvent welded DWV sanitary pipe.

42.317A, 42.320, 42.321 Drain Assembly



Model	Color	UPC
42.317A	Drain assembly	6 71031 00167 2
42.320 Optional	Drain for 2" copper (DWV)	6 71031 00309 6
42.321 Optional	Drain seal for 2" soil pipe (SW)	

Use to replace bathtub waste line and connect to existing DWV sanitary pipe.

