

## USBTFER12 User's Manual

Congratulations on your purchase of the USBTFER12 adapter. This unique cable allows you to easily connect two computers with USB port and instantly transfer files at great speed and ease.



### Package Checklist

This USBTFER12 product package includes the following items:

- USBTFER12
- Driver and Software Installation Disc
- This User's Manual

### Overview

The USBTFER12 is your fast solution to peer-to-peer file transfer between two computers via the USB port. The USBTFER12 provides true plug-n-play capability while transferring files at much greater speed than traditional file transfer products via serial or parallel port, more than 6M bits/sec can be achieved. In most applications, the user will get greater than 4M bits/sec of smooth file transfer rate. The application program, a Windows Program Manager-like user interface, provides a very easy to use environment that makes file transfer as easy as drag-and-drop. All you need is just simply plug in the USBTFER12 by doing a one-time installation of the program.


### Features

The USBTFER12 provides the following features:

- Single chip (ASIC) USB host to host communication
- High-speed data transfer rate up to 6Mbps
- Single cable solution for data communication
- Windows 98 and Windows 2000 Support
- Easy drag-and-drop file transfer
- Includes print function for remote files
- Includes power management and remote wake-up functions
- Compliant with USB specification 1.1

### System Requirements

Before you use the USBTFER12, make sure your computer is an IBM PC-compatible with the following minimum system requirements:

- Intel-compatible 486DX-66 MHz CPU or higher
- One standard USB port (4-pin) and has the symbol 
- Either the following operating systems:
  - Windows 98
  - Windows 2000

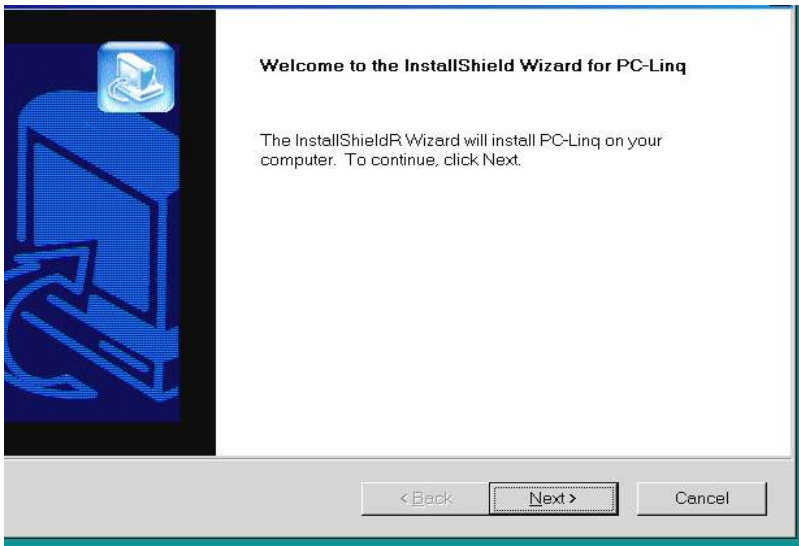
### Driver & USB Data Link Program Installation

*USBTFER12 User's Manual*

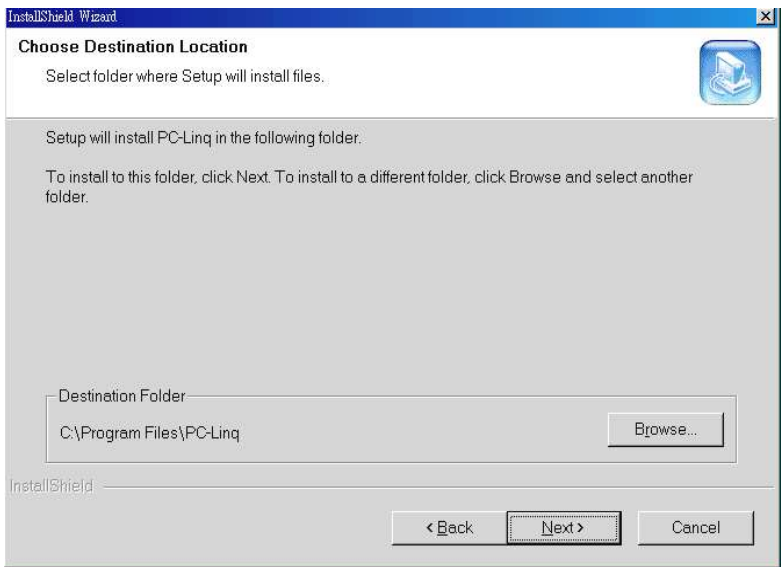
---

Follow the steps below on installing the USBTFER12 and program for the first time:  
**(IMPORTANT: Before you complete finishing the following steps of Driver and Program installation. Do NOT plug in the "Data Link" into the USB port of your PC.)**

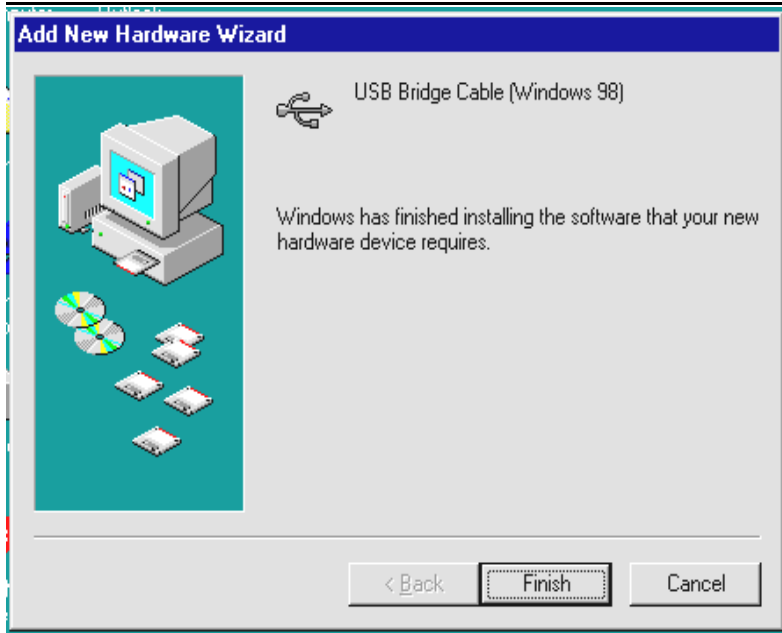
Setup1: On the included CD, double click on the Setup program for your operating system in the "USB DataLink Cable V1.1" folder.



Setup2: choose **Next**

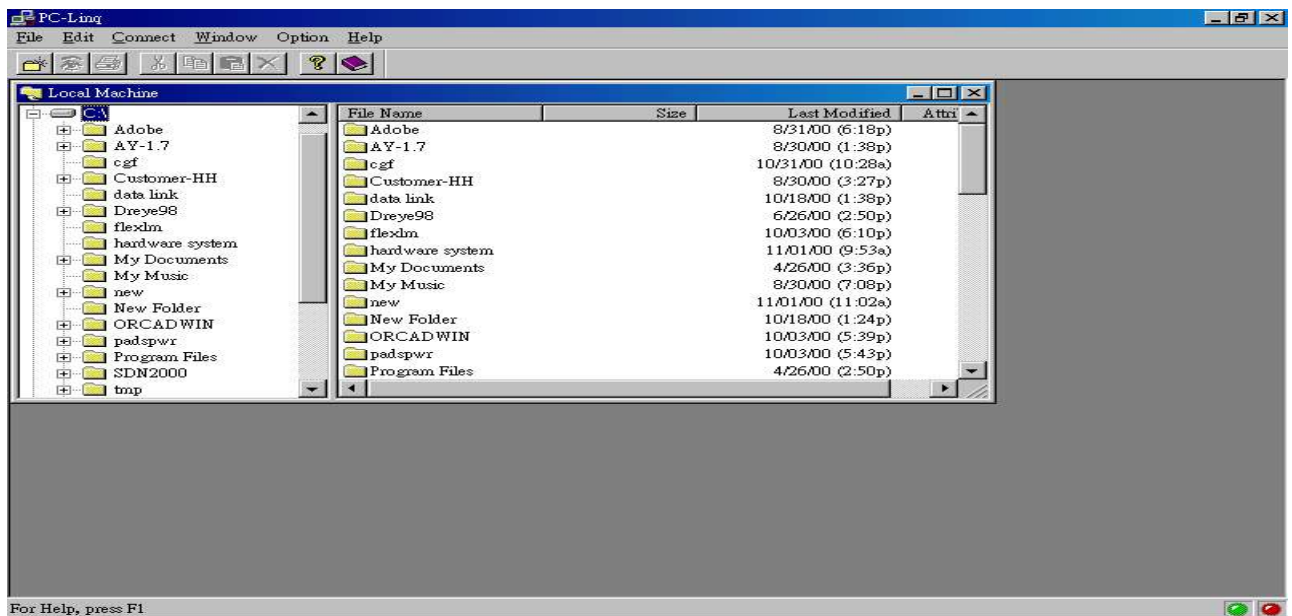


Setup3: choose **Finish**



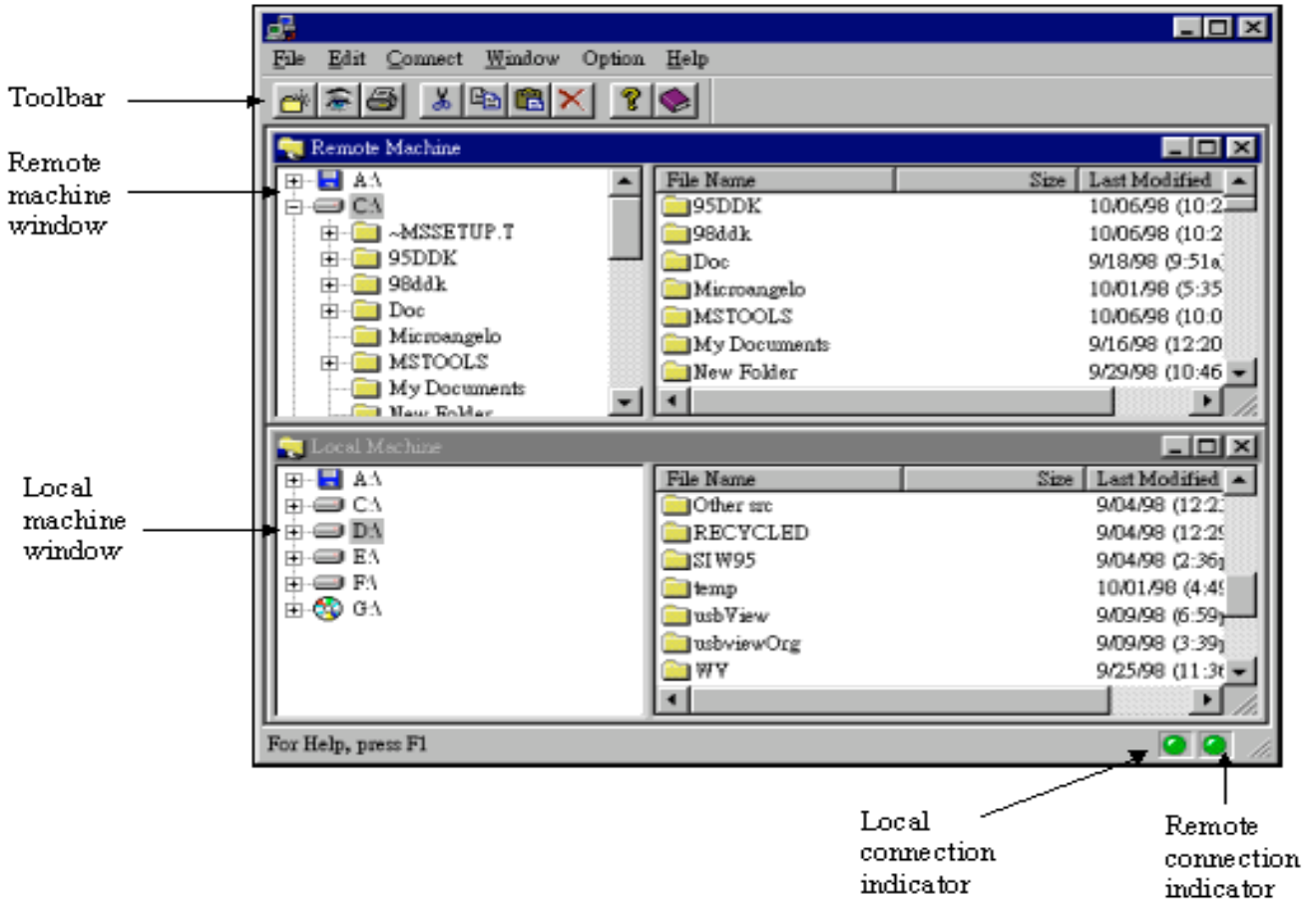
Setup3: insert "Data Link in to USB port.

Setup4: Operation Window will be show on the screen, (The red light in the right bottom will turn in to green.)



Local connection

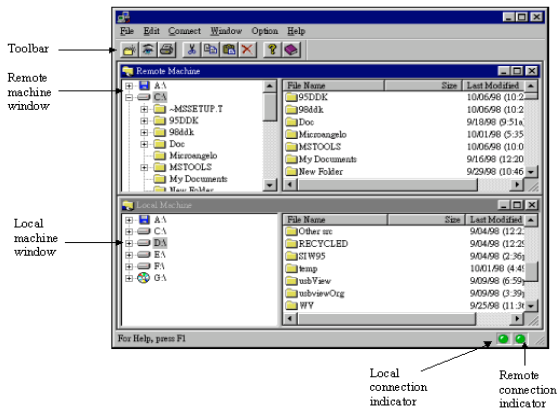
Setup5: Repeat Step 1 to 5 for another computer. (Two red lights will turn in to green after completion of install, and users are able to transfer the data.)



### Running the USB Data Link Program

Follow the steps below on how to run the USB Data Link program:

1. Plug in both ends of the USBXFER12 to the two computers.
2. Double-click on the shortcut icon (showed "PC-Linq") on your desktop screen. Do the same for the other computer.
3. The USB Data Link File Manager will appear on your screen and will detect both the local and remote machine. This is much similar with Windows Explorer file manager where you can cut, copy, paste, or drag files and folders.



4. You can also print text or document files from the remote machine to your local printer by clicking on the file and run File-Print command.
5. There are two LED-like indicators found on the bottom-right corner of the USBData Link File Manager. These indicators show the connection status of the remote and local machine. The left LED is for the local machine, while the right LED is for the remote machine. A green LED indicates that the connection is good while a red LED indicates that connection is not found. Both LEDs need to be in green color for a proper link and operation. If one LED is red, it means the USB cable is not properly connected, or the software is not properly installed, or the PC is in suspend mode.
6. Click on the Help Topics icon (rightmost icon) for more information on how to use the program.

### Power management and Remote Wake-up Function

The USBTFER12 supports power management function of USB. When either of the two connected PC gets into suspend, the USBTFER12 will draw less than 500  $\mu$ A of current from it. This is essential for the notebook or other mobile PC.

The USB Data Link program also includes the remote wakeup function. Whenever the remote machine goes into suspend mode, you just click on any file or folder inside the remote machine folder and the remote machine will resume to normal operation mode.

However, you can disable this function to avoid the annoyance of suspend-wakeup sequence during operating the Data Link application. Please click the menu bar's **Option**, then click **Setting**, and disable the **Allow System to Suspend** option.

### Program Uninstallation

You can uninstall the USB Data Link application program and driver by running Add/Remove Programs in Settings/Control Panel and follow the on-screen instructions to complete the process.

### Disclaimer

Information in this document is subject to change without notice. The manufacturer does not make any representations or warranties (implied or otherwise) regarding the accuracy and completeness of this document and shall in no event be liable for any loss of profit or any other commercial damage, including but not limited to special, incidental, consequential, or other damages.

No part of this document may be reproduced or transmitted in any form by any means, electronic or mechanical, including photocopying, recording or information recording and retrieval systems without the express written permission of the manufacturer.

All brand names and product names used in this document are trademarks, or registered trademarks of their respective holders.

### **FCC Statement**

This device generates and uses radio frequency and may cause interference to radio and television reception if not installed and used properly. This has been tested and found to comply with the limits of a Class B computing device in accordance with the specifications in Part 15 of FCC Rules. These specifications are designed to provide reasonable protection against such interference in a residential installation. However, there is no guarantee that interference will not occur in a particular installation. If this device does cause harmful interference to radio or television reception, which can be determined by plugging the device in and out, the user can try to correct the interference by one or more of the following measures:

- Reorient or relocate the receiving antenna.
- Increase the separation between the device and receiver.
- Connect the computer into an outlet on a circuit different from that to which the receiver is connected.
- Consult the dealer or an experienced radio/TV technician for help.