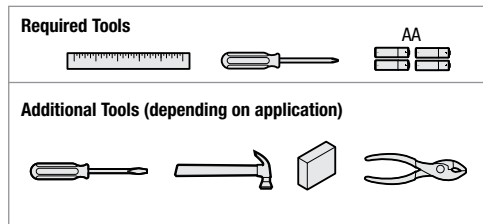


**Installation Guide**



Use and programming instructions are located on the reverse side of this document.

**Parts in the Box**

<b>Latch and Strike</b> A, B	<b>Exterior Assembly</b> C, D, E	<b>Interior Assembly</b> F, G, H
<b>If needed, please contact Kwikset to order a drive-in latch for your lock.</b> A2	<b>Fasteners</b> J, K, L	

Kwikset  
1-800-327-5625  
www.kwikset.com

**1 Check dimensions**

Additional door preparation may be required for doors with 1-1/2" (38 mm) holes. Consult the drilling instructions at [www.kwikset.com/doorprep](http://www.kwikset.com/doorprep).

**2 Adjust the backset of latch (if needed)**

**A** Hold the latch in front of the door hole, with the latch face flush against the door edge.

**B** If the latch holes are centered in the door hole, no adjustment is required. Proceed to step 3. If the latch holes are NOT centered, adjust latch. See "Latch Adjustment."

**Latch Adjustment (only if needed)**

**3 Install latch**

**For doors with chiseled edge**

**For doors without chiseled edge**

**A** Insert drive-in latch A2.

**B** Use wood block to secure latch.

**4 Prepare exterior keypad (if needed)**

**For doors with 2-1/8" (54 mm) holes**

**For doors with 1-1/2" (38 mm) holes**

Proceed to step 5.

**A** Temporarily remove gasket. **B** Remove adapter ring. **C** Reinstall gasket, ensuring a tight seal.

**5 Prepare mounting plate (if needed)**

**For doors with 2-1/8" (54 mm) holes**

**For doors with 1-1/2" (38 mm) holes**

Proceed to step 6.

Use pliers to remove the two tabs from the mounting plate (F).

**6 Install keypad and mounting plate**

**A** Locate screws (L) and keep them within reach.

**B** Cable goes underneath latch.

**C** Mount keypad and mounting plate.

**D** Keep parallel to edge of door. Tighten screws evenly. L (2x).

**E** Insert key and test latch. If latch does not extend or retract smoothly, adjust screws (L). Remove key when finished and make sure the latch bolt is in the unlocked position.

**7 Load batteries and reset the lock**

**A** Insert batteries H into interior assembly G.

**B** Note: The turnpiece may rotate on its own.

**C** Press and hold the Reset button on the interior assembly for five seconds, until you hear three beeps.

Ensure correct polarity. For best results, use new, non-rechargeable Alkaline batteries only.

**8 Install interior assembly**

**A** Align colored edges of connectors and ensure secure cable connection.

**B** Rotate turnpiece AWAY from the door edge. 45°.

**C** Check for smooth turnpiece rotation. If turnpiece does not rotate, pull interior assembly (G) off the door. Repeat steps 7B and 7C, making sure the turnpiece is rotated away from the door edge.

**D** Check for smooth turnpiece rotation.

**E** K (3x)

**F** Make sure door is unlocked.

**9 IMPORTANT: Enter door handing code and test lock**

**A** While the door is OPEN AND UNLOCKED, enter the following code to teach the lock the orientation of the door.

Default MASTERCODE: 0-0-0-0	Lock button	"0"	Lock button
-----------------------------	-------------	-----	-------------

If programming is successful, the keypad will flash green twice with two beeps. If unsuccessful, the keypad will flash red three times with three beeps. Attempt to enter the code again.

**B** Press the Lock button once.

**C** If the latch bolt extends to lock, the lock has correctly learned the orientation of the door.

**D** Unlock door.

**10 Install strike**

**11 Re-key the lock**

If needed, re-key the lock to work with your existing key. See the supplied SmartKey Re-key instructions for more information.

**12 Program the lock**

Programming instructions are located on the reverse side of this document.

**Template**

If your door requires drilling, cut out the template and place it on the exterior side of the door. Complete door drilling instructions are available at [www.kwikset.com/doorprep](http://www.kwikset.com/doorprep).

**Kwikset**

ENGLISH

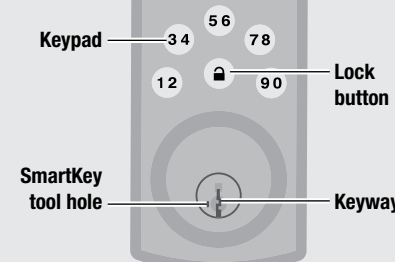
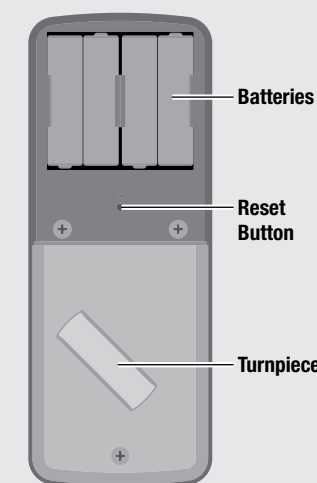
**Powerbolt 2**  
TOUCHPAD KEYLESS ENTRY**User Guide****Kwikset**  
1-800-327-5625  
www.kwikset.com

Installation instructions are located on the reverse side of this document.

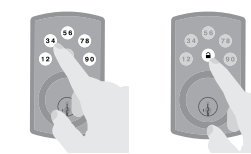
**A Pre-Set Codes****CAUTION:** This lock contains a pre-set mastercode (0-0-0-0) and user code (1-2-3-4). Immediately change these to codes of your own.

To change the mastercode, follow the steps in "Changing the Mastercode" (Section D-b below).

To change the user code, first delete it by following the steps in "Deleting a Single User Code". Then, add a new code by following the steps in "Adding User Codes".

**IMPORTANT:** Please make sure that the door handing code was entered during installation. See step 9 on the reverse side of this document.**B PowerBolt at a Glance****Exterior****Interior (cover removed)****C Normal Operation****Unlocking the Door**

- 1 Enter user code.
- 2 Press Lock button once.

**Locking the Door**

Press Lock button once.



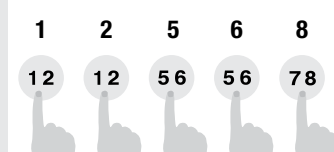
Note: If no user codes are programmed, or if they are disabled, the Lock button will be disabled.

**Incorrect Codes**

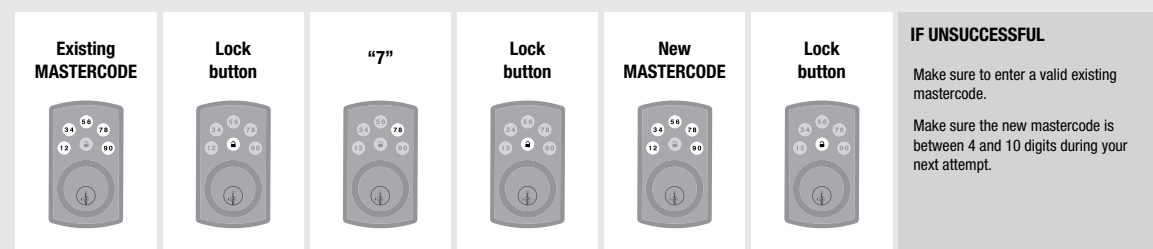
Codes Entered	Lock Behavior	Next Step
One incorrect code entered.	Keypad flashes red three times with three beeps.	Re-enter code.
Five incorrect codes entered within one minute.	Keypad flashes red five times with five beeps.	Re-enter code after 45 second keypad lockout.

**D Programming Codes****a Programming Information****How the Keypad Works**

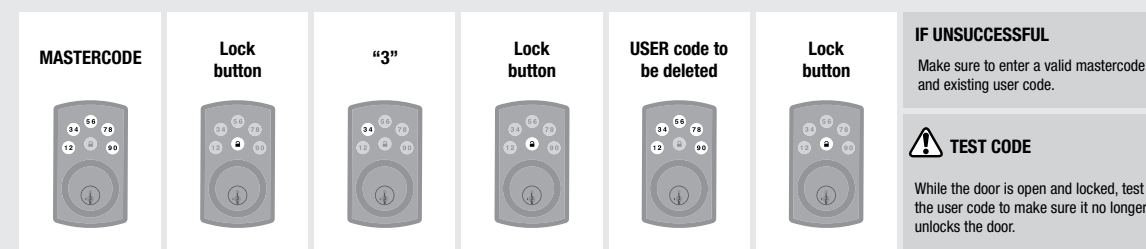
Each button represents two numbers (i.e. 1 and 2 for the first button). You only need to push the button once to get either 1 or 2. For example: If your code is 1-2-5-6-8,

**b Changing the Mastercode**The mastercode is required to put the lock in programming mode, but it is not used to unlock the door. The lock is programmed with the **default mastercode 0-0-0-0**. **Replace this with a code of your own.** The mastercode must be 4-10 digits.

- Keep door open and unlocked during programming.

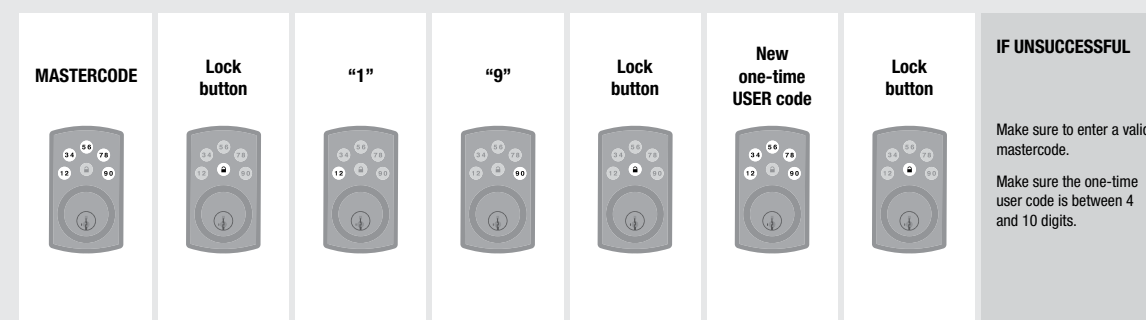
**e Deleting a Single User Code**The lock is programmed with the **default user code 1-2-3-4**. **Delete this code. Add new codes of your own** in section d.

- Keep door open and unlocked during programming.

**f Adding a One-Time User Code**

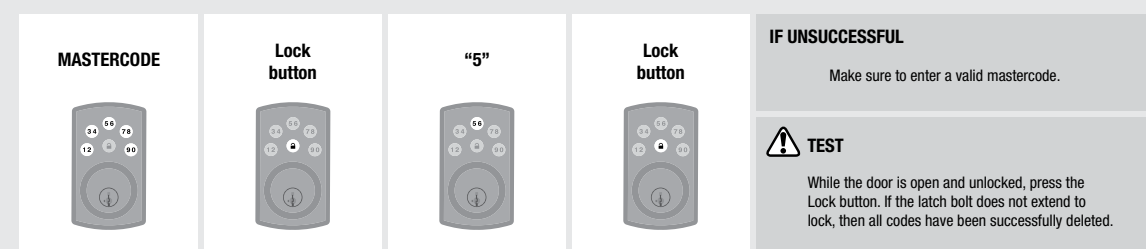
A one-time user code may be used only once and will be deleted from the lock immediately after use. The one-time user code should not be the same as an existing user code.

- Keep door open and unlocked during programming.

**g Deleting All User Codes**

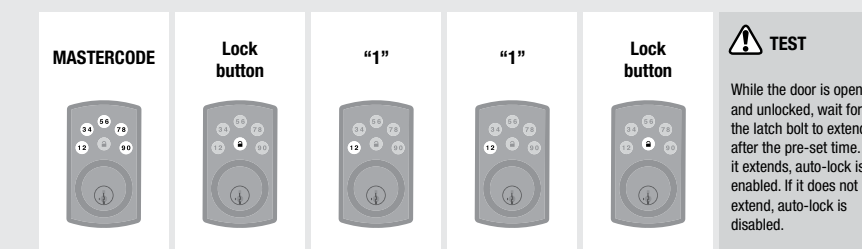
The lock button and auto-lock function will be disabled until a new code is added, and the lock can only be operated by the key and turnpiece.

- Keep door open and unlocked during programming.

**E Auto-Lock and Mute Settings****a Enabling/Disabling Auto-Lock**

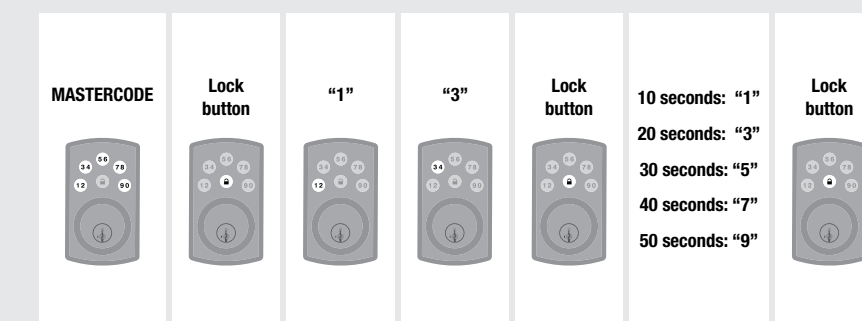
This feature is not enabled by default. When enabled, the door will automatically lock after 30 seconds. This time can be adjusted in section b. After auto-lock is enabled, repeat this procedure to disable it as needed.

- Keep door open and unlocked during programming.

**b Setting Auto-Lock Time Delay**

Perform this procedure to change the pre-set 30 second time delay of the auto-lock feature.

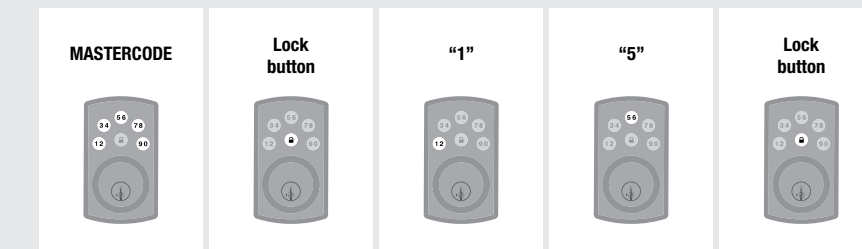
- Keep door open and unlocked during programming.

**c Mute**

Perform this procedure to mute the beeping sound heard during programming and normal operation. Repeat the procedure to unmute the beeping sound.

**CAUTION:** Low battery indicators and system alerts will not be heard while the system is muted.

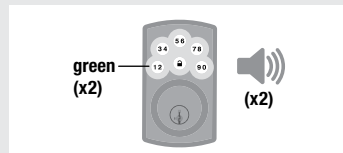
- Keep door open and unlocked during programming.

**Programming Behavior****Programming Mode Timeout**

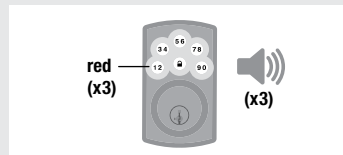
The keypad will flash amber slowly while the lock is in programming mode. If no button is pressed for 10 seconds, the system will time out and you will need to restart the procedure.

**Successful Programming**

The keypad will flash green twice, and you will hear two beeps\*.

**Unsuccessful Programming**

The keypad will flash red three times, and you will hear three beeps\*.

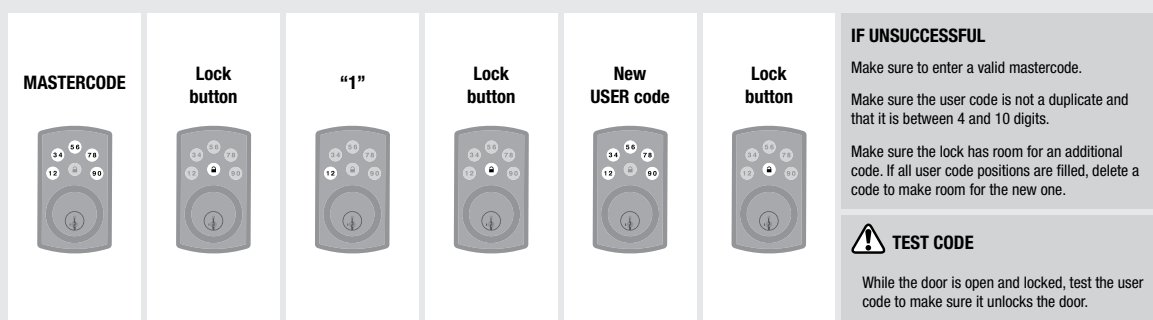


\*Beeping sound will not be heard when the lock is muted.

**c Adding User Codes**

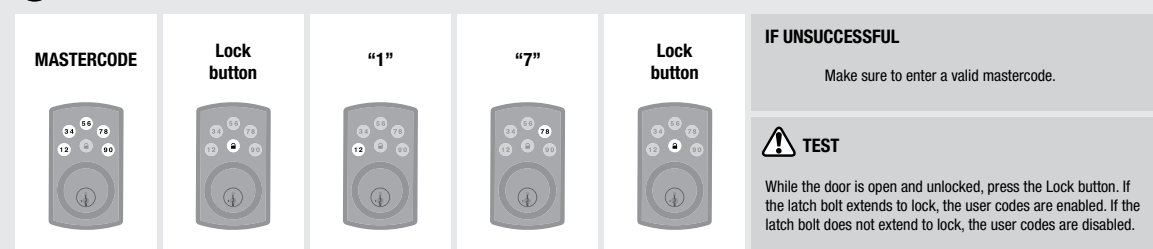
Each user code must be a unique code between 4 and 10 digits. A total of 6 user codes may be programmed. Note: It is not recommended to program a user code that is the same as the mastercode.

- Keep door open and unlocked during programming.

**d Disabling/Enabling User Codes**

Perform this procedure once to disable all user codes, and repeat the procedure to re-enable user codes. The lock button and auto-lock function will be disabled until user codes are re-enabled, and the lock can only be operated by the key and turnpiece.

- Keep door open and unlocked during programming.

**F Regulatory Compliance**

This product complies with standards established by the following regulatory bodies:

- Federal Communications Commission (FCC)
- Industry Canada

**FCC**

This device complies with Part 15 of the FCC Rules. Operation is subject to the following two conditions:

- (1) this device may not cause harmful interference, and
- (2) this device must accept any interference received, including interference that may cause undesired operation.

This equipment has been tested and found to comply with the limits for a Class B digital device, pursuant to Part 15 of the FCC Rules. These limits are designed to provide reasonable protection against harmful interference in a residential installation.

This equipment generates, uses, and can radiate radio frequency energy and, if not installed and used in accordance with the instructions, may cause harmful interference to radio communications. However, there is no guarantee that interference will not occur in a particular installation. If this equipment

does cause harmful interference to radio or television reception, which can be determined by turning the equipment off and on, the user is encouraged to try to correct the interference by one or more of the following measures:

- Reorient or relocate the receiving antenna.
- Increase the separation between the equipment and receiver.
- Connect the equipment into an outlet on a circuit different from that to which the receiver is connected.
- Consult the dealer or an experienced radio/TV technician for help.

**IMPORTANT!** Changes or modifications not expressly approved by the manufacturer could void the user's authority to operate the equipment.**Industry Canada**

This device complies with Industry Canada licence-exempt RSS standard(s). Operation is subject to the following two conditions: (1) this device may not cause interference, and (2) this device must accept any interference, including interference that may cause undesired operation of the device.

**G System Alerts**

Alert	Reason	Solution
Keypad flashes red 10 times with 10 beeps.	Low battery.	Replace batteries.
Keypad flashes red three times with three beeps.	Door jammed while attempting to lock.	Manually re-lock door. If needed, reposition strike.
	No user code programmed or user codes are disabled.	Program at least one user code, or re-enable user codes.
	Unsuccessful programming.	Attempt programming procedure again.
Keypad flashes red five times with five beeps.	Incorrect user code entered.	Re-enter user code.
	Five incorrect user codes entered within one minute.	Re-enter user code after 45-second keypad lockout.

**H Troubleshooting****a. The lock cannot be locked or unlocked by the keypad.**

Make sure the lock is programmed with at least one code and that the user codes are not disabled. If needed, perform a factory reset and enter the door handing code (see "Factory Reset").

**b. The keypad doesn't respond when touched (no lights are visible and no beeping is heard).**

Make sure the cables are properly connected, and make sure the batteries are new and installed correctly.

**c. After the lock has been working normally, the latch bolt locks up and the turnpiece will not rotate.**

Re-enter the door handing code, using your mastercode. See "Factory Reset," steps 2 and 3.

**d. The door can be locked with the Lock button, but the user code will not unlock the door.**

Make sure the user code is correct and that the Lock button is pushed after entering the user code. If the door still won't unlock, use a key to unlock the door. Call technical support for further troubleshooting.

**e. When the door is closed and the Lock button is pressed to lock the door, the lock emits a system alert. When the door is open and the Lock button is pressed to lock the door, there is no system alert.**

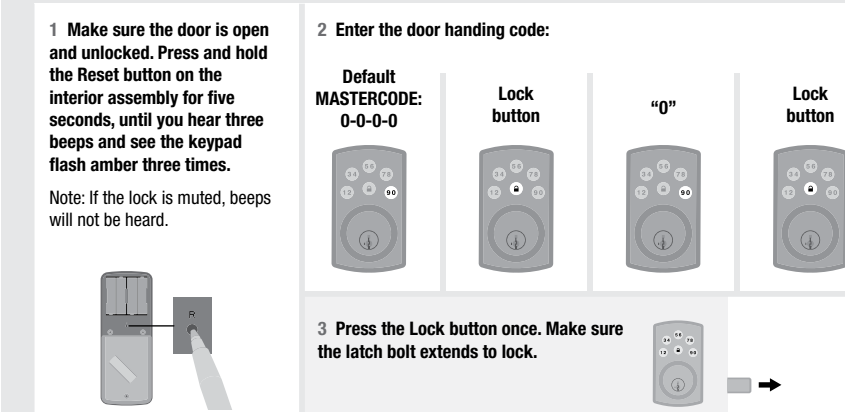
Make sure that the hole in the door frame behind the strike is drilled at least 1" (25 mm) deep. Also make sure the strike plate is aligned with the latch bolt. If needed, reposition the strike.

**I Factory Reset**

A factory reset will delete all codes associated with the lock, and the default mastercode (0-0-0-0) and user code (1-2-3-4) will be restored.

**CAUTION:** Replace the pre-set codes with codes of your own.

Note: Auto-lock will be disabled after a factory reset.

**J Important Safeguards**

1. Read all instructions in their entirety.
2. Familiarize yourself with all warning and caution statements.
3. Remind all family members of safety precautions.
4. Restrict access to your lock's interior assembly and routinely check your settings to ensure they have not been altered without your knowledge.
5. Protect your user codes and mastercode.
6. Dispose of used batteries according to local laws and regulations.

**CAUTION:** Prevent unauthorized entry. This lock has a pre-set user code and mastercode. Upon installation and set-up, replace both of these codes with your own. Since anyone with access to the interior assembly can reset the lock and change the user codes, you must restrict access to the interior assembly and routinely check the user codes to ensure they have not been altered without your knowledge.**WARNING:** This Manufacturer advises that no lock can provide complete security by itself. This lock may be defeated by forcible or technical means, or evaded by entry elsewhere on the property. No lock can substitute for caution, awareness of your environment, and common sense. Builder's hardware is available in multiple performance grades to suit the application. In order to enhance security and reduce risk, you should consult a qualified locksmith or other security professional.