

# Installation Instructions

## LKFRB1 Freeze Resistant Package

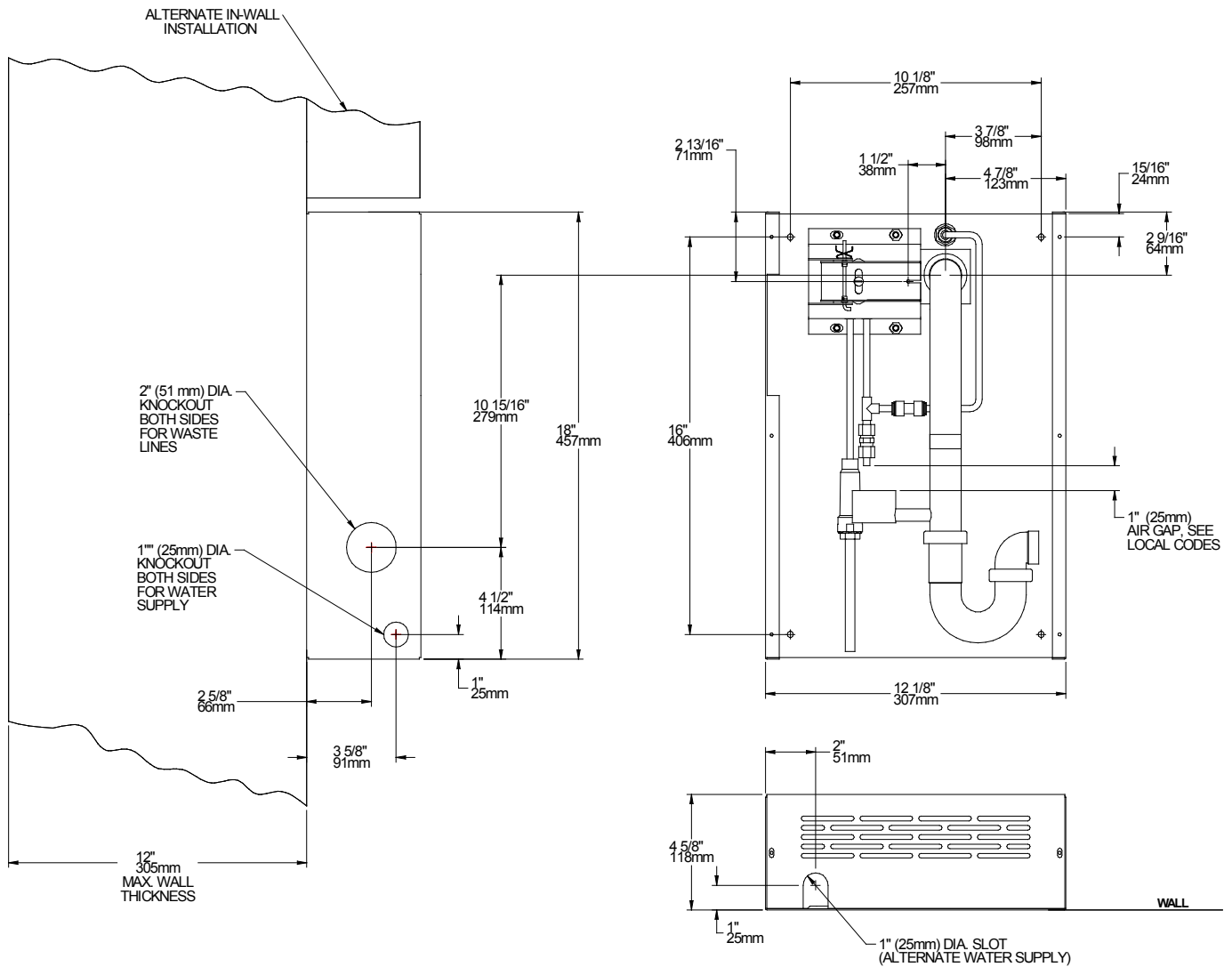


FIG. 1

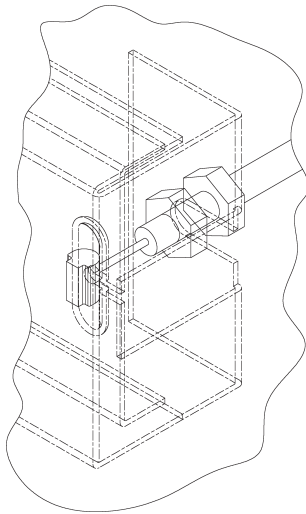
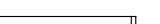
**WARNING:** This Freeze Resistant Package must be installed on an interior heated wall. The front of the box must have unobstructed air flow. Failure to maintain the interior wall temperature and the inside of the Freeze Resistant Package above 50° F (10° C) can and will cause damage to the Freeze Resistant Package. This damage can result in bursting and rupturing of interior plumbing which will result in uncontrollable water flow and flooding of the area. Rough-In dimensions will vary depending upon the type of fountain that this package is installed with. Dimensions shown are for reference only.

**CABLE SHEATH ADJUSTMENT**

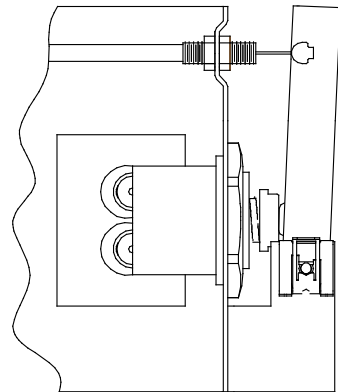
To Increase Free Play



To Reduce Free Play

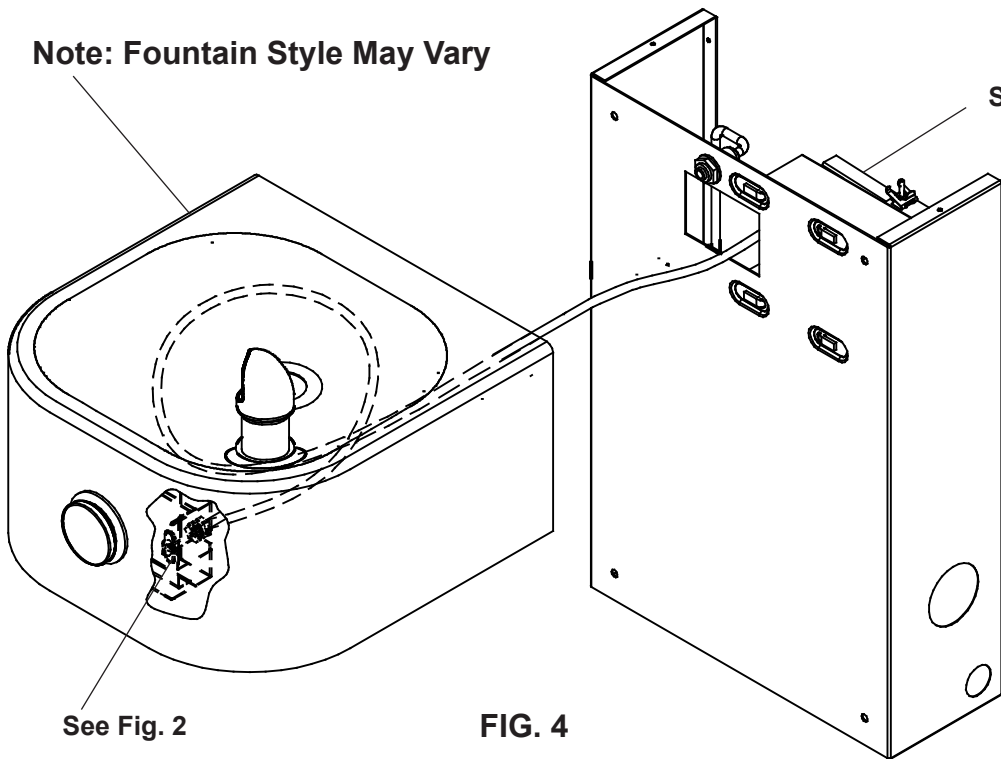


**FIG. 2**



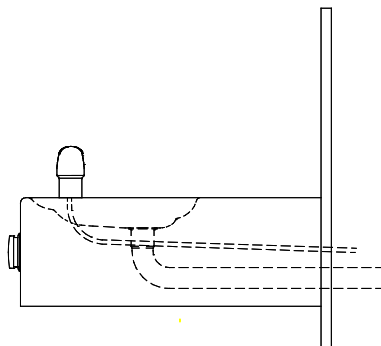
**FIG. 3**

Note: Fountain Style May Vary

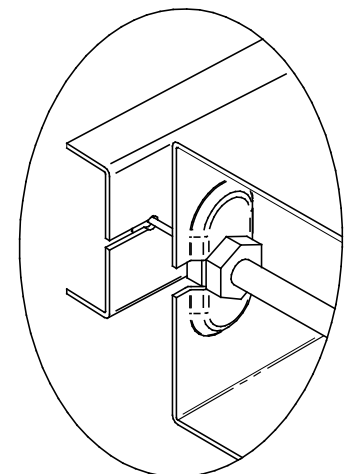


See Fig. 2

**FIG. 4**



**FIG. 5**



**FIG. 6**

## INSTALLATION INSTRUCTIONS

The freeze resistant package must be mounted on an interior wall in a heated area. The room temperature of the interior heated area must be 50° F (10° C) or higher. The freeze resistant package may be surface or recessed mounted. If recess mounted the surface of the cover must be flush with the interior wall surface. The package is furnished with screws for mounting the cover to the box. If the box is recess mounted, do not fasten the top and bottom of the cover to the box. Use the holes on the front only.

1. Assemble the operating cable to the fountain bracket. (Fountain should be mounted to exterior wall). The adjustment nuts should be adjusted as per the fountain's instructions. Create a loop in the cable and thread the free end of the cable through the wall into the freeze resistant box.
2. Connect free end of operating cable to the valve-operating bracket in the freeze resistant box.
3. Remove cable free play by adjusting the jam nuts on the ends of the operating cable. See Figure 3.
4. Connect water line from fountain bubbler into freeze resistant box. The connection to the box uses a quick connect water fitting. Position the water line, in the fountain, to drain back into interior mounted box. Any water left standing, in the exterior line, can freeze. See Figure 5.

To insert tubing, push tube straight into fitting until it reaches a positive stop. To remove tubing from the fittings, relieve water pressure, push in on dark gray collar while pulling out on the tubing. See Figure 8.

5. Connect drain and water supply lines to the freeze resistant fountain. Refer to Figure 1 for component positions. Inline strainer must be used on the inlet water line. See Figure 7.

## Start-up

1. Turn on building water supply and check all connections for leaks. Repair as required.
2. Stream height is factory set at 35 PSI. If stream height needs to be changed adjust screw on regulator, behind regulator pivot bracket. See Figure 11. Clockwise adjustment raises stream height, counter clockwise adjustment will lower stream.
3. Adjust operating cable as required. Cable system should have a minimal amount of free play to allow for proper valve operation. If the system is too tight the valve will stay in the on position creating constant water flow. Too much free play will result in non-operation of the valve with the push-buttons.
4. Note: Water from the drain back tube will continue to run while the valve is actuated. (Reference Item 6).
5. After cable system is adjusted properly stuff flexible insulation into any openings between the outside wall and the interior box.
6. Recheck all connections. If all connections are leak free replace cover(s) on the freeze resistant box(es) and fountain(s).

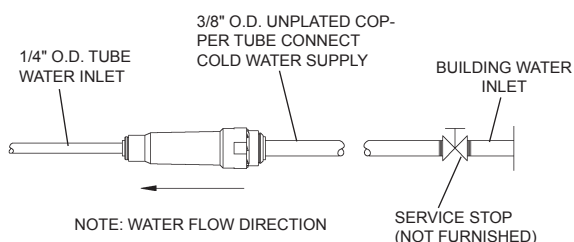


FIG. 7

## OPERATION OF QUICK CONNECT FITTINGS

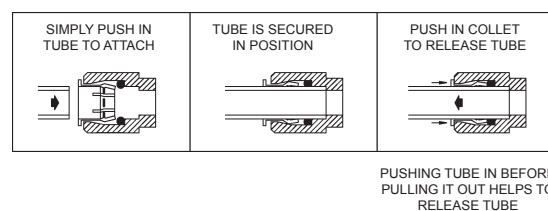
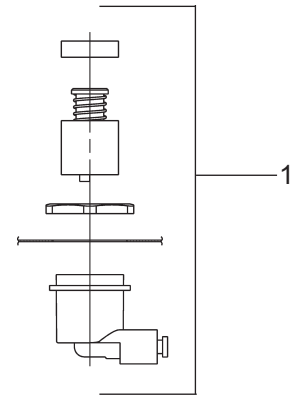


FIG. 8

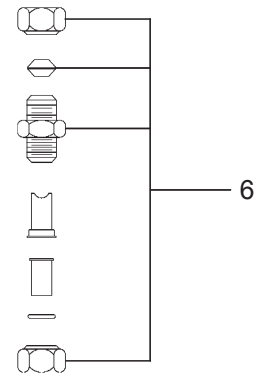
**PARTS LIST**

ITEM NO.	PART NO.	DESCRIPTION
1	98733C	KIT - REGULATOR/HOLDER/NUTS
2	27312C	COVER - BODY
3	98858C	KIT - FREEZE BOX REGULATOR BRKTS/ ROD/BUSHINGS/CLIP
4	98861C	KIT - FREEZE BOX WATER OUTLET ASSY 1/4"UNION FITTING/BULKHEAD FITTING
5	27984C	FREEZE RESISTANT BODY ASSY/SCREW
6	98859C	KIT - FREEZE BOX CHECK VALVE/O'RING
7	98860C	KIT - FREEZE BOX WASTE LINE
8	55996C	STRAINER
NS	75582C	OPERATING CABLE

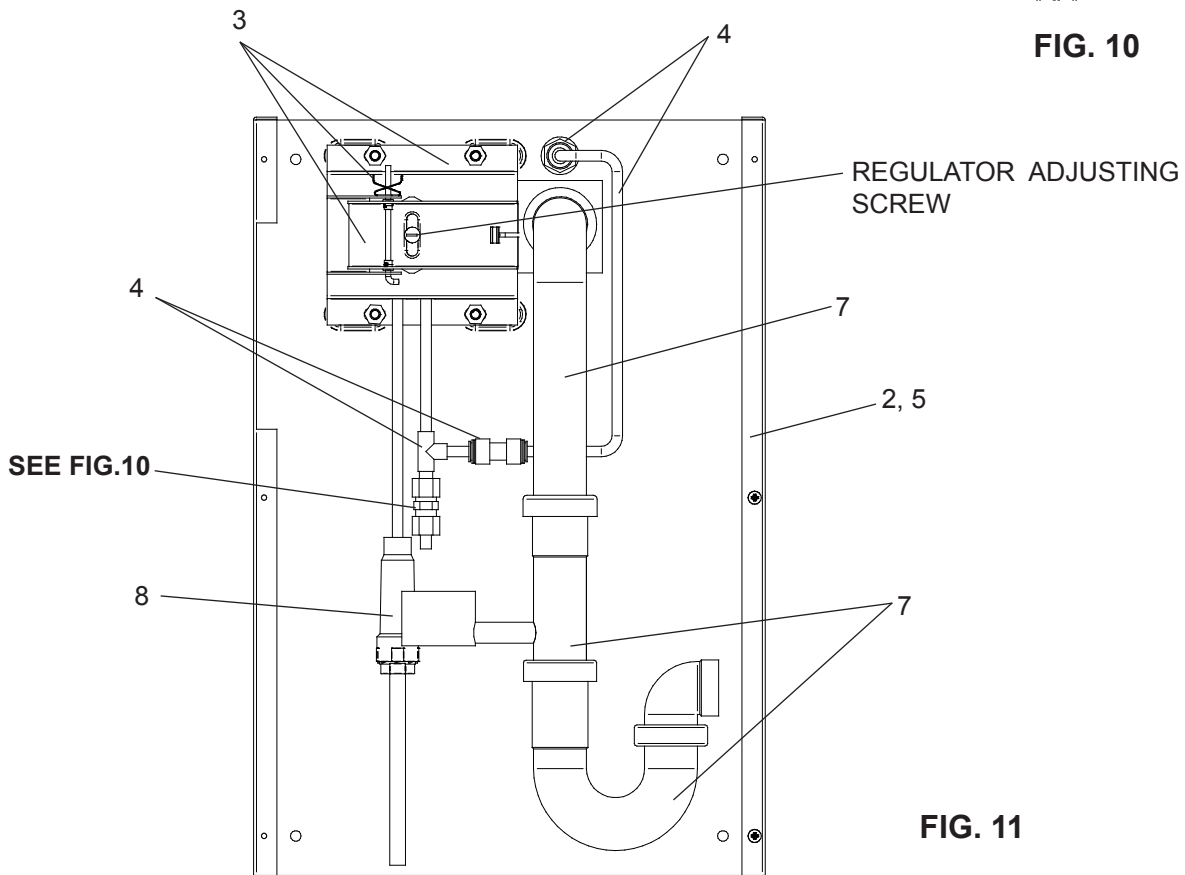
NS - NOT SHOWN



**FIG. 9**



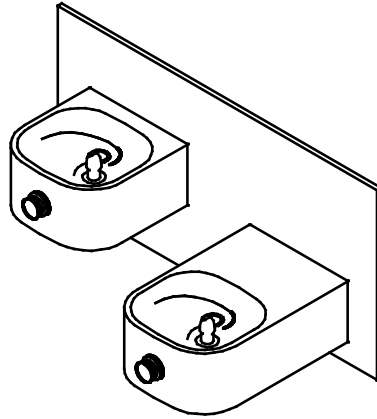
**FIG. 10**



**FIG. 11**

# Installation Manual

## Soft Sides® Freeze Resistant Fountain



**EDFP217FPC**

### INSTALLER

Elkay Fountains are among the easiest to install Fountains on the market today. To assure you install these models easily and correctly, PLEASE READ THESE SIMPLE INSTRUCTIONS BEFORE STARTING THE INSTALLATION. CHECK YOUR INSTALLATION FOR COMPLIANCE WITH PLUMBING, ELECTRICAL, AND OTHER APPLICABLE CODES. After installation, leave these instructions with the Fountain for future reference. This Freeze Resistant Fountain is shipped in two separate cartons. The second carton(s) contains the Freeze Resistant Package(s) **LKFRB1** that are installed on an interior heated wall. The interior space must maintain a minimum temperature of 50° F (10° C). Refer to the Freeze Resistant Package for the rough-in dimensions for installation.

### IMPORTANT

**ALL SERVICE TO BE PERFORMED BY AN AUTHORIZED SERVICE PERSON.**

### IMPORTANT! INSTALLER PLEASE NOTE.

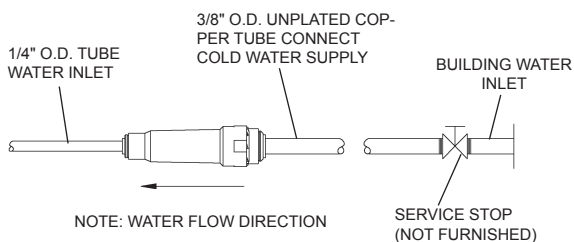
THE GROUNDING OF ELECTRICAL EQUIPMENT SUCH AS TELEPHONE, COMPUTERS, ETC. TO WATER LINES IS A COMMON PROCEDURE. THIS GROUNDING MAY BE IN THE BUILDING OR MAY OCCUR AWAY FROM THE BUILDING. THIS GROUNDING CAN CAUSE ELECTRICAL FEEDBACK INTO A FOUNTAIN, CREATING AN ELECTROLYSIS WHICH CAUSES A METALLIC TASTE OR AN INCREASE IN THE METAL CONTENT OF THE WATER. THIS CONDITION IS AVOIDABLE BY USING THE PROPER MATERIALS AS INDICATED. ANY DRAIN FITTINGS PROVIDED BY THE INSTALLER SHOULD BE MADE OF PLASTIC TO ELECTRICALLY ISOLATE THE FOUNTAIN FROM THE BUILDING PLUMBING SYSTEM.

The freeze resistant package must be mounted on an interior wall in a heated area. The room temperature of the interior heated area must be 50° F (10° C) or higher. The freeze resistant package may be surface or recessed mounted. If recess mounted the surface of the cover must be flush with the interior wall surface. The package is furnished with screws for mounting the cover to the box. If the box is recess mounted, do not fasten the top and bottom of the cover to the box. Use the holes on the front only.

1. Fountains using the MPW Mounting Plate refer to Fig's. 6 or 8 for hanger bracket location and rough-in dimensions.  
NOTE: Review separate installation instructions for details of the MPW Mounting Plate. Fountains using the MP20 Wall Plate Assy. refer to Fig. 4 for rough-in dimensions.
2. Shown dimensions pertain to installation location (framing must support up to 150 lbs. weight for single fountain and 300 lbs. for dual fountains). These dimensions are required for compliance with ANSI Standard A117.0.
3. Installing back panel.  
EDFP217FPC: Refer to Fig. 17 for placement of braces onto back panel. Place the upper edge of the panel above hanger bracket. Slide the panel down until it engages the hanger bracket. Be sure back panel is firmly engaged before releasing it.  
EDFP217FPC w/MP20 Wall Plate Assy: Place the upper edge of the panel above mounting plate on the wall. Slide the panel down until it engages the hanger. Be sure back panel is firmly engaged before releasing it.
4. Remove bottom access panel from fountain basin and save the screws.  
EDFP217FPC: Install the fountain to the back panel and wall using (4) 5/16" x 2.00" long lag bolts and washers (NOT PROVIDED).  
EDFP217FPC w/MPW Mounting Plate: Install the fountain to the back panel and wall using (4) 5/16 " x 6" long threaded rods, washers, and nuts (provided). Tighten securely.  
EDFP217FPC w/MP20 Wall Plate Assy: Install the fountain to the back panel and wall using (4) 5/16" x 3/4" long bolts and washers (provided) thru holes in back panel. A washer is used on the bottom two (2) holes only. Tighten securely.
5. Assemble the operating cable to the fountain bracket. (Fountain should be mounted to exterior wall) The adjustment nuts should be in the middle of threaded area on the operating cable. See Figure 10. Create a loop in the cable and thread the free end of the cable through the wall into the freeze resistant box.
6. Connect free end of operating cable to the valve-operating bracket in the freeze resistant box. Remove cable free play by adjusting the jam nuts on the ends of the operating cable. See Figure 11.
7. Connect water line from fountain bubbler into freeze resistant box. The connection to the box uses a quick connect water fitting. Position the water line, in the fountain, to drain back into interior mounted box. Any water left standing, in the exterior line, can freeze. See Fig. 14.  
  
To insert tubing, push tube straight into fitting until it reaches a positive stop. To remove tubing from the fittings, relieve water pressure, push in on dark gray collar while pulling out on the tubing. See Figure 2.
8. Connect drain and water supply lines to the freeze resistant fountain. Refer to Figure's 3 thru 9 for component positions. Inline strainer must be used on the inlet water line. See Fig. 1.

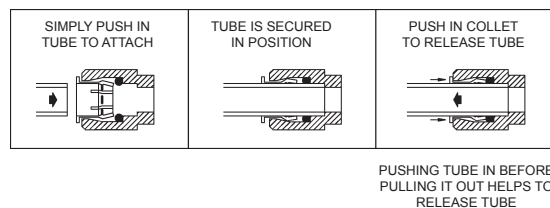
**Start-up**

1. Turn on building water supply and check all connections for leaks. Repair as required.
2. Stream height is factory set at 35 PSI. If stream height needs to be changed adjust the regulator in the freeze resistant package. Clockwise adjustment raises stream height, counter clockwise adjustment will lower stream.
3. Adjust operating cable as required. Cable system should have a minimal amount of free play to allow for proper valve operation. If the system is too tight the valve will stay in the on position creating constant water flow. Too much free play will result in non-operation of the valve with the push-buttons.
4. Note: Water from the drain back tube in the freeze resistant package, will continue to run while the valve is actuated.
5. After cable system is adjusted properly stuff flexible insulation into any openings between the outside wall and the interior box.
6. Recheck all connections. If all connections are leak free replace cover(s) on the freeze resistant box(es) and fountain(s).



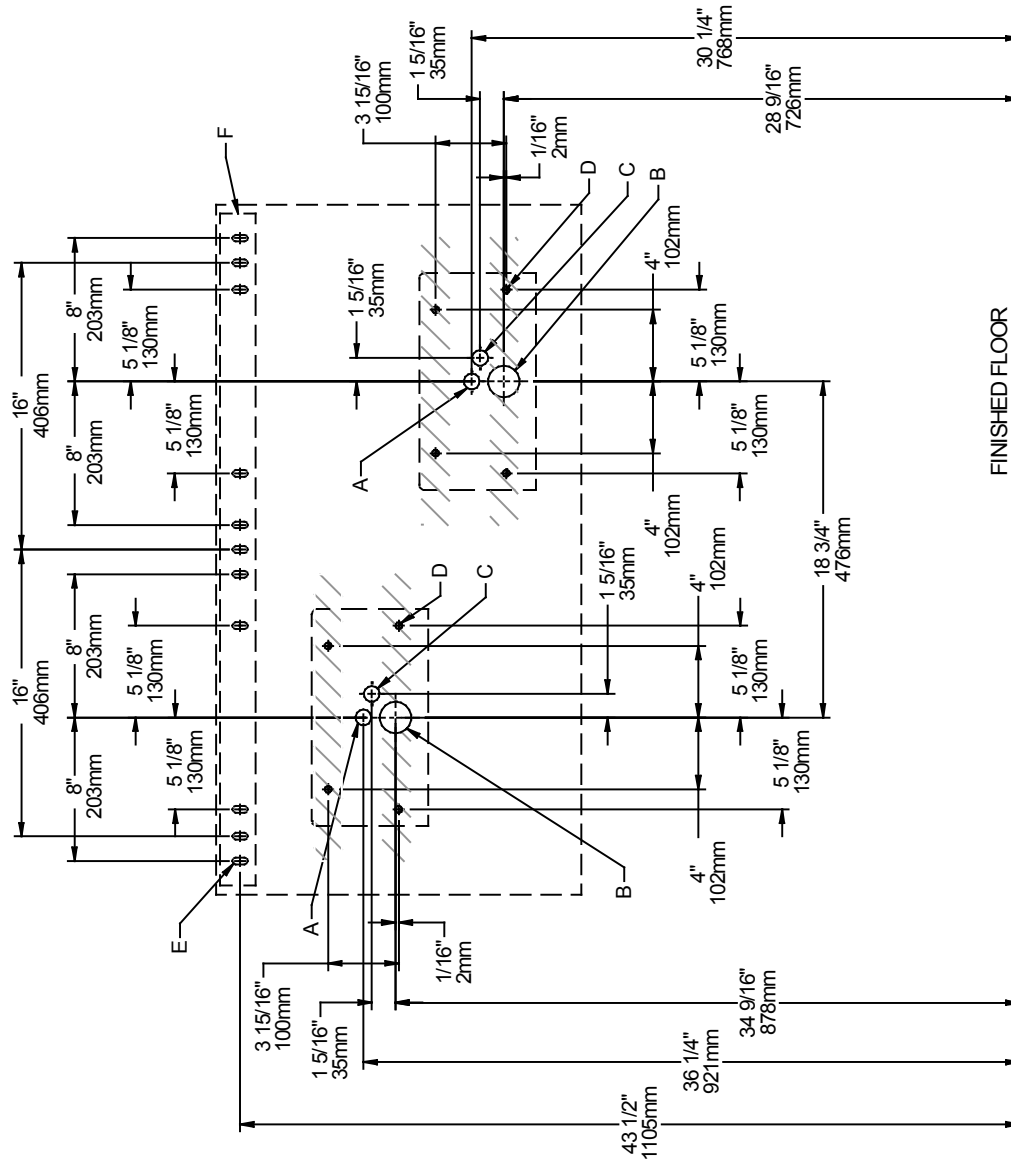
**FIG. 1**

**OPERATION OF QUICK CONNECT FITTINGS**



**FIG. 2**

EDFP217FP ROUGH-IN



LEGEND

- A = 7/8" DIA. (22mm) HOLE FOR WATER SUPPLY TUBE
- B = 1-3/4" DIA. (44mm) HOLE FOR WASTE LINE
- C = 7/8" DIA. (22mm) HOLE FOR OPERATING CABLE
- D = MOUNTING BOLT LOCATIONS (8) (3/8" DIA. NOT PROVIDED)
- E = 3/8" DIA. (10mm) SLOTS FOR MOUNTING HANGER TO WALL
- F = WALL HANGER FURNISHED LOOSE

\*Note: All dimensions are taken from the finished floor on the the side of the wall the fountain is installed on.

FIG. 3

NOTE: REINFORCE WALL IN SHADED AREAS.



EDFP217FP ROUGH-IN

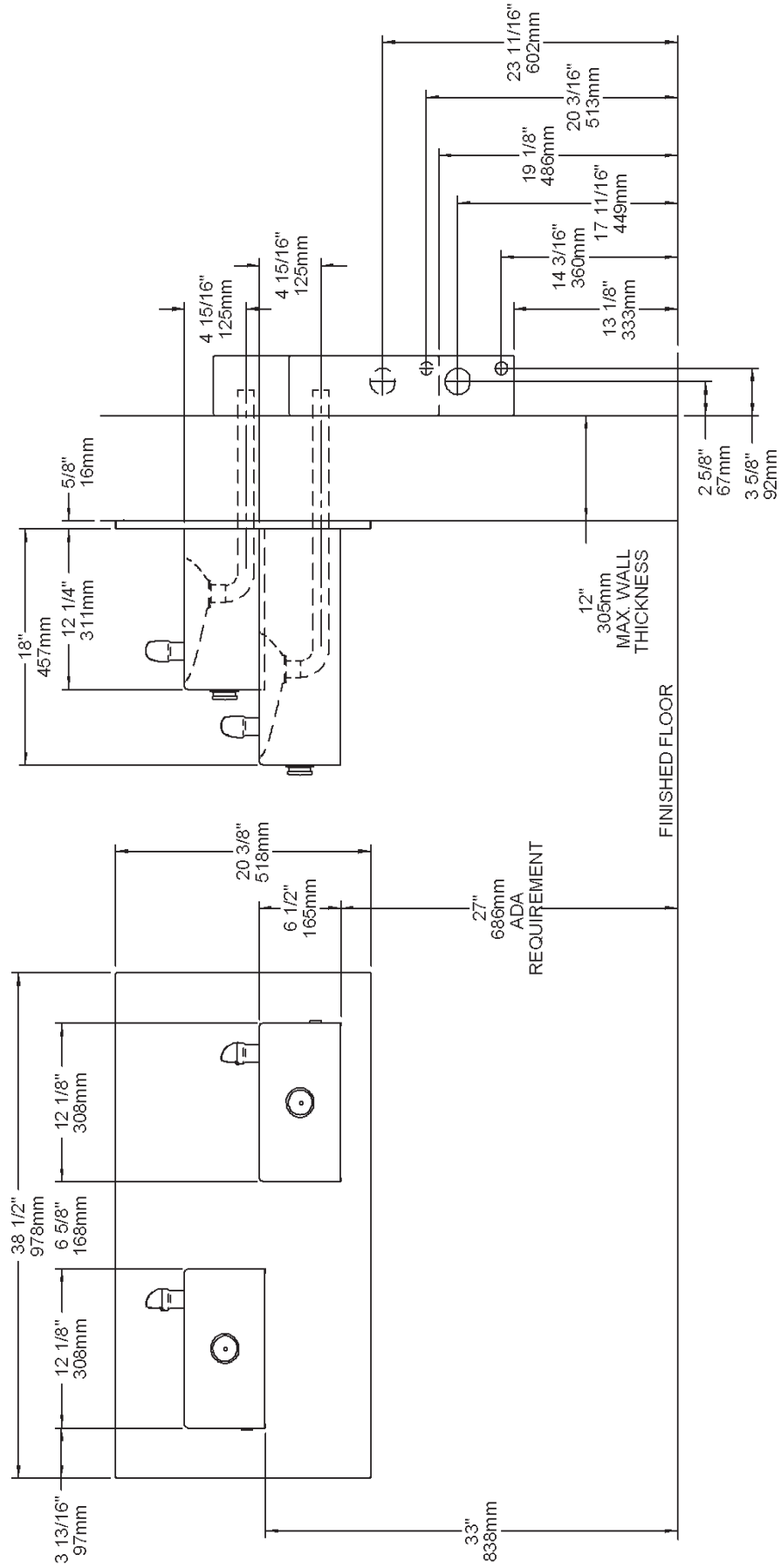
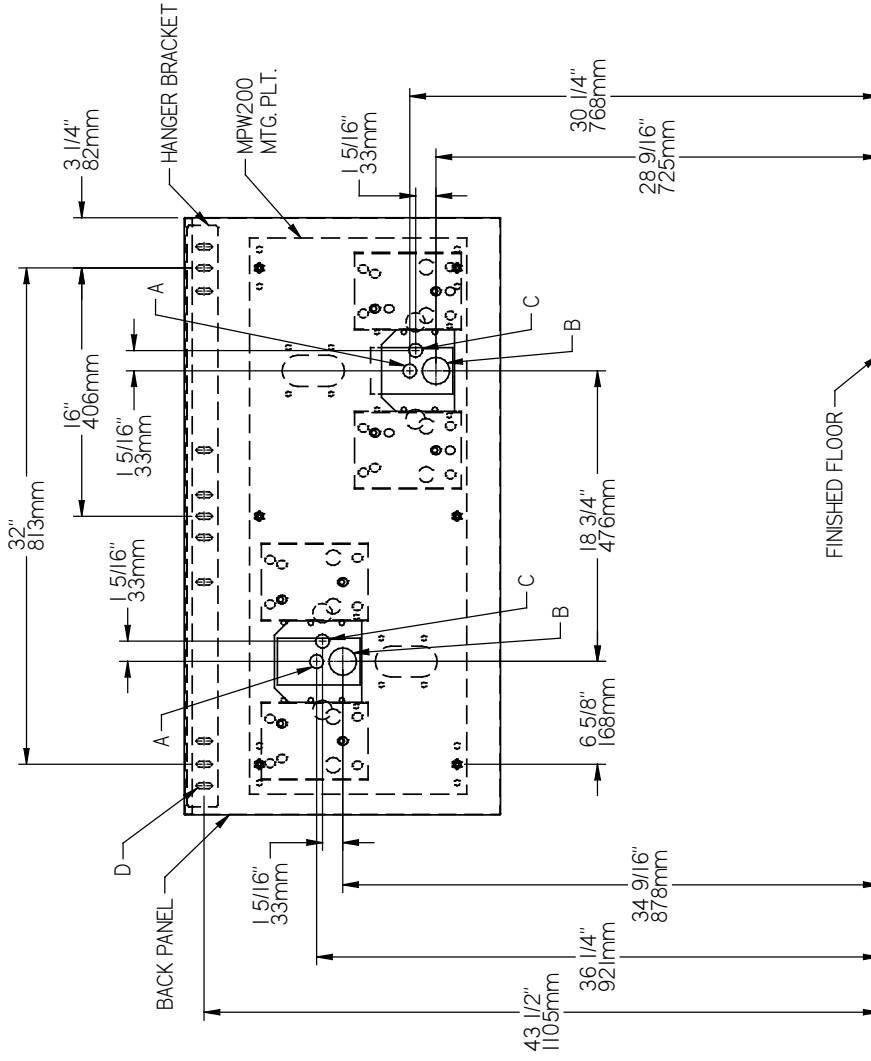
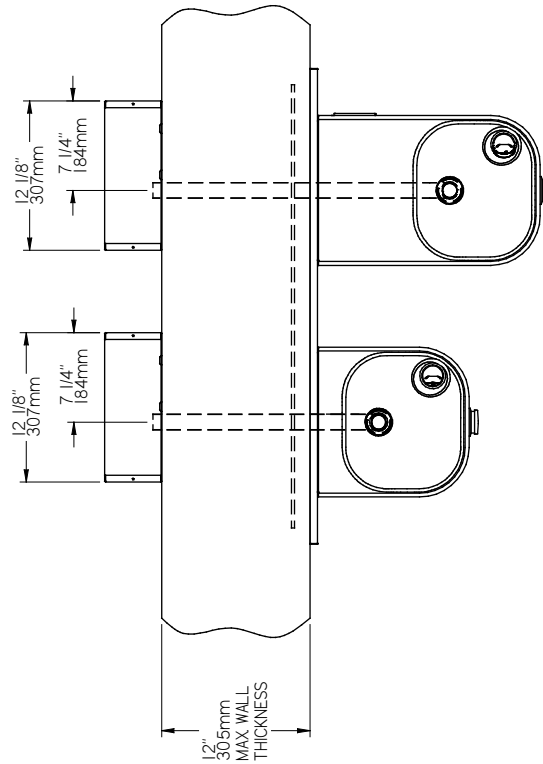


FIG. 5

**EDFP217FP W/MPW200 MOUNTING PLATE ROUGH-IN**



**FIG. 6**



**LEGEND**

- A = 7/8" DIA. (22mm) HOLE FOR WATER SUPPLY TUBE
- B = 1-3/4" DIA. (44mm) HOLE FOR WASTE LINE
- C = 7/8" DIA. (22mm) HOLE FOR OPERATING CABLE
- D = 1/4" DIA. (6mm) HOLE FOR MOUNTING PLATE TO WALL

\*Note: All dimensions are taken from the finished floor on the side of the wall the fountain is installed on.

EDFP217FP W/MPW200 MOUNTING PLATE ROUGH-IN

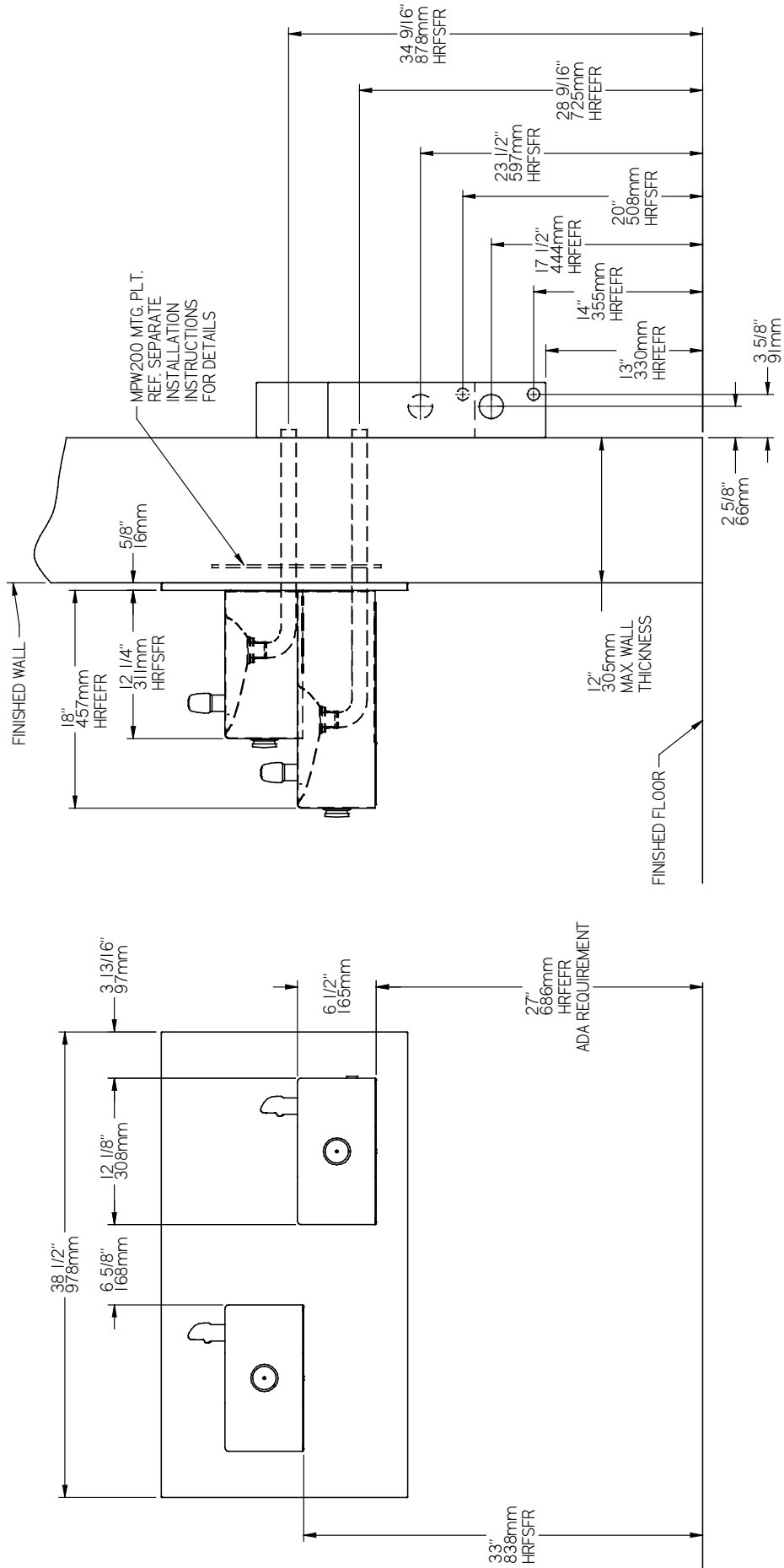


FIG. 7



EDFP217FPRA W/MPW200 MOUNTING PLATE ROUGH-IN

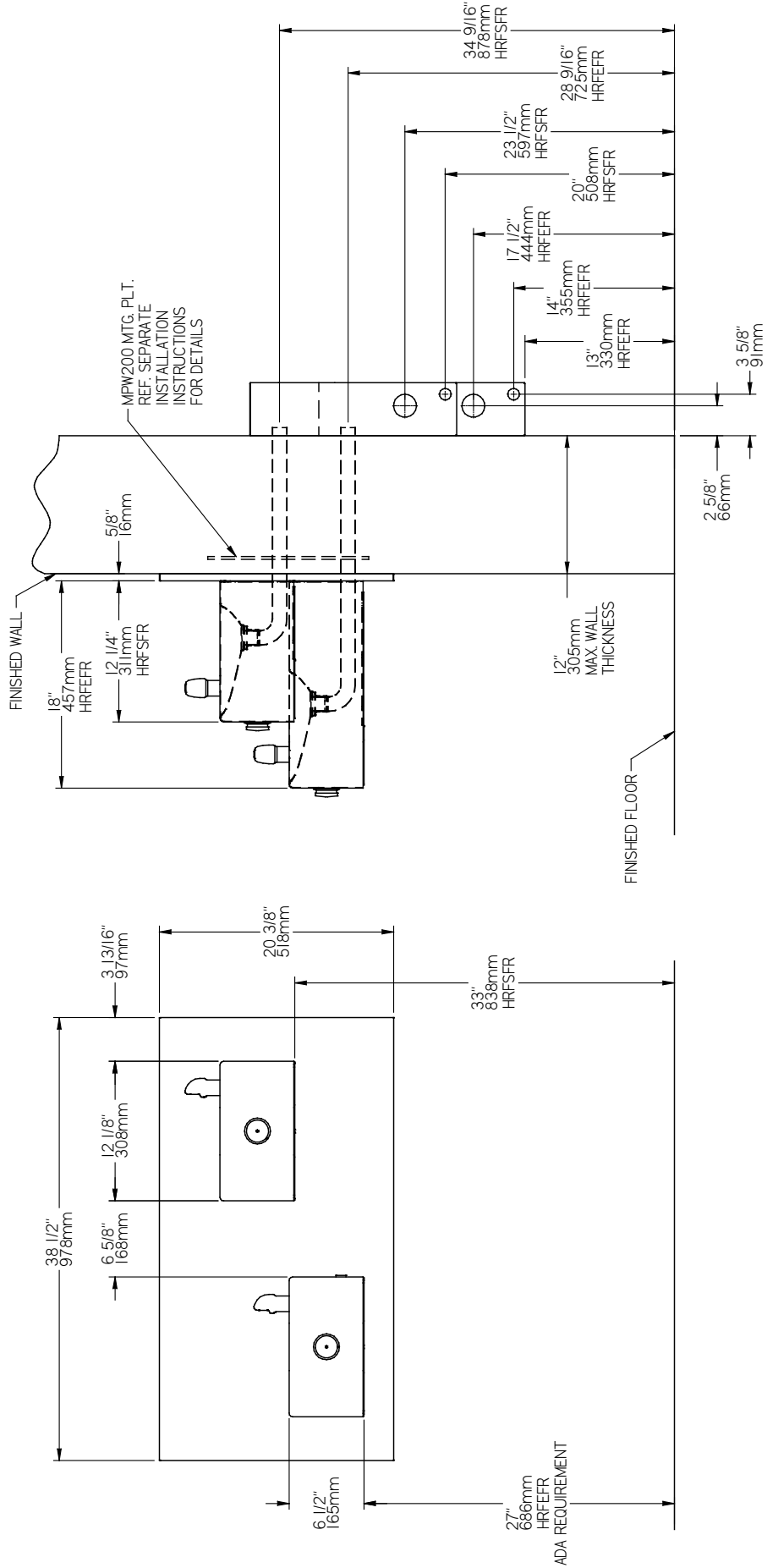


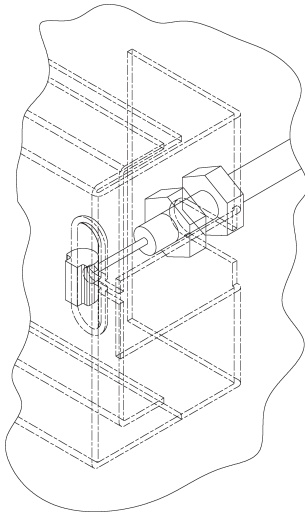
FIG. 9

**CABLE SHEATH ADJUSTMENT**

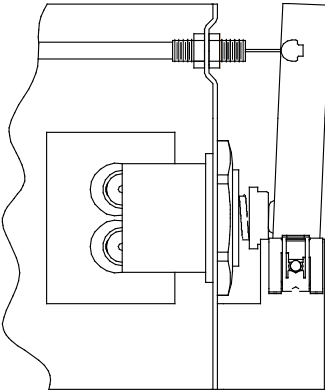
To Increase Free Play



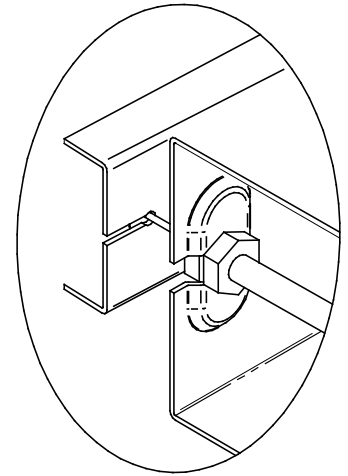
To Reduce Free Play



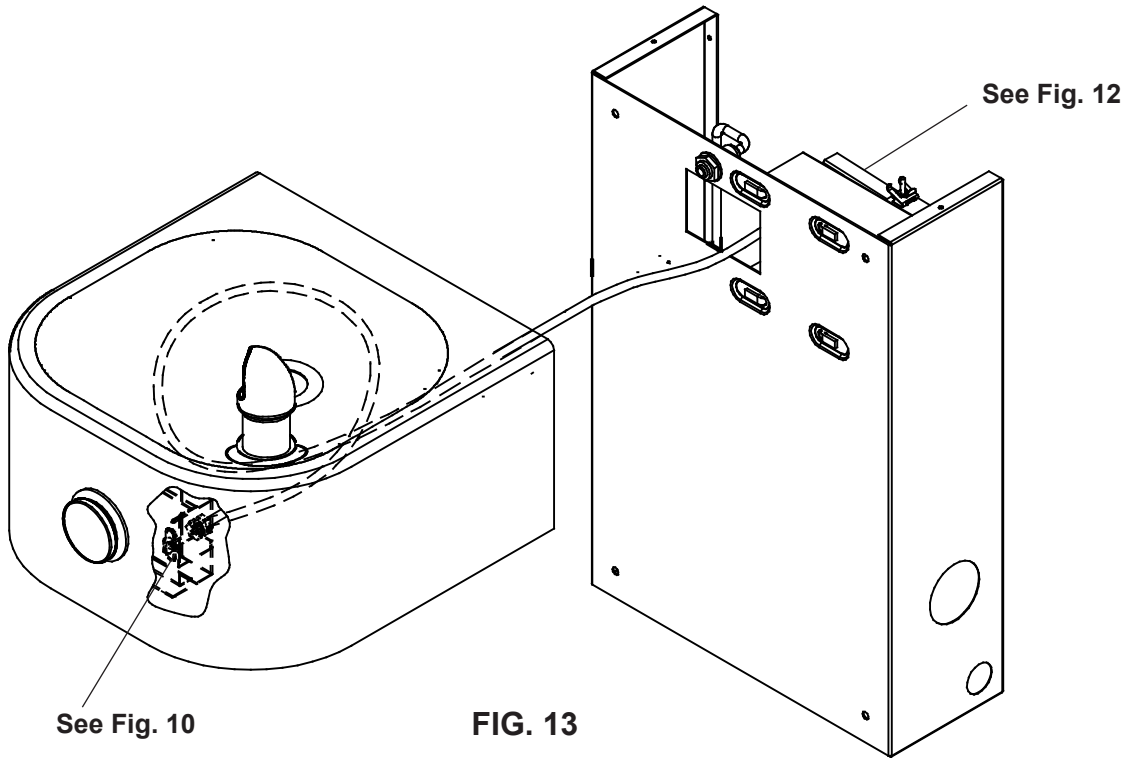
**FIG. 10**



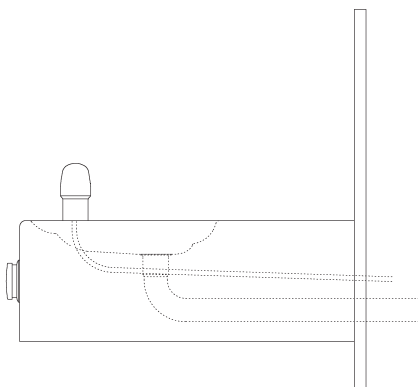
**FIG. 11**



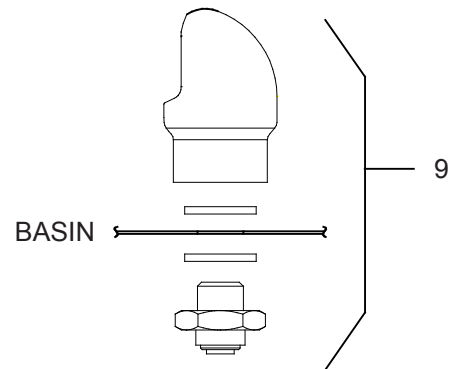
**FIG. 12**



**FIG. 13**



**FIG. 14**



**FIG. 15**

PARTS LIST

ITEM NO.	PART NO.	DESCRIPTION
1	56092C	POLY TUBING-CUT TO LENGTH
2	75570C	SCREW #10 X .50 PINNED TORX
3	56280C	EDGE TRIM
4	28823C	BRACKET - REGULATOR MOUNTING
5	27945C	BRACKET - BASIN
6	27946C	BRACKET - BASIN PIVOT
7	40045C	HEX NUT 1-5/16
8	40206000	RETAINER
9	98118C	BUBBLER ASSEMBLY
10	45662C	PUSH BUTTON
11	45663C	SLEEVE-PUSH BUTTON GUIDE
12	50198C	SNAP BUSHING
13	51667C	BUMPER-REG. VALVE ASSY
14	55919C	PUSH BUTTON (EXTENSION)
15	70425C	PIVOT ROD
16	28782C	FOUNTAIN ARM - SHORT
17	28783C	FOUNTAIN ARM - LONG
18	55000661	BOTTOM COVER PLATE - SHORT
19	55000665	BOTTOM COVER PLATE - LONG
20	28250C	BACK PANEL RH ADA
	28252C	BACK PANEL LH ADA
21	75672C	CAP SCREW
22	72000833	WASTE ARM ASSY
23	28234C	BRACE - CHANNEL
NS	27090C	BRKT - HANGER PANEL
NS	75520C	BIT - PINNED TORX

NS - NOT SHOWN

FIG. 16

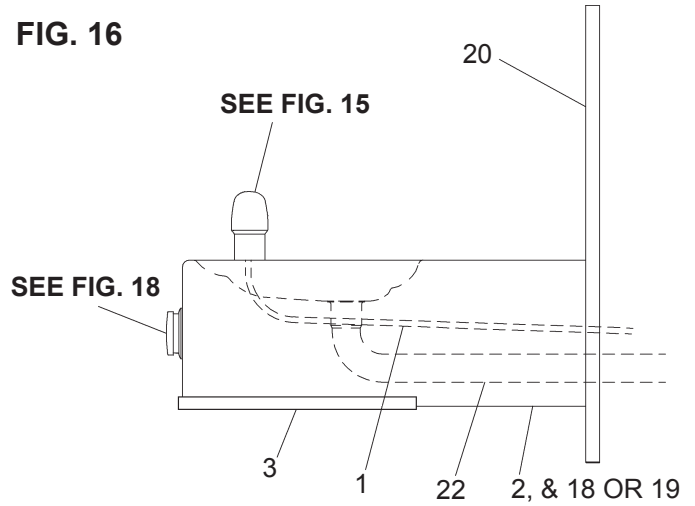


FIG. 17

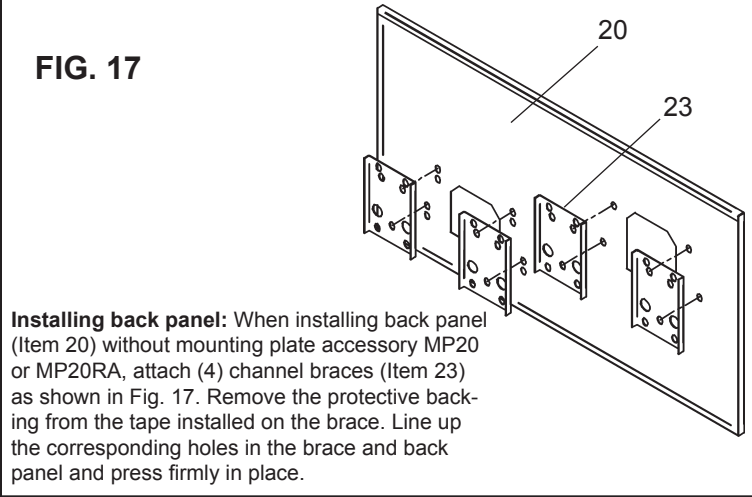


FIG. 18

