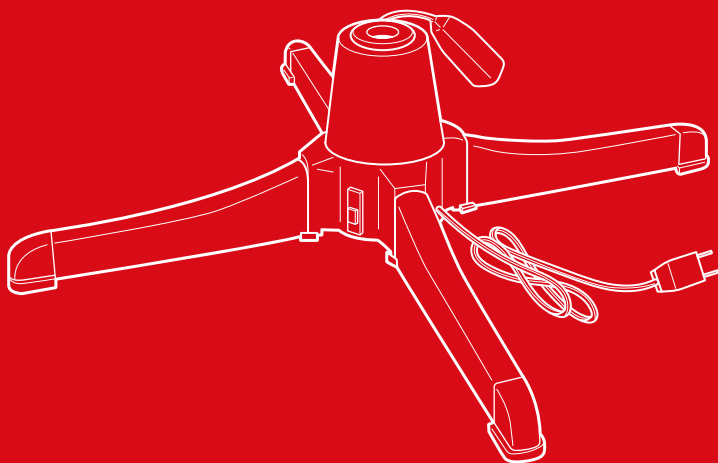




bestchoiceproducts



INSTRUCTION MANUAL

Electric Rotating Christmas
Tree Stand

NOTICE

- This item is not a toy. Do not allow children to operate this item.
- This tree stand is for an artificial tree only.
- Place tree stand on a stable and level surface.
- Item is intended for indoor use only.
- This seasonal product is not intended for permanent installation or use.
- If tree has lights, make sure lights are secure and do not get tangled during rotation.
- Do not use or store this item in the proximity of open flame, flammable/combustible chemicals, or other strong heat sources.
- If any parts are missing, broken, damaged, or worn, stop using this item until repairs are made and/or factory replacement parts are installed.
- Do not use this item in a way inconsistent with the manufacturer's instructions as this could void the product warranty.
- Remove tree from stand before storage. Store in a cool and dry place protected from sunlight.

WARNING

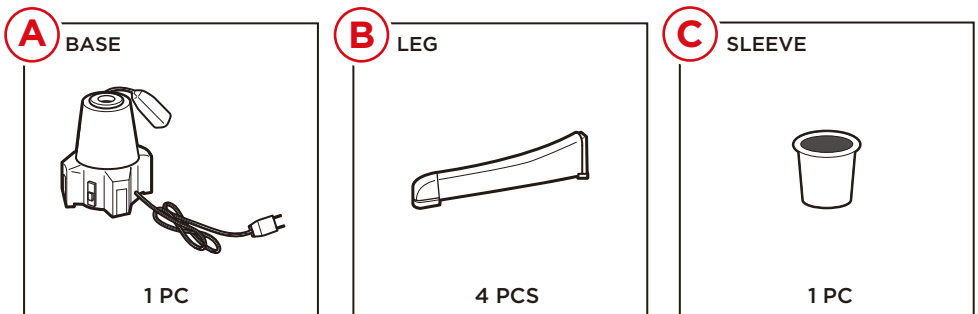
- Unplug item during assembly, disassembly, and if left unattended.
- Do not place this item in a wet location.
- Do not close doors or windows on the wires or power cord.
- Do not secure wires or cord with staples, nails, or sharp hooks.
- Do not cover item with cloth, paper, or any other material.
- This item has a polarized plug (one blade wider than the other), so the plug must be oriented correctly to fit into the plug.
- This item has overload protection (fuse). A blown fuse indicates an overload or short-circuit situation.

WEIGHT CAPACITY: 80 lbs.

MAX TREE HEIGHT: 7.5 ft.

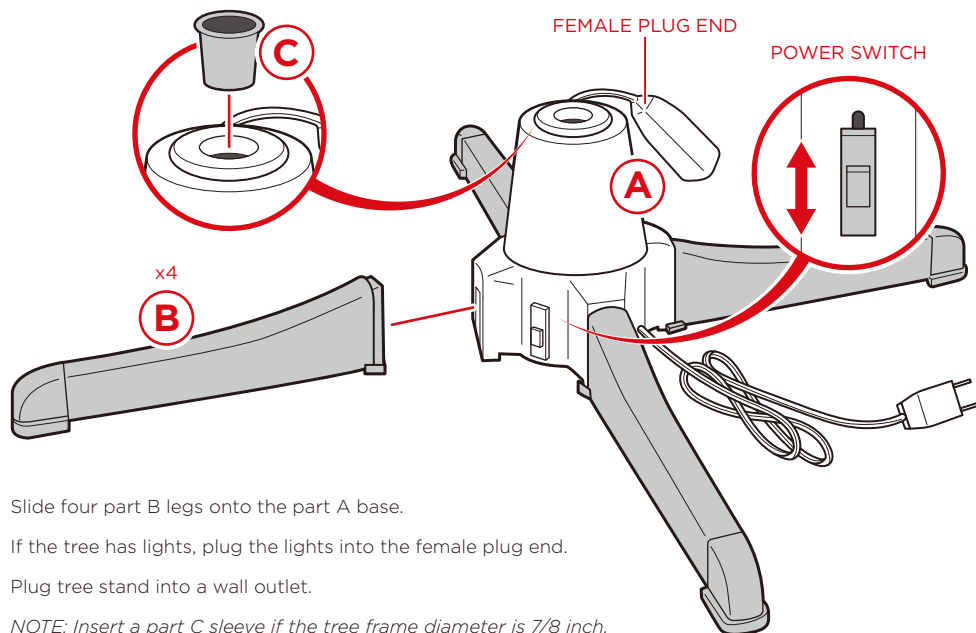
FRAME DIAMETER: 1.25 in. or 7/8 in. (with sleeve)

PARTS



PRODUCT ASSEMBLY

Please retain these instructions for future reference.



Slide four part B legs onto the part A base.

If the tree has lights, plug the lights into the female plug end.

Plug tree stand into a wall outlet.

NOTE: Insert a part C sleeve if the tree frame diameter is 7/8 inch.

POWER SWITCH

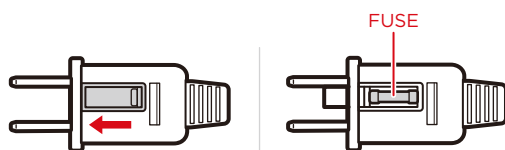
- **UP:** Lights on, rotation off
- **MIDDLE:** Off
- **DOWN:** Lights on, rotation on

CHANGING THE FUSE

The following should **ONLY** be conducted by a qualified professional:

1. Pull the power cord from the outlet.
2. Slide open the fuse access cover by pushing it towards the blades of the plug.
3. Carefully remove the fuse. Push the fuse from the other side or turn the fuse holder over.
4. Replace fuse with a **5 Amp, 125 Volt** fuse only.
5. Close the fuse access cover.

WARNING: Do not replace plug as it contains a fuse that should not be removed. Discard product if the plug is damaged.





HELP CENTER



Question about your product? We're here to help. Visit us at:

help.bestchoiceproducts.com



Chat Support



Product Inquiry



Orders FAQ



Product Assembly



Returns & Refunds

PRODUCT WARRANTY INFORMATION

All items can be returned for any reason within 60 days of the receipt and will receive a full refund as long as the item is returned in its original product packaging and all accessories from its original shipment are included. All returned items will receive a full refund back to the original payment method. All returned items will not be charged a re-stocking fee.

All returned items require an RA (Return Authorization) number, which can only be provided by a Best Choice Products Customer Service Representative when the return request is submitted. Items received without an RA may not be accepted or may increase your return processing time. Once an item has been received by Best Choice Products, refunds or replacements will be processed within 5 business days.

All returns must be shipped back to the Best Choice Products Return Center at the customer's expense. If the reason for return is a result of an error by Best Choice Products then Best Choice Products will provide a pre-paid shipping label via email. Boxes for return shipping will not be provided by Best Choice Products, and is the customer's responsibility to either use the original shipping boxes or purchase new boxes.

Pictures may be required for some returns to ensure an item is not damaged prior to its return. Items returned are not considered undamaged until they are received by Best Choice Products and verified as such. All damages to items are the customer's responsibility until the item has been received by and acknowledge by Best Choice Products as undamaged.



WARNING

Manufacturer and seller expressly disclaim any and all liability for personal injury, property damage or loss, whether direct, indirect, or incidental, resulting from the incorrect attachment, improper use, inadequate maintenance, or neglect of this product.