



# HOW TO FIX THE STEERING & TURNING FUNCTION ON THE DISNEY PRINCESS CARRIAGE

**⚠ WARNING:** Disconnect power supply before conducting any maintenance procedures.

## TOOLS REQUIRED



Phillips Screwdriver  
(not included)

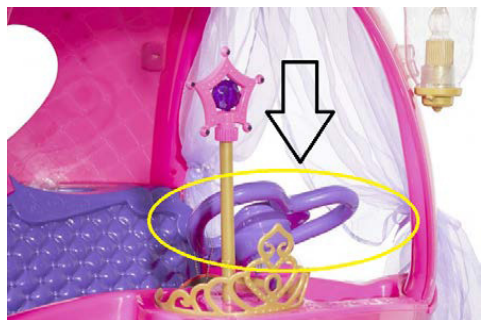
### STEP 1

Unscrew and remove purple plastic front axle cover to expose front axle and steering column. It is not necessary to remove wheels.



### STEP 2

Remove the M5x45 Machine Screw and nut from steering wheel and pull steering wheel off steering column rod. Gently push steering column rod down.



### STEP 3

If the steering function is not working properly, causing your Disney Princess Carriage to turn in the opposite direction, the steering column rod may have been assembled backwards. This restricts proper turning abilities as the hinge hits a metal piece on the frame.



### STEP 4

Unscrew the bolt at the hinge that is connected to the steering column.



### STEP 5

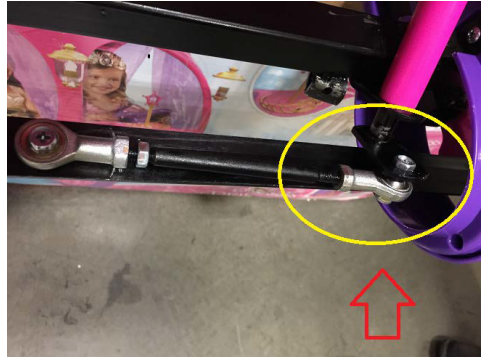
Pull the hinge towards you, away from the metal frame.



## STEP 6

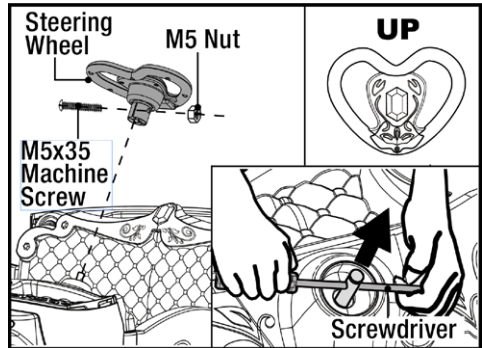
Screw bolt back onto the hinge, as shown in the photograph. The hinge should be away from the metal frame, allowing proper steering and turning function.

**⚠ WARNING:** Make sure that the hinge bolt is securely tightened.



## STEP 7

Reattach Steering wheel by inserting a screwdriver in the hole in the steering column and lifting as high as possible so that when inserting the steering wheel onto the end of the steering column, it can line up the hole in the steering wheel with the hole in the steering column. Remove the screw driver and reinsert the M5x45 machine screw through the aligned holes, attach the M5 nut and tighten securely.



## STEP 8

Test steering function by turning steering wheel. The wheels should turn in the proper direction. Replace and screw on purple plastic front axle cover. Your Disney Princess Carriage is now ready to ride! Enjoy!



Dynacraft Customer Service

**1-800-551-0032**

8AM to 5PM Eastern Standard Time



**DO NOT return this item to the store.  
Please call Dynacraft for assistance.**

Please have the following information available when you call:

Model Number:	(sample: 8802-33)
Production Date:	(sample: 03.03.2015)
Serial Number:	(sample: DA0233HD00001)

**Having this information will be required and helps us handle  
your call more effectively.**



**DYNACRAFT®**

---

**Dynacraft BSC, Inc.**  
1501 Crossgate Road  
Port Wentworth, GA 31407  
Call Toll Free 1-800-551-0032  
Monday – Friday 8AM to 5PM EST  
[www.dynacraftwheels.com](http://www.dynacraftwheels.com)  
©2019 All rights reserved