

VIRGINIATILE

Design that shapes living.



NILES

VIRGINIA TILE COMPANY

COLOR-BODY PORCELAIN

Product Shown: VTC Niles Dark Gray 24" x 48" ,
VTC Niles Black 24" x 48"

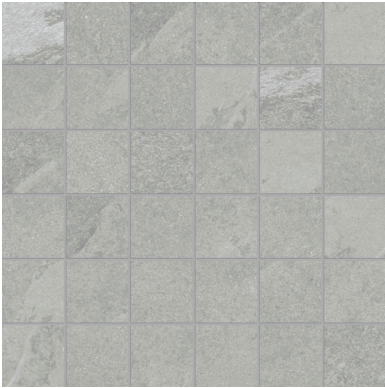


THE VISUAL APPEAL OF SLATE

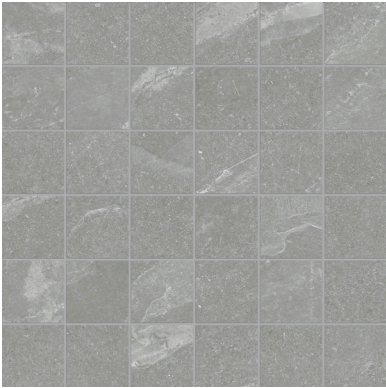


Product Shown: VTC Niles Light Gray,
VTC Niles Dark Gray

COLORS



NILES Light Gray
VTC NILI

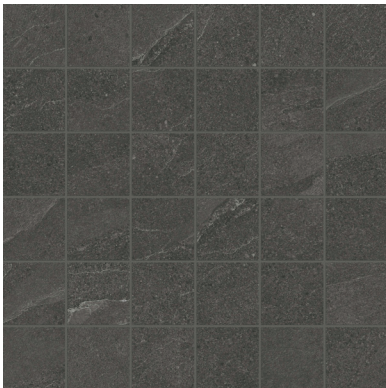


NILES Medium Gray
VTC NIME

*Please note - each tile is unique and will have inherent variations from piece to piece. It is recommended to compare a few samples.



NILES Dark Gray
VTC NIDA



NILES Black
VTC NIBL

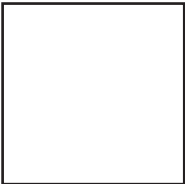
FIELD TILE

10.3mm



24" x48"

9.3mm



24" x 24"

8.4mm



12" x24"

DECORATIVE

2" x 2" - Mosaic Small Squares
2" - Hexagon Mosaic
6" Hexagon Mosaics

TRIM

3" x 24" Bullnose

LIGHT GRAY

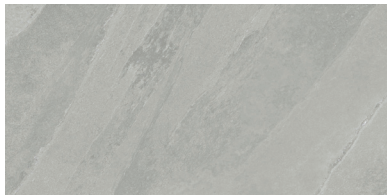
FIELD TILE



24" x 48" Matte Rectified 10.3mm



24" x 24" Matte Rectified 9.3mm

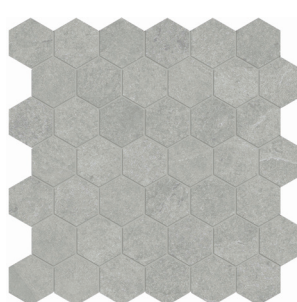


12" x 24" Matte Rectified 8.4mm

DECORATIVE



2" x 2" Mosaic Small Square 8.4mm



2" Hexagon Mosaic 8.4mm



6" Hexagon Mosaic 8.4mm

TRIM



3" x 24" Bullnose

MEDIUM GRAY

FIELD TILE



24" x 48" Matte Rectified 10.3mm

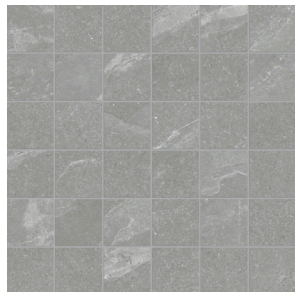


24" x 24" Matte Rectified
9.3mm



12" x 24" Matte Rectified
8.4mm

DECORATIVE



2" x 2" Mosaic Small
Square 8.4mm



2" Hexagon Mosaic
8.4mm



6" Hexagon Mosaic
8.4mm

TRIM



DARK GRAY

FIELD TILE



24" x 48" Matte Rectified 10.3mm



24" x 24" Matte Rectified 9.3mm



12" x 24" Matte Rectified 8.4mm

DECORATIVE



2" x 2" Mosaic Small Square 8.4mm



2" Hexagon Mosaic 8.4mm



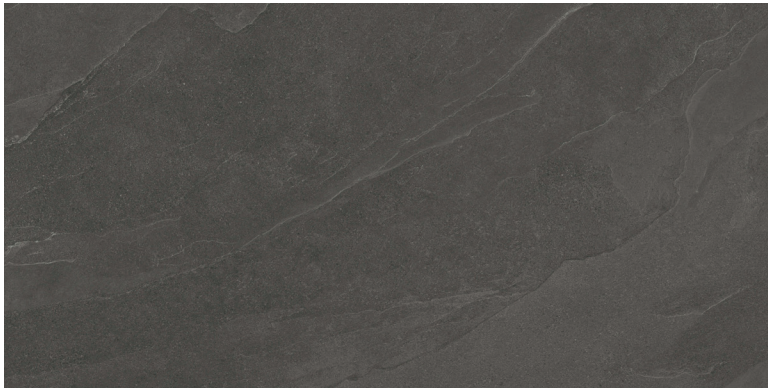
6" Hexagon Mosaic 8.4mm

TRIM



BLACK

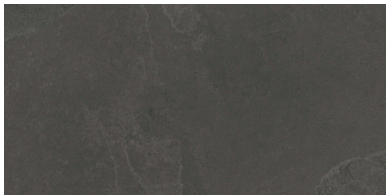
FIELD TILE



24" x 48" Matte Rectified 10.3mm

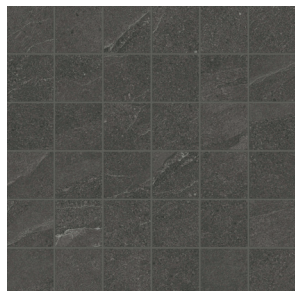


24" x 24" Matte Rectified 9.3mm



12" x 24" Matte Rectified 8.4mm

DECORATIVE



2" x 2" Mosaic Small Square 8.4mm



2" Hexagon Mosaic 8.4mm



6" Hexagon Mosaic 8.4mm

TRIM



TECHNICAL INFORMATION



V2 Slight
Variation

Minimum variation. Visible variation,
but similar shades.



Recommend offset
pattern $\leq 33\%$

Recommendation of 33% or less
offset for tiles with one or more
sides 15" or greater



Frost
Resistant

Frost-resistant, polished and
matte finishes.



DCOF: ≥ 0.50



Ready-Ship



Contains
Recycled
Content



Made
in Turkey

CARE AND MAINTENANCE

PORCELAIN CARE AND MAINTENANCE

INITIAL CLEANING

Proper cleaning after installation is essential for future maintenance. Remove excess grout using clean water and a sponge. If grout leaves behind a white haze, it can be wiped off using a clean cloth after grout has cured. Stubborn residue may require the use of a grout haze remover solution or neutral detergent. Thoroughly rinse the area with clean water and dry with a clean towel or wet vacuum.

ROUTINE MAINTENANCE

Immediately wipe up any spills and clean the area using a damp cloth or sponge. Remove loose soil using a broom or vacuum. To remove stubborn surface debris, use a scraper or putty knife. Wipe the area with a PH-neutral and soapless cleaner. Rinse with clear water and wipe dry to prevent residue. Do not use cleaning wax, oil-based cleaners, ammonia, sealants, or products containing acid or bleach for routine maintenance. Avoid using abrasive cleaning products such as steel wool.

ILLINOIS

DOWNTOWN CHICAGO

345 N. Wells Suite 200
Chicago, IL 60654
312-380-5400

ELK GROVE VILLAGE

1601 Estes Ave.
Elk Grove Village, IL 60007
630-595-0515

IOWA

CLIVE

2001 NW 92nd Ct.
Clive, IA 50325
515-224-1200

KANSAS

KANSAS CITY

5100 Kansas Avenue
Kansas City, KS 66106
913-573-0600

WICHITA

2140 W. Harry Court
Wichita, KS 67213
316-265-6653

MICHIGAN

FARMINGTON HILLS

24404 Indoplex Circle
Farmington Hills, MI 48335
248-476-7850

GRAND RAPIDS

3440 Broadmoor S.E.
Grand Rapids, MI 49512
616-942-6200

TROY

900 W. Maple Rd. Suite 100
Troy, MI 48064
248-649-4422

LIVONIA CORPORATE HEADQUARTERS

28320 Plymouth Road
Livonia, Michigan 48150
734-762-2400

MINNESOTA

PLYMOUTH

1820 Berkshire Ln.
North Plymouth, MN 55441
763-559-5531

MISSOURI

SPRINGFIELD

2727 N. Lecompte Rd.
Springfield, MO 65803
417-862-7272

ST. LOUIS

9215 Dielman Industrial Dr.
St. Louis, MO 63132
314-995-9900

NEBRASKA

OMAHA

10501 I Street
Omaha, NE 68127
402-331-0665

OHIO

BROOKLYN HEIGHTS

4749 Spring Rd.
Brooklyn Heights, OH 44131
216-741-8400

WARRENSVILLE HEIGHTS

4670 Richmond Rd.
Warrensville Heights, OH 44128
216-591-1660

OKLAHOMA

OKLAHOMA CITY

5600 SW 36th St. Suite C
Oklahoma City, OK 73179
405-232-7141

TULSA

11915 East 51st St.
Tulsa, OK 74146
918-461-0177

WISCONSIN

MENOMONEE FALLS

W135 N5511 Campbell Dr.
Menomonee Falls, WI 53051
262-781-2551



VIRGINIATILE

Design that shapes living.

Good design is born of creativity
and imagination, but as we build
and renovate, update and expand,
the materials we select will define
the quality of the spaces we live in
beyond what meets the eye.

virginiatile.com

