

# USB KVM Switch

2 Port USB KVM Switch with Integrated Cables and Audio Switching

SV221MICROUA

Instruction Manual



Actual product may vary from photo

**StarTech.com**

The Professionals' Source for Hard-to-Find Computer Parts

## **FCC Compliance Statement**

This equipment has been tested and found to comply with the limits for a Class B digital device, pursuant to part 15 of the FCC Rules. These limits are designed to provide reasonable protection against harmful interference in a residential installation. This equipment generates, uses and can radiate radio frequency energy and, if not installed and used in accordance with the instructions, may cause harmful interference to radio communications. However, there is no guarantee that interference will not occur in a particular installation. If this equipment does cause harmful interference to radio or television reception, which can be determined by turning the equipment off and on, the user is encouraged to try to correct the interference by one or more of the following measures:

- Reorient or relocate the receiving antenna.
- Increase the separation between the equipment and receiver.
- Connect the equipment into an outlet on a circuit different from that to which the receiver is connected.
- Consult the dealer or an experienced radio/TV technician for help.

## **Use of Trademarks, Registered Trademarks, and other Protected Names and Symbols**

This manual may make reference to trademarks, registered trademarks, and other protected names and/or symbols of third-party companies not related in any way to StarTech.com. Where they occur these references are for illustrative purposes only and do not represent an endorsement of a product or service by StarTech.com, or an endorsement of the product(s) to which this manual applies by the third-party company in question. Regardless of any direct acknowledgement elsewhere in the body of this document, StarTech.com hereby acknowledges that all trademarks, registered trademarks, service marks, and other protected names and/or symbols contained in this manual and related documents are the property of their respective holders.

## Table of Contents

<b>Introduction</b> .....	<b>1</b>
<b>Before You Begin</b> .....	<b>1</b>
<b>Installation</b> .....	<b>2</b>
Connecting Computers to the KVM Switch	
Installing the Windows Management Software (Optional) .....	3
Using the Windows Management Software .....	3
Hot Key Configuration .....	4
<b>Using the KVM Switch</b> .....	<b>5</b>
<b>Technical Support</b> .....	<b>6</b>
<b>Warranty Information</b> .....	<b>6</b>

## **Introduction**

Thank you for purchasing a StarTech.com personal 2 port USB KVM switch. This KVM has a small footprint with integrated cables that won't clutter your workspace, and includes audio switching so you only need one set of speakers. You can use customizable keyboard hotkeys to switch computers, or the push-button interface on the front of the KVM.

## **Features**

- Supports USB peripherals for easy installation
- Audio switching support eliminates the need for two sets of speakers
- Hotkey switching with customizable key combinations
- Integrated cable design prevents clutter and avoids hassles

## **Before You Begin**

### **System Requirements**

- One set of USB console peripherals (keyboard, mouse) and speakers (optional)
- Computers must have an available USB port, and a sound card (optional)
- Computers must have a CD-ROM or other compatible optical drive for optional software installation (Windows only)

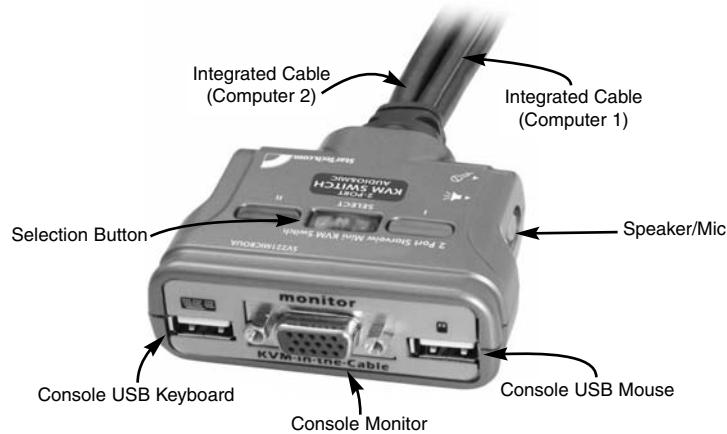
### **Contents**

This package should contain:

- 1 x KVM Switch
- 1 x Installation CD
- 1 x User Manual

## Installation

Please read this section thoroughly before installing the KVM switch.



### Connecting Computers to the KVM Switch

1. Remove any existing keyboards, mice, monitors, and speakers from the computers that you wish to use with the KVM switch.
2. Connect a USB keyboard to the console port on the front of the KVM switch, marked with a keyboard icon (see above).
3. Connect a USB mouse to the console port on the front of the KVM switch, marked with a mouse icon (see above).
4. Connect a monitor to the console port on the front of the KVM switch, marked **Monitor** (see above).
5. Connect a microphone to the pink connector on the side of the KVM switch, also marked with a microphone icon (optional, see above).
6. Connect speakers to the green connector on the side of the KVM switch, also marked with a speaker icon (optional, see above).
7. Connect the integrated cable for computer 1 (corresponds to the LED indicator on the top of the KVM, as marked) to the USB, video, speaker, and microphone connectors on the computer. If you need assistance in identifying any ports, please consult the documentation for your computer. If you are not using the audio switching feature and did not connect a microphone and speakers to the KVM, you do not need to connect the microphone and speaker connectors to the computer.
8. Connect the integrated cable for computer 2 (corresponds to the LED indicator on the top of the KVM, as marked) to the USB, video, speaker, and microphone connectors on the computer. If you need assistance in identifying any ports, please consult the documentation for your computer. If you are not using the audio switching feature and did not connect a microphone and speakers to the KVM, you do not need to connect the microphone and speaker connectors to the computer.

9. Power on computer 1 and computer 2. You can now use the KVM switch.

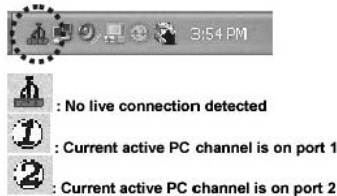
**(!) NOTE:** If you experience problems with Windows detecting the KVM switch, you may wish to connect the devices you will be using at the KVM console, restart the machine, and re-attach the KVM switch. This will allow Windows to configure itself to use USB input devices.

**(!) NOTE:** If at any time during the installation process Windows warns you about a driver file not being digitally signed, this is normal. Choose to continue the installation to complete the detection process.

### Installing the Windows Management Software (Optional)

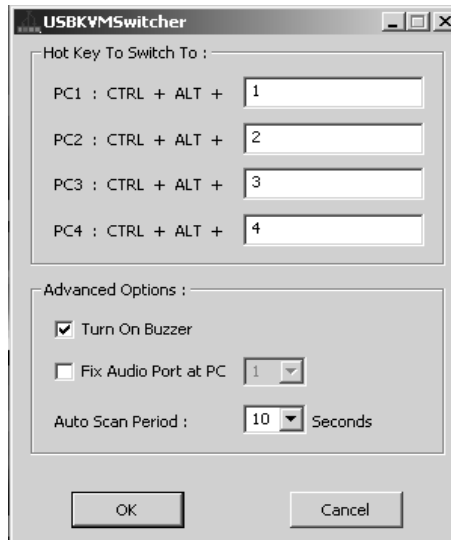
The software included with the KVM switch is designed for use with computers that use Windows 98, 98SE, ME, 2000, XP, or Server 2003. This software allows you to configure custom hotkey sequences for KVM features and provides a software menu you can use to switch computers, as an alternative to keyboard hotkeys or the push-button selector on the top of the KVM.

1. Once you have installed the KVM switch following the instructions above, insert the CD that came in the package in your computer's CD-ROM or other optical drive. The KVM software installation should start automatically. If it doesn't, open **My Computer** and double click the icon for the CD-ROM drive. Double click the **USBKVMIn.exe** file to start the setup program.
2. Walk through the setup process by accepting the default settings and choosing **Next** whenever prompted. Windows may warn you during the install process that the driver being installed is not digitally signed. If this occurs, choose to continue the installation. When the setup routine is complete, setup will notify you with a final screen. Click **Finish** to complete the setup process.
3. The software will now load each time Windows starts. You can open the configuration menu by double-clicking one of the following icons:



### Using the Windows Management Software

The management software allows you to configure custom hotkeys, turn the status buzzer indicator off or on, and use the autoscan feature. You can access the software by double clicking its icon on the taskbar, or you can right-click it once and choose the **Settings** option from the menu. You can also use this menu to activate Auto Scan and switch active computers.



### Hot Key Configuration

This setting configures custom key configurations that you can use to switch between PCs on the KVM. By default, the **[Ctrl] + [Alt] + [1]** hotkey sequence is active, where the **[1]** key is the number of the KVM port you wish to access. To use the custom hotkey feature, all keys must be pressed simultaneously. You can change the command key from the default to any letter or number on the keyboard. Control keys such as **[Tab]**, **[Esc]**, and **[Num Lock]** cannot be used.

### Turn On Buzzer

When checked, activates the audible notification when the port is changed.

### Fix Audio Port at PC

When checked, locks audio input to the selected port regardless of which KVM port is active. When unchecked, audio input is selected along with the KVM port.

### Auto Scan Period

Sets the amount of time the Auto Scan feature will wait between switching ports. Selectable between 10 ~ 60 seconds.

**NOTE:** Although there are options to change hotkeys for ports 3 and 4, they are inactive on this product.

## Using the KVM Switch

Once you have completed the installation process, you can use the following methods to select a KVM port:

**Selection Button:** You can switch between ports by press the button on the top of the KVM.

**Universal Hotkey:** The command **[Scroll Lock] - [Scroll Lock]** can be used with any operating system, including Windows computers with the KVM management software installed. This toggles control to the next KVM port.

**Customized Hotkey:** If you are using Windows-based computers and have installed the KVM management software, you can use the **[Ctrl] + [Alt] + [1]** sequence to switch computers. The **[1]** key corresponds to the key you have configured in the software (see the previous section for details).

**(!) NOTE:** You cannot use either keyboard hotkey sequence to select a port that does not have the USB cable connected or where the computer is powered off.

**(!) NOTE:** Mac users will need to use an IBM-compatible USB keyboard for the console since most Apple keyboards do not have a **[Scroll Lock]** key.

## **Technical Support**

StarTech.com's lifetime technical support is an integral part of our commitment to provide industry-leading solutions. If you ever need help with your product, visit [www.startech.com/support](http://www.startech.com/support) and access our comprehensive selection of online tools, documentation, and downloads.

## **Warranty Information**

This product is backed by a one-year warranty. In addition, StarTech.com warrants its products against defects in materials and workmanship for the periods noted, following the initial date of purchase. During this period, the products may be returned for repair, or replacement with equivalent products at our discretion. The warranty covers parts and labor costs only. StarTech.com does not warrant its products from defects or damages arising from misuse, abuse, alteration, or normal wear and tear.

## **Limitation of Liability**

In no event shall the liability of StarTech.com Ltd. and StarTech.com USA LLP (or their officers, directors, employees or agents) for any damages (whether direct or indirect, special, punitive, incidental, consequential, or otherwise), loss of profits, loss of business, or any pecuniary loss, arising out of or related to the use of the product exceed the actual price paid for the product.

Some states do not allow the exclusion or limitation of incidental or consequential damages. If such laws apply, the limitations or exclusions contained in this statement may not apply to you.

## **About StarTech.com**

StarTech.com is “The Professionals’ Source for Hard-to-Find Computer Parts”. Since 1985, we have been providing IT professionals with the quality products they need to complete their solutions. We offer an unmatched selection of computer parts, cables, server management solutions and A/V products and serve a worldwide market through our locations in the United States, Canada, the United Kingdom and Taiwan.

Visit **[www.startech.com](http://www.startech.com)** for complete information about all our products and to access exclusive interactive tools such as the Parts Finder and the KVM Reference Guide. StarTech.com makes it easy to complete almost any IT solution. Find out for yourself why our products lead the industry in performance, support, and value.