

UNIVERSAL[®]

SECURITY INSTRUMENTS

Carbon Monoxide Alarm, Plug-In, Replaceable Battery Back-Up Instruction Manual



Model No.: USI/CO/TRAVEL
RD-(846A-1NCAR)-39-001 Rev. A

Thank you for purchasing the USI/CO/TRAVEL carbon monoxide (CO) alarm. This CO alarm uses an advanced electrochemical sensor.

THIS EQUIPMENT SHOULD BE INSTALLED IN ACCORDANCE WITH THE NATIONAL FIRE PROTECTION ASSOCIATION'S STANDARD 72 (National Fire Protection Association, Batterymarch Park, Quincy, MA 02269). Typical installation drawing layouts for the device(s) indicating recommended locations and wiring methods which shall be in accordance with the applicable requirements outlined in the following: National Electrical Code or C22.1-12, Canadian Electrical Code, Part I, Safety Standard for Electrical Installations;

The National Fire Protection Association (NFPA) and the manufacturer recommend replacing this alarm ten years from the date code on back of the alarm, beyond which the device might no longer detect carbon monoxide accurately and should be immediately replaced. This instruction manual contains important information on starting operation and using the device.

▲ ATTENTION! - Please take a few minutes to thoroughly read the instruction manual and familiarize yourself and your family with its operation. Save it for future reference.

Note: Many times throughout this instruction manual, we will refer to Carbon Monoxide as "CO". Images are representative only. Actual product may vary slightly.

Supplier's Declaration of Conformity:
47 CFR § 2.1077 Compliance Information
Responsible Party: Feit Electric Company, Inc
4901 Gregg Road, Pico Rivera, CA 90660, USA
www.feit.com

Unique Identifier: USI/CO/TRAVEL

Table of Contents

1. Carbon Monoxide Alarm: Steps To Take When The Alarm Sounds
2. Product Safety Information
3. Product Features and Specifications
4. Where to Install Carbon Monoxide Alarms
5. Installation Instructions
6. Power Information and Battery Installation and Replacement
7. Alarm Operation And Testing
8. Troubleshooting
9. Carbon Monoxide (CO) Overview
10. Good Safety Habits: CO Safety Tips
11. How to Identify Nuisance Alarms
12. Maintenance Information
13. Warranty Information

1. Carbon Monoxide: Steps To Take When The Alarm Sounds

The alarm signal pattern is 4 short beeps followed by 5 seconds of silence, repeat; and the ALARM indicator (red) will be on with breathing pattern when the alarm is powered by AC mains and battery backup.

The alarm signal pattern is 4 short beeps followed by 5 seconds of silence, repeat. The ALARM indicator (red) will flash the same pattern when only powered by battery.

▲ WARNING! Carbon monoxide (CO) is a colorless, odorless, poisonous gas. You can't taste, see, or smell CO, but it can kill in just minutes.

This alarm will sound in a 4-beep pattern if life threatening levels of CO are detected.

If the alarm sounds:

- 1) Immediately evacuate all occupants from the space and go outdoors to fresh air.
- 2) Call emergency responders (911 or fire department) for help; notify the building or vehicle owner, as necessary.

2. Product Safety Information

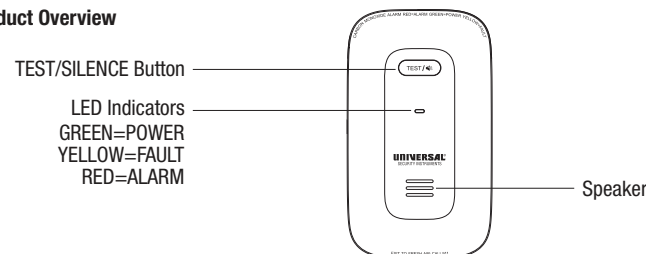
▲ CAUTION! Please read carefully and thoroughly.

- This CO alarm was designed to detect carbon monoxide from any source of combustion in a residential environment. It is not designed for use in recreational vehicle (RV) or boat.
- This CO alarm will not protect against the risk of carbon monoxide poisoning when the battery has drained and AC power is disconnected.
- This CO alarm was designed for indoor use only. Do not expose to rain or moisture. Do not drop or strike the detector. Do not open or tamper with the alarm as this could cause malfunction.
- Installation of the alarm should not be used as a substitute for proper installation, use and maintenance of fuel burning appliances including appropriate ventilation and exhaust systems.
- This CO alarm should be installed by a competent person.
- This CO alarm is not intended to alert hearing impaired individuals.
- Instructions that the replacement date that appears on the device is the date beyond which the device might no longer detect carbon monoxide accurately and should be immediately replaced.
- **WARNING!** - PLEASE READ CAREFULLY AND THOROUGHLY.
- Do NOT try to repair the CO alarm because there is the risk of electric shock or malfunction if the CO alarm is tampered with.
- Individuals with medical problems may consider using warning devices which provide audible and visual signals for carbon monoxide concentrations below 30 ppm. This CO alarm has not been investigated for carbon monoxide detection below 70 PPM.
- **ATTENTION! THIS CO ALARM WILL ONLY INDICATE THE PRESENCE OF CARBON MONOXIDE GAS AT THE SENSOR. CARBON MONOXIDE GAS MIGHT BE PRESENT IN OTHER AREAS.**
- THIS CO ALARM IS DESIGNED TO PROTECT AGAINST THE ACUTE EFFECTS OF CARBON MONOXIDE EXPOSURE. IT WILL NOT FULLY SAFEGUARD INDIVIDUALS WITH SPECIFIC MEDICAL CONDITIONS. IF IN DOUBT CONSULT A MEDICAL PRACTITIONER.
- THIS CO ALARM IS INTENDED FOR USE IN ORDINARY INDOOR RESIDENTIAL AREAS. IT IS NOT DESIGNED TO MEASURE COMPLIANCE WITH Occupational Safety and Health Administration (OSHA) COMMERCIAL AND INDUSTRIAL STANDARDS.
- THIS CO ALARM IS DESIGNED TO DETECT CARBON MONOXIDE GAS FROM ANY SOURCE OF COMBUSTION. IT IS NOT DESIGNED TO DETECT SMOKE, FIRE, OR ANY OTHER GASES.

1. The TEST/SILENCE button accurately tests the CO alarm functions. Do not use any other test method. Test the CO alarm weekly to ensure proper operation. Do not install in non-residential buildings. The CO alarm is not a substitute for a complete alarm system.
2. If you're sure it is not a real alarm warning, open windows or fan the air around the CO alarm to silence it.
3. Observe and follow all local and national electrical codes and building codes for installation.
4. This CO alarm is designed for residential use only. In multi-level buildings, each individual living unit should have its own CO alarm. Do not install in non-residential environments.
5. Install a CO alarm in every room and on every level of your home. CO may not always reach the alarm due to various factors. For example, if CO accumulates in a remote part of the home, such as another level, in a chimney, wall, roof, or behind a closed door, the CO may not reach the alarm in time to alert household members. This CO alarm will only promptly detect dangerous CO levels in the area or room where it is installed.
6. This CO alarm may not always alert every household member. The alarm horn is loud to alert individuals to potential danger. However, there may be circumstances where a household member might not hear the alarm due to factors such as outdoor or indoor noise, deep sleep, drug or alcohol use, or hearing impairment. If you suspect that this device may not alert a household member, you should install and maintain additional CO alarms with visual or vibrating alerts. Household members must hear the alarm's warning sound and respond quickly to reduce the risk of damage, injury, or death from CO exposure, especially if a household member is hearing impaired.
7. This CO alarm can only sound its alarm when it detects dangerous levels of CO in the air. It does not detect smoke, heat, flame, or other gases. The CO alarm is designed to provide an audible warning of dangerous CO levels.
8. This CO alarm has limitations. It is not foolproof and is not a substitute for insurance. Homeowners and renters should ensure their lives and property are insured. Additionally, the device may fail at any time. For this reason, you must test the device weekly and replace it every 10 years.

3. Product Features and Specifications

Product Overview



POWER indicator (green)

The green indicator is used to indicate power status of the CO alarm. The power indicator (green) will always light when connecting the AC power supply. And the power indicator (green) will flash every 40 seconds when only battery connecting.

FAULT indicator (yellow)

The yellow indicator is used to indicate malfunctions or low battery warning or end-of-life status of the CO alarm.

ALARM Indicator (Red)

The red indicator signals the alarm status of the CO alarm.

TEST/SILENCE Button

The TEST/SILENCE button tests the CO alarm and silences it during an alarm. Press TEST/SILENCE button three times consecutively to test the alarm, or press briefly to activate the SILENCE function.

Speaker

The speaker emits CO alarm warnings and abnormal condition alerts.

Model: USI/CO/TRAVEL

Product Standards: Conf. to UL STD 2034

Power Supply: 120V AC, 60Hz, 60mA max, 3V DC (1pcs CR123A battery)

Recommend Battery Type: HUIDERUI CR123A

Sensor of CO: Electrochemical

CO Alarm Sensitivity Setting (Conforms to UL 2034):

- 30ppm without alarm in 30 days
- 70ppm between 60 to 240 minutes
- 150ppm between 10 to 50 minutes
- 400ppm between 4 to 15 minutes

CO alarm Silence: About 5 minutes

Product Life: 10 years from the date of manufacture

Operation Ambient Condition: 40 °F (4.4 °C)~100°F (37.8 °C), 25% to 95%RH non-condensing

Alarm Mode: Sound and light alarm

Audible Alarm: ≥ 85 dB (A) at 10 feet (3.05m)

Low Battery Warning Silence: About 10 hours

Installation Location: Wall outlet

Detection Range: Max. 430 ft. (40 m²) within a room

Size: About 4.72*2.76*1.65 inches (120*70*42 mm)

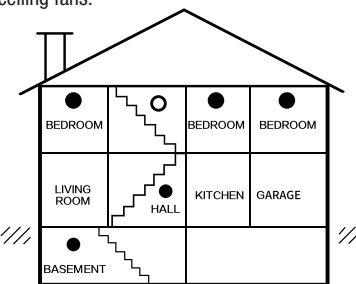
NOTE: This CO alarm is designed to detect carbon monoxide gas from any source of combustion. It is not designed to detect any other gas.

4. Where to Install Carbon Monoxide Alarms

Recommended Location For Alarms

The following suggestions are intended to help you with the placement and installation of your CO alarm.

1. Place the alarm out of the reach of children. Children should never handle the CO alarm.
2. Install the alarm in a bedroom or hallway near the sleeping area. Ensure the alarm can be heard clearly in sleeping areas.
3. It is recommended to install a CO alarm on each level of a multi-level home.
4. Do not install the alarm within 5 feet of heating or cooking appliances. (It is recommended to maintain a distance of 15 feet to prevent nuisance alarms.)
5. Installing the alarm at eye level allows for optimal monitoring of the red and green indicator lights.
6. Ensure that all vents of the CO alarm are unobstructed.
7. Do not install the alarm in dead air spaces, such as the peaks of vaulted ceilings or gabled roofs.
8. Do not install the alarm in turbulent air near ceiling fans.
9. Do not place the alarm near fresh air vents, doors, or windows that open to the outside.
10. Keep the CO alarm away from excessively dusty, greasy, or dirty areas. Dust, grease, and household chemicals can affect the sensor.
11. Keep the alarm out of damp and humid areas, such as the bathroom. Avoid spraying aerosols near the alarm.
12. Do not install the alarm in areas where the temperature is below 40°F (4.4°C) or above 100°F (37.8°C).
13. Do not place the alarm behind curtains or furniture. The CO must reach the sensor for the alarm to accurately detect it.
14. Do not place the alarm near metal objects.



- REQUIRED TO MEET NFPA RECOMMENDATIONS
- SUGGESTED AREAS FOR INSTALLING ADDITIONAL CO ALARMS

5. Installation Instructions

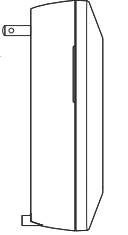
▲ WARNING! This CO alarm should be located in an open and unobstructed area and shall not be located behind furniture, drapes, or any other object where it might not be seen or heard. The alarm shall be heard from all sleeping areas.

▲ WARNING! Alarm users should add the phone numbers of their emergency service providers and qualified technicians on the two self-adhesive labels provided by the alarm manufacturer. Users should place one label next to the CO alarm and another near the source of fresh air they plan to gather. When the alarm indicates the presence of carbon monoxide, the user can escape as planned.



When choosing the installation location, ensure the alarm can be heard from all sleeping areas. If you install only one device in your home, install the CO alarm near bedrooms, not in the basement or furnace room.

1. Insert the battery into the battery compartment, ensuring correct orientation, and securely attach the battery cover.
2. Press TEST/SILENCE button three times consecutively to test the alarm. Confirm that the alarm sounds in the designated alarm pattern.
3. Select a standard, non-switched 120V AC wall outlet for installation.
4. Rotate the plug on the CO alarm 90 degrees outward, then plug it into the outlet.
5. Verify that the green light remains on, indicating the device is powered and operational.



6. Power Information and Battery Installation and Replacement

Battery Information

This alarm is powered by 120V AC and 3V DC (1pcs CR123A replaceable battery). Under AC power is connected, a fresh battery should last at least 10 years.

NOTE: Constant exposures to high or low temperatures or high humidity may reduce battery life.

NOTE: A missing or improperly installed battery will prevent the battery door from closing and result in improper alarm operation.

NOTE: Battery installation or replacement is essential for the proper functioning of the CO alarm.

Battery Replacement

This alarm is equipped with a low battery monitoring circuit. When the battery capacity is low and unable to provide sufficient power for all alarm functions, a low battery condition will be indicated. See the Troubleshooting Guide.

The battery must be replaced immediately upon the first occurrence of the "Low Battery Warning" to ensure continuous alarm protection. To install or replace the battery in the CO alarm, please perform the following steps:

1. Unplug the CO alarm from the wall outlet.
2. Open the battery compartment.
3. Remove the old batteries and insert a new set, ensuring correct orientation.
4. Close the battery compartment securely.
5. Press TEST/SILENCE button three times consecutively to test the alarm. If it sounds correctly, the device is functioning normally.
6. Plug the CO alarm back into the wall outlet and confirm it is operating in 'normal mode'.

▲ WARNING! Use only the specified battery. Use of different battery may have a detrimental effect on the alarm.

▲ WARNING! The AC power can be dangerous. When replacing the battery, remove the alarm from the wall outlet.

▲ CAUTION! This device requires a continuous supply of electrical power from a healthy battery and/or AC connection, depending on the model. It will not work without power.

▲ CAUTION! Please replace with a new battery of the same type.

▲ CAUTION! Test the alarm for correct operation whenever the battery is replaced.

NOTE: A missing or improperly installed battery will prevent the battery door from closing and result in improper alarm operation. These batteries can be purchased at your local retailer.

Battery Disposal

▲ WARNING! Fire, explosion and severe burn hazard. Do not recharge, crush, disassemble, heat above 100°C, incinerate, or expose contents to water.

1. Do not dispose of the battery or the device with regular household waste.
2. Dispose of the battery and device in accordance with all applicable federal, state, and local regulations.

7. Alarm Operation and Testing

Start-up

After connecting the battery and AC power supply, three color indicators (red, yellow, green) will flash once in turn, and the CO alarm will confirm start-up with a beep. After powering on, the green indicator will begin to pulse after 60 seconds, indicating the preheated state.

Fault warning

When the CO alarm power by battery only, if the CO alarm chirps twice every 40 seconds and the fault indicator (yellow) flashes twice at the same time, It indicates the CO alarm is in a malfunctioning condition.

When the alarm power by AC supply and battery, if the CO alarm chirps twice every 40 seconds, the fault indicator (yellow) breathe twice every 40 seconds, the indicator(green) will be always on. It indicates the CO alarm is in a malfunctioning condition.

⚠ CAUTION! When Fault warning occurs, replace the CO alarm immediately. Please contact customer service for assistance.

Fault warning silence

When the CO alarm is under a fault warning, pressing the TEST/SILENCE button will activate a fault warning silence status for about 10 hours. The fault indicator (yellow) flashes or pulses twice every 40 seconds.

Low battery warning

When the CO alarm powered by battery only, if the CO alarm chirps once every 40 seconds, the fault indicator (yellow) flashes once at the same time . It means the battery is low.

When the CO alarm powered by AC supply and battery, if the CO alarm chirps once every 40 seconds, the fault indicator (yellow) breathe once every 40 seconds, the indicator(green) will be always on . It means the battery is low.

NOTE: When the low battery warning is activated, the CO alarm will still be able to produce a CO alarm signal for at least 12 hours, and it will continue to provide a low battery warning signal for up to 7 days.

NOTE: You need to replace the battery as soon as possible when the CO alarm enters this status.

NOTE: This CO alarm will not protect against the risk of carbon monoxide poisoning when the battery has drained and AC power is disconnected.

Low battery warning silence

When the CO alarm is under the low battery warning, pressing the TEST/SILENCE button will enter a low battery warning silence mode for about 10 hours. The fault indicator (yellow) flashes once every 40 seconds, or pulses once every 40 seconds.

NOTE: The low battery warning cannot be silenced when the battery voltage is critically low.

NOTE: The low battery warning silence feature is a temporary action to mute the warning sound. You should replace the battery as soon as possible.

CO alarm

When the device meets the alarm conditions required by the standard, it will emit a loud alarm pattern. The alarm signal pattern is 4 short beeps followed by 5 seconds of silence. This cycle repeats as long as a dangerous CO condition exists. The ALARM indicator (red) will flash the same pattern, or will be on with breathing pattern when powered by AC supply and battery.

CO alarm sensitivity setting (conforms to UL 2034):

30ppm without alarm in 30 days
70ppm between 60 to 240 minutes
150ppm between 10 to 50 minutes
400ppm between 4 to 15 minutes

⚠ ATTENTION! Refer to section 1: “Carbon Monoxide Alarm: Steps To Take When The Alarm Sounds”

⚠ DANGER! If the CO alarm sounds and cannot be silenced, it means the CO alarm is sensing a dangerous level of CO. The alarm sound requires your immediate attention and action.

CO Alarm Silence

When the device is in CO alarm mode, pressing the TEST/SILENCE button will pause the alarm sound for about 5 minutes. The alarm indicator (red) will continue flashing or breathing in CO alarm silence mode, indicating the device is in CO alarm silence mode.

⚠ DANGER! Before enabling the CO alarm warning silence feature, ensure that the alarm is triggered by dangerous levels of carbon monoxide and that the dwelling is ventilated.

Test the CO alarm

To test the CO alarm, press the TEST/SILENCE button three times consecutively. You should hear alarm sound patterns, and the corresponding ALARM indicator (red) will flash or pulse. The test alarm sound pattern includes 4 short beeps, a 5-second pause, and will continue until the TEST/SILENCE button is released.

NOTE: After the TEST/SILENCE button is pressed, the alarm will sound, and the red alarm light will flash or pulse. This does not indicate the presence of CO.

NOTE: Test the CO alarm weekly! If your CO alarm does not perform as described, replace it immediately.

⚠ WARNING! Due to the alarm’s loudness (85 decibels), always stand at arm’s length from the unit when testing.

Alarm memory warning

7-day alarm memory function: When the device detects CO and triggers an alarm, the ALARM indicator (red) will flash or pulse once every 40 seconds after the alarm is cleared. After pressing the TEST/SILENCE button, concentration for 5 seconds, and the product will clear the alarm memory warning. Or after 7 days, the CO alarm will automatically clear the alarm memory prompt.

NOTE: Press and hold the TEST/SILENCE button to clear the memorized warning and press TEST/SILENCE button three times consecutively to test the alarm.

End-of-life warning

After 10 years of continuous operation, the CO alarm will chirp 3 times every 40 seconds, and the fault indicator (yellow) will flash or pulse 3 times. This indicates that the CO alarm is in end-of-life mode, meaning it no longer detects or responds to CO.

NOTE: Replace the CO alarm as soon as possible when the CO alarm enters this status.

NOTE: The replacement date that appears on the CO alarm is the date beyond which the CO alarm might no longer detect carbon monoxide accurately and should be immediately replaced.

End-of-life reset

When the CO alarm enters the end-of-life warning state within the first 30 days, press the button to reset the end-of-life warning. At this point, if the CO alarm is still functional, it will enter normal standby mode for 24 hours. After 24 hours, the CO alarm will revert to the end-of-life warning state. After 30 days from the first end-of-life warning state, the CO alarm can no longer be reset and needs to be replaced in a timely manner.

8. Troubleshooting

⚠ CAUTION! Do not attempt to repair the CO alarm. Doing so will void your warranty. If the CO alarm is not operating properly and is still under warranty, return it to the place of purchase. Pack it in a well-padded carton, and ship it to the place of purchase. If the CO alarm is no longer under warranty, have a qualified technician replace it immediately with a comparable model.

Problem	Method of Disposal
The CO alarm does not sound when the TEST/SILENCE button is pressed.	<ol style="list-style-type: none">Ensure the CO alarm is powered off. Replace the battery and confirm that the CO alarm functions normally after the replacement.The CO alarm is in 'Fault warning' mode. Please ensure the CO alarm is in 'Normal operation' mode before testing it.Clean the CO alarm. Please refer to section '12. Maintenance Information'.If the CO alarm still malfunctions during the warranty period, you can return it to your retailer.If the CO alarm is out of warranty, please replace it with a new one.
The CO alarm chirps once with FAULT indicator (yellow) flashing once every 40 seconds.	Low Battery Voltage Signal <ol style="list-style-type: none">The battery is low; please replace it.A backup battery may not be installed during AC power supply. Please check if the battery is properly installed.
The CO alarm chirps twice with FAULT indicator (yellow) flashing twice every 40 seconds.	Malfunction Signal Clean the CO alarm. Please refer to section '12. Maintenance Information'. <ol style="list-style-type: none">If the CO alarm is still under warranty, return it to your retailer for replacement.If the CO alarm is out of warranty, replace it with a new CO alarm.
The CO alarm chirps three times with FAULT indicator (yellow) flashes three times every 40 seconds.	End-of-Life Signal Replace the alarm.
The CO alarm sounds unwanted alarms when residents are cooking, taking showers, etc.	During normal activities like cooking or showering, the alarm may sound due to increased humidity or other household fumes. To reduce unwanted CO alarms open a window or increase ventilation in the area.

9. Carbon Monoxide (CO) Overview

Carbon monoxide (CO) is a colorless, odorless, and tasteless poisonous gas that can be fatal when inhaled. CO inhibits the blood’s ability to carry oxygen.

Possible Sources of CO

Inside your home, appliances used for heating and cooking are the most likely sources of CO. Vehicles and other combustion engines running in an attached garage and using a charcoal/gas grill or hibachii in an enclosed area are all possible sources of CO. Generators running in enclosed areas, such as garages or living spaces, will create CO. CO can be produced when burning any fossil fuel: gasoline, diesel, propane, natural gas, oil and wood. It can be produced by any fuel-burning appliance that is malfunctioning, improperly installed, or not ventilated correctly, such as: Furnaces/boilers, gas ranges, stoves, gas clothes dryers, water heaters, portable fuel burning space heaters, fireplaces, wood-burning stoves and certain swimming pool heaters. Blocked chimneys or flues, back drafting and changes in air pressure, corroded or disconnected vent pipes, or a loose or cracked furnace heat exchanger can also release CO into your building.

The Following Conditions Can Result In Transient CO Situations

- Excessive spillage or reverse venting of fuel-burning appliances may be caused by:
 - Outdoor ambient conditions such as wind direction and/or velocity, including high gusts of wind; heavy air in the vent pipes (cold/humid air with extended periods between cycles).
 - Negative pressure differential resulting from the use of exhaust fans.
 - Simultaneous operation of several fuel-burning appliances competing for limited internal air.
 - Vent pipe connection vibrating loose from clothes dryers, furnaces, or water heaters.
 - Obstructions in or unconventional vent pipe designs which amplify the above situations.
 - Poorly designed or maintained chimneys and/or vents.
- Extended operation of unvented fuel-burning devices (such as ranges, ovens, or fireplaces).
- Temperature inversions that can trap exhaust gases near the ground.
- Car idling in an open or closed attached garage, or near a home.

Symptoms of CO Poisoning

Initial carbon monoxide poisoning symptoms are similar to the flu with no fever and can include dizziness, severe headaches, nausea, vomiting and disorientation. Everyone is susceptible but experts agree that unborn babies, pregnant women, senior citizens and people with heart or respiratory problems are especially vulnerable. If symptoms of carbon monoxide poisoning are experienced seek medical attention immediately. CO poisoning can be determined by a carboxyhemoglobin test.

The following symptoms are related to CARBON MONOXIDE POISONING and should be discussed with ALL members of the household:

- MILD EXPOSURE:** Slight headache, nausea, vomiting, fatigue (often described as ‘Flu-like’ symptoms).
- MEDIUM EXPOSURE:** Severe throbbing headache, drowsiness, confusion, rapid heart rate.
- EXTREME EXPOSURE:** Unconsciousness, convulsions, cardiorespiratory failure, and death.

The above levels of exposure relate to healthy adults. Levels may vary for those at high risk. Many cases of reported carbon monoxide poisoning indicate that while victims are aware they are not feeling well, they become so disoriented they are unable to save themselves by either exiting the building or calling for assistance. Additionally, young children and household pets may be the first to be affected.

⚠ WARNING! Exposure to high levels of carbon monoxide can be fatal or cause permanent damage or disabilities.

⚠ WARNING! This device may not prevent chronic effects of carbon monoxide exposure or fully safeguard individuals at special risk.

10. Good Safety Habits: CO Safety Tips

Each year, have a qualified technician inspect and clean your heating system, vents, chimney, and flue to ensure proper function and safety. Always install appliances according to manufacturer’s instructions and adhere to local building codes. Most appliances should be installed by professionals and inspected after installation.

Regularly examine vents and chimneys for improper connections, visible rust, or stains, and check for cracks in furnace heat exchangers. Verify that the color of flame is blue on pilot lights and burners. An amber or orange flame is a sign that the fuel is not burning completely and may be releasing CO. Teach all household members what the alarm sounds like and how to respond. Fire Departments, most utility companies and HVAC contractors will perform CO inspections. Some contractors may charge for this service. It's advisable to inquire about any applicable fees prior to having the service performed. Feit Electric will not pay for, or reimburse the owner or user of this product, for any repair or dispatch calls related to the alarm sounding.

11. How to Identify Nuisance Alarms

Carbon Monoxide (CO) Nuisance

RESET: Pressing the TEST/SILENCE button during CO alarm allows the CO alarm to reset calculations and double check for the presence of CO. If the CO alarm re-alarms within 6 minutes, it is sensing high levels of CO which can quickly become a dangerous situation. Exit to fresh air and call 911.

⚠ WARNING! It is impossible to determine the source of a CO alarm using sight or smell. Always consider a CO alarm event as dangerous.

NOTE: To reduce the likelihood of nuisance tripping of the device's alarm circuit, the accommodation spaces should be well ventilated when household cleaning supplies or similar contaminants are used.

12. Maintenance Information

To keep your CO alarm in good working order, please follow these simple steps:

- Verify the device’s alarm sound and indicator operation by pressing three times of the TEST/SILENCE button once a week.
- Remove the CO alarm from the wall and clean the alarm cover and vents with a soft brush attachment once a month to remove dust and dirt.
- Never use detergents or other solvents to clean the CO alarm.
- Avoid spraying air fresheners, hair spray, or other aerosols near the CO alarm.

- Do not paint the CO alarm. Paint will seal the vents and interfere with the sensor's ability to detect CO. Never attempt to disassemble the CO alarm or clean its interior. Such actions will void your warranty.
- As soon as possible, place the CO alarm back in its proper location to ensure continuous protection from carbon monoxide poisoning.
- When household cleaning supplies or similar contaminants are used, the area should be ventilated.

⚠ WARNING! The following substances can affect the sensor and may cause false alarms: methane, propane, isobutene, isopropanol, ethylene, benzene, toluene, ethyl acetate, hydrogen sulfide, sulfur dioxides, alcohol-based products, paints, thinner, solvents, adhesives, hair sprays, aftershaves, perfumes, and some cleaning agents.

⚠ WARNING! Your CO alarm will not function or monitor CO levels without a working battery or AC power supply.

⚠ WARNING! This device is designed to protect against the immediate effects of carbon monoxide exposure. However, it may not prevent long-term effects of exposure and will not fully protect individuals who are at higher risk or have specific medical conditions. If you are unsure about symptoms of CO poisoning, consult a medical professional.

13. Warranty Information

TEN-YEAR LIMITED WARRANTY

This product is warranted to be free from defects in material and workmanship for a period of 10 (ten) years from the date of purchase. For products containing a sealed battery, this warranty does not cover any damage that may be caused by the battery. Warranty does not apply to replaceable batteries. This warranty applies only to the original consumer purchaser and only to products used in normal residential use and service. If this product is found to be defective, the only obligation, and your exclusive remedy is the repair or replacement of the product, at the company’s discretion, provided that the product has not been damaged through misuse, abuse, accident, modification, alteration, neglect, or mishandling. This Warranty shall not apply to any product which is found to have been improperly installed, setup, or used in any way not in accordance with the instructions supplied with this product.

ALARM RETURNS

For replacement of this alarm under the terms of this Warranty, please contact customer service at **feit.com/help** for assistance. The company does not warrant, and specifically disclaims any warranty, whether express or implied, of fitness for a particular purpose, other than the warranty contained herein. No implied warranty on this product, created by state law, shall extend beyond the term of this warranty unless such law otherwise provides. The company specifically disclaims any liability and shall not be liable for any consequential or incidental loss or damage, including, but not limited to, damages to any equipment with which this product is used. Some states do not allow the exclusion or limitation of incidental or consequential damages, so the above limitations or exclusions may not apply to you. No agent, representative, dealer, or employee of the company has the authority to increase or alter the obligations or terms of this Warranty. This Warranty gives you specific legal rights and you may also have other rights which vary from state to state. This Warranty is only valid for merchandise purchased from outlets in the United States and Canada. This warranty expires upon product end-of-service life signal.