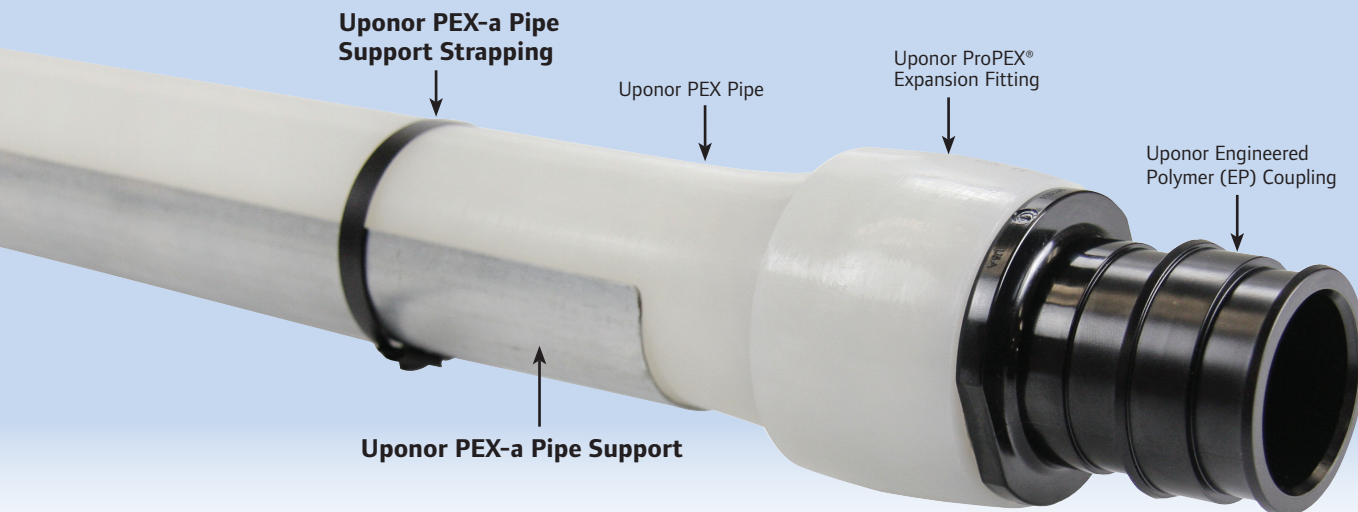




PLUMBING AND HYDRONIC  
PIPING SYSTEMS

PEX-A PIPE SUPPORT

INSTRUCTION SHEET



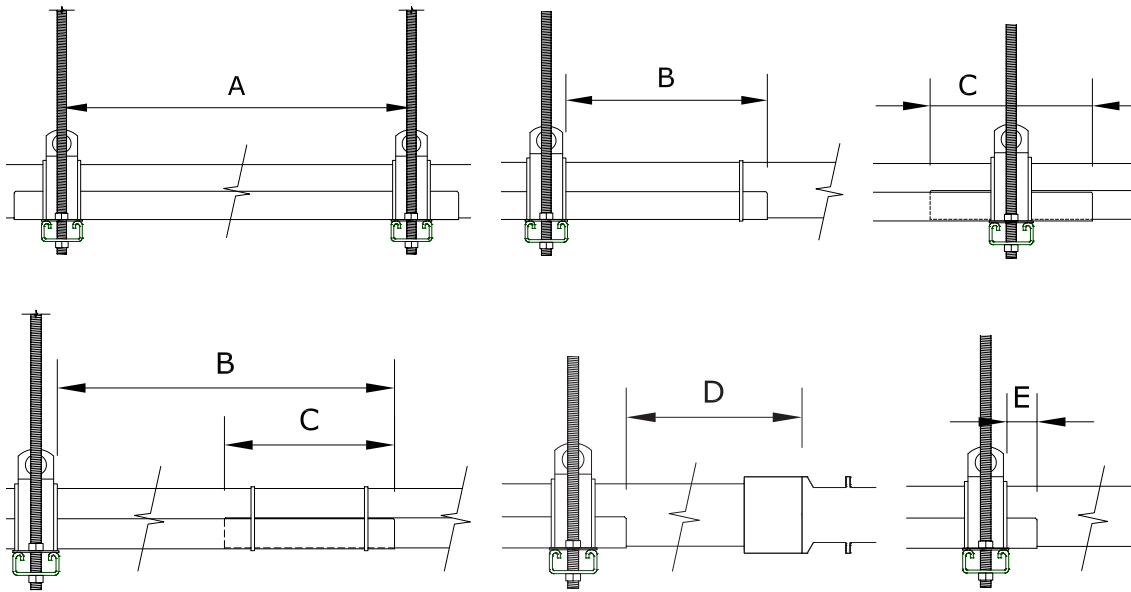
## PEX-a Pipe Support Instruction Sheet

Uponor PEX-a Pipe Support provides continuous support of Uponor crosslinked polyethylene (PEX) pipe for commercial plumbing and hydronic piping applications. PEX-a Pipe Support ships in a package quantity of five 9-ft. pieces and includes 15 pieces of nylon-coated, stainless-steel PEX-a Pipe Support Strapping. Refer to the following guidelines for installation instructions.

### Important Tips

- Always follow local code for general piping support requirements.
- In plenum applications, there are no spacing or insulation requirements between adjacent runs of Uponor PEX pipe supported with Uponor PEX-a Pipe Support (1/2" to 3" only).
- Recommend using 20-ft. straight lengths with PEX-a Pipe Support. If using coils, uncoil and allow pipe adequate time to relax and become straight.
- When using a reciprocating or bandsaw to cut the PEX-a Pipe Support, either place the support flat side down to make a clean cut or place a scrap piece of pipe into the support before cutting.
- When using a hand tool, such as tin snips, to cut the PEX-a Pipe Support, place the support flat side down and mark a line on the support to follow.
- When cutting, take care not to bend the support.
- After cutting PEX-a Pipe Support, taper and smooth out any sharp edges.
- When using PEX-a Pipe Support to control thermal expansion, a minimum 60-lb., tensile-rated strap that is nylon-coated stainless steel or equivalent and is suitable for the application is required for all strapping. (PEX-a Pipe Support Strapping exceeds these requirements.)
- Due to the roller-ball design of PEX-a Pipe Support Strapping, the strap may be loose. The intent is to keep the pipe support on the pipe, not stop the assembly from sliding.

## PEX-a Pipe Support Installation



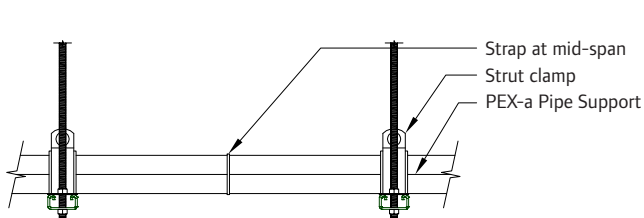
| Normal Pipe Size | Maximum Support Spacing (A) | Maximum Cantilever (B) | Minimum Overlap (C) | Minimum Distance to Fitting (D) | Minimum Overhang (E) |
|------------------|-----------------------------|------------------------|---------------------|---------------------------------|----------------------|
| 1/2"             | 6'-0"                       | 18"                    | 6"                  | 1 1/4"                          | 1"                   |
| 3/4"             |                             |                        |                     | 1 3/4"                          |                      |
| 1"               | 8'-0"                       |                        |                     | 2 1/4"                          |                      |
| 1 1/4"           |                             |                        |                     | 2 3/4"                          |                      |
| 1 1/2"           |                             |                        |                     | 3"                              |                      |
| 2"               |                             |                        |                     | 4"                              |                      |
| 2 1/2"*          |                             |                        |                     | 2 1/2"                          |                      |
| 3"*              |                             |                        |                     | 3"                              |                      |
| 3 1/2"*          |                             |                        |                     | 3"                              |                      |

\*WIPEX™ fitting solution

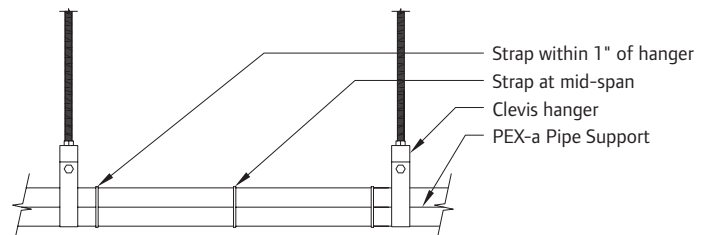
**Table 1: PEX-a Pipe Support Guidelines**

## Strapping Requirements

Minimum 60-lb., tensile-rated, stainless-steel cable ties are required for all strapping. See **Figures 1 and 2**.



**Figure 1: Strut-type Clamps**



**Figure 2: Clevis-type Hangers**

## Using PEX-a Pipe Support for Expansion and Contraction Control

When properly installed, Uponor PEX-a Pipe Support can reduce linear expansion and contraction by as much as 93% when compared to bare PEX pipe.

This requires:

- Minimum 60-lb., tensile-rated, stainless-steel strapping (included)

- Anchor points installed every 65 ft. for domestic hot water, heating hot water and chilled water applications ( $\Delta T > 40^\circ\text{F}$ ) and every 150 ft. for domestic cold water applications ( $\Delta T > 40^\circ\text{F}$ )

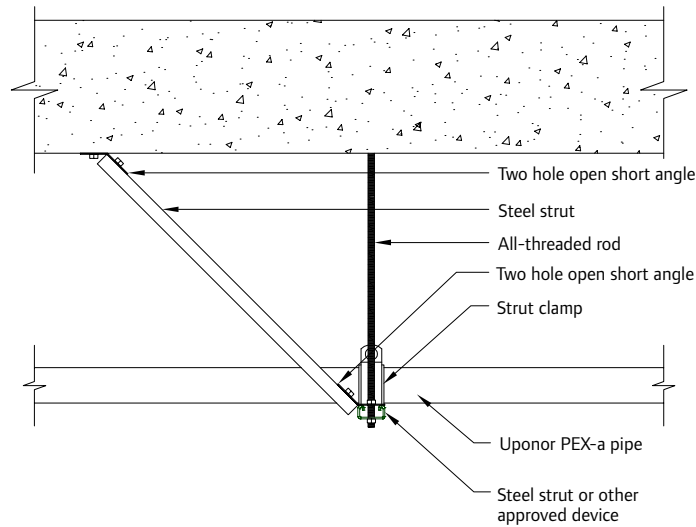


Figure 3: Anchor Point

## PEX-a Pipe Support in ASTM E84 Applications

Uponor PEX-a Pipe Support has been tested and approved for use in ASTM E84 applications. To meet the requirements, PEX-a Pipe Support must be installed per the following guidelines:

- PEX-a Pipe Support sections shall be no less than 48" in length
- Maximum exposure of bare PEX and/or ProPEX fittings is 18"

**Note:** When installed per these requirements, no 25/50 listed insulation is required. The requirements also apply to PEX-a Pipe Support installed in a vertical position.

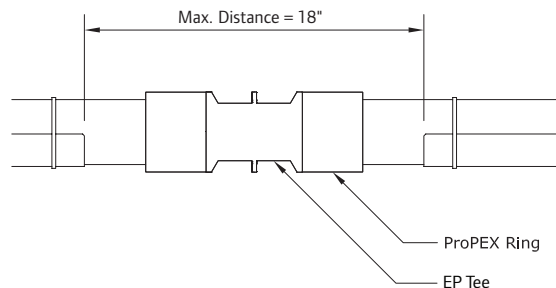


Figure 4: Maximum Exposure in ASTM E84 Applications



### Uponor PEX-a Pipe Support Product Offering

| Part No. | Description   |
|----------|---|
| F7040500 | 1/2" PEX-a Pipe Support, 9-ft. length                     |
| F7040750 | 3/4" PEX-a Pipe Support, 9-ft. length                     |
| F7041000 | 1" PEX-a Pipe Support, 9-ft. length                       |
| F7041250 | 1 1/4" PEX-a Pipe Support, 9-ft. length                   |
| F7041500 | 1 1/2" PEX-a Pipe Support, 9-ft. length                   |
| F7042000 | 2" PEX-a Pipe Support, 9-ft. length                       |
| F7042500 | 2 1/2" PEX-a Pipe Support, 9-ft. length                   |
| F7043000 | 3" PEX-a Pipe Support, 9-ft. length                       |
| F7043500 | 3 1/2" PEX-a Pipe Support, 9-ft. length                   |
| Q7410510 | PEX-a Pipe Support Strapping (1/2", 3/4", 1" PEX)         |
| Q7411220 | PEX-a Pipe Support Strapping (1 1/4", 1 1/2", 2" PEX)     |
| Q7412540 | PEX-a Pipe Support Strapping (2 1/2", 3", 3 1/2", 4" PEX) |

**Uponor, Inc.**  
 5925 148th Street West  
 Apple Valley, MN 55124 USA  
 Tel: 800.321.4739  
 Fax: 952.891.2008

**Uponor Ltd.**  
 2000 Argentia Rd., Plaza 1, Ste. 200  
 Mississauga, ON L5N 1W1 CANADA  
 Tel: 888.994.7726  
 Fax: 800.638.9517

**Uponor**

[www.uponorpro.com](http://www.uponorpro.com)