

# SONANCE

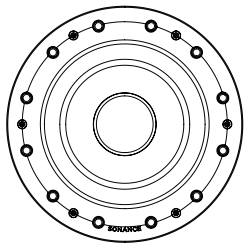
## VISUAL EXPERIENCE EXTREME DATA SHEET

### VXXT10RW SUBWOOFER

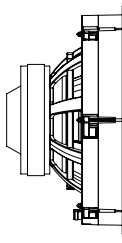
#### TECHNICAL SPECIFICATIONS

SKU	<b>VXXT10RW</b> 93737 - Each
Woofer	10" (254mm) polypropylene cone, high excursion Santoprene surround
Frequency Response	30Hz - 250kHz +/-3dB
Impedance	4 ohms nominal
Power Handling (RMS)	5 watts minimum; 300 watts maximum
Sensitivity (2.83V/1m)	90dB SPL
IP Rating	IP67
Temperature Range	-40°F to 194°F (-40°C to 90°C)
Round Micro Trim Grille (Dia)	13.78" (350.1mm)
Round Trimless Grille (Dia)	13.45" (341.6mm)
Square Micro Trim Grille (WxH)	13.8" x 13.8" (350.6mm x 350.6mm)
Square Trimless Grille (WxH)	13.45" x 13.45" (341.6mm x 341.6mm)
Speaker Only (Dia x Depth)	13.31" x 6.86" (232.8mm x 174.3mm)
Speaker Mounting Depth (D)	6.75" (171.4mm)
Cut-Out Dims (Dia)	12.40" (315mm)
Product Weight	19.29 lbs. (8.75kg) Each
Shipping Weight	24.25 lbs. (11kg) Each

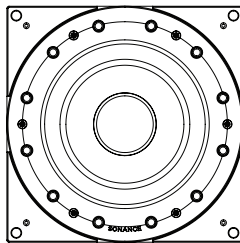
#### DIMENSIONAL DRAWINGS



**Front View**  
Cut-Out  
Diameter



**Side View**  
Mounting Depth



**Front View**  
Square Adaptor

#### VXXT10RW ACCESSORIES

**XPC-10WR-NT | 93749**  
10" Woofer Round XPC Trimless Grille | Each

**XPC-10WR-T | 93748**  
10" Woofer Round XPC Micro Trim Grille | Each

**XPC-10WSQ-NT | 93757**  
10" Woofer Square XPC Trimless Grille | Each

**XPC-10WSQ-T | 93756**  
10" Woofer Square XPC Micro Trim Grille | Each

#### LIMITED FIVE (5) YEAR WARRANTY

Sonance warrants to the first end-user purchaser that this Sonance-brand product ("Product"), when purchased from an authorized Sonance Dealer/Distributor, will be free from defective workmanship and materials for five (5) years. Sonance will at its option and expense either repair the defect or replace the Product with a new or remanufactured Product or a reasonable equivalent. ©2025 Sonance. All rights reserved. Sonance is a registered trademarks of Dana Innovations. Due to continuous product improvement, all features and specifications are subject to change without notice. For the latest Sonance product specification information visit our website at [www.sonance.com](http://www.sonance.com).

991 Calle Amanecer • San Clemente, CA 92673 USA • Phone: (949) 492-7777

05.08.2025