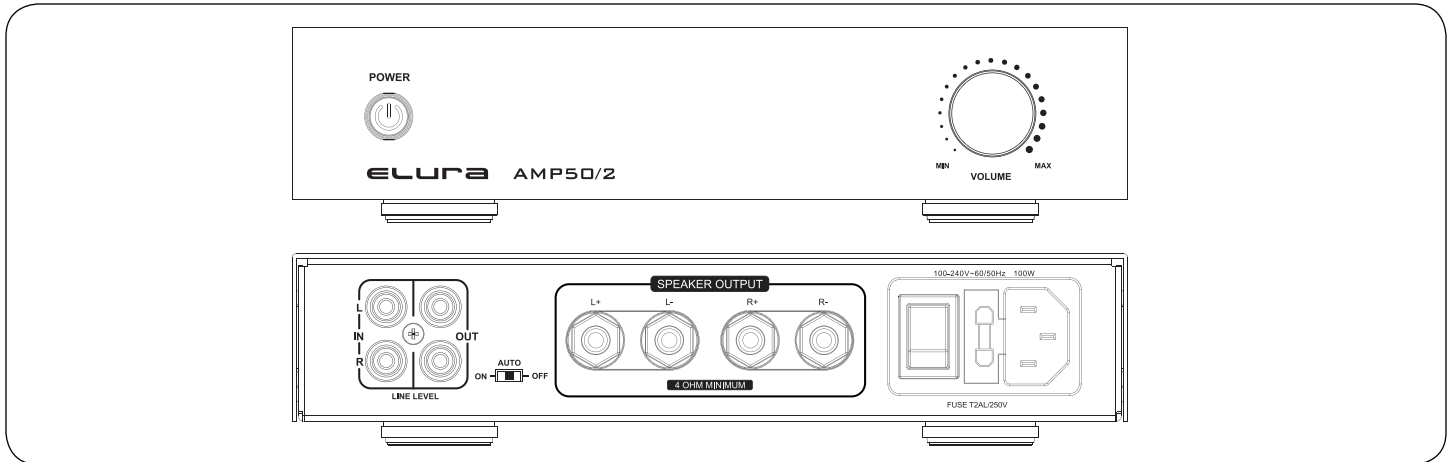


ELURA

model # AMP 50/2
high performance amplifier



Overview.

Thank you for purchasing Elura Amplifier products. Elura is a high performance custom installed product engineered for movie and music enthusiasts. Each Elura product is manufactured to the highest quality standard using state of the art components and built for years of enjoyment.

Features.

- Digital high power amplification
- Low noise
- Small chassis
- Less heat
- Efficient design
- Rack mountable

Contents.

- Amplifier
- Power cord
- 2x Rack Ears
- 4x 10-32 Rack Screws
- Manual



Warning.

To reduce the risk of electric shock, do not expose this product to rain or moisture. This product should not be exposed to dripping or splashing and avoid placing near any object filled with water, such as a vase or an aquarium.

Important Symbols.

The lighting flash arrowhead triangular symbol is to alert the user to the presence of uninsulated 'dangerous voltage' within the product sufficient enough to constitute a risk of electric shock.

The arrowhead symbol with an exclamation point is to alert the user to the presence of an important operational or maintenance instruction.

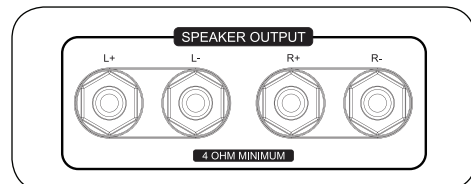
Safety Instructions.

1. Read the instructions.
2. Keep the instructions.
3. Heed all warnings.
4. Follow the instructions.
5. Do not use near water.
6. Clean with a dry cloth.
7. Do not block ventilation slots.
8. Install in accordance to the instructions.
9. Do not install near a heat source or combustible source.
10. Do not defeat the polarized or grounding plug.
11. Protect the power cord from being crimped, cut or pinched.
12. Only attached accessories specified within the instructions.
13. Use only on lower shelves with a stand, cart or rack product capable of holding the weight to avoid injury from furniture tipping over.

ELURA

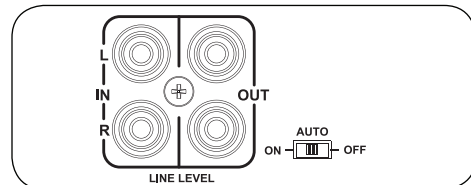
model # AMP 50/2
high performance amplifier

Speaker Connections.



The AMP 50/2 has 5-way binding posts to make connecting your speaker wire easy and secure. The connector can be used to screw down onto bare wire, or banana jacks, spade connectors or pins. Position and polarity are color coded and marked to avoid phase issues. Be sure to follow and maintain proper polarity and position.

Preamp Connections.

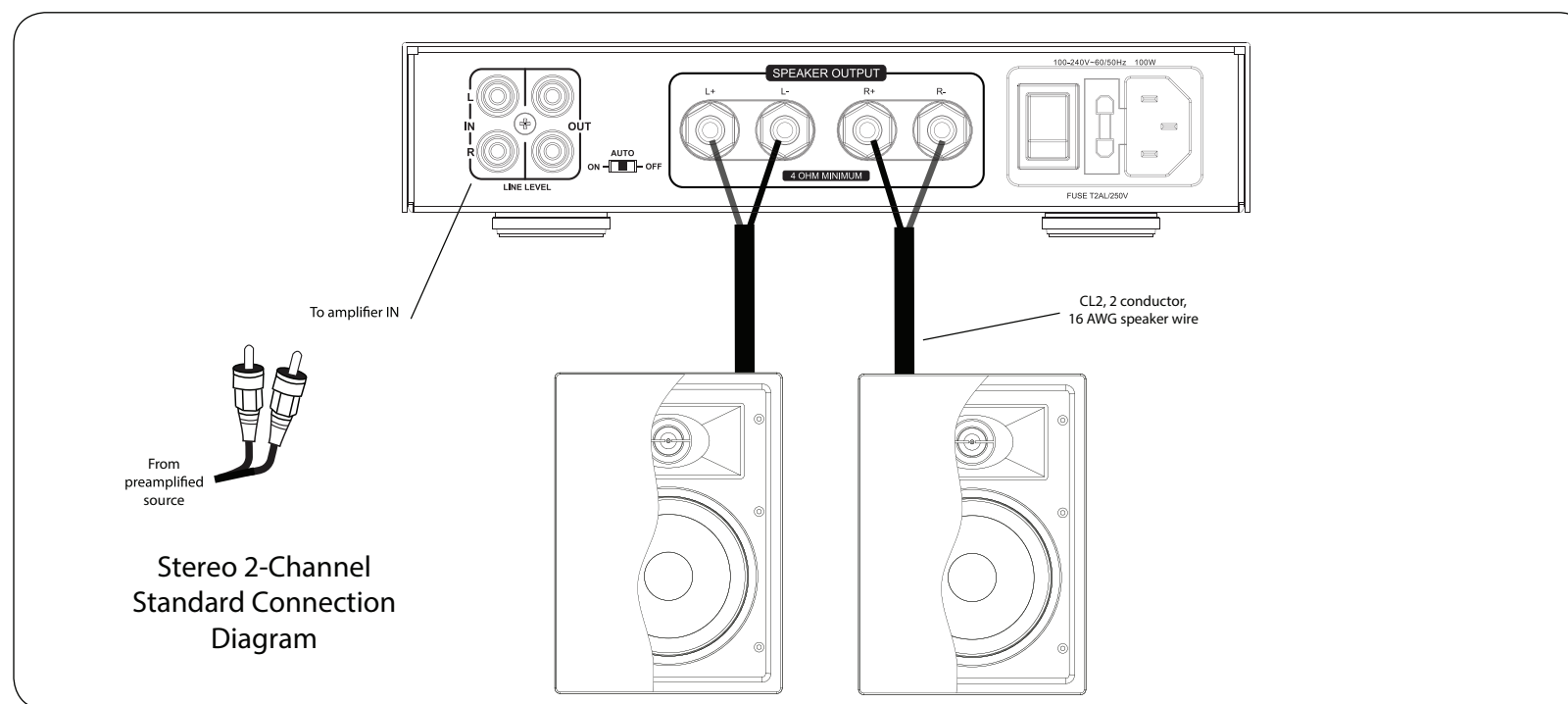


Preamplified connections are made using Stereo RCA patch cables. The AMP 50/2 provides a convenient IN and OUT loop. Use the output to connect to another amp or other device sharing the pre-amp source signal.

Auto Power Modes.

The AMP 50/2 has three power modes, OFF/AUTO/ON.

ON = Always ON*
AUTO = Signal sensing via audio
OFF = Always OFF

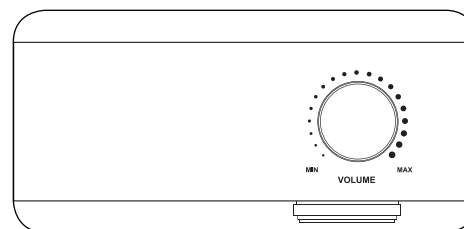


Stereo 2-Channel
Standard Connection
Diagram

Amplifiers produce light noise when left on. The noise is a light hiss and is heard when music isn't playing in a very quiet room. If you are using a master switch to turn off power to your audio equipment, always on is acceptable. In a louder or light commercial environment, always ON may be acceptable. In quiet rooms, it is suggested to use the AUTO option.

NOTE: When the OFF/AUTO/ON switch is set to the AUTO mode, the front panel power LED toggle function is disabled.

*Unit can be toggled between ON-OFF using the front panel Power Button.



Amp Volume Settings.

The volume for the amplifier on the front panel offers control of the speaker output for Left / Right.



Front Panel LEDs.

The Elura amplifier has an LED on the front panel to indicate the amplifier's power state. The Power LED indicates the amplifier is ON or in standby. Tap the button to toggle between standby and ON.

Power ON = Blue
Power Standby = Red

Specifications.

Output Power: 60W x 2 @ 4Ω 1kHz
35W x 2 @ 8Ω 1kHz

THD+N: @4/8Ω=1.0%

Input Sensitivity: 430mV

Frequency Response: 41Hz - 22kHz

High Pass Filter: -3dB @ 41Hz

Signal to Noise Ratio: -90dB

Auto Turn ON: 5mV

Turn OFF Delay: 15min

Supply Voltage: AC230V / 50Hz
AC110V / 60Hz

Line Level Inputs/Pass Through Outputs: Stereo RCA

Protection: Shorted Output
High Temperature

Current Draw @ rated power:
2.4 Amps

Certification: TuV Safety Rated

Dimensions:
216mm (8.5") W
44.5mm (1.75") H
50mm (2") H (including feet)
218mm (8.6") D (including volume knob & speaker connectors)

Unit Weight:
1.4kg (3.1lb)

Rack Mount Option:
Standard 19" 1U using supplied rack ears.

Dual Rack Mount Option:
The Elura AMP50/2-RACK-KIT allows strapping two Elura AMP50/2 units together for standard 19" wide single rack space (1U) mounting.

Warranty.

All Elura products come with a 2 year limited liability warranty. This warranty includes parts and labor repairs on all components found to be defective in material or workmanship under normal conditions of use. This warranty shall not apply to products which have been abused, modified or disassembled. Warranty items only by authorized resellers. Warranty not eligible for products purchased through non-authorized online sellers.

A product that fails under conditions other than those covered will be repaired at the current price of parts and labor in effect at the time of repair. Such repairs are warranted for 90 days from the day of reshipment to the BUYER. If the unit is delivered by mail, customers agree to insure the unit or assume the risk of loss or damage in transit. Under no circumstances will a unit be accepted without a return authorization number. The warranty is in lieu of all other warranties expressed or implied, including without limitations, any other implied warranty or fitness or merchantability for any particular purpose, all of which are expressly disclaimed. Proof of sale may be required in order to claim warranty.

www.elura.audio

MSTR

Rack Mounting Option.

1. Remove the feet of the amp using a Phillips-Head screwdriver.



2. Remove 4 screws from left & right side of the amp.



3. Attached supplied rack ears using the screws removed in step 2.



4. The single amp is ready to mount into a 1U rack space.

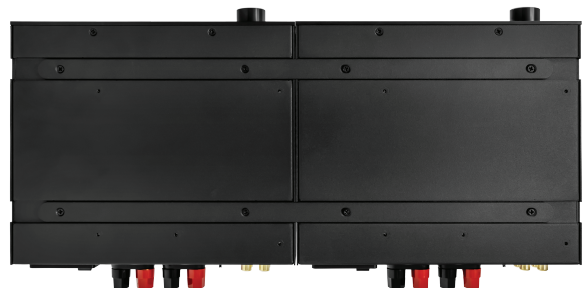
Dual Rack Mounting Option.

*Requires AMP50/2-RACK-KIT and 2x AMP50/2

1. Remove the feet of both amps using a Phillips-Head screwdriver.



2. Attach the 2 metal straps using the supplied 3x6mm flat-head screws NOTE: DO NOT use the feet screws. They are longer & could cause internal amp damage.



3. Remove 4 screws from left & right sides & use the removed screws or the 8 3x8mm screws provided with the AMP50/2-RACK-KIT to attach rack ears.



4. The dual strapped amps are ready to mount into a 1U rack space.

