



Please read the following instructions carefully.
Keep this instruction manual and save for future reference.

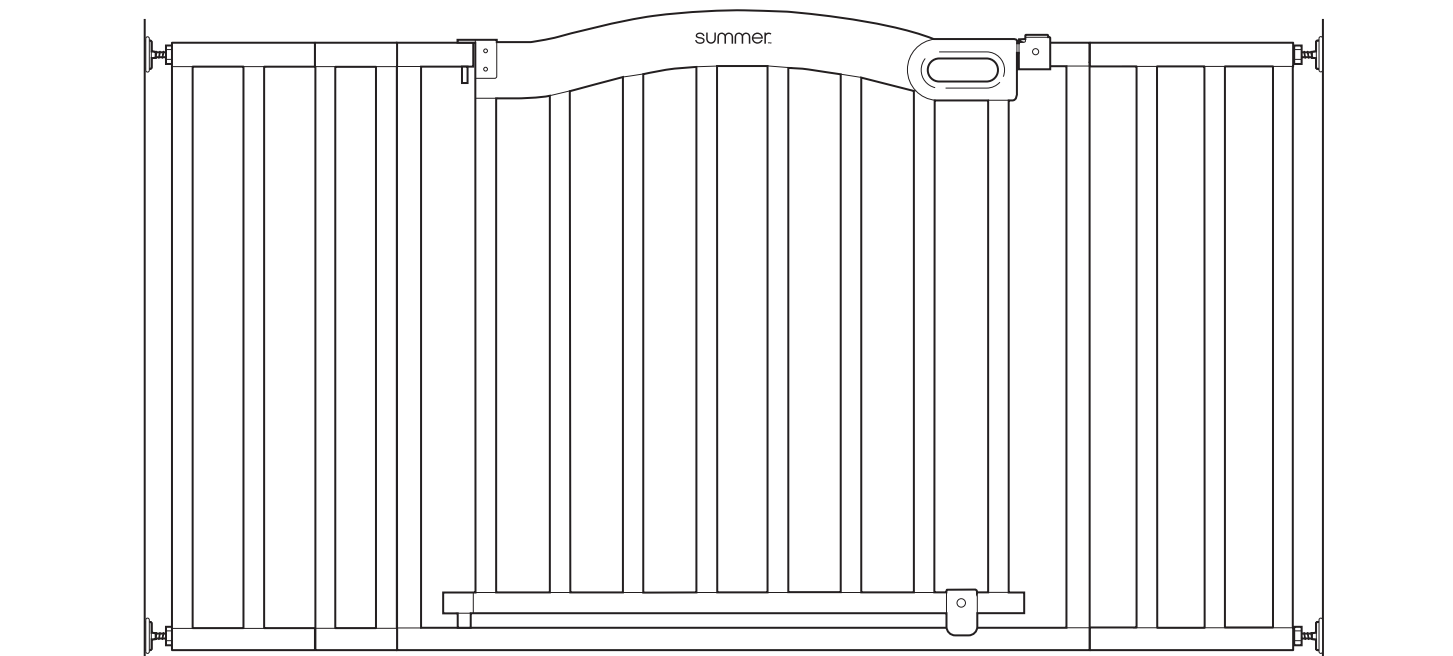
For technical support, contact us at **1-401-671-6551**
or **www.summerinfant.com/contact**

For use with children from 6 - 24 months.

Keep small parts away from children.

Adult assembly required.

Fits openings from 36" - 60" wide.



Decorative Wood & Metal Gate

INSTRUCTION MANUAL

! WARNING

Children have died or been seriously injured when gates are not securely installed.

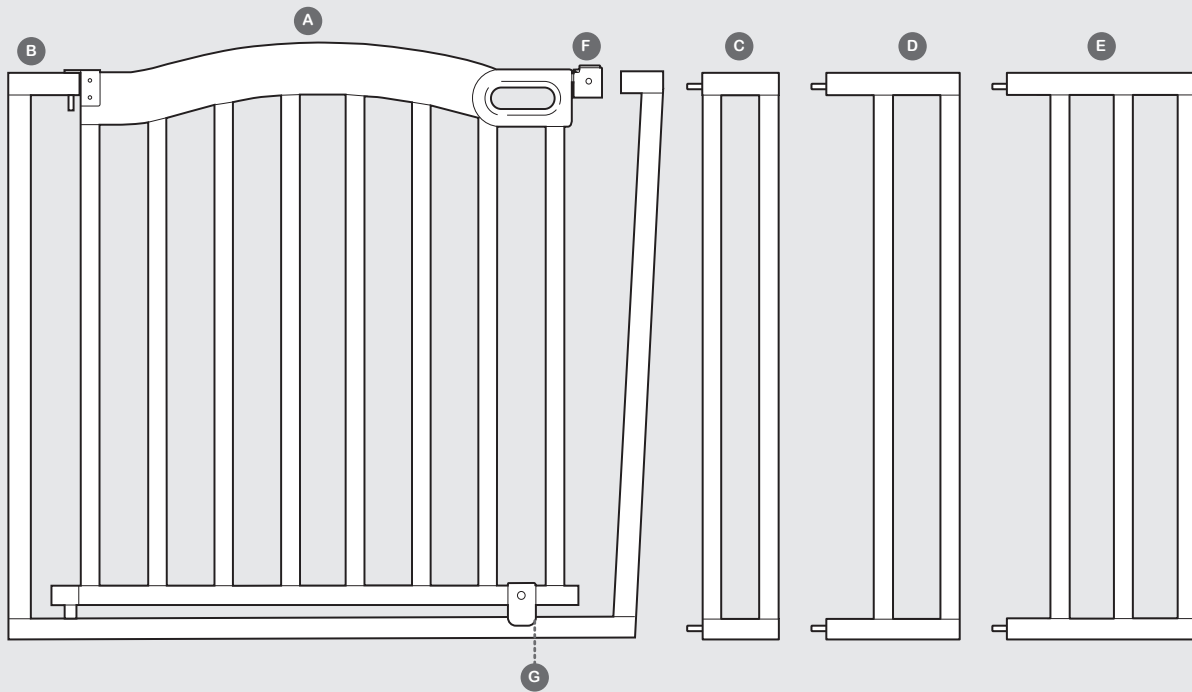
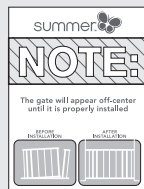
- ALWAYS install and use gate as directed using all required parts.
- Install according to manufacturer's instructions.
- Stop using when a child can climb over or dislodge the gate.
- Use only with the locking/latching mechanism securely engaged.
- To prevent falls, never use at top of stairs.
- You MUST install wall cups to keep gate in place. Without wall cups, child can push out and escape.
- **NEVER** use a gate to keep child away from pool.
- **NEVER** leave child unattended.
- **ALWAYS** close and lock the gate behind you.
- This product will not necessarily prevent all accidents. Proper adult supervision is required at all times.
- Do not use if any components are missing or damaged.
- Adult assembly required. Exercise care when unpacking and assembling product.

! CAUTION: KEEP SMALL PARTS OUT OF CHILD'S REACH.

components:

NOTE:

The gate will appear off-center until you add the tension bolts, mount it into the door frame and tighten the bolts according to the instructions.



A Gate Door

B Gate Frame

C Small Extension Frame

D Medium Extension Frame

E Large Extension Frame

F Top Latch

G Door Catch

H Wrench

I Tension Bolts (4)

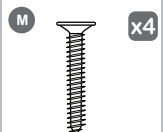
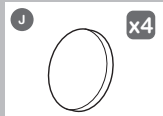
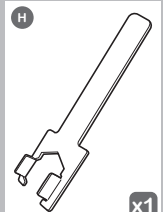
J Pad (4))

K Wall Cup (4)

L Anchors (4)

M Screws (4)

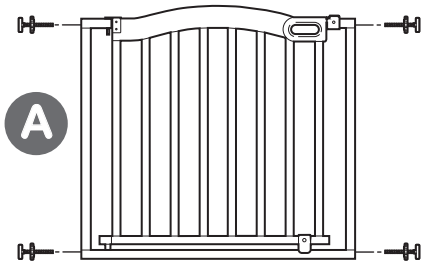
hardware:



gate configurations (choose which best fits your scenario):

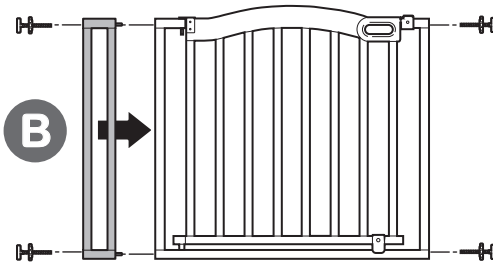


Measure the width of the opening where you intend to install the gate. Refer to the following illustrations to determine the correct installation configuration. Baseboard molding may change which configuration is appropriate.



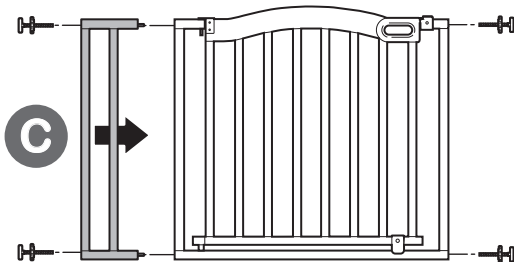
A

(36" - 39.75") without Extensions



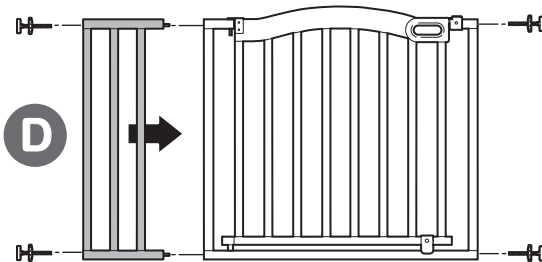
B

(39.75" - 43") with 4" Short Extension



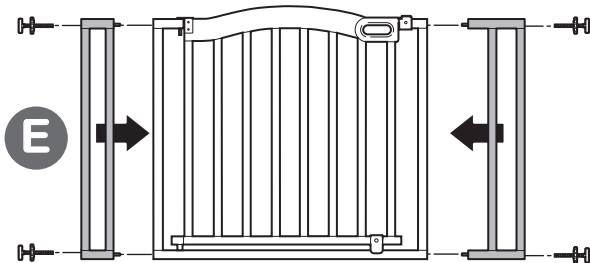
C

(43" - 46") with 7" Medium Extension



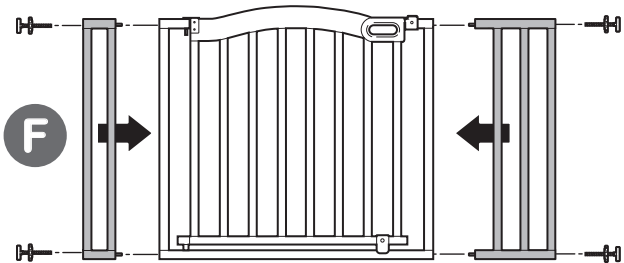
D

(46" - 49") with 10" Long Extension



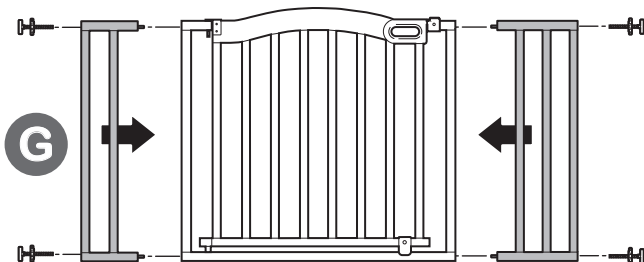
E

(47" - 50") with 4" Short & 7" Medium Extensions



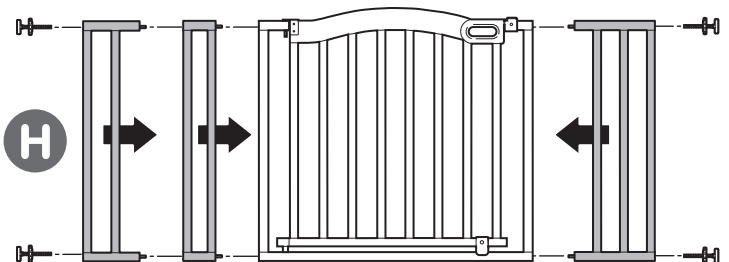
F

(50" - 53") with 4" Short & 10" Long Extensions



G

(53" - 56.75") with 7" Medium & 10" Long Extensions



H

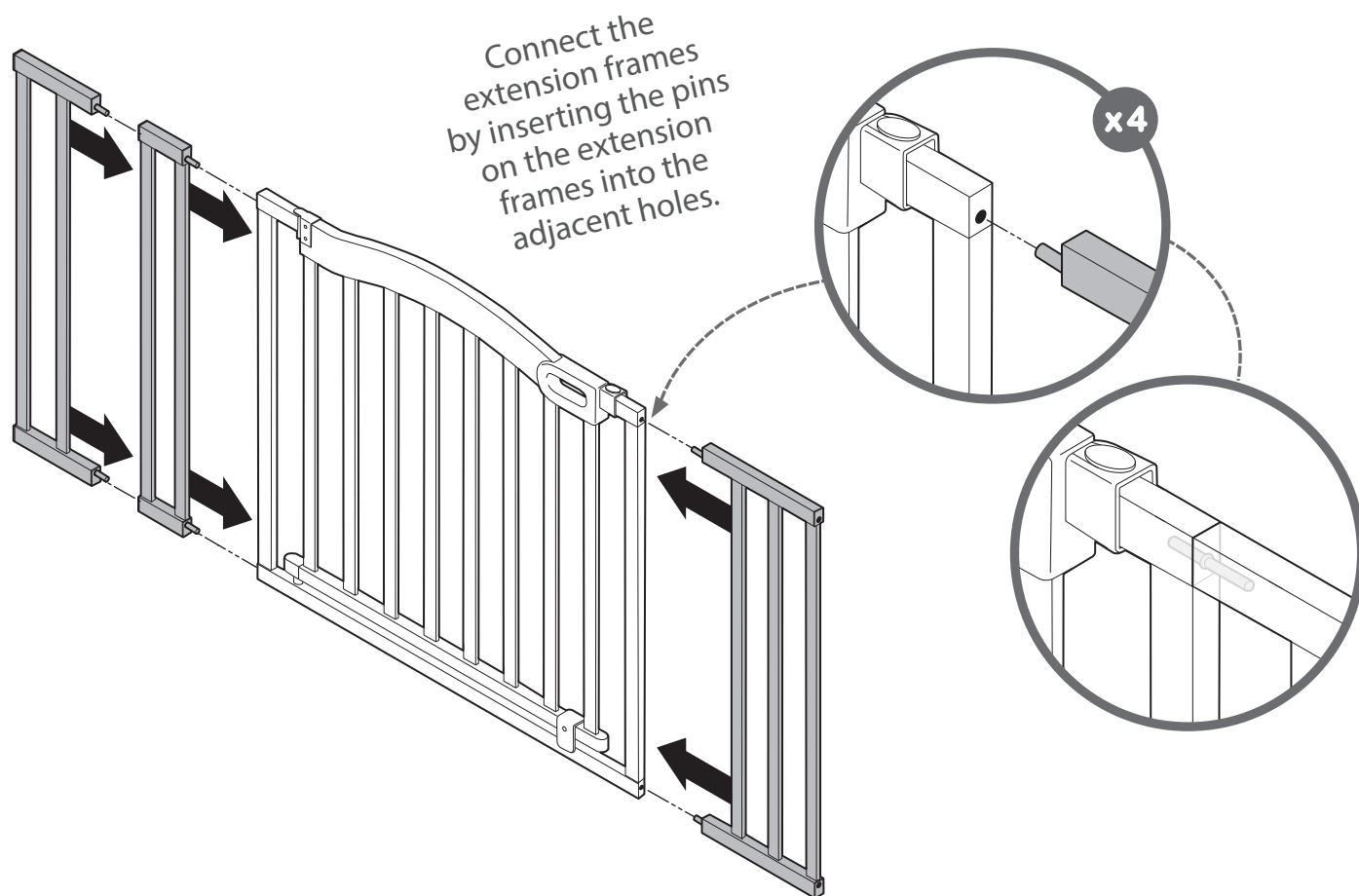
(56.75" - 60") with 4" Short, 7" Medium & 10" Long Extensions



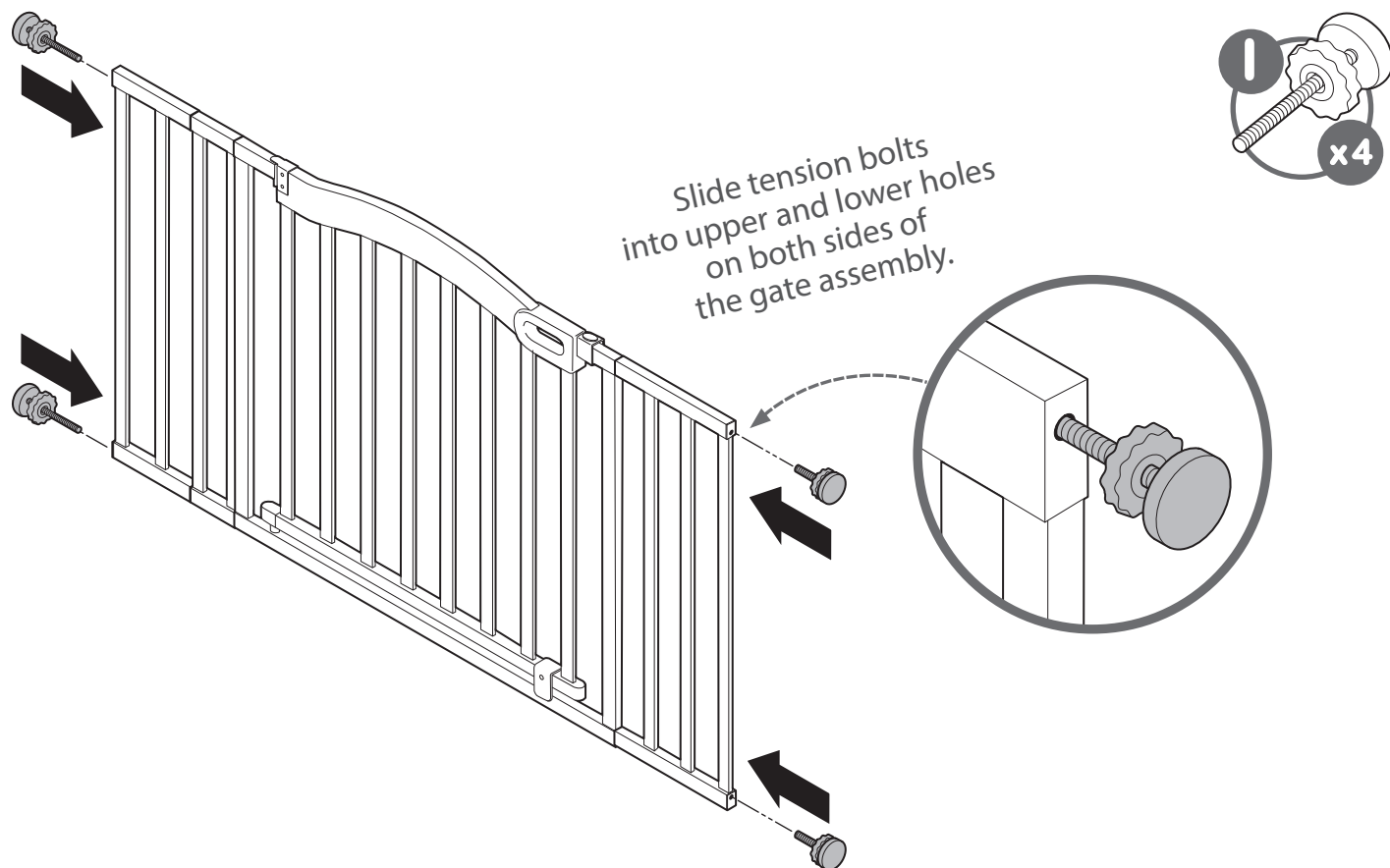
NOTE: This instruction book illustrates installation of gate configuration H. If choosing gate configuration A, skip ahead to step 2. Otherwise, follow step 1 using the appropriate extension frames that best fit your scenario.

installation:

1



2



Checking the gate fit in the door frame

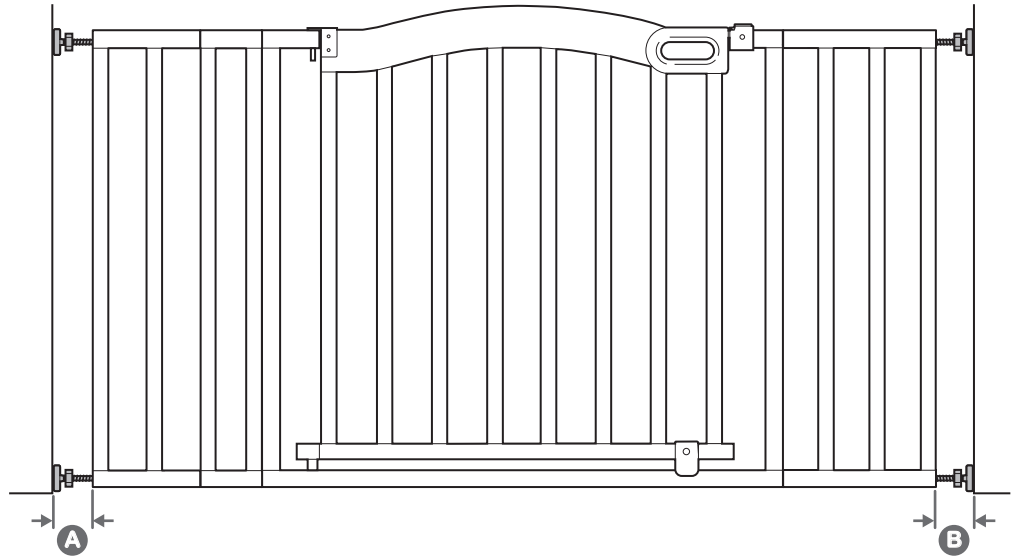
3

Stand the gate in the center of the opening. Make sure the bottom of the gate is completely flat to the floor. Slide tension bolts out until they touch the door frame or wall.

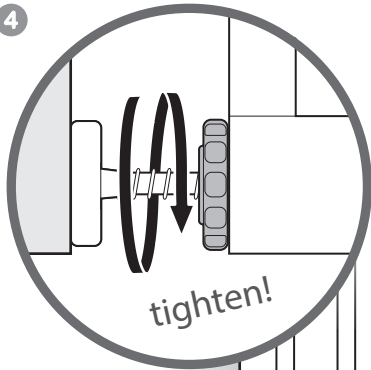
Check distances A & B. They should never exceed 2.75".

IMPORTANT

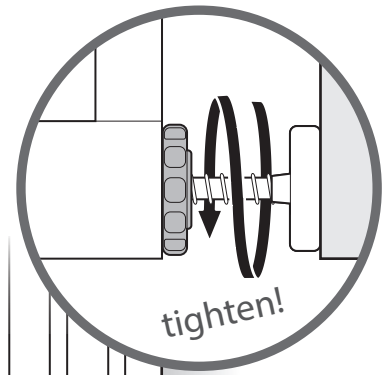
The distance between the gate and the wall should never exceed 2.75".



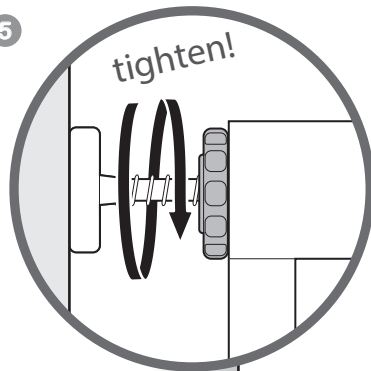
4



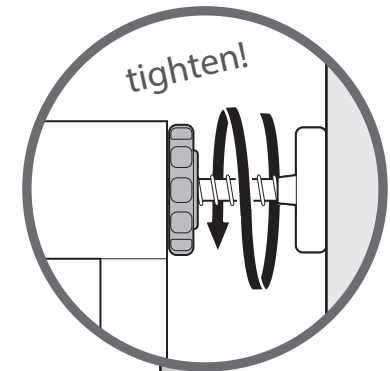
Use the tension nuts to tighten both of the bottom tension bolts.



5



Use the tension nuts to tighten both of the top tension bolts.



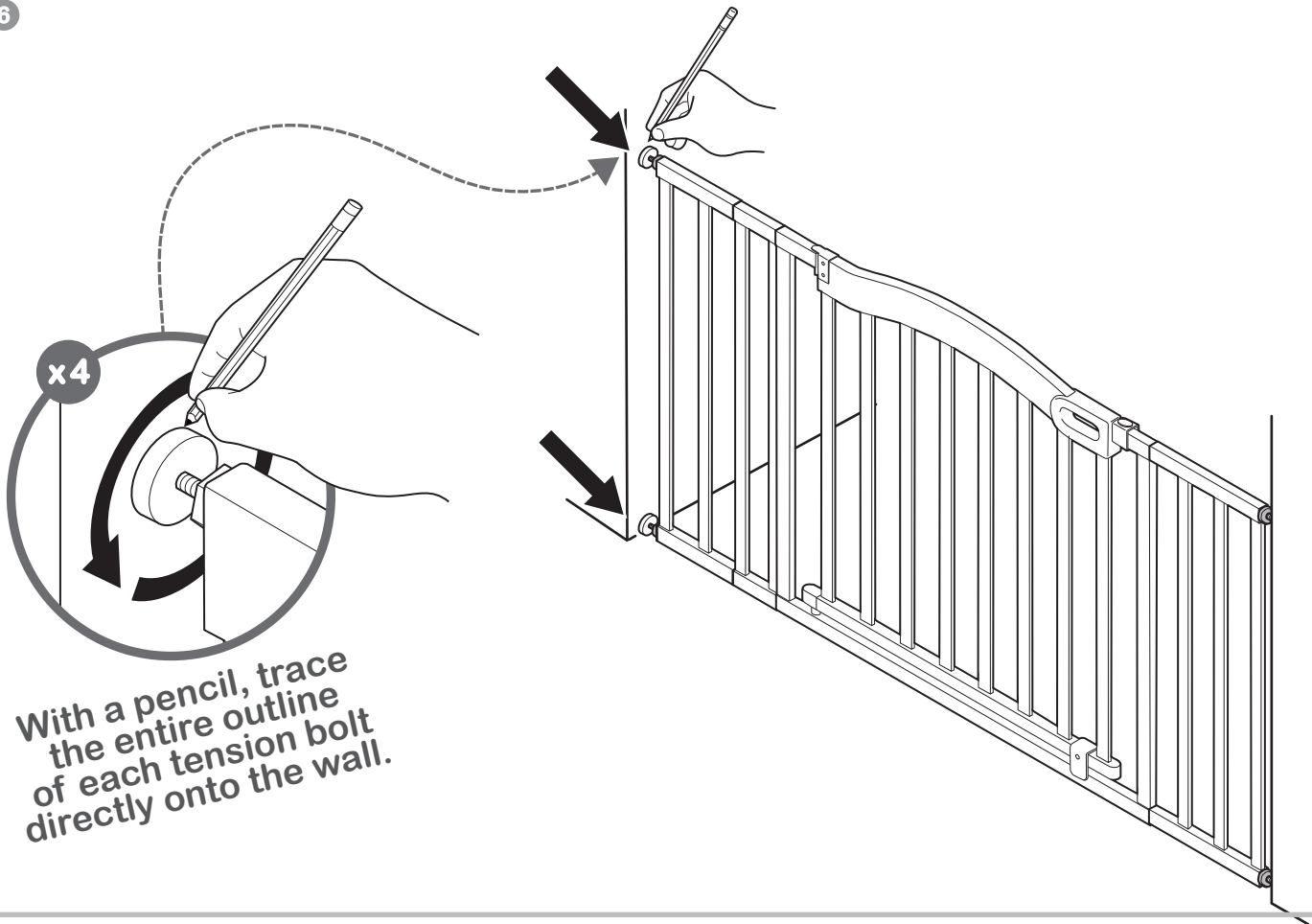
Proceed to Wall Cup Installation section once check is complete. 5

wall cup installation

⚠ WARNING

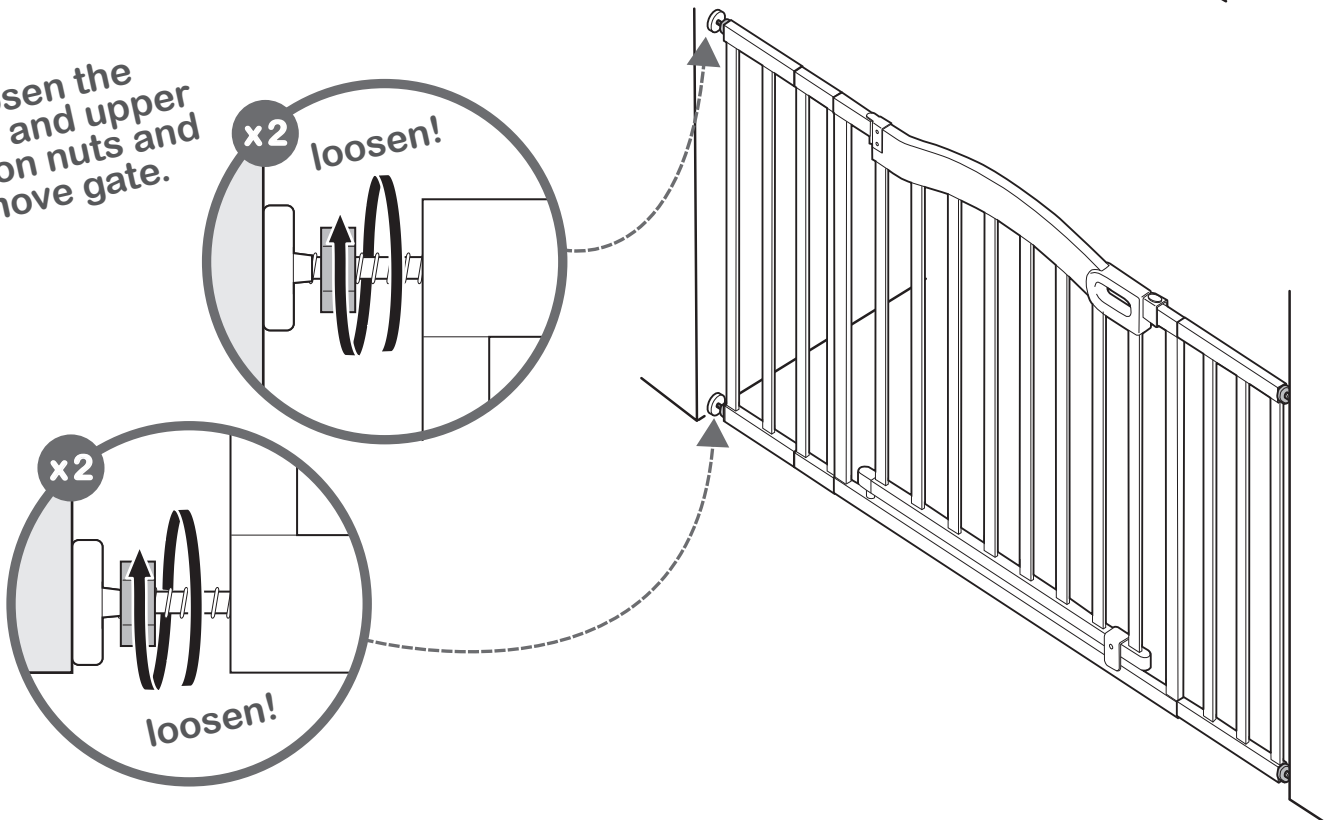
You **MUST** install wall cups to keep gate in place. Without wall cups, child can push out and escape.

6



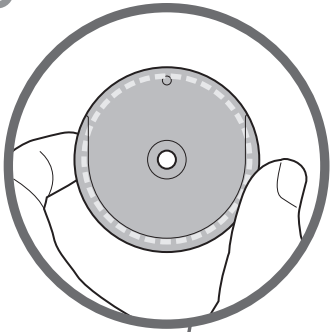
7

Loosen the lower and upper tension nuts and remove gate.

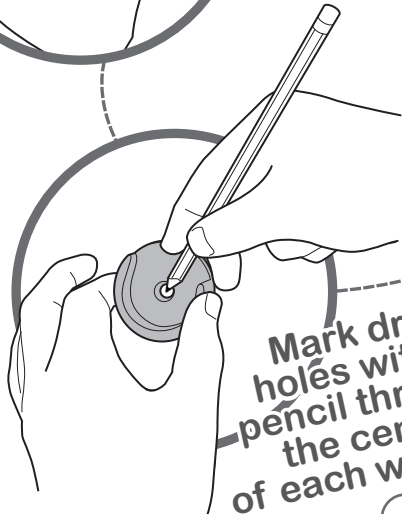


wall cup installation (continued)

8

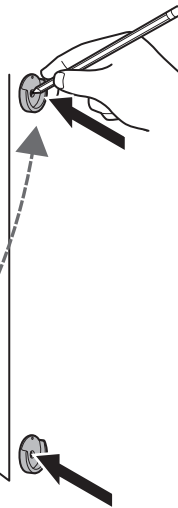


Place a wall cup over the center of each circular outline on the wall.



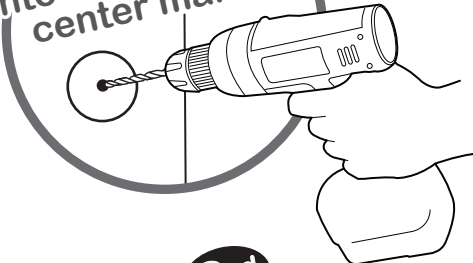
Mark drill holes with a pencil through the center of each wall cup.

x4

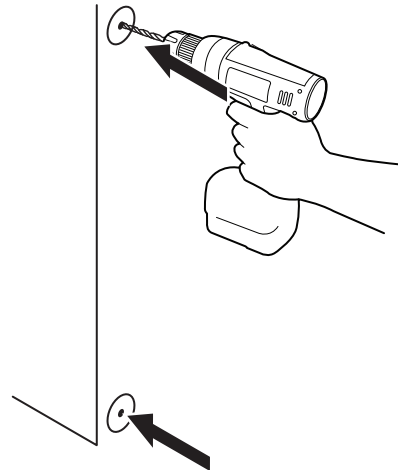
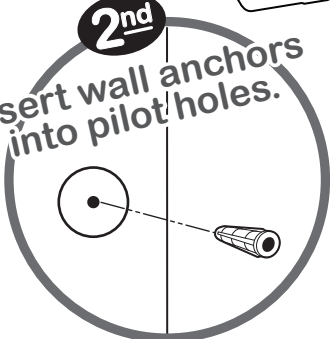


9

1st
Drill a 7/32" pilot hole into each of the 4 center marks.



2nd
Insert wall anchors into pilot holes.



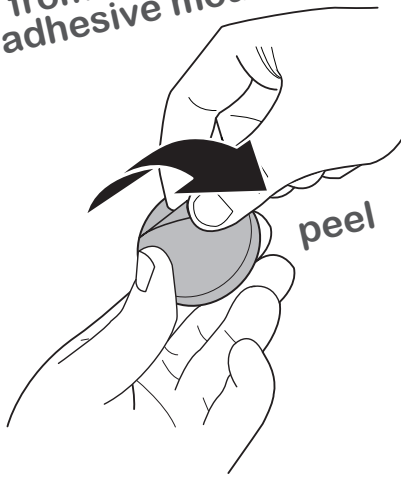
x4



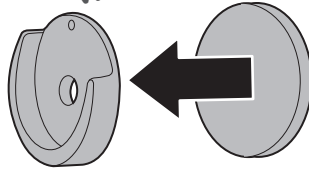
wall cup installation (continued)

10

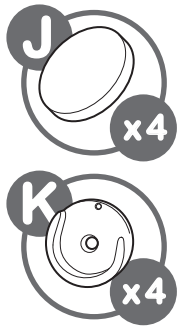
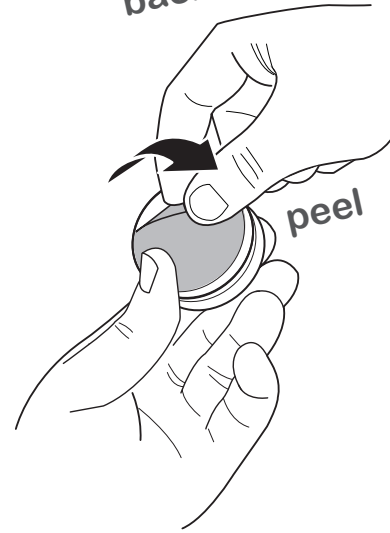
1st
Remove backing
from one side of each
adhesive mounting pad.



2nd
Attach one pad to
the back of each
wall cup.

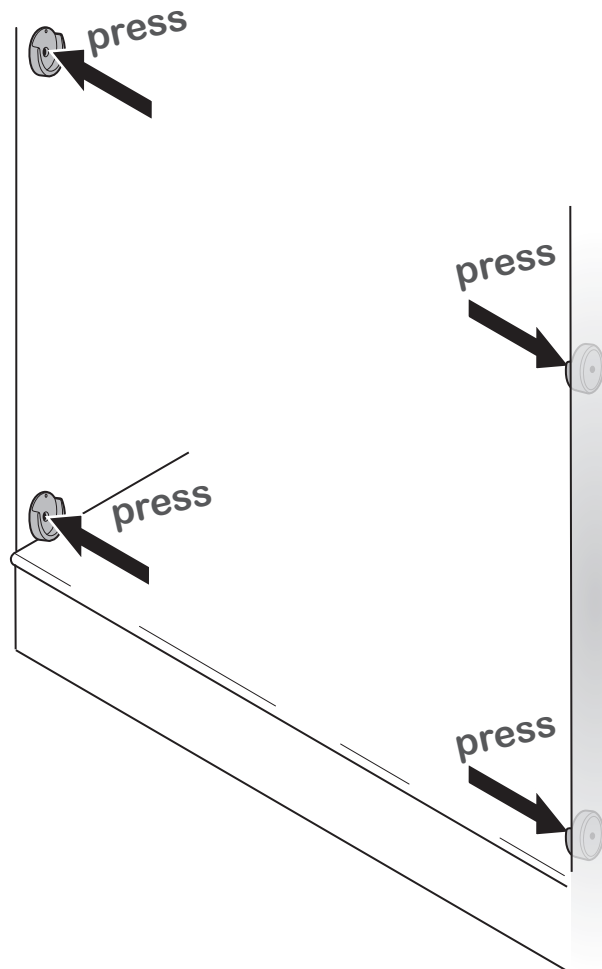
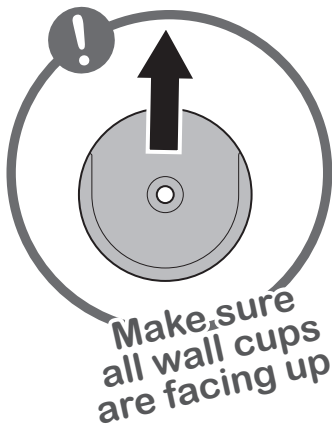


3rd
Remove
backing.



11

Align the wall cups so
the center hole
is placed directly
over the wall anchor.
Stick the wall cups
to the wall.

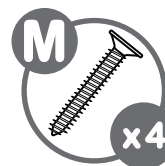
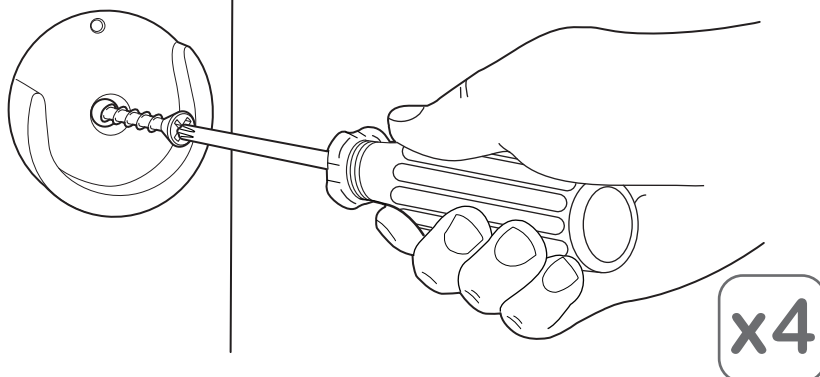


wall cup installation (continued)

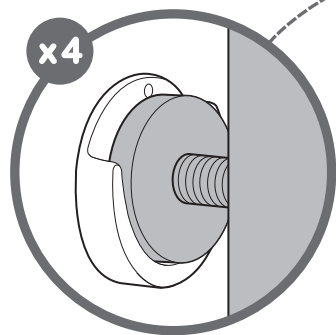


Screw
wall cups
into wall.

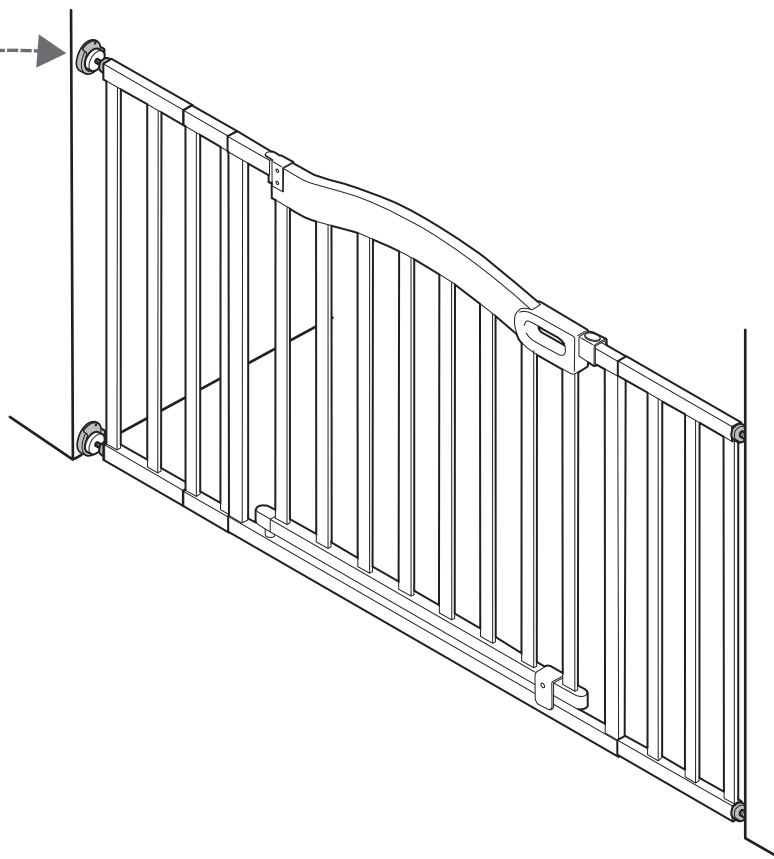
12



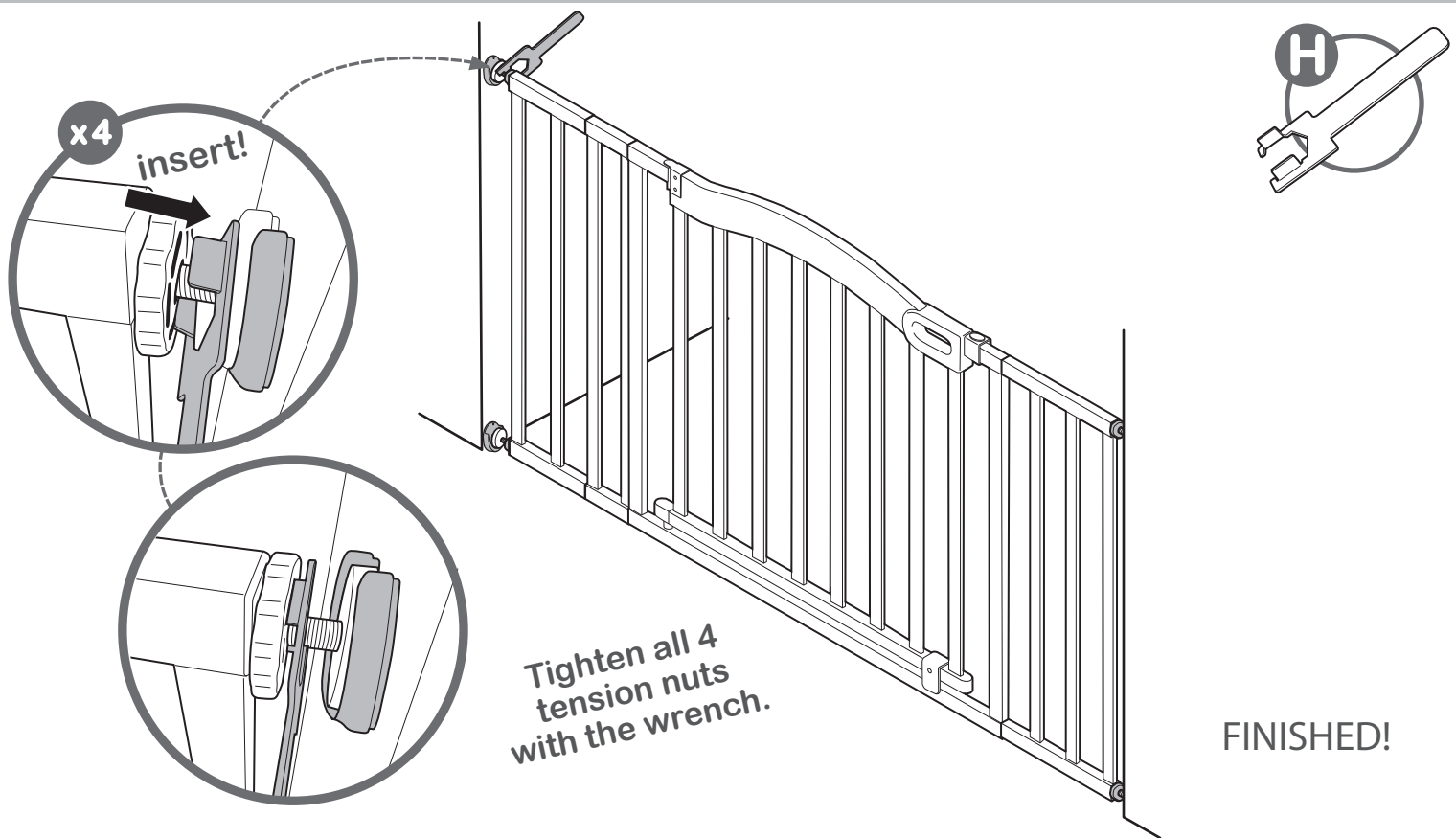
13



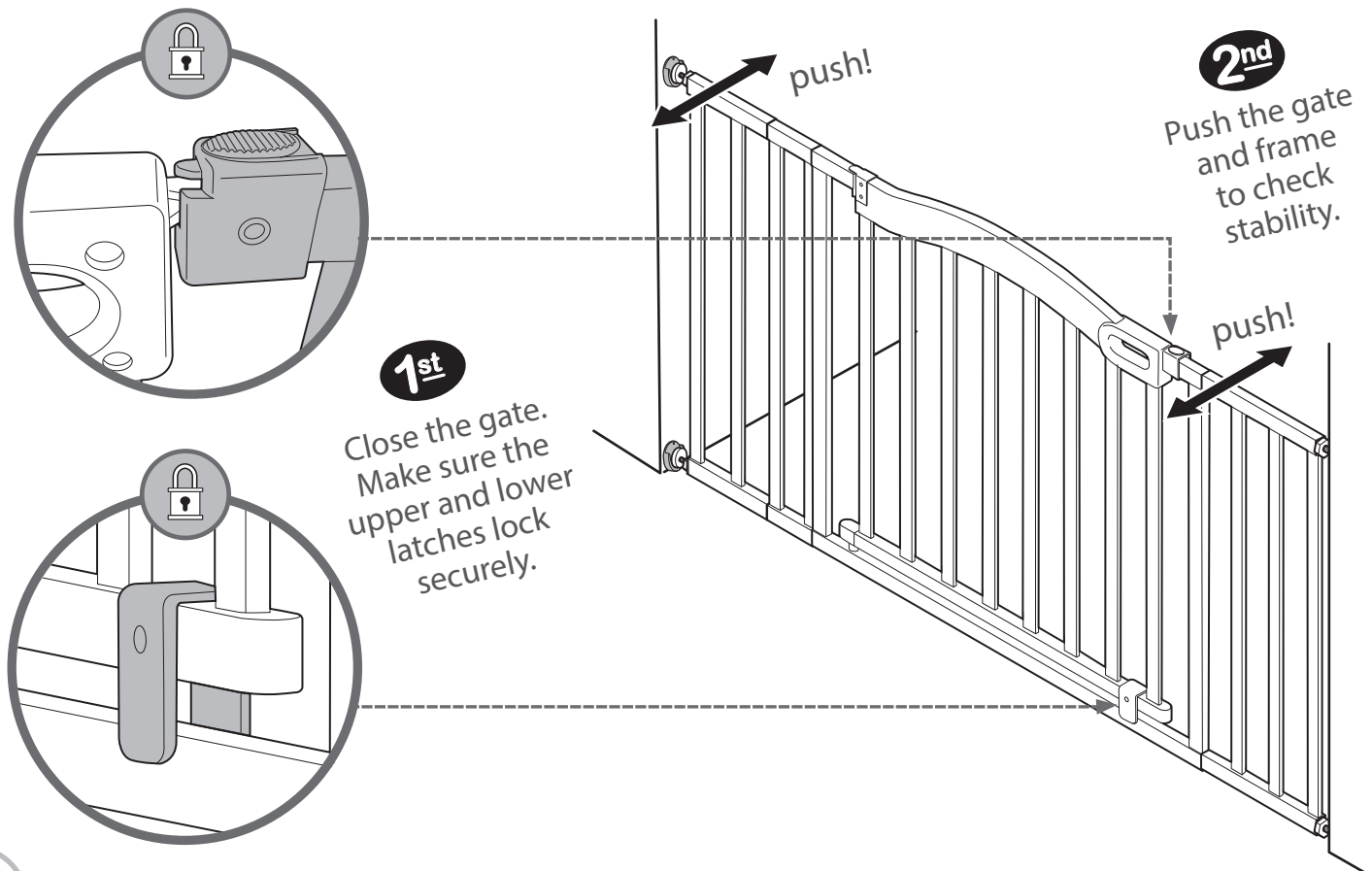
Repeat "installation"
steps on page 5.
The 4 tension bolts
will rest within
each wall cup.



Installation (continued):



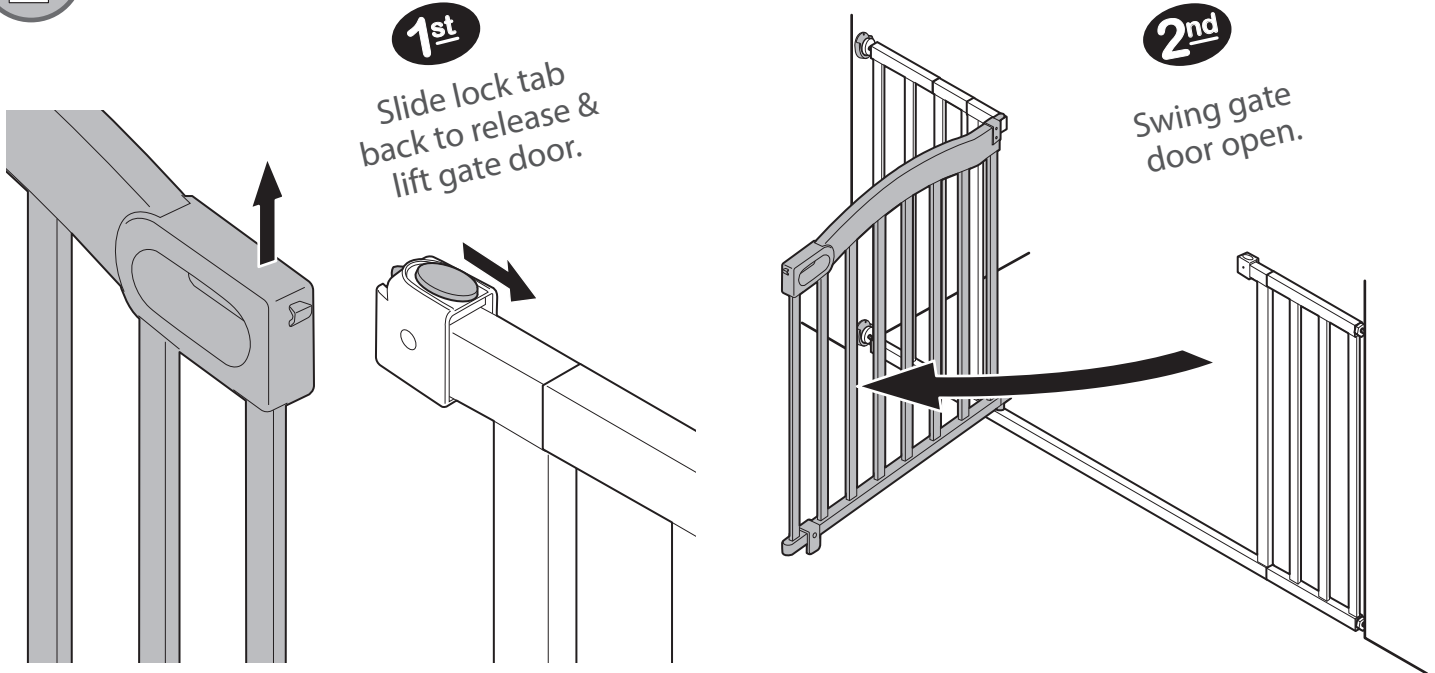
testing the installation:



operation:



to unlock gate:



troubleshooting:

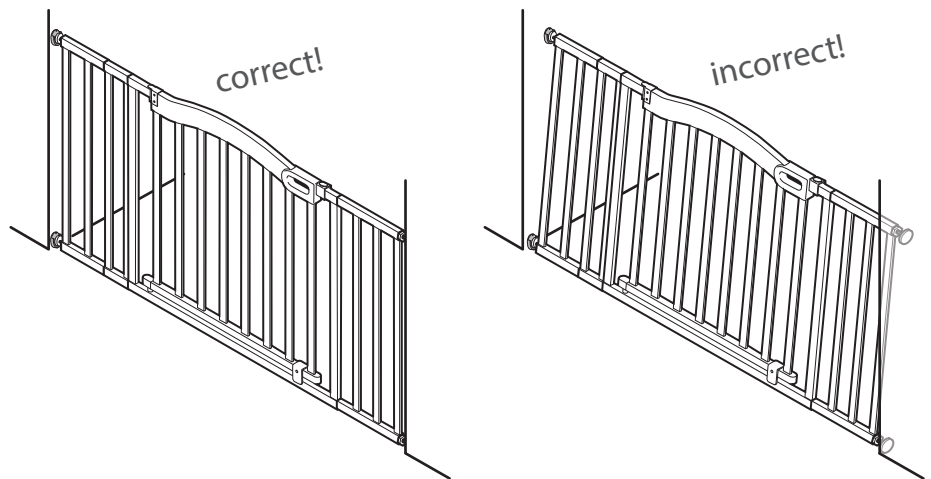
If the gate does not close properly:

1. Gate is not properly aligned in the door frame.

Solution: Make sure the gate is properly aligned in the door frame. To adjust the gate's alignment, loosen all four tension bolts and reposition gate so that it matches the "correct" image. Re-tighten tension bolts.

2. Pressure of tension bolts needs to be adjusted.

Solution: Loosen or tighten the upper tension bolts. Ensure the upper latch always remains below the release button. Ensure the upper latch engages securely when the gate swings closed and that it can be released properly when the release button is pushed.



maintenance:

- Regularly check tension bolts to make sure the gate is securely in place.
- Do not use the gate if any components are damaged or missing.
- Surface-clean with a damp cloth or sponge using mild detergent and warm water.
- To order a replacement hardware kit (item #27070-10), please contact our Consumer Relations Team at 1-401-671-6551.

We're here to help!

If you have any questions or need assistance,
contact our Consumer Relations Team at

1-401-671-6551 or **www.summerinfant.com/contact**

Summer Infant (USA), Inc.

1275 Park East Drive
Woonsocket, RI 02895 USA
1-401-671-6551

© 2020 Summer Infant (USA), Inc.

Colors and styles may vary.

MADE IN CHINA.

D0000000791 6/20