

Product Description: Rect TW Bulk RSC			Market:		
Customer Item Description: NIBC36			Style: RSC		
ID: 36" x 36" x 36"	Net Blank: 74" x 151 5/16"	Joint: Glue Outside			
OD: 37 1/4" x 37 1/4" x 37 1/4"	Blank Sq Ft: 77.76 sq ft	Corr. Dir: Vertical			
ECT Stamp: 112	Mullen Stamp: 1100	Converting Wax:	Adhesive: WPA Starch		
Stock: ACA-69L-36M-69L-36M-69L-36M-69L		Flute: ACA	Finish: Kraft		

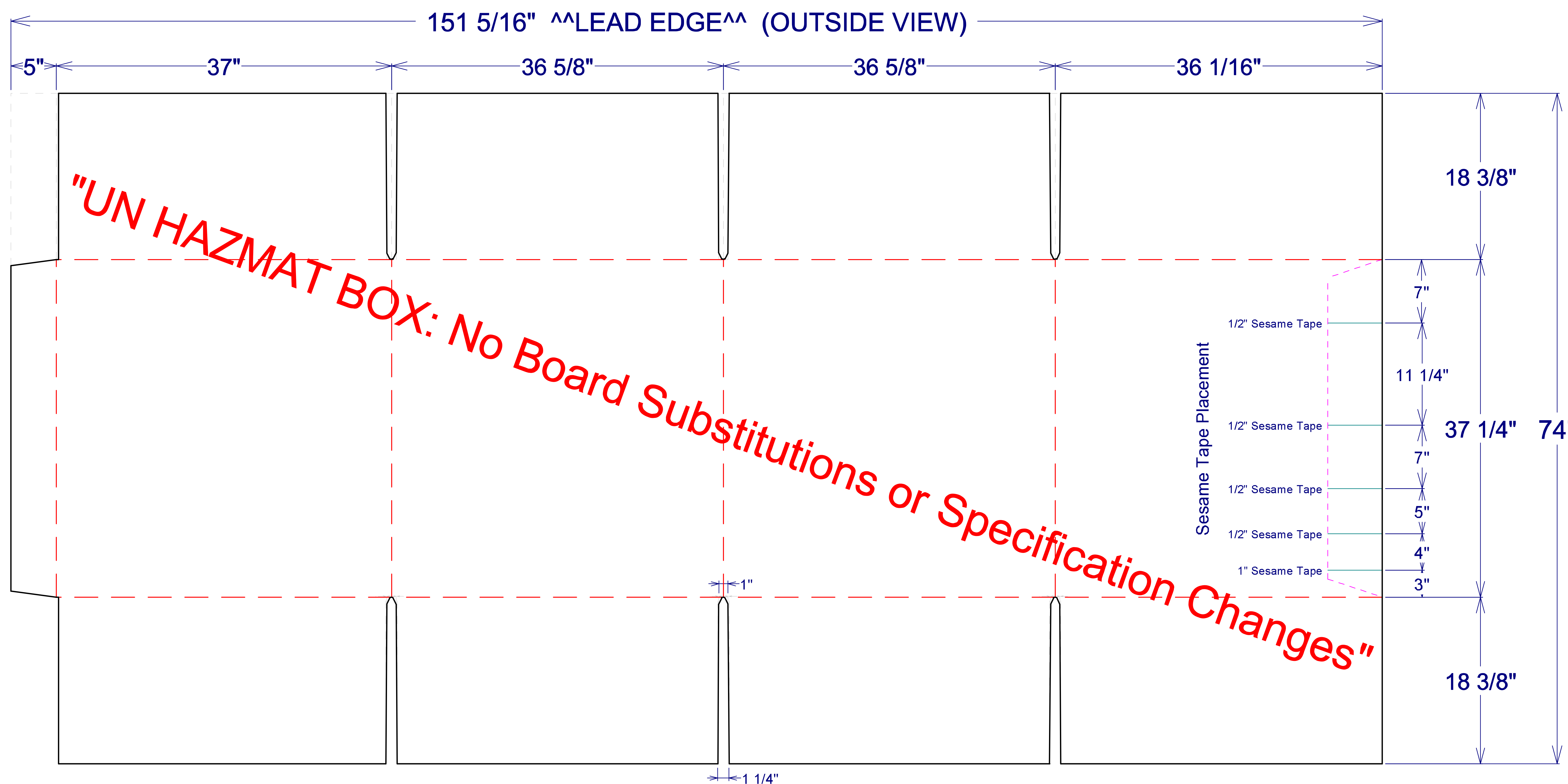
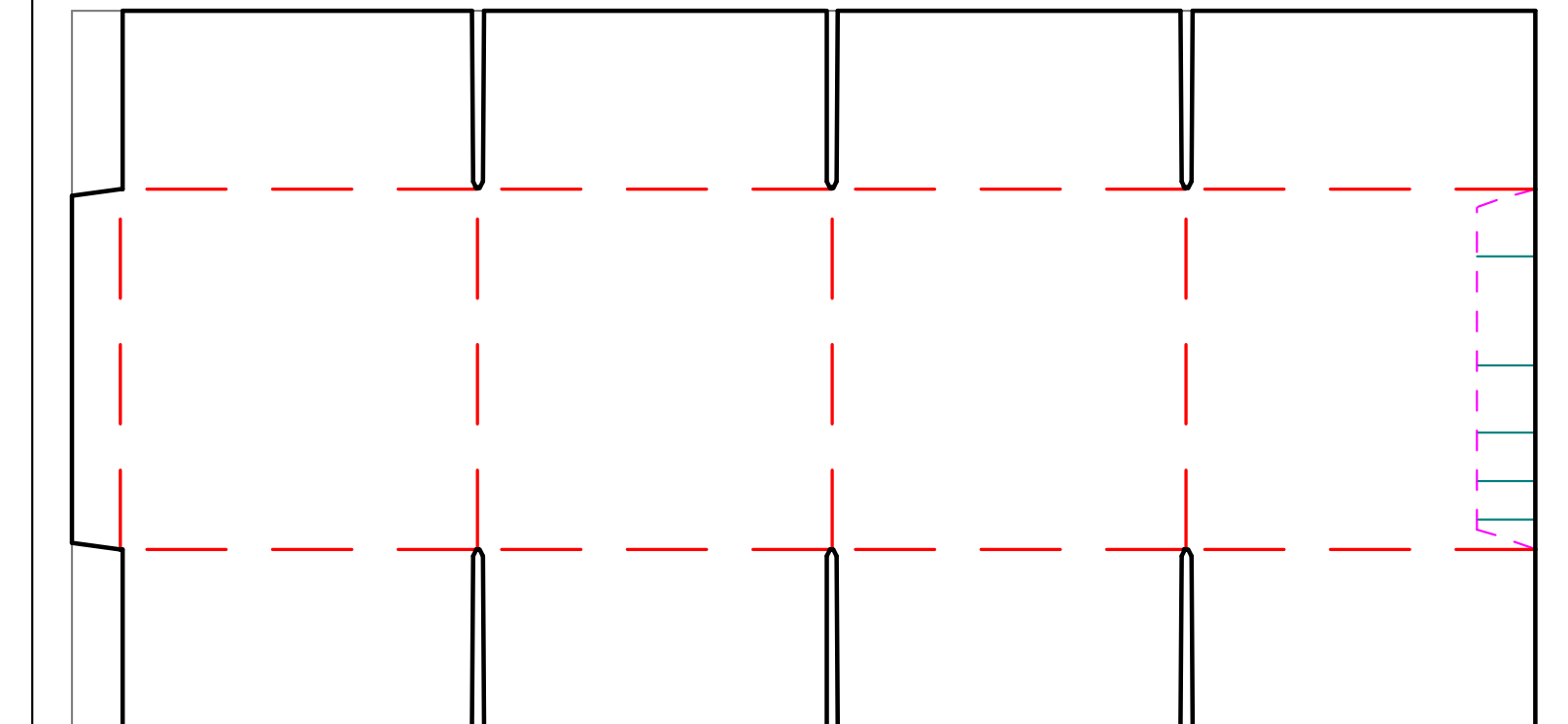
Construction Card #: 210305/210306

Cutting Die #: N/A

Print Card #: S-57

Gap Top 1/2"
Gap Bottom 1/2"

Outside View



One out rule inches: 1135.92"

One Up Waste Sq. Ft.: 77.76	Total Waste Sq.Ft.: 77.76
---------------------------------------	-------------------------------------

Number Thru: 1	Number Across: 1
-------------------	---------------------

Trim - Thru: 0"	Trim - Across: 0"
--------------------	----------------------

Gross Corrugator Sheet Size
74" x 151 5/16"

Approved For MFG: _____

Date: _____

MFG Notes:
1" Trim - 75" Paper.
UN HAZMAT BOX: No Board Substitutions or Specification Changes

Special Instructions:

DISCLAIMER

This specification does not relieve the customer of their ultimate responsibility for the determination of the appropriate container. It is the customer's responsibility to select the appropriate packaging based upon all information at their disposal including the specific application, regulatory compliance, product compatibility and shipping requirements. WE HEREBY DISCLAIM AND EXCLUDE ANY EXPRESS OR IMPLIED WARRANTIES, INCLUDING WITHOUT LIMITATION THE IMPLIED WARRANTIES OF MERCHANTABILITY AND FITNESS FOR A PARTICULAR PURPOSE.

DISTRIBUTED BY:



REF NO.:

DWG60009

DESCRIPTION:

Intermediate Bulk Container, Cubic Yard Container with Pallet, Triple Wall Fluted Corrugated Box, UN Rated