

How to Use Hand Tools to Apply 1/2" Fashion Grommets with Inserts

Fashion Grommets not only have a smooth front surface, but the back is also smooth so that they are suitable for use next to the skin. An insert sits between the front and back, providing extra stability and support, and eliminating the need to reinforce the area with interfacing. These versatile grommets can be used as easily on light weight fabrics as they can on heavier weights. Use them as surface decoration or to lace up garments, totes, costumes and accessories, always achieving a professional finished appearance.

The measurement indicates the interior diameter. A 1/2" two-part grommet has a finished interior dimension of 1/2".

You will need the following:

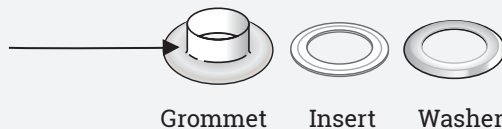
- Your project, hemmed
- 2-part Fashion Grommet kit with tools, #740-1-T or #740-9-T
- Straight pins – any style
- Marking pencil
- Hammer
- Sharp scissors

Optional:
Fray Check®

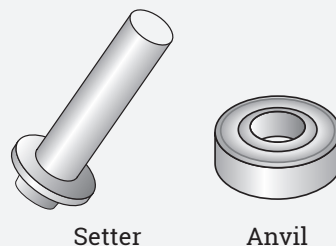
What are the parts called?

Grommet:

The shaft of the grommet is called the post



Tools:



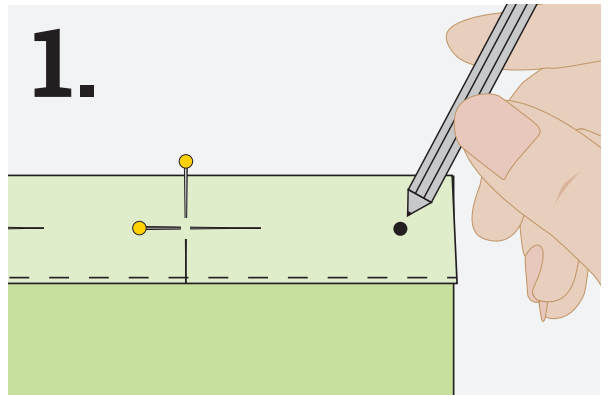
ALTERNATE NAMES

Did you know that eyelets are often called grommets? Smaller sizes are traditionally referred to as eyelets, while larger sizes are usually called grommets, but don't let the name fool you. Packaging names seem to be interchangeable! Choose the size you want for appearance and use, no matter what they are called.

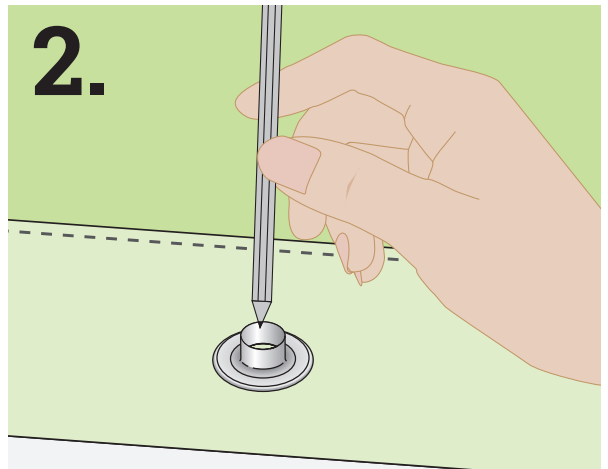


How to Use Hand Tools to Apply 1/2" Fashion Grommets with Inserts:

1. You have measured your project and placed a pin at each grommet location. (See the tutorial – “How to Measure for Grommet and Eyelet Placement.”) Now, place a mark at each pin intersection.

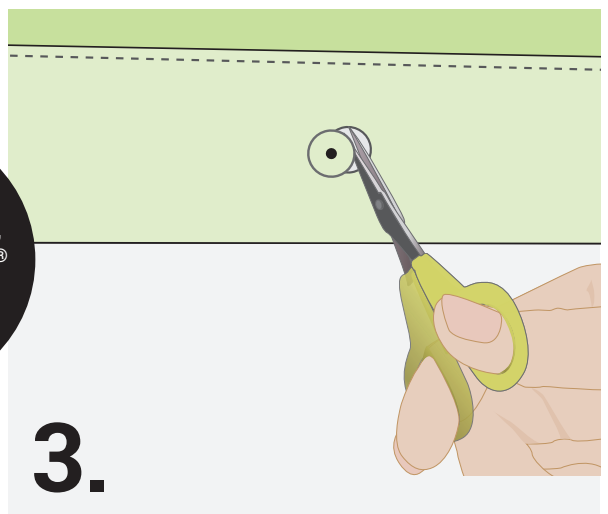


2. Mark position of grommet by tracing around inside opening of grommet.



3. Cut a hole with a small pair of scissors. For fabrics with stretch, cut hole smaller than inside opening of eyelet.

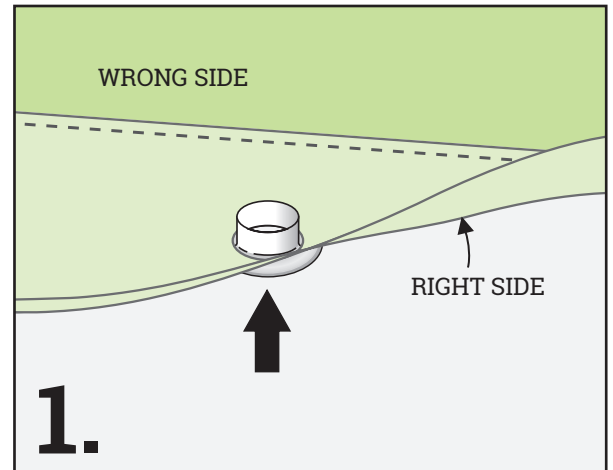
TIP: For fabric that ravels easily, apply Fray Check® to cut edges of marked circle.



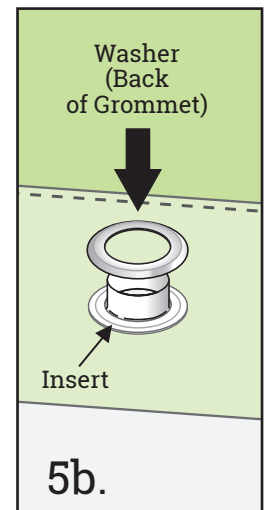
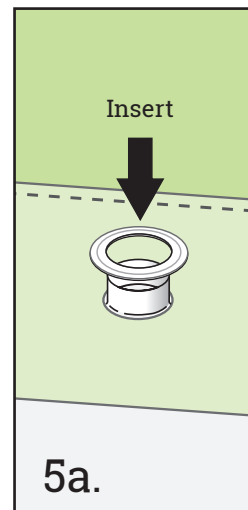
TECHNIQUE TUTORIAL

How to Use Hand Tools to Apply 1/2" Fashion Grommets with Inserts:

4. Insert deep half of grommet (front) into hole from right to wrong side of fabric.



5. Place white insert over center of grommet on wrong side of fabric (5a). Place washer (back of grommet), dome side up, over insert (5b).



How to Use Hand Tools to Apply 1/2" Fashion Grommets with Inserts:

6. With wrong side of fabric facing up, position grommet front on anvil and insert setter into post. Hammer gently until front and back are fitted tightly together. Center of grommet front will roll over inside edge of washer and provide a smooth finish.

TIP: Work on a hard surface, such as cement or stone for best results.

