

PRODUCT CATALOGUE



TOGETHER, WE GET IT DONE.™

2024

LOCALLY MADE



On October 6, 1958, a Pennsylvania corporation was formed and was called Corrosion Reaction Consultants, Inc. The company began making and selling "CRC Corrosion Inhibitor" – a multi-purpose corrosion inhibitor/lubricant that with later modifications, developed into CRC 5.56.

The first CRC product came to New Zealand in 1961 as an agency line and was sold in limited quantities to the automotive and electrical trades.

In 1973 CRC Chemicals NZ Ltd was formed based in Wellington. In 1974 the New Zealand operation was moved to Auckland and by late 1974 small warehouses were set up in Wellington and Christchurch.

Over the years CRC has been pleased to be associated with many well known personalities and sports bodies such

as rally events (the late Rodger Freeth, Possum Bourne), Western Springs Speedway, Rugby League and Yachting. All these have been invaluable in promoting the CRC brand name and image.

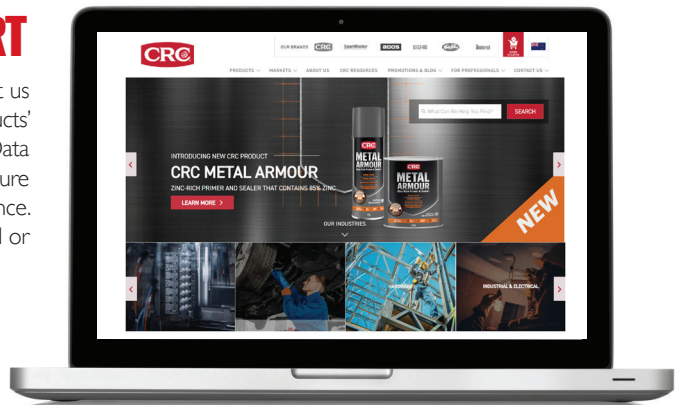
CRC Industries has facilities for production, research and customer service in USA, Europe, Asia, Australia and New Zealand and our extensive product range is recognized worldwide as we serve the many segments of the international automotive and industrial markets.

Whatever your requirements are, CRC has a quality product to meet most maintenance and repair applications. Meeting the needs of customers with high performance products has made CRC Industries New Zealand a leader in the specialty chemical and adhesive industries.

TECHNICAL SUPPORT

To see the entire range of CRC Industries products, visit us online where you have ease of access to all of our products' information, including Safety Data and Technical Data sheets. We constantly conduct on-going updates to ensure you remain at the highest level of regulatory compliance. CRC also have telephone support available for technical or product inquiries.

PH 09 272 2700
WWW.CRC.CO.NZ



CATALOGUE CONTENTS

| | |
|-------------------------|----|
| LUBRICANTS & PENETRANTS | 4 |
| CLEANERS & DEGREASERS | 9 |
| CORROSION PROTECTION | 14 |
| PAINTS | 19 |
| SPECIALTY | 22 |
| GREASES | 26 |
| SEALANTS | 28 |
| ADHESIVES | 32 |
| VEHICLE CARE | 38 |
| AUTOMOTIVE | 44 |
| FOOD GRADE | 49 |
| SMARTWASHER | 55 |



LUBRICANTS & PENETRANTS



5-56 Multi-Purpose

CRC 5-56 Multi-purpose is a service spray lubricant that penetrates, lubricates and prevents corrosion. It's the original toolkit in a can.

- Advanced lubrication for smooth action – silences annoying squeaks and squeals
- Stops and attacks rust – protective film for ongoing protection against corrosion
- Displaces moisture to help start wet engines

PACK SIZE & PART NUMBER

- Aerosol 210ml - 5028 • Aerosol 380ml - 5029 • Aerosol 420ml - 1751837
- Aerosol 550ml - 5006 • 4L - 1751846 • 20L - 5009 • 200L - 5011



5-56 Low Odour

The trusted 5-56 multi-purpose service spray in a low odour, no solvent formula. Ideal for areas where odour may be a concern, in confined spaces or where solvent use is regulated.

- Low odour
- No solvent
- Advanced lubrication for smooth action – silences annoying squeaks and squeals

PACK SIZE & PART NUMBER

- Aerosol 420ml - 1751840



5-56 Electrical

CRC 5-56 Electrical is a multi-purpose plastic safe lubricant, penetrant, cleaner and corrosion inhibitor that helps prevent electrical malfunction caused by water penetration, humidity, condensation or corrosion.

- Multi-purpose product for electrical equipment – precision lubricant, corrosion control, penetrant, cleaner
- Seals out moisture, resists difficult environmental conditions
- Repairs water damaged equipment – restores electrical properties
- Non-flammable and silicone-free

PACK SIZE & PART NUMBER

- Aerosol 420ml - 1751841



5-56 Industrial

CRC 5-56 Industrial is a high performance variant of CRC 5-56 fortified with PTFE for additional lubricating performance.

- Displaces moisture to help start wet engines
- Inhibits corrosion – long-lasting protective film provides ongoing protection against corrosion
- Penetrates quickly, frees rusted parts
- Non-flammable

PACK SIZE & PART NUMBER

- Aerosol 420ml - 1751842 • 4L - 1751847 • 20L - 5012



5-56 Marine

CRC 5-56 Marine is a multi-purpose lubricant designed to prevent damage due to water and salt atmosphere in marine engines and boating equipment.

- Multi-purpose oil for the protection of marine engines and boating equipment
- Lubricates for smooth action – silences annoying squeaks and squeals
- Corrosion protection
- Penetrates quickly – breaks away rust and corrosion, frees components bonded by dirt and scale

PACK SIZE & PART NUMBER

- Aerosol 420ml - 1751839 • 4L - 1751848



NOXY

CRC NOXY is a multipurpose high strength lubricant and CC3 based anti-corrosion formula, which is safe to use on almost any surface and application, being non-toxic, non-staining, non-static and non-conductive.

- Permastraw™ dual-action spray system
- Displaces, penetrates, lubricates, and protects
- Contains no silicone, acid, kerosene, or dieselene
- Will not dry out or wash off with water
- Ideal for industrial, recreational and home use

PACK SIZE & PART NUMBER

- Aerosol 400ml - 3027



808 Silicone

CRC 808 Silicone is a multi-purpose silicone spray for general lubrication.

- Revives, lubricates, reduces friction, waterproofs, cleans and shines
- Clear, odourless, non-staining – no need for messy greases and oils
- Harmless to most materials – metals, plastics, rubber, adhesives, wood, fabrics, glass, inks and paints
- Provides ongoing protection over a wide range of temperatures & pressures
- Does not damage surfaces or leave marks or stains

PACK SIZE & PART NUMBER

- Aerosol 500ml - 3055 • 4L - 3056



Extreme Duty Silicone

CRC Extreme Duty Silicone is a premium grade silicone fluid with excellent lubrication and temperature viscosity characteristics.

- Superior lubricating properties – even in demanding conditions
- Clear, odourless, non-staining
- Resists moisture – stays in place in damp environments

PACK SIZE & PART NUMBER

- Aerosol 300g - 3030



Silicone Mist

CRC Silicone Mist is a dry-type silicone spray formulated with 100% pure food grade silicone oil for light lubrication and mould release.

- Creates non-stick surface – eliminates drag, sticking and puckering
- Clear & odourless – pure food grade silicone. No solvents. No bulking agents
- Does not build up, carry over or soak in
- Can be used on equipment in operation minimising downtime
- MPI Approved C26

PACK SIZE & PART NUMBER

CRC • Aerosol 500ml - 3048



Multilube Gel

CRC Multilube Gel is a unique synthetic penetrating gel specifically formulated to provide a clean, odourless lubricant for high-pressure and high-temperature applications.

- Penetrating gel – applied as an oil, it penetrates on application, evaporates very quickly within 5 to 10 seconds and sets as a gel-like grease
- Does not drip off for fling off at high speed
- Hot & cold wash resistant
- Ideal for highly loaded reciprocal moving parts and for general use in heavy industries, workshops, and automotive.

PACK SIZE & PART NUMBER

CRC • Aerosol 210ml - 5018 • Aerosol 500ml - 5014



Lock and Hinge Lube

CRC Lock & Hinge Lube cleans and lubricates locks, latches and hinges to ensure smooth and reliable use.

- Cleans and protects all types of lock cylinders, padlocks, latches and hinges
- Protects from rust and corrosion – to avoid future failure and expensive repairs
- Quick acting – penetrates and frees locks instantly

PACK SIZE & PART NUMBER

CRC • Aerosol 210ml - 5019



Garage Door Lube

CRC Garage Door Lube is a high performance synthetic lubricant specifically formulated for use on all garage doors and components.

- Suitable for all garage door designs and components – rolling doors, tilting doors, sectional doors, industrial rolling doors
- Eliminates squeaking and sticking – for smooth operation
- Does not attract dust or clog up tracks

PACK SIZE & PART NUMBER

CRC • Aerosol 400ml - 5015



Dry Glide

CRC Dry Glide PTFE is a technically advanced multi-purpose dry film lubricant that cures to a non-staining micro thin film.

- PTFE-based – excellent lubrication over a wide temperature range
- Bonds to most surfaces – metal, wood, rubber and most surfaces
- Ideal for lubrication in dusty environments where contaminants might interfere with conventional wet lubricants

PACK SIZE & PART NUMBER

CRC • Aerosol 150g - 3040



Dry Lube with PTFE

CRC Drylube with PTFE is a high-performance dry film lubricant that is applied wet and quickly dries to a non-staining micro-thin film of submicron PTFE particles.

- Extreme pressure lube – premium performance lubricant for heavy loads, metal-on-metal sliding on flat surfaces, open gear systems
- Dries fast – does not interrupt workflow
- Designed for applications in clean industries where the use of wet lubricants is not desirable

PACK SIZE & PART NUMBER

CRC • Aerosol 500ml - 3049



Power Lube with PTFE

CRC Powerlube with PTFE is a high performance multi-use lubricant providing long lasting protection against friction, wear and corrosion.

- Additive package with PTFE – minimises surface contact and friction to reduce wear, extend equipment life and maintain peak operating conditions
- Withstands extreme pressure – doubles the load carrying capacity and provides long lasting lubrication
- Low viscosity film

PACK SIZE & PART NUMBER

CRC • Aerosol 300g - 3045



TAG-2 Adhesive Lubricant

CRC TAG-2 is an exceptional general purpose lubricant with tough adhesive qualities.

- Excellent penetration action on application
- Evaporates quickly – 15 seconds before it sets as a tacky oily film
- Excellent resistance to fling-off at high speeds and temperatures
- Ideal for lubrication & protection of gears, sprockets, chains & sliding parts in industrial applications

PACK SIZE & PART NUMBER

CRC • Aerosol 400ml - 5035



Belt Grip

CRC Belt Grip is a synthetic polymer based formulation specially developed to meet the demand for a true industrial and automotive belt dressing.

- Tacky, non drying, water resistant film – minimises drive belt slippage, resists water wash off, maintains belt flexibility and prevents loads from slipping on conveyor systems
- Adheres strongly to any commonly used belt material
- MPI Approved C12

PACK SIZE & PART NUMBER

CRC • Aerosol 400ml - 3081



Belt Dressing

CRC Belt Dressing minimises squeals in automotive belts. Belts stay pliable without glazing or hardening, reducing squeaking noise.

- Extends the life of old and worn belts
- Acts as a conditioner
- Reduces belt tension
- Non-tacky and non-drying
- Ideal for the automotive trade

PACK SIZE & PART NUMBER

CRC • Aerosol 350g - 1753472



Chain & Wire Lubricant

CRC Chain & Wire Lubricant is specifically formulated for effective lubrication and protection of chain and wire driven equipment.

- Lubricates, cleans and protects chain driven equipment
- Foam application – for outstanding penetration and coverage
- Oily wet film to resists wash off
- Repels moisture
- Resists wash off
- Extends chain and sprocket life

PACK SIZE & PART NUMBER

CRC • Aerosol 400ml - 3360



Penetr8 Freeze Off

CRC Penetr8 Freeze Off is an industrial strength, low viscosity, rust penetrating lubricant with a unique freezing effect designed to loosen and free seized, bound or frozen fasteners quicker and more effectively than conventional penetrants.

- Extreme penetrating action – specially formulated rust penetrating lubricant, dissolving varnishes and gums
- Freezing effect – penetrates deeper and works faster
- Improves performance and operating efficiency – loosens rusted and corroded nuts, bolts, couplings, fittings, hinges and frozen components

PACK SIZE & PART NUMBER

CRC • Aerosol 400ml - 5503



Penetr8 Hi Speed Penetrant

CRC Penetr8 is an industrial strength, low viscosity lubricant and penetrant designed to quickly loosen and free seized, bound or frozen fasteners.

- Extreme penetrating action – high speed penetrant, specially formulated to penetrate rust, dissolve varnishes and gums
- Leaves a thin non-drying, colourless film with outstanding lubrication & corrosion inhibiting properties

PACK SIZE & PART NUMBER

CRC • Aerosol 210ml - 5500 • Aerosol 500ml - 5501



Copper Anti-Seize & Lubricating Compound

CRC Copper Anti-Seize and Lubricating Compound is a general purpose anti-seize lubricant that prevents seizing and galling caused by high temperatures, heavy loads, vibration and corrosion.

- Copper-based. Safe for use on both ferrous and non-ferrous metals
- High temperature resistance. Protects parts up to 982°C
- Electrically conductive. Does not insulate and interrupt current flow
- Ideal for closely fitted parts that need extreme lubrication

PACK SIZE & PART NUMBER

CRC • Tube 75ml - 3145 • Brush-top can 500ml - 3183 • Aerosol 400ml - 3195



Nickel Anti-Seize & Lubricating Compound

CRC Nickel Anti-Seize & Lubricating Compound is a nickel based lubricant that protects metal to metal applications from seizing and galling caused by high temperatures, heavy loads, vibration, chemicals and corrosion.

- For all metals, especially stainless steel
- Free of copper, lead, sulphides and chlorides
- Safe for use with most chemicals that are unstable with copper
- Extremely high temperature capabilities
- Excellent chemical resistance

PACK SIZE & PART NUMBER

CRC • Tube 75ml - 3147 • Brush-top can 500ml - 3193 • Aerosol 400ml - 3197



Wire Pulling Lube

CRC Wire Pulling Lubricant is a water-soluble polymer gel with PTFE specifically designed to facilitate smooth pulling of electrical and communications wires and cables.

- Maximum friction reduction – for long pulls and difficult pulling applications
- Safe for user and environment – non toxic, non flammable, harmless to skin on contact, biodegradable
- Compatible – to a wide range of cable jackets and conduits
- Dries to a very thin film that will ease cable removal if required

PACK SIZE & PART NUMBER

CRC • 1L - 2053 • 20L - 2055



Syntex Synthetic Oil

CRC Syntex is a synthetic multipurpose lubricant suited to both heavy and light commercial use, as well as around the home and garage.

- Extreme temperature range – effective from -40°C to +350°C
- High flash point – increased user safety
- Extreme pressure lube – TIMKEN OK load 18kg (40lb)
- Forms a colourless, odourless and tasteless film
- Will not wash off or dry out

PACK SIZE & PART NUMBER

CRC • Aerosol 400ml - 3035



Spray Applicator

Hand pump sprayer for CRC 5-56 range. Adjustable spray for mist or stream.

PACK SIZE & PART NUMBER

CRC • 500ml - 4000



Pump Spray Bottle

CRC Pump Spray Bottle is a durable, pump activated spray bottle produced specifically for the delivery of CRC products.

- Ideal for non-chlorinated 'Brakleen Fast-Dry'
- Pump action, pressurised spray bottle – for easy distribution of CRC products
- Easy to use, quality pump spray applicator

PACK SIZE & PART NUMBER

CRC • Bottle 1L - 30463



Heavy Duty Sprayer

Suitable for CRC Brakleen, CRC Brakleen Fast Dry, CRC Lectra Clean and other strong solvents.

PACK SIZE & PART NUMBER

CRC • 500ml - 4014



NEW ZEALAND'S FAVOURITE LUBRICANT



CLEANERS & DEGREASERS



Brakleen

CRC Brakleen is a powerful, heavy duty cleaner and degreaser for brake, clutch parts and general mechanical equipment.

- Original heavy duty formula
- Powerful brake cleaner and degreaser
- No disassembly required – saves time and reduces maintenance cost
- Fast evaporation brake cleaner

PACK SIZE & PART NUMBER

CRC • Aerosol 600g - 5089 • 4L - 5090



Brakleen Blaster

CRC Brakleen Blaster, the genuine Brakleen formula with a high pressure spray to forcefully cut through and remove thick build-ups, hardened deposits and to clean hard-to-reach areas.

- Extreme grease penetration power, high pressure spray
- No disassembly required
- Fast evaporation

PACK SIZE & PART NUMBER

CRC • Aerosol 600ml - 5087



Brakleen Non-Flammable

CRC Brakleen Non-Flammable is a powerful, heavy duty cleaner and degreaser for brake, clutch parts and general mechanical equipment.

- Quick cleaning, quick evaporating
- Non staining, non-corrosive, leaves no residue
- Ideal for where fire safety protection is imperative

PACK SIZE & PART NUMBER

CRC • Aerosol 550g - 5082



Brakleen Fast Dry

CRC Brakleen Fast Dry is a powerful, fast drying, non-chlorinated solvent blend with superior cleaning and degreasing properties that minimise down-time.

- Super-fast evaporating cleaner & degreaser – minimises downtime
- Advanced non-chlorinated, non-toxic formula
- High short term exposure level – ideal for use in confined spaces
- Ideal for time sensitive jobs

PACK SIZE & PART NUMBER

CRC • Aerosol 600ml - 5083 • 20L - 5092



Brakleen Non-Chlorinated

CRC Brakleen Non-Chlorinated is a powerful, heavy duty cleaner and degreaser for brake, clutch parts and general mechanical equipment.

- Ideal for use in confined spaces
- Safe for use on most automotive rubbers, plastics and paints
- Does not contain silicones or chlorinated hydrocarbons

PACK SIZE & PART NUMBER

CRC • Aerosol 525ml - 5084



Brakleen Water Based

Brakleen Water Based is a water based powerful, heavy duty cleaner and degreaser.

- Non-flammable, non-toxic, non-corrosive, solvent free, biodegradable, and non-staining
- Has no volatile organic vapours making it ideal for use in confined spaces
- Safe on rubber and most plastics
- Ideal for lighter equipment & regulatory compliance

PACK SIZE & PART NUMBER

CRC • Aerosol 500ml - 1751843



Oil Fighter

CRC Oil Fighter is a revolutionary new product, that effectively removes oil stains from porous surfaces. Effective on concrete floors and driveways, paving, cobbles, masonry, timber, heavy duty carpets and mats. Oil Fighter is ideal for all automotive, industrial and household needs.

- Removes oil and grease stains
- Rapid formula works in just 1 - 2 hours
- Simple spray on brush off formula

PACK SIZE & PART NUMBER

CRC • Aerosol 400ml - 5069



Aeroclean Degreaser

CRC Aeroclean Degreaser delivers a concentrated jet of cleaning solution that dissolves and removes oil and grease from dirty engines.

- Restores & enhances the appearance of your engine
- Can also be used to safely clean concrete floors and driveways
- Non-corrosive
- MPI approved C12

PACK SIZE & PART NUMBER

CRC • Aerosol 500ml - 5070



XD8 Ultra HD Cleaner & Degreaser

CRC XD8 is an industrial strength citrus-based cleaner and degreaser formulated for powerful natural cleaning in industrial applications.

- Natural d-Limonene active ingredients
- Readily biodegradable per OECD 301B
- No harmful fumes
- Non-corrosive

PACK SIZE & PART NUMBER

CRC • Aerosol 500ml - 3076



Electrical Parts Cleaner

CRC Electrical Parts Cleaner is a quick-drying, non-chlorinated evaporating parts cleaner for use on electric motors and other heavy-duty electrical and mechanical equipment.

- Safe on most plastics
- Rapid and complete evaporation – leaves no residue, no rinsing or wiping required
- Quickly penetrates into hard-to-reach areas

PACK SIZE & PART NUMBER

CRC • Aerosol 400g - 2019



Auto Electronic Cleaner

CRC Auto Electronic Cleaner is an inert high purity cleaning solvent formulated for use on precision instruments, equipment and components. It removes dirt, tarnish, dust, grease, oil and other deposits preventing arcing between dry contacts.

- Leaves no residue
- Fast drying
- Safe on plastic and rubber
- Non conductive

PACK SIZE & PART NUMBER

CRC • Aerosol 400ml - 5013



PF Precision Cleaner

PF Precision Cleaner's unique blend offers strong cleaning action, fast evaporation and no residue. It has no flash point and is safe to use on plastics.

- Plastic safe
- Very fast evaporation for less down time
- Ideal for electrical contacts, printed circuit boards, and other electronic and electrical equipment

PACK SIZE & PART NUMBER

CRC • Aerosol 400ml - 2143



CO Contact Cleaner

CRC CO Contact Cleaner is a plastic-safe general-purpose evaporating cleaner and degreaser for use on sensitive electronic and electrical equipment.

- Safe for use on most plastics
- Quickly penetrates into hard-to-reach areas
- Rapid and complete evaporation – leaves no residue, no rinsing or wiping required
- Low in toxicity
- MPI approved C12

PACK SIZE & PART NUMBER

CRC • Aerosol 210ml - 2015 • Aerosol 500ml - 2016



Lectra Clean

CRC Lectra Clean is a non-flammable heavy-duty evaporating cleaner and degreaser for use on electric motors and other heavy-duty electrical and mechanical equipment.

- Non-flammable, no flash point
- Can be used on energised equipment – minimises downtime, spray on while in use
- Rapid and complete evaporation – leaves no residue, no rinsing or wiping required

PACK SIZE & PART NUMBER

CRC • Aerosol 400ml - 2018



Exoff Degreaser & Parts Cleaner

Next generation high performance cleaning technology formulated to penetrate & dissolve tough grease, oil and contaminants for easy removal – safely. For use in heavy industry, automotive and service applications, workshops and garages.

- Powerful, non-toxic, non-corrosive, non-flammable and pH neutral
- Contains rust inhibitors
- Use confidently on all metals and alloys - will not damage bright metals including aluminium and brass
- Safe on fibreglass, glass, plastics, rubber, painted surfaces, laminates

PACK SIZE & PART NUMBER

CRC • 750ml - 3410 • 5L - 3412 • 20L - 3413 • 200L - 3414



Peel Off Label Remover

CRC Peel Off uses the natural power of d-Limonene to soak through paper labels and release adhesive backings. CRC Peel Off can also be used to clean off cured adhesive and to remove industrial ink from machinery.

- Cleans off cured adhesives
- Cleans industrial inks off machinery
- MPI Approved C101-83

PACK SIZE & PART NUMBER

CRC • Aerosol 400ml - 3352



Surface Cleaner and Sanitiser

CRC Surface Cleaner & Sanitiser is a ready to use industrial strength foaming surface cleaner and sanitiser that cleans, disinfects, and deodorises in one easy step. Use confidently on all surfaces, around the workshop, factory, office or home.

- Kills 99.9% of germs
- Starts working on contact
- Multi surface protection
- The foaming action, non-drip formula is ideal for vertical or inverted surfaces

PACK SIZE & PART NUMBER

CRC • Aerosol 530ml - 1752196



Surface Sanitiser Fragrance Free

CRC Surface Sanitiser Fragrance Free is an industrial strength sanitiser, fragrance free. Safe in food processing areas.

- Kills 99.9% of germs
- Contains Ethyl Alcohol 70%
- Leaves surfaces hygienically clean and conditioned
- MPI Approved C43 (all animal products including dairy)
- No rinse sanitiser in fish processing areas
- Fast acting sanitiser with no wiping needed
- Works on hard & soft surfaces

PACK SIZE & PART NUMBER

CRC • Aerosol 400ml - 1752195



Surface Sanitiser Aerosol

CRC Surface Sanitiser is a versatile sanitiser that effectively kills bacteria and microbes leaving surfaces hygienically clean.

- Kills 99.9% of germs
- Starts working on contact
- Multi-surface protection
- Contains 70% Isopropyl Alcohol

PACK SIZE & PART NUMBER

CRC • Aerosol 250g - 1752084



Fogger Sanitiser

CRC Fogger Sanitiser is an industrial strength sanitiser fogger that effectively kills germs in all the hard-to-reach spots conventional cleaning techniques miss.

- Kills 99.9% of germs
- One step application will sanitise an entire room or commercial vehicle - walls, ceiling, floor, every nook and cranny
- Covers large areas - approximately 90m³. This equates to a 35m² floor area assuming a 2.4m ceiling height

PACK SIZE & PART NUMBER

CRC • Aerosol 210ml - 1752197



Surface Sanitiser

CRC Surface Sanitiser is a ready to use surface sanitiser. It offers effective multi-surface performance across most hard and soft surfaces in commercial and residential buildings.

- Kills 99.9% of germs
- Provides long lasting residual protection
- Ready to use, no mixing required
- Alcohol free

PACK SIZE & PART NUMBER

CRC • 500ml - 1752080 • 5L - 1752089



Clene Up Fast Acting

CRC Clene Up Fast Acting quickly and safely kills and removes algae, fungi, lichen, grime, mould, moss and mildew from all surfaces around the house and garden.

- Outdoor cleaning solution
- Kills spores and prevents unwanted biological regrowth for up to 12 months
- Spray it on, let it work, and then hose it off
- Non-toxic

PACK SIZE & PART NUMBER

CRC • 5L - 5903



Mechanix Orange Hand Cleaner

CRC Mechanix Orange Hand Cleaner is a powerful citrus-based hand cleaner formulated with natural d-Limonene for quick and effective removal of toughest soils.

- Powerful natural citrus cleaning
- Safe biodegradable formula, pH balanced, contains no harsh solvent
- Quickly and effectively removes toughest soils - dirt, oil, grease, tar, ink, paint
- Fortified with fine-grade pumice

PACK SIZE & PART NUMBER

CRC • 400ml - 1712 • 4L - 1719



Hand Cleaner Towels

CRC Hand Cleaner Towels are textured heavy-duty towels saturated with a powerful, yet gentle citrus-based cleaner for cleaning hands away from a sink and water.

- Pre-moistened heavy duty towel with pumice scrubbing power
- Works fast to loosen, dissolve and absorb dirt and grease easily
- Fortified with emollients to protect skin

PACK SIZE & PART NUMBER

CRC • 72 Pack - 4100



WattsUp Solar Panel Cleaner

CRC WattsUp™ Solar Panel Cleaner is a concentrate formula and effectively removes contaminants from solar panels. Easy to use once diluted, it can be sprayed through a trigger bottle or pressure washer.

- Restores photovoltaic efficiency to maximise solar panel output
- Effectively removes bird droppings, dust, dirt, pollen, salt spray and more
- Non-corrosive and contains no solvents
- Ant-static properties
- 1L: makes up to 31L, cleans up to 125* panels
- 5L: makes up to 155L, cleans up to 625* panels

*Result may vary depending on conditions, levels of contamination and dilution rates.

PACK SIZE & PART NUMBER

CRC • Jerry 1L - 1754785 • Jerry 5L - 1753427

WHAT

WHAT IS IT?

- WattsUp™ Solar Panel Cleaner effectively removes contaminants from solar panels, maximising power generation
- It is non-corrosive and contains no solvents

WHY

WHY IS IT IMPORTANT TO CLEAN YOUR SOLAR PANEL REGULARLY?

- Cleaning solar panels is just as important as how they were installed
- Cleaning your panels will increase their overall efficiency
- If solar panels are not maintained as they deserve, it could lead to a loss of energy, efficiency, and money

HOW

HOW DOES CRC'S WATTSUP™ SOLAR PANEL CLEANER HELP?

- Restores photovoltaic efficiency to maximise solar panel output
- Effectively removes bird droppings, dust, dirt, salt spray, and more
- Anti-static properties keep panels clean for longer





CORROSION PROTECTION



Rust Converter

CRC Rust Converter is a unique fast drying coating formulated for treatment of lightly rusted or correctly prepared metal surfaces.

- Ready to use – no additional mixing or chemical additives required
- One easy step – instantly neutralises rust and converts it to a tough black primer
- Long-lasting protection
- Can be painted over
- Seals out moisture

PACK SIZE & PART NUMBER

CRC • 250ml - 3073 • Aerosol 425g - 14610 • 1L - 18418 • 5L - 3075



Metal Armour

CRC Metal Armour is a zinc rich primer and sealer. It is a versatile and unique formulation that bonds directly to bare metal or most surfaces, including painted surfaces.

- Contains 85% zinc in dry film
- Durable coating
- Superior Adhesion - prevents the coating from peeling or flaking over time
- Ready to paint or leave uncoated
- Long term corrosion protection
- Ideal for interior and external applications

PACK SIZE & PART NUMBER

CRC • Aerosol 350g - 1754703 • 1L Tin - 1754729



Etch It - Etch Primer

CRC Etch It is a single pack etch primer with excellent adhesion to bare metal. It is formulated for etching and key-coating bare aluminium, stainless steel, brass, copper and galvanised metal surfaces.

- Provides adhesion for painting aluminium, stainless steel, brass, copper and galvanised iron
- Tough durable film
- Fast drying
- MPI approved C23

PACK SIZE & PART NUMBER

CRC • Aerosol 400ml - 2110



Prep It - Sanding Primer

CRC Prep It is a single pack high build easy-sanding metal primer with a grey finish. Inhibits corrosion and forms a quick drying protective coating.

- High build, easy sanding – ideal as primer coat over bare metal or intermediate coat
- Zinc enriched for corrosion protection
- Excellent adhesion to bare metal
- MPI Approved C23

PACK SIZE & PART NUMBER

CRC • Aerosol 400ml - 2114



Prime It - Red Oxide Primer

CRC Prime It - Red Oxide Primer is a single pack penetrating shop primer with high levels of anti-corrosive zinc complexes.

- Zinc enriched for corrosion protection – high levels of anti-corrosive zinc complexes
- Long-term protection – up to 3 years outdoors before overcoating or recoating with CRC Prime It is necessary, depending on conditions
- Scratch resistant, durable – withstands harsh outdoor conditions
- MPI approved C23

PACK SIZE & PART NUMBER

CRC • Aerosol 400ml - 2091



Zinc It

CRC Zinc It is a weld through single component zinc-rich compound that offers the same advantages as hot-dip galvanising by forming a highly-protective coating with 95% highest purity zinc on bare steel or iron surfaces.

- Weld through - Zinc It provides a unique coating that can be welded through
- Fast drying
- Easy application
- Long-term corrosion protection
- MPI Approved C23

PACK SIZE & PART NUMBER

CRC • Aerosol 350g - 2085 • Aerosol 500g - 2125 • 1L - 2185



Zinc Blaster

CRC Zinc Blaster is a Zinc-rich, wide-coverage, long-reach spray formulated to quickly provide powerful protection against rust and corrosion with a rapidly drying finish, that matches the look of galvanised steel.

- Long reach - up to 1 meter
- Wide coverage spray
- Powerful, unique nozzle enables large area coverage
- Can be easily applied in hard to reach areas
- Zinc-rich coating – powerful protection against rust and corrosion

PACK SIZE & PART NUMBER

CRC • Aerosol 500ml - 2130



Black Zinc

CRC Black Zinc's unique formulation combines superior rust inhibiting properties of zinc with a tough but flexible enamel coating and a black satin finish.

- Ideal for outdoor protection of metals against rust
- Can be used directly on bare metal for touch-up or coating
- Scratch & solvent resistant
- Long-term corrosion protection
- MPI Approved C23
- Black satin finish

PACK SIZE & PART NUMBER

CRC • Aerosol 400ml - 2089 • Aerosol 500ml - 2129 • 1L - 2189



Coloured Zincs

CRC Coloured Zinc's unique formulation combines superior rust inhibiting properties of zinc with a tough but flexible enamel coating and a coloured satin finish.

- Zinc enriched for corrosion protection – high levels of anti-corrosive zinc complexes in the dried film, embedded in a protective enamel coating
- Satin finish – available in seven colours
- Safety – colours conform to British Safety Colour standards
- MPI approved C23

PACK SIZE & PART NUMBER

CRC Aerosol 400ml: • White - 2090 • Green - 2096 • Blue - 2097 • Yellow - 2098 • Red - 2100 • Orange - 2101



Stainless Steel + Zinc

CRC Stainless Steel+Zinc's unique formulation combines superior rust inhibiting properties of zinc with a tough but flexible enamel coating for heavy-duty protection and a hard-wearing stainless steel finish.

- Zinc-rich – more than 50% highest purity zinc in the dried film, embedded in a protective enamel coating
- Contains stainless steel – for durable stainless steel finish, no need for top-coating
- Protective coating – resistant to salt corrosion, water and heat, powerful protection in harsh conditions
- MPI approved C23

PACK SIZE & PART NUMBER

CRC • Aerosol 400ml - 2092



Clear Zinc

CRC Clear Zinc is an easy to use, long lasting, high performance protective clear coating that can be applied to almost any surface.

- Seals surface with an impact resistant, smooth, clear and high gloss finish.
- Provides protection from damaging UV light.
- Highly corrosion resistant
- Prevents rust, oxidation, corrosion, staining and fading for up to 27 months
- Fast drying

PACK SIZE & PART NUMBER

CRC • Aerosol 400ml - 2102



Bright Zinc

CRC Bright Zinc's unique formulation combines superior rust inhibiting properties of zinc with a tough but flexible resin coating for heavy-duty protection and a bright finish of new galvanising.

- Zinc-rich – more than 50% highest purity zinc in the dried film, embedded in a protective enamel coating
- Protective coating – resistant to salt corrosion, water and heat, powerful protection in harsh conditions
- Bright galvanised finish – ideal for repairing damaged galvanised surfaces to restore rust protection
- MPI Approved C23

PACK SIZE & PART NUMBER

CRC • Aerosol 400ml - 2087 • 1L - 2187



Galv Touch Up

CRC Galv Touch Up is a bright silver, fast drying, aluminium rich, corrosion resistant coating for hot-dip galvanised steel and other metal applications such as zinc and aluminium alloys.

- Colour matched to new galvanised steel
- Durable epoxy coating
- Fast drying, ready to use, bright silver paint
- Long term protection

PACK SIZE & PART NUMBER

CRC • Aerosol 400ml - 2083



LanoCote Natural

CRC LanoCote Natural is an environmentally friendly product with superior corrosion protection and anti-seize properties.

- Environmentally friendly – blended from natural and non-toxic ingredients, biodegradable, pleasant natural odour
- Safe – non-toxic, non-carcinogenic
- Harmless to material – does not harm metals, plastics, paints, fiberglass, rubber, neoprene, formica and other synthetic materials
- MPI approved C14

PACK SIZE & PART NUMBER

CRC • 250ml - 3220 • 500ml - 3222 • Aerosol 500ml - 3020



Soft Seal

CRC Soft Seal provides a dry transparent, amber waxy film for heavy protection of parts that will not wash or wipe off even in severe conditions.

- Seals out moisture and corrosive contaminants
- Never becomes brittle and will not crack
- Ideal for indoor/outdoor machined surfaces & assemblies subjected to long periods of storage or adverse shipping conditions

PACK SIZE & PART NUMBER

CRC • Aerosol 400ml - 3013 • 4L - 3014



Long Life Anti Rust

CRC Long Life Anti Rust provides superior lubrication & long term rust prevention to all metals subjected to rust & salt corrosion.

- Protect tools, machinery and general equipment over long periods of downtime
- Preserves engine blocks, pistons and components from atmospheric rusting
- Excellent rust inhibitor
- MPI approved C12

PACK SIZE & PART NUMBER

CRC • Aerosol 300g - 3097 • 4L - 3098



Brush-On Underbody Seal

CRC Brush-On Underbody Seal gives protection against corrosion and stone chips while insulating against drumming and road noise.

- Ideal for under guards, door sills, chassis & fuel tanks
- To reduce drumming and road noise, Underbody Seal should also be applied to the inside door panels
- Do not apply to internal floor structures
- Non-drip and easy to apply

PACK SIZE & PART NUMBER

CRC • 1L - 7234 • 4L - 7236



Spray-On Mineral Underbody Seal

CRC Spray On Mineral Underbody Seal is an extremely tough, flexible rubberized coating that insulates against drumming & road noise while preventing the development of rust.

- Resists stone chipping & corrosion
- Insulates against drumming and road noise
- Prevents rust
- Spray on application method

PACK SIZE & PART NUMBER

CRC • 1L - 7224 • 4L - 7226



Proseal Underbody Rubberised Coating

CRC Proseal Underbody Rubberised Coating is a professional grade, bituminous based formulation that forms a durable, waterproof protective coating.

- Protects against rust, corrosion, moisture, heat and cold
- High resistance to abrasion
- Insulates against road noise, and seals out fumes, dust and moisture
- Does not drip, run or sag

PACK SIZE & PART NUMBER

CRC • Aerosol 500ml - 5121



Red Urethane Seal Coat

CRC Red Urethane Seal Coat provides a stable single component polyurethane coating for electrical and electronic applications.

- High di-electric strength – ideal for electrical/electronics applications
- Environmental and mechanical protection – to significantly extend product life
- Fast drying
- Forms a hard, durable, flexible & non-conductive film
- Ideal for electrical motor windings & armature coils
- Corrosion resistance - up to 2 years

PACK SIZE & PART NUMBER

CRC • Aerosol 300g - 2044



Clear Urethane Seal Coat

CRC Clear Urethane Seal Coat provides a stable single component polyurethane coating for electrical and electronic applications.

- High di-electric strength – ideal for electrical/electronics applications
- Environmental and mechanical protection – to significantly extend product life
- Fast drying
- Corrosion resistance - up to 2 years

PACK SIZE & PART NUMBER

CRC • Aerosol 300g - 2049



Tackle Guard

CRC Tackle Guard is specifically formulated to keep fishing tackle safe from corrosion. It cleans, lubricates, drives out moisture, prevents corrosion and protects tackle even through periods of storage.

- Fights corrosion – protects all metal reel parts, terminal tackle, rod guides and knives from corrosion
- Lubricates – protects and lubricates all types of fresh and salt water reels
- Braid, nylon and mono fishing line safe formula – will not damage monofilament, braids, kevlar, polypropylene, EVA grips, seals, etc

PACK SIZE & PART NUMBER

CRC • Aerosol 130ml - 6028



Salt Terminator

CRC Salt Terminator Engine Flush, Cleaner & Corrosion Inhibitor cleans & protects anything exposed to salt.

- Biodegradable formula
- Non-toxic
- Environment friendly
- Safe to use on any surface exposed to salt
- No scrubbing required

PACK SIZE & PART NUMBER

CRC • 3.7L - SX128 • 946ml - SX32 • 946ml W/Mixer - SX32M



Evapo-Rust®

Evapo-Rust® is a reusable, powerful, non-toxic rust remover for fast and effective restoration with no scrubbing or sanding required.

- Non-caustic & non-corrosive
- No fumes or bad odours, non-flammable, no VOC's
- Will not harm unrusted steel, safe on other metals
- Will not affect plastic, PVC, Viton and non-oxide-based paints

PACK SIZE & PART NUMBER

CRC • Jerry 1L - EVR1 • Jerry 5L - EVR5 • Jerry 20L - EVR20



Evapo-Rust® Spray Gel


Evapo-Rust® Spray Gel clings to surfaces to effectively remove rust on all types of mild steel and iron, without the need to soak.

- Non-flammable, non-toxic, non-caustic & non-corrosive
- Powerful heavy-duty formula for even the toughest rust
- Will not affect plastic, PVC, Viton and non-oxide-based paints
- Ideal for vertical rusted surfaces & rusted items too large to dip

PACK SIZE & PART NUMBER

CRC • Aerosol 500g - 1753336



| <h3>SPRAY GEL</h3> <p>1753336 500g</p> | <h3>READY TO USE</h3> <p>EVR1 1L</p> | <h3>READY TO USE</h3> <p>EVR5 5L</p> | <h3>READY TO USE</h3> <p>EVR20 20L</p> |
|--|--|--|--|
| <ul style="list-style-type: none"> • Clings to surfaces to effectively remove rust on all types of mild steel and iron, without the need to soak • Non-flammable, non-toxic, non-caustic & non-corrosive • Powerful heavy-duty formula for even the toughest rust • Will not affect plastic, PVC, Viton and non-oxide-based paints | <ul style="list-style-type: none"> • Non-toxic, non-caustic & non-corrosive • Powerful heavy-duty formula for even the toughest rust • Reusable with long lasting efficacy • No fumes or bad odours, non-flammable • Will not harm unrusted steel, safe on other metals • Will not affect plastic, PVC, Viton and non-oxide-based paints • Just soak, rinse, & reuse! | | |
| <p>Ideal for Vertical rusted surfaces & Rusted items too large to dip</p> | <p>Ideal for Tools, Hardware, Equipment, Auto Parts, Cookware, Cast Iron and More...</p> |  | <p>Ideal for Bulk applications, Corrosion bath, Engine blocks, Industrial tow bar, Engine gear & any large automotive and industrial components.</p> <p><i>More about the product scan the QR code!</i></p> |

NEW



METAL ARMOUR™

- Zinc Rich Primer and Sealer
- Contains 85% zinc in dry film
- Bonds directly to bare metal or most surfaces, including painted surfaces
- Ready to paint or leave uncoated
- Ideal for interior and external applications
- Long term corrosion protection
- Ideal for use after rust treatment including CRC Rust Converter



USE ON

Cars, Trucks, Boats, Trailers, Iron or Steel, Equipment and Tools, Railings and Fences.
(Anything that requires painting post rust treatment)



COVERAGE

- **350g Aerosol** - approximately 2sqm
- **1L Tin** - approximately 6sqm



DRYING TIME

- Touch dry in 10-20 minutes
- Recoat/overcoat after 15 minutes
- Fully cured in 24 hours





PAINTS

Paint It



CRC Paint It is a quick-drying enamel paint with a superb finish for general use. It provides excellent coverage and dries to a durable tough petrol-resistant coating to protect metal and other surfaces.

- Quick-drying enamel paint – touch dry in 15 minutes
- Top quality hardened enamel finish – scratch and solvent resistant
- Recommended for interior and exterior use – on wood, bare metal, plaster, masonry, glass

PACK SIZE & PART NUMBER

CRC Aerosol 400 ml: • Safety Orange - 3371 • Forest Green - 3373 • Ocean Blue - 3374 • Black Gloss - 3377 • White Gloss - 3380 • Machinery Grey - 3375 • Bright Red - 3370 • Black Satin - 3378 • Silver - 3376 • Black Matt - 3379 • Golden Yellow - 3372

Paint Marker Pens



CRC Paint Marker Pens are paint pens that use a solvent-based paint formula for durable marking on multiple surfaces in all weather conditions. Ideal product for every toolbox.

- Excellent coverage – even on black, transparent or very glossy surfaces. Suitable for use on damp or rusted surfaces
- Fast drying – for efficient workflow
- Durable tip with valve action – to prevent an excess of paint flow

PACK SIZE & PART NUMBER

CRC • Silver - 20392 • Orange - 20384 • Red - 20388 • Green - 20380 • Black - 20365 • Blue - 20369 • Yellow - 20400 • White - 20395

Quicksilver Paint



CRC Quicksilver is a quick drying, silver enamel paint with a quality finish for general use. It provides excellent coverage and dries to a hard wearing finish.

- Quick dry enamel paint
- Superb Finish
- Cost effective
- Ideal for interior and exterior use on most surfaces including metal, plaster and masonry
- For use on garage projects, automotive applications etc

PACK SIZE & PART NUMBER

CRC • Aerosol 400ml - 5117

Hot Black/Silver



CRC Hot Black and CRC Hot Silver are single pack silicone-based high-temperature spray paints that rapidly cure to a durable heat and flame resistant protective coating for metal surfaces.

- Heat & flame resistant – withstands temperatures up to 650°C
- Protective coating – resistant to abrasion once cured
- Provides excellent colour retention & film integrity
- Single coat, primer-less, fast drying

PACK SIZE & PART NUMBER

CRC Aerosol 400ml: • Black 400ml - 5131 • Silver 400ml - 5132

Fire Paint



CRC Fire Paint is a single pack high temperature silicone based paint that rapidly cures to a durable heat and flame resistant protective coating for metal surfaces.

- Heat & flame resistant – withstands temperatures up to 650°C
- Protective coating – resistant to abrasion once cured
- Provides excellent colour retention & film integrity
- Applied over bare metal or existing high temperature paint systems
- Black stain finish

PACK SIZE & PART NUMBER

CRC • Aerosol 400ml - 5135

Black It



CRC Black It is a quick drying single pack enamel paint with a superb finish for general use.

- Ready to use aerosol – no additional mixing or chemical additives required. Easy application. No clean up
- Tough, durable coat – scratch and solvent resistant
- Single coat, fast drying – convenient, reduces downtime
- Top quality finish

PACK SIZE & PART NUMBER

CRC Aerosol 400ml: • Matt - 5110 • Gloss - 5111 • Satin - 5112

Strip-Off Paint Stripper



CRC Strip-Off Paint Stripper is a fast aerosol paint stripper which removes paint and varnish from most types of surfaces including paintbrushes.

- Easy to use
- No mess aerosol application for improved user safety
- Saves on brushes and containers

PACK SIZE & PART NUMBER

CRC • Aerosol 550ml - 5115

Grouch Graffiti Remover



CRC Grouch is a powerful graffiti remover that quickly removes vandalism marks from property.

- Rapid and effective removal of graffiti
- Softens and removes dried adhesives
- Heavy duty, safe, and non-toxic formula
- Gel formula clings to vertical surfaces

PACK SIZE & PART NUMBER

CRC • Aerosol 500ml - 5116



SPECIALTY PRODUCTS



GDТ Cutting Liquid

CRC GDТ Cutting compounds are superior neat cutting, drilling tapping, and reaming lubricants, formulated for hand and machine cutting on all types of metal.

- Contains high performance, extreme pressure additives
- Provides very high resistance to temperature, pressure and wear
- Enhances tool, mandrel and die life - reduces tooling and production costs
- Significantly reduces friction and wear, increasing cutting speeds
- MPI Approved C12 (all animal product except dairy)

PACK SIZE & PART NUMBER

- Liquid 250ml - 3059 • Liquid 500ml - 3064 • Liquid 5L - 3068
- Paste 250ml - 3061 • Paste 500ml - 3062 • Oil Aerosol 400ml - 3063



Treflex ' Magic' Cutting Compound

CRC Treflex 'Magic' Cutting Compound provides continuous lubrication throughout low speed cutting operations.

- For clean threads and no tearing
- Significantly increases tool life and thread quality
- Does not run off or evaporate
- For use with hand tools and slow cutting operations
- Suitable for steel, aluminium, copper, brass, stainless steel

PACK SIZE & PART NUMBER

- 500ml - 3060



Smoke Test

CRC Smoke Test® simulates smoke to conveniently test the complete functional ability of commercial and residential smoke detectors.

- Simulates smoke – provides a true, functional test for commercial and residential smoke detectors
- Aerosol extends user reach up to 120cm – allows testing to be done while standing safely on the floor
- Smokeless aerosol – detectors will remain in proper working order after each test without build-up of carbon residue

PACK SIZE & PART NUMBER

- Aerosol 71g - 2105



Aqua Armour Water Repellent

CRC Aqua Armour is a high-strength, multi-purpose water repellent, providing long-lasting waterproofing for outdoor applications and fabrics.

- High-strength waterproofing
- Long-lasting protective barrier
- Allows fabric to breathe
- Keeps moisture out while leaving no stickiness, discolouration or stiffness

PACK SIZE & PART NUMBER

- Aerosol 500ml - 5033



Leak Detector

CRC Leak Detector is formulated for the quick and easy site detection of gas and air leaks.

- Finds leaks fast – highlights all leaks, even under low pressure
- Aerosol package – enables fast and easy application with no waste or spillage
- Water-based formula – no oils, silicones or harmful solvents
- Non-flammable

PACK SIZE & PART NUMBER

- Aerosol 510g - 14503



Freeze Spray

CRC Freeze Spray is a multi-purpose freezing agent for maintenance, trouble shooting and repair – a handy tool for use in electronics, engineering, automotive and more.

- Aids in the assembly of close tolerance or interference fit configurations
- Isolates circuits to assist with immediate fault finding or heat induced failures
- Pure formulation – dries instantly, leaves no residue, non-abrasive
- Non-flammable
- MPI approved C22

PACK SIZE & PART NUMBER

- Aerosol 300g - 2072



Air Brush 360

CRC Air Brush 360 is the latest evolution in our dust removal products.

- Non-flammable
- 360° spray system allows it to be sprayed at any angle, perfect for getting into hard to reach places
- Non-abrasive, non-corrosive, moisture-free, leaves no residue
- MPI approved C22

PACK SIZE & PART NUMBER

- Aerosol 300g - 2070



Duster

CRC Duster is an air duster that easily blows away dust and lint from hard to reach and delicate places using a powerful burst of compressed air.

- Delivers a powerful burst of propellant
- 360° Spray system allows it to be sprayed at any angle, perfect for getting into hard to reach places
- Ideal for delicate and hard to reach places
- MPI C22 approved

PACK SIZE & PART NUMBER

- Aerosol 250ml - 2071

WELD-AID® Nozzle-Dip Hd® Anti-Spatter Dip Gel



The leading water-based gel. Weld-Aid Nozzle-Dip HD Anti-Spatter Dip Gel is engineered to reduce spatter build-up on nozzles, tips and diffusers resulting in longer equipment life.

- Reduces spatter build-up on nozzles and tips
- Excellent cooling properties for longer tip and nozzle life
- Can dip hot or cold, gel will not migrate into liner
- Non-toxic

PACK SIZE & PART NUMBER

CRC • 16oz - 17095 • 32oz - 17094

WELD-AID® Nozzle-Kleen® #2 Anti-Spatter



Weld-Aid Nozzle-Kleen #2® Anti-Spatter is the highest quality anti-spatter for most applications.

- Non-flammable
- Paintable
- No fluorocarbons

PACK SIZE & PART NUMBER

CRC • Aerosol 16oz - 17022

WELD-AID® Weld-Kleen Hd® Anti-Spatter



Weld-Aid WELD-KLEEN HD® Anti-Spatter is a heavy duty base metal treatment that is solvent based and quick drying.

- Accepts pre-heating
- Non-flammable
- Paintable spray

PACK SIZE & PART NUMBER

CRC • Aerosol 20oz - 17030

WELD-AID® Weld-Kleen® 350 Anti-Spatter



A safe, effective water-based product designed for use on most base metal applications. Used by leading manufacturers, effective for use in robot torch blow down systems.

- Economical and safe
- Biodegradable
- Non-toxic
- Paintable

PACK SIZE & PART NUMBER

CRC • 32oz - 17089 • 1gal - 17090 • 5gal - 17091 • 55gal - 17092

WELD-AID® Lube-Matic® Red Cleaning Pad



Red Kleener pads for all wires, all the time.

- Excellent for aluminum
- Reduce burnback by 50%

PACK SIZE & PART NUMBER

CRC • 6 Pack - 17061

WELD-AID® Lube-Matic® Black Pre-Treated Lube Pad



Lubrication allows smooth feeding of wire with poor cast, helix, rust and long feed liners

- For all types of steel wire (not recommended for aluminum)
- Pre-treated with Lube-Matic® liquid

PACK SIZE & PART NUMBER

CRC • 6 Pack - 17060

WELD-AID® Lube-Matic® Wire Kleener & Lubricant



Engineered to help feed fabricated and mild steel wires. Apply as needed to Lube-Matic® Kleener Pads (17060).

- Reduces wire drag by 60%.
- Decreases downtime due to jamming

PACK SIZE & PART NUMBER

CRC • 5oz - 17040

Weld Anti-Spatter Water Based



CRC Weld Anti-Spatter WB is a heavy duty, non-flammable, water based lubricant that has been specially formulated with a blend of release agents to prevent welding spatter from permanently adhering to surrounding metal surfaces.

- Solvent free
- Non-flammable
- Water based, water soluble
- Quick application
- MPI Approved C12 (all animal product except dairy)

PACK SIZE & PART NUMBER

CRC • Aerosol 400ml - 3559



Weld Anti-Spatter

CRC Weld Anti-Spatter lubricant to prevent welding spatter from permanently adhering to surrounding metal surfaces.

- Easy removal of welding spatter
- Suitable on steel, stainless steel, aluminium and some alloys
- Non-flammable – for increased user safety
- Contains no silicone - prevents interference with post-weld coatings
- MPI Approved C12 (all animal product except dairy)

PACK SIZE & PART NUMBER

CRC • Aerosol 400ml - 3358



Coil Cleaner Pro

CRC Coil Cleaner Pro is an industrial strength foaming coil cleaner. It effectively dissolves grease, oil and sludge from air conditioning and refrigeration coils. It is suitable for both evaporator and condenser coils. It does not require rinsing from evaporator coil cleaning applications.

- Industrial strength
- Low odour
- Water based
- Non-solvent, non-caustic, non-acidic
- For use on HVAC+R coils
- Suitable for air conditioning and refrigeration coils, filters, fan blades and blower wheels

PACK SIZE & PART NUMBER

CRC • Aerosol 550ml - 1752427 • Jerry 5L - 1752428



HVAC Leak Detector Pro

CRC HVAC Leak Detector is formulated to quickly and easily detect any gas or air leaks. It quickly and reliably locates leaks by forming visible bubbles when applied over any leak.

- Non-flammable
- No odour
- Water based
- Contains no oils, silicones, or harmful solvents

PACK SIZE & PART NUMBER

CRC • Aerosol 510g - 1752429



Auto AC Pro Cleaner

CRC Auto AC Pro Cleaner cleans and sanitises automotive air conditioning systems. The easy-to-use hose applicator gets deep into the AC system allowing for thorough cleaning of both commercial and passenger vehicles.

- Cleans & Sanitises AC systems
- Foaming formulation gets deep into the system for a thorough clean
- Destroys mold & Bacteria
- Eliminates Odours
- Fresh citrus scent

PACK SIZE & PART NUMBER

CRC • Aerosol 500ml - 1753204



AUTO AC PRO CLEANER



Professionally cleans auto air conditioners

- Cleans & sanitises AC systems
- Destroys mold & bacteria
- Long lasting protection
- Eliminates odours

More about the product
scan the QR code!





GREASES



Silicone Grease

CRC Silicone Grease is a thin, non-curing silicone grease designed for sealing, lubricating, and waterproofing o-rings and other rubber and plastic parts.

- Seals, lubricates, protects, insulates and waterproofs
- Temperature resistant – maintains performance level year round. Will not harden, freeze, dry or melt due to temperature fluctuations
- Safe on most rubber and plastics – will not degrade seals, gaskets or plastic insulators

PACK SIZE & PART NUMBER

CRC • Tube 75ml - 3036



White Lithium Grease

CRC White Lithium Grease is a high-purity white lithium-based grease with an advanced additive package for long lasting lubrication, excellent water and heat resistance, corrosion protection, and film strength.

- Heavy duty metal lubrication
- Aerosol – easy application, ideal for hard-to-reach areas
- Rust & oxidation inhibitors – for superior metal protection
- Temperature range – effective from -18°C to +150°C

PACK SIZE & PART NUMBER

CRC • Aerosol 400ml - 5037



Red Lithium Grease

CRC Red Lithium Grease is a multi-purpose, red lithium complex grease. It is a highly versatile grease for use in both automotive and industrial settings. Offers long lasting lubricating protection, ensuring a smooth controlled actuation over extended periods.

- Excellent Adhesion - Resists Sling-Off
- Highly resistant to moisture, water and detergent – Will not wash off when equipment is cleaned
- Protects against rust and corrosion
- Wide Temperature Range – Effective from -35°C to +149°C

PACK SIZE & PART NUMBER

CRC • Cartridge 450g - 1753203



Red Lithium Grease

CRC Red Lithium Grease is a multi-purpose, red lithium complex grease. It is a highly versatile grease for use in both automotive and industrial settings. Offers long lasting lubricating protection, ensuring a smooth controlled actuation over extended periods.

- Heavy-duty metal lubrication
- Aerosol - easy application, ideal for hard-to-reach areas
- Water and corrosion resistant
- Formulated with anti-oxidation, anti-rust, and anti-wear additives
- Temperature Range – Effective from -18°C to +150°C

PACK SIZE & PART NUMBER

CRC • Aerosol 300g - 1753266



Sta-Lube® Marine Grease

Sta-Lube® Marine Grease is a tacky blue grease specially formulated for use on boat trailers and other marine equipment.

- Resists water wash out – ideal for boat trailers and other marine equipment
- Corrosion protection – protects from salt air and water and other corrosive conditions
- Provides superior adhesion and excellent water shedding properties

PACK SIZE & PART NUMBER

CRC • 397g - 3121



Dielectric Grease Select-A-Bead

CRC Dielectric Grease Select-A-Bead is a pressurised, non-curing silicone compound used for electrical sealing, lubricating, protecting and insulating.

- Ready to use - no additional mixing or chemical additives required.
- Maximum protection from corrosion – seals connectors exposed to the elements
- Silicone-based – lubricates, keeps contacts clean, reduces wear

PACK SIZE & PART NUMBER

CRC • Aerosol 94g - 5106



RED LITHIUM GREASE

Withstands extreme pressures & temperature ranges





SEALANTS

ADOS All Purpose Silicone

ADOS All Purpose Silicone is a single component, fast curing, room temperature vulcanising silicone.

- A general purpose, neutral cure RTV silicone
- Mould & mildew resistant
- Widely used by plumbers, roofing contractors, builders, general industry and the home handyman
- Ideal for bathroom & other plumbing applications
- Translucent colour
- Can be used on most building materials and many damp surfaces



PACK SIZE & PART NUMBER

CRC • Cartridge 310ml - 8300

ADOS Universal Silicone

ADOS Universal Silicone is a weather-resistant silicone sealant. Ideal for a wide range of kitchen, bathroom & other plumbing applications.

- 100% Silicone
- Waterproof silicone sealant
- Mould and mildew resistant
- Forms a translucent seal



PACK SIZE & PART NUMBER

CRC • Cartridge 310ml - 8358

ADOS Kitchen & Bath Silicone

ADOS Kitchen & Bath Silicone is a single component, fast-curing room temperature vulcanising silicone.

- Kitchen and bathroom sealant formulated for interior and wet areas
- Adheres to plastic, tiles, stainless steel, glass and porcelain
- Contains additives to resist mould and mildew
- Cures white



PACK SIZE & PART NUMBER

CRC • Cartridge 310ml - 8310

ADOS Roof & Plumbing Silicone

ADOS Roof & Plumbing Silicone is specially formulated and translucent in colour for use with zinc coated/galvanised metal products, aluminium frames and fiberglass to glaze, seal and waterproof.

- 100% silicone
- Permanently flexible
- UV resistant
- Flexible and waterproof adhesive/sealant
- Ideal for building materials, glass, ceramics, brick & most painted surfaces



PACK SIZE & PART NUMBER

CRC • Cartridge 310ml - 8359

ADOS Roof & Gutter Silicone

ADOS Roof & Gutter Silicone is a single component, fast curing, room temperature vulcanising silicone.

- Fast curing
- Will not harm galvanised iron
- Specifically for work on roofs and gutters
- Neutral cure



PACK SIZE & PART NUMBER

CRC • Cartridge 310ml - 8315

ADOS Window & Glass Silicone

ADOS Window & Glass Silicone is specially formulated to seal joints around windows and glass.

- Provides 100% waterproof seal
- Translucent to blend with its surroundings
- Permanently flexible
- Bonds to glass and most surfaces
- Not suitable for zinc & copper metals, and concrete



PACK SIZE & PART NUMBER

CRC • Cartridge 310ml - 8305

ADOS Nail It Panel Adhesive

ADOS Nail It is a flexible, waterproof adhesive designed for bonding a wide range of substrates.

- No slump
- Excellent wet grab
- Cures to a tough, rubbery bead
- Eliminates nail pops, bridges, minor framing gaps & reduces sound transmission
- Unaffected by moisture
- Ideal for eliminating squeaks in tongue & groove flooring



PACK SIZE & PART NUMBER

CRC • Cartridge 345g - 8318

ADOS Gap Filler

ADOS Gap Filler is a high quality water-based sealant suitable for joints where moderate movement is anticipated. It will not bleed, discolour or stain adjacent surfaces.

- Paintable once it dries tack free: water based paint (30mins), oiled-based paint (at least 8 hours)
- Ideal for indoor use
- Easy to apply
- Paintable
- Clean up with water



PACK SIZE & PART NUMBER

CRC • Cartridge 450g - 8330



ADOS Krystal Clear MS Sealant

ADOS Krystal Clear MS is a high performance adhesive sealant based on Hybrid Silyl Modified Polymers (commonly known as MS or SMP) formulated for durable bonding, sealing and waterproofing.

- Works on wet & dry surfaces
- Will not crack or yellow – no signs of aging in adverse weather conditions and UV exposure
- Permanently flexible – excellent mechanical properties over a wide temperature range for use in dilation joints
- Cures quickly in ambient temperatures

PACK SIZE & PART NUMBER

CRC • Cartridge 300g - 8312



ADOS Galvseal Adhesive Sealant

ADOS Galvseal is a versatile high solids adhesive sealant with high performing gap-filling qualities.

- Oil and solvent resistant
- Abrasion resistant
- For use in plumbing, roofing, building, aluminium windows & interior/exterior manufacturing applications
- Quickly dries to a hard, non-flexible film sealant
- Ideal for use as an 'in process' product

PACK SIZE & PART NUMBER

CRC • Cartridge 310ml - 8337



ADOS RTV Acetic Cure Silicone

ADOS RTV Acetic Cure Silicone is a single component, fast curing, room temperature vulcanising silicone designed for glazing applications, general sealing and weatherproofing.

- Acetic cure for extra bond and increased strength
- Permanently flexible
- Ideal for glazing

PACK SIZE & PART NUMBER

CRC • Cartridge 310ml - 8365



ADOS RTV Neutral Cure Silicone

ADOS RTV Neutral Cure is a single component, general purpose, fast curing silicone formulated to seal and bond most materials.

- Neutral cure, non-corrosive
- Excellent adhesion
- Bridges up to 8mm
- Non-corrosive, low odour
- Quickly forms a flexible, waterproof seal seal at room temperature

PACK SIZE & PART NUMBER

CRC • Cartridge Black 310ml - 8367 • Cartridge Neutral 310ml - 8360



ADOS HS-E High Strength Elastomeric Adhesive

ADOS HS-E High Strength Elastomeric Adhesive is a one component structural adhesive with MS Technology.

- High strength structural adhesive
- Elastomeric (flexible)
- Excellent adhesion
- Ideal for construction, building, engineering, automotive & marine applications
- Extremely versatile - can replace most construction, polyurethane adhesives & sealants

PACK SIZE & PART NUMBER

CRC Cartridge: • Black 400g - 8385 • Grey 400g - 8386 • White 400g - 8387



ADOS MS Sealant

ADOS MS Sealant is a high performance, one-component neutral curing adhesive sealant based on MS Polymers. It is ideal where silicone sealants are not suitable.

- Excellent adhesion strength – to a wide range of substrates commonly used in the building, construction and engineering industries
- Waterproofs, bonds and seals – wide variety of application, one product does it all.
- Paintable – cured product can be painted with most solvent and water based paints and varnishes
- BRANZ appraised for white, black & grey

PACK SIZE & PART NUMBER

CRC Cartridge: • Grey 400g - 8364 • Black 400g - 8363 • White 400g - 8361 • Clear 300g - 8362



RTV Silicone Select-A-Bead

CRC RTV (Room Temperature Vulcanizing) Silicone Pressurized Tubes are designed for a wide range of sealing, bonding, protecting and waterproofing applications.

- Sensor safe
- Double piston pressurized can - allows for smoother, effortless application
- Unique nozzle enables easy control of silicone bead width

PACK SIZE & PART NUMBER

CRC Aerosol: • Black 184g - 14072 • Red 184g - 14059 • Grey 184g - 14060



Grey RTV Gasket Sensor Safe

CRC Grey RTV Gasket Sensor Safe is a self-forming room temperature vulcanising Silicone that replaces almost any cut gasket, felt, cork, paper, asbestos and rubber gaskets.

Formulated for high torque applications (predominantly Japanese designs).

- Sensor safe
- Intermittent service temperature of up to 330°C
- Makes any size or shape of gasket in minutes

PACK SIZE & PART NUMBER

CRC • Blister Tube 85g - 8637 • Cartridge 300g - 5079



ADOS Red Gasket 260

ADOS Red Gasket 260 is a self-forming room temperature vulcanising Silicone that replaces felt, cork, paper, asbestos and rubber gaskets.

- Continuous service temperature of up to 260°C
- Makes any size or shape of gasket in minutes
- Resists cracking, shrinking and vibration

PACK SIZE & PART NUMBER

CRC • Blister Cartridge 300g - 8380



Gasket 340

CRC Red RTV Gasket 340 is a self-forming room temperature vulcanising Silicone that replaces almost any cut gasket, felt, cork, paper, asbestos and rubber gaskets.

- Intermittent service temperature of up to 340°C
- Makes any size or shape of gasket in minutes
- Ideal for high temperature high pressure applications
- Remains flexible and durable

PACK SIZE & PART NUMBER

CRC • Blister Tube 85g - 8629 • Cartridge 300g - 5078



ADOS Leak Stop

ADOS Leak Stop is an instant waterproofing sealant that can be applied in rain, snow, and even under water; sealing immediately with no fear of wash off.

- Outstanding flexibility, strength, and durability
- Highly versatile – can be used in rain, and under water
- Seals immediately in all conditions
- High elasticity

PACK SIZE & PART NUMBER

CRC • Cartridge Clear 300ml - 8492 • Cartridge Grey 300ml - 8490 • Clear 1L - 8494



Leak Stop Spray Seal

CRC Leak Stop Spray Seal is easy to use and provides a waterproof seal to almost any surface.

- Touch dry in 15-30min
- Bridges caps & cracks
- Provides a flexible, durable, long lasting solution to leaks
- 360° spray system - enables application at any angle
- Ideal for hard to reach places

PACK SIZE & PART NUMBER

CRC • Aerosol Translucent 350g - 8498 • White 350g - 1753108



STOP LEAKS

WITH CRC LEAK STOP SPRAY SEAL

Provides a waterproof seal to almost any surface



More about the product
scan the QR code!





2005

ADHESIVES

Repositional for 1-2 minutes



METAL



CORK



PAPER



FOAM/POLY



WOOD



FABRIC



CARPET

PLUS MORE

- Fast Tack
- Clear Drying
- Rapid Cure
- Non Staining
- Low Soak

140g / 210ml



ADOS Multi-Purpose Spray Adhesive

ADOS Multi-Purpose Adhesive is a spray glue that bonds most materials quickly and easily, giving a long-lasting bond. It is formulated to give a fast tack-off, low-soak spray and dries clear.

One-way adhesive that remains repositionable for 1-2 minutes.

- Reliable – high strength
- Convenient – rapid cure, fast tack
- User friendly – non staining/low mist
- Low odour and low soak

PACK SIZE & PART NUMBER

CRC • Aerosol 210ml - 8015 • Aerosol 575ml - 8017



ADOS UHS Spray Adhesive

ADOS UHS is an ultra high strength contact adhesive which gives an immediate and permanent bond on a wide variety of surfaces. It is formulated to give low soak, cure fast, dry clear and be non-staining.

- Re-positionable for 1-2 minutes
- Once positioned, the adhesive will bond within 10-20mins
- Variable nozzle for controlled and accurate spraying

PACK SIZE & PART NUMBER

CRC • Aerosol 550ml - 8180



ADOS On & Off Restickable Spray Tac

ADOS On & Off is a smart, restickable high tack adhesive that is designed to stick lightweight objects to smooth, dry surfaces and be able to remove and re-stick without any damage.

- Will not bleed through, wrinkle materials or leave marks or residue on the untreated surface
- Strong yet repositionable
- Will not loose tack over time
- Allows for flat application and a large glued surface - no bulky dots
- Non-toxic - safe for the whole family once dried

PACK SIZE & PART NUMBER

CRC • Aerosol 210ml - 8288 • Aerosol 550ml - 8290



ADOS F2 Contact Adhesive

ADOS F2 Multipurpose Contact Adhesive is a high-performance general-purpose contact adhesive.

It is easily applied, highly versatile, durable and bonds instantly to most substrates.

- Versatile – multipurpose
- High bond strength – bond most materials and substrates
- Water resistant / flexible – ideal for a wide variety of uses

PACK SIZE & PART NUMBER

CRC Clear Honey Colour • Tube 75ml - 8002 • Blister 75ml - 8003 • 125ml - 8006 • 250ml - 8008 • 500ml - 8009 • 1L - 8010 • 2L - 8012 • 4L - 8014 • 20L - 8016



ADOS F22 Long Tack Contact Adhesive

ADOS F22 is an outstanding high-performance contact adhesive that has been optimised for brushing. Its long tack allows more working time and its high viscosity makes it suitable for coverage of porous surfaces.

- Versatile – multipurpose
- Plasticiser resistance – ideal for bonding vinyls to walls
- High bond strength – ideal laminating adhesive
- Ideal for wide range of installation, manufacture or repair applications

PACK SIZE & PART NUMBER

CRC • 500ml - 8026 • 4L - 8030 • 20L - 8032



ADOS F3 Non Drip Contact Adhesive

ADOS F3 is a thixotropic, high strength contact adhesive. It is formulated to be non-spill and non-drip, giving greater control of application and better coverage.

- Non-drip - ideal for vertical, over head and porous surfaces, e.g. gib board
- Resilient – good resistance to heat, water, acids and alkalis
- Does not soak - provides ideal results on porous surfaces

PACK SIZE & PART NUMBER

CRC • 250ml - 8018 • 500ml - 8020 • 1L - 8022 • 4L - 8024



ADOS F38 High Heat Contact Adhesive

ADOS F38 is an outstanding heat resistant contact adhesive capable of withstanding a high range of temperatures.

- High heat resistance – up to 175°C, used in areas where temperature is a factor
- Easy to use - range of application methods, can be sprayed, brushed or rolled
- Colour (red) – greater visibility of coverage
- Colour (clear) - ideal for seam joints
- Ideal for areas exposed to high heat
- Ideal for surfaces that are exposed to direct sunlight

PACK SIZE & PART NUMBER

CRC • 500ml - 8034 • 1L - 8036 • Clear 4L - 8038 • Clear 20L - 8042 • Red 20L - 8044



ADOS PVC Pipe Cement

ADOS PVC Pipe Cement is a high quality clear, easy to use PVC adhesive. It is specially suitable for rigid uPVC and M-PVC piping in both pressure and non pressure applications.

- General purpose
- High bond strength
- Ideal for guttering, spouting, conduit, waste bowls, standard low pressure pipe systems, channelling etc
- Rapid drying

PACK SIZE & PART NUMBER

CRC • Tube 75ml - 8124 • 125ml - 8128 • 250ml - 8132 • 500ml - 8136



ADOS F55 Sprayable Contact Adhesive

ADOS F55 is a multi-purpose high strength contact adhesive, with a wide range of applications.

- Versatile – multi-purpose
- Heavy glue line – very high bond strength
- Long working time (bond time) – ideal for bonding large areas
- Specially developed for commercial contractors

PACK SIZE & PART NUMBER

CRC • Clear 20L - 8054 • Red 20L - 8056



ADOS F86 Multi-Purpose Spray Grade Contact Adhesive

ADOS F86 is a multi-purpose spray grade contact adhesive, with a wide range of applications.

- General purpose spray grade – versatile adhesive
- Low misting formula – specially developed to use with air driven or airless spray equipment
- Long working time (bond time) – ideal for bonding large areas

PACK SIZE & PART NUMBER

CRC • Red 20L - 8062



ADOS F91 Airless Spray Contact Adhesive

ADOS F91 is formulated to offer very controlled spraying with airless spray equipment. It is a low viscosity product which gives a fine glue line.

- Spray grade – formulated for optimum performance for airless spraying
- Fine glue line – enhanced finished product appearance
- Low misting formula – greater economy, less product waste
- Airless spray application

PACK SIZE & PART NUMBER

CRC • Clear 20L - 8094 • Red 20L - 8096



ADOS F92 Air Driven Spray Contact Adhesive

ADOS F92 is formulated to offer very controlled spraying with air driven spray equipment. It is a low viscosity product which gives a fine glue line.

- Spray grade – formulated for optimum performance with air driven spraying
- Fine glue line – enhances finished product appearance
- Low misting formula – greater economy, less product waste
- Air driven spray application

PACK SIZE & PART NUMBER

CRC • Clear 20L - 8084 • Red 20L - 8086



ADOS F101 EPDM Adhesive

ADOS F101 is a high strength solvent based contact adhesive formulated to bond EPDM roofing membranes to a range of substrates.

- Specially formulated – for bonding EPDM and TPO roofing membranes
- High strength, bonds quickly – exceeds minimum requirement specified in BRANZ Evaluation Method EM5

PACK SIZE & PART NUMBER

CRC • 20L - 8960



ADOS Styrobond

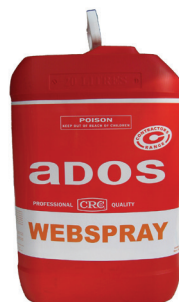
ADOS Styrobond is a long tack contact adhesive formulated specifically for bonding polystyrene foam materials to most substrates.

Most commonly used in the fabrication of polystyrene foam sandwich insulation panels for use in thermal or acoustic insulation.

- Formulated for bonding polystyrene – does not attack polystyrene
- Long tack time – ideal for bonding large areas
- Versatile – may be used as a one way stick adhesive
- Colour (Red) – greater visibility of coverage

PACK SIZE & PART NUMBER

CRC • 500ml - 8110 • 20L - 8116



ADOS Webspray Adhesive

ADOS Webspray is a long tack, fast drying adhesive suitable for applications where tack time can be controlled.

- One way stick adhesive
- Bond time is 1-5 minutes
- Web spray pattern – adhesive stays on top of the surface and does not penetrate into the material
- Ideal for foam or fibrous materials

PACK SIZE & PART NUMBER

CRC • 20L - 8148 • 209L - 8150



ADOS GreenStik Contact Adhesive

ADOS GreenStik Contact Adhesive is a high performance adhesive formulated for general use.

- Environmentally friendly. Low VOC, low odour, non-flammable, no solvents, waterbased
- Instant permanent bond – no waiting time, no need for clamps or other pressing facilities
- Strong bond with high shear and peel strength – for professional use
- Ideal for large surface areas, bonding of veneers, laminated plastics on bench-tops, vinyl repairs etc

PACK SIZE & PART NUMBER

CRC • 250ml - 8254 • 500ml - 8256 • 1L - 8258

ADOS GreenStik Vinyl Flooring Adhesive



ADOS GreenStik Vinyl Flooring Adhesive is a high viscosity, low slump product with long tack off formulated for all commercial and residential vinyl installations.

- Environmentally friendly. Low VOC, low odour, non-flammable, no solvents, waterbased
- Water resistant – suitable for use in kitchens and bathrooms. Not suitable for permanent immersion in water
- Dries clear and colourless – seamless repairs. Non-staining
- Provides superior adhesion to most flooring substrates

PACK SIZE & PART NUMBER

CRC • 1L - 8122 • 4L - 8123

ADOS Solvent N



ADOS Solvent N is a good general-purpose adhesive solvent cleaner used for cleaning equipment that are contaminated with neoprene adhesives brushes, rollers.

- Cleans surface in preparation for a contact adhesive
- Removes old, dried adhesive
- Cleans brushes & application equipment
- Can soften dried flooring adhesives to assist with easier removal

PACK SIZE & PART NUMBER

CRC • 500ml - 8200 • 1L - 8202 • 4L - 8204 • Aerosol 550ml - 8205 • 20L - 8206

ADOS Solvent PS



ADOS Solvent PS is a mild solvent suitable for cleaning down surfaces contaminated with dried adhesives. It coagulates the dried adhesive for easier removal, rather than dissolving. It is a mild solvent which should not damage most surfaces used on, i.e. vinyls, wood, laminates, plastics etc. (areas to be cleaned should be tested first)

PACK SIZE & PART NUMBER

CRC • 4L - 8214 • 20L - 8216

ADOS Stuff Off Adhesive Remover



ADOS Stuff Off Adhesive Remover is a powerful adhesive remover that is designed to soften or dissolve most adhesives and paints as well as uncured laminating resins and uncured sealants.

- Ideal for use on metal, wood, fabric, carpet, stone, brick and steel
- Effectively removes adhesives, paints, graffiti, inks, resins, grease, uncured sealants
- Gel formula clings to surface - ideal for vertical applications

PACK SIZE & PART NUMBER

CRC • Aerosol 500ml - 8270

ADOS Marine Waterproof Filler



ADOS Marine Waterproof Filler is a waterproof vinylester filler perfect for Marine applications both above and below the waterline. It can be used on all boat building materials including wood, fibreglass, composites, alloys and steel.

- Non-shrinking
- Suitable for spa pools, swimming pools, surfboards etc
- Sets to a tough yet workable finish for painting

PACK SIZE & PART NUMBER

CRC • 500ml - 7083 • 1L - 7084

ADOS Fibre Filler



ADOS Fibre Filler's unique chemically engineered formulation of resins and aluminium, forms a filler of exceptional strength and adhesion with no shrinkage.

- No shrinkage
- Exceptional strength and adhesion – eliminates the need to weld patches which causes panel distortion
- Once set - ideal for filling or bridging large holes and gaps in steel, fibreglass, and most other materials
- Sets as hard as steel yet is easy to use and work before curing

PACK SIZE & PART NUMBER

CRC • 500ml - 7063 • 1L - 7064

ADOS Builders Fill



ADOS Builders Fill is a permanent repair or filler that can be used on a variety of surfaces. It is ideal to repair gaps, cracks, holes, dents or replacing rotten or missing wood sections.

- Repairs gaps, cracks, holes and dents
- Smooth and easily applied, with exceptional adhesion
- Can be moulded to shape and trimmed while still semi-hard can be moulded to shape and trimmed while still semi-hard
- Will not shrink
- Waterproof

PACK SIZE & PART NUMBER

CRC • 250ml - 7072 • 500ml - 7073 • 1L - 7074 • 2L - 7075 • 3L - 7076

121 Concrete Filler



CRC 121 Concrete Filler is a two part silica based epoxy. Once mixed, the putty can be easily moulded to form permanent watertight repairs with a smooth finish to concrete, brick, mortar and plaster.

- Easy to work - can be moulded and shaped with water
- Permanent and super strong – cures harder than concrete
- Adheres well to wet surfaces - suitable for most underwater repairs
- Similar colour & consistency to new concrete
- Excellent chemical & UV resistance

PACK SIZE & PART NUMBER

CRC • 750g - 1751844 • 1.5kg - 1751845

ADOS Plastic Putty



ADOS Plastic Putty is an all purpose, versatile, fast curing, medium weight polyester filler. It gives an extremely high quality finish for general body filling on a variety of surfaces.

- All purpose and versatile – gives a quality finish on surfaces including car bodies, boat, trailer, caravan, bricks, wood, metal, fibreglass, most plastics and many other materials.
- No shrinkage
- Fast curing
- Cures tack free

PACK SIZE & PART NUMBER

CRC • 125ml - 7001 • 250ml - 7002 • 500ml - 7003 • 1L - 7004 • 3L - 7006

ADOS Marine Glue



ADOS Marine Glue is a cross-linking Epoxy Polymer with exceptional cure and physical characteristics.

- 100% waterproof it is also ideal for exterior construction use
- Super strong and impact resistant
- Easy to mix 1:1 ratio
- Bridges and strengthens irregular joints
- When cured it is usable to drill, mill, tap, screw, sand, plane or saw
- No shrinkage on cure

PACK SIZE & PART NUMBER

CRC • 500ml - 4496 • 1L - 4494

ADOS Builders Glue



ADOS Builders Glue, is an all-purpose, weatherproof epoxy that bonds, seals, fills and welds. Thousands of uses on-site or around the home.

- 100% waterproof – use in wet areas and to seal shower floors, join shower bases to floors and walls etc
- Super strong – bonds similar and dissimilar products
- Convenient & versatile – suitable for over painting, drilling, tapping, sanding, planing, sawing

PACK SIZE & PART NUMBER

CRC • 500ml - 4490 • 1L - 4492

Minute Mend Epoxy Putty



CRC Minute Mend is a versatile epoxy putty packaged in a convenient one piece stick for immediate, permanent repairs.

- Convenient – easy, no mess and is ready to use in less than one minute
- Multiple uses – ideal to reshape, rebuild, or permanently repair a variety of surfaces and applications.
- Cures steel hard
- It can be used for plumbing, electrical, ceramic, vehicle and machinery repair

PACK SIZE & PART NUMBER

CRC • Tube 114g - 14070

ADOS 121 Repair Anything



ADOS 121 is an epoxy polymer with glass fibres already integrated into the hardener – making use so easy.

- Quick and easy to use
- 1:1 mix ratio
- Multi-purpose structural repair
- Strong & flexible
- Waterproof and can be applied to wet surfaces
- Suitable to drill, mill, tap, screw, sand, plane and saw

PACK SIZE & PART NUMBER

CRC • 500ml - 4420

ADOS E3 Epoxy Mortar



ADOS E3 Epoxy Mortar is a two part silica based epoxy. Once mixed, the putty can be easily moulded to form permanent watertight repairs with a smooth finish to concrete, brick, mortar and plaster.

- Permanent watertight repair
- Fast cure – within 3 hours at 30°C
- Permanent and super strong – cures harder and more impact resistant than concrete
- It adheres well to wet surfaces and is suitable for most underwater repairs
- Similar consistency & colour to new concrete
- Excellent chemical & UV resistance

PACK SIZE & PART NUMBER

CRC • Hardener + Resin 8L - 4511 • Resin 10L - 4554 • Hardener 10L - 4559

ADOS Resamax Epoxy Mortar



ADOS Resamax Epoxy Mortar is a two part silica based epoxy. Once mixed, the putty can be easily moulded to form permanent watertight repairs with a smooth finish to concrete, brick, mortar and plaster. It adheres well to wet surfaces and is suitable for most underwater repairs.

- Permanent and super strong – cures harder than concrete
- Cures watertight – suitable for repairs to submerged substrates
- Similar consistency and colour to new concrete
- Excellent chemical and UV resistance

PACK SIZE & PART NUMBER

CRC • Resin + Hardener 1L - 4503 • Resin + Hardener 2L - 4505
• Resin + Hardener 8L - 4506 • Resin 10L - 4550 • Hardener 10L - 4555

ADOS Structural Adhesive Epoxy



ADOS Structural Adhesive is a superior one-to-one mix epoxy adhesive. It will not slump, has high impact resistance and may be milled, tapped, screwed, sawn and painted over when cured.

- Once cured, can be milled, tapped, screwed, sawn & painted over
- 100% waterproof – use in wet areas and to seal shower floors, join shower bases to floors and walls etc
- Super strong – bonds similar and dissimilar products
- Non-flammable

PACK SIZE & PART NUMBER

CRC • 500ml - 4402 • 1L - 4404 • 2L - 4406 • 8L - 4408
• Resin 10L - 4410 • Hardener 10L - 4415

ADOS Bondcrete



ADOS Bondcrete is a two part silica based epoxy. Once mixed, the workable putty forms permanent watertight repairs to concrete, brick, mortar and plaster.

- Permanent and super strong – cures harder than concrete
- Cures watertight – suitable for repairs to submerged substrates
- Appearance – similar consistency and colour to new concrete
- Excellent chemical and UV resistance

PACK SIZE & PART NUMBER

CRC • Resin Pail 10L - 4551 • Hardener Pail 10L - 4556

ADOS All Purpose Resin



ADOS All Purpose Resin is a sheathing and laminating resin designed for extreme durability in both marine and general applications.

- Extremely durable
- Good penetration
- Superior wet out
- No volatile solvents, no strong solvent odour

PACK SIZE & PART NUMBER

CRC • 625ml - 4104 • 1.25L - 4106 • Fast 4L - 4155 • Slow 4L - 4156
• 5L - 4140 • 16L - 4150 • 200L - 4170

ADOS Rapid Resin



ADOS Rapid Resin is a high-performance two part epoxy resin glue. The one-to-one mix eliminates wastage and guarantees performance.

- Sets in 5 minutes
- Designed to repair cracks and dents
- An excellent epoxy filler for jobs where speed of cure is essential
- Ideal for jobs where the finished appearance is important
- Once cured, can be varnished and painted over
- Will not swell after prolonged immersion in water

PACK SIZE & PART NUMBER

CRC • 250ml - 4463

ADOS Timber Sealer/Primer



ADOS Timber Sealer/Primer is an equal mix epoxy coating that soaks deep into the timber and hardens to an extremely tough coat.

- Excellent long term microbiocidal barrier coating for all marine and general situations
- An unfilled low viscosity resin and hardener of clear honey colour, which is supplied in a handy 1:1 mixing ratio form
- Effectively densifies timber
- Dense coat stops water entering which prevents staining and rotting

PACK SIZE & PART NUMBER

CRC • Resin 4L - 4360 • Hardener 4L - 4365



VEHICLE CARE

INTERIOR



Liquid Armour

CRC Liquid Armour is a vinyl and rubber protectant that protects a number of surfaces including vinyl, wood, plastic and rubber trim, fibreglass, chrome, dashboards and wood.

- Protects and restores
- Long-lasting, non-greasy protection and sheen
- Repels water, guards against cracking, dulling, fading and UV damage
- Surfaces become anti-static – repelling dust and dirt
- Non-toxic, non-flammable

PACK SIZE & PART NUMBER

- Low Sheen 250ml - 5025 • Spray 250ml - 5023 • Trigger 500ml - 5022
- Low Sheen 500ml - 5026 • 4L - 5024



Leather Cleaner & Conditioner

CRC Leather Cleaner & Conditioner is a unique 3 in 1 formulation that safely cleans, moisturises and protects leather surfaces in one easy step.

- Cleans, moisturises & protects leather
- Prevents premature wear due to sun, heat and time
- One easy step

PACK SIZE & PART NUMBER

- Aerosol 300ml - 9306



Carpet & Upholstery Cleaner

CRC Carpet & Upholstery Cleaner cleans & deodorises a variety of surfaces in your car, boat & home.

- Suitable for a variety of surfaces including dashboards & door trims
- Contains a deodorising fragrance – eliminates bad odours
- Solvent free
- Ideal for use on carpets, vinyl, vinyl roofs, car seats, car leather, cloth, velour, metal, wood, rubber and paintwork

PACK SIZE & PART NUMBER

- Aerosol 550ml - 9304



Auto-Kolone

Auto-Kolone Original formula, the world's first and finest automotive deodoriser.

- Can be used for car, home and office applications
- Banishes unpleasant odours
- Kills bacteria
- Purifies the air

PACK SIZE & PART NUMBER

- Spray 100ml - AK10

WASH/ POLISH



Wash & Wax

CRC Wash & Wax is a specially designed 'two in one' formula which combines a high quality cleaner with a protective wax to leave your car in the best possible condition.

- Two in one formula – waxes while you wash
- Gentle on all painted surfaces yet tough on dirt and road grime
- Safe to use on all paint surfaces
- Coats and protects from environmental conditions
- Streak free, ultra shine finish

PACK SIZE & PART NUMBER

- 1L - 9011 • 2.5L - 9012



Ultra Gloss Car Wash

CRC Ultra Gloss is designed to gently clean your car's paint and keep it looking like new. The premium foaming gel safely loosens, lifts and removes dirt and road grime, leaving a brilliant shine.

- Safe to use on all paint especially new and recently waxed surfaces.
- Environmentally friendly - phosphate free & biodegradable
- Removes tough dirt, road grime, bugs and bird residue

PACK SIZE & PART NUMBER

- 1L - 9009



Tough Wash

CRC Tough Wash is an advanced heavy duty formula that provides exceptional cleaning that removes the toughest dirt and grime safely from all paint surfaces.

- Heavy duty formula – removes tough dirt, grime, bugs, road tar, tree sap, bird residue
- Safe for all paint surfaces
- Cleans without stripping protective coatings

PACK SIZE & PART NUMBER

- 1L - 9021 • 2.5L - 9022



Quick & Easy Shine

CRC Quick & Easy Shine is a quick and easy way to shine in between washing and waxing for quick detailing.

- Ultimate paintwork shine in seconds
- Easy no buffing or rubbing
- Spray on, wipe off
- Safe to use on all clear coats & glossy paint finishes (not for matte finishes)

PACK SIZE & PART NUMBER

- Trigger 500ml - 9205

Bug & Tar Remover



CRC Bug & Tar Remover is formulated to safely and easily remove stubborn bugs, road tar, tree sap and bird residue from vehicle exteriors.

- Easy to apply - simply spray and wipe
- Leaves a glossy shine that helps repel future grime
- Clear coat safe

PACK SIZE & PART NUMBER

CRC • Aerosol 400ml - 9019

Polish & Wax



CRC Polish & Wax is a specially formulated two in one product that shines and protects all car paint types.

- Creates a vibrant deep gloss shine – nourishes newly conditioned paint
- Pure carnauba wax – protects and enhances paint
- Creates a showroom finish
- Suitable for all paint types including clear coats
- Long lasting protection

PACK SIZE & PART NUMBER

CRC • 500ml - 9015

Liquid Cut & Polish



CRC Liquid Cut & Polish rejuvenates dull or faded paintwork, restoring it to a deep rich gloss and shine.

- Restores gloss and durable shine
- Quickly & safely removes surface imperfections
- Safe to use on all auto paint surfaces including clear coats
- No hard rubbing is required

PACK SIZE & PART NUMBER

CRC • 500ml - 9017

CRC RE-PO Auto Cream Polish



CRC RE-PO Cream Polish improves visual appearance and provides outstanding protection for new and well kept vehicles with paintwork in good condition.

- Improves visual appearance - provides a high-gloss shine
- Premium carnauba wax - for outstanding protection
- Easy on, easy off
- It is safe for use on all automotive paint

PACK SIZE & PART NUMBER

CRC • 250g - 9070

CRC RE-PO Cutting Compound



CRC RE-PO Cutting Compound is designed to remove heavily weathered layers of paintwork and for restoring poor surfaces.

- Rejuvenates heavily weathered, dull, faded surfaces
- Removes imperfections - old waxes, tar, scratches, swirl marks, stains, paint defects etc
- Quickly & easily cuts through oxidized surfaces
- Once used, accompany with CRC RE-PO cream polish for ultimate protection

PACK SIZE & PART NUMBER

CRC • 300g - 9500

CRC RE-PO Extra Cut Cream Polish



CRC RE-PO Extra Cut Cream Polish is a heavy duty cutting cream that safely restores a deep, rich gloss to dull, faded or heavily weathered paintwork.

- Rejuvenates dull, faded or weathered paintwork
- Safely restores a deep, rich gloss
- Premium grade carnauba wax gloss and long lasting protection

PACK SIZE & PART NUMBER

CRC • 250g - 9060 • 3.6kg - 9061

WHEEL CARE/ EXTERIOR

Mag Monster Wheel Cleaner



CRC Mag Monster is formulated to penetrate brake dust and quickly clean your wheels.

- Easily removes brake dust and road grime
- pH neutral
- Makes light work of cleaning wheels
- Pleasant scent with no sulphur smell

PACK SIZE & PART NUMBER

CRC • Trigger 500ml - 9308 • 4L - 9309





Wheel Cleaner

CRC Wheel Cleaner cleans and shines all wheel types.

- Non-acid formula - does not harm paint, rubber or plastics
- Fast-acting and easy to use
- Breaks down stubborn road residue, removes grime, grit and brake dust
- Restores wheels to original shine

PACK SIZE & PART NUMBER

CRC • Trigger 500ml - 9200



Mag Wheel Cleaner

CRC Mag Wheel Cleaner is an alloy wheel cleaner with a powerful non-acid formula that is suitable for cleaning most wheel types including original factory-applied clear coats.

- Unique foaming action – remains in place to soak into the dirt
- Powerful non-acid formula – will not damage metal surfaces or driveways
- Repels dust & dirt for a long lasting shine

PACK SIZE & PART NUMBER

CRC • Aerosol 500ml - 9302



Tyre Cleaner

CRC Tyre Cleaner cleans, protects and shines tyres in one easy step, leaving a rich satin finish.

- Easy one-step application – apply and leave
- Cleans, protects and shines tyres
- No rinsing, wiping or rubbing
- Dries in minutes to a deep gloss

PACK SIZE & PART NUMBER

CRC • Aerosol 500ml - 5045 • 4L - 5048



Tyre Black

CRC Tyre Black quickly and effectively revives tyres, black rubber, car mats and mud flaps.

- Restores, revives and protects all black rubber surfaces
- Deep, black satin finish
- Long-lasting & water-resistant
- Water-based for easy clean up

PACK SIZE & PART NUMBER

CRC • 500ml - 9102



Wet Look

CRC Wet Look produces a durable, ultra-high gloss, wet look shine for tyres, mudflaps and bumpers. No rinsing, wiping or rubbing required.

- Leaves a deep wet look finish
- High endurance - withstands normal wet conditions
- Quick & easy - spray and leave
- Ideal for low profile and high performance tyres

PACK SIZE & PART NUMBER

CRC • Aerosol 500ml - 5047



Dry Look

CRC Dry Look is a low sheen tyre finish.

- Produces an intense, long lasting low sheen finish
- Leaves a deep natural black finish
- High endurance - withstands normal wet conditions
- Quick & easy - spray and leave
- Ideal for low profile and high performance tyres

PACK SIZE & PART NUMBER

CRC • Aerosol 500ml - 5046



Windscreen De-Icer

CRC Windscreen De-Icer instantly dissolves ice, snow or frost. The non-smear formula actively fights re-freeze and keeps windscreens crystal clear.

- Instantly dissolves ice, snow, frost
- Releases frozen doors
- Relieves internal fogging
- Can be used to release frozen door locks
- Harmless to glass, rubber, plastics, vinyls and all automotive finishes

PACK SIZE & PART NUMBER

CRC • Aerosol 400ml - 5044



Nu-Vu Windscreen Cleaner

CRC Nu-Vu is a windscreen cleaner with a unique formula that removes insects, road film, dirt & grime from windscreens.

- Reduces headlight glare, prevents webbing and fogging
- Gives unrestricted road vision both inside and outside the vehicle
- Crystal clear windscreens
- Helps smooth wiper blade action
- One-shot concentrate to treat a full washer bottle

PACK SIZE & PART NUMBER

CRC • 60ml - NV1



Glass Cleaner

CRC Glass Cleaner easily removes tough dirt and grime including grease, fingerprints, and bugs.

- Professional formula
- Sparkling streak-free finish for all glass surfaces
- Contains no CFCs
- Prevents misting when used on a regular basis

PACK SIZE & PART NUMBER

CRC • Aerosol 500ml - 3070 • Trigger 500ml - 3071

DOCTOR RANGE



Glass Doctor

CRC Glass Doctor restores glass by removing difficult stains, hard water spots, haze, mineral deposits and soap scum from most glass surfaces.

- Restores glass
- Ideal for use on most glass windows on vehicles, boats, buildings, and glass shower doors

PACK SIZE & PART NUMBER

CRC • Tottle 200ml - 9225



Headlight Doctor

CRC Headlight Doctor restores clarity to dull and yellowing headlight lenses.

- Convenient – quick & easy
- Safety – improves driving visibility
- Cleans, shines and protects
- Removes surface oxidation, discolouration, stains, light scratches, contamination and hazing

PACK SIZE & PART NUMBER

CRC • Tottle 200ml - 9230



Metal Doctor

CRC Metal Doctor is a quality metal polish that quickly and easily cleans, polishes and protects a variety of metals.

- Restores & polishes metal surfaces
- Cleans, polishes and protects
- Perfect for use in auto, marine, hobby and household applications
- Not suitable for use on anodised aluminium
- Provides long lasting shine and weather protection

PACK SIZE & PART NUMBER

CRC • Tottle 200ml - 9235



Plastic & Rubber Doctor

CRC Plastic & Rubber Doctor is a faded plastic and rubber restorer that instantly restores, protects and maintains original colour and lustre of exterior trim.

- Instantly restores original colour to faded plastic & rubber
- Long-lasting weather & UV protection – lasts up to 4 months
- For use on all colours and textures of plastic, vinyl and rubber

PACK SIZE & PART NUMBER

CRC • Tottle 200ml - 9240



Paint Doctor

CRC Paint Doctor is a car scratch and swirl remover that's the perfect solution to touch up isolated paint scratches, scuffs, road film and blemishes caused by supermarket trolleys, trees, keys.

- Safe on all clear coat finishes
- Ideal for all auto paint surfaces
- Quickly & easily removes light scratches, swirl marks, stains and blemishes
- Safely restores a deep rich gloss to the treated area
- Can rejuvenate dull or faded paintwork

PACK SIZE & PART NUMBER

CRC • Tottle 200ml - 9220



MOTO Chain Lubricant

CRC MOTO Chain Lubricant is a high-quality general-purpose chain lubricant with exceptional adhesive qualities. Its anti-fling properties make it ideal for even the harshest conditions.

- On-road formula
- Lubricates & protects
- Ideal for gears sprockets, chain and sliding parts
- Compatible with O, X & Z rings

PACK SIZE & PART NUMBER

CRC • Aerosol 400ml - 1752431



MOTO Chain Wax

CRC MOTO Chain Wax is formulated to provide long lasting, heavy duty protection and lubrication. Its waxy formula makes it ideal for street and off-road use and allows it to continue performing in sand, mud, and other harsh conditions.

- Off-road formula
- Lubricates & protects
- Ideal for gears, sprockets, chain and sliding parts
- O, X & Z ring compatible

PACK SIZE & PART NUMBER

CRC • Aerosol 400ml - 1752432



MOTO Brake & Chain Cleaner

CRC MOTO Brake & Chain Cleaner is a fast-drying formula that quickly and safely removes grease, oil, brake fluid and other contaminants from brake parts and all other mechanical equipment without disassembly.

- Degreases brakes & chains
- Removes built up oil & grime
- Fast drying
- Non-chlorinated solvent

PACK SIZE & PART NUMBER

CRC • Aerosol 400ml - 1752434



MOTO Silicone Shine

CRC MOTO Silicone Shine provides a professional bike shine and reduces dirt adhesion, meaning your bike stays cleaner for longer.

- Professional bike shine
- Quick and easy to use
- Fast drying
- Protects rubber from cracking and aging

PACK SIZE & PART NUMBER

CRC • Aerosol 400ml - 1752433



MOTO Metal Polish

CRC MOTO Metal Polish refurbishes metal to its original shine, cleaning, polishing and protecting in one easy step.

- Refurbishes metal to its original shine
- Safe on aluminium, stainless steel, chrome, pewter, brass, copper, silver and all other bright-work components
- Provides long lasting shine and protection
- If used regularly - can prevent future tarnishing & corrosion

PACK SIZE & PART NUMBER

CRC • Tottle 200ml - 1752436



MOTO Plastic Polish

CRC MOTO Plastic Polish restores lustre and shine to plastic surfaces while removing discolouration, stains, light scratches, and hazing.

- Safe to use on most plastic surfaces including bug shields, instrument clusters, helmet visors, safety goggles, head and taillights

PACK SIZE & PART NUMBER

CRC • Tottle 200ml - 1752430



MOTO Quick Wash

CRC MOTO Quick Wash effortlessly creates a deep shine on paint, chrome & plastic.

- Waterless bike wash
- Spray on, wipe off
- Polishes, shines & protects
- Provides long lasting protection
- Two easy steps - spray on, wipe off
- Removes dust, finger prints and minor swirls effortlessly

PACK SIZE & PART NUMBER

CRC • Trigger 500ml - 1752435



AUTOMOTIVE



Engine Start

CRC Engine Start helps rapid initial start up for all slow-to-start diesel and petrol engines (both two-stroke and four-stroke).

- Significantly reduces the energy required for immediate combustion
- Easy and convenient to use
- Useful for cold or humid conditions
- Protects vital engine parts – guards against expensive maintenance and engine breakdowns

PACK SIZE & PART NUMBER

CRC • Aerosol 400ml - 5040



Fuel Stabiliser

CRC Fuel Stabiliser keeps stored petrol fresh for easy starting next season and optimum performance year-round.

- Great for boats, cars, motorcycles, chainsaws, lawnmowers, farm and garden equipment and more
- Preserves petrol stability
- Prevents gum & resin build-up
- Protects internal engine components and fuel system from corrosion

PACK SIZE & PART NUMBER

CRC • 350ml - 2815



Fast Motor Flush

CRC Fast Motor Flush cleans the inside of engine and oil pan prior to carrying out an oil change.

- Cleans engine and oil pan of sludge, gum and varnish build-up
- Allows oil to flow freely from all parts of the engine
- Helps free sticky valves and rings

PACK SIZE & PART NUMBER

CRC • 350ml - 5208



Fuel Injector Cleaner

CRC Fuel Injector Cleaner removes deposits from injector pintles to allow for better flow and more efficient operation.

- Removes deposits from injector pintles to allow for better flow and more efficient operation
- Cleans carburettors, intake systems, valves, ports and fuel lines
- Disperses water
- Safe for use with leaded & unleaded fuel
- Will not harm catalytic converters or oxygen sensors

PACK SIZE & PART NUMBER

CRC • 350ml - 5036



Diesel Injector Cleaner

CRC Diesel Injector Cleaner is specifically designed to clean injectors in modern diesel engines and keep them clean.

- Cleans injectors and keeps them clean
- Restores the essential spray volume necessary for the smooth operation of the engine
- Prevents power loss and injector fouling

PACK SIZE & PART NUMBER

CRC • 350ml - 5327



Mass Air Flow Sensor Cleaner

CRC Mass Air Flow Sensor Cleaner is a safe and effective way to clean delicate Mass Air Flow (MAF) sensors in modern vehicles.

- Cleans & protects MAF Sensors – will not damage MAF sensors or housing (unlike other chemicals)
- Plastic safe & residue-free – evaporates in seconds
- Improves air/fuel Ratio
- Improves fuel economy

PACK SIZE & PART NUMBER

CRC • Aerosol 400ml - 5093



GDI Intake Valve & Turbo Cleaner

CRC GDI Intake Valve & Turbo Cleaner removes carbon build-up commonly found on the backs of Intake Valves and Turbos in all types of petrol powered engines.

- Increases power & torque
- No intake manifold disassembly required
- Stabilises rough idle
- Improves fuel economy

PACK SIZE & PART NUMBER

CRC • Aerosol 400ml - 5095



Clean-R-Carb

CRC Clean-R-Carb is an effective in-place carburettor cleaner that removes deposits of gum, varnish, lacquer, resin paraffin, metallic salts, oil, oxides, tar and gasoline stains.

- Dissolves carburettor deposits
- Restores engine power
- Maximises fuel economy
- Cleans without disassembly

PACK SIZE & PART NUMBER

CRC • Aerosol 500ml - 5081



Throt-L-Body Cleaner

CRC Throt-L-Body is an effective blend of liquid hydrocarbon cleaning compounds specifically formulated to remove and prevent harmful deposits from throttle bodies and air intake systems in fuel-injected vehicles.

- Removes and prevents build-up of harmful throttle body deposits
- Restores engine performance
- Improves fuel economy
- Safe on coatings, sensors, o-ring seals

PACK SIZE & PART NUMBER

CRC • Aerosol 500ml - 5077



Gasket Stripper

CRC Gasket Stripper is a powerful formulation that quickly and easily removes tough bonded gaskets and most types of gasket adhesives and sealants regardless of age or adhesive resistance.

- Fast acting – dissolves gasket cement within minutes
- Instantly softens old gasket cement for quick removal
- Does not damage metal components

PACK SIZE & PART NUMBER

CRC • Aerosol 300g - 5021



Fuel Saver Twin Pack

The fuel saver pack is the easiest single use pack with everything you need to remove harmful dirt and gum accumulation from a vehicle's air intake system, improving fuel economy and horsepower.

- CRC Mass Air Flow Sensor Cleaner is a safe and effective way to clean delicate MAF sensors in modern vehicles
- CRC Throt-L-Body is specifically formulated to remove and prevent harmful deposits from throttle bodies and air intake systems in fuel-injected vehicles

PACK SIZE & PART NUMBER

CRC • Aerosol 350ml - 5999



Disc Brake Quiet

CRC Disc Brake Quiet is an elastomeric multi-polymer compound specially formulated to protect and lubricate critical brake parts. It stops disc brake noises and increases brake life.

- Easy to apply
- Resists hot and cold water wash-off
- Resists high temperature sling-off
- Prevents rust and corrosion

PACK SIZE & PART NUMBER

CRC • Aerosol 255g - 5017



Battery Maintenance

CRC Battery Maintenance penetrates, neutralises and loosens acid corrosion deposits, electrolytes, dirt and moisture from battery terminals and surfaces.

- Spray on - wipe off
- Resists moisture
- Neutralises battery acid
- Assures maximum battery current flow
- Eliminates energy loss & reduces voltage leakage

PACK SIZE & PART NUMBER

CRC • Aerosol 300g - 5097



Battery Terminal Protector

CRC Battery Protector is designed to protect battery terminals from corrosion, the leading cause of battery failure and to maintain the batteries peak performance level.

- Provides long lasting protection to extend battery life
- Provides a dry, lead free protective coating that prevents metal contacts from corroding
- Fast drying

PACK SIZE & PART NUMBER

CRC • Aerosol 300g - 5098



ADOS Auto Body Filler

ADOS Auto Body Filler is a versatile medium weight filler specially formulated for general automotive filling. It fills dents, chips, scrapes, cracks, and rust holes.

- High quality finish on a variety of surfaces - car bodies, boats, trailers, caravans
- Quickly and easily fills dents, scrapes, chips, cracks, and rust holes
- Can be sanded, filled and painted

PACK SIZE & PART NUMBER

CRC • 500ml - 7013 • 1L - 7014



Maniseal Exhaust Cement

CRC Maniseal Exhaust Cement is a sodium silicate based sealer for mufflers and tailpipes that resists high temperatures. It expands and sets when heated, ensuring a perfect seal against carbon monoxide and other noxious fumes.

- Bridges gaps and imperfections in exhaust clamping areas
- Seals out poisonous fumes
- High temperature resistance – up to 300°C
- Ready to use, no mixing required

PACK SIZE & PART NUMBER

CRC Brown: • Tube 145g - 5061 • Cartridge 530g - 5063
Black: • Tube 145g - 5064 • Cartridge 530g - 5066



Cream Hardener

CRC Cream Hardener for use with the following:

- 7066 - Fibre filler 3.5L
- 7111 - Cyclone body filler 3.5L
- 7006 - Plastic Putty 3.5L
- 7076 - Builders Fill 3L

PACK SIZE & PART NUMBER

CRC • Tube 25ml - 7091 • Tube 75ml - 7093



Sta-Lube Anti-Seize Engine Assembly Lube

Sta-Lube Anti-Seize Engine Assembly Lube provides protection from scoring, galling and seizing on all types of engines during the installation and assembly of parts as well as the critical 5 to 10 second period of initial engine start-up and break-in.

- Contains a high percentage of moly & graphite
- High Timken OK load rating – contains extreme pressure additives (EP)
- Water resistant – resists washout to prolong performance

PACK SIZE & PART NUMBER

CRC • 10oz - 3331



Cyclone Body Filler

CRC Cyclone Body Filler is a high-grade polyester-based cream premium body filler suitable for many applications.

- Excellent adhesion
- Top-quality tack-free finish
- Easy sand formula - will not clog sandpaper, making sanding easier and quicker
- Ideal for repairing damage to steel, aluminium and fibreglass panels in automobiles, boats and planes

PACK SIZE & PART NUMBER

CRC • 3L - 7111



FiberLock Head Gasket Repair

Permanently fixes and repairs – head gaskets, engine blocks, cooling systems, cylinder heads

- Nanotechnology reinforced with military-strength fibres for a superior permanent repair
- Cool-X conditioner – for lower operating temperatures and improved heat transfer
- Easy pour-in formula

PACK SIZE & PART NUMBER

CRC • 946ml - 1224



AUTO AC PRO CLEANER



Professionally cleans auto air conditioners

Cleans & sanitises AC systems
Destroys mold & bacteria
Long lasting protection
Eliminates odours

More about the product
scan the QR code!



Professionally Cleans Auto Air Conditioners
Cleans & Sanitises AC systems
Destroys Mold & Bacteria
Long Lasting Protection
Eliminates Odours
Includes 45cm Extension Hose
470g/500ml



OFFICIAL PARTNER

MICHAEL PICKENS RACING





FOOD GRADE



GREENLIGHT™

FOOD SAFETY PROGRAM

ASSISTS AUDIT COMPLIANCE

REDUCING RISK WITH CRC

At CRC we understand the food industry, whether growing, producing, and processing or packaging requires the most stringent conformity of compliance.

We also understand that a range of maintenance products is no longer enough, that is why we have not only developed 30 MPI, NZ AsureQuality & NSF products, manufactured to the same high standard that has made CRC a worldwide leader in MRO maintenance, but we have also developed our exclusive CRC GREENLIGHT Food Safety Program, developed to reduce the risk of incident when conducting maintenance during production.

CRC is a certified supplier of MPI & NZ AsureQuality endorsed food safe products.

MPI & NZ AsureQuality are national local governing bodies which have strict guidelines in place for identifying and managing risk and, when central to an active food safety programme, can provide vendors, the public and government bodies with a high degree of comfort that food safety is being taken seriously and well managed.

MPI Approved ✓
(All Animal Product Except Dairy)

NZ AsureQuality Approved ✓
Food, Beverage, Dairy



The **CRC GREENLIGHT** Food Safety Program can simplify or improve on your current QA auditing programs through the introduction of:

- The CRC range of MPI and NZ AsureQuality approved maintenance products
- On-site central point for audit documentation - SDS, PDS, MPI, NZ AsureQuality and allergen certificates
- A visual food safety identification program through wall and cupboard signage, and posters
- Site survey and assessment
- On-going updates to ensure you remain at the highest level of regulatory compliance
- Inventory assessment & management with an aim to reduce costs



Food Grade Silicone

A multi-purpose dry film silicone lubricant for use on food processing and handling equipment. It forms a colourless, odourless film that does not attract dust and product debris. It lubricates and protects in most metal and non-metal applications without damaging treated surfaces or leaving marks or stains.

FEATURES AND BENEFITS

- Dry film – does not attract dust and product debris
- Excellent release and parting agent
- General lubricant for all surfaces
- Resists moisture – stays in place in damp environments
- Wide temperature range – effective from -40°C to +200°C
- 360° valve – can be sprayed from any position even upside down

APPLICATIONS

Food processing & handling equipment, chutes, guides, rails, conveyors, bottling machinery, slicers, ovens, freezers, knives, saws, coin mechanisms, linkages, locks, pulleys, timers, rubber seals, tools, vending machines and ceramic insulators. Excellent release and parting agent – Horticultural and other food handling and sorting lines, product will not stick to equipment.



MPI Approved C15
(All Animal Product Except Dairy)

NZ Asure Quality Approved
Food, Beverage, Dairy



PACK SIZE & PART NUMBER

• Aerosol 284g - 3043 • 4L - 3042 • 20L - 3041



Food Grade 5-56

An effective and efficient multi-use product that penetrates, lubricates and loosens rusted parts, prevents corrosion and displaces moisture. The highly refined white mineral oil forms a thin film that lubricates moving parts for smooth action and silences annoying squeaks and squeals. Superior penetrating power breaks through rust and corrosion, loosens rusted parts, displaces water from wet equipment and cleans away scale and dirt.

FEATURES AND BENEFITS

- Lubricates moving parts for smooth action – silences annoying squeaks and squeals
- Penetrates quickly – breaks away rust and corrosion, frees components bonded by dirt and scale
- Eliminates the need for many disassembly operations
- Leaves protective thin film that clings to surfaces – ongoing protection against corrosion

APPLICATIONS

Recommended for use on all food processing and handling equipment directly exposed to food products. Chutes, guides, rails, conveyors, bottling machinery, fridges, freezers, scales, fans, carts, galleys, fillers, ovens, stoves, racks, cooking appliances.



MPI Approved C15
(All Animal Product Except Dairy)

NZ Asure Quality Approved
Food, Beverage, Dairy

PACK SIZE & PART NUMBER

• Aerosol 400ml - 3003



Food Grade Penetrating Oil

An industrial strength, low viscosity penetrant designed to quickly loosen and free seized, bound or frozen fasteners on all food processing equipment. The low surface tension penetrating oil formula creeps into cracks, seams, threads and joints with great efficiency and loosens rusted and corroded nuts, bolts, couplings, fittings, hinges and frozen components.

FEATURES AND BENEFITS

- General, non-silicone penetrant for use on all food processing equipment
- Corrosion inhibiting – lubricating residue prevents further corrosion
- Eases disassembly of mechanical equipment, fittings and fixtures
- 360° valve – can be sprayed from any position even upside down
- Effective from -20°C to +150°C (continuous), +170°C (intermittent)

APPLICATIONS

Food processing equipment directly exposed to food products including scales, fans, carts, galleys, bottlers, chutes, conveyors, racks, ovens, stoves, fillers, mixers, freezers, rails and cooking appliances.



MPI Approved C15
(All Animal Product Except Dairy)

NZ Asure Quality Approved
Food, Beverage, Dairy



PACK SIZE & PART NUMBER

• Aerosol 312g - 3086



Food Grade Machine Oil

A highly refined machine oil engineered to provide exceptional lubrication characteristics and high levels of wear and corrosion protection. For use in circulation systems lubricating gears and bearings on all food processing equipment.

FEATURES AND BENEFITS

- Excellent wear protection – Improved gear and bearing performance
- Non silicone
- Will not harm wood, metal, plastic or painted surfaces
- Non-toxic, colourless, odourless, tasteless
- 360° valve – can be sprayed from any position even upside down
- Effective from -20°C to +150°C (continuous), +170°C (intermittent)
- High flash point – provides increased user safety

APPLICATIONS

Food processing equipment directly exposed to food products including scales, fans, carts, galleys, bottlers, chutes, conveyors, racks, ovens, stoves, fillers, mixers, freezers, rails and cooking appliances.



MPI Approved C15
(All Animal Product Except Dairy)

NZ Asure Quality Approved
Food, Beverage, Dairy



PACK SIZE & PART NUMBER

• Aerosol 312g - 3092



Food Grade Synthetic Lube

A synthetic multi-purpose lubricant designed for high temperature applications in the food industry and equipment directly exposed to food products like baker's ovens, stoves and racks. The blend of synthetic lubricating fluids forms a colourless, odourless and tasteless film that is effective even under the harshest conditions outperforming traditional wet lubricating oils.

FEATURES AND BENEFITS

- Extreme temperature range – effective from -40°C to +350°C
- Extreme pressure lube – TIMKEN OK Load 18kg (40lb)
- Durable – reduces downtime for scheduled maintenance
- Will not dry out, become sticky, gum up or wash off with water
- Does not contain silicone, acid, kerosene or petroleum distillates
- Solvent free

APPLICATIONS

Lubricates food processing and handling equipment directly exposed to food products used with high temperatures. Excellent mould release and parting agent. Recommended for food packaging machinery – does not attract airborne paper/ cardboard particles or product debris.



MPI Approved C15
(All Animal Product Except Dairy)

NZ Asure Quality Approved
Food, Beverage, Dairy

PACK SIZE & PART NUMBER

• Aerosol 400ml - 3362



Food Grade Dry Lube

A technically advanced multi-purpose dry film lubricant that is applied wet, and cures to a dry, non-staining micro thin film of submicron PTFE particles. It penetrates and bonds to metal, wood, rubber, plastic, glass and most other surfaces and provides long lasting lubrication where conventional wet film lubricants are difficult to apply or retain.

FEATURES AND BENEFITS

- Temperature range from -20°C to +250°C
- Cures to a thin dry film of PTFE particles – for excellent long-lasting lubrication
- Resists dust and product debris build-up – ideal for food processing and packaging machinery

APPLICATIONS

Lubricates food processing and handling equipment used with high temperatures – ovens, stoves, racks, chutes, guides, rails, conveyors, bottling machinery, fridges, freezers. Excellent mould release and parting agent – horticultural and other food handling and sorting lines, product will not stick to equipment. Recommended for food packaging machinery – does not attract airborne paper/cardboard particles or product debris.



MPI Approved C15
(All Animal Product Except Dairy)

NZ Asur eQuality Appr oved
Food, Beverage, Dair y

PACK SIZE & PART NUMBER

• Aerosol 400ml - 3101



Food Grade Chain Lube

A special blend of synthetic lubricants and mineral oil, designed to keep roller drive and conveyor chains lubricated. It is specifically designed to provide the convenience of aerosol application where incidental food contact may occur. Food Grade Chain Lube penetrates, lubricates and protects moving parts by reducing friction and wear. Regular use will help inhibit corrosion, reduce load stress and greatly extend chain life.

FEATURES AND BENEFITS

- Foaming action – for outstanding penetration and coverage
- No messy overspray
- Formula contains anti-wear properties to extend chain life
- Penetrates, lubricates, protects – low viscosity formula creeps deep between wire strands, chain links, pins, rollers and sprockets

APPLICATIONS

Recommended for use as a lubricant and corrosion inhibitor on conveyor chains, packaging equipment, hoist chains, link and roller assemblies, forklift trucks and many other industrial applications.



MPI Approved C15
(All Animal Product Except Dairy)

NZ Asur eQuality Appr oved
Food, Beverage, Dair y



PACK SIZE & PART NUMBER

• Aerosol 340g - 3091



Food Grade White Chain & Drive Lube

An extreme pressure lubricant formulated with PTFE for heavy-duty lubrication of chains, pins and sprockets. The high viscosity lubricant with excellent adhesive properties forms a tough film that remains in place during extreme wear without risking contamination of food and other clean environments.

FEATURES AND BENEFITS

- Temperature range from -20°C to +170°C
- Formulated with PTFE – extreme pressure lubricant
- Durable heavy duty lubrication – repels moisture, resists wash off
- Excellent adhesive properties – remains in place
- Corrosion protection – lengthens chain and sprocket life
- For effective lubrication of all types of chain and conveyor systems
- 360° valve – can be sprayed from any position even upside down

APPLICATIONS

Food processing & handling equipment, chutes, guides, rails, conveyors, bottling machinery, slicers, ovens, freezers, knives, saws, coin mechanisms, linkages, locks, pulleys, timers, rubber seals, tools, vending machines and ceramic insulators.



MPI Approved C15
(All Animal Product Except Dairy)

NZ Asur eQuality Appr oved
Food, Beverage, Dair y

PACK SIZE & PART NUMBER

• Aerosol 400ml - 3100



Food Grade Heavy Chain & Meat Rail Lube

A unique synthetic penetrating gel specifically formulated to provide a clean, odourless lubricant for high-pressure and high-temperature applications. It contains friction modifiers, anti-wear additives and tacking agents, does not drip off or fling off at high speed and resists hot and cold wash-off for long-lasting protection.

FEATURES AND BENEFITS

- Odourless, clear
- Penetrating gel – penetrates on application, evaporates very quickly within 5 to 10 seconds and sets as a gel-like grease
- High resistance to fling-off at high speeds and temperatures
- Water proof. Splash proof. Salt water proof
- High pressure resistant – remains active under high pressure loads, resists impacts of vibrations and shock load conditions

APPLICATIONS

Meat rails, gambrel skids, overhead chain operations, normal chain operations, sliding doors, hoists, conveyors (also overhead conveyors), coupling mechanisms, forklifts, overhead door drives and more.



MPI Approved C15
(All Animal Product Except Dairy)

NZ Asur eQuality Appr oved
Food, Beverage, Dair y

PACK SIZE & PART NUMBER

• Aerosol 500ml - 1752351



Food Grade Anti-Seize Compound

A premium anti-seize compound with PTFE, specifically formulated for use in applications where incidental food contact is possible. It tenaciously adheres to metal surfaces providing protection from destructive metal to metal contact on sliding or rotational contact surfaces. It prevents seizure, galling and heat freeze on all types of engines during the installation and assembly of parts and facilitates fast and easy disassembly.

FEATURES AND BENEFITS

- Extreme temperature range – effective from -53°C to +980°C
- Tenaciously adheres to metal surfaces – protection during installation and assembly of parts
- Facilitates fast and easy disassembly – time saving
- PTFE fortified

APPLICATIONS

Recommended for use on all types of food processing machinery to lubricate fittings, bushings, flanges, headers, nuts, screws, studs, threaded surfaces, pipes, plugs, and manifolds to prevent seizing and galling of surfaces.



MPI Approved C15
(All Animal Product Except Dairy)

NZ Asur eQuality Appr oved
Food, Beverage, Dair y



PACK SIZE & PART NUMBER

• Brush-Top Bottle 227g - 35905



Food Grade CO Contact Cleaner

An evaporating precision cleaner designed to remove light contaminants from electrical and electronic equipment in the food industry. It removes light oils, dust, dirt and finger prints from electrical connectors, printed circuit boards, relays, switches, scales, timers and other equipment. It evaporates quickly, leaves no residue and is safe to use on all plastics. Regular use will help prevent electrical failures, increase performance and prolong equipment life.

FEATURES AND BENEFITS

- Leaves no residue – prevents harmful build-up on equipment and eliminates wiping and rinsing
- Fast evaporation – minimizes downtime
- Plastic safe
- Non-corrosive
- 360° valve – can be sprayed from any position even upside down

APPLICATIONS

For cleaning and degreasing electronic and electrical components such as connectors, terminals, plugs, jacks, printed circuit boards, switch boards, potentiometers, laboratory and test equipment used in food processing and other clean environments.



MPI Approved C22
(All Animal Product Except Dairy)

NZ Assurance Quality Approved
Food, Beverage, Dairy

PACK SIZE & PART NUMBER

• Aerosol 400ml - 3102



Food Grade Contaminant & Label Release

Designed to remove adhesives, dirt, grease, oils, and other contaminants from machinery and electrical components in the food industry. Penetrates and evaporates quickly leaving a thin, non-conductive film that protects surfaces from re-contamination.

FEATURES AND BENEFITS

- Non-toxic, non-staining, colourless, low odour
- Penetrates and evaporates quickly
- Plastic-safe
- Prevents re-contamination
- Removes dirt, grease, oils & adhesives

APPLICATIONS

Recommended for removing labels and adhesives from food processing equipment where the possibility of incidental contact with food may occur.



MPI Approved C26
(All Animal Product Except Dairy)

NZ Assurance Quality Approved
Food, Beverage, Dairy

PACK SIZE & PART NUMBER

• Aerosol 400ml - 3103



EXOFF Food Grade Degreaser & Parts Cleaner

An extra heavy duty degreaser and parts cleaner formulated to penetrate and dissolve tough grease, oil and contaminants for easy removal – safely. Formulated with high performance cleaning technology to be powerful; pH neutral; safe on surfaces, users and the environment.

FEATURES AND BENEFITS

- Powerful
- Biodegradable
- Non-toxic
- pH Neutral
- Non-corrosive
- Solvent free
- Non-flammable
- Contains rust inhibitors

APPLICATIONS

Food processing equipment, motors, tools, filters, grills, rollers, dies, moulds (injection, plastic, steel, aluminum), chains, conveyors, robotics, hoists, and suitable for benches, cleaning walls, floors and more.



MPI Approved C31
(All Animal Product Except Dairy)

NZ Assurance Quality Approved
Food, Beverage, Dairy

PACK SIZE & PART NUMBER

• 750ml - 3420 • 20L - 3423



Food Grade Silicone Grease

A thin non-curing silicone grease. It insulates valves, electrical contacts, spark plugs, battery terminals and fasteners from moisture and protects against corrosion. It is resistant to oil, water and chemicals and will not harden, freeze, dry or melt.

FEATURES AND BENEFITS

- Seals, lubricates, protects, insulates and waterproofs
- Safe on most rubber and plastics
- Contains no metals
- Temperature resistant – maintains performance level year round. Will not harden, freeze, dry or melt due to temperature fluctuations
- Wide temperature range – effective from -40°C to +200°C

APPLICATIONS

Designed for sealing, lubricating and waterproofing o-rings and other rubber and plastic parts used in food processing equipment. O-Rings, spark plugs, fasteners, battery terminals, electrical contacts, valves, gaskets.



MPI Approved C15
(All Animal Product Except Dairy)

NZ Assurance Quality Approved
Food, Beverage, Dairy

PACK SIZE & PART NUMBER

• Tube 75ml - 3037 • 500ml - 3039



Food Grade Dielectric Grease Select A Bead

A thin, non-curing silicone compound that helps maintain electrical performance by reducing line sag, arcing, voltage drops and problems caused by adverse weather conditions. It also provides an exceptional lubricant for fasteners used to support temporary electrical work. It improves electrical performance during adverse conditions such as rain, fog, salt spray and temperature extremes.

FEATURES AND BENEFITS

- Temperature resistant. Maintains performance level year round. Will not harden, freeze, dry or melt due to temperature fluctuations
- Rubber and plastic safe. Will not degrade seals, gaskets or plastic insulators
- The CRC Select-a-Bead™ nozzle allows for easy control of silicone bead width for smooth, uniform dispensing from start to finish

APPLICATIONS

O-rings, valves, pistons, gaskets, guides, slide and switching mechanisms, electrical panels, disconnects, electrical contacts, spark plugs, battery terminals, fasteners, scoreboards, transformers, rubber and plastic parts.



MPI Approved C15
(All Animal Product Except Dairy)

NZ Assurance Quality Approved
Food, Beverage, Dairy



PACK SIZE & PART NUMBER

• Aerosol 94g - 3079



Food Grade Multi-Purpose Grease

A tenacious, NLGI 2 white grease providing superior lubrication and durability in food production and processing applications. It is designed for effective lubrication and protection of ball, roller and plain bearings that operate under high loads and temperatures, and require a long grease life.

FEATURES AND BENEFITS

- Highly resistant to moisture, water and detergent – will not wash off when equipment is cleaned after wash-down resistant
- Wide temperature range – effective from -35°C to +149°C
- Non-toxic, odourless, tasteless
- Protects against rust and corrosion
- Excellent adhesion - resists sling-off

APPLICATIONS

FOR USE BY – Bakeries, bottlers, breweries, canneries, dairies, egg processors, meat and poultry processors and pharmaceutical manufacturers
 FOR USE ON – Dryers, gears, valves, pumps, winches, conveyors, fittings, linkages, wire ropes, hoists, rollers, cams, slide bearings, o-rings.



MPI Approved C15
(All Animal Product Except Dairy)

NZ AsureQuality Approved
Food, Beverage, Dairy



PACK SIZE & PART NUMBER

• Cartridge 397g - 35600



Food Grade Synthetic Grease

A NLGI 2 translucent, non toxic lubricating grease that provides effective lubrication and protection of ball, roller, and plain bearings and sliding surfaces. It protects equipment against rust, oxidation and wear. Due to its high dropping point, it is particularly useful in high temperature applications. This product also performs extremely well in cold temperature applications as the base fluid exhibits a very low pour point.

FEATURES AND BENEFITS

- Water wash-down resistant
- Wide temperature range -29°C to +176°C
- Protects equipment against rust, oxidation and wear
- Suitable for ball, roll and plain bearings and sliding surfaces

APPLICATIONS

FOR USE BY - Dairy plants, breweries, canneries, meat processing plants, food processing and handling equipment, fish processing plants, carton/packaging equipment, pharmaceutical manufacturers etc
 FOR USE ON - Ball, roller and plain bearings, and sliding surfaces, gears, valves, pumps, conveyors, fittings, linkages, hoists, o-rings.



MPI Approved C15
(All Animal Product Except Dairy)

NZ AsureQuality Approved
Food, Beverage, Dairy



PACK SIZE & PART NUMBER

• Cartridge 397g - 35610



Food Grade Extreme Duty Grease

A NLGI 2, tan, high performance lubricating grease that provides effective lubrication and protection of ball, roller, and plain bearings and sliding surfaces. It excels in applications where resistance to water, broad operating temperatures, and high loads are absolutely necessary. Provides unsurpassed resistance to oxidation and corrosion including salt spray. It is resistant to moisture, water and detergent wash down. Has exceptional mechanical stability even in the presence of water. It is non toxic and contains no heavy metals or other environmentally undesirable additives.

FEATURES AND BENEFITS

- Exceptional mechanical stability even in the presence of water
- Timken OK Load 29.5kgs
- Wide temperature range from -29°C to +205°C
- Moisture, water and detergent wash-down resistant
- Unsurpassed resistance to extreme pressures, oxidation and corrosion, including salt spray

APPLICATIONS

FOR USE BY - Dairy plants, breweries, canneries, meat processing plants, food processing and handling equipment, fish processing plants, carton/packaging equipment, pharmaceutical manufacturers etc
 FOR USE ON - Ball, roller and plain bearings, and sliding surfaces, gears, valves, pumps, conveyors, fittings, linkages, hoists, o-rings.



MPI Approved C15
(All Animal Product Except Dairy)

NZ AsureQuality Approved
Food, Beverage, Dairy



PACK SIZE & PART NUMBER

• Cartridge 397g - 35615



Food Grade White Grease

A high purity, high quality synthetic grease, with an advanced additive package that provides superior lubrication, durability, corrosion protection, film strength, and excellent water and heat resistance. Convenient aerosol application allows for lubricating hard-to-reach areas.

FEATURES AND BENEFITS

- Excellent adhesion resists throw-off and shear breakdown
- Can be built up with several layers for improved waterproofing
- White coloration – easy visual film check
- 360° valve – can be sprayed from any position even upside down
- Non-toxic, mild odourless, tasteless
- Wide temperature range – effective from -17°C to +230°C

APPLICATIONS

Lubricate hinges, latches, overhead door tracks, open gears and chains, cables, slide conveyors, guide rails and bearings. Also used for corrosion protection for machinery, tools, and equipment.



MPI Approved C15
(All Animal Product Except Dairy)

NZ AsureQuality Approved
Food, Beverage, Dairy



PACK SIZE & PART NUMBER

• Aerosol 284g - 3038



ADOS Food Grade Silicone Sealant

A low modulus silicone joint sealant with 100% neutral cure. This highly flexible sealant contains additives to resist mould and mildew, with excellent adhesion to plastics, ceramics, stainless steel, metals and glass. It is specially formulated for use in food, pharmaceutical and other clean environments where MPI certification is required, ideal for refrigerated rooms or household and other commercial uses.

FEATURES AND BENEFITS

- Works on wet & dry surfaces
- Highly flexible with excellent adhesion
- Mould & mildew resistant
- Waterproof seal

APPLICATIONS

Ideal for use in food, pharmaceutical and other clean environments where MPI certification is required. Excellent adhesion to plastics, ceramics, stainless steel, metals glass, aluminium, kitchen and bathroom fixtures, porcelain, showers, sinks, tiles.



MPI Approved C82
(All Animal Product Except Dairy)

NZ AsureQuality Approved
Food, Beverage, Dairy

PACK SIZE & PART NUMBER

• 300g Titania - 3314 • 300g White - 3310 • 300g Translucent - 3312



SmartWasher®

PRODUCT GUIDE



BE SAFE BE SMART

PROTECT YOUR TEAM AND THE ENVIRONMENT

The CRC SmartWasher® is a bioremediating parts washing system designed to clean parts and equipment during repair and maintenance operations - safely. The system combines 3 essential components – the SmartWasher® parts washer, the OzzyJuice® cleaning fluid, and the OzzyMat® filter that contains a proprietary blend of microbes.

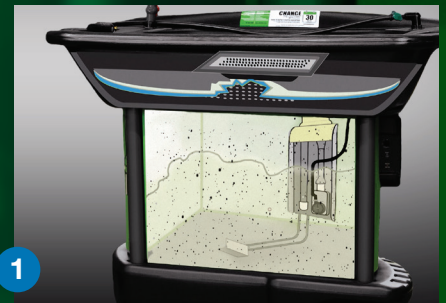
The SmartWasher® heats and circulates the OzzyJuice® and the OzzyJuice® cleans the parts. The OzzyMat® releases the microbes into the cleaning fluid to break down and eat oil, grease and carbon-based contaminants, creating a self-cleaning system that does not generate hazardous waste.

The SmartWasher® system harnesses the power of nature to deliver exceptional cleaning performance while also eliminating the need to handle or dispose of hazardous waste, making it a safer choice over manual solvent or aqueous-based parts washers.

WHAT IS BIOREMEDIATION?

Bioremediation is the use of microbes to break down and “eat” oil, grease, and carbon-based contaminants. This proven biotechnology is used to assist in the clean-up of wastewater treatment ponds and lagoons in petroleum refineries and industrial manufacturing facilities all around the world.

- 1 Oil contaminants enter the solution as parts are washed.
- 2 Surfactant in OzzyJuice® solution emulsifies the oils.
- 3 Emulsified oil is eaten by the Ozzy® microbes.
- 4 Oil is converted into water and carbon dioxide.



CERTIFICATION & APPROVALS

The SmartWasher® system is a safe and highly-effective alternative to manual solvent and aqueous-based parts washers. It is eco-friendly and makes operations better and safer for the user and the environment. All OzzyJuice® solutions used in the SmartWasher® are non-hazardous, non-corrosive, pH-neutral, non-flammable, non-toxic and non-caustic. When used in accordance with directions, the SmartWasher® system does not generate hazardous waste or potential for cradle to grave legal liability.

Clean Air Solvent Certificate

OzzyJuice® products certified “Clean Air Products” by SCAQMD (South Coast Air Quality Management District).

Meets US EPA Safer Product Standards

OzzyJuice® SW-4 and OzzyBooster® Microbial Enhancer have been awarded the SAFER CHOICE label and seal of approval by the EPA.

OzzyJuice® Food Industry Approvals for food, NZ AsureQuality – Approved for food, beverage, dairy including dairy factories.

MPI - APPROVED C31.

NSF - Approved A1 All fluids.

OzzyJuice® Defence Force Approvals

NSN - National Stock Numbers
NSN numbers for Defence Forces available upon request.

CRC **SmartWasher®**
BIOREMEDIATING parts washing system

✓ High-Performance Cleaning

- ✓ Non-Hazardous
- ✓ Non-Flammable
- ✓ Non-Corrosive
- ✓ Non-Polluting



www.smartwasher.com

Made in U.S.A. Manufactured by ChemFree Corporation, A Subsidiary of CRC Industries.
Copyright © 2017 ChemFree Corporation. All Rights Reserved. ChemFree, SmartWasher, OzzyMat, Ozzy, OzzyBoost, and the Ozzy design are registered trademarks and/or trademarks of ChemFree Corporation.



NSF is a registered trademark of NSF International.



AsureQuality

THE PERFORMANCE ADVANTAGE

It works! CRC SmartWasher® is effective, even on the toughest carbon, grease, gunk and oils.



Exceptional Cleaning Power

Meets or exceeds the cleaning performance of manual solvent and aqueous parts washers



Self-Cleaning Solution

The bioremediation process keeps the fluid clean and ready to use



Mobile Options

Save time by bringing the washer to the parts instead of the parts to the washer

THE COST ADVANTAGE

When you compare traditional parts washers against the CRC SmartWasher®, the savings are clear.



Less Spending

No ongoing purchase of solvent cleaners



Minimized Waste

No changing or hauling away of cleaning fluid



No Contracts

Eliminates hazardous waste removal contracts



Lower Liability

No cradle to grave legal liability



THE SAFETY ADVANTAGE



A CRC SmartWasher® delivers exceptional cleaning without any of the health risks associated with solvent and aqueous-based parts washers. It's safer for you and for the environment.



Bioremediating Microbes

Naturally Occurring and Non-Pathogenic



OzzyJuice® Cleaning Fluids

Non-Irritating and Environmentally-Friendly



Safer For Employees

No Contact with Harmful Solvents



Safer for the Environment

No Hazardous Waste



FLEXIBLE FAUCET

Bendable design allows user to aim fluid stream directly at greasy, dirty parts.



THE OZZYMAT®

The microbe-infused mat traps particulate matter larger than 50 microns. It is disposable and easy to change. The microbes in the mat are activated when used with OzzyJuice®. Change mat every 30 days for optimal performance.



RECIRCULATING PUMP

Sump action recirculates system fluid and microbes through machine.

INDUSTRIAL HEATER

Built-in heater keeps fluid at a comfortable 40° C. The heat can also be set to 46° C.



FLOW-THROUGH BRUSH

Scrub away grease and oil with the durable brush.

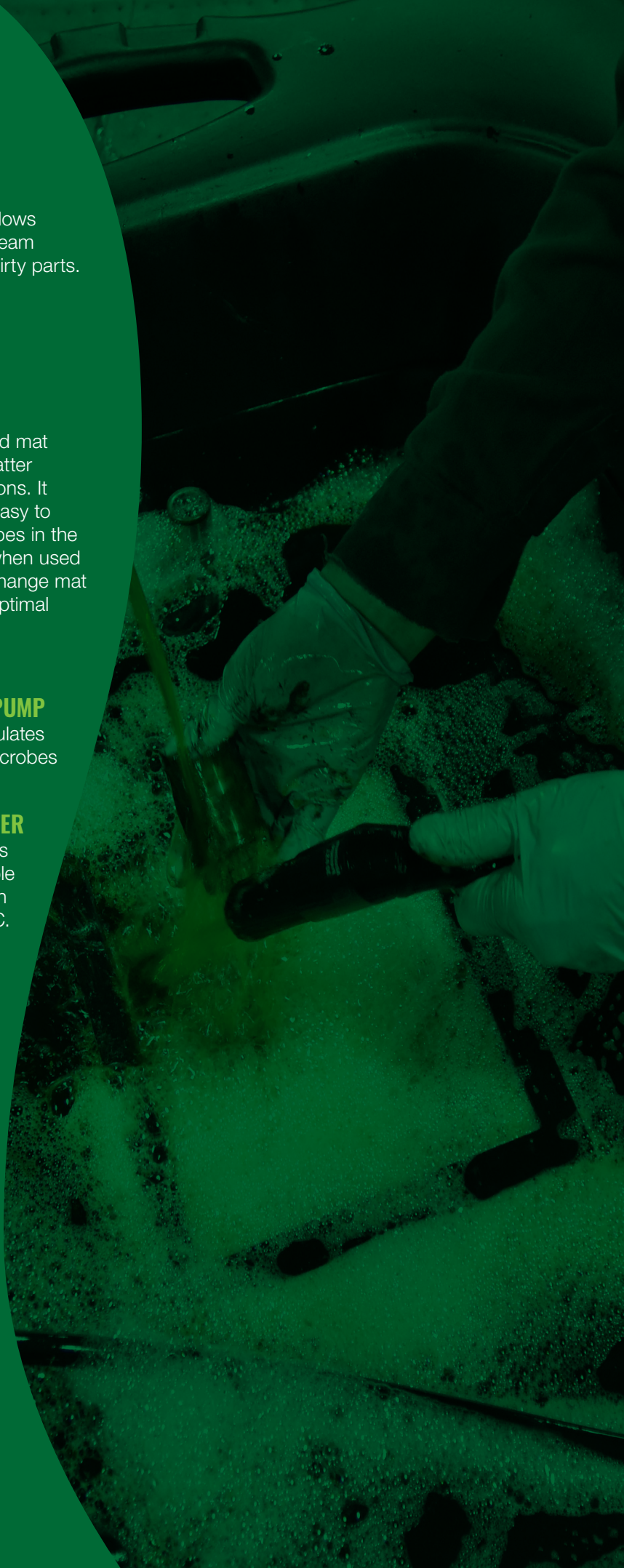


CONTROLLER

On/Off switch for pump flow.

Green light power is on.

Red light is on the fluid level is low.



THE SMARTWASHER RANGE

SmartWasher® startup kits ship completely assembled with three OzzyMats® and enough OzzyJuice® to get started and keep going for three months.

SW-23 MOBILE PARTS WASHER

SW-23 - Fits every application with its unique design, large sink size, mobility and amazing features. It includes an extra long angled brush/hose for those hard to reach places and a customised dolly with a footstep that makes it really easy to move around.

| | |
|------------------------|-------------------------------------|
| Overall Dimensions | 1092mm (L) x 686mm (W) x 1067mm (H) |
| Inside Sink Dimensions | 686mm (L) x 584mm (W) x 203mm (H) |
| Capacity | 70 L |
| Load Capacity | 180 kg |
| Parts Washer Structure | Heavy-Duty HOPE |
| Controls | Toggle Switch |
| Pump Capacity | 19 L per minute |
| Adjustable Thermostat | 40 to 46°C |
| Flow Control Timer | 10 Minutes |
| Certified | ETL (UUCSA), CE, NSF |
| Initial Fill | 60 L |



SW-23 OPTIONAL STARTUP KIT

| CONTAINS | GRC CODE | GRC DESCRIPTION |
|--|----------|-----------------------------|
| 1 x SW-23 SmartWasher® system, 5 x OzzyJuice® 20L, 3 x FL-4 OzzyMat™ | SW-23 | SW-23 (Machine only) |
| | SW-23-4 | STARTER KIT SW-23 SW-4 FL-4 |
| | SW-23-8 | STARTER KIT SW-23 SW-8 FL-4 |



SW-37 HEAVYWEIGHT PARTS WASHER

SW-37 - Tough enough for the big jobs, it has an enormous 454 kg load capacity, moves easily through the workshop area on a mobile dolly or can stay in one place with locking casters and provides a large, oversized sink to accommodate large and small parts.

| | |
|------------------------|-------------------------------------|
| Overall Dimensions | 1219mm (L) x 889mm (W) x 1143mm (H) |
| Inside Sink Dimensions | 838mm (L) x 685mm (W) x 203mm (H) |
| Capacity | 100 L |
| Load Capacity | 454 kg |
| Parts Washer Structure | Heavy-Duty HOPE |
| Controls | Toggle Switch |
| Pump Capacity | 19 L per minute |
| Adjustable Thermostat | 40 to 46°C |
| Flow Control Timer | 10 Minutes |
| Certified | ETL (UUCSA), CE, NSF |
| Initial Fill | 100 L |



SW-37 OPTIONAL STARTUP KIT

| CONTAINS | GRC CODE | GRC DESCRIPTION |
|--|----------|------------------------------|
| 1 x SW-37 SmartWasher® system, 6 x OzzyJuice® 20L, 3 x FL-4 OzzyMat™ | SW-37 | SW-37 (Machine only) |
| | SW-37-4 | STARTER KIT SW-37 SW-4 FL-4 |
| | SW-37-8 | STARTER KIT SW-37 SW-8 FL-4 |
| | SW-37-X1 | STARTER KIT SW-37 SW-X1 FL-4 |



SW-25 SIGNATURE PARTS WASHER

SW-25 - Fits every budget and has everything you need in a manual parts washer and then some: toggle switch controls, a flow control timer, adjustable thermostat, and a super capacity pump.

| | |
|------------------------|------------------------------------|
| Overall Dimensions | 991mm (L) x 737mm (W) x 1016mm (H) |
| Inside Sink Dimensions | 660mm (L) x 432mm (W) x 203mm (H) |
| Capacity | 100 L |
| Load Capacity | 227 kg |
| Parts Washer Structure | Heavy-Duty HOPE |
| Controls | Toggle Switch |
| Pump Capacity | 19 L per minute |
| Adjustable Thermostat | 40 to 46°C |
| Flow Control Timer | 10 Minutes |
| Certified | ETL (UUCSA), CE, NSF |
| Initial Fill | 100 L |



SW-25 OPTIONAL STARTUP KIT

| CONTAINS | CRC CODE | CRC DESCRIPTION |
|--|----------|-----------------------------|
| 1 x SW-25 SmartWasher® system, 6 x OzzyJuice® 20L, 3 x FL-4 OzzyMat™ | SW-25 | SW-25 (Machine only) |
| | SW-25-4 | STARTER KIT SW-25 SW-4 FL-4 |
| | SW-25-8 | STARTER KIT SW-25 SW-8 FL-4 |



SW-28 SUPERSINK PARTS WASHER

SW-28 - Bigger is better with the SuperSink Parts Washer. This model is loaded with features and includes an extra large work surface for all jobs, large and small. A second brush allows two people to work at the same time.

| | |
|------------------------|-------------------------------------|
| Overall Dimensions | 1194mm (L) x 965mm (W) x 1067mm (H) |
| Inside Sink Dimensions | 1041 mm (L) x 660mm (W) x 203mm (H) |
| Capacity | 100 L |
| Load Capacity | 227 kg |
| Parts Washer Structure | Heavy-Duty HOPE |
| Controls | Toggle Switch |
| Pump Capacity | 19 L per minute |
| Adjustable Thermostat | 40 to 46°C |
| Flow Control Timer | 10 Minutes |
| Certified | ETL (UUCSA), CE, NSF |
| Initial Fill | 100 L |



SW-28 OPTIONAL STARTUP KIT

| CONTAINS | CRC CODE | CRC DESCRIPTION |
|--|----------|-----------------------------|
| 1 x SW-28 SmartWasher® system, 6 x OzzyJuice® 20L, 3 x FL-4 OzzyMat™ | SW-28 | SW-28 (Machine only) |
| | SW-28-4 | STARTER KIT SW-28 SW-4 FL-4 |
| | SW-28-8 | STARTER KIT SW-28 SW-8 FL-4 |



THE SMARTWASHER RANGE OVERVIEW



SW-23
Mobile Parts/Brake Washer

SW-25
Signature Parts Washer

SW-28
SuperSink Parts Washer

SW-37
Mobile Heavyweight Parts Washer

| | | | | |
|------------------------------------|---|---|---|---|
| Heavy-Duty HDPE Construction | ● | ● | ● | ● |
| Electric Operated Pump (19L/min) | ● | ● | ● | ● |
| Adjustable Thermostat (40 to 46°C) | ● | ● | ● | ● |
| Toggle Switch Controls | ● | ● | ● | ● |
| On-Board Diagnostics | ● | ● | ● | ● |
| Flow Control Timer | ● | ● | ● | ● |
| Two Brush Stations | | | ● | |
| Dolly | ● | | | ● |
| Detectable Control Module | | | | ● |
| SW-X1 | | | | ● |
| Up to 180kg Load Capacity | ● | | | |
| Up to 227kg Load Capacity | | ● | ● | |
| Up to 454kg Load Capacity | | | | ● |
| Certified: ETL (UL/CSA), CE | ● | ● | ● | ● |

POWERFUL AND EFFICIENT CLEANING



OZZYJUICE® DEGREASING/CLEANING SOLUTION

WHAT IS OZZYJUICE®?

OzzyJuice® is a powerful, aqueous-based degreasing/cleaning solution that is pH-neutral, non-irritating, non-flammable, and non-hazardous. Armed with superior cleaning capability, OzzyJuice® solutions will match or surpass the performance of premium solvents without the associated risks. All OzzyJuice® solutions are NSF A1 Registered.

OZZY® MICROBES KEEP THE OZZYJUICE® CLEAN AND STRONG.

Microbes (Ozzy®), introduced into the SmartWasher® system through the OzzyMat®, eat the grease, oil and other contaminants, creating the harmless by-products of carbon dioxide and water.

CLEAN OZZYJUICE® MEANS CLEAN PARTS.

The OzzyJuice® degreasing/cleaning solution cleans dirty parts and the Ozzy® microbes clean the OzzyJuice®, leaving it strong and clean for every use. If the unit is maintained according to the operating instructions, you should never need to haul away dirty cleaning fluid again.

| PART NO# | DESCRIPTION |
|----------|--|
| SW-4 | SW-4 Heavy Duty Degreasing Solution 20L |
| SW-8 | SW-8 Aircraft, Weapons and Select Metals 20L |
| SW-X1 | SW-X1 High-Performance Degreasing Solution 20L |



SW-4



SW-8



SW-X1

| OZZYJUICE DEGREASING/CLEANING SOLUTIONS | | SW-4 | SW-8 | SW-X1 |
|---|------------------------|--------------------------------|---|--------------------------------------|
| APPLICATION | | HEAVY DUTY DEGREASING SOLUTION | SELECT METALS, AIRCRAFT & WEAPONS DEGREASING SOLUTION | HIGH-PERFORMANCE DEGREASING SOLUTION |
| 20 LITRE PAIL | | SW-4 | SW-8 | SW-X1 |
| CONTAMINANT TYPE | Crude Oil | excellent | good | superior |
| | Hydraulic Trans. Fluid | excellent | excellent | superior |
| | Motor Oil | excellent | excellent | superior |
| | Solder & Flux | excellent | good | superior |
| | Bearing Grease | excellent | good | superior |
| | Automotive Grease | excellent | excellent | superior |
| | Resin Products | excellent | excellent | superior |
| | Fifth Wheel Grease | excellent | good | superior |
| | Creosote | excellent | good | superior |
| | Impacted Grease | excellent | good | superior |
| | Animal Fat | excellent | fair | excellent |
| | Automotive Varnish | good | good | superior |
| | Burned-On Carbon | excellent | good | superior |
| | Cutting Oils | good | good | superior |
| Ink/Toner | good | fair | good | |
| Asphalt | good | fair | good | |

FOR USE IN MANY DIFFERENT INDUSTRIES



OZZYMAT®

FL-4 MULTI-LAYER OZZYMAT®

Designed for applications with normal to heavy usage, the FL-4 Multi-Layer OzzyMat® has (4) white layers and (1) blue layer. The white layers on the mat trap any particulate larger than 50 microns and should be peeled away once a week for optimum performance. The blue layer is the support structure that contains the microbes (Ozzy®) and delivers them into the system. These microbes (Ozzy®) migrate from the OzzyMat® into the OzzyJuice®, located in the SmartWasher® tank, and break down oil and grease.



| PART# | DESCRIPTION |
|-------|--|
| FL-4 | FL-4 OzzyMat® Multi-Layer Fluid Activation Mat |

OZZYBOOSTER®

OzzyBooster® is a microbial enhancer that can be used to enhance or “boost” microbial activity in the SmartWasher® system; it increases the density of Ozzy® (microbes) within the OzzyJuice®. When a machine is overused, there may be a need for extra microbes to help ease the load.

| PART# | SIZE | UNITS/CS |
|-------|--------------|----------|
| OZBST | 250ml Bottle | 6 |

OZZY APPLE SCENT®

An odor neutraliser that treats entire unit to reduce or eliminate any odors which may occur from standard parts washing.



| PART# | SIZE | UNITS/CS |
|--------------|--------------|----------|
| 3335-SCENT-4 | 125ml Bottle | 1 |

OZZYBRUSHES®

ANGLED BRUSH WITH BUTTON

Angled brush with flow control button on the handle. Standard brush on SmartWasher® models SW-23 and SW-37. OzzyJuice®, located in the SmartWasher® tank, and break down oil and grease.



STRAIGHT BRUSH REPLACEMENT

Straight flow through brush. Standard brush on SmartWasher® models SW-25 and SW-28.

| PART# | DESCRIPTION |
|-------------|----------------------------|
| 1675-BRANDB | Angled Brush with Button |
| 1685-BRUSH | Straight Brush Replacement |

SINK COVERS

Heavy-duty woven fabric withstands industrial and shop environments to keep dust and dirt out of the SmartWasher® sink.

| PART# | DESCRIPTION | |
|---------------|--|--|
| 1130-SWCOV-23 | Cover for SmartWasher® SW-23 Mobile Parts Washer | |
| 1130-SWCOV-25 | Cover for SmartWasher® SW-25 Signature Parts Washer | |
| 1130-SWCOV-28 | Cover for SmartWasher® SW-28 SuperSink Parts Washer | |
| 1130-SWCOV-37 | Cover for SmartWasher® SW-37 Mobile Heavyweight Parts Washer | |



- OzzyJuice® stays clean and efficient
- Eliminates unwanted dust and debris
- Reduces evaporation of OzzyJuice®



SmartWasher®

SALES & SERVICE SUPPORT

CRC operates a dedicated customer care support line, available to you and your customers:

Ph 09 272 2700

Email: swtechsupport.anz@crcind.com

www.crc.co.nz/smart-washer

We run an end-user customer contact programme ensuring optimal SmartWasher® system operation, regular maintenance, new product updates and consumable sales through your business.

We provide a warranty registration programme and on going sales support for you and your customers.

OUR COMMITMENT TO YOU

“To assist businesses in retaining the lifetime value of their correctly operating SmartWasher® system.”



Brakleen®

RANGE

Brakleen®



ORIGINAL

5089

600g

Brakleen® BLASTER



BLASTER

5087

600ml

Brakleen® WB



WATER BASED

1751843

500ml

Brakleen® NF



NON-FLAMMABLE

5082

550g

Brakleen® NC



NON-CHLORINATED

5084

525ml

Brakleen® FAST DRY



FAST DRY

5083

600ml

Original heavy-duty formula

Superior cleaning and degreasing properties

IDEAL FOR:
General purpose cleaning and degreasing of brake, clutch and mechanical equipment

High pressure spray to cut through hard to move contaminants

Extreme grease penetration

IDEAL FOR:
Thick build ups and hardened deposits in heavy mechanical equipment

Water based, solvent free biodegradable and non-flammable

Safer for the workshop and the environment

IDEAL FOR:
Lighter equipment and regulatory compliance

Non-flammable
Quick cleaning and evaporating

IDEAL FOR:
Where fire safety protection is imperative

Lower toxicity
Safer for use on most joints and mechanical parts containing rubber or plastics

IDEAL FOR:
Use in confined spaces

Super fast evaporating

Minimises downtime

IDEAL FOR:
Time sensitive jobs



PHONE 09 272 2700 **Fax** 09 274 9696

EMAIL customerservice.nz@crcind.com

ADDRESS 10 Highbrook Drive, East Tamaki, Auckland, New Zealand

WWW.CRC.CO.NZ