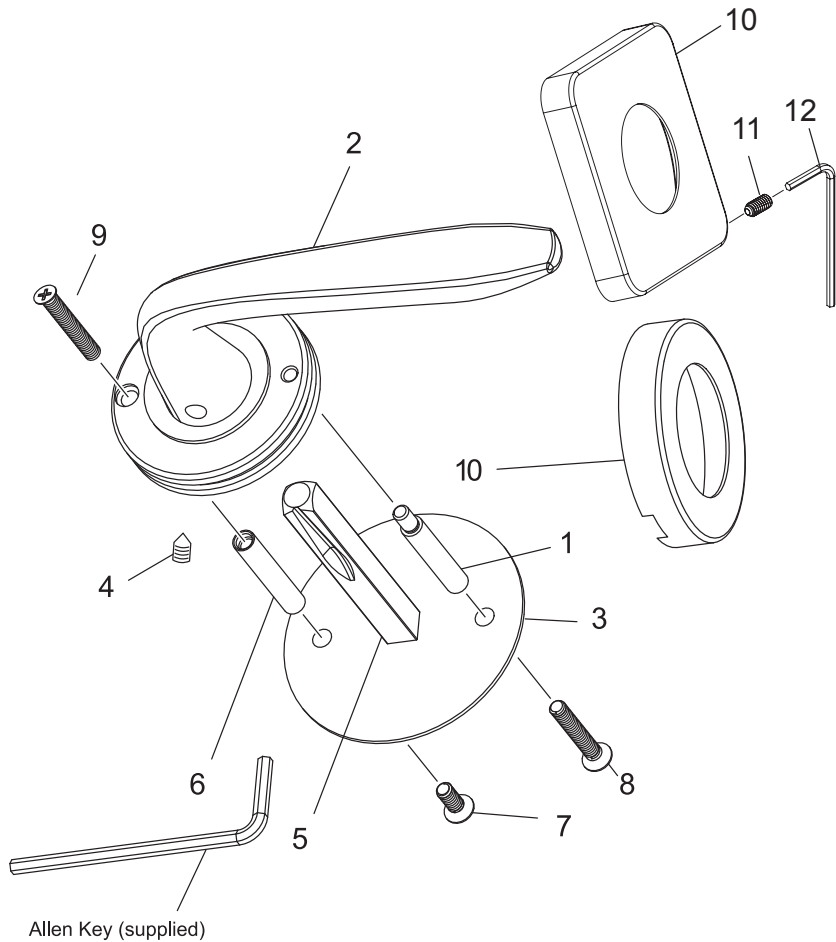


Installation Instruction for Choice Series Dummy Trim Lever

Steps

- Drill one 15mm hold (using spade bit) and two 6mm holes (using drill bit) at required distance (backset) from door edge – refer to template below.
- Fit the stepped threaded post (1) provided to the threaded hold in the underside of the lever handle assembly (2)
- Temporarily fit the dummy fixing plate (3) into the lever handle assembly, ensuring both the handle grub screw (4) and spindle groove (5) point to the floor. (This will allow you to identify the hold opposite the fixed stepped threaded post to which the threaded ferrule (6) will be fixed to in the next step)
- Now holding only the dummy fixing plate, fix the threaded ferrule to the previously identified hole in the fixing plate using the 10mm long screw (7) provided
- Fit the dummy fixing plate to the door, and fit the lever handle assembly onto the spindle and nip the grub screw, ensuring handle grub screw and groove of the fixing plate spindle point to the floor
- Fit the 25mm screw (8) through the fixing plate and into the stepped threaded post. Now fit the 30mm long special headed screw (9) through the lever handle assembly into the threaded ferrule. Loosen the grub screws, then re-tighten the grub screw.
- Slide the rosette cover (10) over the lever (ensuring notch in rosette cover is pointing to the floor) and fix into position (refer to diagram)
- For Square rosette cover, use the Allen key (12) to tighten the grub screw (11) found on the underside of the rosette



NOTE: Carefully follow these instructions when installing.
Screws to be tightened to a recommended 2.5Nm torque.

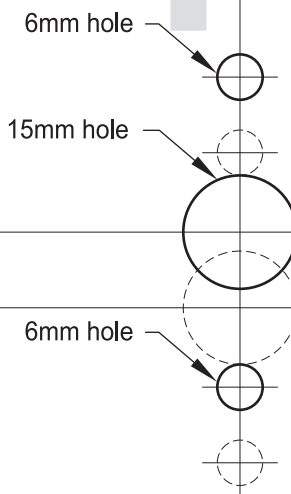


FOLD HERE

FOLD HERE

Fit here on door edge

Fit here on door edge



BACKSET 60mm (2 3/8")

BACKSET 70mm (2 3/4")



ALLEGION

1800 098 094

info.au@allegion.com
gainsboroughhardware.com.au

PRINT TO SCALE

