

Retro Active 2.0 & Patterns

Porcelain Stone®



Retro Active 2.0 & Patterns

Porcelain Stone®

Tile Worth a Double-Take

Crossville's Retro Active 2.0 is a line before its time. When you look for tile that was designed to anticipate your needs, the diverse sizing of Retro Active 2.0 gives you options you're sure to love. Design should reach in all directions to exceed expectations. We developed Retro Active 2.0 to include the best-selling colors and in-demand sizes with a bold new finish option. 13 colors reflect a warm and cool neutral palette with exciting bright tones to enliven the mix, including super white and black. Design with 8 sizes in polished and unpolished finishes and our complementary linear texture pattern pieces while gaining the benefits of thru-body tile.

Retro Active 2.0 pattern tiles, also in 13 colors, work in tandem or on their own to give dimension in a perfectly parallel presentation for a look of wainscoting, embellishment, or unique touch of texture.

Retro Active 2.0—an evolution that is so remarkably versatile, fresh yet classic, you'll wonder where this tile has been all your life. Ideal for any indoor application and exterior covered walls.

With Retro Active 2.0, you get

- New pattern texture for linear look
- Cross-Sheen® finish for easy cleaning
- Complementary 2 x 4 mosaic



RET07 ▶ Leaden 6 x 24 UPS

RET08 ▶ Mercurial 12 x 12 UPS



RET05 ▶ Snow Blind 12 x 12 PO
RET13 ▶ Royal Navy 12 x 12 PO

Color Palette

Available Colors - UPS and Polished



RET01 ▶ Antico Taupe UPS/PO



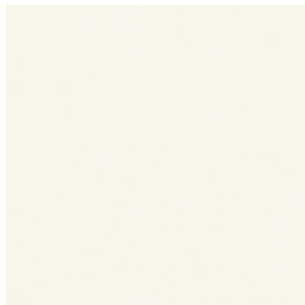
RET02 ▶ Seal Taupe UPS/PO



RET03 ▶ Featherstone UPS/PO



RET04 ▶ Empress White UPS/PO



RET05 ▶ Snow Blind UPS/PO



RET06 ▶ Roasted Chestnut UPS/PO



RET07 ▶ Leaden UPS/PO



RET08 ▶ Mercurial UPS/PO



RET09 ▶ Phantom UPS/PO



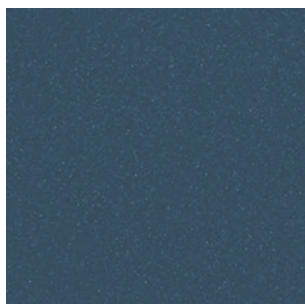
RET10 ▶ Armor UPS/PO



RET11 ▶ Gulf Breeze UPS/PO



RET12 ▶ Racing Green UPS/PO



RET13 ▶ Royal Navy UPS/PO

Available Patterns Colors



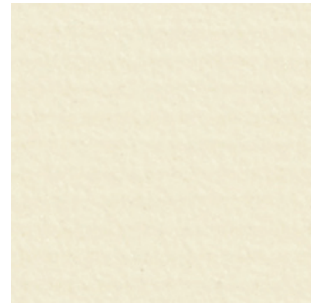
RET01 ▶ Antico Taupe PTN



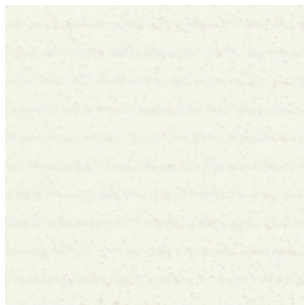
RET02 ▶ Seal Taupe PTN



RET03 ▶ Featherstone PTN



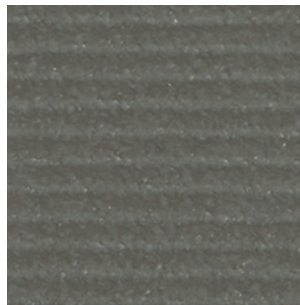
RET04 ▶ Empress White PTN



RET05 ▶ Snow Blind PTN



RET06 ▶ Roasted Chestnut PTN



RET07 ▶ Leaden PTN



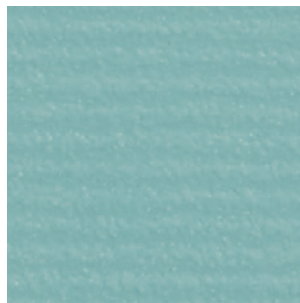
RET08 ▶ Mercurial PTN



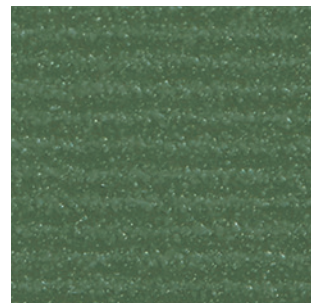
RET09 ▶ Phantom PTN



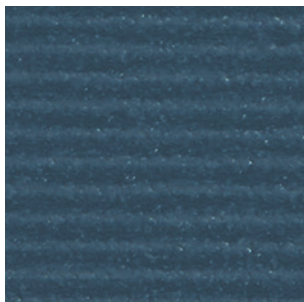
RET10 ▶ Armor PTN



RET11 ▶ Gulf Breeze PTN



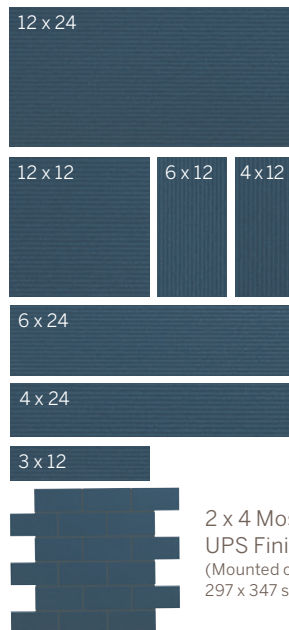
RET12 ▶ Racing Green PTN



RET13 ▶ Royal Navy PTN

Specifications

Sizes (Shown in RET13)



Sizes & Finishes

Field Tile

Available in all colors

Nominal (in)	Actual (in)	Thickness (in)	Grout Joint (in)	Finish
3 x 12 [†] *	2-3/4 x 11-3/4	5/16	3/16	UPS/PO/PTN
4 x 12 [†] *	3-3/4 x 11-3/4	5/16	3/16	UPS/PO/PTN
4 x 24 [†] *	3-3/4 x 23-3/4	5/16	3/16	UPS/PO/PTN
6 x 12 [†] *	5-3/4 x 11-3/4	5/16	3/16	UPS/PO/PTN
6 x 24 [†] *	5-3/4 x 23-3/4	5/16	3/16	UPS/PO/PTN
12 x 12	11-3/4 x 11-3/4	5/16	3/16	UPS/PO/PTN
12 x 24	11-3/4 x 23-3/4	5/16	3/16	UPS/PO/PTN

Crossville recommends a grout joint of 3/16 inch.

Actual measurements stated in inches indicate tile is calibrated (non-rectified).

Actual measurements stated in mm indicate tile is rectified.

[†] These cut/bevel tile is cut from larger format tile and the edges are beveled to provide factory appearance.

*These sizes are not a standard stocking item. Please allow 2-4 weeks for delivery depending on availability.

No set-up fee or handling charge applied.

Mosaics

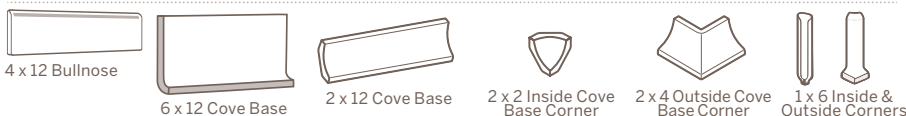
Available in all colors

Nominal (in)	Actual (in)	Thickness (in)	Grout Joint	Finish
2 x 4 Mosaic	11-3/4 x 11-3/4	5/16	3/16	UPS

*Mesh mounted on 297 x 347 sheet with 3mm grout joint. Coverage area is 0.97sf.

Coordinating Trim

Nominal (mm)	Actual (in)	Thickness (in)	Grout Joint	Finish
4 x 12 Single Bullnose	3-3/4 x 11-3/4	5/16	3/16	UPS/PO/PTN
6 x 12 Cove Base	5-7/8 x 11-3/4	3/8	3/16	UPS
2 x 12 Cove Base	1-3/4 x 11-11/16	3/8	3/16	UPS
1 x 6 Inside Corner	1 x 5-7/8	NA	3/16	UPS
2 x 2 Inside Corner	1-3/4 x 1-3/4	NA	3/16	UPS
1 x 6 Outside Corner	1 x 5-7/8	NA	3/16	UPS
2 x 4 Outside Corner	1-3/4 x 3-1/2	NA	3/16	UPS



Product Performance

Breaking Strength	>350 lbf	ASTM C648
Bond Strength	>200 psi	ASTM C482
Chemical Resistance (UPS, PTN)	Class A	ASTM C650
Chemical Resistance (PO)	Class B	ASTM C650
Frost Resistance	Resistant	ASTM C1026
Water Absorption	<0.20%	ASTM C373
Scratch Hardness	7	Mohs Scale

Wet Dynamic Coefficient of Friction Range

UPS	0.50 - 0.60	AcuTest sm
PO	0.31 - 0.41	AcuTest sm
PTN	0.42 - 0.52	AcuTest sm

Shade & Texture Index

Retro Active 2.0 has a shade variation of V1.



This porcelain tile product is produced with a V1 variation. Differences among pieces from the same production run are minimal. Inspect the product upon delivery and for best results, blend tile from several cartons during installation.

Recommended Use

Retro Active 2.0 is recommended for interior floors, walls, counter tops and exterior walls in both residential and commercial applications. **If offset pattern is required for tiles 15 inches or longer, Crossville® recommends an offset of not greater than 33%.** See CrossvilleInc.com for detailed installation instructions.

Polished Tile

For polished tiles, the use of a penetrating type sealer is required prior to grouting. Grouts should be tested to determine if the grout or grout pigment will contaminate the surface of the tile and may require more than one coating of sealer before proceeding to the entire installation.

Wet area use for Retro Active 2.0 Mosaics

Crossville® produces the Retro Active 2.0 mosaics with an unpolished finish. The AcuTestsm wet Dynamic COF of Retro Active 2.0 is $\geq .50$. Their small size ensures frequent grout joints which provides traction and drainage. Crossville cannot control situations involving incorrect installation, improper slope to the drain for elimination of standing water and poor surface cleaning.

This information is provided so that customers may make a realistic and informed decision when comparing Retro Active 2.0 to other tile products in wet area environments, such as residential/commercial bathrooms, showers, and interior pool decks.

Environmentally Conscious

Retro Active 2.0 contains a minimum of 4% pre-consumer recycled content and is manufactured by Crossville® using processes that recycle nearly 12 million pounds of previously discarded filtrate and fired tile waste. In addition to its own fired waste recycling, Crossville also accepts and recycles reclaimed, previously installed tile through its Tile Take-Back™ Program. For more information, visit CrossvilleInc.com/green.

Care and Maintenance

Regular cleaning is the best way to keep Retro Active 2.0 tile looking good for years to come. Use clean, hot water (combined with a household cleaner for more aggressive cleaning). Rinse thoroughly and dry with a soft cloth to prevent water spots. No waxes or sealers are needed. More information regarding the care and maintenance of Crossville products is available at CrossvilleInc.com.

Our Warranty

Crossville Inc guarantees that its products will meet or exceed the performance specifications outlined in ANSI A137.1-2012 and in the performance data section of the Crossville, Inc. general product catalog. For complete details check our website at CrossvilleInc.com.

Hydrotect

Our porcelain tiles are available with Hydrotect. Crossville's revolutionary invisible coating harnesses the power of light, water, and oxygen to create the best defense against dirt and pollution. Whether indoors or out, floors and walls stay cleaner, providing a superior experience in any space. For complete details check our website at CrossvilleInc.com.



Information listed here is subject to change. Please refer to CrossvilleInc.com for the latest, most accurate information.



RET07 ▶ Leaden 12 x 24 UPS

Trade Organizations



Environmentally Aware



Retro Active 2.0 & Patterns

Crossville, Inc.

PO Box 1168
Crossville, TN
38557

Phone 931.484.2110
Fax 931.456.2956
E-Mail Crossc@CrossvilleInc.com
Web CrossvilleInc.com



RET08 ▶ Mercurial 2 x 4 Mosaics and 6 x 24 UPS

RET09 ▶ Phantom 2 x 4 Mosaics

RET10 ▶ Armor 2 x 4 Mosaics

RET11 ▶ Gulf Breeze 2 x 4 Mosaics

RET12 ▶ Racing Green 2 x 4 Mosaics

RET13 ▶ Royal Navy 2 x 4 Mosaics

Cover: **RET01** ▶ Antico Taupe 12 x 12 UPS (Floor)

RET06 ▶ Roasted Chestnut 4 x 24 PTN (Wall)

