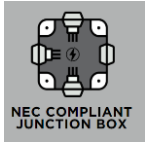


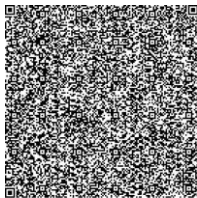
## HANFORD 3 LIGHT PENDANT

6624503

### General Product Information



WARRANTY



FCC STATEMENT

### Tools Required



### Safety Information

#### CAUTION-RISK OF FIRE

This product must be installed in accordance with the applicable installation code by a person familiar with the construction and operation of the product and the hazards involved.

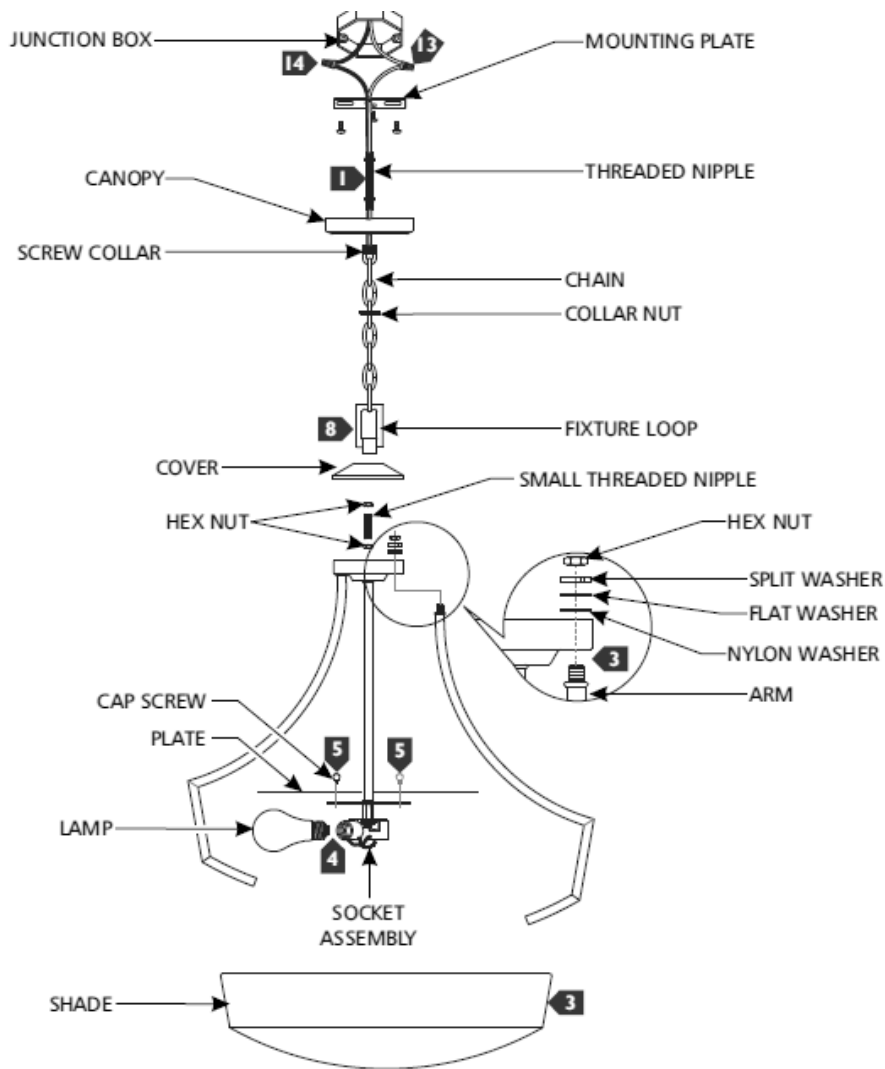
**USE MINIMUM 90°C SUPPLY CONDUCTORS.**



Turn off electrical current at the source before working with any lighting fixture or portable lamp.

Install and use this product in adherence with local electrical codes and regulations.





## INSTRUCTIONS

### I. Preparing the Fixture

1. Screw the threaded nipple to the mounting plate and screw the screw collar onto the threaded nipple.
2. Secure the mounting plate to the junction box.
3. Install two of the fixture arms to the hub using the washers and hex nuts in the order shown. Place the shade inside the fixture arms and install the remaining fixture arm to secure it in place.
4. Screw the lamps into the sockets. Refer to the label in the socket for Max Wattage Information.
5. Install the plates to the socket assembly using the cap screws.
6. Install a hex nut onto each end of the small threaded nipple and screw it to the top of the fixture.
7. Determine the desired height of the fixture and open a link with pliers to remove a portion of the chain.
8. Place the cover onto the small threaded nipple and screw the fixture loop onto the fixture. Open the chain link with pliers and install the chain onto the fixture loop. Re-close the chain link.
9. Unscrew the collar nut from the screw collar. Install the collar nut and the canopy onto the chain in that order.
10. Open a link on the other end of the chain with pliers and install the chain onto the screw collar to secure the fixture. Close the link.
11. Weave the cord through the chain, canopy, collar nut, screw collar, threaded nipple, and out of the junction box. Trim the cord, leaving enough length to make electrical connections.

## II. Wiring the Fixture

1. Safety first! Locate the circuit breaker and switch it off to cut off the power supply to the relevant circuits to ensure there's no electricity running through the wiring.
2. In accordance with local electrical codes, connect the fixture ground wire (bare copper or silver wire) to suitable ground. This may be a green ground screw on the mounting plate, which the ground wire should be tightly wrapped around, or a house wire (green or bare copper wire without insulation).
3. Twist the bare ends of the following pairs of wires together using a wire nut to secure a connection:
  - a) White fixture wire to neutral power line wire
  - b) Black fixture wire to hot power line wire
4. Neatly place all wires into the junction box, place the canopy onto the ceiling, and secure it in place by screwing the collar nut tightly onto the screw collar.