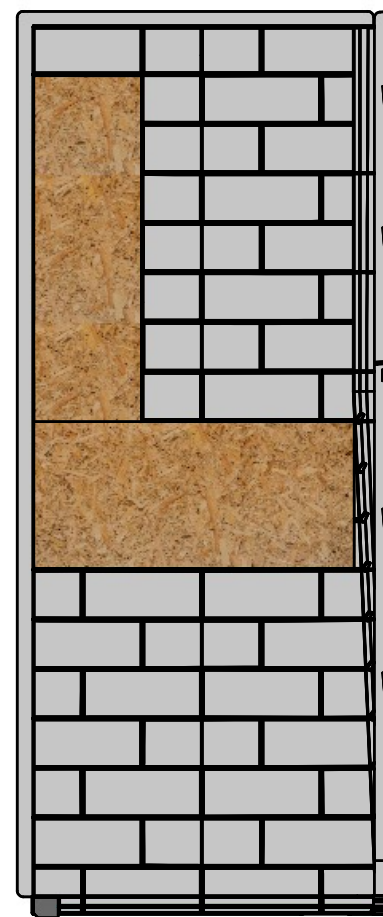


1 1/4"
ALL FLANGES

13"
STORAGE NICHE



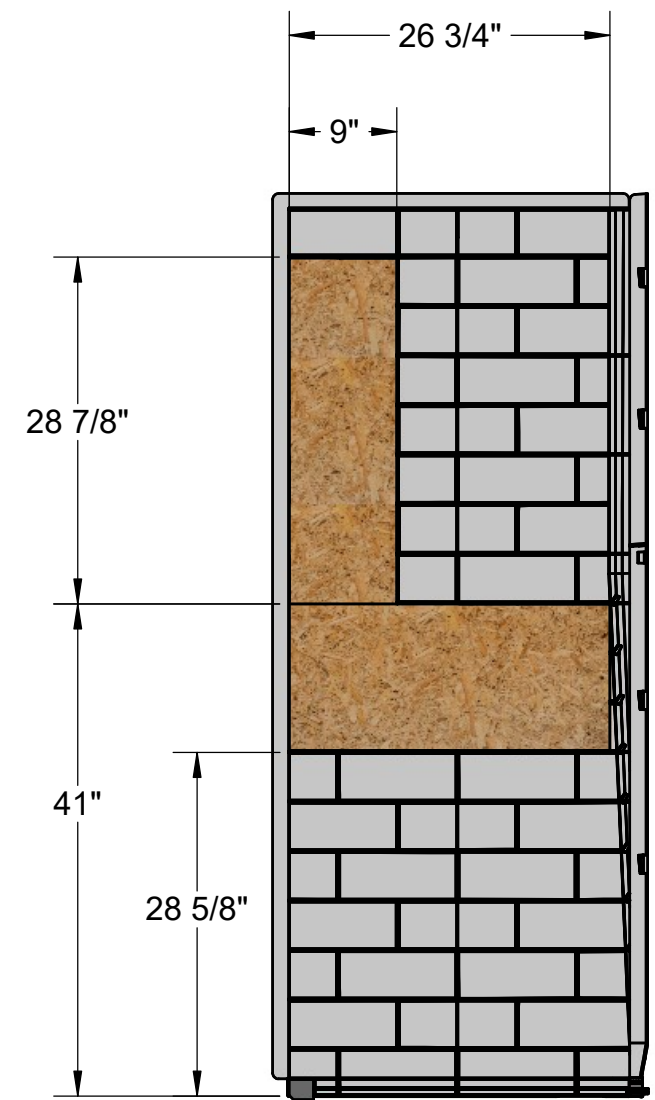
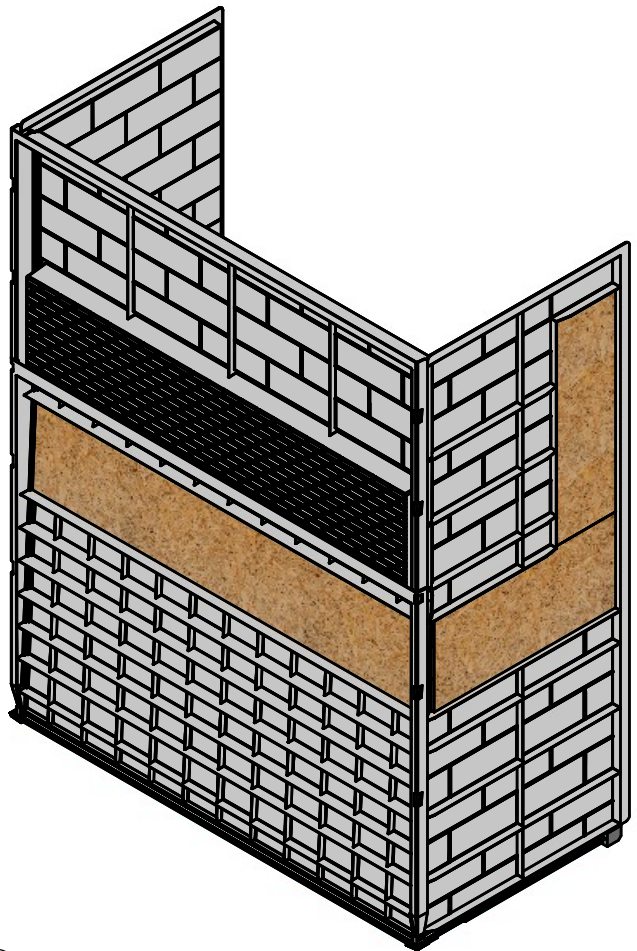
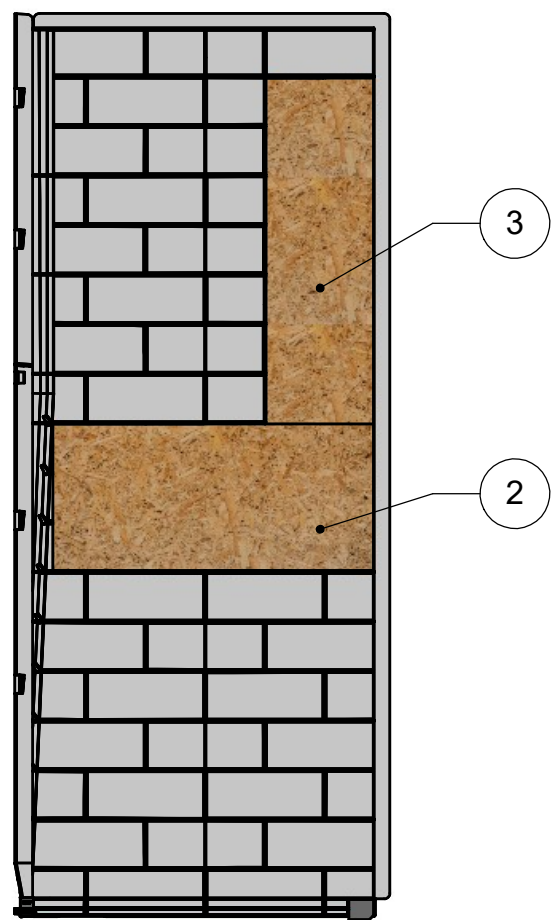
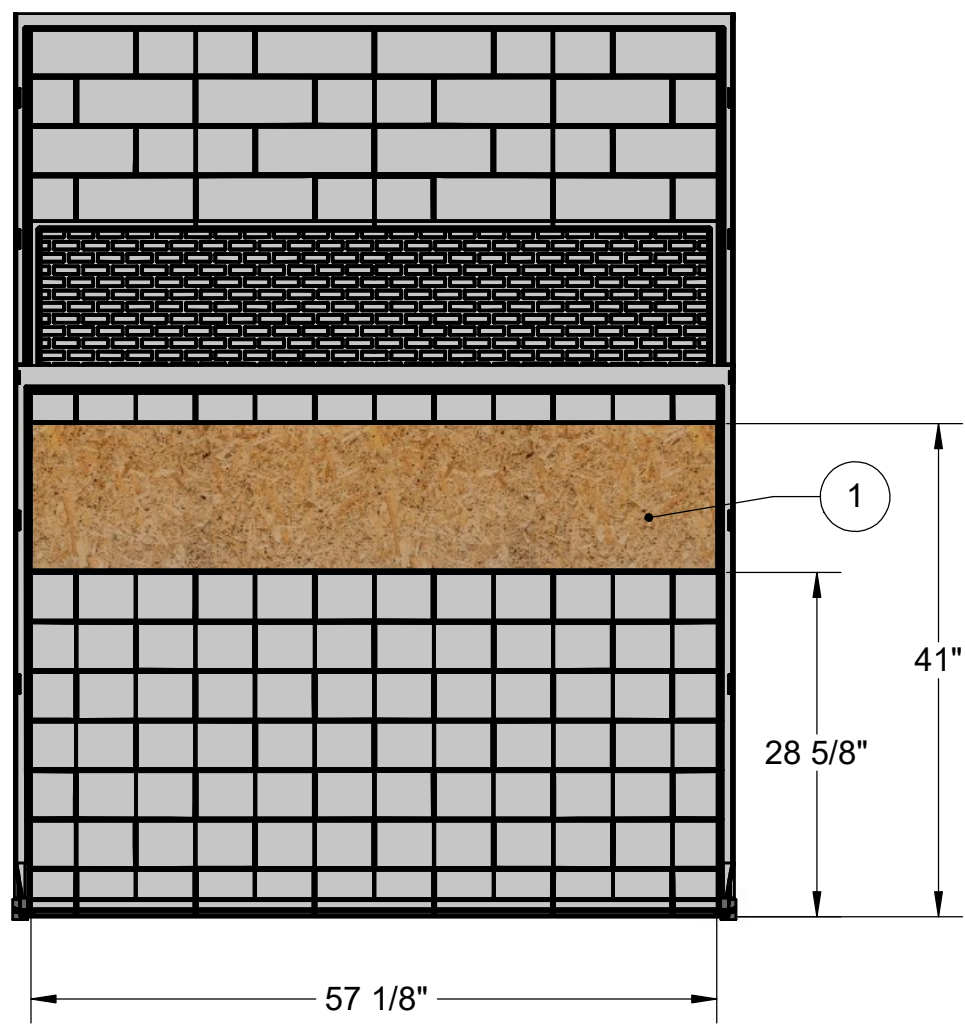
REV	MODIFICATION DESCRIPTION	BY	DATE
00	Emission-Issue data Card	MDE	2020-12-10

GENERAL TOLERANCES (Unless otherwise specified)			
	IN	MM	
X/X	±1/8	±3	
X.X	±0.125	±3	
X.XX	±0.06	±1.5	
X.XXX	±0.031	±0.79	
X.X*	±0.5*		
Inch	Max. Radi	±0.015	±0.035

TITLE: NexTile Pro Shower Wall Set 6030 FHA	
NAME	DATE
DRAWN BY MARTIN DESAULNIERS	2020-12-10
APPROVED BY MARTIN DESAULNIERS	2020-12-10
SHEET 1 OF 2	FORMAT B SCALE: 1:16
DWG. # Z041-6125-00	
REV: 00	

AMERICAN BATH GROUP, OU ENCORE L'UNE DE SES FILIALES, EST L'UNIQUE PROPRIETAIRE DE CE DOCUMENT ET DES INFORMATIONS CONFIDENTIELLES QUIL RENFERME. NIL NE PEUT EN FAIRE L'USAGE QUEL QUEL SOIT L'OBJETIF VISE. LES REPRODUCTIONS OU LES DIVULGUER, SANS LE
 DOCUMENTATION CONTAINED IN IT MAY BE USED FOR ANY PURPOSE, IN ANY MANNER, WITHOUT THE EXPRESS WRITTEN CONSENT OF AMAX CORPORATION OR ITS APPROPRIATE SUBSIDIARY.

ITEM NO.	7/16" OSB REINFORCEMENT (Height x Width)	TOTAL QTY.
1	12 1/4" x 57 1/8"	1
2	12 1/4" x 26 3/4"	2
3	28 7/8" x 9"	2



AMERICAN BATH GROUP

TITLE: NexTile Pro Shower Wall Set 6030 FHA

REV	MODIFICATION DESCRIPTION	BY	DATE
00	Emission-Issue data Card	MDE	2020-12-10

GENERAL TOLERANCES
(Unless otherwise specified)

	IN	MM
X/X	±1/8	±3
X.X	±0.125	±3
X.XX	±0.06	±1.5
X.XXX	±0.031	±0.79
X.X*	±0.5*	
Inch	±0.015	±0.035
Max. Radi	±0.015	±0.035

NAME	DATE
DRAWN BY MARTIN DESAULNIERS	2020-12-10
APPROVED BY MARTIN DESAULNIERS	2020-12-10

SHEET 2 OF 2 **FORMAT B** **SCALE: 1:16**

DWG. # Z041-6125-00 **REV: 00**

AMERICAN BATH GROUP, OU ENCORE L'UNE DE SES FILIALES, EST L'UNIQUE PROPRIETARE DE CE DOCUMENT ET DES INFORMATIONS CONFIDENTIELLES QUIL RENFERME. NIL NE PEUT EN FAIRE L'USAGE QUEL QUEL SOIT L'OBJECTIF VISE. LES REPRODUCTIONS OU LES DIVULGUERS, SANS LE CONSENTEMENT ECRIT DE AMERICAN BATH GROUP, SONT STRICTEMENT INTERDITES. THIS DOCUMENT AND ANY OF THE INFORMATION CONTAINED IN IT MAY BE USED FOR ANY PURPOSE, IN ANY MANNER, WITHOUT THE EXPRESS WRITTEN CONSENT OF AMAX CORPORATION OR ITS APPROPRIATE SUBSIDIARY.