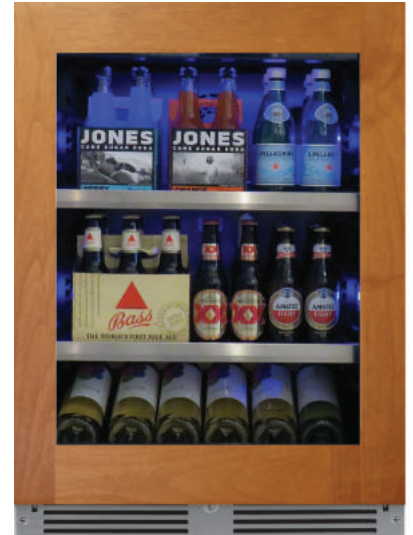




XOU24BCGO_
UNDERCOUNTER BEVERAGE CENTER
GLASS OVERLAY



Zero clearance hinges
for a flush installation

Fully extending telescoping
glass shelves let you see
everything

Tri-color interior LED lighting

24" UNDERCOUNTER BEVERAGE CENTER with OVERLAY FRAME DOOR

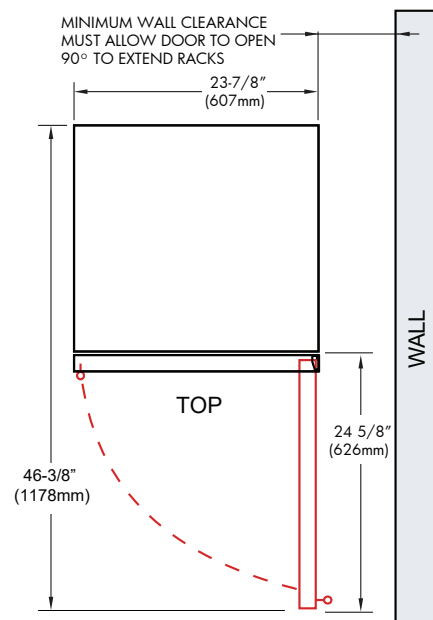
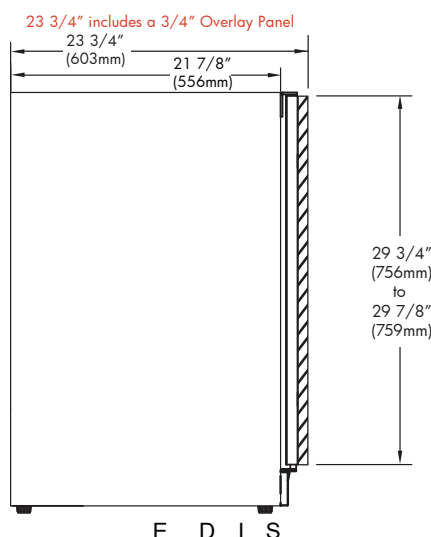
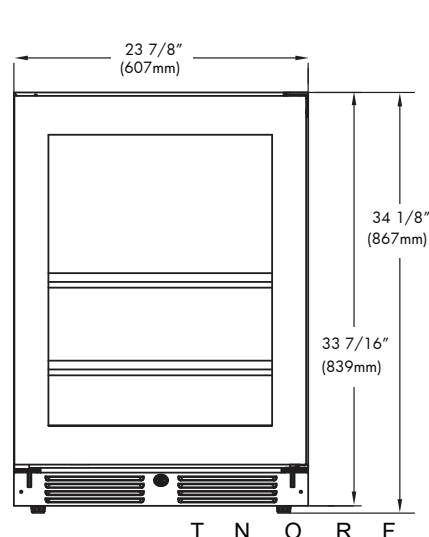
Store up to 145 (12oz) cans at a frosty 34° to 50°F and still find just what you are looking for. The clear glass shelves fully extend while fully loaded enabling you to see the entire contents at a glance. No more fumbling around or emptying the unit to find what you want.

And because beverages come in all shapes and sizes, the shelves of your XO beverage center can quickly adjust to 15 different positions.

WORLD CLASS SERVICE | COMPREHENSIVE WARRANTIES
OUR LASTING COMMITMENT TO YOU



*Specify **R** for right hand hinge - or - **L** for left hand hinge



FEATURES

CAPACITY

Full extension smooth glide racks hold 145 (12oz) cans at 34° to 50°F

Zero clearance hinges for flush integration*

Secure door lock

FEATURES

Non- reversible door - specify right or left hinge

Library quiet 39 dBA operation

Elegant tri-color interior illumination

Removable 6 bottle wine rack

Intuitive digital touch controls

6-1/2' Power Cord with low profile 90° flat plug

Low E Glass blocks harmful UV light

Alarm Functions

Energy Saver and Sabbath Mode

* Note: zero clearance hinges are visible just above and below the door panel

SPECIFICATIONS

ELECTRICAL 120V 60HZ 4.35 AMP*

DIMENSIONS H 34 1/8"
W 23 7/8"
D 23 3/4" (w 3/4" finish panel)

ROUGH IN H 34 1/4" min
W 24"
D 24"

REFRIGERANT R600A



Watch the Video on YouTube
CLICK ON THE IMAGE

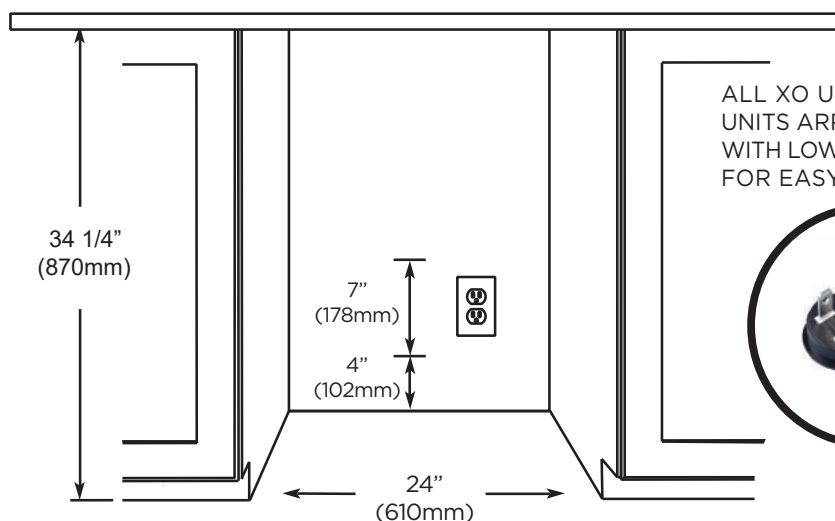
XO the next level
in luxury appliances

xoappliance.com | 800.966.8300



XO is exclusively distributed by
EASTERN MARKETING CORP.
24 Eisenhower Parkway
Roseland, NJ 07068

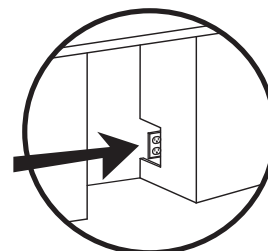
ROUGH IN DIMENSIONS



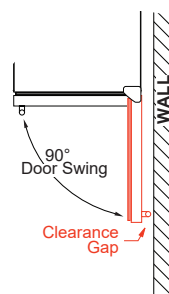
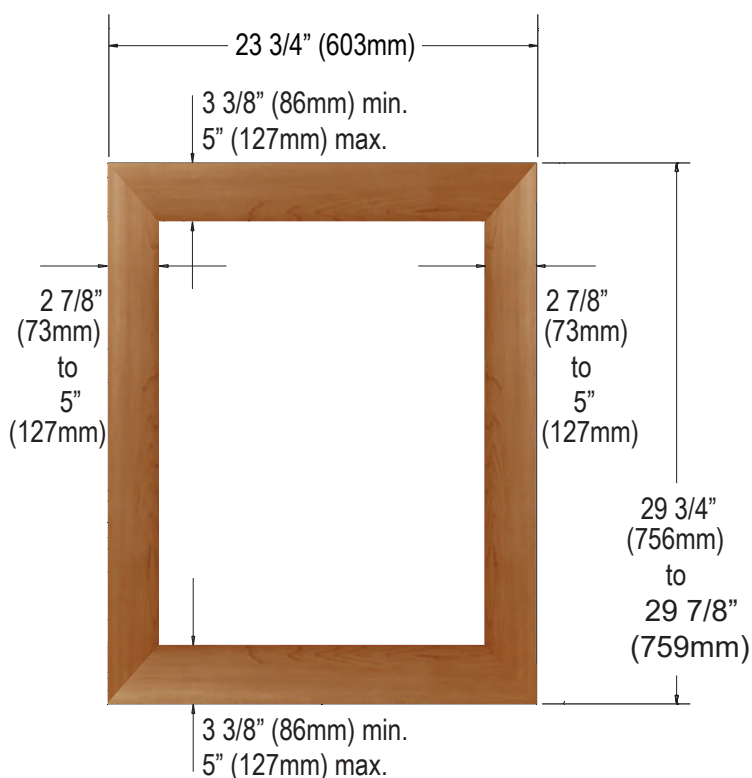
ALL XO UNDERCOUNTER
UNITS ARRIVE PRE-WIRED
WITH LOW PROFILE PLUGS
FOR EASY INSTALLATION



NEED MORE SPACE -
CUT INTO AN ADJOINING
CABINET TO REACH AN
OUTLET THERE

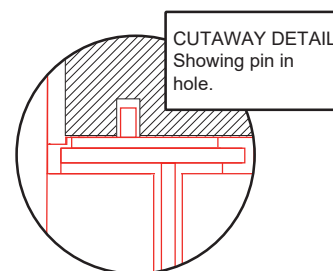


OVERLAY FRAME DIMENSIONS



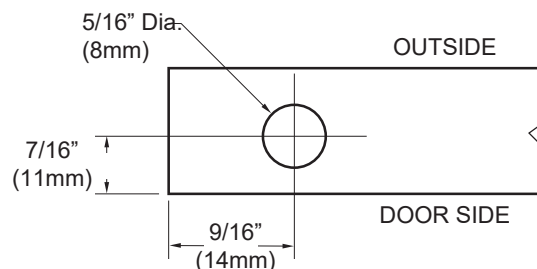
WHEN INSTALLING WITH
THE HINGE SIDE NEXT TO A WALL -
LEAVE ADEQUATE SPACE FOR
CABINET HANDLES

DOOR MUST BE ABLE TO OPEN
A MINIMUM OF 90°.



TO ACCOMMODATE THE HINGE PINS
ON THE HINGE SIDE OF THE PANEL
Drill a hole at least 5/16" in diameter and
1" deep into the top and bottom of the
frame in the location shown.

9/16" in from the edge and 7/16" out from
the unfinished side facing the door.



THE DOOR STOP IS SET AT 110°
BUT CAN BE RESET TO 90° OR 140°.

IF THE DOOR CANNOT OPEN FULLY
YOU CANNOT EXTEND THE RACKS.

XO the next level
in luxury appliances

xoappliance.com | 800.966.8300