



**SCONCE**

W: 5" H: 12" E: 6.625"  
Socket: 60 W Candelabra  
Damp Rated

- A. TV1111PN**  
Polished Nickel with  
Milk Glass Shade
- B. TV1111AI**  
Aged Iron with  
Milk Glass Shade

**2-LIGHT VANITY**

W: 13" H: 12" E: 6.625"  
Socket: 60 W Candelabra  
Damp Rated

- C. TV1122PN**  
Polished Nickel with  
Milk Glass Shades
- D. TV1122AI**  
Aged Iron with  
Milk Glass Shades

**3-LIGHT VANITY**

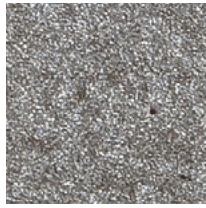
W: 19.5" H: 12" E: 6.625"  
Socket: 60 W Candelabra  
Damp Rated

- E. TV1133PN**  
Polished Nickel with  
Milk Glass Shades
- F. TV1133AI**  
Aged Iron with  
Milk Glass Shades

# FINISHES



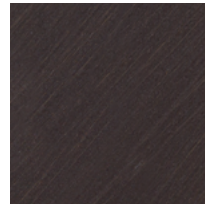
AGED IRON  
AI



AGED PEWTER  
AP



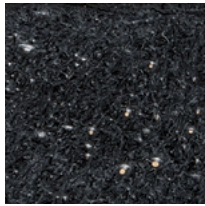
AGED TORTOISE SHELL  
ATS



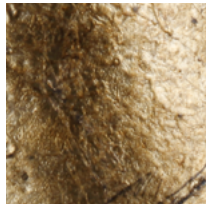
ANTIQUÉ BRONZE  
ANBZ



ANTIQUÉ COPPER  
AC



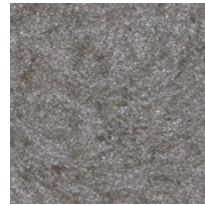
ANTIQUÉ FORGED IRON  
AF



ANTIQUÉ GILD  
ADB



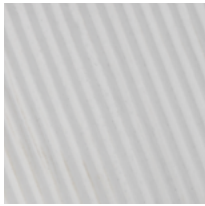
ANTIQUÉ NICKEL  
ANL



ANTIQUÉ PEWTER  
AP



ANTIQUÉ WHITE  
AWT



ARCTIC WHITE  
ARC



ASH BLACK  
ABLK



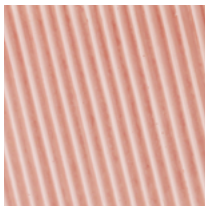
ASTRAL BRONZE  
ASTB



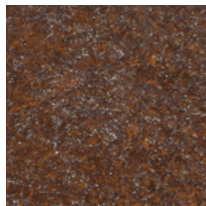
BLACK  
BK



BLACK LEATHER  
BKL



BLUSH  
BLH



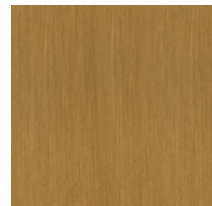
BRITISH BRONZE  
BRB



BRUSHED ALUMINUM  
BRAL



BRUSHED STEEL  
BS



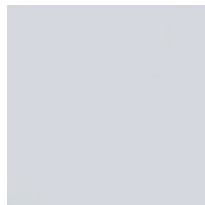
BURNISHED BRASS  
BBS



BURNISHED BRONZE  
BB



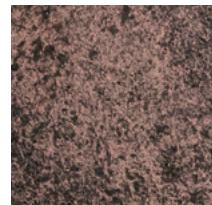
BURNISHED SILVER  
BUS



CHROME  
CH



COAL  
COL



COPPER OXIDE  
CO