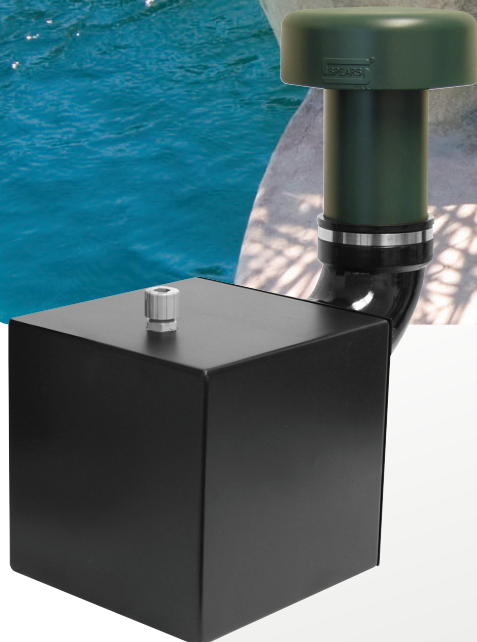


# ST8-4 LANDSCAPE SERIES

8", 4 OHM, SUBTERRANEAN SUBWOOFER



Size	10.95 h x 10.5 w x 10.5 d (in) 278 h x 267 w x 267 d (mm)
Freq Response	28-180Hz $\pm$ 3dB
Impedance	4 ohms
Sensitivity	87dB 2.83V /1m
Power req.	50-350W
Woofers	(1) 8" (203mm) Aluminum
Enclosure	Aluminum
Weight	27lbs/12kg

## (1) 8" (203mm) Aluminum Woofer

The ST8-4 is one of several options in our line of landscape subwoofers designed for local zone bass performance. This small area subwoofer can be configured with 1 satellite speaker as a mono channel, 2 satellite speakers as a 2.1 stereo, or with multiple satellite speakers in small patio areas.

Having mastered the mix of excellence in design, technology, and superior sound, outdoor entertainment has never been so complete. Designed with motion in mind, James Loudspeaker outdoor systems provide consistent sound levels in multiple stereo listening areas: by the pool, next to guests mingling at the barbecue, or at the surrounding tennis courts. James subterranean subwoofer's direct burial, 8" compression band pass design creates unrivaled low end frequency response, while the external hooded port, aircraft/marine grade aluminum enclosure, aluminum woofer, and stainless steel hardware provide superior protection in extreme weather.

All James subterranean subwoofers are designed to be buried underground leaving only the hooded port visible. With a standard verde finish as well as the availability of custom color options with an additional charge, these subwoofers are able to be completely camouflaged into the environment, leaving as little visual impact as possible.



2185 Park Place, Minden, NV 89423  
Ph: 775.461.7500  
[www.jamesloudspeaker.com](http://www.jamesloudspeaker.com)

## EARTH SHAKING PERFORMANCE

20220105