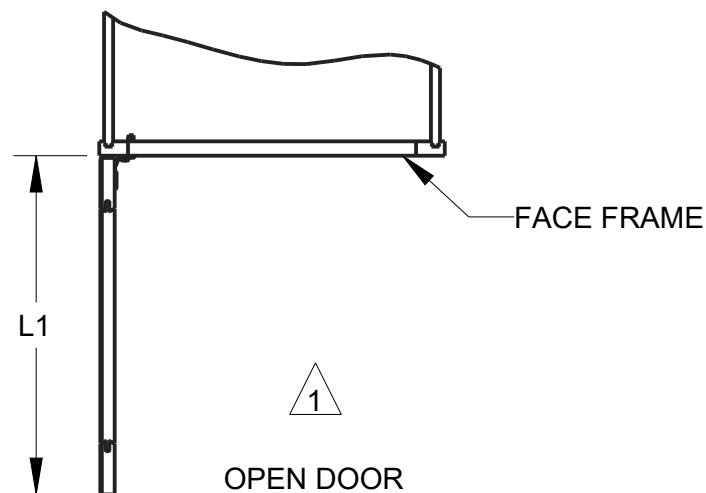
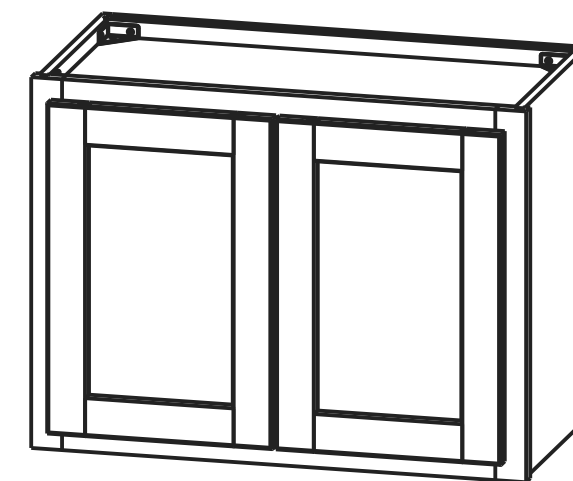
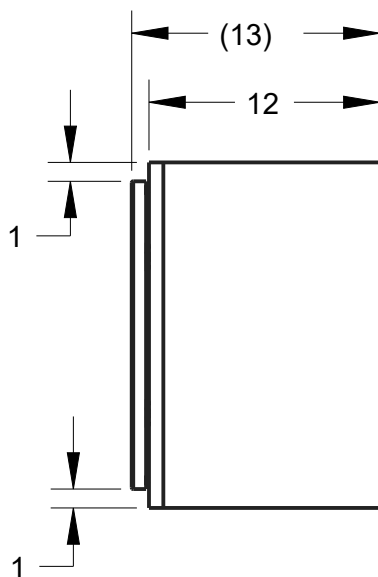
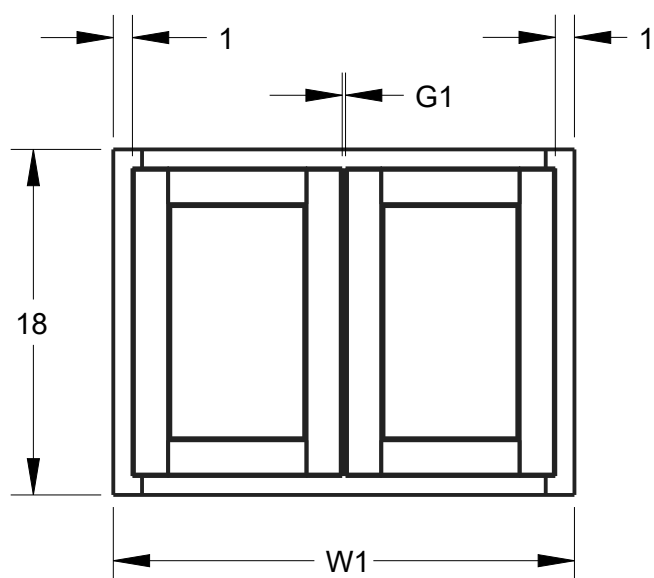


NOTES:

1 OPEN DOOR VIEW INCLUDES HINGE SPACE OFFSET.



PRODUCT	W1	L1	G1	DOOR SIZE
			ROUNDED TO THE NEAREST 1/32	
W3018	30"	14 1/16"	(3/16")	13 29/32" X 16 1/32"
W3318	33"	15 9/16"	(3/16")	15 13/32" X 16 1/32"
W3618	36"	17 1/16"	(3/16")	16 29/32" X 16 1/32"
W3918	39"	17 11/16"	(2")	17 17/32" X 16 1/32"

THIRD ANGLE PROJECTION



MATERIAL	FINISH
N/A	N/A

DESCRIPTION  
W3918, W3618, W3318, W3018 HALF OVERLAY

DRAWN BY ANDY BROWN	DATE 03MAR2021
DESIGNED BY NORTHPOINT	DATE

DRAWING NUMBER  
W3918-W3618W3318W3018\_HALF

APPROVED BY E. GOLESTANYAN	DATE 26MAR2021
-------------------------------	-------------------

SIZE A3  
SCALE 0.111  
SHEET 1 / 1

PRODUCT SHOWN W3018

DOCUMENT STATUS Released

HARDWARE RESOURCES RESERVES THE RIGHT TO CHANGE SPECIFICATIONS WITHOUT NOTICE. IN CASE OF A DISCREPANCY, ACTUAL PART GEOMETRY SUPERSEDES THIS DOCUMENT.

THE INFORMATION CONTAINED WITHIN THIS DRAWING IS THE SOLE PROPERTY OF HARDWARE RESOURCES INC. ANY REPRODUCTION IN PART OR WHOLE WITHOUT WRITTEN PERMISSION OF HARDWARE RESOURCES INC. IS PROHIBITED.