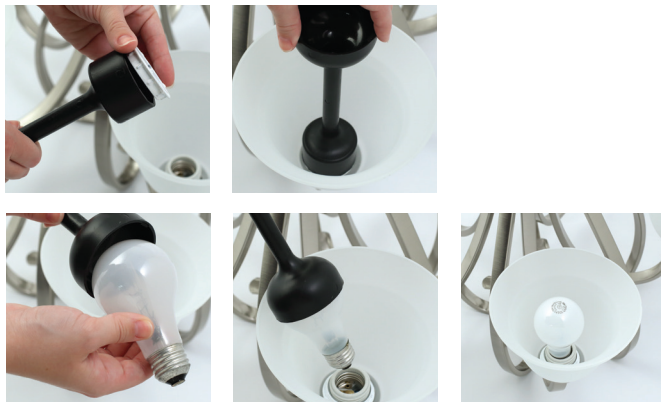


Pendant Accessories

Socket Collar Tool

The socket collar tool provides extra leverage and eliminates a loose fit when installing glass shades. Working like a wrench, the socket collar tool extends into the shade and tightens the socket ring, securing the shade in place, and can reverse to loosen the ring to remove the shade. This accessory can be used on a variety of fixtures, including chandeliers, mini-pendants, sconces and wall brackets.

P8685-01 Socket Collar Tool
2-5/8" dia., 7-7/8" tall.



Stem Kits

Contains (2) 12" and (2) 15" stems and couplings.

- P8601-09** Brushed Nickel
- P8601-12** Satin Brass
- P8601-15** Polished Chrome
- P8601-20** Antique Bronze
- P8601-31** Black
- P8601-71** Gilded Iron
- P8601-74** Venetian Bronze
- P8601-77** Forged Bronze
- P8601-78** Vintage Gold
- P8601-81** Antique Nickel

- P8601-104** Polished Nickel
- P8601-108** Oil Rubbed Bronze
- P8601-109** Brushed Bronze
- P8601-134** Silver Ridge
- P8601-137** Natural Brass
- P8601-141** Galvanized
- P8601-143** Graphite
- P8601-151** Cottage White
- P8601-160** Brushed Brass
- P8601-161** Aged Brass

Contains (2) 6" and (1) 12" stems and couplings.

- P8602-09** Brushed Nickel
- P8602-20** Antique Bronze
- P8602-31M** Matte Black
- P8602-163** Vintage Brass
- P8602-168** Antique Gold

- P8602-175** Distressed Brass
- P8602-176** Gilded Silver
- P8602-191** Brushed Gold
- P8602-196** Aged Bronze



Socket/Cord Kit for Higher Ceilings

Provides additional length to cord-hung fixtures (only) for installations on high ceilings and in stairwells. For use with P4401, P4402, P4403, P4406, and P5094.

P8625-30 White
15' cord with socket for replacement on cord-hung pendants.



P8625-30



Pendant sold separately

Loop and Chain Kit

Converts any stem-hung pendant to sloped ceiling applications. Kit includes (6) chain links, (2) 1/8" I.P. loops, (2) 1/8" I.P. x 9/16" nipples, (1) hex nut, (1) int. lock washer, and (1) 12" piece of fiberglass sleeving.

P8678-09 Brushed Nickel
P8678-20 Antique Bronze
7/8" dia., 9-1/2" ht.



P8678-20