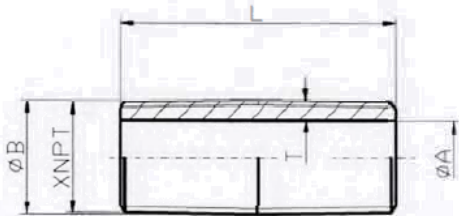


Schedule 40 Welded Steel Pipe Nipples Black and Galvanized

Specification Sheet

FEATURES:

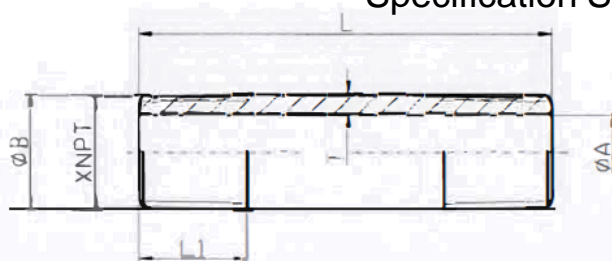
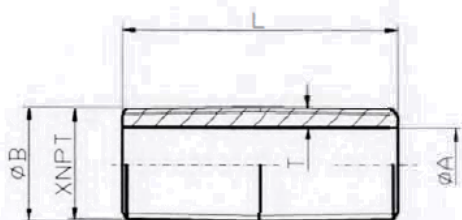
Material: ASTM A53/A53M, ERW type, Grade B
 Dimensions: ASTM A733
 Threads: ASME B1.20.1
 Approvals: NSF61, NSF372 (Galvanized Only)
 Availability: Stocked from 1/8" through 8" diameters



| Part # | Size | A | B | L | L1 | T (min) |
|----------|-----------|-------|-------|-------|-------|---------|
| ZNB00CL | 1/8XCLOSE | 0.269 | 0.405 | 3/4 | ---- | 0.060 |
| ZNB00112 | 1/8X1-1/2 | 0.269 | 0.405 | 1-1/2 | 0.392 | 0.060 |
| ZNB002 | 1/8X2 | 0.269 | 0.405 | 2 | 0.392 | 0.060 |
| ZNB00212 | 1/8X2-1/2 | 0.269 | 0.405 | 2-1/2 | 0.392 | 0.060 |
| ZNB003 | 1/8X3 | 0.269 | 0.405 | 3 | 0.392 | 0.060 |
| ZNB00312 | 1/8X3-1/2 | 0.269 | 0.405 | 3-1/2 | 0.392 | 0.060 |
| ZNB004 | 1/8X4 | 0.269 | 0.405 | 4 | 0.392 | 0.060 |
| ZNB00412 | 1/8X4-1/2 | 0.269 | 0.405 | 4-1/2 | 0.392 | 0.060 |
| ZNB005 | 1/8X5 | 0.269 | 0.405 | 5 | 0.392 | 0.060 |
| ZNB00512 | 1/8X5-1/2 | 0.269 | 0.405 | 5-1/2 | 0.392 | 0.060 |
| ZNB006 | 1/8X6 | 0.269 | 0.405 | 6 | 0.392 | 0.060 |
| ZNB007 | 1/8X7 | 0.269 | 0.405 | 7 | 0.392 | 0.060 |
| ZNB008 | 1/8X8 | 0.269 | 0.405 | 8 | 0.392 | 0.060 |
| ZNB009 | 1/8X9 | 0.269 | 0.405 | 9 | 0.392 | 0.060 |
| ZNB0010 | 1/8X10 | 0.269 | 0.405 | 10 | 0.392 | 0.060 |
| ZNB0012 | 1/8X12 | 0.269 | 0.405 | 12 | 0.392 | 0.060 |
| ZNB01CL | 1/4XCLOSE | 0.364 | 0.540 | 7/8 | ---- | 0.077 |
| ZNB01112 | 1/4X1-1/2 | 0.364 | 0.540 | 1-1/2 | 0.595 | 0.077 |
| ZNB012 | 1/4X2 | 0.364 | 0.540 | 2 | 0.595 | 0.077 |
| ZNB01212 | 1/4X2-1/2 | 0.364 | 0.540 | 2-1/2 | 0.595 | 0.077 |
| ZNB013 | 1/4X3 | 0.364 | 0.540 | 3 | 0.595 | 0.077 |
| ZNB01312 | 1/4X3-1/2 | 0.364 | 0.540 | 3-1/2 | 0.595 | 0.077 |
| ZNB014 | 1/4X4 | 0.364 | 0.540 | 4 | 0.595 | 0.077 |
| ZNB01412 | 1/4X4-1/2 | 0.364 | 0.540 | 4-1/2 | 0.595 | 0.077 |
| ZNB015 | 1/4X5 | 0.364 | 0.540 | 5 | 0.595 | 0.077 |
| ZNB01512 | 1/4X5-1/2 | 0.364 | 0.540 | 5-1/2 | 0.595 | 0.077 |
| ZNB016 | 1/4X6 | 0.364 | 0.540 | 6 | 0.595 | 0.077 |
| ZNB01612 | 1/4X6-1/2 | 0.364 | 0.540 | 6-1/2 | 0.595 | 0.077 |
| ZNB017 | 1/4X7 | 0.364 | 0.540 | 7 | 0.595 | 0.077 |
| ZNB018 | 1/4X8 | 0.364 | 0.540 | 8 | 0.595 | 0.077 |

| Part # | Size | A | B | L | L1 | T (min) |
|----------|-----------|-------|-------|-------|-------|---------|
| ZNB019 | 1/4X9 | 0.364 | 0.540 | 9 | 0.595 | 0.077 |
| ZNB0110 | 1/4X10 | 0.364 | 0.540 | 10 | 0.595 | 0.077 |
| ZNB0111 | 1/4X11 | 0.364 | 0.540 | 11 | 0.595 | 0.077 |
| ZNB0112 | 1/4X12 | 0.364 | 0.540 | 12 | 0.595 | 0.077 |
| ZNB02CL | 3/8XCLOSE | 0.493 | 0.675 | 1 | ---- | 0.080 |
| ZNB02112 | 3/8X1-1/2 | 0.493 | 0.675 | 1-1/2 | 0.601 | 0.080 |
| ZNB022 | 3/8X2 | 0.493 | 0.675 | 2 | 0.601 | 0.080 |
| ZNB02212 | 3/8X2-1/2 | 0.493 | 0.675 | 2-1/2 | 0.601 | 0.080 |
| ZNB023 | 3/8X3 | 0.493 | 0.675 | 3 | 0.601 | 0.080 |
| ZNB02312 | 3/8X3-1/2 | 0.493 | 0.675 | 3-1/2 | 0.601 | 0.080 |
| ZNB024 | 3/8X4 | 0.493 | 0.675 | 4 | 0.601 | 0.080 |
| ZNB02412 | 3/8X4-1/2 | 0.493 | 0.675 | 4-1/2 | 0.601 | 0.080 |
| ZNB025 | 3/8X5 | 0.493 | 0.675 | 5 | 0.601 | 0.080 |
| ZNB02512 | 3/8X5-1/2 | 0.493 | 0.675 | 5-1/2 | 0.601 | 0.080 |
| ZNB026 | 3/8X6 | 0.493 | 0.675 | 6 | 0.601 | 0.080 |
| ZNB02612 | 3/8X6-1/2 | 0.493 | 0.675 | 6-1/2 | 0.601 | 0.080 |
| ZNB027 | 3/8X7 | 0.493 | 0.675 | 7 | 0.601 | 0.080 |
| ZNB028 | 3/8X8 | 0.493 | 0.675 | 8 | 0.601 | 0.080 |
| ZNB029 | 3/8X9 | 0.493 | 0.675 | 9 | 0.601 | 0.080 |
| ZNB0210 | 3/8X10 | 0.493 | 0.675 | 10 | 0.601 | 0.080 |
| ZNB0211 | 3/8X11 | 0.493 | 0.675 | 11 | 0.601 | 0.080 |
| ZNB0212 | 3/8X12 | 0.493 | 0.675 | 12 | 0.601 | 0.080 |
| ZNB03CL | 1/2XCLOSE | 0.622 | 0.840 | 1-1/8 | ---- | 0.095 |
| ZNB03112 | 1/2X1-1/2 | 0.622 | 0.840 | 1-1/2 | 0.669 | 0.095 |
| ZNB03114 | 1/2X1-1/4 | 0.622 | 0.840 | 1-1/4 | 0.782 | 0.095 |
| ZNB03134 | 1/2X1-3/4 | 0.622 | 0.840 | 1-3/4 | 0.782 | 0.095 |
| ZNB032 | 1/2X2 | 0.622 | 0.840 | 2 | 0.782 | 0.095 |
| ZNB03212 | 1/2X2-1/2 | 0.622 | 0.840 | 2-1/2 | 0.782 | 0.095 |
| ZNB033 | 1/2X3 | 0.622 | 0.840 | 3 | 0.782 | 0.095 |
| ZNB03312 | 1/2X3-1/2 | 0.622 | 0.840 | 3-1/2 | 0.782 | 0.095 |

Schedule 40 Welded Steel Pipe Nipples Black and Galvanized Specification Sheet



| Part # | Size | A | B | L | L1 | T (min) |
|----------|---------|-------|-------|-------|-------|---------|
| ZNB118 | 4X8 | 4.026 | 4.500 | 8 | 1.734 | 0.207 |
| ZNB119 | 4X9 | 4.026 | 4.500 | 9 | 1.734 | 0.207 |
| ZNB1110 | 4X10 | 4.026 | 4.500 | 10 | 1.734 | 0.207 |
| ZNB1111 | 4X11 | 4.026 | 4.500 | 11 | 1.734 | 0.207 |
| ZNB1112 | 4X12 | 4.026 | 4.500 | 12 | 1.734 | 0.207 |
| ZNB12CL | 5XCLOSE | 5.047 | 5.563 | 3 | ---- | 0.226 |
| ZNB124 | 5X4 | 5.047 | 5.563 | 4 | 1.840 | 0.226 |
| ZNB125 | 5X5 | 5.047 | 5.563 | 5 | 1.840 | 0.226 |
| ZNB12512 | 5X5-1/2 | 5.047 | 5.563 | 5-1/2 | 1.840 | 0.226 |
| ZNB126 | 5X6 | 5.047 | 5.563 | 6 | 1.840 | 0.226 |
| ZNB128 | 5X8 | 5.047 | 5.563 | 8 | 1.840 | 0.226 |
| ZNB1210 | 5X10 | 5.047 | 5.563 | 10 | 1.840 | 0.226 |
| ZNB1212 | 5X12 | 5.047 | 5.563 | 12 | 1.840 | 0.226 |
| ZNB13CL | 6XCLOSE | 6.065 | 6.625 | 3-1/8 | ---- | 0.245 |
| ZNB134 | 6X4 | 6.065 | 6.625 | 4 | 1.772 | 0.245 |
| ZNB135 | 6X5 | 6.065 | 6.625 | 5 | 1.946 | 0.245 |
| ZNB136 | 6X6 | 6.065 | 6.625 | 6 | 1.946 | 0.245 |
| ZNB137 | 6X7 | 6.065 | 6.625 | 7 | 1.946 | 0.245 |
| ZNB138 | 6X8 | 6.065 | 6.625 | 8 | 1.946 | 0.245 |
| ZNB139 | 6X9 | 6.065 | 6.625 | 9 | 1.946 | 0.245 |
| ZNB1310 | 6X10 | 6.065 | 6.625 | 10 | 1.946 | 0.245 |
| ZNB1312 | 6X12 | 6.065 | 6.625 | 12 | 1.946 | 0.245 |
| ZNB14CL | 8XCLOSE | 7.981 | 8.625 | 2-1/2 | ---- | 0.282 |
| ZNB146 | 8X6 | 7.981 | 8.625 | 6 | 2.146 | 0.282 |
| ZNB148 | 8X8 | 7.981 | 8.625 | 8 | 2.146 | 0.282 |
| ZNB1410 | 8X10 | 7.981 | 8.625 | 10 | 2.146 | 0.282 |
| ZNB1412 | 8X12 | 7.981 | 8.625 | 12 | 2.146 | 0.282 |

| Part # | Size | A | B | L | L1 | T (min) |
|----------|-----------|-------|-------|-------|-------|---------|
| ZNG00CL | 1/8XCLOSE | 0.269 | 0.405 | 3/4 | ---- | 0.060 |
| ZNG00112 | 1/8X1-1/2 | 0.269 | 0.405 | 1-1/2 | 0.392 | 0.060 |
| ZNG002 | 1/8X2 | 0.269 | 0.405 | 2 | 0.392 | 0.060 |
| ZNG00212 | 1/8X2-1/2 | 0.269 | 0.405 | 2-1/2 | 0.392 | 0.060 |
| ZNG003 | 1/8X3 | 0.269 | 0.405 | 3 | 0.392 | 0.060 |
| ZNG00312 | 1/8X3-1/2 | 0.269 | 0.405 | 3-1/2 | 0.392 | 0.060 |
| ZNG004 | 1/8X4 | 0.269 | 0.405 | 4 | 0.392 | 0.060 |
| ZNG00412 | 1/8X4-1/2 | 0.269 | 0.405 | 4-1/2 | 0.392 | 0.060 |
| ZNG005 | 1/8X5 | 0.269 | 0.405 | 5 | 0.392 | 0.060 |
| ZNG00512 | 1/8X5-1/2 | 0.269 | 0.405 | 5-1/2 | 0.392 | 0.060 |
| ZNG006 | 1/8X6 | 0.269 | 0.405 | 6 | 0.392 | 0.060 |
| ZNG007 | 1/8X7 | 0.269 | 0.405 | 7 | 0.392 | 0.060 |
| ZNG008 | 1/8X8 | 0.269 | 0.405 | 8 | 0.392 | 0.060 |
| ZNG009 | 1/8X9 | 0.269 | 0.405 | 9 | 0.392 | 0.060 |
| ZNG0010 | 1/8X10 | 0.269 | 0.405 | 10 | 0.392 | 0.060 |
| ZNG0011 | 1/8X11 | 0.269 | 0.405 | 11 | 0.392 | 0.060 |
| ZNG0012 | 1/8X12 | 0.269 | 0.405 | 12 | 0.392 | 0.060 |
| ZNG01CL | 1/4XCLOSE | 0.364 | 0.540 | 7/8 | ---- | 0.077 |
| ZNG011 | 1/4X1 | 0.364 | 0.540 | 1 | 0.595 | 0.077 |
| ZNG01112 | 1/4X1-1/2 | 0.364 | 0.540 | 1-1/2 | 0.595 | 0.077 |
| ZNG012 | 1/4X2 | 0.364 | 0.540 | 2 | 0.595 | 0.077 |
| ZNG01212 | 1/4X2-1/2 | 0.364 | 0.540 | 2-1/2 | 0.595 | 0.077 |
| ZNG013 | 1/4X3 | 0.364 | 0.540 | 3 | 0.595 | 0.077 |
| ZNG01312 | 1/4X3-1/2 | 0.364 | 0.540 | 3-1/2 | 0.595 | 0.077 |
| ZNG014 | 1/4X4 | 0.364 | 0.540 | 4 | 0.595 | 0.077 |
| ZNG01412 | 1/4X4-1/2 | 0.364 | 0.540 | 4-1/2 | 0.595 | 0.077 |
| ZNG015 | 1/4X5 | 0.364 | 0.540 | 5 | 0.595 | 0.077 |
| ZNG01512 | 1/4X5-1/2 | 0.364 | 0.540 | 5-1/2 | 0.595 | 0.077 |
| ZNG016 | 1/4X6 | 0.364 | 0.540 | 6 | 0.595 | 0.077 |
| ZNG017 | 1/4X7 | 0.364 | 0.540 | 7 | 0.595 | 0.077 |
| ZNG018 | 1/4X8 | 0.364 | 0.540 | 8 | 0.595 | 0.077 |
| ZNG019 | 1/4X9 | 0.364 | 0.540 | 9 | 0.595 | 0.077 |
| ZNG0110 | 1/4X10 | 0.364 | 0.540 | 10 | 0.595 | 0.077 |
| ZNG0111 | 1/4X11 | 0.364 | 0.540 | 11 | 0.595 | 0.077 |
| ZNG0112 | 1/4X12 | 0.364 | 0.540 | 12 | 0.595 | 0.077 |
| ZNG02CL | 3/8XCLOSE | 0.493 | 0.675 | 1 | ---- | 0.080 |
| ZNG02112 | 3/8X1-1/2 | 0.493 | 0.675 | 1-1/2 | 0.601 | 0.080 |