

Installation Instructions

Anthem+™ Digital Control

Record your model number:

Noter le numéro de modèle:

Anote su número de modelo:

记录您的型号: _____

Français, page 14

Español, página 26

简体中文, 页码 38

KOHLER®

1579645-K2-A

Customer Support

Thank you for choosing KOHLER.

Need help? Contact our Customer Care Center.

North America

- USA/Canada: 1-800-4KOHLER (1-800-456-4537) Mexico: 001-800-456-4537
- **Service parts:** [kohler.com/serviceparts](https://www.kohler.com/serviceparts)
- **Care and cleaning:** [kohler.com/clean](https://www.kohler.com/clean)
- **Patents:** [kohlercompany.com/patents](https://www.kohlercompany.com/patents)

India

- E-mail: indiacustomercare@kohler.com
- 1800-103-2244

Mainland China

- +(86) 800-820-2628
- +(86) 400-820-2628

Warranty

North America

This product is covered under the **KOHLER® Electronic Faucets, Valves, and Controls Five-Year Limited Warranty**, found at [kohler.com/warranty](https://www.kohler.com/warranty). For a hardcopy of warranty terms, contact the Customer Care Center.

India

This product is covered under the **KOHLER® India Faucet, Sanitaryware and Bathing Products Limited Warranty**, found at [kohler.co.in/warranty](https://www.kohler.co.in/warranty).

China











This product is covered under the **Three-Year Limited Warranty for KOHLER® Digital Shower Valves and Controls**, found in the packed Compliance Certification.

IMPORTANT INSTRUCTIONS

READ AND FOLLOW ALL INSTRUCTIONS

SAVE THESE INSTRUCTIONS

When using electrical products, especially when children are present, basic safety precautions should always be followed, including the following:

-  **WARNING: Risk of electric shock.** Grounding is required. The unit should be installed and grounded by a qualified service representative.
-  **WARNING: Risk of electric shock.** A qualified electrician should route all electrical wiring.
-  **WARNING: Risk of electric shock.** Disconnect the power before servicing.
-  **WARNING: Risk of injury.** This device is not intended for use by persons (including children) with different or reduced physical, sensory, or mental abilities, or who lack experience or knowledge, unless they are under the supervision of or receive training for the use of the device by a person responsible for their safety. Children should be supervised to ensure that they do not use this device as a toy.
-  **WARNING: Risk of injury.** Never remotely operate or alter this product if the system is in use by another person.
-  **WARNING: Risk of injury or property damage.** Read all instructions thoroughly before beginning installation.
-  **WARNING: Unauthorized modification may cause poor performance and will void the warranty.** Do not make modifications to the product other than instructed by this guide, as this could adversely affect product performance. Kohler Co. shall not be liable under its warranty or otherwise for personal injury or damage caused by any such unspecified modification.
-  **CAUTION: Risk of scalding.** Always check that the water temperature is safe before bathing or showering.
-  **CAUTION: Risk of product damage.** Do not operate the product if the product is thought to have been exposed to freezing conditions.
-  **CAUTION: Risk of product damage.** Do not use attachments that are not recommended by the manufacturer.



CAUTION: Risk of injury or property damage. Do not operate the product if water is leaking from inside the valve module.

NOTICE: Some electrical codes require a circuit protected by a Ground-Fault Circuit-Interrupter (GFCI)*.

NOTICE: Provide unrestricted service access to the controller.

Follow all local plumbing, building, and electrical codes.

*Outside North America, this may be known as a Residual Current Device (RCD).

This product operates only with the following valve systems: K-28209, K-28210, K-28211, or K-28212. The Anthem+ User Interface (K-28214-ASC) requires the Anthem+ Digital System Controller (K-27756) to operate.

Do not use excessive force when making connections.

Before Operating the System For the First Time:

Download and install the latest software for connected components. This may take an hour or more to complete based on system configuration and internet connection speed. Do not disconnect the power from any components during software download and installation.

Compliance

This device complies with Part 15 of the FCC Rules. Operation is subject to the following two conditions: (1) this device may not cause harmful interference, and (2) this device must accept any interference received, including interference that may cause undesired operation.

Changes or modifications not expressly approved by the party responsible for compliance could void the user's authority to operate the equipment.

This equipment has been tested and found to comply with the limits for a Class B digital device, pursuant to Part 15 of the FCC Rules. These limits are designed to provide reasonable protection against harmful interference in a residential installation. This equipment generates, uses, and can radiate radio frequency energy and, if not installed and used in accordance with the instructions, may cause harmful interference to radio communications. However, there is no guarantee that interference will not occur in a particular installation. If this equipment does cause

harmful interference to radio or television reception, which can be determined by turning the equipment off and on, the user is encouraged to try to correct the interference by one of the following measures:

- Reorient or relocate the receiving antenna.
- Increase the separation between the equipment and receiver.
- Connect the equipment into an outlet on a circuit different from that to which the receiver is connected.
- Consult the dealer or an experienced radio/TV technician for help.

This Class B digital apparatus complies with Canadian ICES-003.

Recycling and Disposal



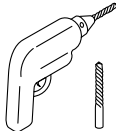
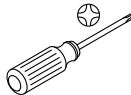
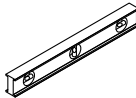
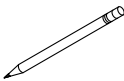
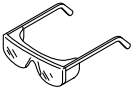
This product should not be disposed of with your general household waste. When this product has reached the end of its serviceable life, take it to a recognized WEEE (Waste Electrical and Electronic Equipment) collection facility such as your local civic amenity site for recycling. Your local authority or retailer can direct you to the nearest recycling facility.

Kohler Co. hereby declares that this product is in compliance with the China RoHS II Directive (GB/T 26572-2011). The full text of the Hazardous Substance Disclosure Table is available in the Digital Control Homeowners Guide found at <http://www.kohler.com.cn>.

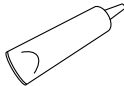
Specifications

Electrical Supply	12 VDC SELV 2 W Max - derived from the Anthem+ System Controller
Ingress Protection	IP X5 - suitable for a wet environment
Maximum Ambient Temperature	104°F (40°C)

Tools and Materials

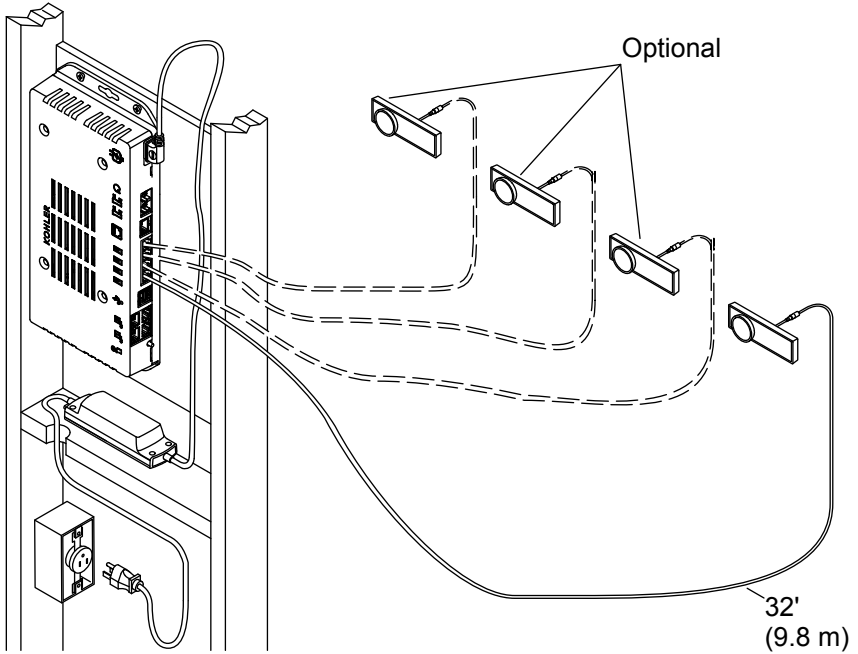


15/64" (6 mm)



Ø 7/8" (22 mm) Silicone Sealant

1. Plan the Components

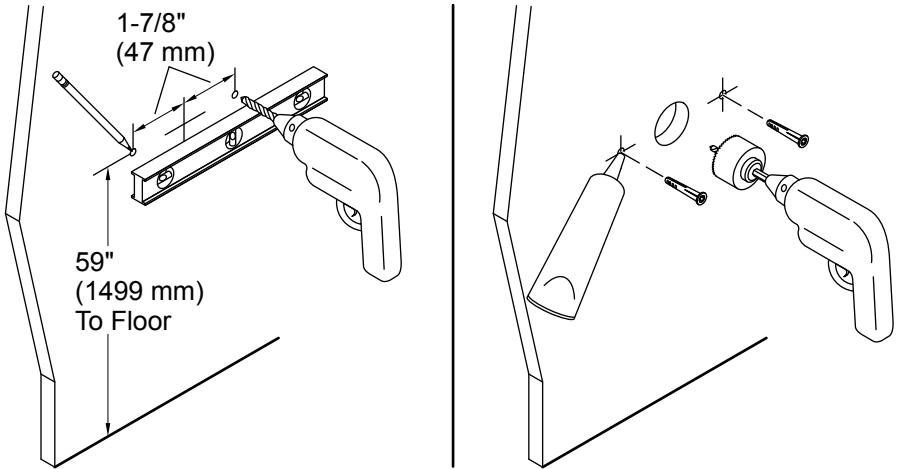


IMPORTANT! For optimal tactile function, do not install this product in direct exposure to spray from a showerhead, handshower, or body spray.

CAUTION: Uneven surfaces may result in the digital control not engaging with the mounting bracket. Verify that the digital control installation location is completely flat.

- If not already installed, install the digital valve(s) and the Anthem+ System Controller, following the instructions packed with those products.
- Determine the locations of all required components before beginning installation.
- Route the digital control cable(s) from the system controller to the installation location(s).
- Complete the finished wall.

2. Prepare the Wall



CAUTION: Risk of property damage. Do not drill into cables or pipes behind the wall.

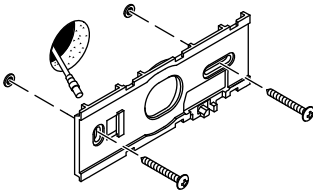
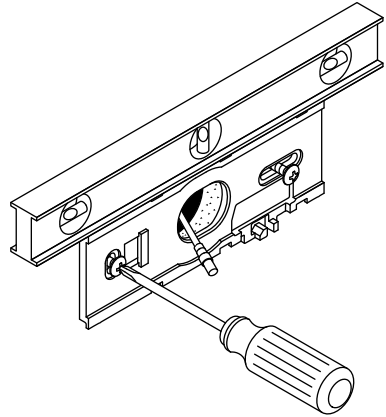
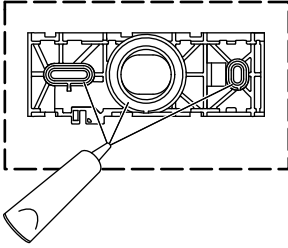
CAUTION: Uneven surfaces may result in the digital control not engaging with the mounting bracket. Verify that the digital control installation location is completely flat.

NOTE: Install the product on a flat and even wall surface, avoiding grout lines, if possible.

NOTE: The recommended height above the floor is 59" (1499 mm).

- Determine the installation location. Verify that the product will mount on a flat and even wall surface, avoiding grout lines if possible.
- Mark the center of the digital control installation location.
- Use a level and a pencil to mark the mounting-hole locations, 1-7/8" (47 mm) to each side of the center hole.
- Drill a 15/64" (6 mm) hole at the mounting-hole locations.
- Drill a 7/8" (22 mm) hole at the center mark.
- Apply silicone sealant around the mounting-holes.
- Install anchors into the mounting-holes.

3. Install the Mounting Plate



CAUTION: Risk of product damage. Do not use an electric screwdriver. Overtightening the screws can damage the product.

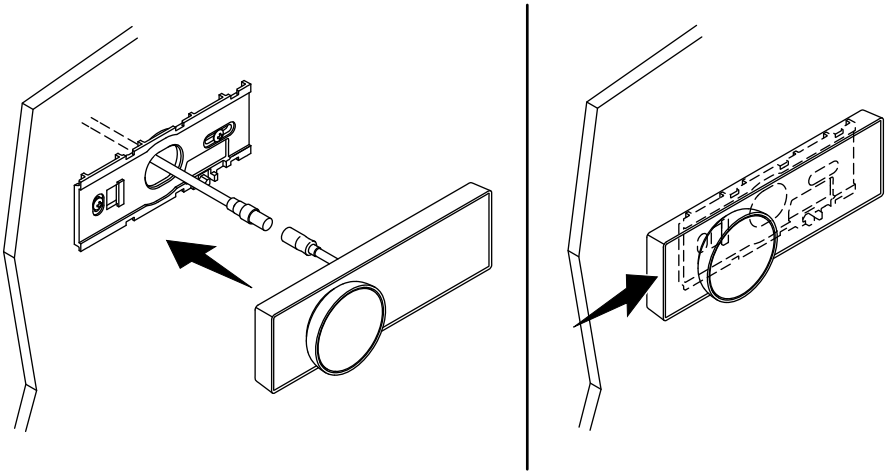


CAUTION: Risk of product damage. Use supplied screws only. Use of incorrect screws can damage the product or prevent assembly.

NOTE: Install the product on a flat and even wall surface, avoiding grout lines, if possible.

- If grout lines cannot be avoided, seal the grout lines and any uneven surfaces.
- Apply silicone sealant to the grooves around the holes, on the back of the mounting plate.
- Loosely install the mounting plate with the two screws provided.
- Verify level and handtighten the screws. Do not overtighten.
- Feed the cable from the wall through the mounting plate a minimum of 2" (50 mm).

4. Install the Digital Control

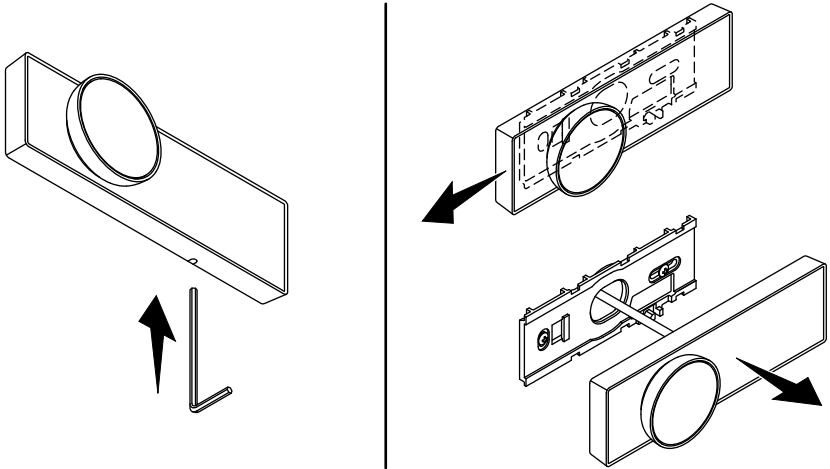


- Connect the digital control cable to the digital control.
- Connect the digital control cable to the Anthem+ System Controller according to the installation instructions packed with the controller.
- Position and firmly press the digital control onto the mounting bracket.
- Slide the digital control to the right to click in place.
- Follow the instructions packed with the Anthem+ System Controller to complete the controller and cable installation.

Digital Control Setup

- Follow the packed Quick Reference Guide for setup instructions.
- For additional digital control features, download the KOHLER Konnect[®] App to your mobile device and follow the on-screen instructions.

Removing the Digital Control



NOTE: Disconnect the digital control from the mounting bracket only if needed. Frequent removal and reinstallation could compromise the integrity of the mounting bracket.

- Insert a small tool, such as a hex wrench, into the hole on the bottom of the digital control.
- Press the tool upward and slide the digital control to the left to disengage from the mounting bracket.
- Remove the tool. Slide the digital control to the left to remove from the bracket.

Troubleshooting

NOTE: Refer to the KOHLER Konnect[®] App for settings and programming.

This troubleshooting guide is for general aid only. For service and installation issues or concerns, refer to the “Customer Support” section for contact information for your region.

Symptoms	Probable Cause	Recommended Action
1. The digital control is not lit.	A. The Anthem+ System Controller is not plugged into the electrical outlet. B. The digital control cable connections may be loose or disconnected. C. The circuit breaker has tripped. D. The Anthem+ System Controller may require resetting. E. If none of the recommended actions for the above issues correct the symptom, the digital control or Anthem+ System Controller requires servicing.	A. Plug the Anthem+ System Controller into an electrical outlet. B. Check all digital control cable connections. C. Reset the circuit breaker. D. Disconnect and reconnect the Anthem+ System Controller power supply from the electrical outlet. E. Contact the KOHLER Customer Care Center.

Symptoms	Probable Cause	Recommended Action
<p>2. The digital control is lit, but the system will not turn ON.</p>	<p>A. The digital control cable connections may be loose.</p> <p>B. The digital control cable is damaged.</p> <p>C. The Anthem+ System Controller may require resetting.</p> <p>D. If none of the recommended actions for the above issues correct the symptom, the digital control or Anthem+ System Controller requires servicing.</p>	<p>A. Check all digital control cable connections.</p> <p>B. Replace the digital control cable.</p> <p>C. Disconnect and reconnect the Anthem+ System Controller power supply from the electrical outlet.</p> <p>D. Contact the KOHLER Customer Care Center.</p>