

ULTRX™

BIONIC FUSE **BLUETOOTH®**
AROUND THE NECK
ELECTRONIC EARBUDS

MODEL NUMBER: 4159

The **ULTRX™ Bionic Fuse Bluetooth® Around the Neck Electronic Earbuds** Earbuds are designed to offer the user the convenience of multiple mode options depending on the sound environment you desire:

MODE 1: SOUND AMPLIFICATION/PROTECTION MODE

Provides active external sound amplification through 2 hi-gain directional microphones. These microphones are designed to boost external sound sensitivity up to 5x normal hearing while providing crisp sound wave isolation to deliver hearing clarity. In this mode, any loud noises above 82dB will trigger both an immediate split-second dynamic sound wave compression AND immediate microphone shut down function protecting the user's ears from the harmful incoming high decibel sounds.

MODE 2: BLUETOOTH® MODE

Allows the user to pair via Bluetooth® 5.3 technology to a smart device while maintaining sound amplification features in **Mode 1**. This setting provides the ability to listen to various audio content sources via high-definition speakers. If you wish to maximize your Bluetooth® experience, and limit the external sounds being received in the microphones, simply lower your external boost level by using the Volume Buttons on the SIDE of the Power Module.

HOW TO OPERATE

Place left earbud in left ear [this will allow you to get acquainted with the Power Module more easily. Once you are familiar with controls you can place right earbud in right ear]. Turn on earbuds by pressing the Power / Mode Button on the TOP of the Power Module for 2-3 seconds [Figure 1]. As the unit powers up, an audible "Power On" message will be heard.

At this point, you will notice the presence of external sounds via the external microphones. This is **Mode 1**. In order to reduce or increase the level of those sounds, use the Volume Buttons located on the SIDE of the Power Module.

If you wish to operate in **Bluetooth® Mode [Mode 2]**, pair earbuds to your smart device using the **Bluetooth® Pairing Instructions** below. Once your device is paired, you will be able to listen to digital content, phone conversations, etc. Control Bluetooth® volume using the Volume Buttons on the TOP of the Power Module, or by using the volume controls on your smart device.

To pause Bluetooth® audio content, press the Power / Mode button once.

To switch between sound modes, hold down the Power / Mode Button for approximately 1 second. When switching between modes, you will notice a pause in audio while the device is transitioning.

To turn the unit completely off, hold the Power / Mode Button down for at least 3 seconds, until you hear an audible command of "Power Off". You will also notice 3 red flashes of the power light as the unit is powering down.

OPERATIONAL COMMAND GUIDE

Scan QR code at right for full list of device actions and corresponding functions:



BLUETOOTH® PAIRING INSTRUCTIONS

Ensure earbuds are in close proximity to your smart device. Turn on your smart device and navigate to the Bluetooth® devices screen [Figure 2].

Power up the earbuds. A flashing blue light and audible chime will indicate that the unit has automatically entered pairing mode. The earbuds will now appear under the name "ULTRX-Bio" in the unconnected Bluetooth® devices list on your smart device [Figure 2]. Choose the device labeled "ULTRX-Bio". An audible "Connected" message will confirm your earbuds are now paired, and "ULTRX-Bio" will move up to your saved devices. You will also see a solid blue light on the Power Module indicating continuous pairing to your smart device. The next time you power up, the earbuds will automatically pair to your device.

INCOMING CALLS

In **Bluetooth® Mode**, incoming phone calls will mute audio content and you will hear your phone's ringtone until the call has ended. To answer an incoming call, press the Power / Mode Button on the Power Module. Some smart devices will allow you to receive the call by EITHER pressing the Power / Mode Button OR tapping your device screen. As devices vary, you will need to test to see which method works for you. To disconnect from a call, press the Power / Mode Button once more. To reject a call and return to Bluetooth® audio, press and hold the Power / Mode Button continuously for at least 3 seconds.

CHARGING INSTRUCTIONS

Use the provided USB-C cable to charge. The USB-C Charging Port for this product is located on the side of the Power Module. It is covered by a weatherproof rubber plug to help protect the internal electronics from dust and water invasion. To charge, remove the plug and insert the charging cable into the USB-C Charging Port. When completely charged, the red light will turn off. Charging times will vary depending on AC/DC power sources and ambient air temperature. Charging times for this unit using an AC power source can vary from 1-2 hours on average. After you are satisfied with charging, replace the rubber plug into the USB-C Charging Port.

INSTRUCTIONS FOR PROPER FIT

This product comes with a number of Foam Tip sizes and shapes that can be interchanged to best fit your inner ear canal. Take a moment to test the various sizes to see which achieves the best fit for you. The proper fitting Foam Tip will provide both a comfortable fit inside your ear as well as an adequate barrier, sealing your inner ear from external noises.

Inserting Foam Tips [Figure 3]:

1. Identify which earbud is for which ear using chrome-colored Left / Right Indicators on earbuds. It is recommended to start with the left ear for easier controls.
2. With clean hands, slowly roll Foam Tip of one earbud to make thinner at end. While Foam Tip is compressed, insert into ear canal.
3. Fitting is easier if outer ear is pulled outwards and upwards during insertion.
4. Hold earbud in place until foam tip expands for snug fit.
5. Wrap bendable wire at top of earbud up, and around back of ear so earbud is secure.
6. Loop neck wire around back of neck.
7. Insert right earbud using instructions above.

PRODUCT CARE AND MAINTENANCE

This ULTRX™ Hearing Protector is a quality instrument and should be treated as a precision-engineered device.

TO ASSURE PRODUCT PERFORMANCE:

- Do not alter or modify any part of the hearing protector.
- Regularly inspect your hearing protector for any signs of wear and tear.
- Replace worn or damaged parts or Foam Tips immediately.
- Any obstruction between the Foam Tips and the ear [such as spectacles, earrings, hair, etc.] can reduce the effectiveness of the earbuds.
- Improper fit will reduce effectiveness and could result in hearing loss or injury.
- Never allow any liquid to enter the device as this may damage the components within.
- Do not store your device in any location which could expose it to excessive heat including direct sunlight, near car dashboard, heaters, radiators, etc.
- Be careful not to drop your device as this may damage components.
- Never insert any foreign objects into your device. This could result in serious damage to the unit.
- Never permit any solvents to come into contact with your device as this can damage the unit.

YOUR HEARING PROTECTOR SHOULD BE CLEANED AT REGULAR INTERVALS:

- Clean your earbuds by wiping with a damp cloth which may be treated with mild disinfectant. Do not immerse in water.
- Allow product to fully dry before use or storage.
- Store in dust proof container.

WARNING

CHOKING HAZARD. Contains small parts. Keep away from children.

FIGURE 1

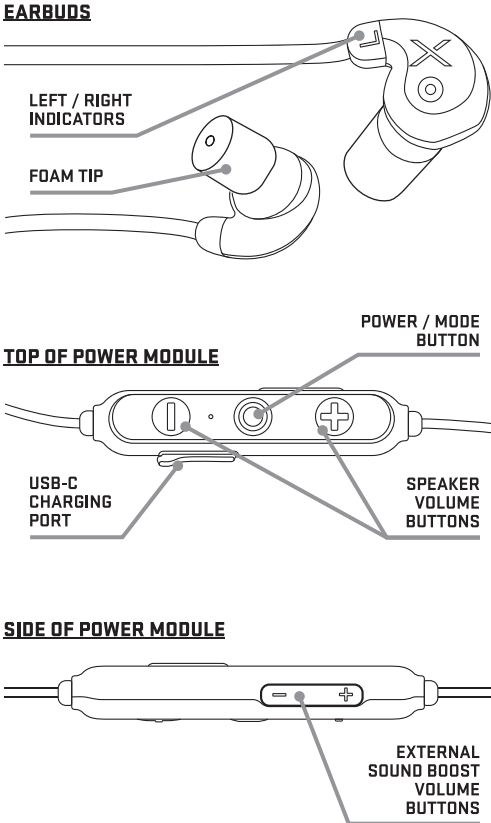


FIGURE 2

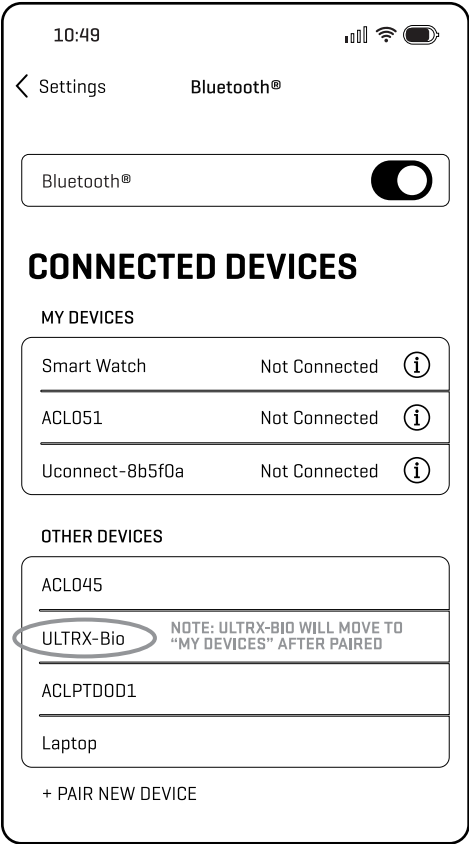
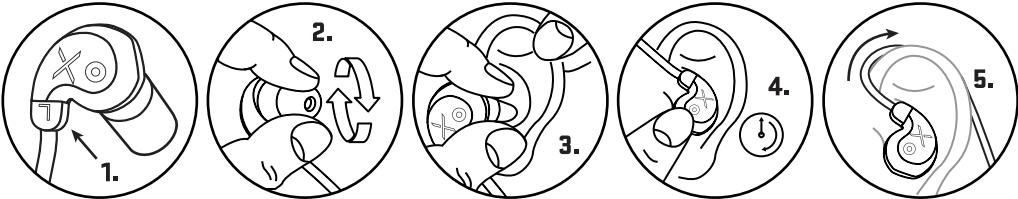


FIGURE 3: INSERTING FOAM TIPS



Noise Reduction Rating

26 DECIBELS

(WHEN USED AS DIRECTED)

THE RANGE OF NOISE REDUCTION RATINGS FOR EXISTING HEARING PROTECTORS IS APPROXIMATELY 0 TO 30 (HIGHER NUMBERS DENOTE GREATER EFFECTIVENESS)

Allen Company, Inc.
Louisville, CO

MODEL NO.
4159

Federal law prohibits removal of this label prior to purchase

EPA

LABEL REQUIRED BY U.S. EPA REGULATION 40 CFR Part 211, Subpart B

ATTENUATION DATA (TESTED IN ACCORDANCE WITH ANSI S3.19-1974)									
FREQUENCY	125	250	500	1000	2000	3150	4000	6300	8000
MEAN ATTENUATION	34.4	30.2	34.3	35.7	38.4	41.5	43.7	45.5	45.1
STANDARD DEVIATION	5.9	5.1	5.5	4.7	4.1	2.7	5.3	4.8	5.7

REGULATORY COMPLIANCE INFORMATION

The EPA has selected the Noise Reduction Rating (NRR) as the descriptor of hearing protector effectiveness to be utilized on the labels required by the U.S. EPA Regulation 40 CFR Part 211, Subpart B. The Allen Company, Inc. makes no warranties as to the suitability of the NRR as a measure of the actual protection to the individual user.

The level of noise entering a person's ear, when hearing protector is worn as directed, is closely approximated by the difference between the A-weighted environmental noise level and the NRR.

Example

- The environmental noise level as measured at the ear is 92 dBA.
- The NRR is 26 decibels [dB].
- The level of noise entering the ear is approximately equal to 66 dB(A).

CAUTION: For noise environments dominated by frequencies below 500 Hz the C-weighted environmental noise level should be used.

Improper fit of this device will reduce its effectiveness in attenuating noise. Consult **Instructions for Proper Fit**.

Although hearing protectors can be recommended for protection against the harmful effects of impulsive noise, the Noise Reduction Rating (NRR) is based on the attenuation of continuous noise and may not be an accurate indicator of the protection attainable against impulsive noise such as gunfire.

Constant or repetitive exposure to impulsive noise may lead to serious injury, temporary or permanent deafness.

This device complies with part 15 of the FCC Rules. Operation is subject to the following two conditions: (1) This device may not cause harmful interference, and (2) this device must accept any interference received, including interference that may cause undesired operation.

Changes or modifications not expressly approved by the party responsible for compliance could void the user's authority to operate this device.

NOTE: This equipment has been tested and found to comply with the limits for a Class B digital device, pursuant to part 15 of the FCC Rules. These limits are designed to provide reasonable protection against harmful interference in a residential installation.

This equipment generates, uses and can radiate radio frequency energy and, if not installed and used in accordance with the instructions, may cause harmful interference to radio communications. However, there is no guarantee that interference will not occur in a particular installation. If this equipment does cause harmful interference to radio or television reception, which can be determined by turning the equipment off and on, the user is encouraged to try to correct the interference by one or more of the following measures:

- Reorient or relocate the receiving antenna.
- Increase the separation between the equipment and receiver.
- Connect the equipment into an outlet on a circuit different from that to which the receiver is connected.
- Consult the dealer or an experienced radio/TV technician for help.

TROUBLESHOOTING TIPS		
PROBLEM:	CAUSE:	SOLUTION:
Does Not Power On	Batteries are Dead	Charge Unit Following Charging Instructions
Not Loud Enough	Batteries are Dead	
Intermittent Sounds (on and off)	Batteries are Dead	
Not Clear or Distorted	Low Battery	
Whirring Motor Sound	Low Battery	

BATTERY INFORMATION

SPECIFICATIONS:
Battery Model: Around Neck Earbud
Battery Type: 150mAh, Lithium Battery
Earbud Voltage: 3.7V
Charges in 2 hours, MAX Runtime approximate 10-12 hours

SAFETY CONCERNS:

Not dangerous with normal use. Do not remove, open, or shred the battery components within. Ingredients can be harmful, causing injury including irritation and burns. Do not inhale or ingest. Avoid skin or eye contact.

STORAGE:

- If battery is in long term storage [more than 3 months], it is recommended to recharge the battery periodically.
- Long term storage: 14°F to 95°F [-10°C to 35°C]
- Keep out of reach of children.
- Do not expose the battery to heat or fire. Avoid storage in direct sunlight.
- Do not store near or with oxidizing and acidic materials.
- Recycle or dispose of in accordance with government, state, and local regulations.

ULTRX™ WARRANTY STATEMENT

Allen Company warrants this ULTRX™ product to be free of defects in materials and workmanship, under normal use and conditions for a period of one year from the date of original purchase. Under this warranty, this unit will be replaced or repaired at our option, without charge for parts or labor (excluding batteries) for this period.

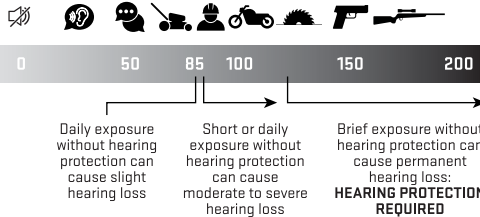
This warranty is void if any of the following occur:

- The unit is not owned by the original purchaser at the time of warranty claim
- The unit has been tampered with, opened or punctured
- The unit has been immersed in water or other liquids, allowed to be filled with dirt or dust, or otherwise physically abused

This shall be the exclusive written warranty of the original purchaser and neither this warranty or any other warranty, expressed or implied, shall extend beyond the 12-month period listed above. In no event shall Allen Company be liable for consequential damages, consequential property damage, or consequential personal injury. This warranty gives you specific legal rights, and you may have other rights, which vary from state-to-state.

HEARING PROTECTION SAFETY

Always wear hearing protection in noisy environments to avoid hearing damage.



LEARN MORE
ULTRX.COM



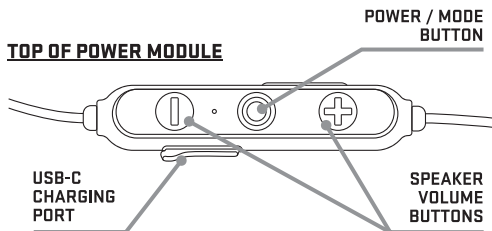
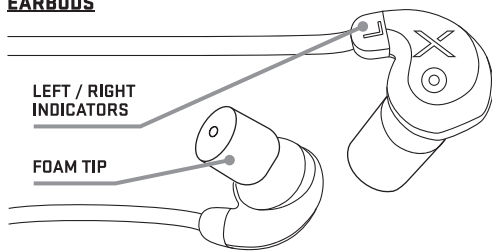
ULTRX™

BIONIC FUSE **BLUETOOTH®** AROUND THE NECK ELECTRONIC EARBUDS

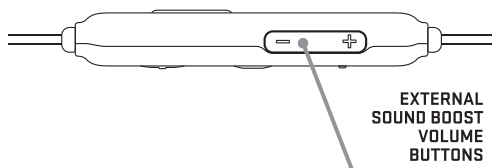
MODEL NUMBER: 4159

This guide is designed to list device actions and corresponding functions for your **ULTRX™ Bionic Fuse Bluetooth® Around the Neck Electronic Earbuds**. Please consult the separate instruction sheet included with your device for Operation Instructions, Pairing Instructions, Instructions for Proper Fit, Product Care and Maintenance, NRR Attenuation Data, Regulatory Compliance Information, and other information.

EARBUDS



SIDE OF POWER MODULE



TROUBLESHOOTING TIPS

PROBLEM:	CAUSE:	SOLUTION:
Does Not Power On	Batteries are Dead	Charge Unit Following Charging Instructions
Not Loud Enough	Batteries are Dead	
Intermittent Sounds (on and off)	Batteries are Dead	
Not Clear or Distorted	Low Battery	
Whirring Motor Sound	Low Battery	

LEARN MORE
ULTRX.COM



OPERATIONAL COMMAND GUIDE

ACTION	DESCRIPTION	LIGHT	SOUND
Turn Unit On	Press and hold the Power / Mode Button for 3 seconds to turn on the unit. The headphones will automatically connect to the most recently connected device when turned on, or automatically enter Bluetooth® Pairing Mode	Blue light flashes quickly when turning on	“Power On”
Pair Device	When in Bluetooth® Pairing Mode, phone searches for Bluetooth® “ULTRX-Bio”	Blue light always on while searching	“Connected” (when successful)
	If pairing is unsuccessful after 5 five minutes, Bluetooth® Pairing Mode automatically closes. Turn off device and try again	Blue light blinks once every 3 seconds	N/A
	Press and hold the Speaker Volume - Button for 5 seconds without letting go to force clear and re-enter the Bluetooth® Pairing Mode	Blue light flashes quickly	“Pairing”
Headphones Disconnected	Headphones will disconnect when too far away from phone. If not reconnected within 1 minute, headphones will automatically enter Bluetooth® Pairing Mode	Blue light flashes quickly	“Disconnect”
	When you manually disconnect the headphones from your phone, the headphones immediately enter Bluetooth® Pairing Mode	Blue light flashes quickly	“Disconnect”
Turn Unit Off	Press and hold the Power / Mode Button for 3 seconds to turn off the unit	Red light flashes 3 times	“Power Off”
Charge Unit	Plug the Power Cable into the USB-C Charging Port to charge device; charging also turns off the unit	The red light is always on when charging	N/A
	Full charge: the headphones are now fully charged	Red light turns off when fully charged	N/A
Increase or Decrease Volume	Press Speaker Volume +/- Buttons on Top of Power Module. Note: volume synchronizes with volume level on phone	N/A	“Ding” at minimum and maximum volume levels
Skip to Next Music Track	Double-click Volume + Button on Top of Power Module	N/A	N/A
Previous Music Track	Double-click Volume - Button on Top of Power Module	N/A	N/A
Incoming Call	Click the Power / Mode Button to answer the phone call	N/A	N/A
	Hold down the Power / Mode Button for 1 second to reject the phone call	N/A	N/A
Sound Enhancement / Protection Mode	Hold down the Power / Mode Button for 1 second to enter Sound Enhancement / Protection Mode	Red and blue lights always on at the same time	N/A
	Adjust volume level of ambient sound by pressing the External Sound Boost +/- Volume Buttons on the Side of the Power Module	N/A	N/A
	Hold down the Power / Mode Button for 3 seconds to turn off the power and exit the Sound Enhancement / Protection Mode	Red light flashes 3 times	N/A
Low Battery	The device will alert when battery is low. This will repeat every 5 minutes until charged or forced to shut down	N/A	“Low Battery”
	The device will automatically shut down when at extremely low battery level	Red light flashes 3 times	“Power Off”
Automatic Shutdown	The device will automatically shut down after 2 hours of inactivity to preserve battery	Red light flashes 3 times	“Power Off”