

**TEMPERATURE INCREASE AND POWER EFFICIENCY**  
for a Bundle of 100 Cables with 100W Injected

Temperature Rise in a 100-Cable Bundle	Power Efficiency on 100m at Max Temp
8.2°C	82.8% at 53.2°C

**Specifications**

- Reduced Diameter Jacket (Plenum) 0.250 O.D.; (Riser) 0.275 O.D.
- Sweep tested to 750MHz
- Conductor: 23 AWG solid bare copper
- 7dB alien crosstalk headroom

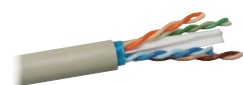
**Standards**

- UL Verified TIA 568.2-D Category 6A cable
- ISO 11801 Class EA Category 6A cable
- UL Listed CMP-LP: 0.6A; CMR-LP: 0.5A
- IEEE 802.3af (PoE), IEEE 802.3at (PoE+), IEEE 802.3bt (4PPoE Type 3 and 4)
- 10BASE-T through IEEE 802.3an 10GBASE-T Ethernet

**NEXTSPEED® Ascent Category 6A Reduced Diameter (RD) Cable, 1000 Feet**

**NVP: Plenum 71%, Riser 66%**

Color	Plenum		Riser	
	Reel in a Box	Spool	Reel in a Box	Spool
Black	<b>C6ASPDSBK</b>	<b>C6ASPPDSBK</b>	<b>C6ASRDSBK</b>	<b>C6ASPRDSBK</b>
Blue	<b>C6ASPDSB</b>	<b>C6ASPPDSB</b>	<b>C6ASRDSB</b>	<b>C6ASPRDSB</b>
Gray	<b>C6ASPDSGY</b>	<b>C6ASPPDSGY</b>	<b>C6ASRDSGY</b>	<b>C6ASPRDSGY</b>
Green	<b>C6ASPDSGN</b>	<b>C6ASPPDSGN</b>	<b>C6ASRDSGN</b>	<b>C6ASPRDSGN</b>
Orange	<b>C6ASPDSOR</b>	<b>C6ASPPDSOR</b>	<b>C6ASRDSOR</b>	<b>C6ASPRDSOR</b>
Purple	<b>C6ASPDSP</b>	<b>C6ASPPDSP</b>	<b>C6ASRDSP</b>	<b>C6ASPRDSP</b>
Red	<b>C6ASPDSR</b>	<b>C6ASPPDSR</b>	<b>C6ASRDSR</b>	<b>C6ASPRDSR</b>
White	<b>C6ASPDSW</b>	<b>C6ASPPDSW</b>	<b>C6ASRDSW</b>	<b>C6ASPRDSW</b>
Yellow	<b>C6ASPDSY</b>	<b>C6ASPPDSY</b>	<b>C6ASRDSY</b>	<b>C6ASPRDSY</b>



Copper cable – Section E

Note: See color chart on page B02.