

# NEFLINTW-R6MPW

6" FLIN Round Wafer LED Downlight with Selectable CCT

Source: 13.5W

Up to 1300lm

Type

Project

Catalog No.

Notes

## PRODUCT DESCRIPTION

FLIN is a thin recessed LED designed for easy installation into new construction or remodel applications. Luminaires include a selectable color temperature switch located on the junction box of each luminaire with a quick connect that allows for easy disconnect and mounting in the ceiling.

## FEATURES

- No housing required and includes junction box with class 2 driver
- Quick installation and cost savings
- Junction box includes kelvin temperature switch
- IC Airtight rated
- Field selectable color temperature
- Triac or ELV dimming
- cETLus Listed for Wet Locations
- 5-year limited warranty

## SPECIFICATION

**Construction:** Die-cast aluminum luminaire with spring clips for easy installation. Gasket included for airtight and wet location listing without additional caulking.

**Air Flow Restriction:** Luminaire has factory installed gasket to restrict airflow from room into ceiling plenum to <2CFM (cubic feet per minute) in accordance to ASTM E283.

**Lens:** Regressed lens with sharp baffle cuts reduces aperture brightness. Special polymer lens produces more usable light and lumens per watt.

**Junction Box:** Prewired junction box includes quick connect to LED fixtures for ease of installation. Junction box includes two 1/2" trade size and two 3/8" trade size knockouts and snap on cover. Maximum of 4 No. 12 AWG through branch circuit conductor suitable for 90°C permitted in box.

[Fixture wire length: 5" and Junction box wire length: 9"]  
**Maximum length between luminaire and driver is 40'. For longer remote driver remote run length, consult factory.**

**Mounting:** No housing is required, two tensions steel spring clips secure luminaires to the ceiling. Luminaires accept ceiling thicknesses from 3/8" to 5/16". New construction frame-in kits are available, see accessories.

**Minimum clearance:** "IC" Insulated ceiling housings are direct contact rated; no minimum clearance is required.

## ELECTRICAL

**Voltage:** 120VAC or 120-277VAC  
**Lumens / Wattage:** Up to 1300lm / 13.5W  
**Color Temperature:** Selectable CCT (2700K / 3000K / 3500K / 4000K / 5000K)  
**Color Rendering Index:** 90+ CRI  
**Beam Spread:** 115° Wide Flood  
**Operating Temperature:** 0°C to 35°C  
**Lifetime:** 50,000 hours @ L70  
**Dimming:** Dimmable down to 10% with Triac or ELV dimmer  
[Click Here](#) or check complete dimmer list at [www.NoraLighting.com](http://www.NoraLighting.com) in the "Compatibility" page under "Resources" tab

## OPTIONAL ACCESSORIES

**NEFLINTW-6OR-MPW:** Oversize Ring  
**NF-R246:** Universal New Construction Frame-In  
**NOZ-6R-F:** New Construction Frame-In with Collar  
**NEFLINTW-EW-4:** 4' Quick Connect Linkable Cable  
**NEFLINTW-EW-20:** 20' Quick Connect Linkable Cable  
**NEPK-23LEDUNV:** 23W Emergency with Remote Test Switch  
**NEPKA-20/23LEDRTS:** Ribbon Test Switch for NEPK-23LEDUNV

**Emergency:** Luminaire is compatible with NEPK-23LEDUNV (ordered separately). Remote mounted battery operates luminaire for 90 minute emergency operation with a fully charged battery. Emergency includes remote test switch, ribbon test switch accessory (NEPKA-20/23LEDRTS) ordered separately.

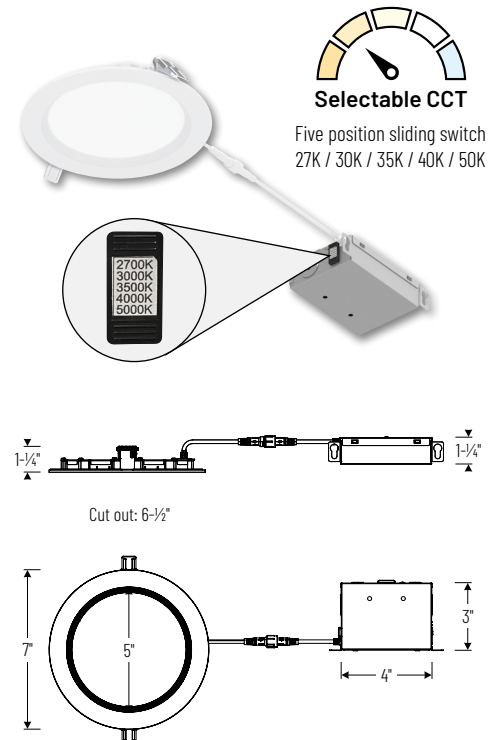
## LABELS AND LISTINGS

- cETLus Listed for Wet location
- Certified to the high efficacy requirements of California Title 24 JA8-2025
- [5-Year Limited Warranty](#)
- FCC Compliant



Performance Data		
Part Number	Lumens	CCT
NEFLINTW-R6MPW	1199lm	2700K
NEFLINTW-R6MPW	1220lm	3000K
NEFLINTW-R6MPW	1289lm	3500K
NEFLINTW-R6MPW	1306lm	4000K
NEFLINTW-R6MPW	1323lm	5000K

## PRODUCT IMAGES AND DIMENSIONS



## 6" FLIN Round Can-less Wafer LED Downlight with Selectable CCT

Input Voltage

NEFLINTW-R6MPW = 120V input  
 NEFLINTW-R6MPWLE4 = 120-277V input

## Optional Accessories

Description

NEFLINTW-6OR-MPW = Oversize Ring  
 NF-R246 = Universal New Construction Frame-In  
 NOZ-6R-F = New Construction Frame-In with Collar  
 NEFLINTW-EW-4 = 4' Quick Connect Extension Cable  
 NEFLINTW-EW-20 = 20' Quick Connect Extension Cable  
 NEPK-23LEDUNV = 23W Emergency LED Driver w/ Remote Test Switch  
 NEPKA-20/23LEDRTS = Ribbon Test Switch for NEPK-23LEDUNV

Example: NEFLINTW-R6MPW = 6" FLIN Round Can-less Wafer LED Downlight with Selectable CCT (2700K / 3000K / 3500K / 4000K / 5000K), White finish, 120V input

# NEFLINTW-R6MPW

6" FLIN Round Wafer LED Downlight Accessories

Type	
Project	
Catalog No.	
Notes	



Oversize Ring for Round

**NEFLINTW-60R-MPW**

Oversize ring covers ceiling cut-outs up to 7-1/4"

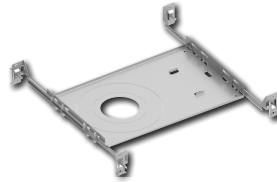


Quick Connect Extension Cables

**NEFLINTW-EW-4**  
**NEFLINTW-EW-20**

4'  
20'

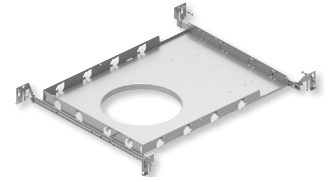
Use to extend the length between luminaire and driver box. Can be connected together to create custom lengths. Maximum length between luminaire and driver is 40'. For longer remote driver remote run length, consult factory.



Universal New Construction Frame-In

**NF-R246**

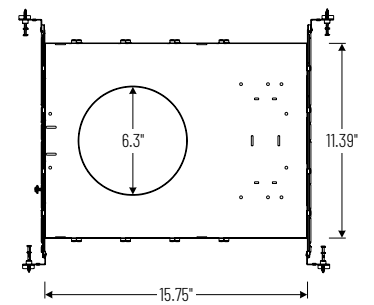
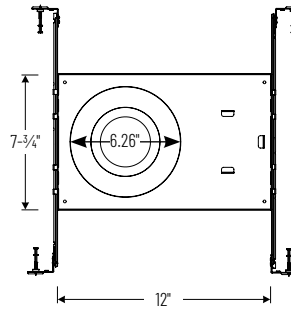
Universal new construction frame-in can be used to assist installing can-less recessed downlighting.



New Construction Frame-In with Collar

**NQZ-6R-F**

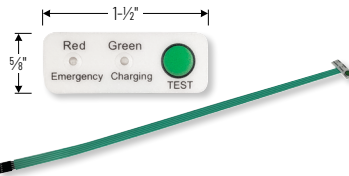
New construction frame-in with collar can be used to assist installing can-less recessed downlighting.



23W Emergency LED Driver with Remote Test Switch

**NEPK-23LEDUNV**

120-277V Emergency battery operates luminaire for 90 minute emergency operation with a fully charged battery. Requires 24 hours to charge the battery.



Ribbon Test Switch for NEPK-23LEDUNV

**NEPKA-20/23LEDRTS**

Ribbon test switch replaces remote test switch included with emergency driver. Double sided tape is pre-installed.

# PHOTOMETRICS

## 6" FLIN Round Wafer LED Downlight with Selectable CCT

Type

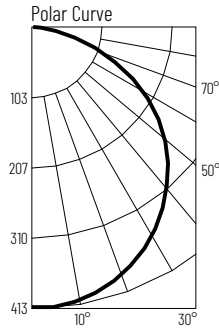
Project

Catalog No.

Notes

### Test Information

Test Number: NTR1923R1  
 Part Number: NEFLINTW-R6MPW  
 Beam Spread: 115° Wide Flood  
 Lumens: 1199lm  
 Wattage: 13.8W  
 Efficacy: 87lpw  
 CCT / CRI: 2700K / 90 CRI  
 Spacing Criteria (0°-180°): 1.28  
 Spacing Criteria (90°-270°): 1.28



### Illuminance at a Distance

Distance from Luminaire	FC at Nadir	Beam Diameter
4'	25.7fc	12'-6"
6'	11.4fc	18'-10"
8'	6.4fc	25'
10'	4.1fc	31'-4"
12'	2.9fc	37'-6"

### Zonal Lumen Summary

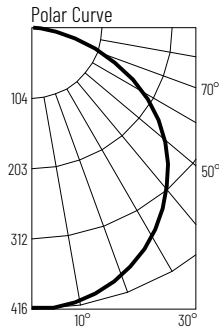
Zone	Lumens	% Luminaire
0-30	266	22.2
0-40	444	37
0-60	921	76.8
0-90	1199	100
90-180	0	0
0-180	1199	100

### Candela Table

Vertical Angles	Candela
0	411
5	408
15	395
25	370
35	331
45	282

### Test Information

Test Number: NTR1924R1  
 Part Number: NEFLINTW-R6MPW  
 Beam Spread: 115° Wide Flood  
 Lumens: 1220lm  
 Wattage: 13.68W  
 Efficacy: 89lpw  
 CCT / CRI: 3000K / 90 CRI  
 Spacing Criteria (0°-180°): 1.28  
 Spacing Criteria (90°-270°): 1.28



### Illuminance at a Distance

Distance from Luminaire	FC at Nadir	Beam Diameter
4'	25.9fc	12'-10"
6'	11.5fc	19'-2"
8'	6.5fc	25'-8"
10'	4.2fc	32'-1"
12'	2.9fc	38'-6"

### Zonal Lumen Summary

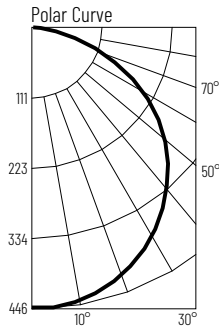
Zone	Lumens	% Luminaire
0-30	268	22
0-40	449	36.8
0-60	934	76.6
0-90	1220	100
90-180	0	0
0-180	1220	100

### Candela Table

Vertical Angles	Candela
0	415
5	412
15	399
25	374
35	336
45	288

### Test Information

Test Number: NTR1925R1  
 Part Number: NEFLINTW-R6MPW  
 Beam Spread: 115° Wide Flood  
 Lumens: 1289lm  
 Wattage: 13.37W  
 Efficacy: 96lpw  
 CCT / CRI: 3500K / 90 CRI  
 Spacing Criteria (0°-180°): 1.28  
 Spacing Criteria (90°-270°): 1.28



### Illuminance at a Distance

Distance from Luminaire	FC at Nadir	Beam Diameter
4'	27.7fc	12'-6"
6'	12.3fc	18'-8"
8'	6.9fc	24'-11"
10'	4.4fc	31'-2"
12'	3.1fc	37'-5"

### Zonal Lumen Summary

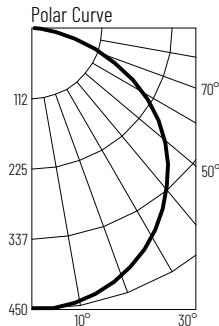
Zone	Lumens	% Luminaire
0-30	286	22.2
0-40	478	37.1
0-60	991	76.9
0-90	1289	100
90-180	0	0
0-180	1289	100

### Candela Table

Vertical Angles	Candela
0	442
5	439
15	425
25	398
35	357
45	303

### Test Information

Test Number: NTR1926R1  
 Part Number: NEFLINTW-R6MPW  
 Beam Spread: 115° Wide Flood  
 Lumens: 1306lm  
 Wattage: 13.43W  
 Efficacy: 97lpw  
 CCT / CRI: 4000K / 90 CRI  
 Spacing Criteria (0°-180°): 1.28  
 Spacing Criteria (90°-270°): 1.28



### Illuminance at a Distance

Distance from Luminaire	FC at Nadir	Beam Diameter
4'	28fc	12'-6"
6'	12.5fc	18'-10"
8'	7fc	25'-1"
10'	4.5fc	31'-4"
12'	3.1fc	37'-7"

### Zonal Lumen Summary

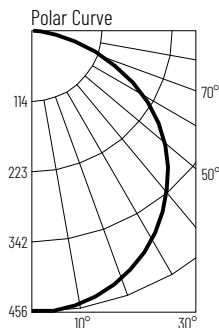
Zone	Lumens	% Luminaire
0-30	290	22.2
0-40	484	37.1
0-60	1004	76.9
0-90	1306	100
90-180	0	0
0-180	1306	100

### Candela Table

Vertical Angles	Candela
0	449
5	445
15	431
25	403
35	361
45	308

### Test Information

Test Number: NTR1927R1  
 Part Number: NEFLINTW-R6MPW  
 Beam Spread: 115° Wide Flood  
 Lumens: 1323lm  
 Wattage: 13.82W  
 Efficacy: 96lpw  
 CCT / CRI: 5000K / 90 CRI  
 Spacing Criteria (0°-180°): 1.28  
 Spacing Criteria (90°-270°): 1.28



### Illuminance at a Distance

Distance from Luminaire	FC at Nadir	Beam Diameter
4'	28.4fc	12'-6"
6'	12.6fc	18'-8"
8'	7.1fc	25'
10'	4.6fc	31'-2"
12'	3.2fc	37'-6"

### Zonal Lumen Summary

Zone	Lumens	% Luminaire
0-30	356	26.9
0-40	586	44.3
0-60	1048	79.2
0-90	1323	100
90-180	0	0
0-180	1323	100

### Candela Table

Vertical Angles	Candela
0	455
5	452
15	437
25	410
35	367
45	312