



MX-490 OWNER'S MANUAL



COMPLETE CONTROL

Introducing the MX-490

Thank you for purchasing URC's MX-490 remote control. Its easy and intuitive use helps to simplify your life while adding control of more things than thought possible.

Online Support:

This remote is sold direct only and must be installed/programmed by a **certified custom integrator**.

End-User Support:

Visit the [URC Home Page](#) for product information, owner's manuals, and support contact information.

Contact Support:

The MX-490 is a URC product sold direct only. For questions or assistance contact your Custom Installer/Programmer.

My Installer/Programmer



Technical Support

Toll Free: 800-904-0800

Main: 914-835-4484

techsupport@urc-automation.com

Hours: 9:00am - 5:00pm EST M-F

Table of Contents

Congratulations!	1	Macros: One Button -	
Using the MX-490	2	Inside a Device	35
Accessing the Setup Menu	3	Macros: All on 1 Device	36
Basic Setup	4	Macros: All Everywhere	37
Search the Database	5	Learned Commands: One Button	38
Learn	8	Learned Commands: One Button -	
Learn: On the Main Menu	9	On the Main Menu	39
Learn: Inside a Device	10	Learned Commands:	
Delete a Device	11	One Button - Inside a Device	40
Review Code Set	12	Learned Commands:	
Advanced Setup	13	All on 1 Device	41
Copy & Paste	14	Learned Commands:	
To One Device	15	All Everywhere	42
To All Devices	16	RF Setup	43
To the Main & Fav	17	All Devices Set Same	44
Macros	18	Each Device Differs	47
Setup a New Macro: On the Main Menu ..	19	Favorite Channels	50
Setup a New Macro: Inside a Device	20	Add & Edit Favs	51
Test/Edit Existing Macro: On the Main		Delete Favs	54
Menu	21	One Fav Channel	55
Test/Edit Existing Macro: Inside a Device	22	All Fav Channels	56
Hide or Display Pages	23	User Settings	57
On the Main Menu: Hide or Display Pages	24	Color Screen	58
On the Main Menu: Hide or Display		Brightness	59
Devices	25	Auto Turn Off Timing	60
Inside a Device: Hide or Display Pages ...	26	Button Lighting	61
Inside a Device: Hide or Display Buttons ...	27	Automatic On	62
Edit Labels	28	Auto Turn Off Timing	63
On the Main Menu	29	System & Battery Info	64
Inside a Device	30	Power Remaining	65
Edit Main Label	31	System Info	66
Erasing	32	Factory Default	67
Macros: One Button	33	Display Tips	68
Macros: One Button -		Specifications	69
On the Main Menu	34	Parts List	69
		Limited Warranty Statement	69

Congratulations!

Thank you for purchasing the MX-490 remote control. This unit can directly control every IR device in your home. You can also control devices located in different rooms by integrating an MRF base station. Controlling your home is simple with the MX-490 remote.

Brilliant LCD color display with hard button interface

The color LCD (Liquid Crystal Display) screen, as well as the remote buttons, light up. Once the screen is lit, each of the three buttons on either side of the screen are labeled. These button labels are based on the devices you want to watch or listen to.

User interface customization for any activity

Each Main Menu button can be customized for activities, such as watching TV or listening to the radio. These activities can contain multiple commands (macros) which enable a single button press to turn the needed devices **ON** or **OFF**.

Ultra-reliable narrow band RF - compatible with URC 418 MHz RF Base Stations

The MX-490 can communicate directly to RF base stations. This gives the MX-490 the ability to control your system without being in direct line-of-sight.

Fast setup of complex systems via Complete Control PC editor

To fully automate an audio/video system, the programmer must have a detailed knowledge of each component and how the system connects and operates. Only a trained and certified professional audio/video installer can install an MX-490 remote control in a timely and efficient manner.

Replacing the Batteries

Remove the cover by lightly pressing down on the grooves along the top and sliding the cover away from the remote. Observe the + and – polarity indicators inside the battery compartment and the batteries. Place the four AA batteries into their positions in the battery compartment. Now, replace the battery cover and slide it into place.

The **Title** displays what the main page or device you can control.

Press either of the **Page** buttons to see any other available choices.

The **Volume** and **Mute** buttons always control the sound regardless of what screen is displayed.

To access **Favorite Channels**, press and hold the **Info** button for three (3) seconds.

The **Transport buttons (Play, Stop, Skip-, Skip+, Rec, Fwd, Rew and Pause)** operate when the selected device requires them.

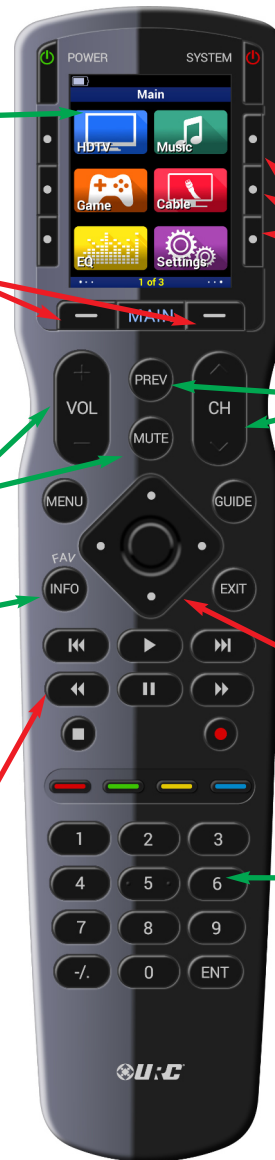
The **Light** button activates button backlighting.

The **LCD button labels** describe special features for this activity.

The **Channel** and **Previous Channel** buttons will change channels when you have selected devices like CABLE.

The **4-way cursor** buttons enable you to navigate on screen guides and menus with ease.

The **Number keypad** enters numbers for the devices you've selected. When watching Cable TV, use the number keypad to enter channel numbers. When listening to a CD, the number keypad enters track numbers.

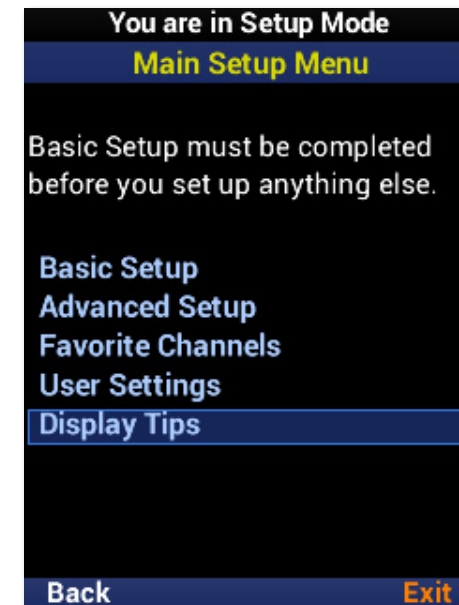


Accessing the Setup Menu

You can adjust settings for the MX-490 whenever you like by pressing and holding the **Main** button for three (**3**) seconds. When you do, the screen changes to the Tip screen. Press the **Main** button to leave the Tip screen and reach the Setup Menu. To exist the Setup Menu, **press** the LCD button **under** Exit.

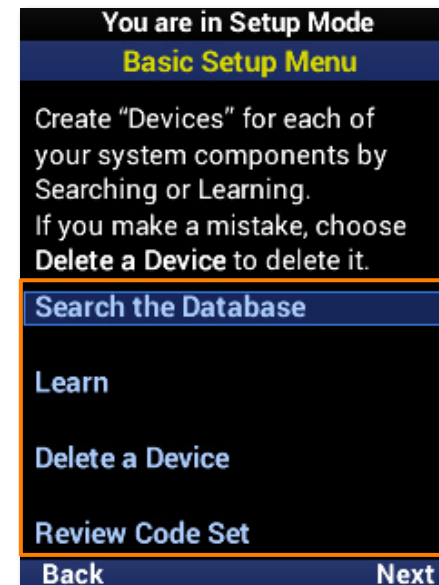
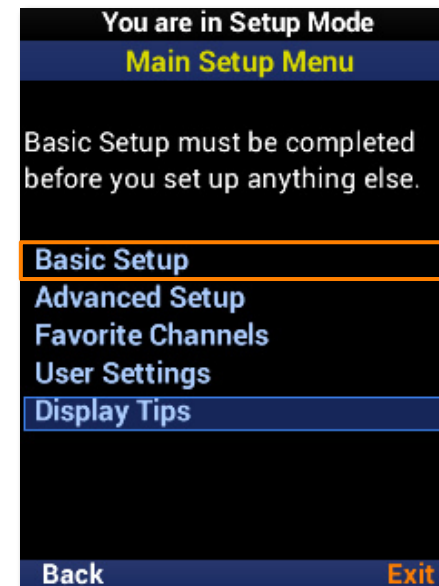
If Tips are **disabled** during initial setup, holding the Main button for three (**3**) seconds will take the user **directly** to the Setup Menu.

If no button is **pressed** for thirty (**30**) seconds, the MX-490 returns to the Main Menu.



Basic Setup

The **Basic Setup** section allows for basic programming of the MX-490. This includes **adding devices** from the built-in database, **learning IR** from other remotes, **removing devices** from the remote UI, and the ability to **review the code sets** used by a device.

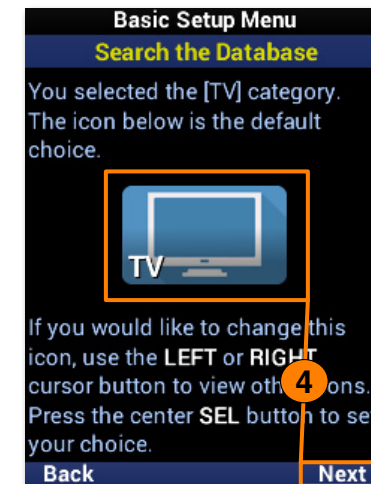
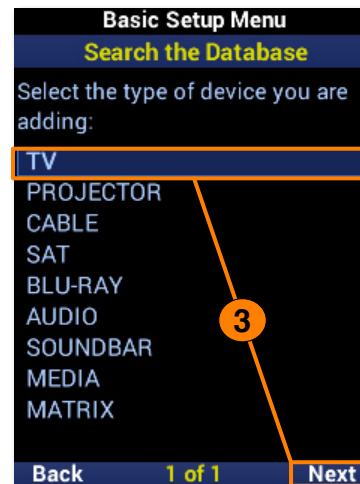
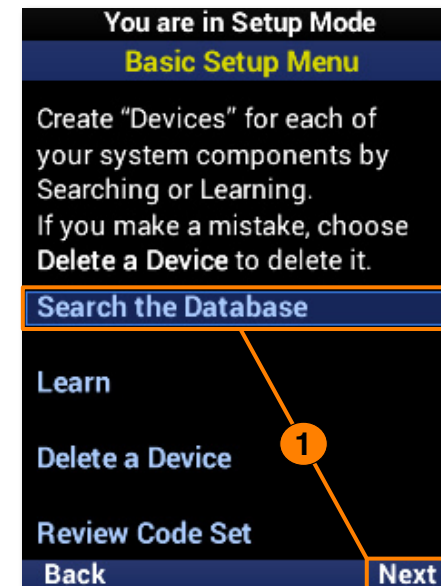


COMPLETE CONTROL

Search the Database

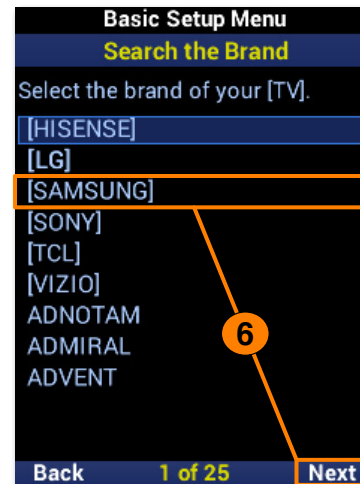
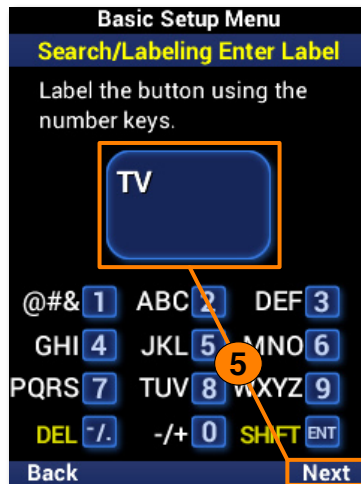
To add a **new device** to the remote, perform the following:

1. Highlight **Search the Database** and select **Next**.
2. Select a **location** on the UI for the new device. Use the **Page+** option to add another six device locations to the menu.
3. Select the **type of device** to be added and select **Next**. A **TV** is used in this example.
4. If desired, use the **left** and **right** navigation buttons to select a **new icon** and select **Next**.

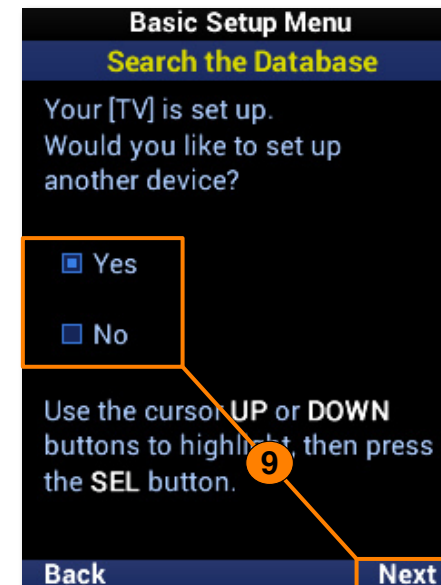
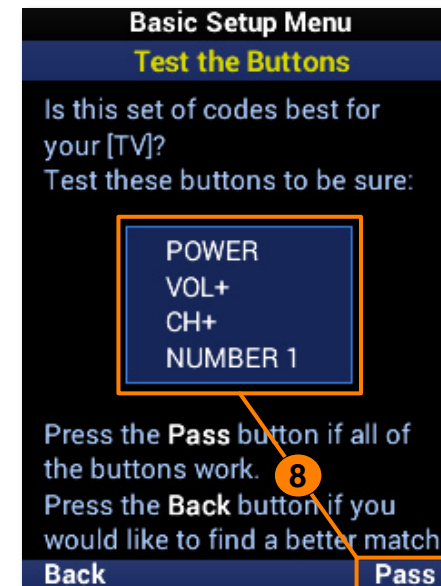


COMPLETE CONTROL

5. Enter a **label** for the new device using the number pad and select **Next**.
6. Before continuing the setup process, manually turn on the device. Highlight the **brand** of the device. Point the MX-490 at the device and select **Next**.
7. If the device turned off, select **Test** to continue. If the device is still on, press the Down navigation button to select the next code set. Repeat this step until the device turns off and then select **Test**.

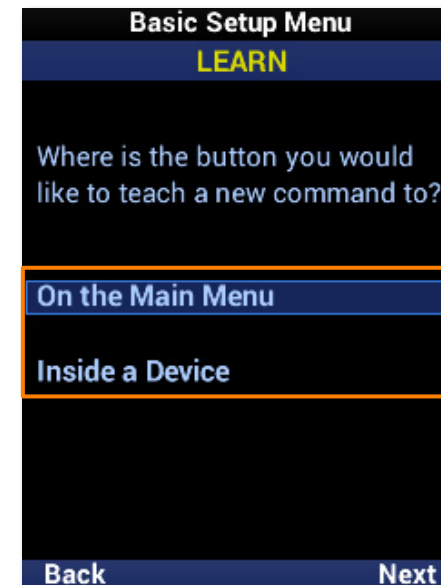
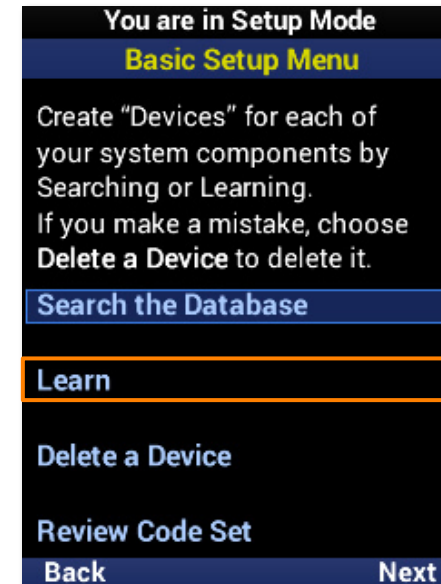


8. Confirm the code set works for the device. For a TV, test the **Power**, **Volume**, **Channel**, and other buttons to test them. Select **Pass** if the buttons are functioning properly.
9. The device has now been added. Highlight **Yes** to add another device or **No** to finish adding devices, and select **Next**.



Learn

The MX-490 is capable of **learning** IR commands from another remote. The IR window on the MX-490 is **narrower** than most of URC's remotes. Ensure the MX-490 and the other remote are on a **level surface** with the IR windows **closely facing** each other.

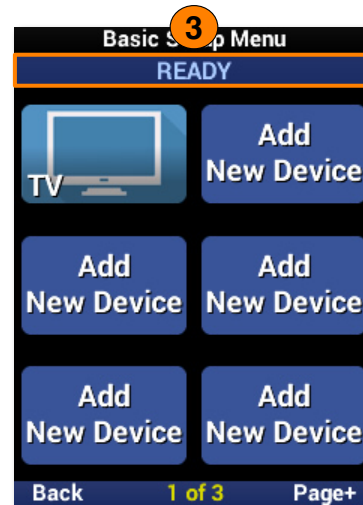
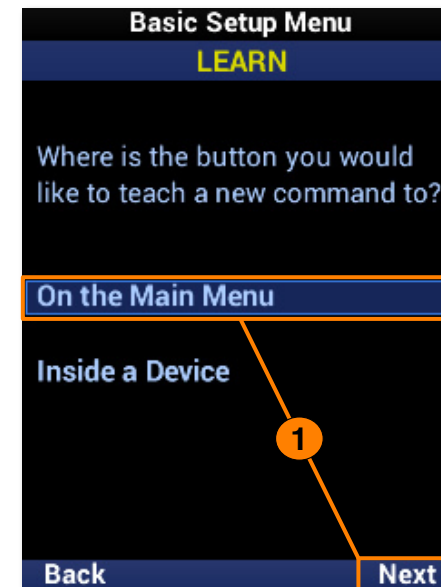


COMPLETE CONTROL

Learn: On the Main Menu

This learn method is for adding IR commands to a device on the main menu.

1. Highlight **On the Main Menu** and select **Next**.
2. Select the **device** from the menu. Use **Page+** to move between pages.
3. Once selected, the banner will flash **"READY"** to indicate it is ready to learn IR commands. Point the **other remote** directly at the MX-490 and **press a button** to learn the IR command.
4. The banner will flash **"SAVED"** and return to the device menu. A device with a learned IR command **displays** an L in a green box. Repeat this process for **each command** to be learned. Select **Done** to return to the menu.

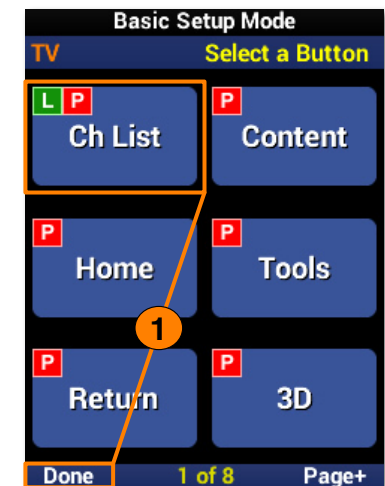
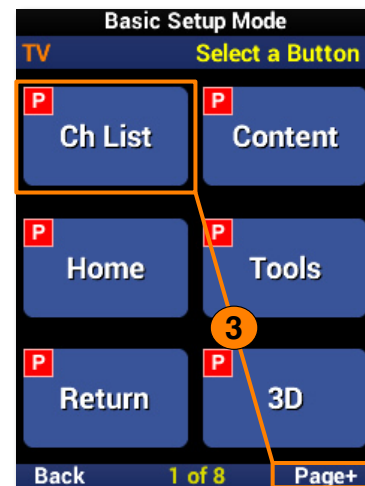
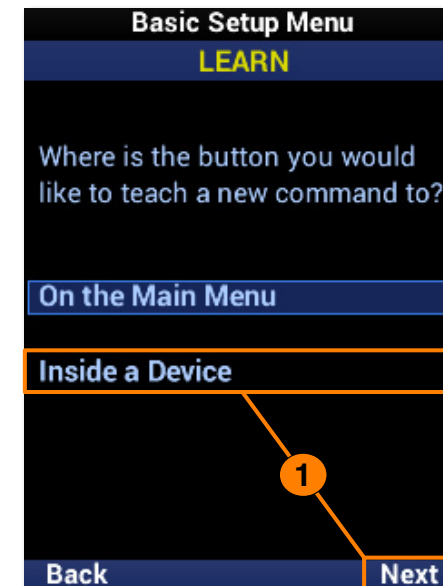


COMPLETE CONTROL

Learn: Inside a Device

This learn method is for adding IR commands within a device.

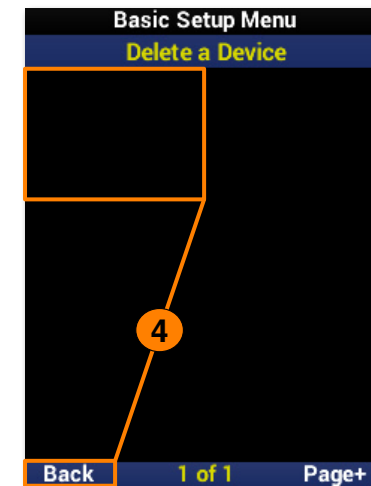
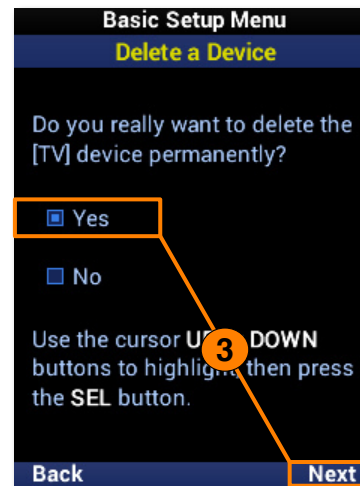
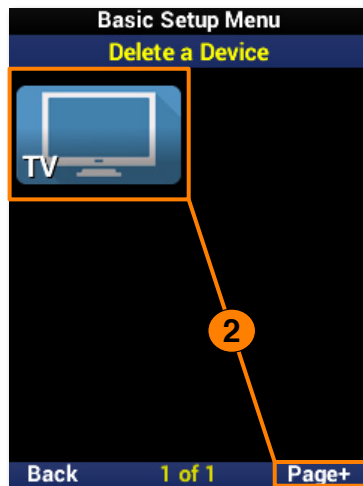
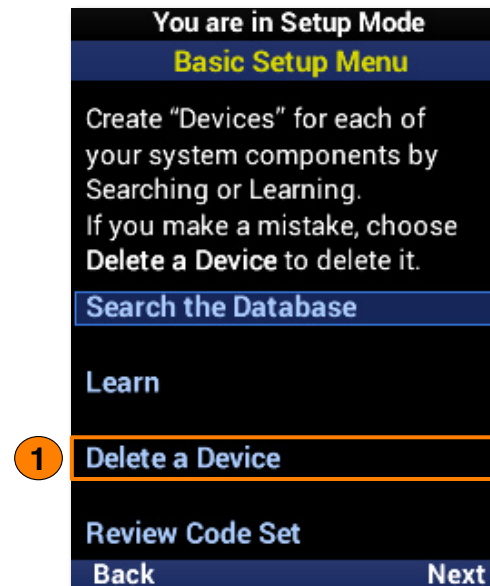
1. Highlight **Inside a Device** and select **Next**.
2. Select the **device** from the menu. Use **Page+** to move between pages.
3. Select the **function button** to learn an IR command to. Use **Page+** to move between pages.
4. Once selected, the banner will flash **"READY"** to indicate it is ready to learn IR commands. Point the **other remote** directly at the MX-490 and **press a button** to learn the IR command.
5. The banner will flash **"SAVED"** and return to the function list. A function button with a learned IR command **displays** an L in a green box. Repeat this process for **each command** to be learned. Select **Done** to return to the menu.



Delete a Device

To **remove** a device from the remote, perform the following:

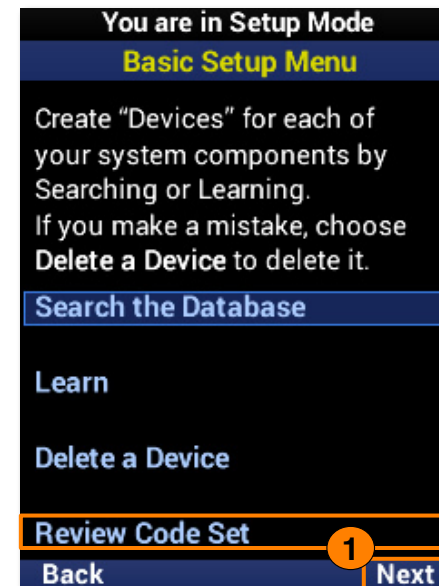
1. Highlight **Delete a Device** and select **Next**.
2. Select the **device** to be deleted. Use **Page+** to move between pages.
3. Highlight **Yes** and select **Next**.
4. The device list is displayed to confirm the removal of the device. Repeat this process for **each device** to be removed. Select **Back** to return to the menu.



Review Code Set

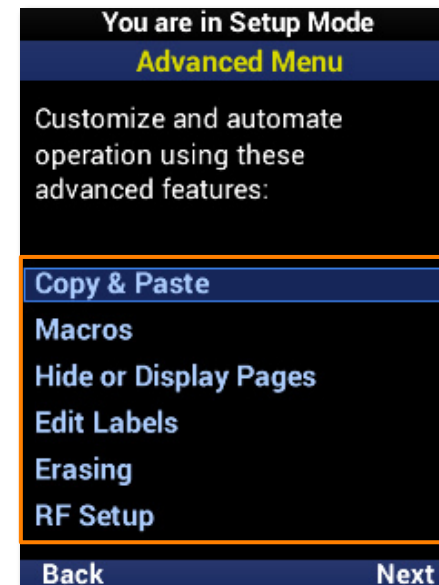
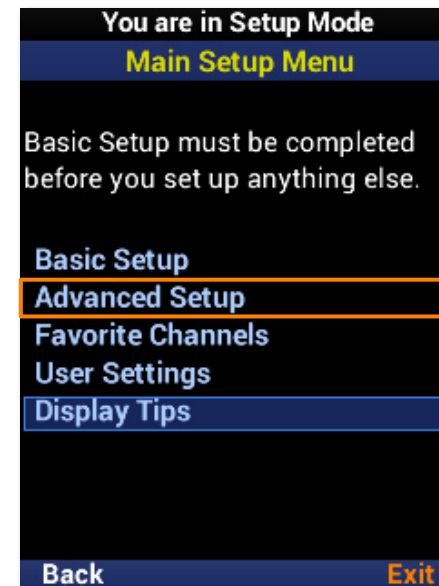
Easily check the code sets used by each device on the remote.

1. Highlight **Review Code Set** and select **Next**.
2. Each device **displays** the code set it is using. Use the **Page+** button to move between menu pages.
3. Select **Back** to return to the menu.



Advanced Setup

The **Advanced Setup** section allows for more specific, customized programming of the MX-490. This includes **copy and pasting** commands, **creating and adding macros** to devices, **hiding** devices and pages on the UI, editing device labels, **erasing** macros and learned commands, and **RF control configuration**.



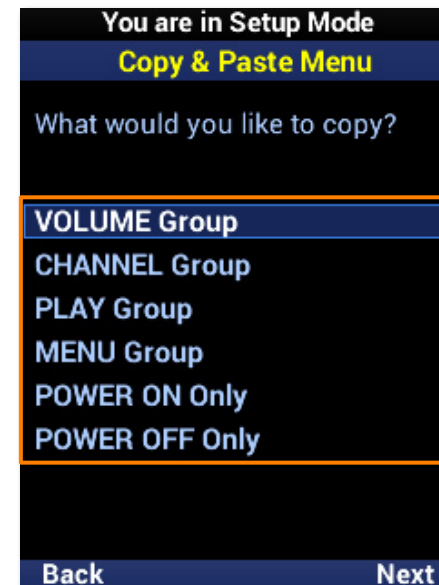
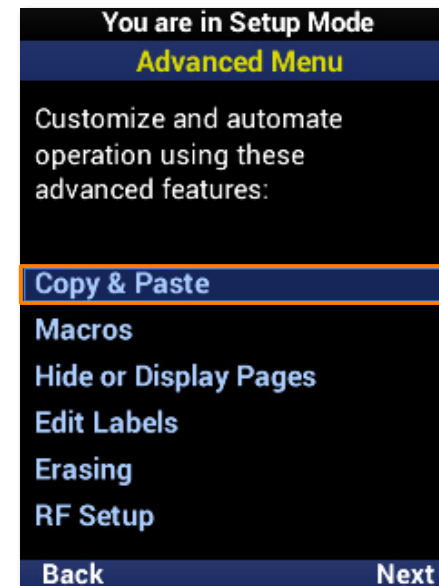
COMPLETE CONTROL

Copy & Paste

The MX-490 is capable of **copying and pasting** several groups of commands across devices. When **pasting**, there are a few options available to the programmer to make customization easier.

- **Volume Group:** Includes **Vol+**, **Vol-**, and **Mute** commands.
- **Channel Group:** Includes **Ch+**, **Ch-**, and **Prev Ch** commands.
- **Play Group:** Includes **Play**, **Pause**, **Stop**, **Rew**, **Fwd**, **Skip+**, **Skip-**, and **Rec** commands.
- **Menu Group:** Includes **Menu**, **Info**, **Guide**, **Navigation**, **Select**, and **Exit** commands.
- **Power On Only:** Includes only the **Power On** command.
- **Power Off Only:** Includes only the **Power Off** command.

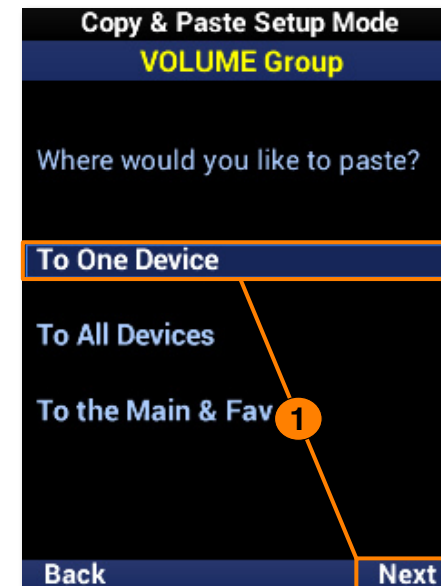
The **Volume Group** is used for all examples in this section.



To One Device

This option supports pasting commands to a **single device**.

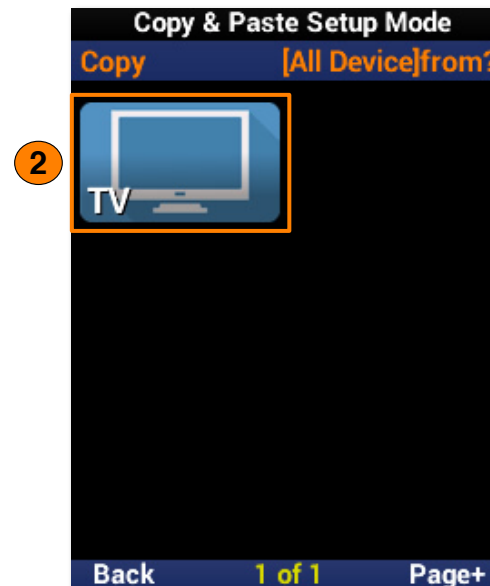
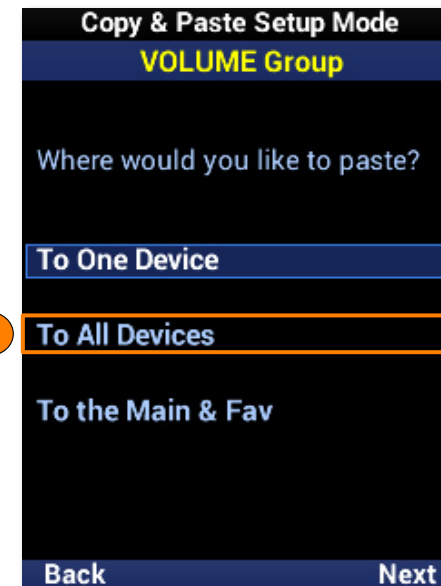
1. Highlight **To One Device** and select **Next**.
2. Select a **device** from the list. Use **Page+** to move between device pages.
3. Select the device **again** to confirm. The banner flashes "**SAVING**" and returns to the **Paste** menu when complete.



To All Devices

This option supports pasting commands to **all devices**.

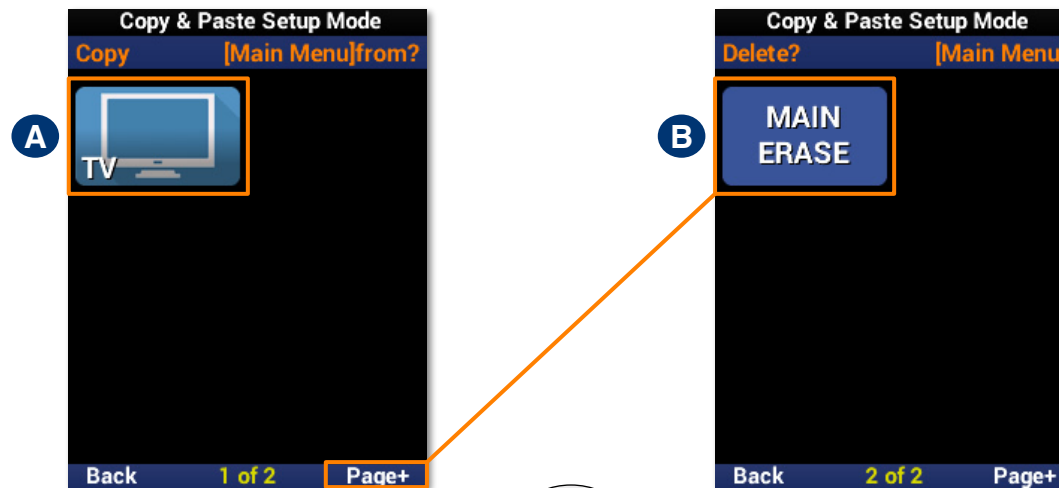
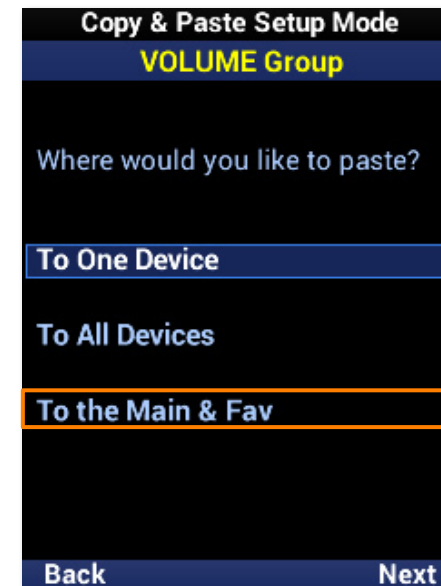
1. Highlight **To All Devices** and select **Next**.
2. Select a **device** from the list to paste the commands to all devices. The banner flashes "**SAVING**" and returns to the **Paste** menu when complete.



To the Main & Fav

This option supports pasting commands to the **Main Menu** and **Favorite Channels**.

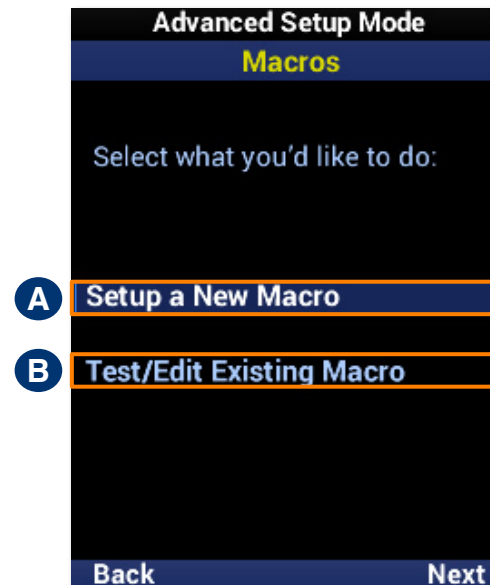
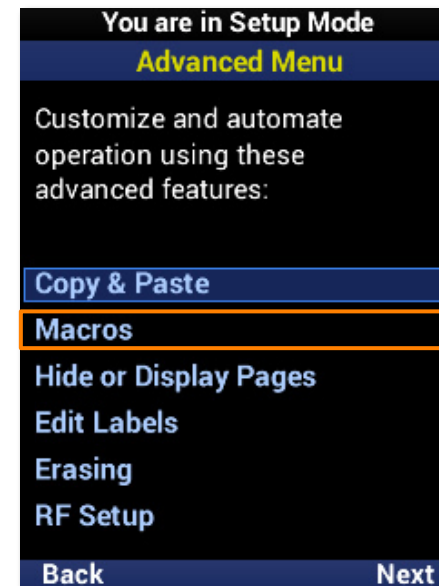
1. Highlight **To the Main & Fav** and select **Next**.
 - A. Select a **device** from the list to paste the commands to the main menu and favorite channels. The banner flashes "**SAVING**" and returns to the **Paste** menu when complete.
 - B. Select **Page+** to access the option to **erase** pasted commands from the Main Menu.



Macros

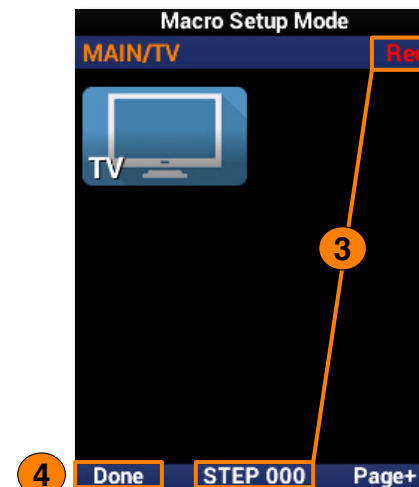
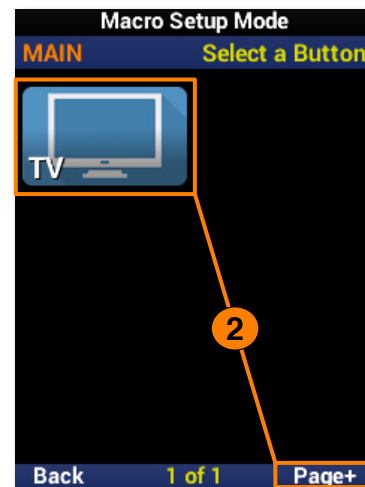
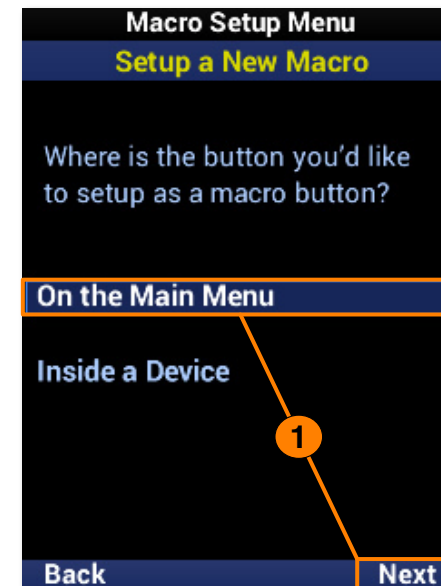
The MX-490 macro feature allows for **multiple functions** and/or **button presses** to be assigned to a single button.

- A. Setup a New Macro:** Creates a new macro.
- B. Test/Edit Existing Macro:** Edit an existing macro.



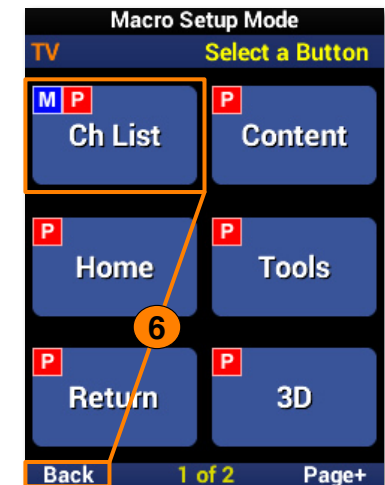
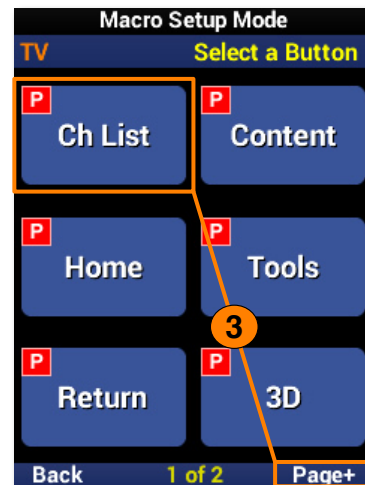
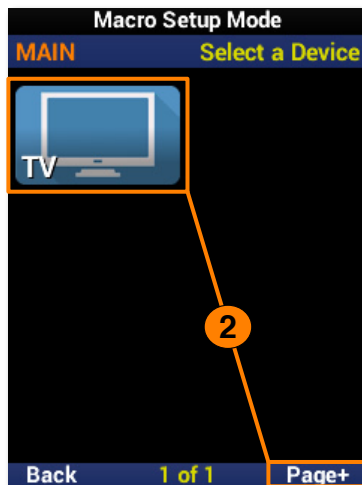
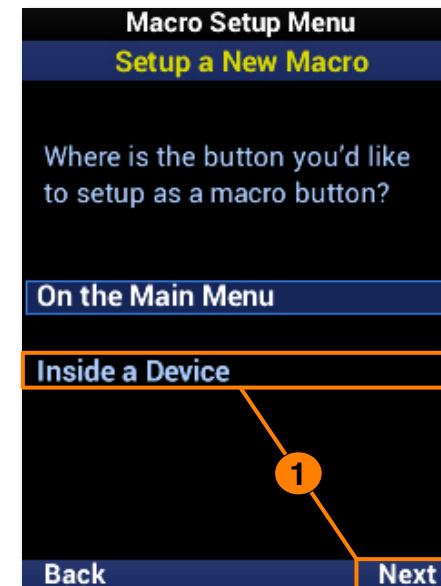
Setup a New Macro: On the Main Menu

1. Highlight **On the Main Menu** and select **Next**.
2. Select a **device** to begin recording a macro to it. Use **Page+** to move between menu pages.
3. Once selected, a **"Rec"** label appears in the top right corner and a **"Step"** counter at the bottom middle of the screen. Enter the macro by pressing the **associated buttons**.
4. Select **Done** to finish recording and save the new macro.



Setup a New Macro: Inside a Device

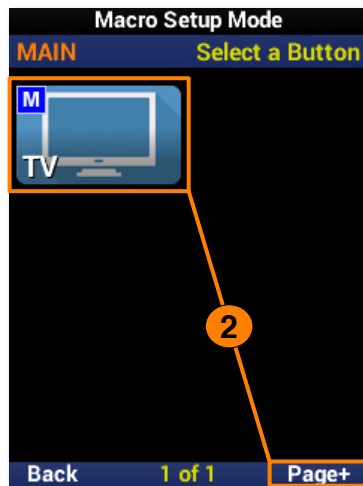
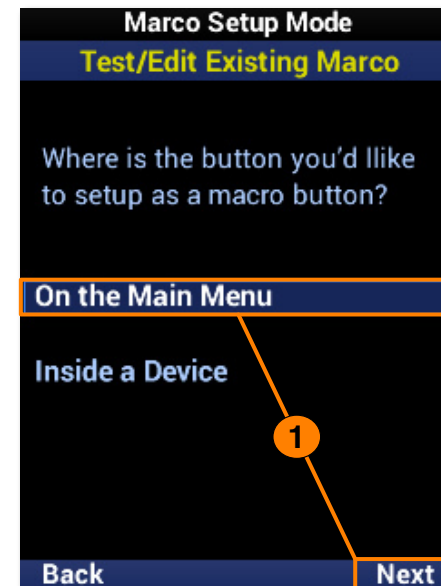
1. Highlight **Inside a Device** and select **Next**.
2. Select a **device**. Use **Page+** to move between menu pages.
3. Select a **device button** to add a macro to it. Use **Page+** to move between device pages.
4. Once selected, a **"Rec"** label appears in the top right corner and a **"Step"** counter at the bottom middle of the screen. Enter the macro by pressing the **associated buttons**.
5. Select **Done** to finish recording and save the new macro.
6. The device button displays an **"M"** to show a macro is assigned to it. Select **Back** to return to the menu.



COMPLETE CONTROL

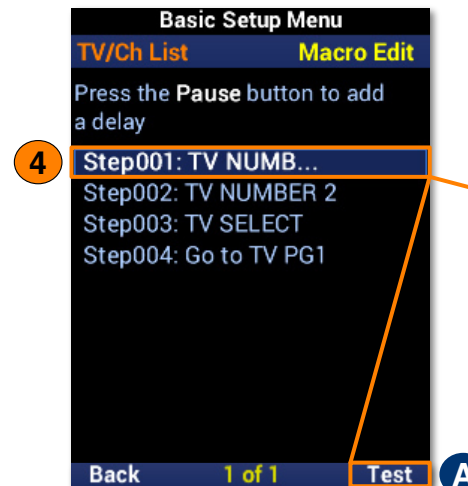
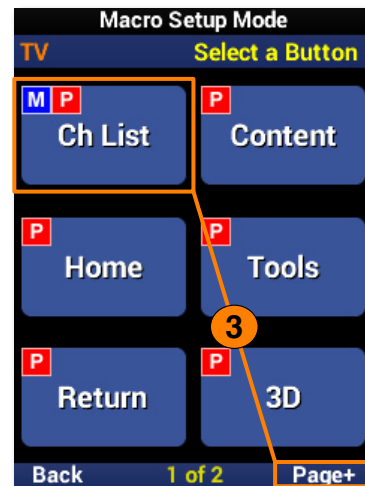
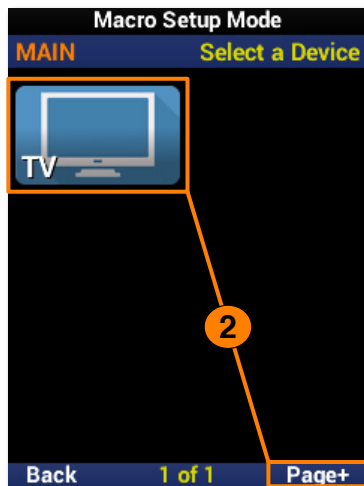
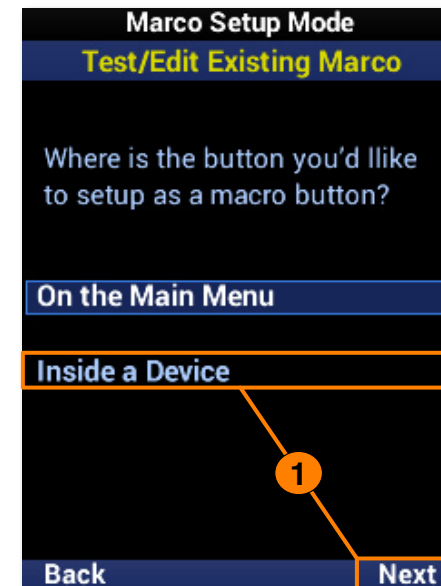
Test/Edit Existing Macro: On the Main Menu

1. Highlight **On the Main Menu** and select **Next**.
2. Select a **device** to view the macros assigned to it. Use **Page+** to move between menu pages.
3. Highlight a **macro** from the list.
 - A. Test:** Use this option to **test** commands and ensure they function correctly.
 - B. Edit Menu:** Provides several edit options, including **moving** a macro, **adding** to it, and including **delays**.
4. Select **Save** to confirm any changes.



Test/Edit Existing Macro: Inside a Device

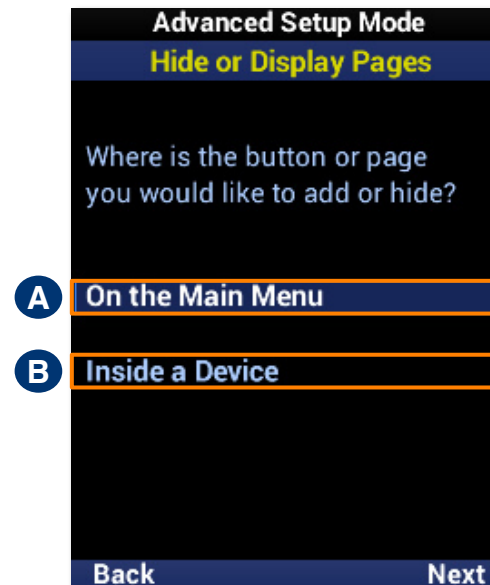
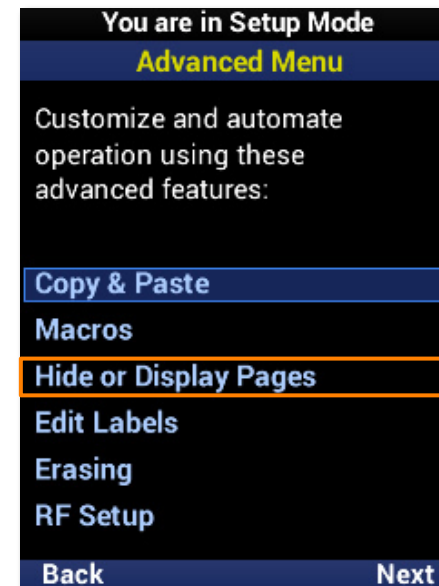
1. Highlight **Inside a Device** and select **Next**.
2. Select a **device**. Use **Page+** to move between menu pages.
3. Select a function **button**. Use **Page+** to move between device pages.
4. Highlight a **macro** from the list.
 - A. Test:** Use this option to **test** commands and ensure they function correctly.
 - B. Edit Menu:** Provides several edit options, including **moving** a macro, **adding** to it, and including **delays**.
5. Select **Save** to confirm any changes



Hide or Display Pages

This feature allows the programmer to customize what is **seen by the user** or **hidden from view**. There are two areas available for customization:

- A. **On the Main Menu:** Select this option to show or hide **pages** and **devices** located on the **Main Menu**.
- B. **Inside a Device:** Select this option to show or hide **pages** and **functions** located within a **device**.

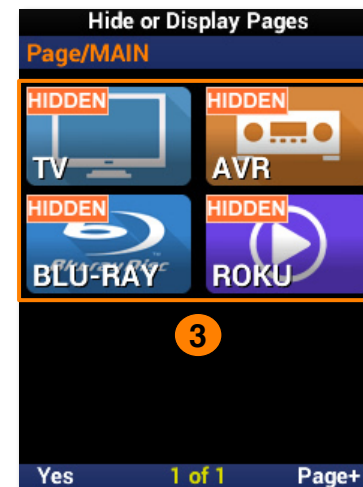
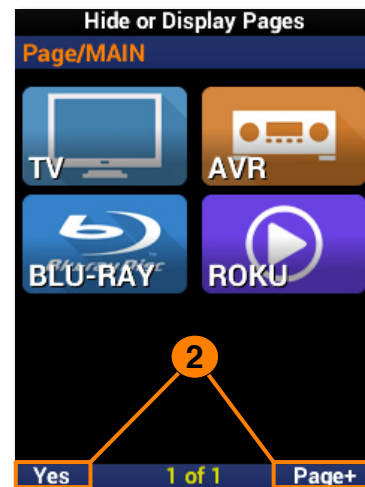
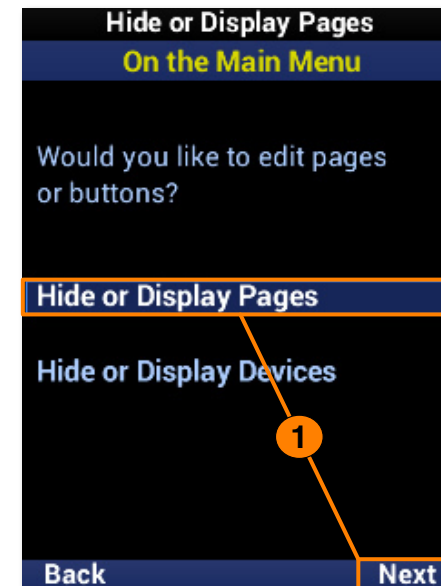


COMPLETE CONTROL

On the Main Menu: Hide or Display Pages

This option allows for Main Menu **pages** to be visible to or hidden from the user.

1. Highlight **Hide or Display Pages** and select **Next**.
2. Select a **page** to hide and select **Yes** to confirm. Use **Page+** to move between device pages.
3. The page is now **hidden**. Confirm by selecting **Hide or Display Pages** again. A "**HIDDEN**" label will appear on all devices of the hidden page. Select **Main** to exit.

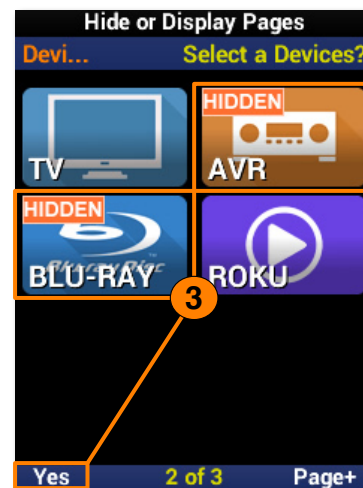
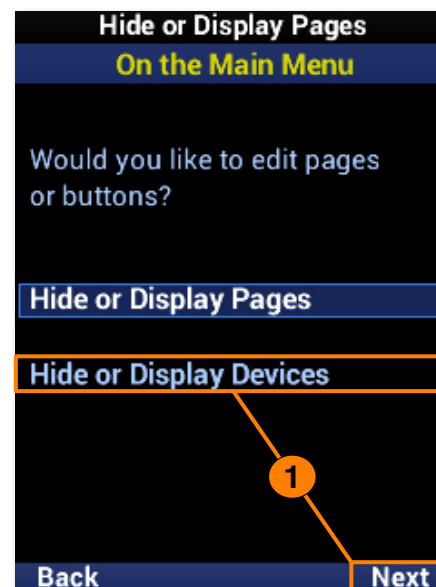


COMPLETE CONTROL

On the Main Menu: Hide or Display Devices

This option allows for Main Menu **devices** to be visible to or hidden from the user.

1. Highlight **Hide or Display Devices** and select **Next**.
2. Select each **device** to be hidden. Use **Page+** to move between device pages.
3. A **"HIDDEN"** label will appear on all devices to be hidden from view. Select **Yes** to confirm.

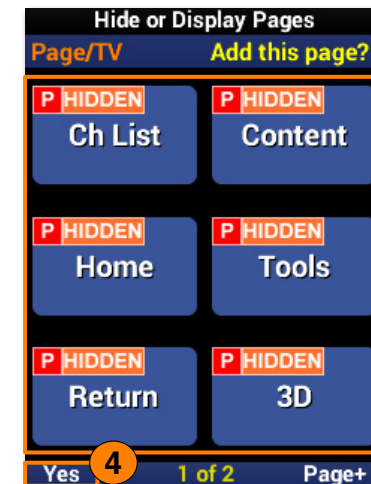
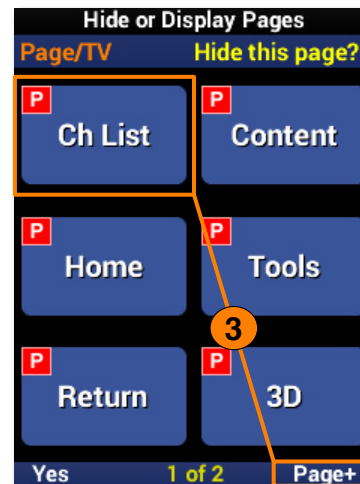
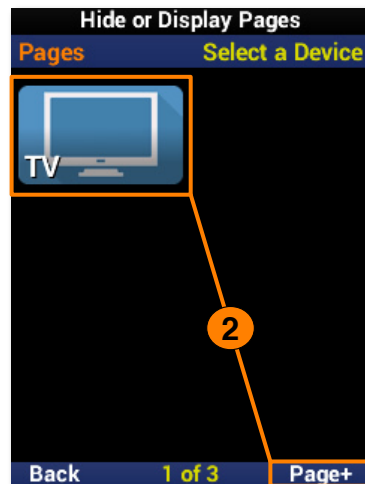
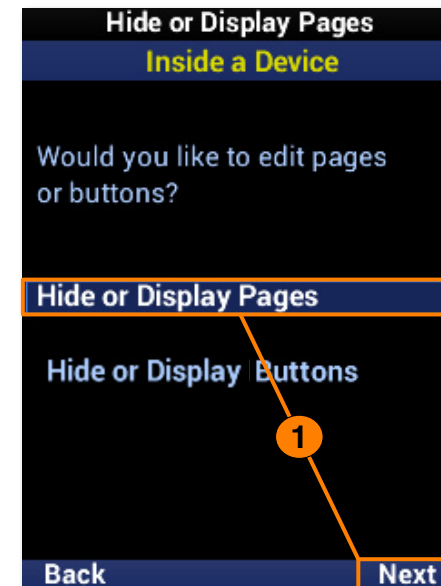


COMPLETE CONTROL

Inside a Device: Hide or Display Pages

This option allows for device **pages** to be visible or hidden from the user.

1. Highlight **Hide or Display Pages** and select **Next**.
2. Select a **device**. Use **Page+** to move between device pages.
3. Select which **page(s)** to hide from view by selecting a device. Use **Page+** to move between device pages.
4. A **"HIDDEN"** label will appear on the buttons of pages that are hidden from view. Select **Yes** to confirm.

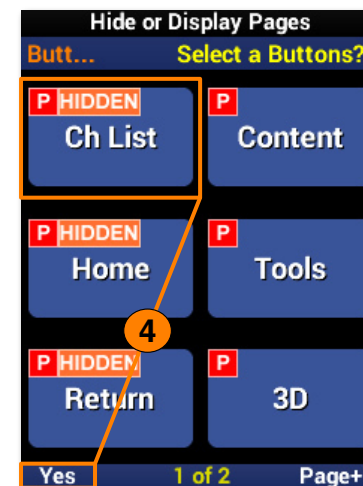
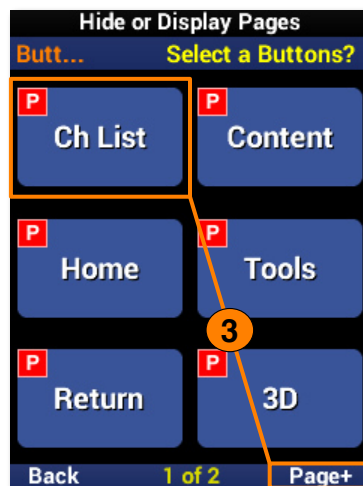
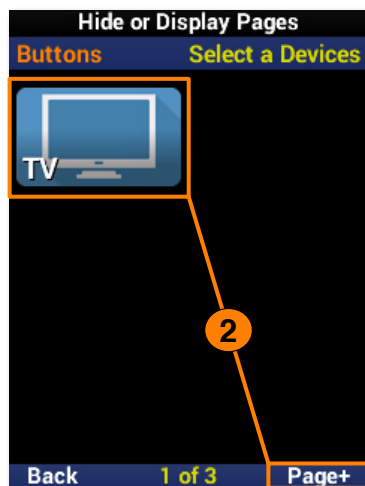
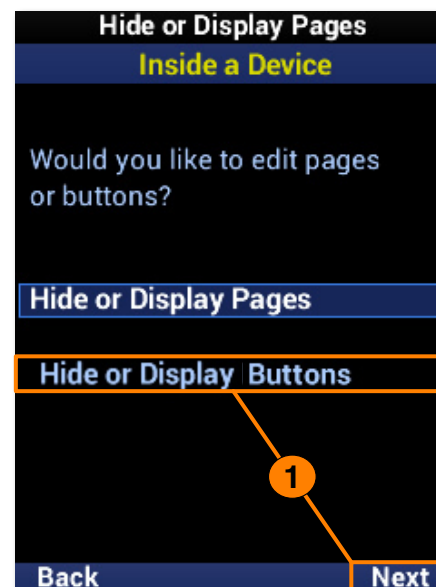


COMPLETE CONTROL

Inside a Device: Hide or Display Buttons

This option allows for device **buttons** to be visible or hidden from the user.

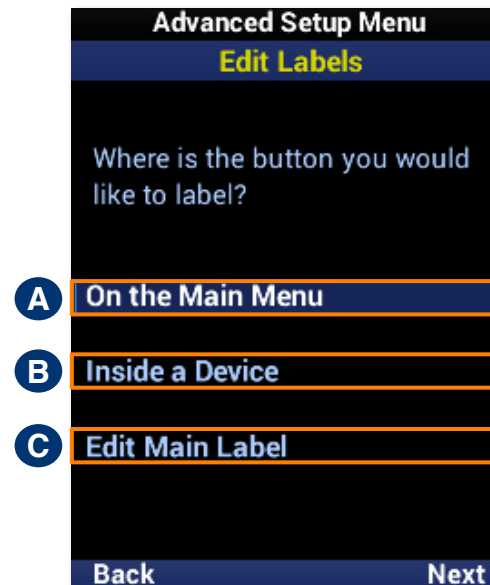
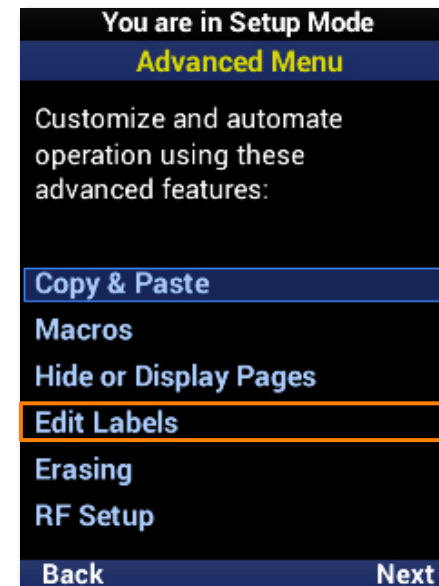
1. Highlight **Hide or Display Buttons** and select **Next**.
2. Select a **device**. Use **Page+** to move between device pages.
3. Select which **button(s)** to hide from view. Use **Page+** to move between device pages.
4. A "**HIDDEN**" label will appear on any buttons that are hidden from view. Select **Yes** to confirm.



Edit Labels

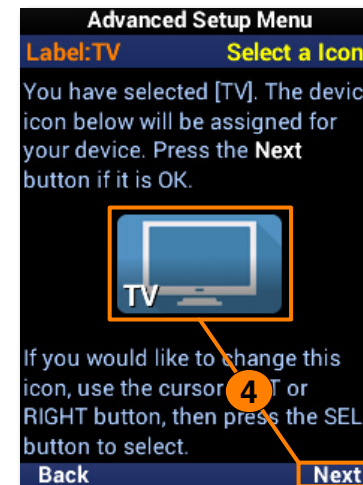
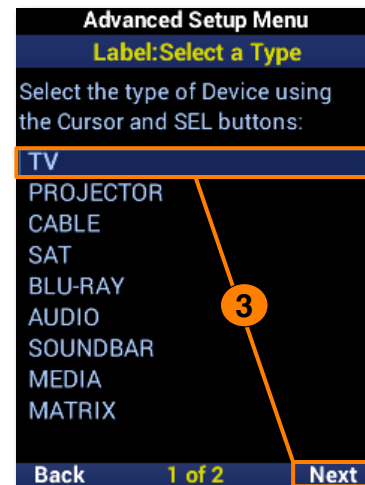
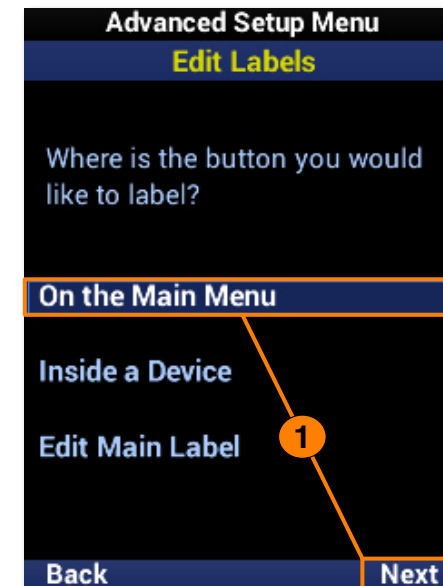
These options allow for custom labels to be added to **devices**, the **function buttons** within, and the **Main Menu**.

- A. **On the Main Menu:** Customize **device labels** on the Main Menu.
- B. **Inside a Device:** Customize **button labels** within a device.
- C. **Edit Main Label:** Customize the **Main Menu label**.



On the Main Menu

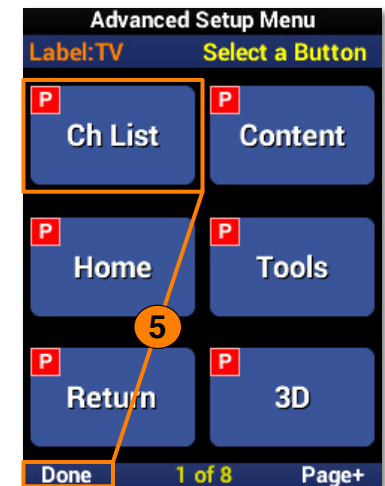
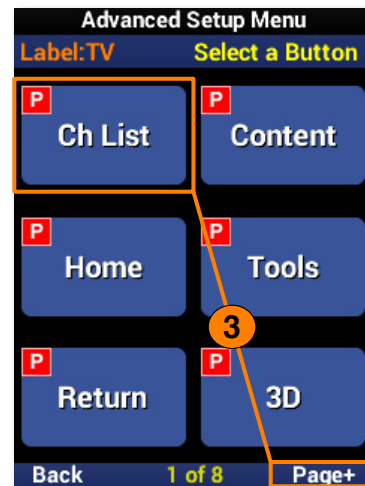
1. Highlight **Inside a Device** and select **Next**.
2. Select a **device** from the list. Use **Page+** to move between menu pages.
3. Select the device **type**.
4. Select an **icon** for the device.
5. Enter a label using the number pad and select **Next** to confirm the new label.
6. The device reflects the label change. Select **Done** to confirm.



COMPLETE CONTROL

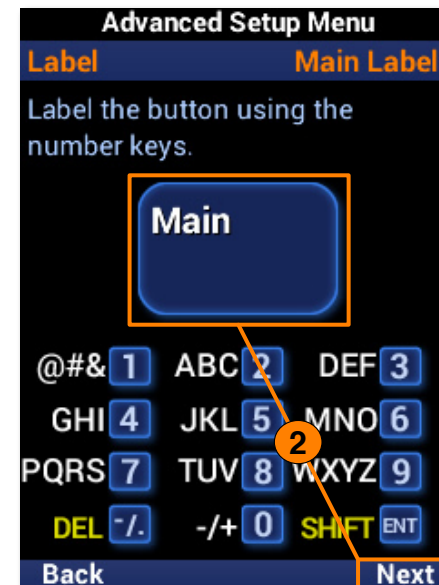
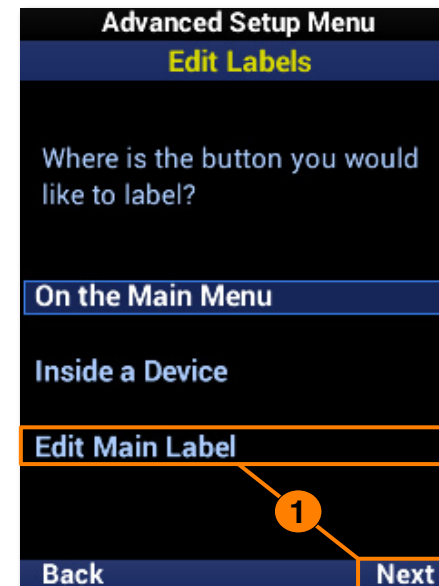
Inside a Device

1. Highlight **Inside a Device** and select **Next**.
2. Select a **device** from the list. Use **Page+** to move between menu pages.
3. Select a **button** to edit the label. Use **Page+** to move between device pages.
4. Enter a label using the number pad and select **Next** to confirm the new label.
5. The button reflects the label change. Select **Done** to confirm.



Edit Main Label

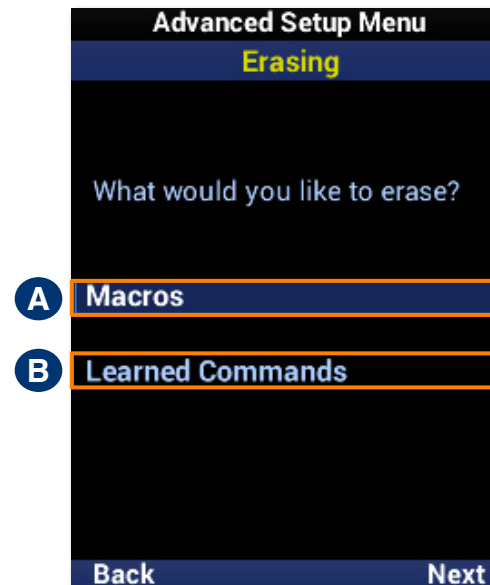
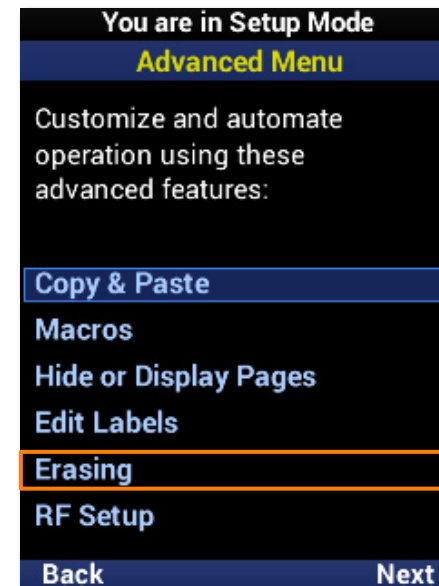
1. Highlight **Edit Main Label** and select **Next**.
2. Enter a label for the **Main Menu** using the number pad and select **Next** to confirm the new label.



Erasing

Mistakes happen. The MX-490 offers a convenient **erase** feature to quickly remove **macros** and **learned** commands.

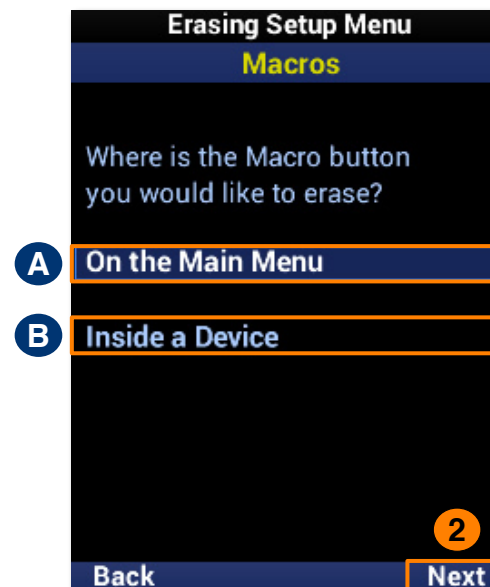
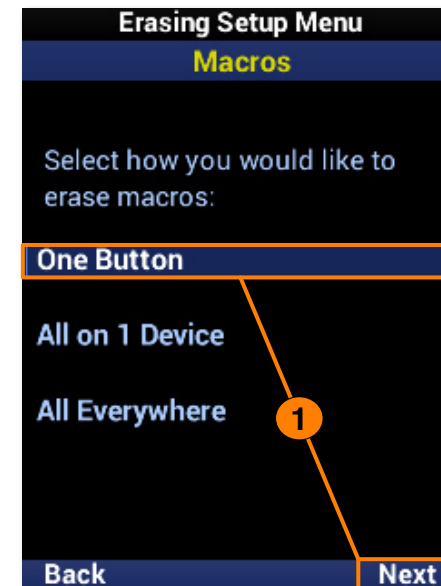
- A. Macros:** Offers options for the removal of macros only.
- B. Learned Commands:** Offers options for the removal of learned commands only.



Macros: One Button

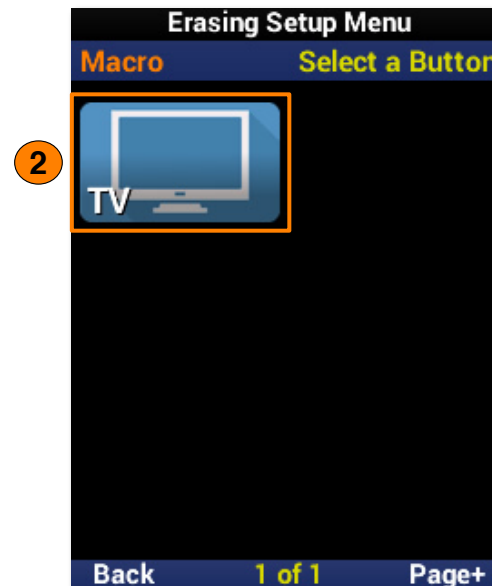
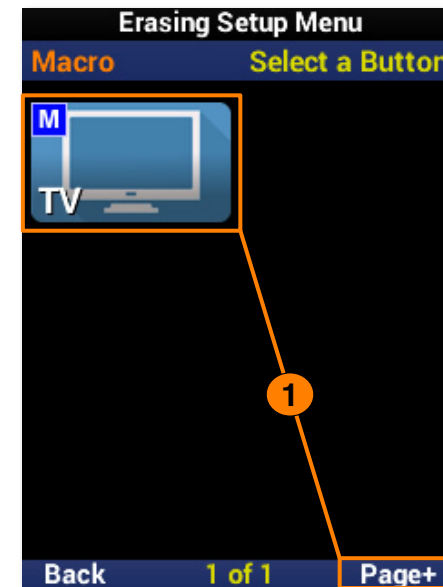
Removes a macro from a single function button.

1. Highlight **One Button** and select **Next**.
2. Highlight an **option** based on the macro location and select **Next**.
 - A. On the Main Menu:** Removes a macro from a **device** on the main menu.
 - B. Inside a Device:** Removes a macro from a **function button** within a device.



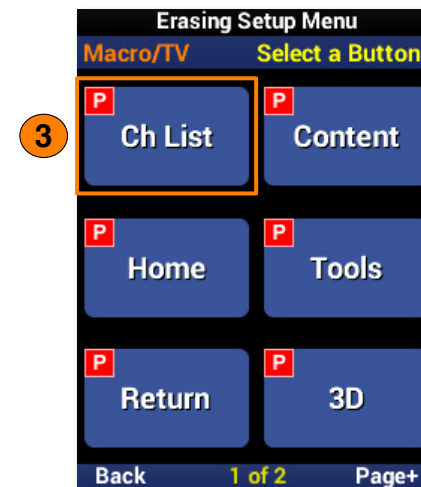
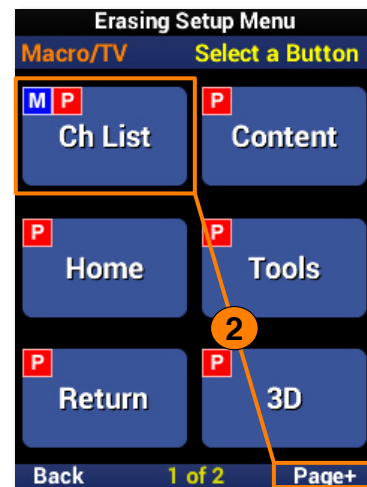
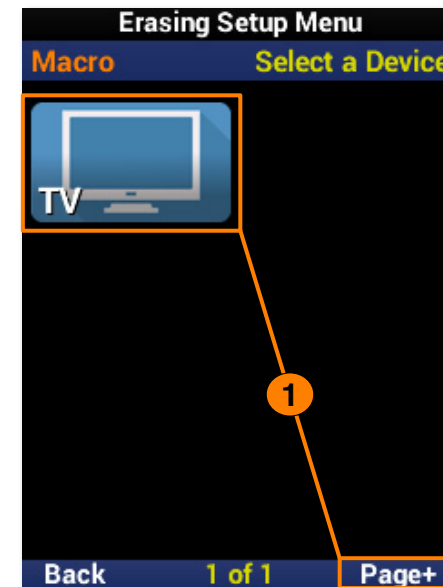
Macros: One Button - On the Main Menu

1. Select a **device**. Use **Page+** to move between menu pages.
2. The macro has been **removed** from the device.



Macros: One Button - Inside a Device

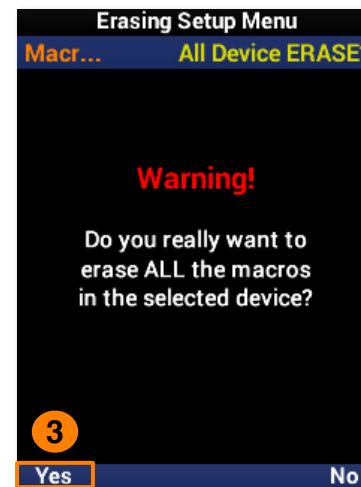
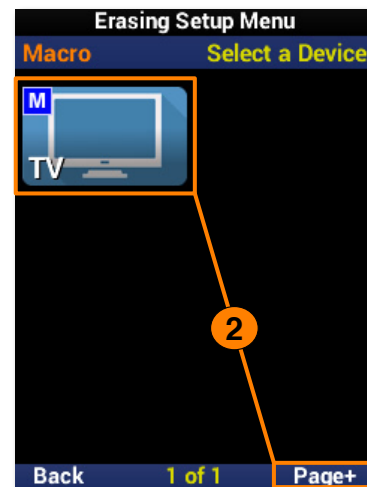
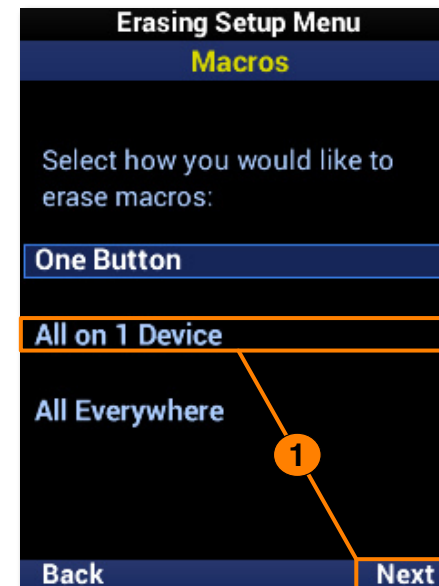
1. Select a **device**. Use **Page+** to move between menu pages.
2. Select a **function button**. Use **Page+** to move between device pages.
3. The macro has been **removed** from the function button.



Macros: All on 1 Device

Removes all macros from a single device.

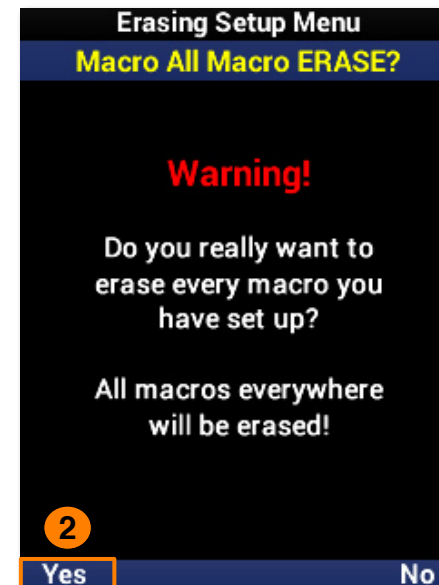
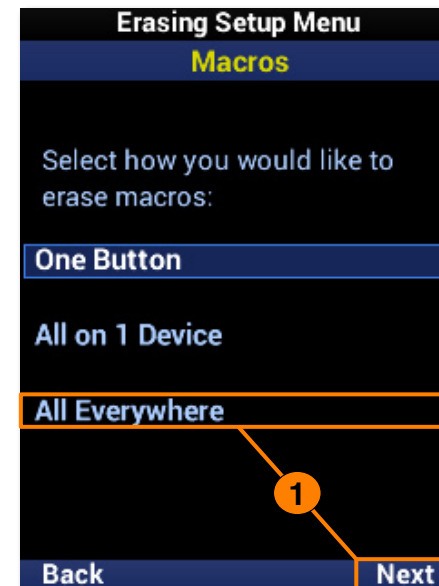
1. Highlight **All on 1 Device** and select **Next**.
2. Select a **device** to remove all the macros from. Use **Page+** to move between menu pages.
3. Select **Yes** to confirm the removal of **all macros** assigned to the device and its functions.



Macros: All Everywhere

Removes all macros from the remote.

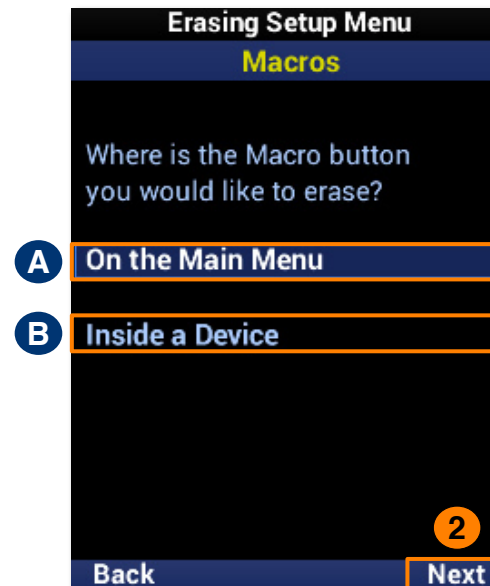
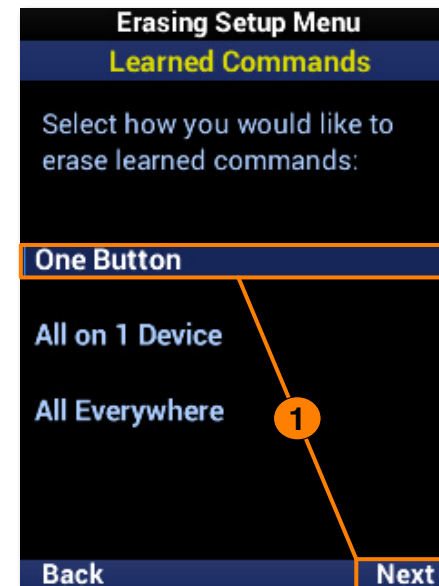
1. Highlight **All Everywhere** and select **Next**.
2. Select **Yes** to confirm the removal of **all macros** on the remote.



Learned Commands: One Button

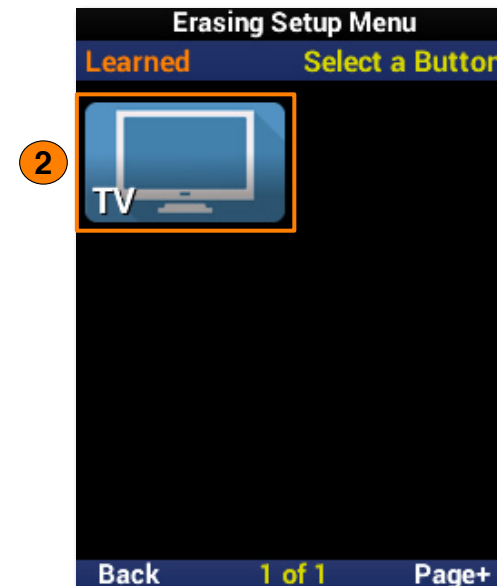
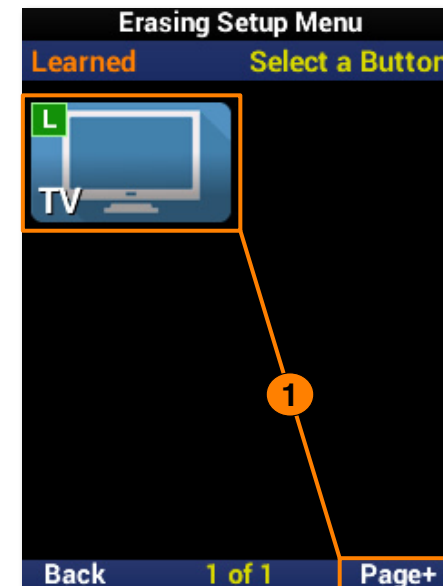
Removes a macro from a single function button.

1. Highlight **One Button** and select **Next**.
2. Highlight an **option** based on the macro location and select **Next**.
 - A. On the Main Menu:** Removes a macro from a **device** on the main menu.
 - B. Inside a Device:** Removes a macro from a **function button** within a device.



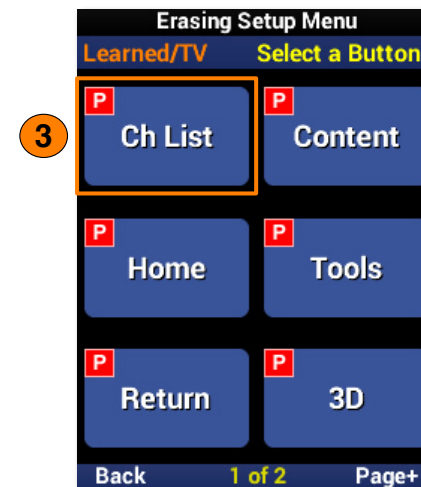
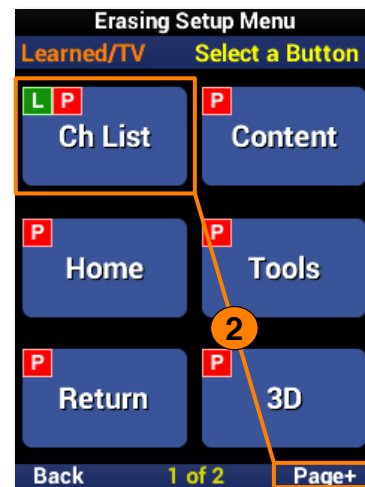
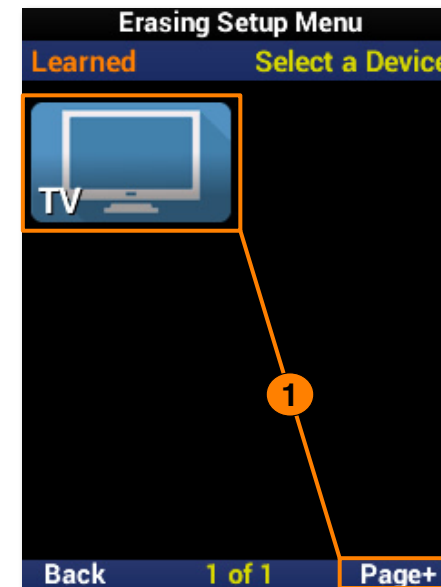
Learned Commands: One Button - On the Main Menu

1. Select a **device**. Use **Page+** to move between menu pages.
2. The learned command has been **removed** from the device.



Learned Commands: One Button - Inside a Device

1. Select a **device**. Use **Page+** to move between menu pages.
2. Select a **function button**. Use **Page+** to move between device pages.
3. The learned command has been **removed** from the function button.

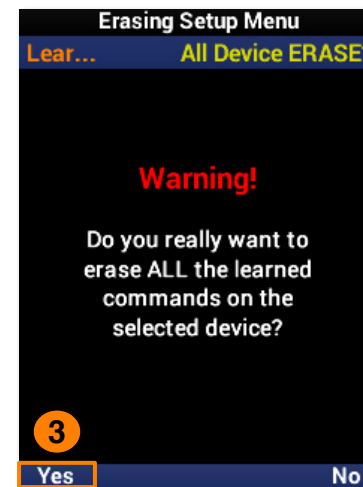
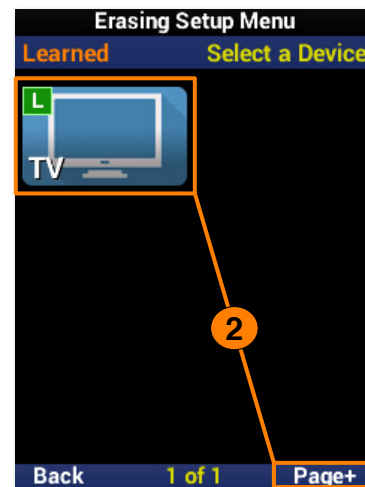
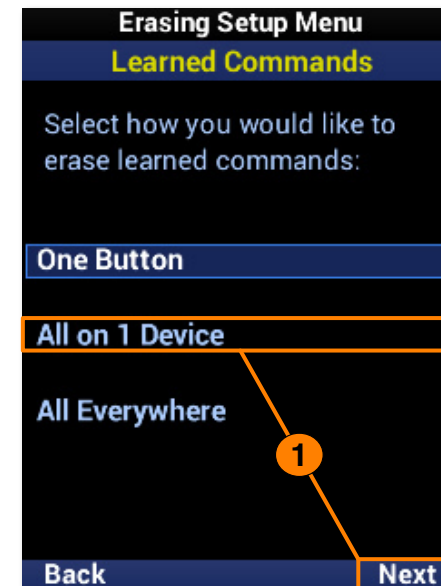


COMPLETE CONTROL

Learned Commands: All on 1 Device

Removes all learned commands from a single device.

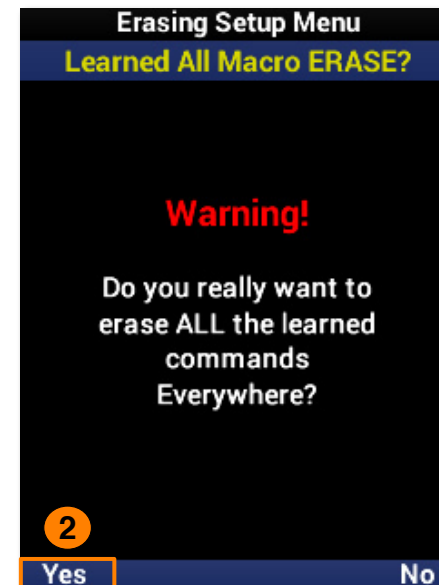
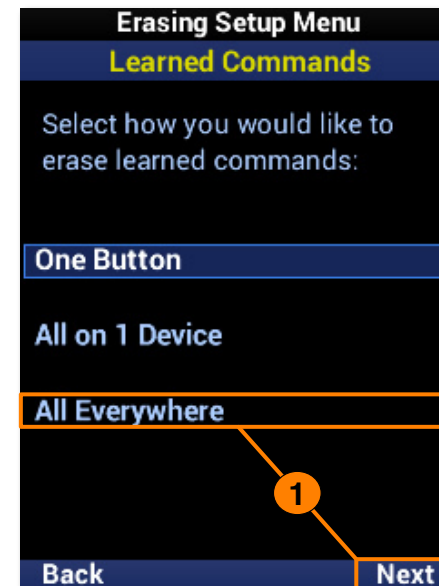
1. Highlight **All on 1 Device** and select **Next**.
2. Select a **device** to remove all the learned commands from. Use **Page+** to move between menu pages.
3. Select **Yes** to confirm the removal of **all learned commands** assigned to the device and its functions.



Learned Commands: All Everywhere

Removes all learned commands from the remote.

1. Highlight **All Everywhere** and select **Next**.
2. Select **Yes** to confirm the removal of **all learned commands** on the remote.

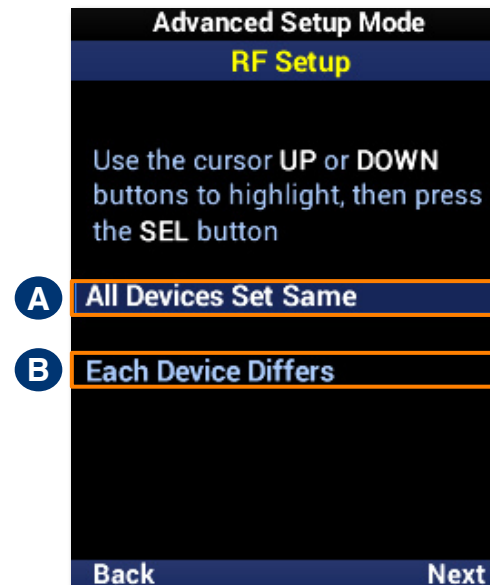
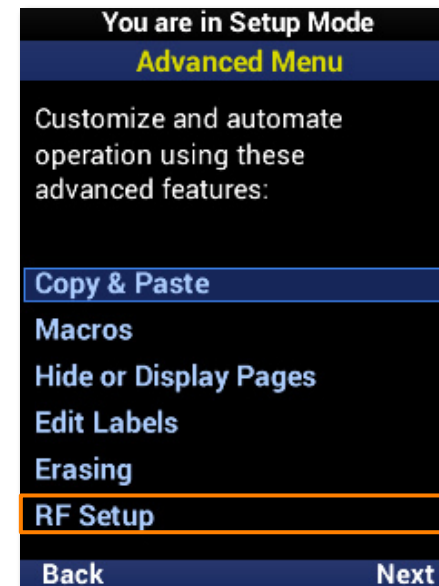


COMPLETE CONTROL

RF Setup

The MX-490 is capable of sending **both IR** and **RF** commands. RF control **requires additional devices** to receive commands from the remote.

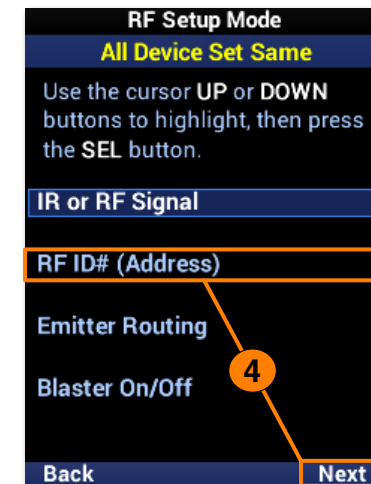
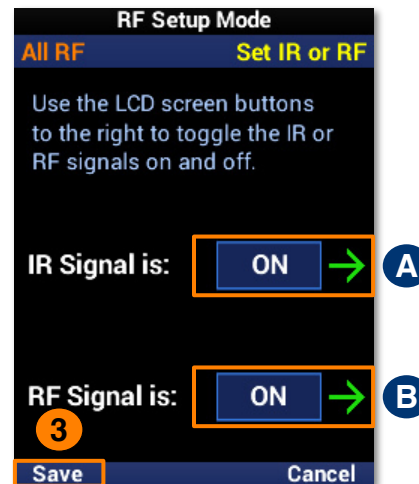
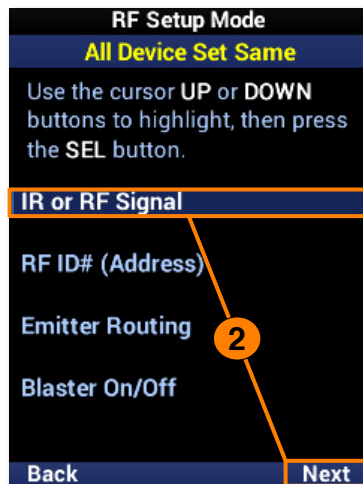
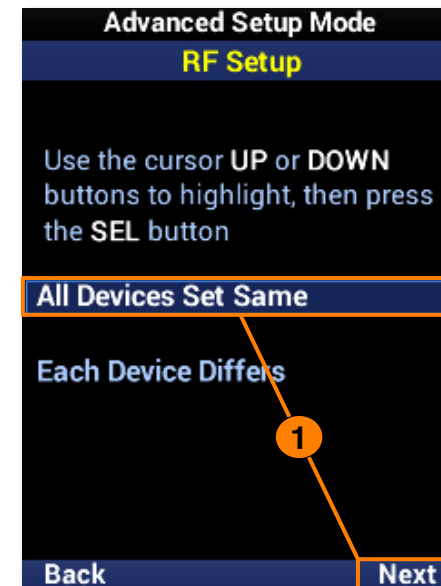
- A. All Devices Set Same:** Select this option to configure the **entire remote** for a single RF ID.
- B. Each Device Differs:** Select this option to configure **each device** for IR and RF.



COMPLETE CONTROL

All Devices Set Same

1. Highlight **All Devices Set Same** and select **Next**.
2. Highlight **IR or RF Signal** and select **Next**.
 - A. **IR Signal is:** Use the LCD button to **enable** or **disable** IR.
 - B. **RF Signal is:** Use the LCD button to **enable** or **disable** RF.
3. Select **Save** to confirm any changes.
4. Highlight **ID# (Address)** and select **Next**.



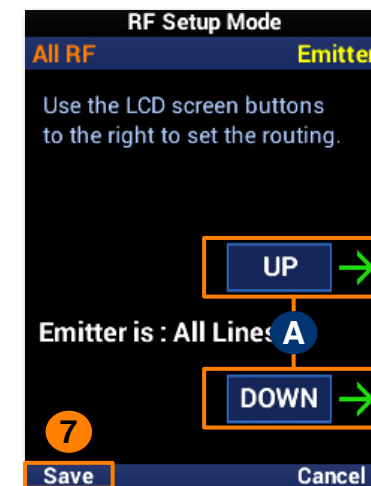
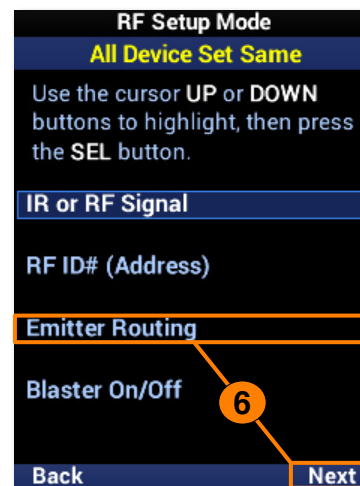
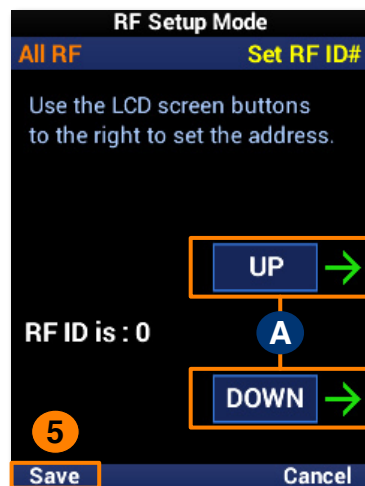
COMPLETE CONTROL

A. RF ID is: Use the LCD buttons to set the **RF ID** number.

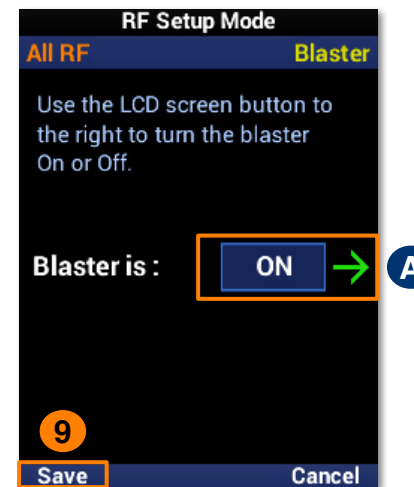
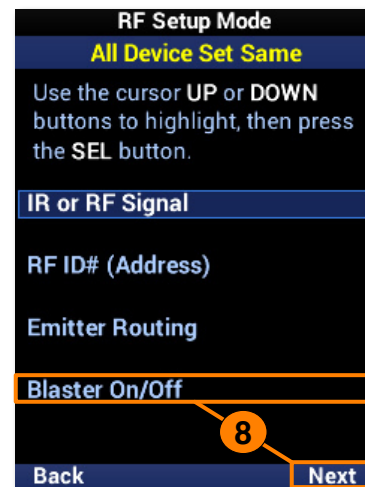
5. Select **Save** to confirm any changes.
6. Highlight **Emitter Routing** and select **Next**.

A. Emitter is: Use the LCD buttons to set the **emitter line** number.

7. Select **Save** to confirm any changes.

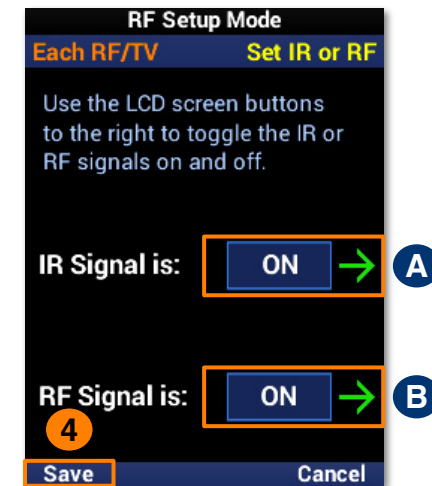
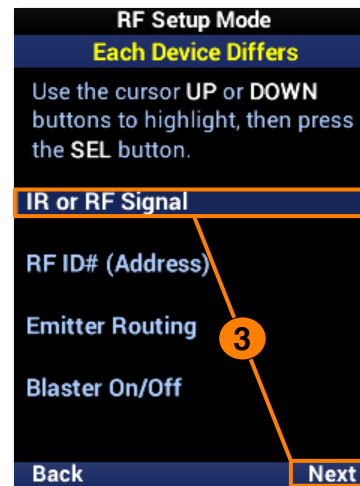
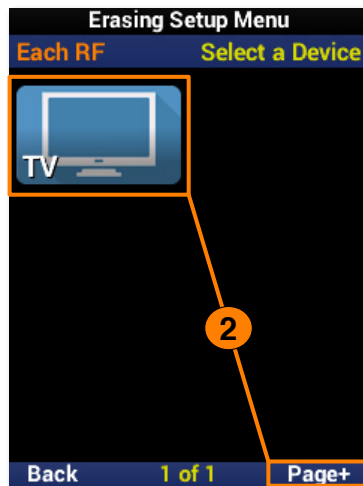
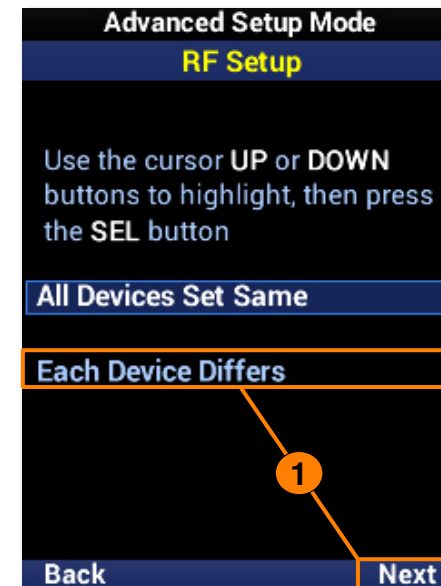


8. Highlight **Blaster On/Off** and select **Next**.
 - A. Blaster is:** Use the LCD button to **enable** or **disable** the IR Blaster.
9. Select **Save** to confirm any changes.



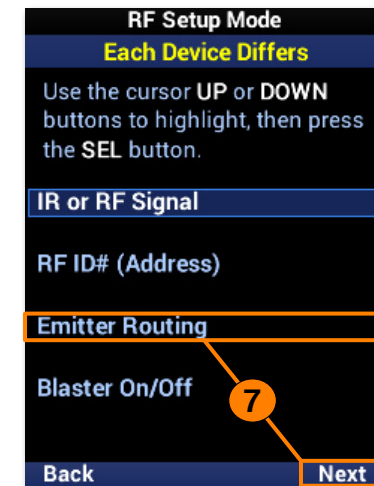
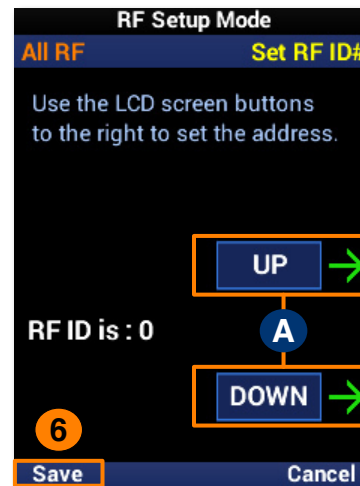
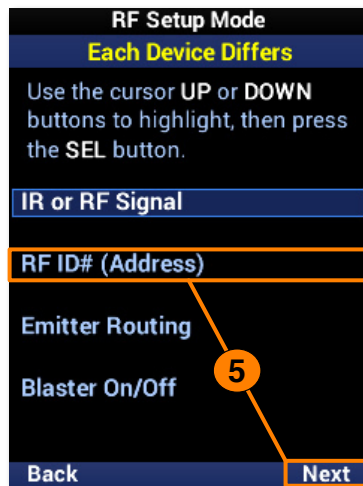
Each Device Differs

1. Highlight **Each Device Differs** and select **Next**.
2. Select a **device** from the list to configure. Use **Page+** to move between device pages.
3. Highlight **IR or RF Signal** and select **Next**.
 - A. **IR Signal is:** Use the LCD button to **enable** or **disable** IR.
 - B. **RF Signal is:** Use the LCD button to **enable** or **disable** RF.
4. Select **Save** to confirm any changes.



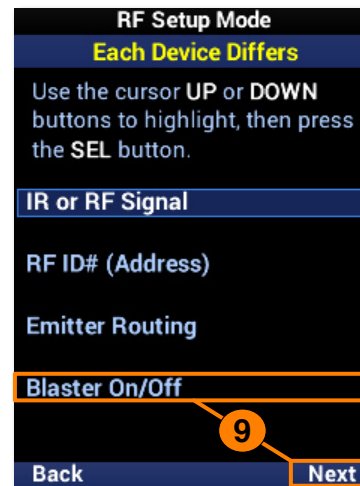
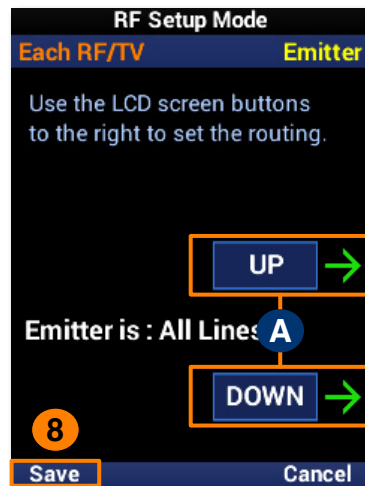
COMPLETE CONTROL

5. Highlight **ID# (Address)** and select **Next**.
 - A. **RF ID is:** Use the LCD buttons to set the **RF ID** number.
6. Select **Save** to confirm any changes.
7. Highlight **Emitter Routing** and select **Next**.
 - A. **Emitter is:** Use the LCD buttons to set the **emitter line** number.



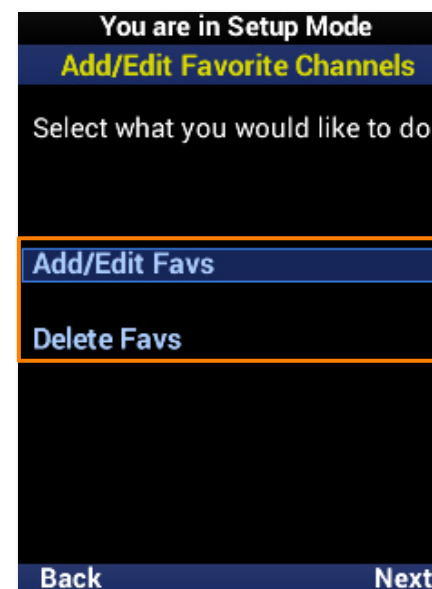
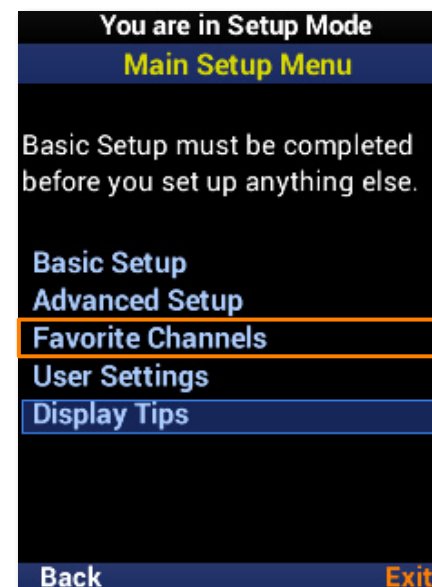
COMPLETE CONTROL

8. Select **Save** to confirm any changes.
9. Highlight **Blaster On/Off** and select **Next**.
 - A. Blaster is:** Use the LCD button to **enable** or **disable** the IR Blaster.
10. Select **Save** to confirm any changes.



Favorite Channels

Favorite channels provide a quick and easy means of reaching a viewer's preferred content. The favorites may be customized with **unique labels**, **logos**, and **macros**.

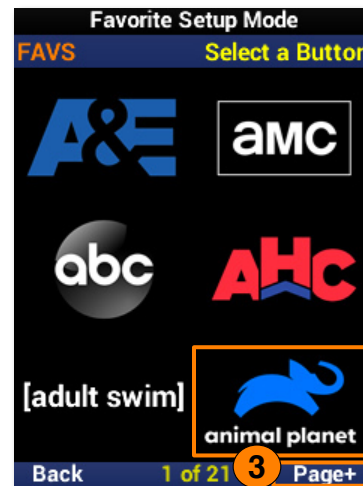
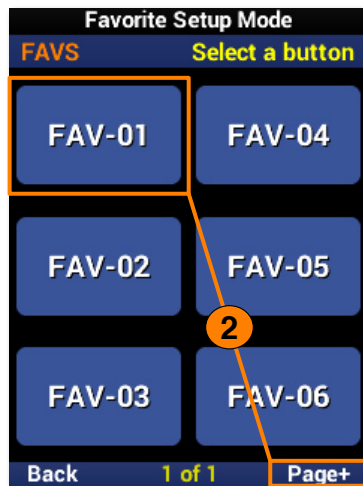
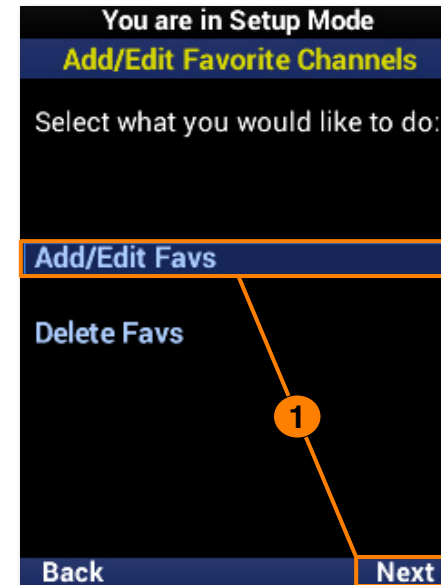


COMPLETE CONTROL

Add & Edit Favs

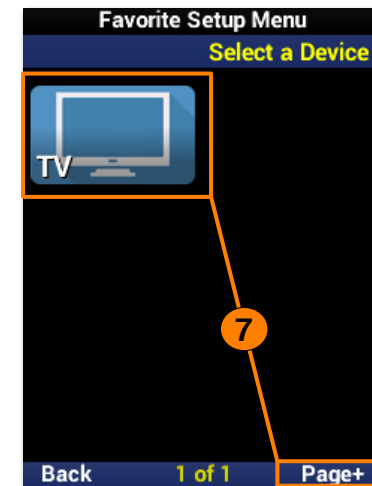
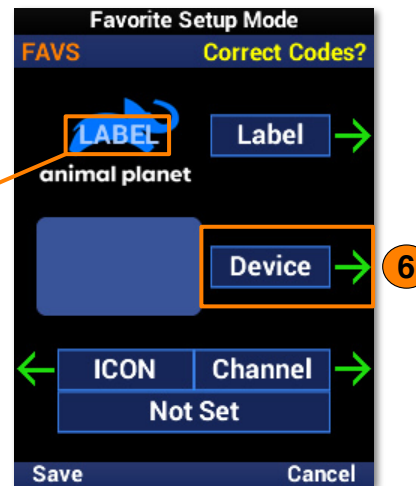
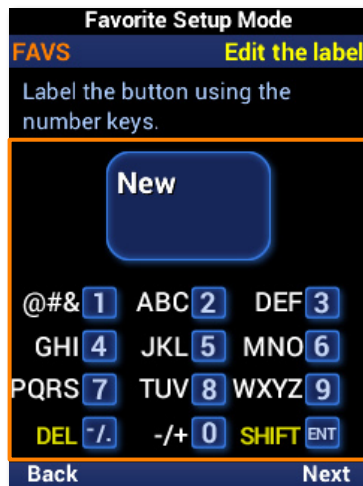
To add **new** favorite channels, or **edit** existing ones, perform the following:

1. Highlight **Add/Edit Favs** and select **Next**.
2. Select a **location** on the UI for the new favorite channel. Use the **Page+** option to add another six locations to the menu. When **editing**, select the favorite channel from the UI.
3. Browse the collection of channel logos using the navigation buttons and **Page+**. **Animal Planet** is used in this example.
4. Select **Label** to add a custom label to the button.

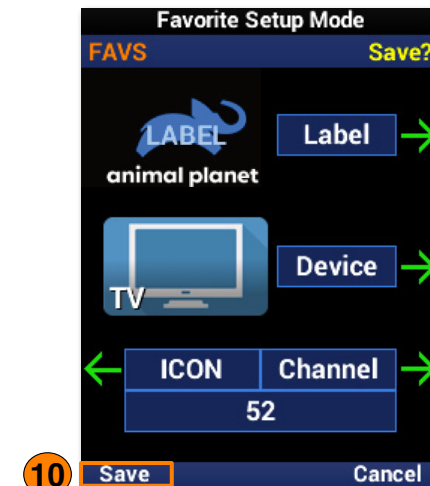
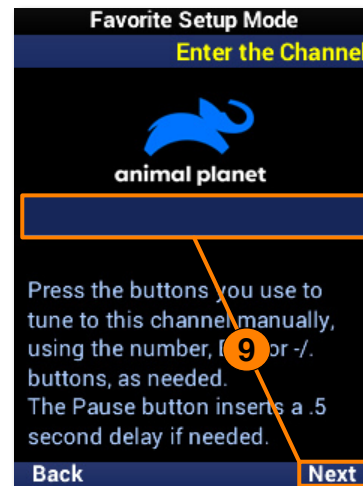
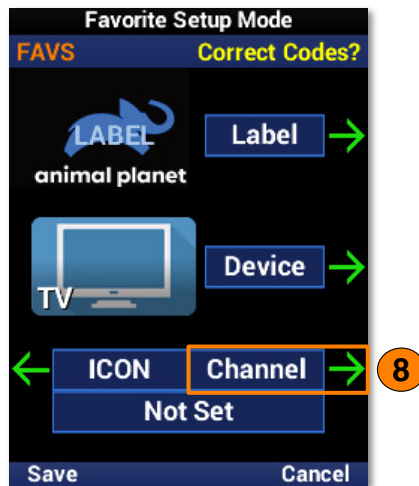


COMPLETE CONTROL

5. Using the number pad, enter a **label** for the favorite channel. Select **Next** when finished. "LABEL" is used in this example.
6. Select **Device**.
7. Select a **device** from the list to add the favorite channel to it. Use **Page+** to move between device pages. Animal Planet is being added to a **TV** in this example.



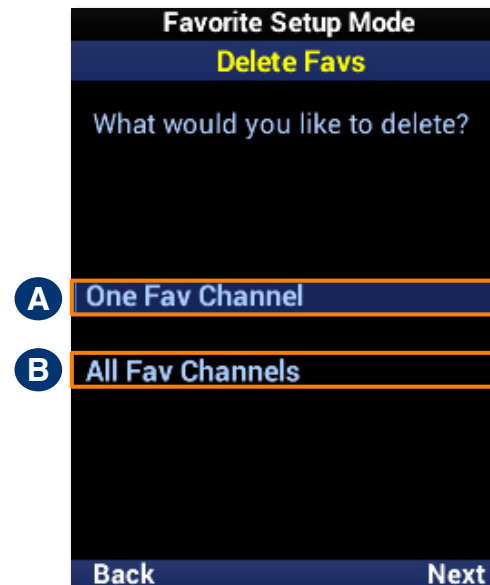
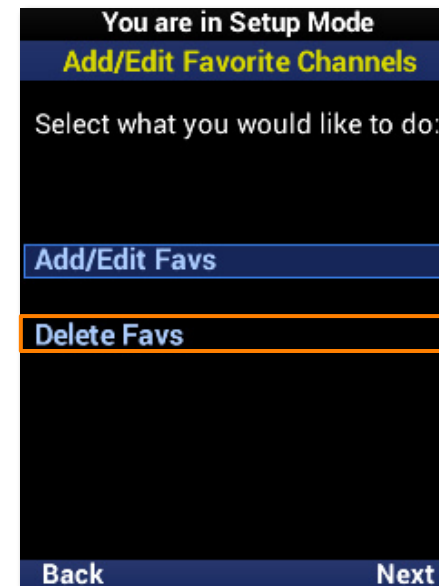
8. Select **Channel**.
9. Using the number pad, enter the **channel numbers** and select **Next**.
10. Select **Save** to finish creating the favorite channel.



Delete Favs

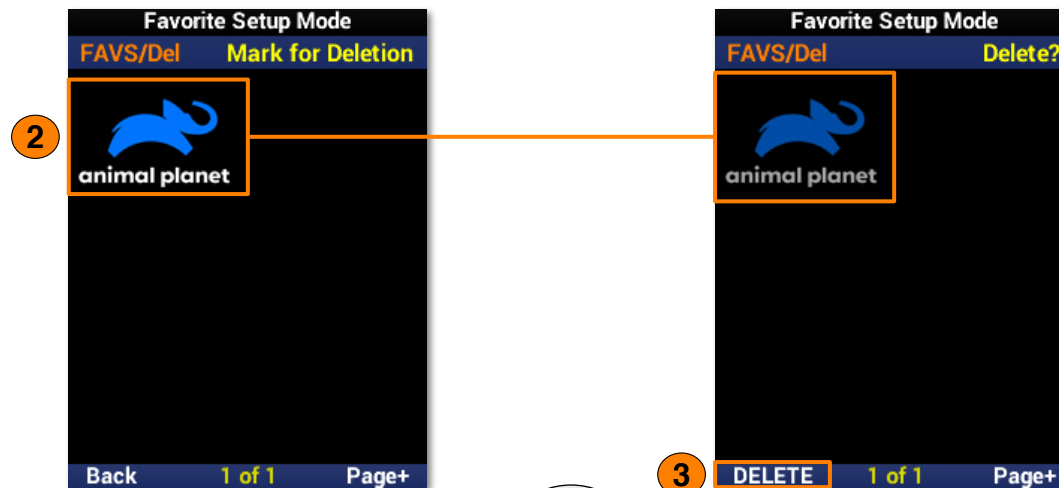
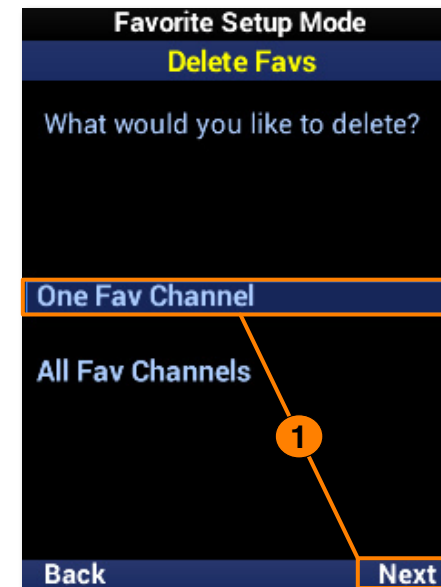
MX-490 favorite channels may be **removed** by specifically choosing individual channels or removing all of them at once.

- A. One Fav Channel:** Removes **specified** favorite channels..
- B. All Fav Channels:** Removes **all** favorite channels from the remote.



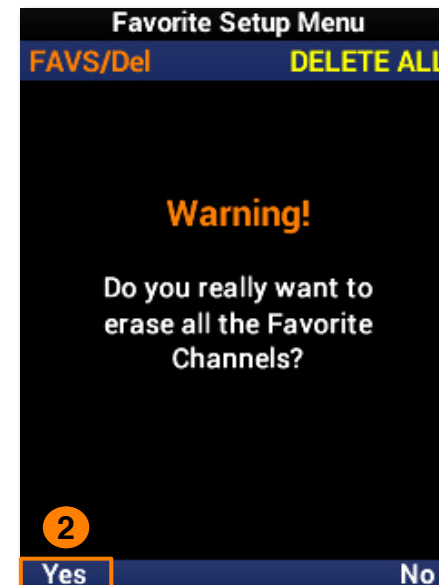
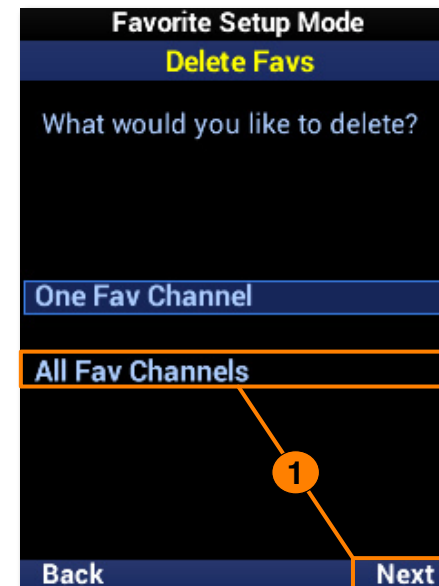
One Fav Channel

1. Highlight **One Fav Channel** and select **Next**.
2. Select **each favorite channel** to be removed. Once selected, a channel appears **slightly faded**.
3. Select **Delete** to remove the selected favorites.



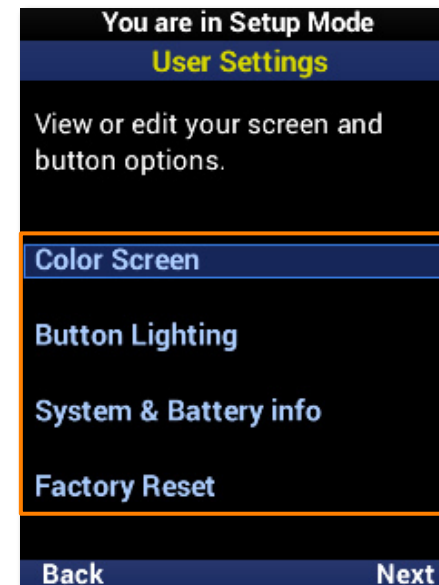
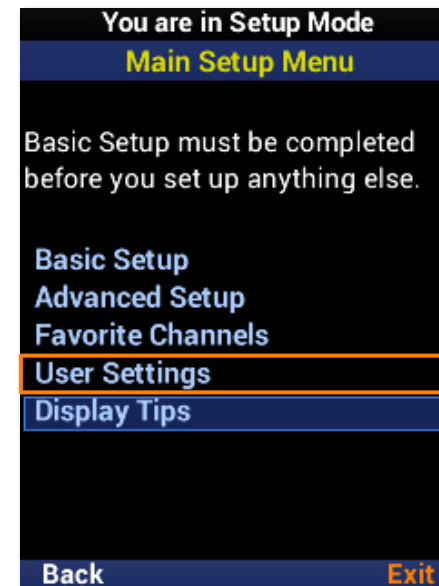
All Fav Channels

1. Highlight **All Fav Channels** and select **Next**.
2. Select **Yes** to confirm the removal of all favorite channels.



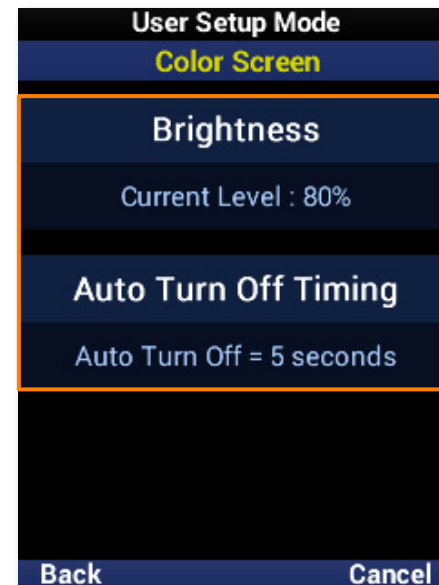
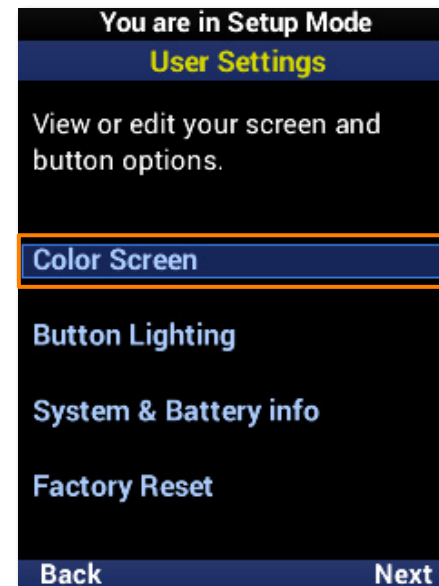
User Settings

This section of the **Setup Menu** allows for the customization of **screen and button lighting**, provides system information on **memory usage** and **firmware**, and allows for the remote to be **restored to factory conditions**.



Color Screen

Allows for simple **customization** of the MX-490 LCD screen.

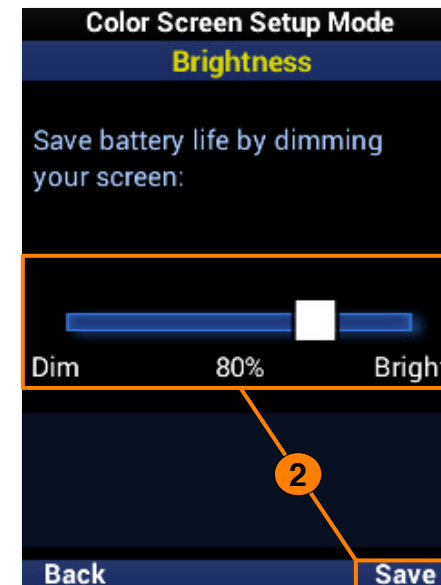
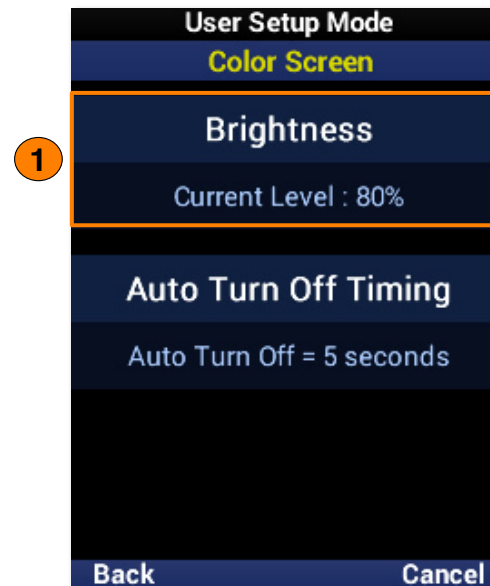


COMPLETE CONTROL

Brightness

Shows the **current** brightness level of the MX-490 screen.

1. Select this option to **customize** the brightness level of the screen.
2. Move the brightness slider with the **LCD buttons**. Select **Save** to confirm any changes.

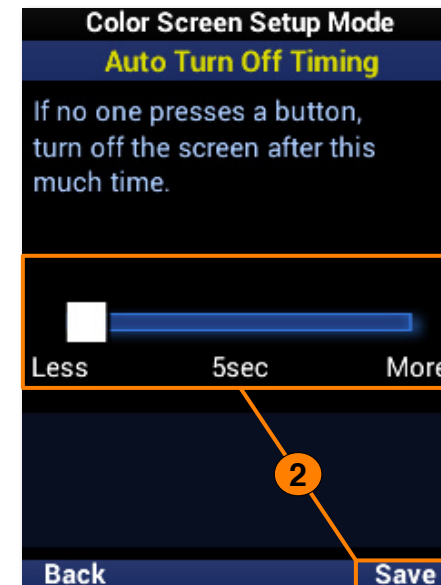
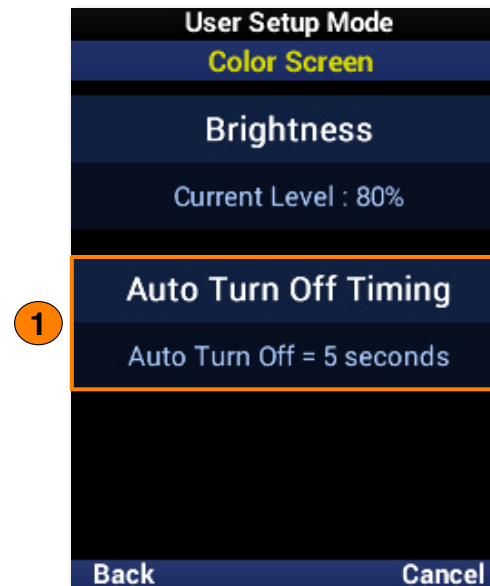


COMPLETE CONTROL

Auto Turn Off Timing

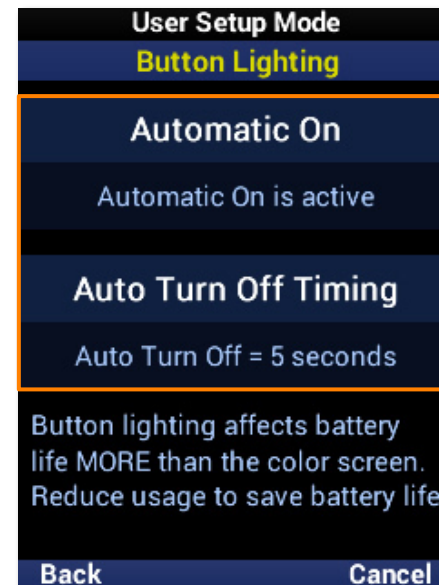
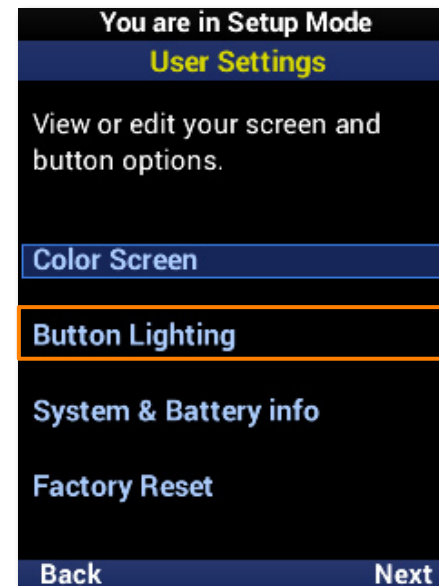
Shows the **screen timeout** in seconds, indicating how long the MX-490 waits before automatically turning off the screen.

1. Select this option to **customize** the screen timeout.
2. Move the timeout slider with the **LCD buttons**. Select **Save** to confirm any changes.



Button Lighting

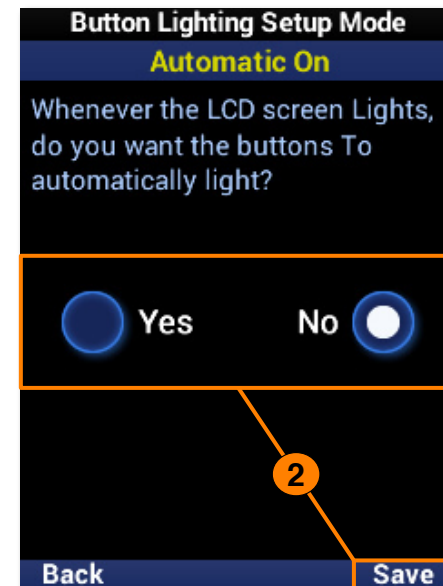
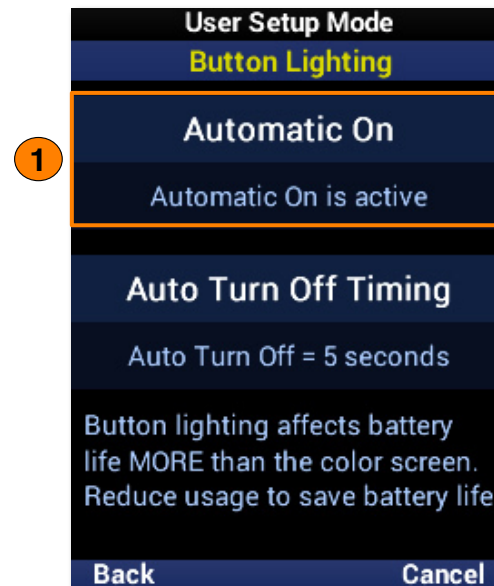
Allows for simple **customization** of the MX-490 hard buttons.



Automatic On

Shows the **current** status of button automatic lighting.

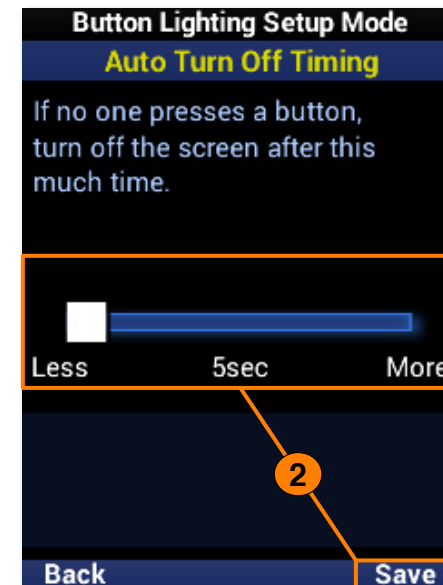
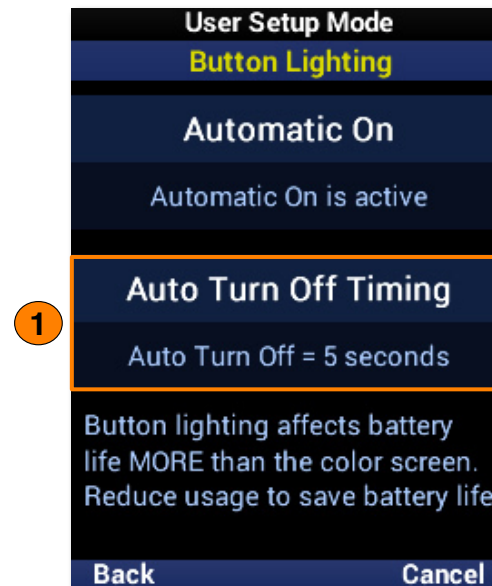
1. Select this option to change the automatic lighting setting.
2. Use the **left** and **right** navigation buttons to select **Yes** or **No**, which enables or disables the button automatic lighting feature.



Auto Turn Off Timing

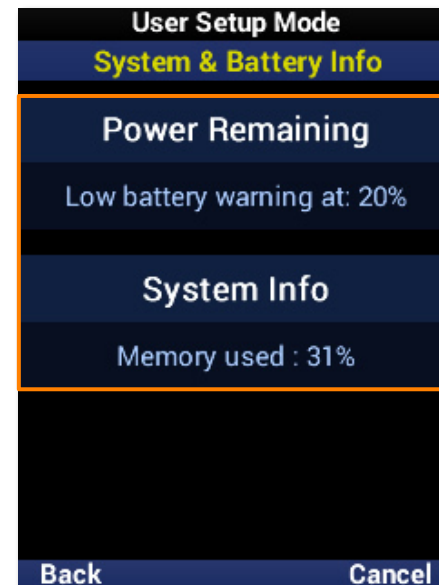
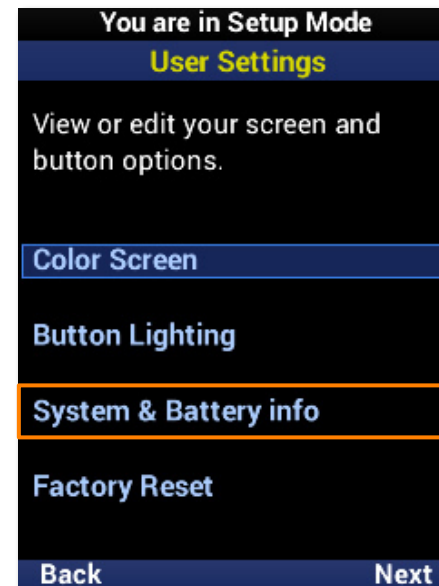
Shows the **button timeout** in seconds, indicating how long the MX-490 waits before automatically turning off the button backlighting.

1. Select this option to **customize** the button timeout.
2. Move the timeout slider with the **LCD buttons**. Select **Save** to confirm any changes.



System & Battery Info

Provides **current information** on the power level and used memory of the MX-490.

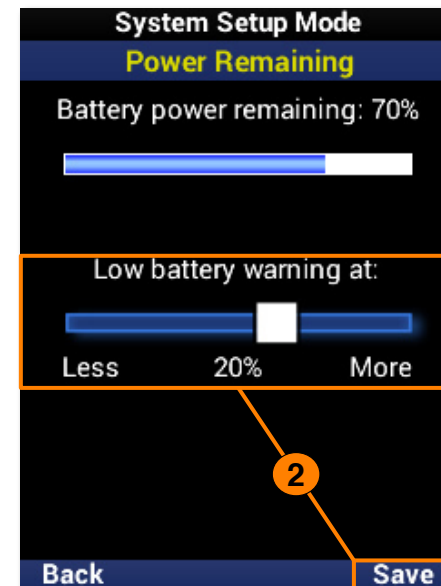
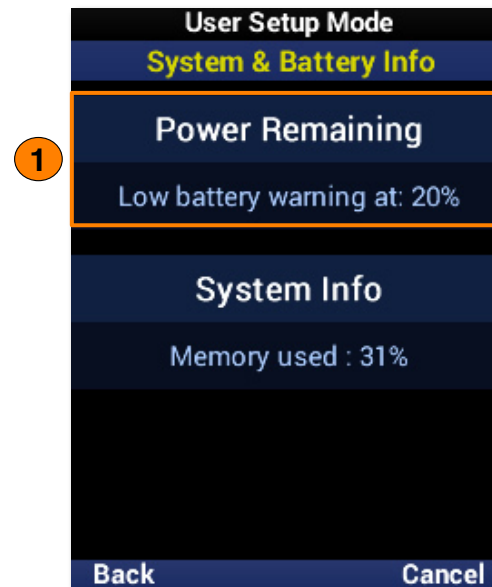


COMPLETE CONTROL

Power Remaining

Shows the percentage set for **low power warnings**.

1. Select this option to **customize** the low power warning and view the **current** battery percentage.
2. Move the warning slider with the **LCD buttons**. Select **Save** to confirm any changes.

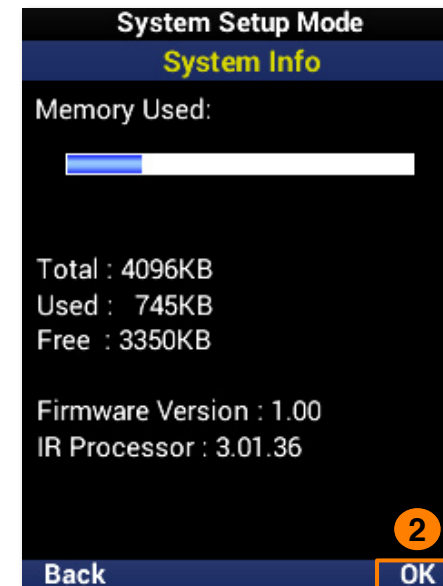
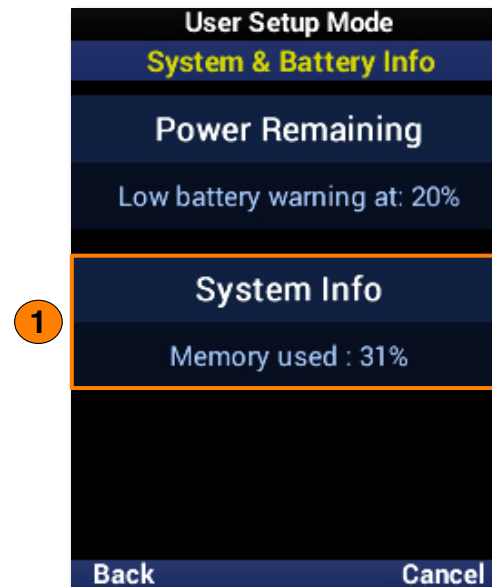


COMPLETE CONTROL

System Info

Shows the **current percentage** of used memory.

1. Select this option to view **further details** on the remote, including the **firmware version**.
2. Select **OK** to exit System Info.



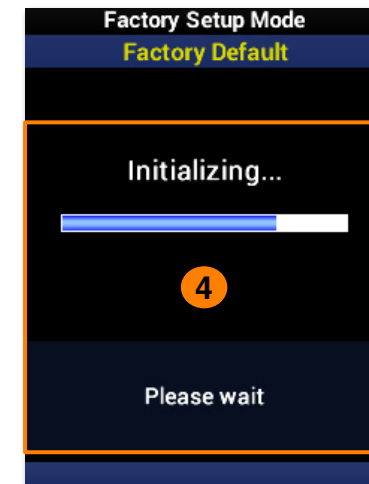
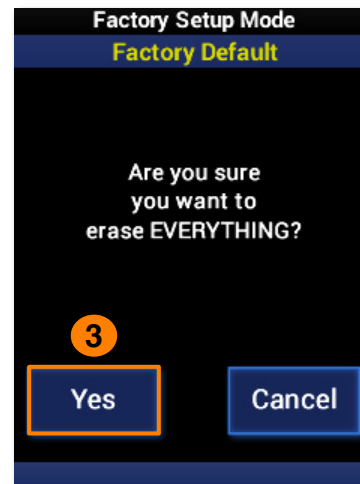
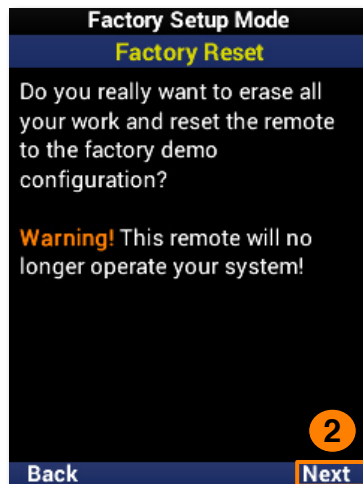
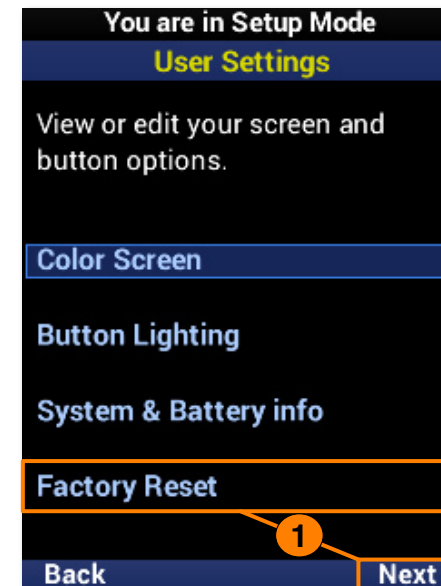
COMPLETE CONTROL

Factory Default

Only use this feature when **instructed** to do so by URC Technical Support. It **resets the memory** of the MX-490 to the factory default. All of your programming will be lost!

To **erase** your MX-490 program, perform the following:

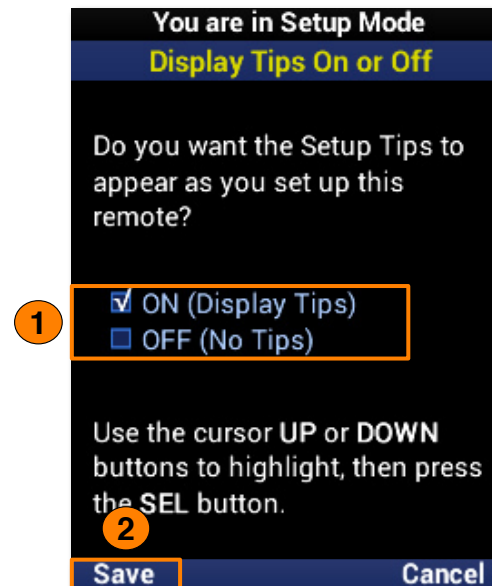
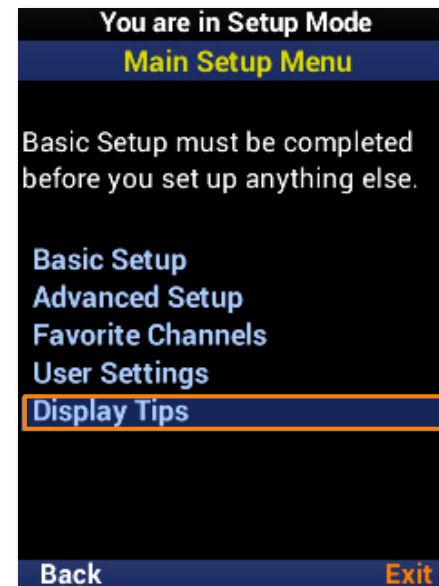
1. Highlight **Factory Reset** and select **Next**.
2. Select **Next** to confirm the reset.
3. Select **Yes** to once again confirm the reset.
4. Please wait as the remote is reset to factory settings. The process automatically returns to the **Main** screen.



Display Tips

Programming tips are displayed prior to entering the Setup Menu and during the configuration process. These tips may be disabled, but URC recommends first-time programmers take advantage of the extra help during setup.

1. Select an option:
 - **ON:** Programming tips are displayed during the configuration process.
 - **OFF:** Programming tips are no longer displayed.
2. Select **Save**.



COMPLETE CONTROL

Specifications

These are the technical specifications for the MX-490:

Microprocessor: ARM Cortex

Memory: External 64Mb

RAM: CPU Internal 48Kbytes

LCD: 240 x 320, 2" TFT LCD

IR Range (Line of Sight via Infrared): 30 to 50 feet, depending on the environment

RF Range (Radio Frequency): 50 to 100 feet, depending on the environment

Batteries: 4x AA Alkaline Batteries (DC 6V / 1.5V x 4EA)

Operating Temp: 0~40 °C

Size: 225 X 52 X 27.5 (mm)

Product Weight: 222g (with battery loaded)

Parts List

These are the parts included within the packaging:

- **MX-490 Remote Control**
- **4x AA Alkaline Batteries**

Limited Warranty Statement

<https://www.urc-automation.com/legal/warranty-statement/>

End User Agreement

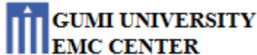
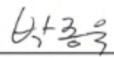
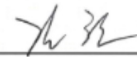
The terms and conditions of the End User Agreement available at <https://www.urc-automation.com/legal/end-user-agreement/> shall apply.

Federal Communication Commission Interference Statement

This equipment has been tested and found to comply with the limits for a Class B digital device, pursuant to part 15 of the FCC Rules. These limits are designed to provide reasonable protection against harmful interference in a residential installation. This equipment generates, uses and can radiate radio frequency energy and, if not installed and used in accordance with the instructions, may cause harmful interference to radio communications. However, there is no guarantee that interference will not occur in a particular installation. If this equipment does cause harmful interference to radio or television reception, which can be determined by turning the equipment off and on, the user is encouraged to try to correct the interference by one more of the following measures:

- Reorient or relocate the receiving antenna.
- Increase the separation between the equipment and receiver.
- Connect the equipment into an outlet on a circuit different from that to which the receiver is connected.
- Consult the dealer or an experienced radio/TV technician for help.

COMPLETE CONTROL

		Page 1 of 15
<p>EVALUATION REPORT <i>for Certification</i></p>		
Manufacturer: Summit Technology 130, Digital-ro, Namsung Plaza suite 611, Geumcheon-gu, Seoul, South Korea Attn: Mr. Yong-seong Park / Senior Director	Date of Issue: Jan. 14, 2022 Order Number: GETEC-C1-22-003 Test Report Number: GETEC-E3-22-007 Test Site: GUMI UNIVERSITY EMC CENTER CAB Designation Number: KR0033	
<p>RESPONSIBLE PARTY : Summit Technology ADDRESS : 130, Digital-ro, Namsung Plaza suite 611, Geumcheon-gu, Seoul, South Korea CONTACT PERSON : Mr. Yong-seong Park / Senior Director</p>		
Rule Part(s) Test Method Equipment Class EUT Type Type of Authority Model Name	: FCC Part 15 Subpart C-Intentional Radiator § 15.231 : ANSI C63.10 (2013) : Part 15 Remote Control/Security Device Transceiver(DSR) : RF Remote controller : Certification : MX-490	
<p>This equipment has been shown to be in compliance with the applicable technical standards as indicated in the measurement report and was tested in accordance with the measurement procedures specified in ANSI C63.10 (2013)</p> <p>I attest to the accuracy of data. All measurements reported herein were performed by me or were made under my supervision and are correct to the best of my knowledge and belief. I assume full responsibility for the completeness of these measurements and vouch for the qualifications of all persons taking them.</p>		
Tested by,  _____ Jong-Wook Park / Senior Engineer GUMI UNIVERSITY EMC CENTER	Reviewed by,  _____ Hyun Kim / Technical Manager GUMI UNIVERSITY EMC CENTER	
GETEC-QP-16-008 (Rev.01)		EMC CENTER
<p><small>This test report only contains the result of a specific sample supplied by applicant for the testing. It is not allowed to copy this report even partly without the approval of EMC center</small></p>		

Warning!

The manufacturer is not responsible for any Radio or TV interference caused by unauthorized modifications to this equipment.

Changes or modifications not expressly approved by the manufacturer could void the user's authority to operate the equipment.