

Series 5

Die Cast Aluminum Conduit Outlet Bodies, Covers & Gaskets

Series 5 die cast copper-free aluminum conduit bodies, covers and gaskets are available for use with rigid or EMT conduit (with set screw). Conduit bodies are available in trade sizes 1/2" to 4", in the most popular conduit body shapes (C, LB, LL, LR, T) and 1/2" to 2" in TB and X shapes. The Series 5 family is available as components or pre-packaged in various configurations as a SnapPack™ assembly. In addition, Series 5 is completely interchangeable with other manufacturers.

Applications:

- Act as pull outlets for conductors being installed
- Provide openings for making splices and taps in conductors
- Act as mounting outlets for lighting fixtures and wiring devices
- Connect conduit sections
- Provide taps for branch conduit runs
- Make 90° bends in conduit runs
- Provide for access to conductors for maintenance and future system changes

Features:

- Die cast copper-free aluminum construction is lightweight and corrosion-resistant for long, reliable service
- Epoxy powder coat finish provides additional corrosion resistance and an aesthetically-pleasing appearance
- Conduit bodies are supplied with threaded hubs for use with rigid/IMC conduit or as a combination body
- Combination bodies are supplied with tri-head set screws (slotted, Phillips, Robertson) for use with EMT or rigid/IMC conduit on trade sizes 1/2" to 2"
- Domed aluminum cover provides additional cubic capacity
- Perforated center gasket that can be easily removed, if desired
- SnapPack™ available in choice of three configurations to match customer preferences

Certifications and Compliances:

- UL Listed
- cUL Listed
- UL File No. E-15022
- Suitable for wet locations (1/2" to 2" rigid bodies)
- Suitable for NEMA 4 (1/2" to 1" rigid bodies with integral gasket cover)

Standard Materials and Finishes:

- Bodies – copper-free aluminum with epoxy powder paint
- Covers – aluminum with stainless steel screws, natural
- Gaskets – neoprene, natural



Series 5

Integral gasket covers. The sheet aluminum covers feature a raised dome with stainless steel screws supplied with nylon washers and a gasket for simplifying installation—reducing inventory and labor costs. These innovative covers are UL and cUL Listed and are NEMA 4 rated 1/2" to 1" trade sizes with rigid bodies.



SnapPack™. Designed for ordering and receiving convenience, the SnapPack combines a body, gasket and sheet aluminum cover in a single assembly.

1 Rigid body with traditional cover and gasket (e.g. LB15 CGN)



2 Combination body with traditional cover and gasket (e.g. LB15 MTC)

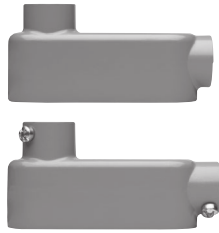


3 **NEMA 4** rigid body with integral gasketed cover (e.g. X15 ICG)



Series 5

Die Cast Aluminum Conduit Outlet Bodies, Covers & Gaskets



Series 5

TYPE LB

Outlet Body			SnapPack			Internal Vol. in Cu. In.	Unit Qty.	Wt. Lbs. Per 100*	Max. No. of Conductors
Size	Cat. # Rigid/IMC	Cat. # Combo EMT, Rigid/IMC	Cat. # Rigid/IMC Body, Traditional Cover & Gasket	Cat. # Combo EMT, Body, Traditional Cover & Gasket	Cat. # NEMA 4 Rigid/IMC Body, Integral Cover & Gasket				
1/2"	LB15	LB15 MT	LB15 CGN	LB15 MTC	LB15 ICG (4.5 Cu. In.)	4.35	10	26	-
3/4"	LB25	LB25 MT	LB25 CGN	LB25 MTC	LB25 ICG (7.5 Cu. In.)	7.30	10	48	#6 AWG
1"	LB35	LB35 MT	LB35 CGN	LB35 MTC	LB35 ICG (10.8 Cu. In.)	12.20	5	64	3 #4 AWG
1 1/4"	LB45	LB45 MT	LB45 CGN	LB45 MTC	-	32.30	2	140	3 #2 AWG
1 1/2"	LB55	LB55 MT	LB55 CGN	LB55 MTC	-	33.80	2	160	3 #1/0 AWG
2"	LB65	LB65 MT	LB65 CGN	LB65 MTC	-	71.20	1	260	3 #3/0 AWG
2 1/2"	LB75	LB75 MT†	LB75 CGN	LB75 MTC	-	71.20	1	500	3 #300MCM
3"	LB85	LB85 MT†	LB85 CGN	LB85 MTC	-	183.50	1	600	3 #300MCM
3 1/2"	LB95	LB95 MT†	LB95 CGN	LB95 MTC	-	304.90	1	900	3 #400MCM
4"	LB105	LB105 MT†	LB105 CGN	LB105 MTC	-	308.00	1	1000	3 #400MCM

*Weight lbs. per 100 is listed for outlet body only.

†Combo EMT, rigid/IMC fittings greater than 2" trade size are SET SCREW ONLY (not combination threaded and set screw).



TYPE LR

Outlet Body			SnapPack			Internal Vol. in Cu. In.	Unit Qty.	Wt. Lbs. Per 100*	Max. No. of Conductors
Size	Cat. # Rigid/IMC	Cat. # Combo EMT, Rigid/IMC	Cat. # Rigid/IMC Body, Traditional Cover & Gasket	Cat. # Combo EMT, Body, Traditional Cover & Gasket	Cat. # NEMA 4 Rigid/IMC Body, Integral Cover & Gasket				
1/2"	LR15	LR15 MT	LR15 CGN	LR15 MTC	LR15 ICG (4.5 Cu. In.)	4.35	10	26	-
3/4"	LR25	LR25 MT	LR25 CGN	LR25 MTC	LR25 ICG (7.5 Cu. In.)	7.30	10	48	#6 AWG
1"	LR35	LR35 MT	LR35 CGN	LR35 MTC	LR35 ICG (10.8 Cu. In.)	12.20	5	64	3 #4 AWG
1 1/4"	LR45	LR45 MT	LR45 CGN	LR45 MTC	-	35.80	2	140	3 #2 AWG
1 1/2"	LR55	LR55 MT	LR55 CGN	LR55 MTC	-	35.80	2	160	3 #1/0 AWG
2"	LR65	LR65 MT	LR65 CGN	LR65 MTC	-	69.70	1	260	3 #3/0 AWG
2 1/2"	LR75	-	LR75 CGN	-	-	69.70	1	500	3 #300MCM
3"	LR85	-	LR85 CGN	-	-	186.00	1	600	3 #350MCM
3 1/2"	LR95	-	LR95 CGN	-	-	306.00	1	900	3 #350MCM
4"	LR105	-	LR105 CGN	-	-	308.00	1	1000	3 #350MCM

*Weight lbs. per 100 is listed for outlet body only.

Series 5

Die Cast Aluminum Conduit Outlet Bodies, Covers & Gaskets



TYPE LL

Size	Outlet Body		SnapPack			Internal Vol. in Cu. In.	Unit Qty.	Wt. Lbs. Per 100*	Max. No. of Conductors
	Cat. # Rigid/IMC	Cat. # Combo EMT, Rigid/IMC	Cat. # Rigid/IMC Body, Traditional Cover & Gasket	Cat. # Combo EMT, Body, Traditional Cover & Gasket	Cat. # NEMA 4 Rigid/IMC Body, Integral Cover & Gasket				
1/2"	LL15	LL15 MT	LL15 CGN	LL15 MTC	LL15 ICG (4.5 Cu. In.)	4.35	10	30	-
3/4"	LL25	LL25 MT	LL25 CGN	LL25 MTC	LL25 ICG (7.5 Cu. In.)	7.30	10	48	#6 AWG
1"	LL35	LL35 MT	LL35 CGN	LL35 MTC	LL35 ICG (10.8 Cu. In.)	12.20	5	64	3 #4 AWG
1 1/4"	LL45	LL45 MT	LL45 CGN	LL45 MTC	-	35.80	2	140	3 #2 AWG
1 1/2"	LL55	LL55 MT	LL55 CGN	LL55 MTC	-	35.80	2	160	3 #1/0 AWG
2"	LL65	LL65 MT	LL65 CGN	LL65 MTC	-	69.70	1	270	3 #3/0 AWG
2 1/2"	LL75	-	LL75 CGN	-	-	69.70	1	500	3 #300MCM
3"	LL85	-	LL85 CGN	-	-	186.00	1	600	3 #350MCM
3 1/2"	LL95	-	LL95 CGN	-	-	306.00	1	900	3 #350MCM
4"	LL105	-	LL105 CGN	-	-	308.00	1	1000	3 #350MCM

*Weight lbs. per 100 is listed for outlet body only.



TYPE C

Size	Outlet Body		SnapPack			Internal Vol. in Cu. In.	Unit Qty.	Wt. Lbs. Per 100*	Max. No. of Conductors
	Cat. # Rigid/IMC	Cat. # Combo EMT, Rigid/IMC	Cat. # Rigid/IMC Body, Traditional Cover & Gasket	Cat. # Combo EMT, Body, Traditional Cover & Gasket	Cat. # NEMA 4 Rigid/IMC Body, Integral Cover & Gasket				
1/2"	C15	C15 MT	C15 CGN	C15 MTC	C15 ICG (4.5 Cu. In.)	4.35	10	27	-
3/4"	C25	C25 MT	C25 CGN	C25 MTC	C25 ICG (7.5 Cu. In.)	7.30	10	40	#6 AWG
1"	C35	C35 MT	C35 CGN	C35 MTC	C35 ICG (10.8 Cu. In.)	12.20	5	64	3 #4 AWG
1 1/4"	C45	C45 MT	C45 CGN	C45 MTC	-	32.30	2	165	3 #2 AWG
1 1/2"	C55	C55 MT	C55 CGN	C55 MTC	-	33.80	2	150	3 #1/0 AWG
2"	C65	C65 MT	C65 CGN	C65 MTC	-	69.50	1	270	3 #2/0 AWG
2 1/2"	C75	-	C75 CGN	-	-	69.50	1	500	3 #250MCM
3"	C85	-	C85 CGN	-	-	188.00	1	600	3 #250MCM
3 1/2"	C95	-	C95 CGN	-	-	307.00	1	900	3 #300MCM
4"	C105	-	C105 CGN	-	-	309.00	1	1000	3 #300MCM

*Weight lbs. per 100 is listed for outlet body only.

Series 5

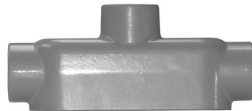
Die Cast Aluminum Conduit Outlet Bodies, Covers & Gaskets



TYPE T

Size	Outlet Body		SnapPack			Internal Vol. in Cu. In.	Unit Qty.	Wt. Lbs. Per 100*	Max. No. of Conductors
	Cat. # Rigid/IMC	Cat. # Combo EMT, Rigid/IMC	Cat. # Rigid/IMC Body, Traditional Cover & Gasket	Cat. # Combo EMT, Body, Traditional Cover & Gasket	Cat. # NEMA 4 Rigid/IMC Body, Integral Cover & Gasket				
1/2"	T15	T15 MT	T15 CGN	T15 MTC	T15 ICG (4.5 Cu. In.)	4.35	10	27	-
3/4"	T25	T25 MT	T25 CGN	T25 MTC	T25 ICG (7.5 Cu. In.)	7.30	10	40	#6 AWG
1"	T35	T35 MT	T35 CGN	T35 MTC	T35 ICG (10.8 Cu. In.)	12.20	5	64	3 #4 AWG
1 1/4"	T45	T45 MT	T45 CGN	T45 MTC	-	33.10	2	165	3 #2 AWG
1 1/2"	T55	T55 MT	T55 CGN	T55 MTC	-	33.10	2	150	3 #2 AWG
2"	T65	T65 MT	T65 CGN	T65 MTC	-	67.00	1	270	3 #1 AWG
2 1/2"	T75	-	T75 CGN	-	-	67.00	1	500	3 #3/0 AWG
3"	T85	-	T85 CGN	-	-	175.00	1	600	3 #3/0 AWG
3 1/2"	T95	-	T95 CGN	-	-	298.00	1	900	3 #4/0 AWG
4"	T105	-	T105 CGN	-	-	300.00	1	1000	3 #4/0 AWG

*Weight lbs. per 100 is listed for outlet body only.



TYPE TB

Size	Outlet Body		SnapPack			Internal Vol. in Cu. In.	Unit Qty.	Wt. Lbs. Per 100*	Max. No. of Conductors
	Cat. # Rigid/IMC	Cat. # Combo EMT, Rigid/IMC	Cat. # Rigid/IMC Body, Traditional Cover & Gasket	Cat. # Combo EMT, Body, Traditional Cover & Gasket	Cat. # NEMA 4 Rigid/IMC Body, Integral Cover & Gasket				
1/2"	TB15	-	-	-	TB15 ICG (4.5 Cu. In.)	4.50	10	29	-
3/4"	TB25	-	-	-	TB25 ICG (7.5 Cu. In.)	7.50	10	42	3 #6 AWG
1"	TB35	-	-	-	TB35 ICG (10.8 Cu. In.)	10.80	5	58	3 #4 AWG
1 1/4"	TB45	-	-	-	-	32.30	2	110	3 #2 AWG
1 1/2"	TB55	-	-	-	-	34.20	2	109	3 #2 AWG
2"	TB65	-	-	-	-	71.40	1	192	3 #2/0 AWG

*Weight lbs. per 100 is listed for outlet body only.



TYPE X

Size	Outlet Body		SnapPack			Internal Vol. in Cu. In.	Unit Qty.	Wt. Lbs. Per 100*	Max. No. of Conductors
	Cat. # Rigid/IMC	Cat. # Combo EMT, Rigid/IMC	Cat. # Rigid/IMC Body, Traditional Cover & Gasket	Cat. # Combo EMT, Body, Traditional Cover & Gasket	Cat. # NEMA 4 Rigid/IMC Body, Integral Cover & Gasket				
1/2"	X15	-	-	-	X15 ICG (4.5 Cu. In.)	4.50	10	31	-
3/4"	X25	-	-	-	X25 ICG (7.5 Cu. In.)	7.50	10	47	3 #6 AWG
1"	X35	-	-	-	X35 ICG (10.8 Cu. In.)	10.80	5	62	3 #4 AWG
1 1/4"	X45	-	-	-	-	32.30	2	118	3 #2 AWG
1 1/2"	X55	-	-	-	-	34.20	2	118	3 #2 AWG
2"	X65	-	-	-	-	71.40	1	213	3 #2/0 AWG

*Weight lbs. per 100 is listed for outlet body only.

Series 5

Die Cast Aluminum Conduit Outlet Bodies, Covers & Gaskets

INTEGRAL GASKET COVERS

Aluminum Cover with Neoprene Integral Gasket



Size	Cat. #	Unit Qty.	Wt. Lbs. Per 100
1/2"	150G	50	6
3/4"	250G	50	7
1"	350G	50	8
1 1/4" - 1 1/2"	450G	50	17
2"	650G	25	26
2 1/2" - 3"	850G	10	80
3 1/2" - 4"	950G	10	145

1/2" - 3" are NEMA 4 rated.

ALUMINUM COVERS

Aluminum



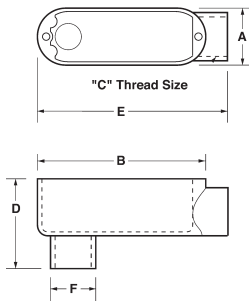
Size	Cat. #	Unit Qty.	Wt. Lbs. Per 100
1/2"	150	50	5
3/4"	250	50	6
1"	350	50	7
1 1/4" - 1 1/2"	450	50	15
2"	650	25	24
2 1/2" - 3"	850D	10	78
3 1/2" - 4"	950D	10	140

GASKETS

Neoprene

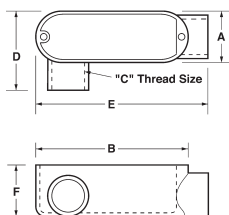


Size	Cat. #	Unit Qty.	Wt. Lbs. Per 100
1/2"	GASK015N	50	2
3/4"	GASK025N	50	2
1"	GASK035N	50	3
1 1/4" - 1 1/2"	GASK045N	50	6
2"	GASK065N	25	10
2 1/2" - 3"	GASK085N	10	20
3 1/2" - 4"	GASK095N	10	30



Type LB Dimensions (in Inches) – Threaded & Set Screw:

Size	A	B	C	D	E	F
1/2"	1.31	3.87	0.50	2.11	4.24	1.07
3/4"	1.53	4.67	0.75	2.38	4.97	1.28
1"	1.74	5.37	1.00	2.74	5.79	1.56
1 1/4"	2.49	7.23	1.25	3.50	7.79	1.99
1 1/2"	2.49	7.23	1.50	3.65	7.81	2.27
2"	3.10	9.46	2.00	4.24	10.20	2.91
2 1/2"	4.44	12.22	2.50	5.75	13.14	3.43
3"	4.44	12.22	3.00	6.41	13.14	4.13
3 1/2"	5.42	14.83	3.50	7.11	15.46	4.65
4"	5.42	14.83	4.00	7.20	15.46	5.16



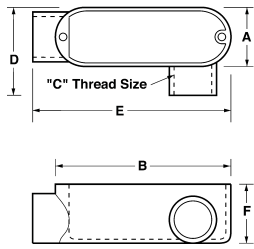
Type LR Dimensions (in Inches) – Threaded & Set Screw:

Size	A	B	C	D	E	F
1/2"	1.31	3.87	0.50	2.06	4.40	1.40
3/4"	1.53	4.67	0.75	2.28	5.07	1.64
1"	1.74	5.37	1.00	2.51	5.94	1.90
1 1/4"	2.49	7.23	1.25	3.50	7.87	2.85
1 1/2"	2.49	7.23	1.50	3.50	7.87	2.85
2"	3.10	9.46	2.00	3.83	9.88	3.41
2 1/2"	4.50	12.22	2.50	6.00	13.14	4.00
3"	4.65	12.22	3.00	6.10	13.00	4.70
3 1/2"	5.42	14.83	3.50	6.40	15.45	5.43
4"	5.42	14.83	4.00	6.40	15.45	5.43

Series 5

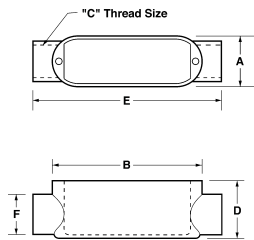
Die Cast Aluminum Conduit Outlet Bodies, Covers & Gaskets

Series 5



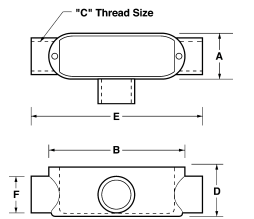
Type LL Dimensions (in Inches) – Threaded & Set Screw:

Size	A	B	C	D	E	F
1/2"	1.31	3.87	0.50	2.06	4.40	1.40
3/4"	1.53	4.67	0.75	2.28	5.07	1.64
1"	1.74	5.37	1.00	2.68	5.94	1.90
1 1/4"	2.49	7.23	1.25	3.50	7.87	2.85
1 1/2"	2.49	7.23	1.50	3.50	7.87	2.85
2"	3.10	9.46	2.00	3.83	10.20	3.41
2 1/2"	4.50	12.22	2.50	6.00	13.14	4.00
3"	4.65	12.22	3.00	6.10	13.00	4.70
3 1/2"	5.42	14.83	3.50	6.05	15.35	5.43
4"	5.42	14.83	4.00	6.05	15.35	5.43



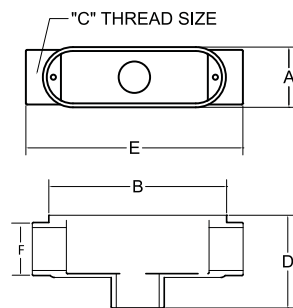
Type C Dimensions (in Inches) – Threaded & Set Screw:

Size	A	B	C	D	E	F
1/2"	1.31	3.87	0.50	1.40	4.82	1.07
3/4"	1.53	4.67	0.75	1.64	5.50	1.35
1"	1.74	5.37	1.00	1.90	6.44	1.67
1 1/4"	2.49	7.23	1.25	2.73	8.45	2.27
1 1/2"	2.49	7.23	1.50	2.73	8.45	2.27
2"	3.10	9.46	2.00	3.41	10.71	2.91
2 1/2"	4.50	12.22	2.50	4.30	14.00	3.50
3"	4.65	12.22	3.00	4.66	13.80	4.13
3 1/2"	5.42	14.83	3.50	5.36	16.10	5.30
4"	5.42	14.83	4.00	5.36	16.10	5.30



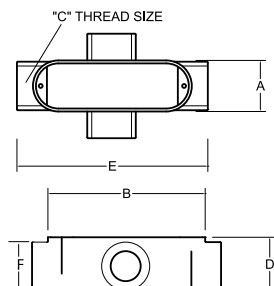
Type T Dimensions (in Inches) – Threaded & Set Screw:

Size	A	B	C	D	E	F
1/2"	1.31	3.87	0.50	1.40	4.82	1.07
3/4"	1.53	4.67	0.75	1.64	5.40	1.35
1"	1.74	5.37	1.00	1.90	6.33	1.15
1 1/4"	2.49	7.23	1.25	2.73	8.45	2.27
1 1/2"	2.49	7.23	1.50	2.73	8.45	2.27
2"	3.10	9.46	2.00	3.41	10.71	2.91
2 1/2"	4.50	12.22	2.50	4.00	14.00	3.50
3"	4.65	12.22	3.00	4.66	13.80	4.13
3 1/2"	5.42	14.83	3.50	5.40	16.00	5.30
4"	5.42	14.83	4.00	5.40	16.00	5.30



Type TB Dimensions (in Inches) – Threaded & Set Screw:

Size	A	B	C	D	E	F
1/2"	1.31	3.92	0.50	2.10	4.72	1.07
3/4"	1.53	4.64	0.75	2.40	5.51	1.28
1"	1.74	5.38	1.00	2.77	6.47	1.56
1 1/4"	2.49	7.24	1.25	3.53	8.25	1.99
1 1/2"	2.49	7.24	1.50	3.53	8.25	2.27
2"	3.10	9.50	2.00	4.50	10.50	2.91



Type X Dimensions (in Inches) – Threaded & Set Screw:

Size	A	B	C	D	E	F
1/2"	1.31	3.92	0.50	1.37	4.72	1.07
3/4"	1.53	4.64	0.75	1.63	5.51	1.28
1"	1.74	5.38	1.00	1.88	6.47	1.56
1 1/4"	2.49	7.24	1.25	2.51	8.25	1.99
1 1/2"	2.49	7.24	1.50	2.50	8.25	2.27
2"	3.10	9.50	2.00	3.40	10.50	2.91