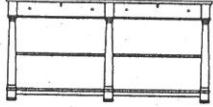







HEKMAN®

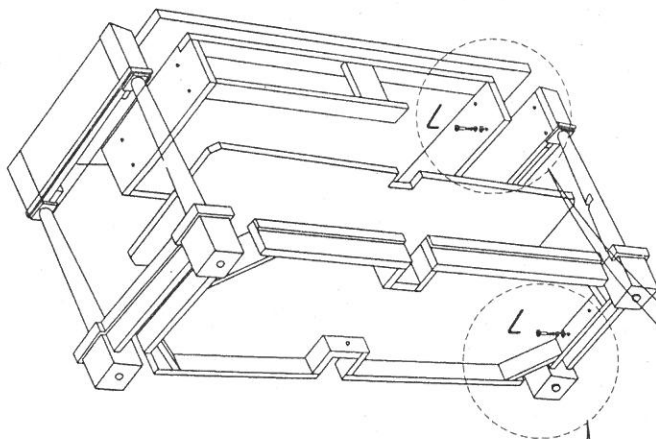
X A HOWARD MILLER COMPANY

23529 SERVER

Hardware List

A	B	C	D	E	
ALLEN BOLT M6 X 50 (14 PCS.)	FLAT W. M6 14 PCS	SPRING W. M6 14 PCS	SCREW 08 X 1 1/2" (4 PCS.)	ALLEN KEY M4 (FOR ALLEN BOLT) 1 PC.	
					

Assembly Instruction

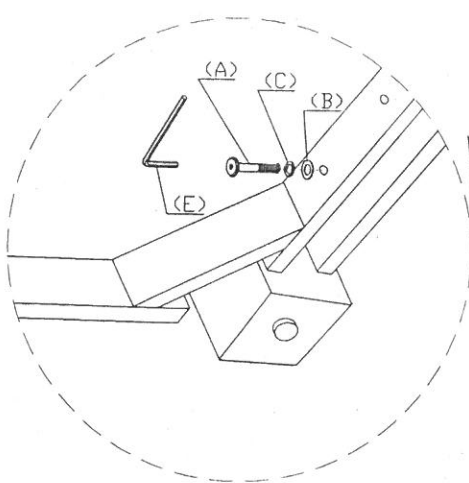


STEP 1.

LAY TOP PANEL UPSIDE DOWN ON A SOFT, CLEAN AND FLAT SURFACE. REMOVE DRAWERS.

STEP 2.

ATTACH ONE END ASSEMBLY WITH (4) ALLEN BOLT "A", (4) SPRING WASHER "C" AND (4) FLAT WASHER "B" WITH ALLEN KEY "E".

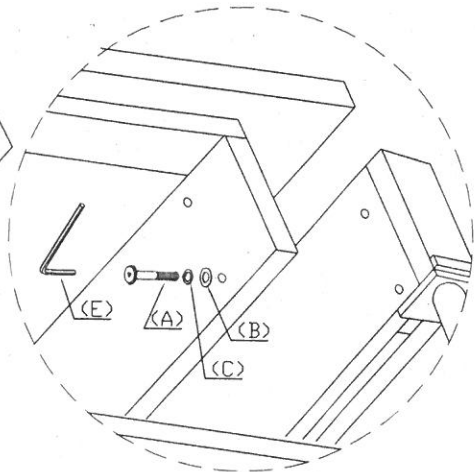


STEP 3.

TIP THE END ASSEMBLY + TOP ASSEMBLY SO THEY ARE LAYING ON THERE BACK.

STEP 4.

PLACE THE MIDDLE SHELF AND BASE ASSEMBLY IN POSITION WITH THE END ASSEMBLY + TOP ASSEMBLY.



STEP 5.

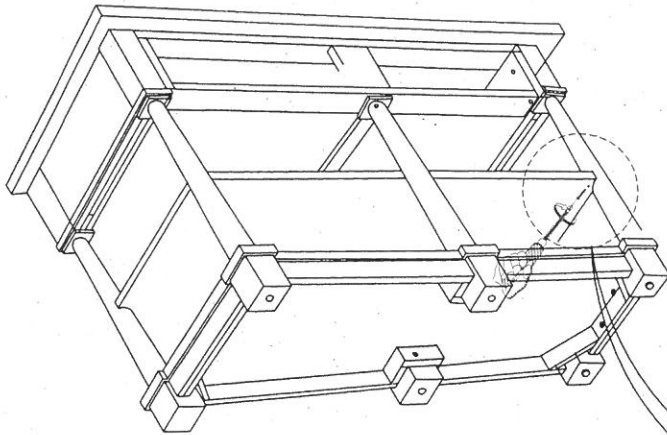
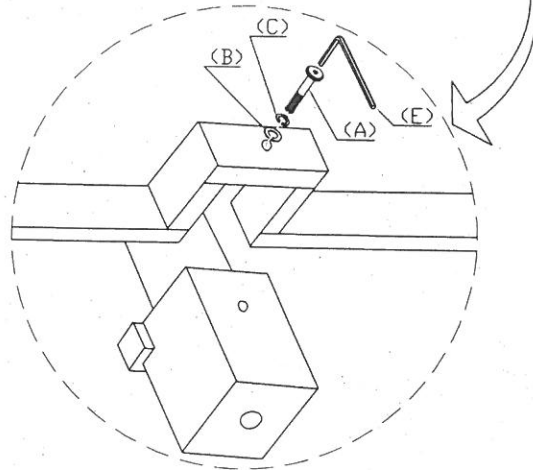
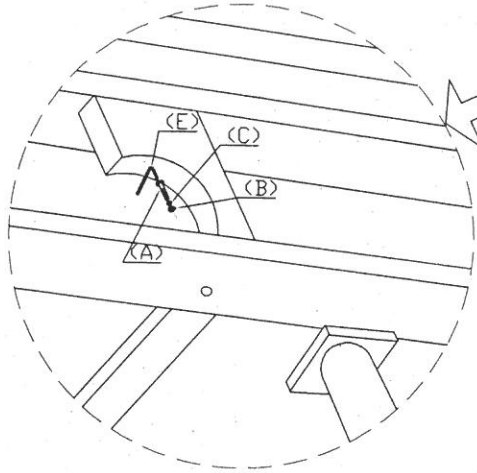
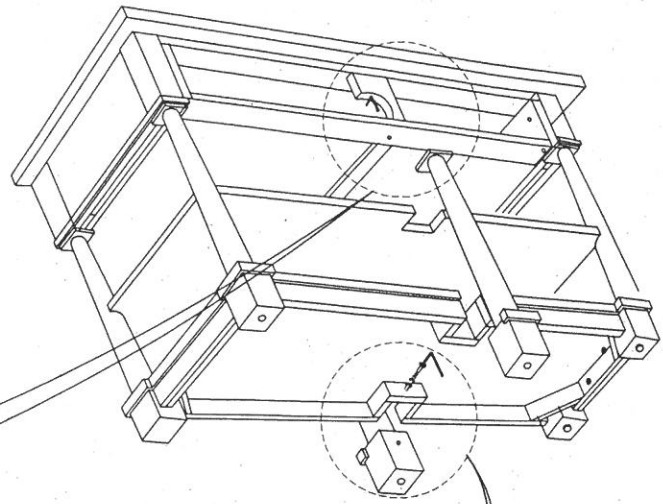
ALIGN AND ATTACH THE SECOND END ASSEMBLY TO THE TOP ASSEMBLY, SHELF AND BASE ASSEMBLY USING (6) ALLEN BOLT "A", (6) SPRING WASHER "C" AND (6) FLAT WASHER "B" WITH ALLEN KEY "E".

STEP 6.

INSTALL FRONT CENTER LEG WITH (2) ALLEN BOLT "A", (2) SPRING WASHER "C" AND (2) FLAT WASHER "B" WITH ALLEN KEY "E".

STEP 7.

TURN SERVER ON TO ITS FRONT SIDE AND INSTALL THE BACK LEG WITH (2) ALLEN BOLT "A", (2) SPRING WASHER "C" AND (2) FLAT WASHER "B" WITH ALLEN KEY "E".



STEP 8.

TURN SERVER ON ITS TOP SURFACE AND SECURE THE MID SHELF WITH (6) WOOD SCREWS "D" (SCREW DRIVER NOT INCLUDED).

STEP 9.

SET SERVER UPRIGHT AND INSTALL DRAWERS.

