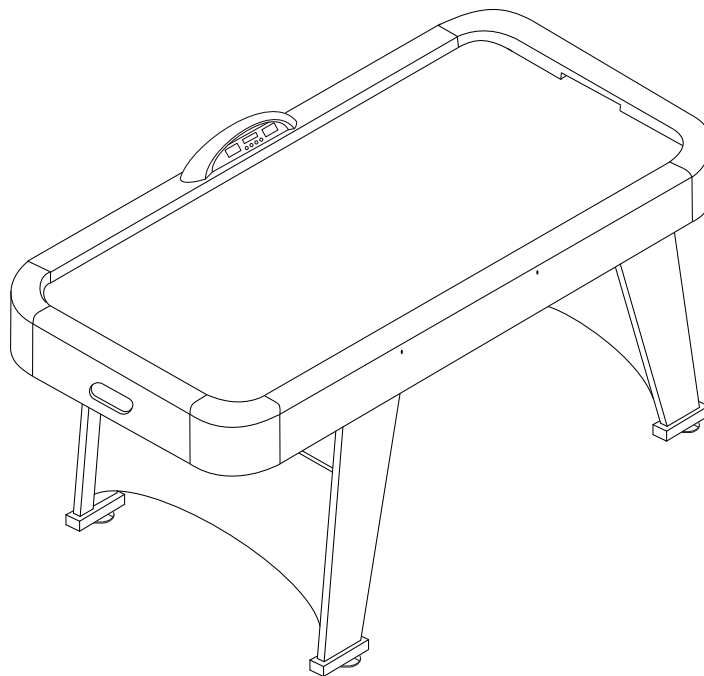




**Supernova Air Powered
Hockey Table**

Item 64-3015

SUPERNOVA AIR POWERED HOCKEY TABLE



Replacement Parts

Order direct at www.gldproducts.com
or call our Customer Service department at
(800) 225-7593
8 am to 4:30 pm Central Standard Time

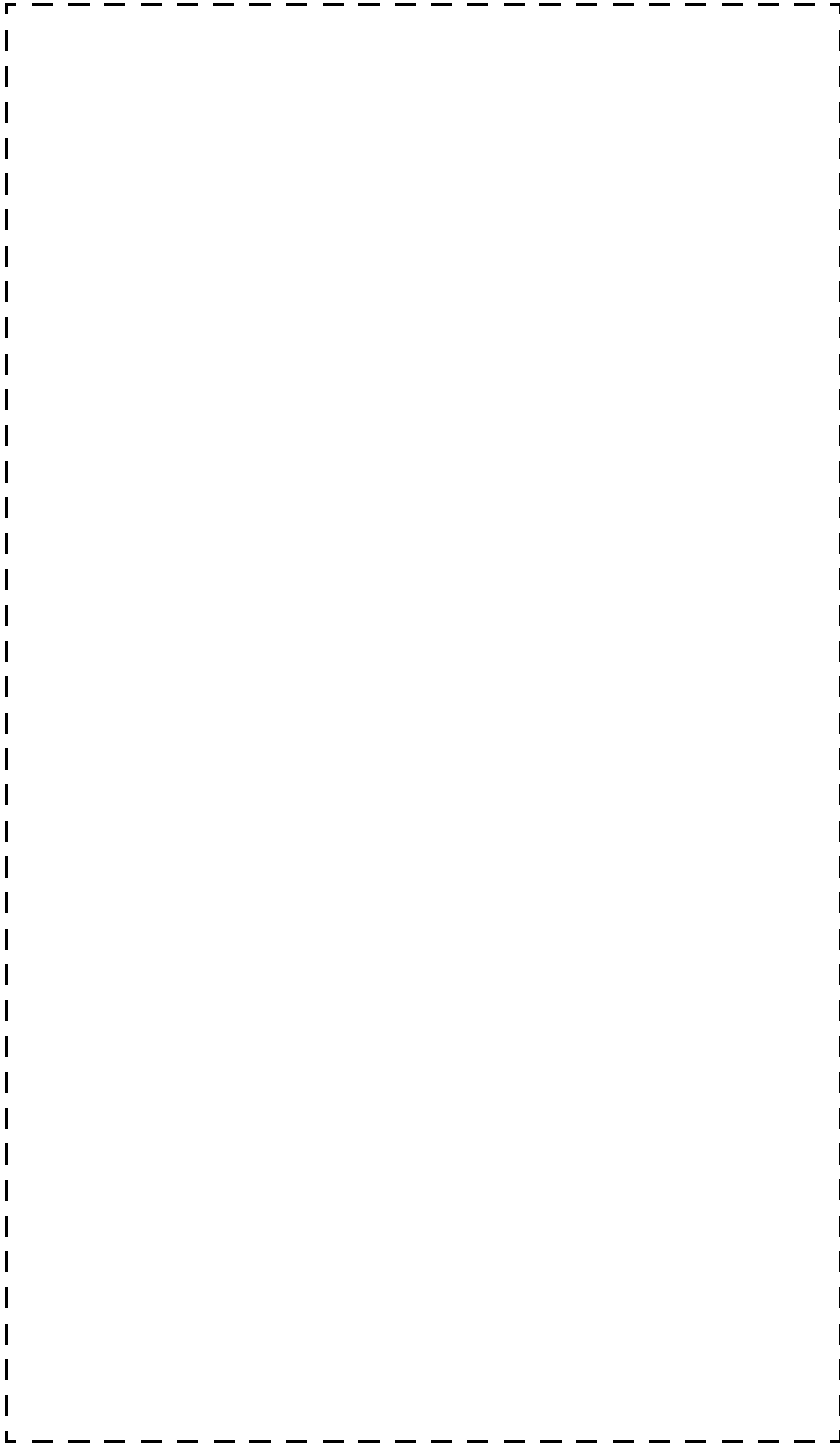
GLD Products

**Supernova Air Powered
Hockey Table**

Item 64-3015

Staple your receipt here.

Important: A copy of your receipt will be needed to activate your warranty (see page 14).





Congratulations and THANK YOU for purchasing the Supernova Air Powered Hockey Table. You have chosen a product that should provide years of entertainment. To assist you with customer service and warranty claims, staple your receipt to the inside cover, then keep this manual in a safe place for future reference.


GLD Products

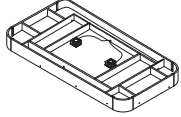
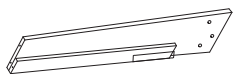
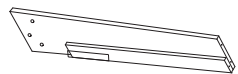
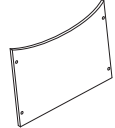
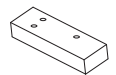
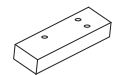

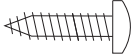
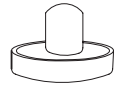


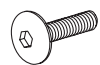


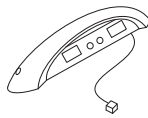


S84 W19093 Enterprise Drive
Muskego, WI 53150 USA
1-800-225-7593
Fax: 1-800-841-6944
Email: gld@gldmfg.com
Web: www.gldproducts.com

This manual may have been updated. For the latest manual visit the GLD Products website.

	<p>Place your package near the location where it will be used. Carefully unpack all components and verify you have all the correct pieces.</p> <p>If you notice missing or defective parts, please call us at: 1-800-225-7593.</p>
---	---

	<p>Please read and understand all instructions before beginning assembly.</p> <p>This assembly will require 2 adults.</p> <p>This product is not for use by children without adult supervision.</p>
---	--

	<p>WARNING: This game may potentially trigger seizures for people with photosensitive epilepsy. Player discretion is advised.</p>
---	---

Part No./ Qty	Illustration/ Order Number	Part No./ Qty	Illustration/ Order Number	Part No./ Qty	Illustration/ Order Number
1 Qty. 1	 Air Hockey Cabinet Order No. 4-236	2 Qty. 2	 Right Leg Order No. 4-237	3 Qty. 2	 Left Leg Order No. 4-238
4 Qty. 2	 Leg End Panel Order No. 4-239	5 Qty. 2	 Right Leg Base Order No. 4-240	6 Qty. 2	 Left Leg Base Order No. 4-241
7 Qty. 2	 3.5 mm x 14mm Screw Order No. 4-229	8 Qty. 8	 3.5 mm x 35 mm Screw Order No. 4-230	9 Qty. 2	 Red Pusher Order No. 2-18
10 Qty. 2	 Red Puck Order No. 4-117	11 Qty. 12	 Washer Order No. 4-231	12 Qty. 12	 8 mm x 30 mm Bolt Order No. 4-242
13 Qty. 12	 4 mm x 30mm Screw Order No. 4-246	14 Qty. 1	 Adapter Order No. 4-244	15 Qty. 1	 Electronic Scorer Order No. 4-243
16 Qty. 4	 Leg Leveler Order No. 4-245	17 Qty. 1	 Allen Wrench Order No. 2-116		

IF YOU HAVE A WARRANTY CLAIM, CALL US FIRST

Please see page 14.

GLD Products

Available 8 am to 4:30 pm Central Standard Time

S84 W19093 Enterprise Drive
Muskego, WI 53150 USA
1-800-225-7593
Fax: 1-800-841-6944
Email: gld@gldmfg.com
Web: www.gldproducts.com

For all claims, please have your receipt and item number when you call. The product item number can be found on the front cover.

If you are instructed to return the product for service, you are responsible for shipping the unit at your expense.

PRODUCT REGISTRATION

Important: The product registration form on page 15 and a copy of your receipt must be completed and returned within 10 days of purchase to validate your warranty.

Online registration is also available. Go to <http://gldproducts.com/warranty-information> or click on this link. Follow the online instructions.

Preparing for Assembly

- Be sure to unpack all of the parts included in this package. Check inside any tubes or sleeves. Save all packing material until the product is fully assembled and functional.
- Compare the parts in your package with the Parts Identifier description on page 5.
- After unpacking large products, some disassembly may be required prior to beginning the assembly.

Tools Required

- Phillips Screwdriver/Allen Wrench (#17)
- Level (not included)
- Electric screwdriver may be helpful. **CAUTION:** You must set at LOW TORQUE and use extreme caution because you could overtighten the hardware, strip the screws, or damage the table.

Assembly Tips

Make sure you understand the following before you begin to assemble your game table.

1. READ THIS MANUAL all the way through before beginning assembly.
2. When installing parts that have more than one bolt, start ALL bolts in that part by hand before tightening anything.
3. Some drawings or images in this manual may not look exactly like your product.
4. You will need a second adult to assist with this assembly.

Note: Save all packing materials until the parts have been inspected and the table is assembled.

Unpack the Pieces

- Lay the box on a flat surface (floor). You may want this near your area of assembly.
- Unpack the boxes and part bags. Inspect and count the parts. The Parts Identifier page can be used to record your results.
- If any parts are damaged or missing, contact GLD Customer Service.
- Missing fasteners may be purchased at a hardware store using the descriptions on the Parts Identifier page.

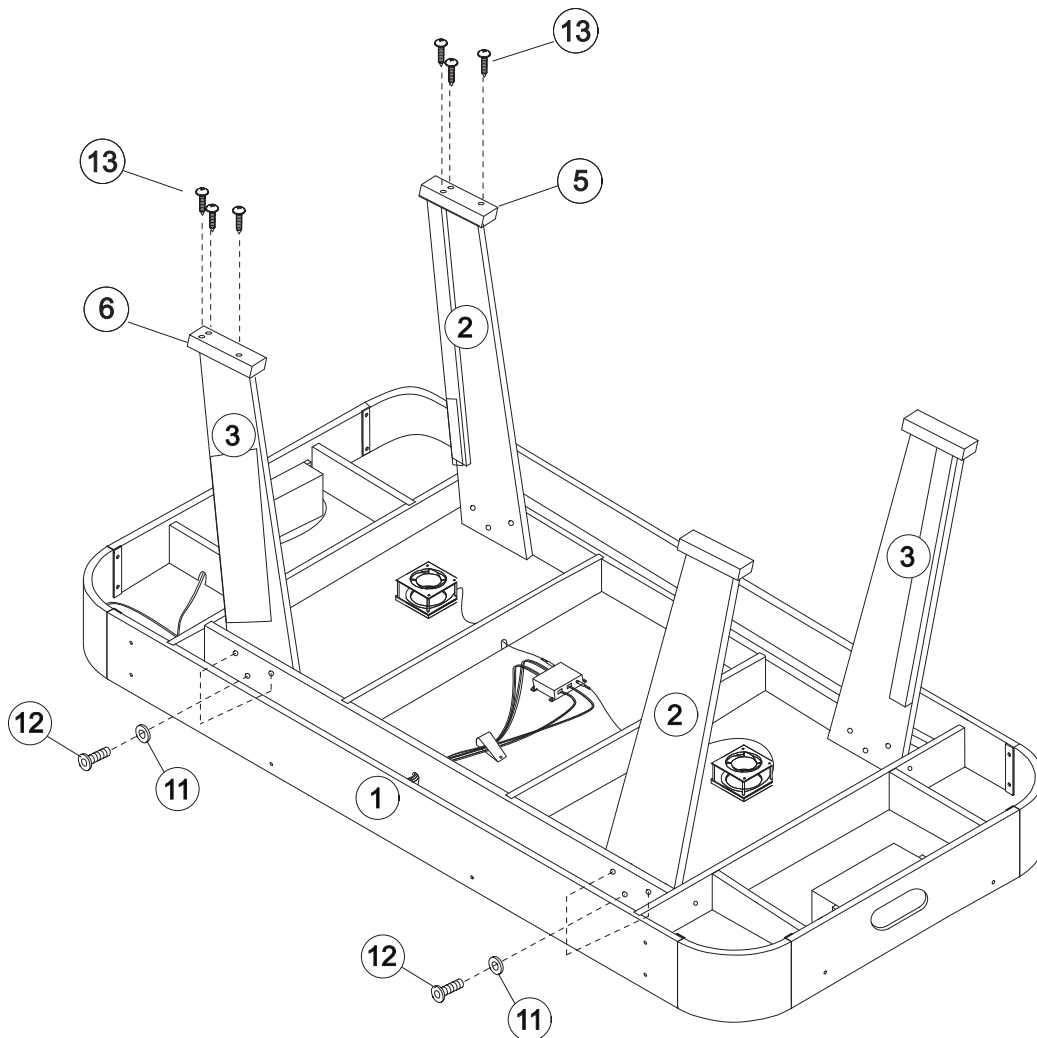
Games

This game table includes the equipment and game pieces for Air Powered Hockey. The rules for this game are not discussed in this manual.

STEP 1 - ATTACH THE LEGS

The two legs (#2 and #3) are not the same.

1. Position a leg (#2 or #3) to fit against the support brace. Use three washers (#11) and three bolts (#12) to hold the two pieces together.
2. Attach the other legs in the same manner.
3. Position a leg base (#5 or #6) over the bottom end of a leg. Be certain the screw holes line up with the bottom structure of the leg. Use three screws (#13) to secure the leg base (#5 or #6) to the leg.
4. Attach remaining bases in the same manner.

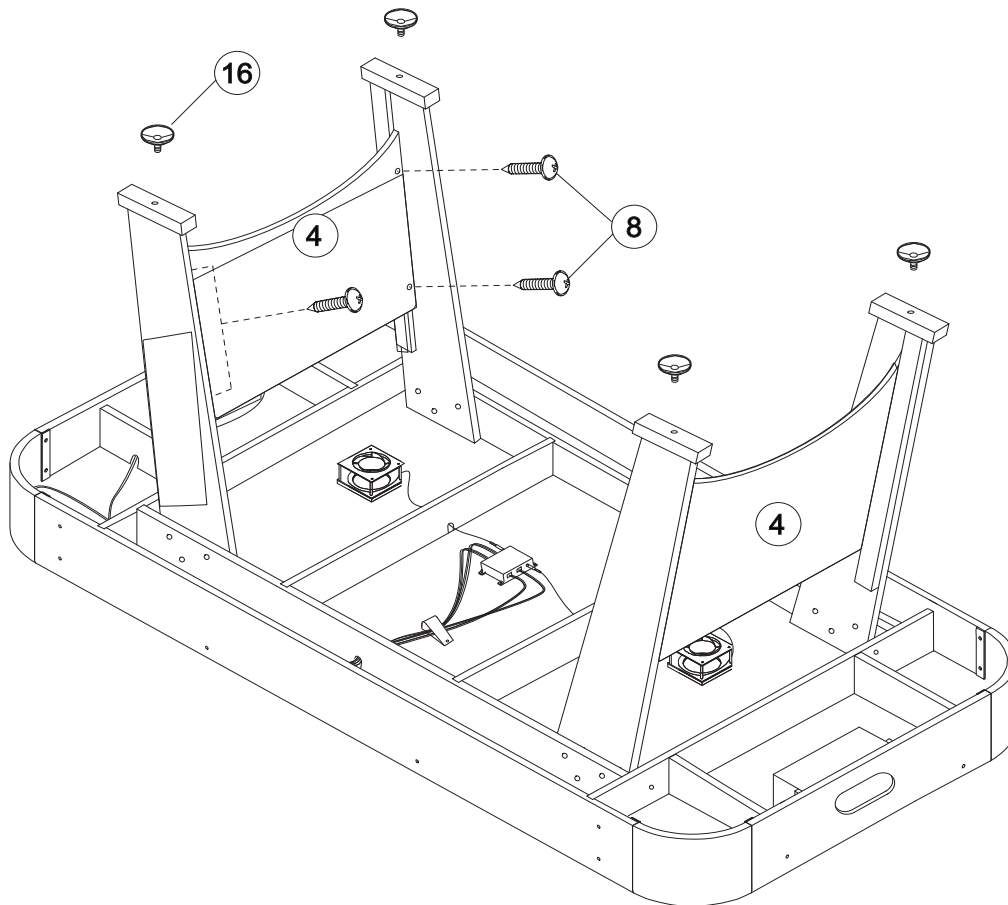


STEP 2 - ATTACH THE LEG END PANELS

1. Position a leg end panel (#4) so the bottom end (end closest to the table top) has the straight edge and the screw holes are lined up with the holes in the legs.
2. Insert a screw (#8) into the two holes on each edge of the end panel. Finger start the screws into the holes in the legs. Tighten the screws (#8).

NOTE: It may be easier to secure one side of the end panel before securing it to the other leg.

3. Repeat for the remaining end panel (#4).
4. Locate the four leg levelers (#14). Screw one halfway into the bottom of each leg.



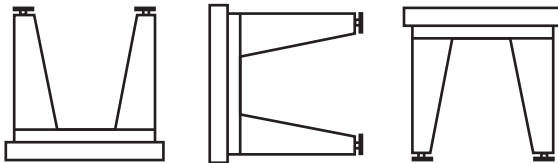
STEP 3 - TURN THE TABLE OVER

The table is ready to be turned over.

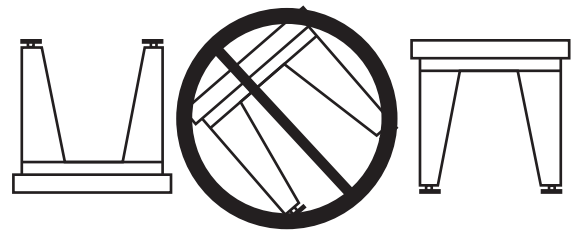
USE AT LEAST TWO PEOPLE TO LIFT THE TABLE ASSEMBLY AND TURN IT OVER TO REST ON THE LEGS.

DO NOT ROLL THE TABLE OVER. This will place a sideways force on the legs. The legs should be off the floor until the table assembly is rotated completely. Set the table down.

DO THIS

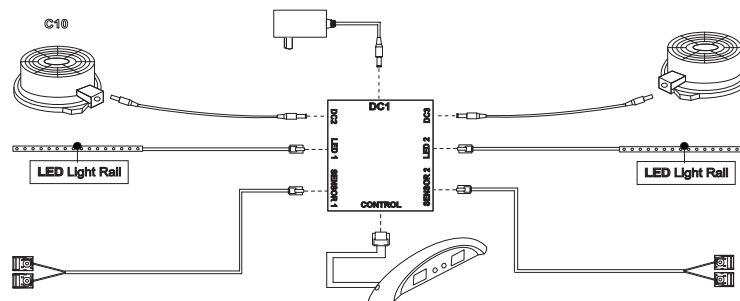
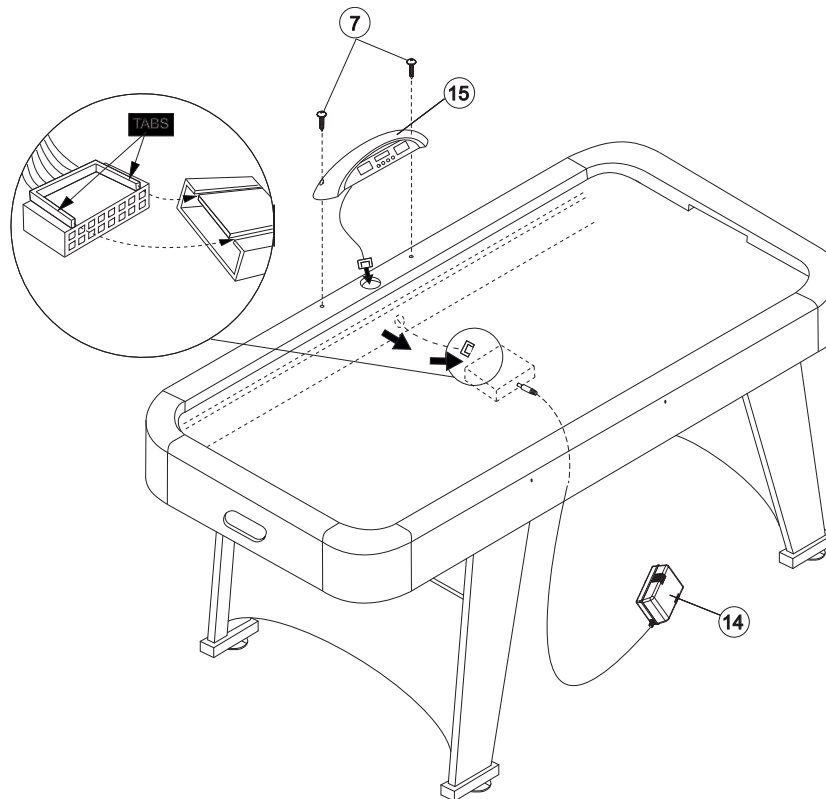


NOT THIS



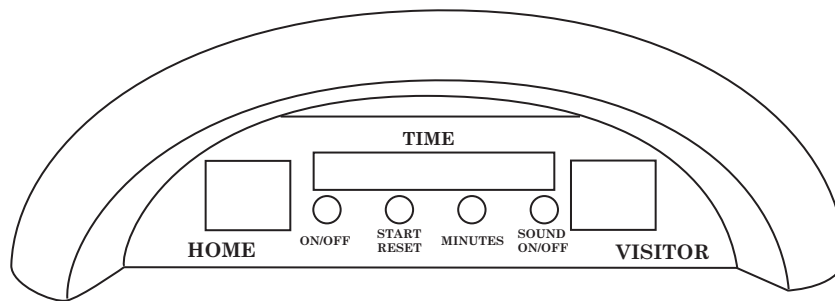
STEP 4 - MOUNT THE SCOREBOARD

1. Position the electronic scorer (#15) over the holes in the table side rail.
2. Route the wire from the electronic scorer (#15) through the large hole. Set the scoreboard down on the table side rail.
3. Hold the electronic scorer (#15) in position and insert two screws into the table to hold the scorer. Tighten the screws (#7).
4. Plug the connector (on end of electronic scorer) into the bottom of the control on the under side of the table.
5. Under the table top, check the wiring connections.



STEP 5 - OPERATION

1. Plug the electrical adapter (#15) into a standard wall plug. The fans will turn on.
2. To turn the electronic scorer (#15) on, press the On/Off button once. Wait for the opening fanfare and the countdown to finish. To turn the scoreboard off, press and hold the On/Off Button for three seconds.
3. Press the On/Off button to begin a game. Scoring is registered automatically. The first player to reach 9 and score again, wins. To start a new game, press the reset button. After the score counts down, press the On/Off button.
4. To turn the sound off, press the sound button once. Press again to turn the sound back on.
5. The scorer has four modes or time periods. Press the minutes button to scroll through 15, 10 or 5 minute game timer or no timer. Then start the game.

**STEP 6 - LEVEL THE TABLE**

1. Place the table in position.
2. Use a carpenters level to find the low side of the table.
3. Raise or lower the legs as needed to level the table.
4. Level the table side-to-side and end-to-end. When the game is turned on, the puck will float to a low side. Final leveling can be performed if needed.

Care and Use of your Table

- This product is intended for INDOOR use only.
- DO NOT sit, climb, or lean on the table.
- DO NOT drag the table when moving it. This will damage the legs.
- Keep your table covered.
- To clean the hard surfaces spray a cloth with a mild cleaner and wipe.
- Pucks that fly off the table may have chipped edges. Inspect the puck and replace if needed.
- The air holes may become plugged, causing the puck to drag. A small drill bit can be used to re-open the holes. DO NOT use a power drill. Instead, hold the drill bit in your fingers and clear the holes.

90-DAY LIMITED WARRANTY

The Manufacturer warrants to the original retail purchaser that this product is free from defects in material and workmanship under normal use and conditions for a period of ninety (90) days from the date of original purchase. The Manufacturer's liability is limited to the repair or replacement, at its option, of any defective product and shall not include any liability for indirect, incidental or consequential damages of any kind. Should this product become defective due to material or workmanship within the warranty period, contact our Customer Service Department. This warranty is not transferable and does not cover normal wear and tear or damage caused by improper usage, negligence, misuse, abuse, transportation damage, acts of nature, or accident (including failure to follow the instructions in this manual). It does not cover expendable items such as batteries, light bulbs, fuses, accessories, cosmetic parts and other items that wear out due to normal usage, including felt covered areas of the playing surface. This warranty is also void if the product is disassembled and reassembled, damaged, modified from its original state, or used for other than indoor personal residential use (no commercial or rental applications).

This warranty gives you specific legal rights, and you may have other rights which vary from state to state.

IF YOU HAVE A WARRANTY CLAIM, CALL US FIRST (8 - 4:30 CST)

Please have your receipt and item number (found on the front cover) when you call.

GLD Products

S84 W19093 Enterprise Drive
Muskego, WI 53150 USA
1-800-225-7593
Fax: 1-800-841-6944
Email: gld@gldmfg.com
Web: www.gldproducts.com

If you are instructed to return the product for service, you are responsible for shipping the unit at your expense to the above address in packaging that will protect against further damage. All warranty or repair requests require a Return Authorization Number prior to returning the item.

PRODUCT REGISTRATION

Important: The product registration form on page 15 must be completed and returned along with a copy of your receipt within 10 days of purchase to validate your warranty.

Online registration is also available. Go to <http://gldproducts.com/warranty-information> or click on this link. Follow the online instructions.

REGISTER YOUR PRODUCT

Place postage here

Complete this form, include a copy of your receipt, fold, tape (do not staple) and return within 10 days of purchase. This protects your warranty and will help us develop new products!

Cut here.

GLD Products
Warranty Department
S84 W19093 Enterprise Drive
Muskego, WI 53150 USA

Fold here second.



P R O D U C T S

www.gldproducts.com

GAME TABLES	HOME CASINO
GAMES AND ACCESSORIES	BILLIARD CUES
BILLIARD ACCESSORIES	DARTBOARDS
SOFT-TIP DARTS	STEEL-TIP DARTS
FLIGHTS AND SHAFTS	DART CASES AND ACCESSORIES

Fold here first.

Name	Date of Purchase
Address	Phone-Day
City	Phone-Evening
State Zip	Email
Purchase Price:	Item: 64-3015 Supernova Air Powered Hockey Table
Store Name:	

Remember to attach a copy of your receipt.

This page is left blank intentionally.

Mail To: GLD Products
S84 W19093 Enterprise Drive
Muskego, WI 53150 USA
1-800-225-7593 • FAX 800-841-6944
Email: gld@gldmfg.com
Web Site: www.gldproducts.com

***Supernova Air Powered
Hockey Table***
Item 64-3015
Parts Re-Order Form

Please call or consult the GLD website gldproducts.com to order the following parts.

Order No.	Description
4-238	Left Leg
4-237	Right Leg
4-239	Leg End Panel
4-243	Scorer
4-230	3.5 mm x 35 mm Screw
4-231	Flat Washer
2-18	Goalie
4-117	Hockey Puck
2-116	Allen Wrench
4-236	Table Top Assembly
4-247	Fan - preassembled
4-245	Leg Leveler
4-241	Left Leg Base
4-240	Right Leg Base
4-229	3.5 mm x 14 mm Screw
4-246	4 mm x 50 mm Screw

This page is left blank intentionally.

GLD[®]

P R O D U C T S

www.gldproducts.com

GAME TABLES

HOME CASINO

GAMES AND ACCESSORIES

BILLIARD CUES

BILLIARD ACCESSORIES

DARTBOARDS

SOFT-TIP DARTS

STEEL-TIP DARTS

FLIGHTS AND SHAFTS

DART CASES AND ACCESSORIES



PROUD MANUFACTURER OF



S84 W19093 Enterprise Drive • Muskego, WI 53150 USA
262.679.8730 or 1.800.225.7593 tele
262.679.8738 or 1.800.841.6944 fax
Email: gld@gldmfg.com
www.gldproducts.com