

A **first impression** that lasts



Stand out effortlessly with
the Schlage range of
entrance door hardware.

Our Schlage door hardware
offers a simple selection
process, enhances the style
of your home, keeps it safe
and even makes it smarter.

Protect what matters most.





Credit: Dennis Radermacher - Lightforge

A FIRST IMPRESSION THAT LASTS

Trusted to secure and decorate millions of homes around the world, Schlage creates stylish, innovative door hardware solutions. Ranging from a traditional mechanical statement to a smarter connected solution, Schlage protects what matters most.

FINISH YOUR HOME IN STYLE

Schlage offers a variety of finishes to complement both the front door itself and the overall style of the home, allowing homeowners to freely express their individuality.



PHYSICAL VAPOUR
DEPOSITION – BLACK
PVDB



BLACK/MATTE BLACK
B/MB



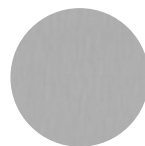
GRAPHITE
G



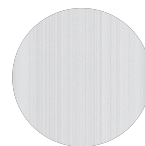
SATIN CHROME
SCP



SATIN NICKEL
SNP



SATIN STAINLESS STEEL
SSS



SILVER
SE



Credit: Devin A. Kildamacher / Lightforge



Electronic

STRIKING AND VERSATILE, BRIDGING MODERN STYLES WITH SMART TECHNOLOGY

Schlage connected smart locks combine innovative technology with modern sleek designs, providing your home with the convenience of keyless simplicity. Pair your Schlage electronic lock with our stylish range of grand pull handles and entrance sets for a smarter and bolder first impression.



Schlage Encode™

MAKING HOMES SMARTER

The revolutionary Schlage Encode™ Smart Wi-Fi Deadbolt connects directly to your home Wi-Fi. There's no need to purchase an extra accessory or hub to control your lock from anywhere, making it easy and intuitive to use.

Simply pair your lock with the Schlage Home app on your smartphone to lock and unlock your door from anywhere. You specify who has access and when by setting up to 100 codes, or send virtual keys to trusted friends, family or guests via text or email. Receive notifications when your lock has been accessed.

Total control and peace of mind
at your fingertips.



ENCODE (BLACK)
SRE60120



ENCODE (SNP)
SRE60121

FEATURES

- Graded best in Security, Durability and Finish (BHMA Grading System)
- Built in Wi-Fi for remote access and control
- Fingerprint resistant illuminated touch screen
- Built-in alarm
- Auto locking
- Low battery notifications
- Schlage C5 cylinder
- 4 x AA alkaline batteries included
- 2.4 GHz Wi-Fi technology

ACCESS

- Access by PIN, Schlage Home app, key, or virtual assistants
- 100 PIN code capacity
- User codes can be set up as permanent, temporary or recurring access
- Works with Amazon Alexa and Google Assistant

DOOR SPECIFICATIONS

- 54mm hole preparation - easy to retrofit
- 60mm or 70mm backset (adjustable)
- 35mm to 46mm door thickness
- Extension kit available for 47mm to 64mm

WARRANTY

- 3 years electronic warranty
- Limited lifetime mechanical warranty



Schlage Encode ● B ● SNP



Schlage **Ascent**

THE ULTIMATE UPGRADE TO MODERNISE ANY HOME.

Seamlessly integrating smart technology with a sleek design, the Schlage Ascent range of smart locks offers keyless entry, via fingerprint, keypad, key tag or app, ensuring that your home is both stylish and secure.

Enjoy the convenience and peace of mind knowing that your home is protected by a trusted name in security, while also benefiting from the simplicity that smart technology brings to your daily life.



ASCENT SMART ENTRANCE LEVER (BLACK)
SREASC02B



ASCENT SMART ENTRANCE LEVER (GRAPHITE)
SREASC02G



ASCENT SMART DEADBOLT (BLACK)
SREASC01B



ASCENT SMART DEADBOLT (GRAPHITE)
SREASC01G

FEATURES

- Weather resistant (IP56)
- Aluminium alloy constructions
- Backlit touch screen
- Built-in alarm
- Auto locking
- USB-C for emergency power
- Schlage C5 cylinder which can be keyed alike with other Schlage locks
- 4x AA alkaline batteries included

ACCESS

- Access by fingerprint, keypad, key tags, app or back-up key
- 150 user code capacity
- Remote access available with Schlage Wi-Fi Bridge BZ100 (sold separately)
- Works with Amazon Alexa and Google Assistant

DOOR SPECIFICATIONS

- Easy to retrofit
- 60mm or 70mm backset (adjustable)
- 32mm to 55mm door thickness

WARRANTY

- 2 years mechanical and electronic warranty



Ascent Smart Entrance Lever & Deadbolt ● B ● G



Schlage Artus

NARROW PROFILE SMART LOCK

Introducing the sleek Schlage Artus Smart Lock, designed with versatility to suit various door profiles. The Schlage Artus is the perfect blend of advanced technology with a modern design, offering you the ultimate security and convenience for your home.

The Schlage Artus seamlessly integrates with the Schlage Breeze app, to easily manage and monitor your lock. Retrofit from an existing mechanical solution for a seamless digital solution.

Say goodbye to lost keys and forgotten combinations!



ARTUS SMART ENTRY NARROW PROFILE SMART LOCK (BLACK)

Furniture only: SREARTMB

Furniture and lock: 30mm: SREART30MB* 40mm: SREART40MB* 60mm: SREART60MB*

Furniture and multipoint lock: 40mm: SREART4PTER-40MB* 60mm: SREART4PTER-60MB*



ARTUS SMART ENTRY NARROW PROFILE SMART LOCK (SNP)

Furniture only: SREARTSNP

Furniture and lock: 30mm: SREART30SNP* 40mm: SREART40SNP* 60mm: SREART60SNP*

Furniture and multipoint lock: 40mm: SREART4PTER-40SNP* 60mm: SREART4PTER-60SNP*

FEATURES

- Weather resistant (IP66)
- Made from 304 grade Stainless Steel
- Disability compliant lever
- Multipoint locking provides superior weatherproof seal and additional security
- Backlit touch screen
- Built-in alarm
- Auto locking and passage mode
- Low battery notifications
- Random PIN number function protects your entry code

ACCESS

- Access by PIN, Schlage Breeze app, key, or virtual assistants
- Up to 150 PIN code and 200 key tag capacity
- User codes can be set up as permanent, temporary or recurring access
- Remote access available with Schlage Wi-Fi Bridge BZ100 (sold separately)
- Works with Amazon Alexa and Google Assistant
- 4 x AA alkaline batteries included

DOOR SPECIFICATIONS

- 30mm, 40mm or 60mm backset options available
- 40mm or 60mm backset for multipoint locking
- 35mm to 60mm door thickness

WARRANTY

- 2 years mechanical and electronic warranty



Schlage Artus Smart Entry Lever Set ● B ● SNP

* Product codes include mortise lock (and rod kit for multipoint lock)



Schlage Resolute

SMART MORTICE LOCK

A smart lock with smart technology, the Schlage Resolute is sure to impress the neighbours! For keyless simplicity and peace of mind, the Schlage Resolute is easy to operate, features Bluetooth technology and advanced security options.

Its wide profile makes it perfect for retrofitting and modernising outdated hardware, for a seamless smart solution with mortice locking.

Simplify your life with Schlage Resolute and make keyless living a breeze!



RESOLUTE SMART MORTICE LOCK SET (BLACK)

Furniture and lock: 60mm: SRERES60MB*

Furniture and multipoint lock: 60mm: SRERES4PTER-60MB*



RESOLUTE SMART MORTICE LOCK SET (SILVER)

Furniture and lock: 60mm: SRERES60SE*

Furniture and multipoint lock: 60mm: SRERES4PTER-60SE*

FEATURES

- Weather resistant (IP66)
- Made from 304 grade Stainless Steel
- Multipoint locking provides superior weatherproof seal and additional security
- Backlit touch screen
- Built-in alarm
- Auto locking, passage mode and privacy toggle
- Low battery notifications
- Random PIN number function protects your entry code

ACCESS

- Access by PIN, Schlage Breeze app, key, or virtual assistants
- Up to 150 PIN code and 200 key tag capacity
- User codes can be set up as permanent, temporary or recurring access
- Remote access available with Schlage Wi-Fi Bridge BZ100 (sold separately)
- Works with Amazon Alexa and Google Assistant
- 4 x AA alkaline batteries included

DOOR SPECIFICATIONS

- 60mm backset (or 70mm retrofit options available)
- 35mm to 70mm door thickness

WARRANTY



- 2 years mechanical and electronic warranty



Schlage Resolute Smart Mortice Lock Set ● B ● SE

* Product codes include mortice lock (and rod kit for multipoint lock)

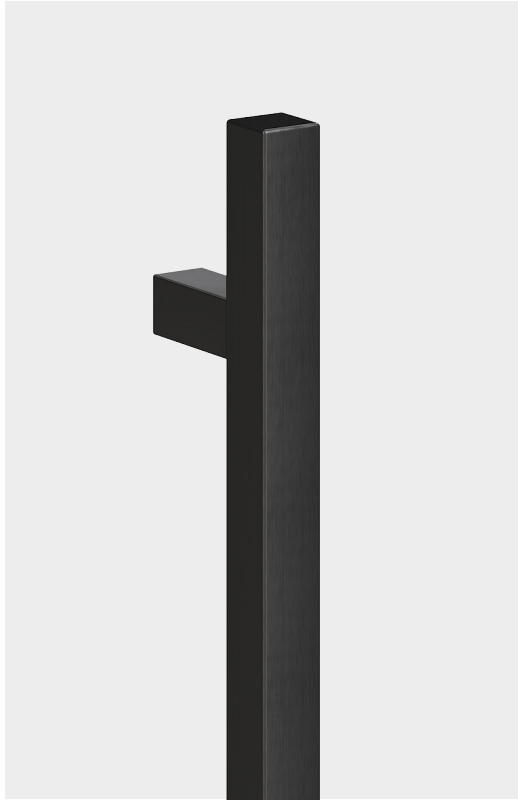
SCHLAGE ELECTRONIC SELECTOR CHART

	Schlage Encode™	Schlage Ascent Smart Deadbolt
		
Key benefit	Use Schlage Home for easy setup and control with iOS and Android smartphones	Use Schlage Breeze for easy setup and control with iOS and Android smartphones
Sharing access	Use Schlage Home app to manage access codes and share virtual keys	Use Schlage Breeze app to manage access codes and share virtual keys
Remote access	Built-in Wi-Fi provides remote access – no additional accessories required	Remote access with the Schlage Wi-Fi Bridge (BZ100)
Voice assistants	Amazon Alexa Google Assistant	Amazon Alexa Google Assistant
Access codes	100	Access by fingerprint, keypad, key tags, app or back-up key 150 user code capacity
Advanced security	Built-in alarm	Built-in alarm Random PIN number protection
Auto locking	Yes	Yes
Durability	Graded best in Security, Durability and Finish (BHMA Grading System)	Weather resistant
Available finishes	Black and Satin Nickel Plate	Black and Graphite
Warranty*		
- Mechanical	Limited lifetime	2 years
- Electronic	3 years	2 years

Schlage Ascent Smart Entrance Lever	Schlage Resolute Smart Mortice Lock	Schlage Artus Narrow Profile Smart Lock
		
<p>Use Schlage Breeze for easy setup and control with iOS and Android smartphones</p> <p>Contains built-in lever</p>	<p>Use Schlage Breeze for easy setup and control with iOS and Android smartphones</p> <p>Contains built-in lever</p>	<p>Use Schlage Breeze for easy setup and control with iOS and Android smartphones</p> <p>Contains built-in lever</p>
<p>Use Schlage Breeze app to manage access codes and share virtual keys</p>	<p>Use Schlage Breeze app to manage access codes and share virtual keys</p>	<p>Use Schlage Breeze app to manage access codes and share virtual keys</p>
<p>Remote access with the Schlage Wi-Fi Bridge (BZ100)</p>	<p>Remote access with the Schlage Wi-Fi Bridge (BZ100)</p>	<p>Remote access with the Schlage Wi-Fi Bridge (BZ100)</p>
<p>Amazon Alexa</p> <p>Google Assistant</p>	<p>Amazon Alexa</p> <p>Google Assistant</p>	<p>Amazon Alexa</p> <p>Google Assistant</p>
<p>Access by fingerprint, keypad, key tags, app or back-up key</p> <p>150 user code capacity</p>	<p>Keypad: 150</p> <p>Key tag: Up to 200</p>	<p>Keypad: 150</p> <p>Key tag: Up to 200</p>
<p>Built-in alarm</p> <p>Random PIN number protection</p>	<p>Built-in alarm</p> <p>Random PIN number protection</p> <p>Available with multipoint locking</p>	<p>Built-in alarm</p> <p>Random PIN number protection</p> <p>Available with multipoint locking</p>
<p>Yes</p>	<p>Yes</p>	<p>Yes</p>
<p>Weather resistant</p>	<p>IP66 rain and dust resistant</p>	<p>IP66 rain and dust resistant</p>
<p>Black and Graphite</p>	<p>Black and Silver</p>	<p>Black and Satin Nickel Plate</p>
<p>2 years</p> <p>2 years</p>	<p>2 years</p> <p>2 years</p>	<p>2 years</p> <p>2 years</p>

* For the finish warranty, refer to our website allegion.co.nz/finisheswarranty

Schlage Electronic Entrance Sets



BLACK



VERTA ENCODE

Mini Lever: SRS69-800ML
Turn: SRS69-800
Roller Latch: SRS69-800R



ANDOR ENCODE

Mini Lever: SRS61-625ML
Turn: SRS61-625
Roller Latch: SRS61-625R



TRENTO ENCODE

Mini Lever: SRS64-620ML
Turn: SRS64-620
Roller Latch: SRS64-620R



TURIN ENCODE

Mini Lever: SRS63-600ML
Turn: SRS63-600
Roller Latch: SRS63-600R



CORFU ENCODE

Mini Lever: SRS67-600ML
Turn: SRS67-600
Roller Latch: SRS67-600R



CENTURY/LATITUDE ENCODE

SRS60MB



MINI LEVER SQUARE



TURN SQUARE



MINI LEVER ROUND



TURN ROUND



ROLLER LATCH

OPTIONAL VARIANTS

Pull handles, mini levers, and thumb turns ● PVDB ● MB Schlage Encode, and Century/Latitude ● B

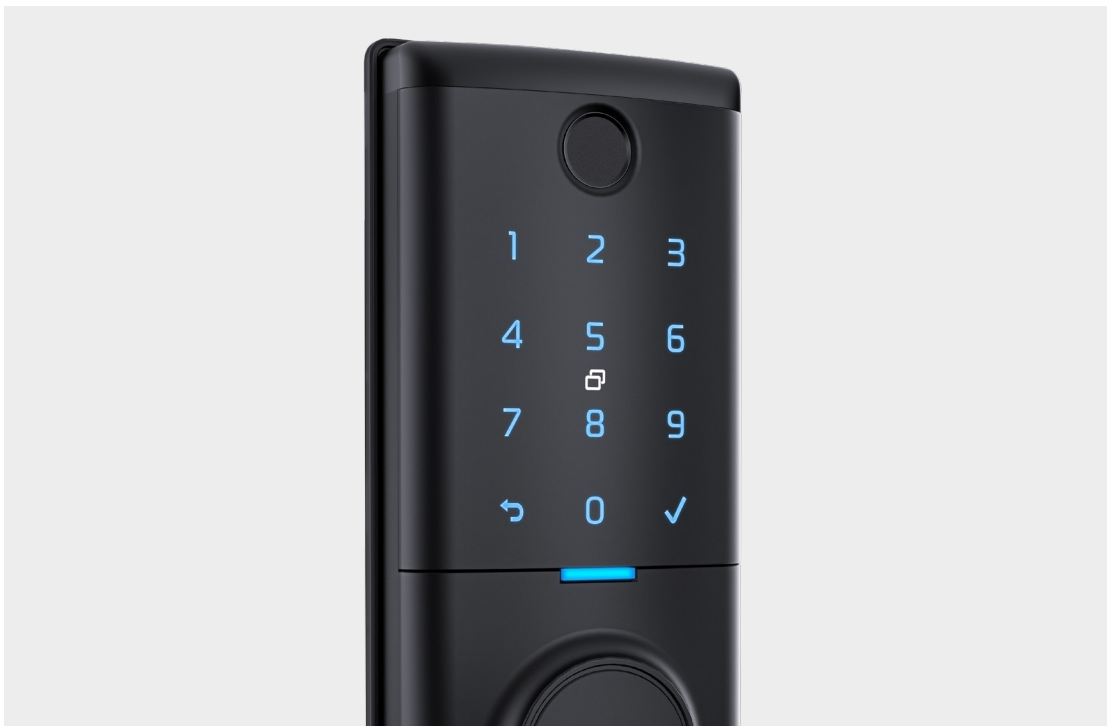
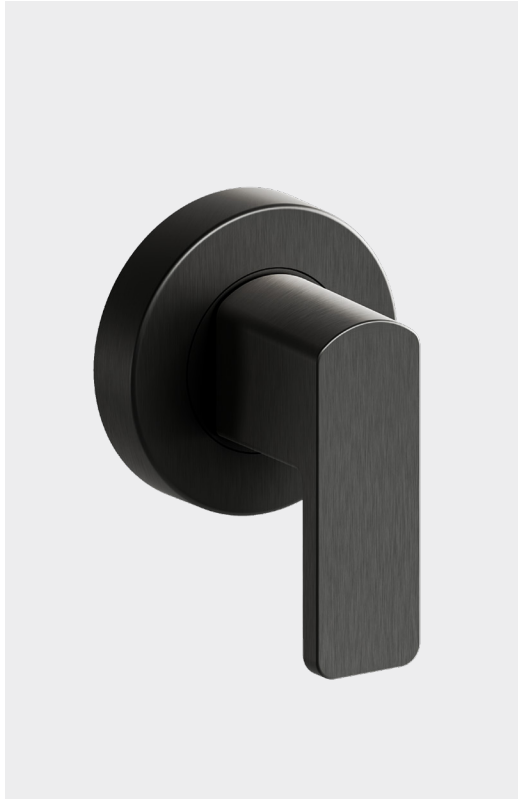
Add MB or PVDB to the end of mini lever, turn, or roller latch code for desired finish. Verta only available in PVDB.

WORKS WITH ENCODE



Smart deadbolt sets consist of Schlage Encode™ Smart Wi-Fi Deadbolt, pull handles, and mini lever, turn, or roller latch (applicable sets only). Pull handles (Verta, Andor, Trento, Turin, and Corfu) are made from 316L marine grade stainless steel, and are available in Physical Vapour Deposition - Black (PVDB) and powder coated Matte Black (MB) (Verta is only available in PVDB). Gripset (Century/Latitude) is made from solid forged brass, with a black powder coat finish. Strike available separately for mini lever, turn, or roller latch.

Schlage Electronic Entrance Sets



BLACK



VERTA ASCENT
Mini Lever: SRS59-800ML
Turn: SRS59-800
Roller Latch: SRS59-800



ANDOR ASCENT
Mini Lever: SRS51-625ML
Turn: SRS51-625
Roller Latch: SRS51-625R



TRENTO ASCENT
Mini Lever: SRS54-620ML
Turn: SRS54-620
Roller Latch: SRS54-620R



TURIN ASCENT
Mini Lever: SRS53-600ML
Turn: SRS53-600
Roller Latch: SRS53-600R



CORFU ASCENT
Mini Lever: SRS57-600ML
Turn: SRS57-600
Roller Latch: SRS57-600R



CENTURY/LATITUDE ASCENT
SRS60MB



MINI LEVER SQUARE



TURN SQUARE



MINI LEVER ROUND



TURN ROUND



ROLLER LATCH

OPTIONAL VARIANTS

Pull handles, mini levers, and thumb turns ● PVDB ● MB Schlage Ascent & Century/Latitude ● B

Add MB or PVDB to the end of mini lever, turn, or roller latch code for desired finish. Verta only available in PVDB.

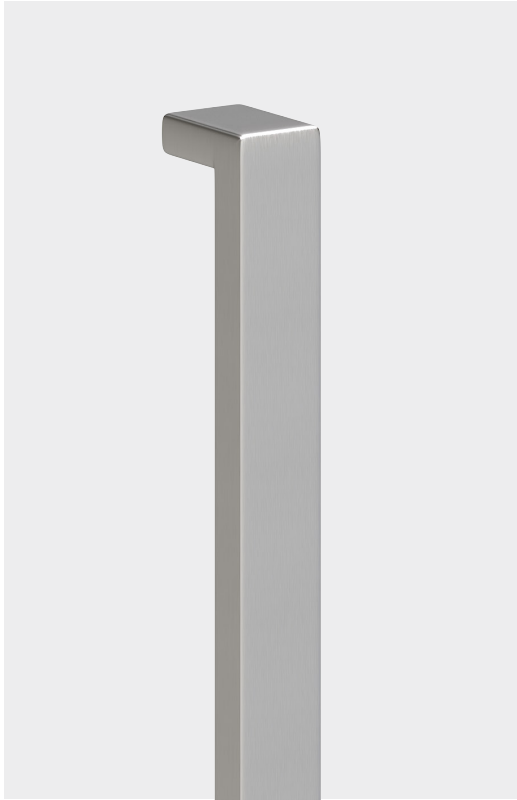
Contact your Sales Consultant for Graphite Entrance Set options.

WORKS WITH ASCENT



Smart deadbolt sets consist of Schlage Ascent Smart Deadbolt, pull handles, and mini lever, turn, or roller latch (applicable sets only). Pull handles (Verta, Andor, Trento, Turin, and Corfu) are made from 316L marine grade stainless steel, and are available in Physical Vapour Deposition - Black (PVDB) and powder coated Matte Black (MB) (Verta is only available in PVDB). Gripset (Century/Latitude) is made from solid forged brass, with a black powder coat finish. Strike available separately for mini lever, turn, or roller latch.

Schlage Electronic Entrance Sets



CLASSIC



VERTA ENCODE

Mini Lever: SRS69-800MLSSS
Turn: SRS69-800SSS
Roller Latch: SRS69-800RSSS

ANDOR ENCODE

Mini Lever: SRS61-625MLSSS
Turn: SRS61-625SSS
Roller Latch: SRS61-625RSSS

TRENTO ENCODE

Mini Lever: SRS64-620MLSSS
Turn: SRS64-620SSS
Roller Latch: SRS64-620RSSS

TURIN ENCODE

Mini Lever: SRS63-600MLSSS
Turn: SRS63-600SSS
Roller Latch: SRS63-600RSSS



CORFU ENCODE

Mini Lever: SRS67-600MLSSS
Turn: SRS67-600SSS
Roller Latch: SRS67-600RSSS

CENTURY/LATITUDE ENCODE

SRS60SNP

OPTIONAL VARIANTS

Pull handles, mini levers, and thumb turns ● SSS Schlage Encode and Century/Latitude ● SNP

WORKS WITH ENCODE



Smart deadbolt sets consist of Schlage Encode™ Smart Wi-Fi Deadbolt, pull handles, and mini lever, turn, or roller latch (applicable sets only). Pull handles in Satin Stainless Steel (Verta, Andor, Trento, Turin, and Corfu) are made from 316L marine grade stainless steel. Gripset (Century/Latitude) is made from solid forged brass, with a Satin Nickel Plate finish. Strike available separately for mini lever, turn, or roller latch.



Credit: Dennis Radermacher - Lightforge



Mechanical

SUBTLE LUSTRE IS EDGY AND ALLURING, BUT NEVER GRANDIOSE

The timeless and graceful look of a mechanical entrance solution provides that European feel, blending form with function to complement the style of your home. The Schlage range of mechanical entrance solutions offers grand pull handle designs, elegant entrance sets, deadbolts, mini levers, and thumb turns. Sophistication at your fingertips.

Schlage Mechanical Entrance Sets



BLACK



VERTA

Mini Lever (four point): SRS49-800
 Mini Lever (two point): SRS29-800
 Turn (two point): SRS19-800

ANDOR

Mini Lever (four point): SRS41-625
 Mini Lever (two point): SRS21-625
 Turn (two point): SRS11-625

TRENTO

Mini Lever (four point): SRS44-620
 Mini Lever (two point): SRS24-620
 Turn (two point): SRS14-620

TURIN

Mini Lever (four point): SRS43-600
 Mini Lever (two point): SRS23-600
 Turn (two point): SRS13-600



CORFU

Mini Lever (four point): SRS47-600
 Mini Lever (two point): SRS27-600
 Turn (two point): SRS17-600

CENTURY/LATITUDE

Deadbolt: SRL4SSMB
 Gripset: SRL32205

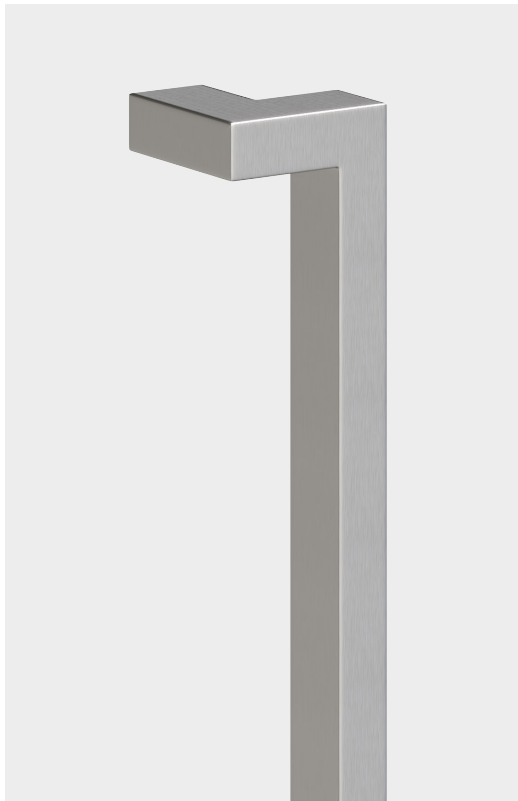
OPTIONAL VARIANTS

Pull handles, mini levers, thumb turns, and escutcheons ● PVDB ● MB Century / Latitude ● B

Add MB or PVDB to the end of mini lever or turn code for desired finish. Verta only available in PVDB.

Entrance sets consist of pull handles, Virtus mortice lock (two or four point), escutcheon, and mini lever or turn. Pull handles (Verta, Andor, Trento, Turin, and Corfu) are made from 316L marine grade stainless steel, and are available in Physical Vapour Deposition - Black (PVDB) and powder coated Matte Black (MB) (Verta is only available in PVDB). Gripset (Century/Latitude) is made from solid forged brass, with a black powder coat finish. Strike available separately for mini lever, turn, or roller latch. Euro cylinders available separately.

Schlage Mechanical Entrance Sets



CLASSIC



VERTA

Mini Lever (four point): SRS49-800SSS
 Mini Lever (two point): SRS29-800SSS
 Turn (two point): SRS19-800SSS

ANDOR

Mini Lever (four point): SRS41-625SSS
 Mini Lever (two point): SRS21-625SSS
 Turn (two point): SRS11-625SSS

TRENTO

Mini Lever (four point): SRS44-620SSS
 Mini Lever (two point): SRS24-620SSS
 Turn (two point): SRS14-620SSS

TURIN

Mini Lever (four point): SRS43-600SSS
 Mini Lever (two point): SRS23-600SSS
 Turn (two point): SRS13-600SSS



CORFU

Mini Lever (four point): SRS47-600SSS
 Mini Lever (two point): SRS27-600SSS
 Turn (two point): SRS17-600SSS

CENTURY/ORBIT

SRL14214

BOSTON

RBENTGSS

OPTIONAL VARIANTS

Pull handles, mini levers, thumb turns, and escutcheons ● SSS Century/Orbit and Boston entrance set ● SCP

Entrance sets consist of pull handles, Virtus mortice lock (two or four point), escutcheon, and mini lever or turn. Pull handles (Verta, Andor, Trento, Turin, and Corfu) are made from 316L marine grade stainless steel. Gripsets (Century/Orbit and Boston) are made from solid forged brass, with a Satin Chrome Plate finish. Strike available separately for mini lever, turn, or roller latch. Euro cylinders available separately.



For more than a century, Schlage has helped protect what matters most – peace of mind.

Trusted in over 40 million homes, we strive to enhance everyday life by delivering door hardware and access control solutions focused on reliable experiences, modern simplicity, thoughtful innovation, and a dedication to craftsmanship. Where some see just a door, we see an opportunity to help turn a home into a haven.

Trust your home to Schlage.

ALLEGION (NEW ZEALAND) LIMITED

Freephone 0800 477 869
Email nzinfo@allegion.com
www.allegion.co.nz

ABOUT ALLEGION™

Allegion (NYSE: ALLE) is a global pioneer in security and access solutions that help keep people safe where they live, learn, work and connect. Our experts design innovative products that bring together trusted security, convenient access and advanced technology.

For more, visit www.allegion.com

Amazon, Alexa and all related logos are trademarks of Amazon.com, Inc. or its affiliates.
Google is a trademark of Google LLC.

