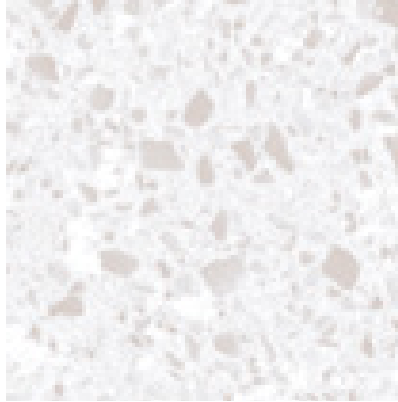

Alaska

Porcelain Stone[®]

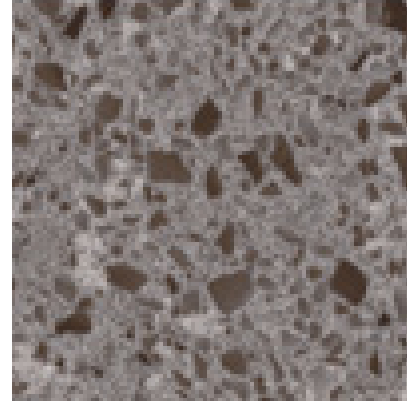
Available Colors



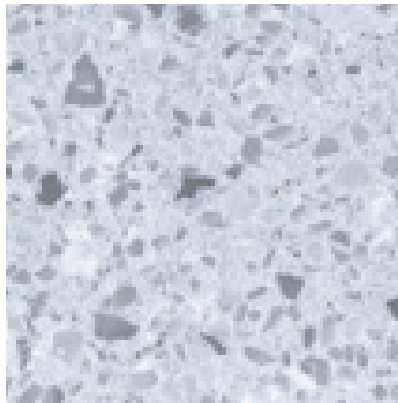
ASK01 ▶ Ice



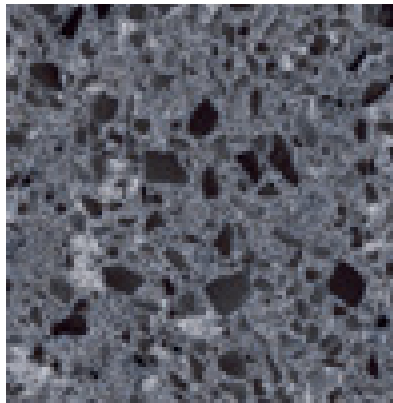
ASK02 ▶ Bone



ASK03 ▶ Mink



ASK04 ▶ Glacier



ASK05 ▶ Tundra

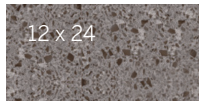
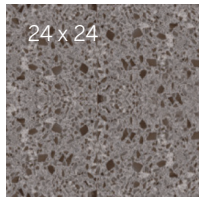
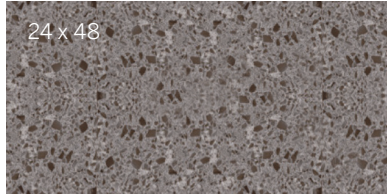
Features and Benefits

- Alaska is available in 5 colors with a modern Terrazzo design.
- Incorporates a single finish that combines matte and shine for a shimmering aesthetic reminiscent of the natural terrazzo from ancient Italy.
- Coordinates with RetroActive 2.0 colorway.
- Cove base and bullnose trim allow for fully finished looks.
- Coordinating 2x2 and unique 12-piece polygon mosaic
- Green Squared certified and made in the USA.

Alaska

Porcelain Stone[®]

Sizes (Shown in ASK03)



Get Planked!

Our Porcelain Stone[®] products are available in popular plank shapes with no minimum order and quick fulfillment.

See website for more details and sizes.



Sizes & Finishes

Field Tile

Available in all colors

Nominal (in)	Actual (mm)	Thickness (mm)	Finish
12 x 24	297 x 597	10.5	UPS
24 x 24	597 x 597	10.5	UPS
24 x 48	597 x 1197	10.5	UPS

Crossville recommends a grout joint of 3mm.

Actual measurements stated in inches indicate tile is calibrated (non-rectified).

Actual measurements stated in mm indicate tile is rectified.

Mosaics

Available in all colors

Nominal (in)	Nominal Size (in)	Sheet Size (in)	Thickness (mm)	Finish
2 x 2 Square Mosaic	12 x 12	298 x 298	10.5	UPS
Polygon Mosaic	13 x 15	341 x 385	10.5	UPS

*Mounted on 12 x 12 sheet

Coordinating Trim

Nominal (in)	Actual (mm)	Thickness (mm)	Finish
6 x 12 Cove Base	150 x 297	10	UPS
4 x 24 Single Bullnose	97 x 597	10.5	UPS



6 x 12 Cove Base



4 x 24 Bullnose

Product Performance

Breaking Strength	>500 lbf	ASTM C648
Bond Strength	>200 psi	ASTM C482
Chemical Resistance	Unaffected	ASTM C650
Frost Resistance	Resistant	ASTM C1026
Water Absorption	<0.20%	ASTM C373
Scratch Hardness	7	Mohs Scale

Wet Dynamic Coefficient of Friction Range

UPS	0.42 - 0.52	AcuTest sm
-----	-------------	-----------------------

Shade & Texture Index

Alaska has a shade variation of V2.

V1	V2	V3	V4	V1 Uniform appearance
				V2 Slight Variation
				V3 Moderate Variation
				V4 Substantial Variation

This porcelain tile product is produced with a V2 variation. Expect that the amount of color and texture on each piece may vary slightly. Inspect the product upon delivery and for best results, blend tile from several cartons during installation.



Alaska

Crossville, Inc.

PO Box 1168
Crossville, TN
38557

Phone 931.484.2110
Fax 931.456.2956
E-Mail Crossc@CrossvilleInc.com
Web CrossvilleInc.com

Environmentally Conscious

Alaska contains a minimum of 4% pre-consumer recycled content and is manufactured by Crossville® using proprietary processes. Crossville recycles nearly 12 million pounds of previously discarded filtrate and fired tile waste. In addition to its own fired waste recycling, Crossville also accepts and recycles reclaimed, previously installed tile through its Tile Take-Back™ program. For more information, visit CrossvilleInc.com/green.

Recommended Use

Alaska is recommended for interior floors, walls, countertops, and exterior walls in both residential and commercial applications. Alaska is not recommended for exterior horizontal surfaces or exterior paving. If offset pattern is required for tiles 15 inches or longer, Crossville® recommends an offset of not greater than 33%. See CrossvilleInc.com for detailed installation instructions.

Wet area use Mosaics

Crossville® produces Alaska 2 x 2 and Polygon Mosaics with the Cross-Sheen finish. The AcuTestsm wet Dynamic COF of Alaska is 0.42 - 0.52. Their small 2 x 2 size ensures frequent grout joints which provides traction and drainage. Crossville cannot control situations involving incorrect installation, improper slope to the drain for elimination of standing water and poor surface cleaning. This information is provided so that customers may make a realistic and informed decision when comparing Alaska to other tile products in wet area environments, such as residential/commercial bathrooms, showers, and interior pool decks.

Information listed here is subject to change. Please refer to CrossvilleInc.com for the latest, most accurate information.

Care and Maintenance

Regular cleaning is the best way to keep Alaska tile looking good for years to come. Use clean, hot water (combined with a household cleaner for more aggressive cleaning). Rinse thoroughly and dry with a soft cloth. No waxes are needed. More information regarding the care and maintenance of Crossville® products is available at CrossvilleInc.com.

Hydrotect

Our porcelain tiles are available with Hydrotect. Crossville's revolutionary invisible coating harnesses the power of light, water, and oxygen to create the best defence against dirt and pollution. Whether indoors or out, floors and walls stay cleaner, providing a superior experience in any space. For complete details check our website at CrossvilleInc.com.



CrossvilleInc.com

If you want a better idea of what Crossville tile would look like in a particular room setting, simply visit our website and click on Cross-Vision. This powerful software tool allows you to visualize different types of Crossville tile. In addition, you'll find comprehensive information about Crossville's entire portfolio of products. You can also learn about the latest styles and trends from industry experts, download detailed care and maintenance instructions for our various products, or browse electronic versions of Crossville's product brochures. So whether you need information about Crossville products or tile in general, please visit us at CrossvilleInc.com. Information listed here is subject to change.

National Accounts

For over 20 years we have been offering Porcelain tile to commercial customers at National Accounts pricing programs with special discounts. The National Accounts department provides materials forecasting, sales support and samples.

Our Warranty

Crossville Inc. guarantees that its products will meet or exceed the performance specifications outlined in ANSI A137.1- 2012 and in the performance data section of the Crossville, Inc. general product catalog. For complete details check our website at CrossvilleInc.com.

Trade Organizations



Environmentally Aware

