

Westell® | CS19-BBC-003

NFPA Compliant Battery Back-Up Cabinet



General Information

Westell's CS19-BBC-003 is a compact size battery cabinet designed for use in Public Safety applications to house up to two 160AH of battery capacity in a red, wall mountable, NEMA3R cabinet.

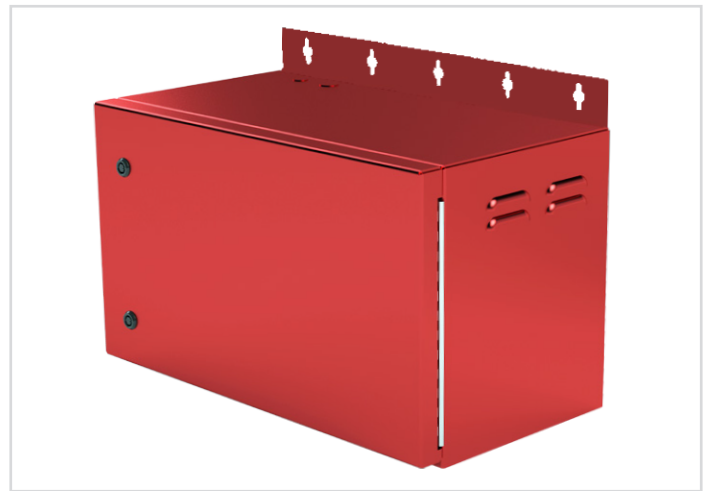
The battery cabinet comes complete with everything needed for installation including conduit fittings, wire, and terminals. Short circuit protection is provided by a circuit breaker inside the cabinet which also provides a convenient way to test for charger fail alarm.

Product Highlights

- Supports up to 24 hour of backup runtime for Westell ProtectLink™ and PS Enhanced Series Class B BDAs
- Sized to support up to two 160AH batteries (CS19-PYL12V160FT batteries recommended). Batteries are not included.
- DIN rail mounted DC breaker
- UL2524 compliant
- NFPA 1221 compliant
- NEMA-3R rated enclosure
- Wall mount
- Light-weight welded, aluminum, red powder-coated construction

Applications

- Battery back-up enclosure for Westell:
 - ProtectLink™:
 - Class A and Class B BDAs, CS40-Series
 - Optical Remote Units, CS40-734834-00D-BR and CS40-734834-00D-AR
 - Optical Master and Radio Module, CS40-OPTMASTER and CS40- OPTMRADIOMOD
 - PS Enhanced:
 - Class B BDAs, CS14-720-820 and CS14-722-822
- Can also be used to house batteries for any other BDA requiring 24VDC back-up.



CS19-BBC-003

Ordering information

Part Number	Description
CS19-BBC-003	NEMA3R rated battery cabinet for use with new CS40 Series ProtectLink™ class A/B BDAs plus enhanced Class B eBDA models, batteries ordered separately.

Included Accessories

- 15A single pole DIN rail mount DC breaker (mounted to internal DIN rail)
- 72" 14 AWG stranded black and red wire for battery connection (installed on the DIN rail DC breaker)
- 14" 14 AWG stranded yellow wire (for serial connection of batteries)
- (4) 18-14 AWG terminal rings
- (1) ¼" liquid tight cord grip
- (1) ½" NPT cord grip
- (6) Hex bolt ¼ 20 x 1 stainless steel mounting hardware with washers

Batteries, Available Separately

Part Number	Description
CS19-PYL12V45FS	12VDC, 45 AH battery - must order 2 for 24VDC operation
CS19-PYL12V100FT	12VDC, 100 AH battery - must order 2 for 24VDC operation
CS19-PYL12V160FT	12VDC, 160 AH battery - must order 2 for 24VDC operation



Westell® | CS19-BBC-003

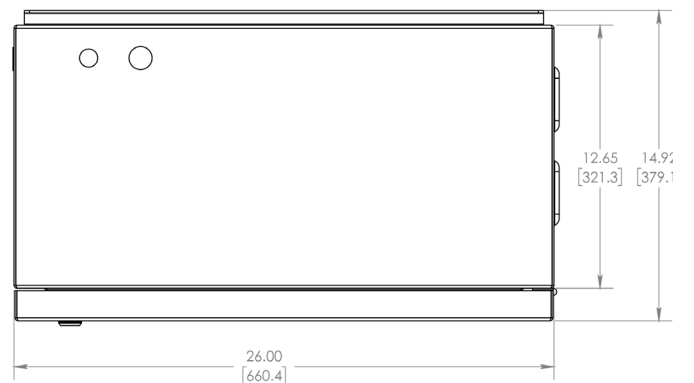
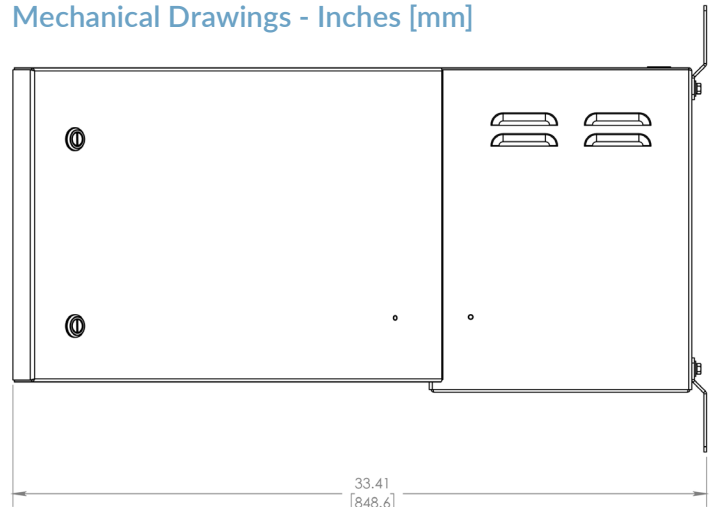
NFPA Compliant Battery Back-Up Cabinet



Specifications

Input / Charge Voltage	28.75 VDC nominal, provided by the BDA charging system.
Output / Load Voltage	24 VDC nominal
Back-Up Runtime	Up to 24 hours with properly sized batteries.
Cabinet Dimensions (H x W x D)	15.63" x 26" x 14" (without mounting brackets)
Operating Temperature	0° to 50°C
Weight Cabinet	41 lbs. (without batteries)
Weather Resistance	NEMA 3R
Mounting Type	Wall mount
Enclosure Lock	Door latch; slotted. Open using a 3/8" flat blade screwdriver.
Finish	Red powder-coated paint

Mechanical Drawings - Inches [mm]



Battery Selectory Chart

12 Hour

Up to 180 watts	(2) CS19-PYLV45FS 45AH
180 to 250 watts	(2) CS19-PYLV100FT 100AH

24 Hour

Up to 90 watts	(2) CS19-PYLV45FS 45AH
90 to 200 watts	(2) CS19-PYLV100FT 100 AH
200 to 250 watts	(2) CS19-PYLV160FT 160 AH

