

Discover the serene sensibilities of Agio™, a tile that artfully depicts the weathered wonder of clay in wilderness-inspired hues. Featuring a wide variety of alluring colors, five sizes, including an on-trend 2" x 47", and three fashion-forward deco's, this collection is sure to enliven any space. Mix and match for endless possibilities for floor and wall designs that soothe the soul.

AGIO™
Glazed Porcelain





Bianco**



Frassino**



Corda**



Vaso**



Affum**



Duna**



Rino



Granata



Senape



Erba



Menta



Turchino



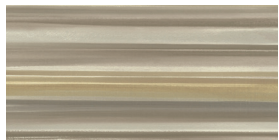
Petro



Noga



Lava**



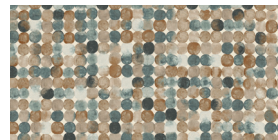
Ura Deco*



Dutti Deco*



Equ Deco*



Ovale Deco*



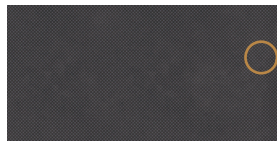
Impianti Deco*



Linea Deco



Herbar Deco



Knit Lava

Knit Pattern
Available in All Solid Slim Colors:
12x24 & 24x47



*24"x47" Slim: Dutti Deco, Ovale Deco, Impianti Deco, Equ Deco & Ura Deco

Sizes									
	47" x 109" Slim 47.09" x 109.25"	47" x 47" 47.09" x 47.09"	24" x 47" 23.50" x 47.09"	24" x 47" Slim 23.50" x 47.09"	24" x 24" 23.50" x 23.50"	12" x 24" Slim 11.71" x 23.50"	2" x 47" Slim 2.09" x 47.09"	1" x 6" Stacked Mosaic 12" x 12" Mesh 11.75" x 11.75"	3" x 12" Floor SBN
Thickness	6.5mm	10mm	10mm	6.5mm	6.5mm	6.5mm	6.5mm	6.5mm	Check Website
Faces	6	6	12	12 (Solid) 2 (Decos)	6	N/A	N/A	N/A	N/A
Finish	Matte	Matte	Matte	Matte	Matte	Matte	Matte	Matte	Matte
Edge	Rectified	Rectified	Rectified	Rectified	Rectified	Rectified	Rectified	Rectified	Cut/Rounded
Grout Joint Recommendation	1/8"	1/8"	1/8"	1/8"	1/8"	1/8"	1/8"	1/8"	Check Website
Testing	Abrasion Resistance C1027	Breaking Strength C648	Chemical Resistance C650	Water Absorption C373	DCOF ANSI A1371	Scratch Hardness MOHS	Shade Variation Rating	**47"x47" and 24"x47" 10mm only available in Duna, Lava, Bianco, Frassino, Affum, Corda, and Vaso.	
Results*	Class III	>350	Resistant	<0.5%	>0.42	5	V1		

Sustainability Attributes

- Red List Free
- Health Product Declaration (HPD) provided upon request
- Product Packaging is 100% recyclable

Product and Installation Details | ANSI A108.02 Section 4.3.8.2 - For running bond/brick joint patterns utilizing tiles (square or rectangular) where the side being offset is greater than 18" (nominal dimension), the running bond offset will be a maximum of 33% unless otherwise specified by the tile manufacturer. If an offset greater than 33% is specified, specifier and owner must approve mock-up and lippage.



*For more information visit www.emser.com. Always consult a professional for proper usage and installation.

