

WALL



VIRGINIATILE

BRINGING DESIGN TO THE SURFACE SINCE 1928

EVERSON

GLAZED CERAMIC



Product Shown: Everson White





**Everson** is a modern take on hand-formed masonry. Available in six exquisite colors, the pairing of subtle undulation and a bold 4" x 12" size makes this a versatile choice for any fashion-forward design. Straight line or staggered patterns can be installed vertically or horizontally and integrate stylishly with stone, wood and metal elements.

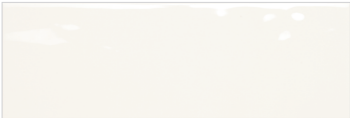
Product Shown: Everson Dark Gray





Product Shown: Everson Light Taupe

COLORS



White  
CTI EVWH \_\_\_\_\_



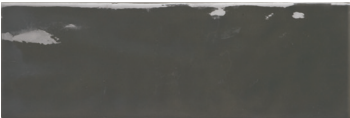
Cream  
CTI EVCR \_\_\_\_\_



Light Taupe  
CTI EVLT \_\_\_\_\_



Light Gray  
CTI EVLG \_\_\_\_\_



Dark Gray  
CTI EVDG \_\_\_\_\_



Black  
CTI EVBK \_\_\_\_\_

SIZE / DESCRIPTION



4" x 13" x 5/16"

TRIM

4" x 13" Bullnose

FINISH

Glossy





VIRGINIATILE

BRINGING DESIGN TO THE SURFACE SINCE 1928

WALL

EVERSON

GLAZED CERAMIC

SIZES	ACTUAL	THICKNESS	FINISH
4" x 13"	4-1/4" x 12-7/8"	5/16"	Glossy

TRIM	ACTUAL	FINISH
4" x 13" Bullnose	4-1/4" x 12-7/8"	Glossy

#### PRODUCT CHARACTERISTICS

	DCOF	Abrasion Resistance	Moisture Absorption	Breaking Strength	Frost Resistance	Scratch Hardness	Chemical Resistance
Wall	N/A	N/A	<20%	120 - 230 lbs	N/A	4.0 - 6.0	Resistant



V1

1

Wall Use  
only



Pre Consumer  
Recycled Materials

SHADE VARIATION KEY	DURABILITY KEY
V1 - Uniform Appearance	1 - Wall Use Only
V2 - Slight Variation	2 - Light Traffic
V3 - Moderate Variation	3 - Residential and Light Commercial
V4 - Substantial Variation	4 - Commercial
	5 - Heavy Commercial

#### SAMPLE EXPRESS

[samplerrequest@virginiatile.com](mailto:samplerrequest@virginiatile.com)

[virginiatile.com](http://virginiatile.com)

