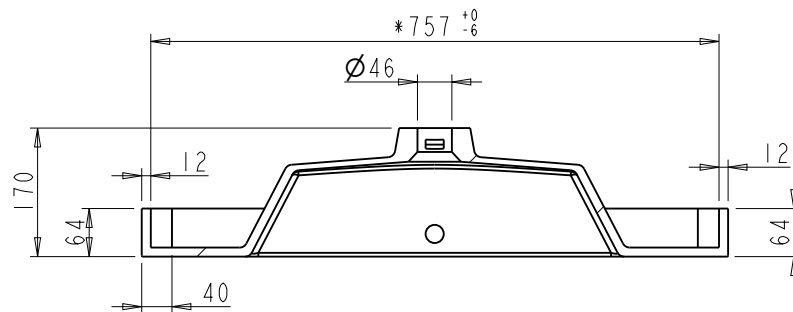
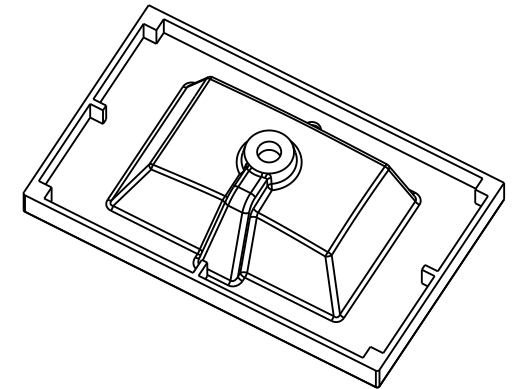
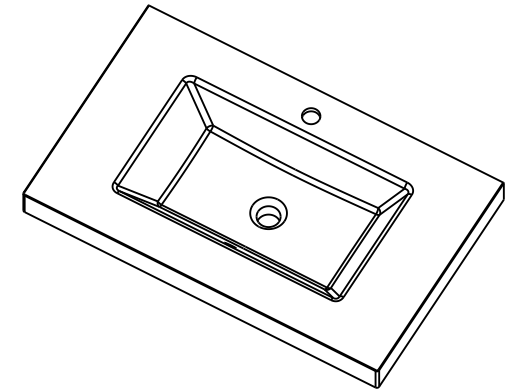
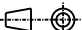
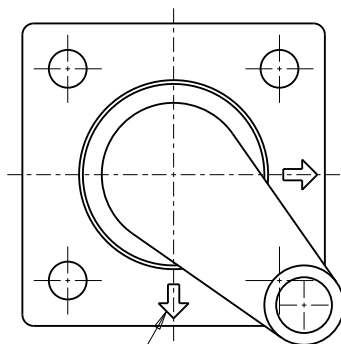
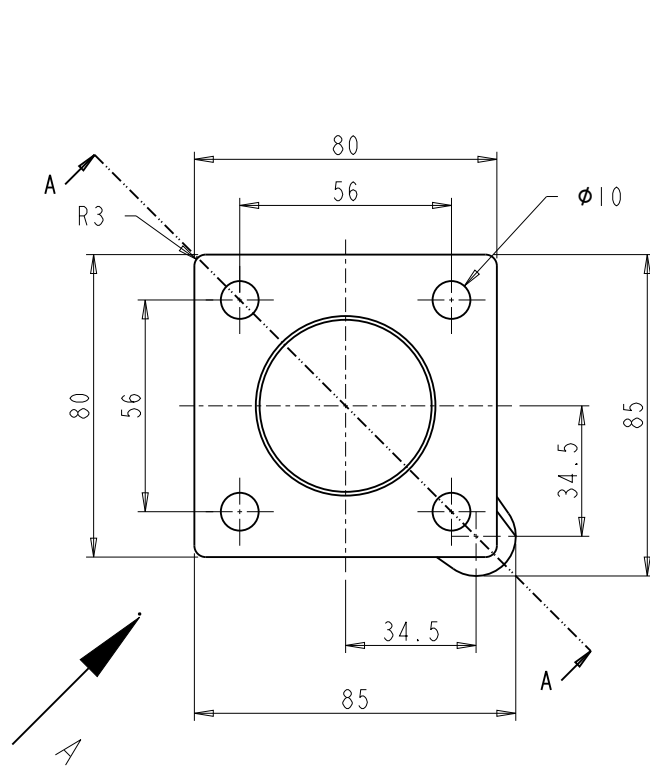


SECTION A-A



SECTION B-B

<div>hardware resources</div> <div>PROPRIETARY AND CONFIDENTIAL</div> <div>THE INFORMATION CONTAINED IN THIS DRAWING IS THE SOLE PROPERTY OF HARDWARE RESOURCES INC. ANY REPRODUCTION IN PART OR AS A WHOLE WITHOUT THE WRITTEN PREMISSION OF HARDWARE RESOURCES INC. IS PROHIBITED.</div>	ITEM#: TOPR3119RE-1		MATERIAL:	
	FINISH:		WEIGHT:	
	<div>TOLERANCE UNLESS OTHERWISE SPECIFIED:</div> <div>X ±0.20 X.X ±0.10 X.XX ±0.05 ANGULAR: ±0.5°</div> <div>DO NOT SCALE DRAWING</div>		PROJECTION	
			<div></div>	
UNITS:		DRAWN BY: Hugo.cai		DATE: Apr-14-23
SIZE:		APPROVED BY:		DATE:
SHEET:		RELEASE LEVEL:		REVISION:



0.5mm deep

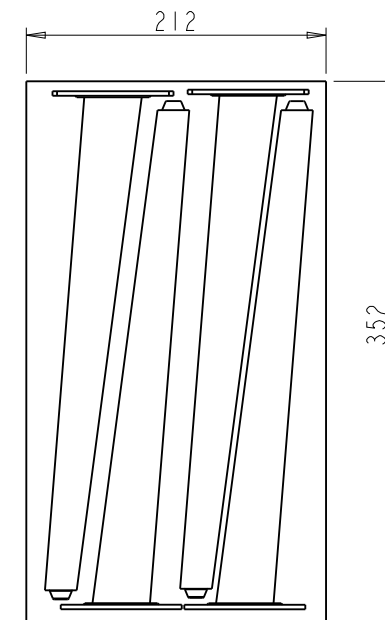


Adjusting screw
Ø1/4"

VIEW A

SECTION A-A
SCALE 2:5

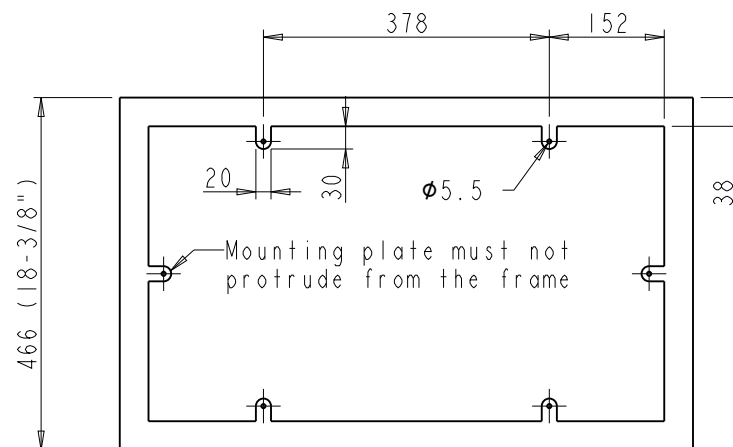
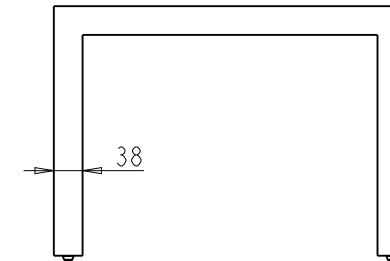
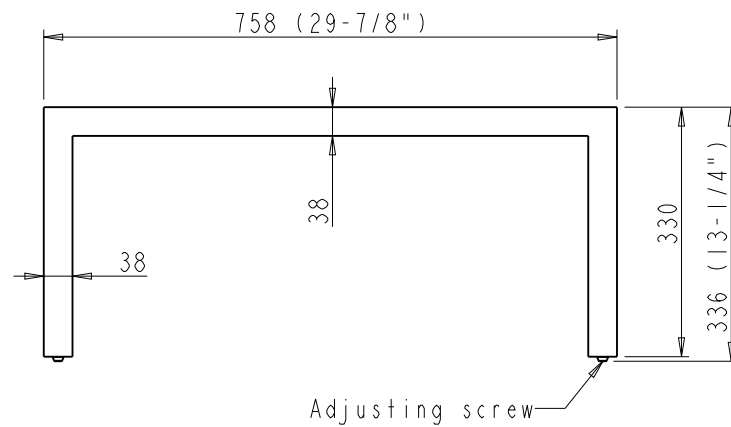
4pcs of Metal legs



NOTE:

MATERIAL: STEEL
FINISH: MB(POWDER COATING)
ACCESSORIES: #1/4-20 Pan Head screw 16pcs

hardware resources PROPRIETARY AND CONFIDENTIAL THE INFORMATION CONTAINED IN THIS DRAWING IS THE SOLE PROPERTY OF HARDWARE RESOURCES INC. ANY REPRODUCTION IN PART OR AS A WHOLE WITHOUT THE WRITTEN PERMISSION OF HARDWARE RESOURCES INC. IS PROHIBITED.	ITEM#: VNLEGPEN4		MATERIAL:	
	FINISH:		WEIGHT:	
	TOLERANCE UNLESS OTHERWISE SPECIFIED: X ±0.20 X.X ±0.10 X.XX ±0.05 ANGULAR: ±0.5° DO NOT SCALE DRAWING		UNITS:	
	SIZE:		DRAWN BY: Hugo.cai	
SHEET:		APPROVED BY:		DATE: Aug-24-23
RELEASE LEVEL:		REVISION:		



NOTE:

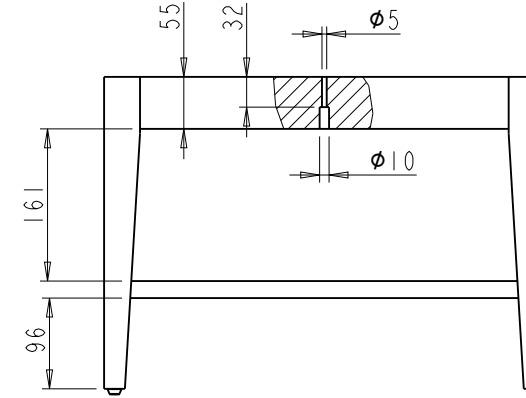
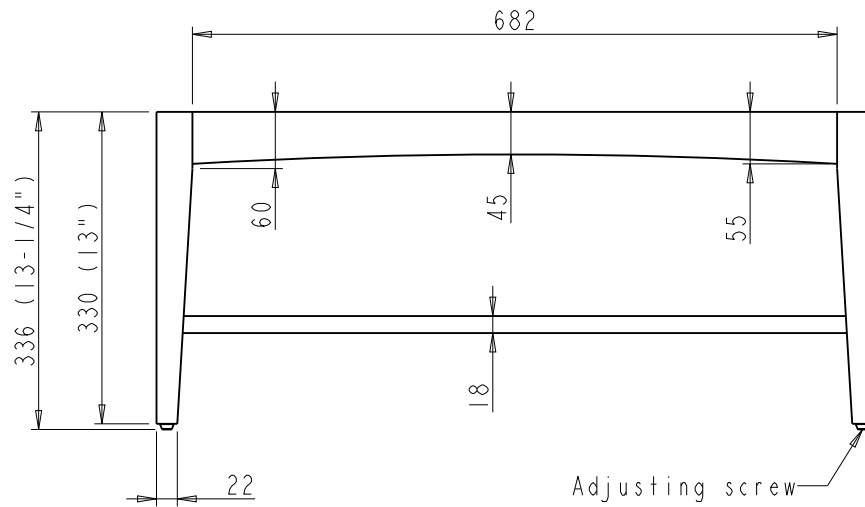
MATERIAL: STEEL

FINISH: MB(POWDER COATING)

MATERIAL THICKNESS: 1.5MM

ACCESSORIES:#8x5/8" Pan Head wood screw 6pcs

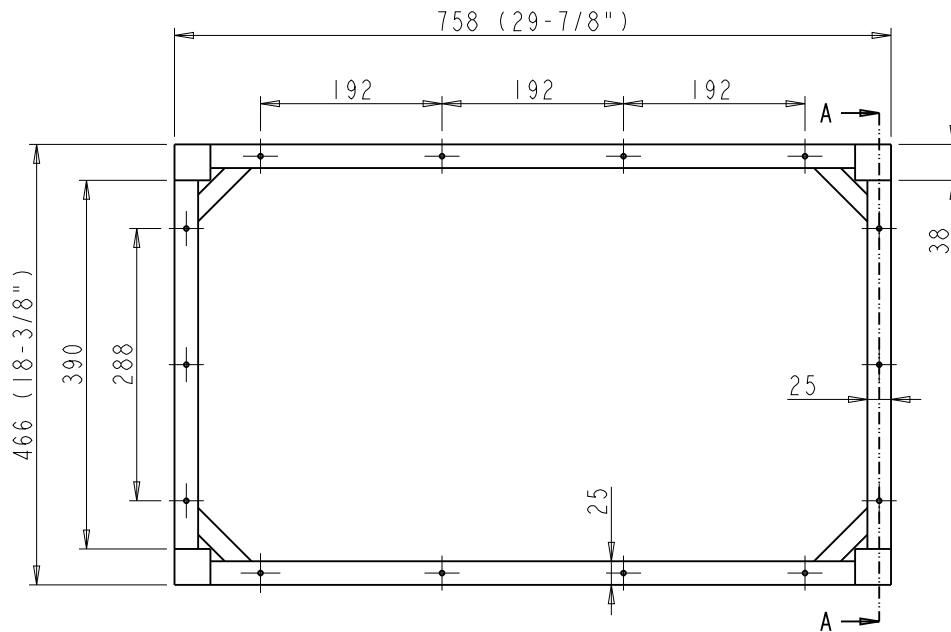
<div>hardware resources</div> <div>PROPRIETARY AND CONFIDENTIAL</div> <div>THE INFORMATION CONTAINED IN THIS DRAWING IS THE SOLE PROPERTY OF HARDWARE RESOURCES INC. ANY REPRODUCTION IN PART OR AS A WHOLE WITHOUT THE WRITTEN PERMISSION OF HARDWARE RESOURCES INC. IS PROHIBITED.</div>	ITEM#: VNLEGSQ30		MATERIAL:	
	FINISH:		WEIGHT:	
	TOLERANCE UNLESS OTHERWISE SPECIFIED: <div>X ±0.20 X.X ±0.10 X.XX ±0.05 ANGULAR: ±0.5°</div> <div>DO NOT SCALE DRAWING</div>		PROJECTION	
			DRAWN BY: Hugo.cai	DATE: Aug-25-23
UNITS:		APPROVED BY:	DATE:	
SIZE:		RELEASE LEVEL:	REVISION:	
SHEET:				



SECTION A-A

NOTE:

ACCESSORIES: #8x45 Pan Head wood screw 14pcs



Item number	Finish
VNLEGWD30WH	White
VNLEGWD30NO	Natural Oak
VNLEGWD30DW	Dark Walnut
VNLEGWD30BS	Blue Steel

hardware resources PROPRIETARY AND CONFIDENTIAL THE INFORMATION CONTAINED IN THIS DRAWING IS THE SOLE PROPERTY OF HARDWARE RESOURCES INC. ANY REPRODUCTION IN PART OR AS A WHOLE WITHOUT THE WRITTEN PERMISSION OF HARDWARE RESOURCES INC. IS PROHIBITED.	ITEM#: VNLEGWD30		MATERIAL:	
	FINISH:		WEIGHT:	
	TOLERANCE UNLESS OTHERWISE SPECIFIED: X ±0.20 X.X ±0.10 X.XX ±0.05 ANGULAR: ±0.5°		UNITS:	
	DO NOT SCALE DRAWING		DRAWN BY: Hugo.cai	
DATE: Aug-28-23		APPROVED BY:		DATE:
SHEET:		RELEASE LEVEL:		REVISION: