

Installation Guide

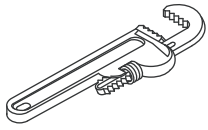
Bath Drain

Français, page“ Français-1”
Español, página“ Español-1”

THE BOLD LOOK
OF **KOHLER**®

1409060-2-A

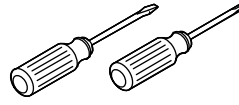
Tools and Materials



Pipe
Wrench



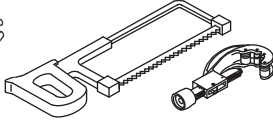
Adjustable
Wrench



Assorted
Screwdrivers



Pliers



Hacksaw or
Tubing Cutter



Plumbers
Putty

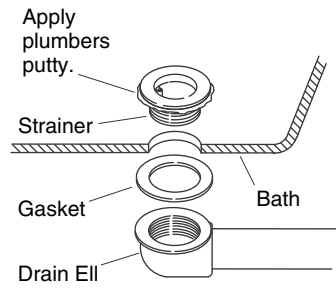


Thread
Sealant
Tape

Plus:
• Trap

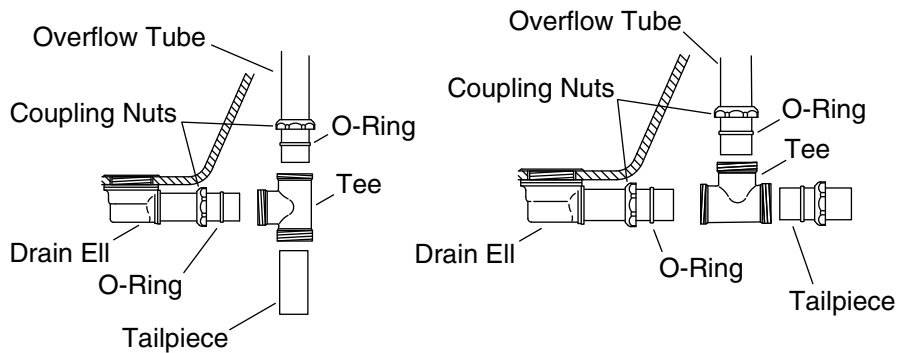
Before You Begin

- Follow all local plumbing and building codes.
- Turn off the main water supplies.
- Carefully inspect the fittings for damage before installing.
- For replacement installations, remove the wall covering from the drain end of the bath and remove the existing drain.
- The overflow ell and drain ell tubes may need to be cut for proper fit. Dry fit or measure and cut them to the proper length. If cutting is needed, remove any burrs from the tubes.



1. Install the Drain Ell

- Apply a ring of plumbers putty or other sealant around the underside of the strainer according to the putty manufacturer's instructions.
- Set the gasket between the drain ell and the underside of the bath.
- Thread the strainer into the drain ell until snug. Do not fully tighten at this time.



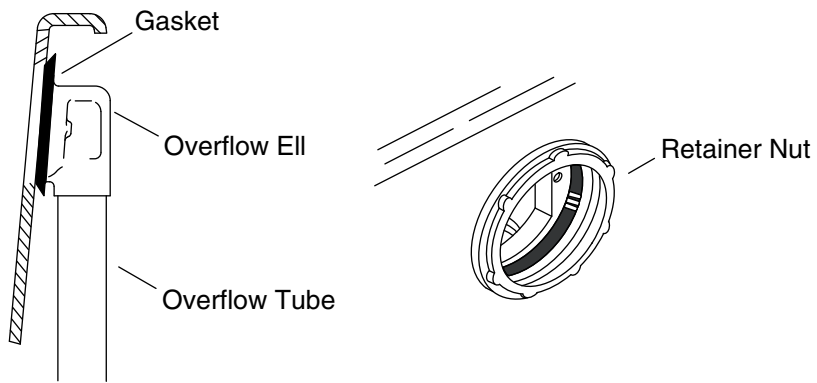
Through-the-Floor Installations

Above-the-Floor Installations

2. Install the Tubing

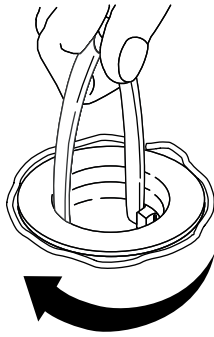
NOTE: The same steps apply to both above-the-floor and through-the-floor installations, but the tee is aligned differently. Align as shown in the illustration.

- Slide a coupling nut, then an O-ring onto the overflow tube.
- Slide a coupling nut, then an O-ring onto the drain ell.
- Align the overflow tube and drain ell with the tee. Align the tee following the illustration for your style of installation.
- Insert the tubes completely into the tee. If necessary cut the overflow tube to the correct length. Remove any burrs.
- Align the tubes and tighten the coupling nuts.
- Insert the tailpiece 1" (25 mm) to 2" (51 mm) inside the trap inlet (not provided). The tailpiece may need to be cut for proper fit.
- Slide a coupling nut and O-ring onto the tailpiece.
- Insert the tailpiece into the tee, then tighten the coupling nut.



3. Install the Overflow Ell

- Apply a ring of plumbers putty or other sealant to the front side of the washer according to the putty/sealant manufacturer's instructions.
- Center the gasket with the opening in the bath wall.
- Tighten the overflow ell to the bath using the retainer nut.

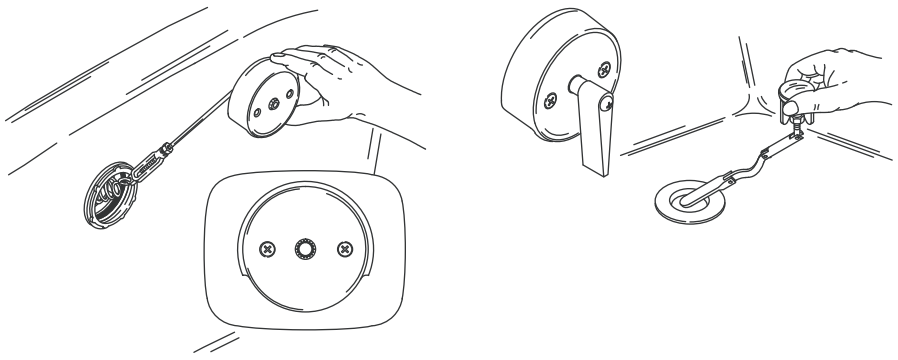


4. Tighten the Drain Ell



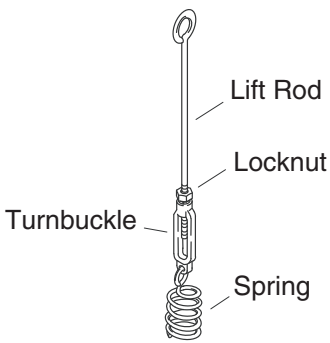
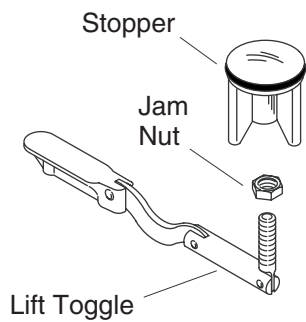
CAUTION: Risk of property damage. Do not reposition the drain ell after the strainer body is tightened. Moving the drain ell may damage the seal created when the strainer is tightened, increasing the risk of leaking.

- Tighten the drain ell securely by inserting plier handles into the top of the strainer.
- Turn the strainer into the drain ell.
- Remove any excess sealant.



5. Install the Lift Rod and Stopper

- Insert the lift rod assembly into the overflow ell.
- Tighten the overflow hood to the overflow ell with the provided screws.
- If necessary, assemble the lever to the overflow hood with the Phillips screw provided.
- With the drain lever in the closed position, insert the stopper assembly into the drain.
- When the drain is opened, the stopper should rise approximately 3/8" (10 mm) above the strainer.



6. Adjustments

- If adjustment is required, remove the stopper assembly from the drain and loosen the jam nut below the stopper.
- Turn the nut counterclockwise to raise the stopper or clockwise to lower the stopper.
- Tighten the nut.
- If sufficient clearance cannot be obtained by adjusting the stopper, remove the lift rod assembly and loosen the locknut.
- Rotate the turnbuckle counterclockwise to lengthen the lift rod or clockwise to shorten the lift rod.
- Tighten the locknut, reinstall the lift rod assembly and check the clearance.

7. Complete the Installation

- Make sure all connections are tight.
- Open the drain.
- Turn on the main water supply and check for leaks.

Warranty

Need help? Contact our Customer Care Center.

USA/Canada: 1-800-4KOHLER (1-800-456-4537), Mexico: 001-800-456-4537

For service parts information, visit kohler.com/serviceparts.

For care and cleaning information, visit kohler.com/clean.

This product is covered under the **One-Year Limited Warranty**, found at kohler.com/warranty. For a hardcopy of warranty terms, contact the Customer Care Center.