



## ASC Engineered Solutions

**CONNECT WITH US**

**U.S:** 800-301-2701

**INTERNATIONAL:** +31-53-572-5570

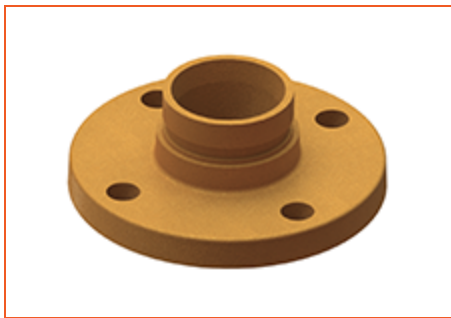
**CANADA:** 800-661-8998

**LATIN AMERICA:** 708-534-1414

**EMAIL:** [marketing@asc-es.com](mailto:marketing@asc-es.com)

### 7788 4 PTD GRV FLANGE ADAPTER

The Gruvlok Fig. 7788 Flange Adapter allows for direct connection of Class 125 or Class 150 flanged components to a grooved piping system. The Gruvlok Flange Adapter provides an alternative method of connecting to flanged component than the traditional Fig. 7012 Gruvlok Flange. The Gruvlok Flange Adapter provides a raised serrated face flange connection with a shorter overall length than Anvil's Fig. 7084 Flange x Groove Nipple.



#### Specifications

<b>Industry Standards/Certifications</b>	NSF-61 and Low Lead Approved, cULus Listed, FM Approved
<b>Type</b>	Flange Adapter
<b>Style</b>	Grooved
<b>Nominal Size</b>	4 in
<b>Housing Material</b>	Ductile Iron conforming to ASTM A 536, Grade 65-45-12
<b>Coatings</b>	Rust inhibiting paint – Color: ORANGE
<b>Raised Face</b>	Cast raised face
<b>Max. Working Pressure</b>	300 psi

**Product Number** 0390202067

**UPC Code** 69029106138

**Weight** 10.68 lb