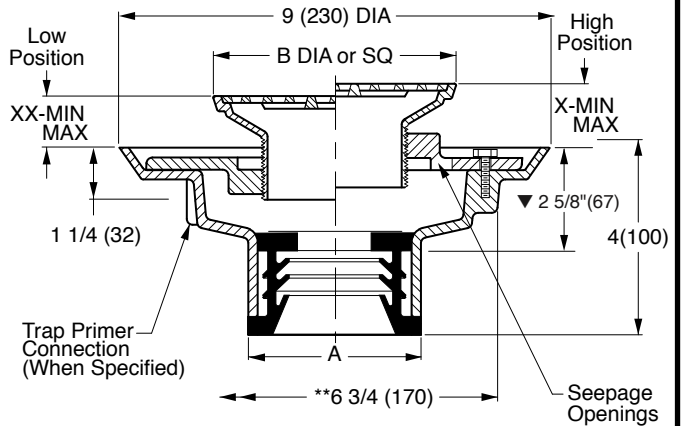
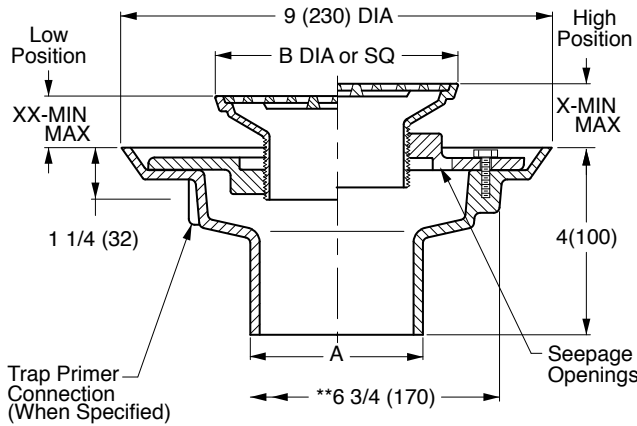


FLOOR OR SHOWER DRAINS WITH ADJUSTABLE STRAINER HEADS

FUNCTION: General service floor drain for use in showers, toilets, kitchens and other finished areas where foot traffic is expected. The round top strainer head is used for all types of poured finished floors. The square top is particularly adaptable to floors that are finished in material of square or straight line pattern. Reversible flashing collar permits adjustment of the strainer to meet finished floor level.



A (Pipe Size) = 02(50), 03(75), 04(100), 05(125) or 06(150)

NO-HUB OUTLET

- Fig. 2005Y.....(A) ROUND TOP
- Fig. 2005Y.....(B) SQUARE TOP

| Outlet Size | Nickel Bronze Strainer Head |
|-------------|-----------------------------|
| ▲ 02(50) | 05(125) DIA or SQ |
| ▲ 03(75) | 06(150) DIA or SQ |
| ▲ 04(100) | 08(205) DIA or SQ |

SPEEDI-SET OUTLET

- Fig. 2005L.....(A) ROUND TOP
- Fig. 2005L.....(B) SQUARE TOP

| Strainer Size B | *Collar In High Position X | | *Collar In Low Position XX | | Free Area SQ IN (SQ CM) | |
|-----------------|----------------------------|-----------|----------------------------|-----------|-------------------------|----------|
| | MIN | MAX | MIN | MAX | ROUND | SQUARE |
| 05 (125) | 1 1/4(32) | 2 1/4(57) | 3/4(19) | 1 5/8(41) | 7(45) | 6.5(42) |
| 06 (150) | 1 1/4(32) | 2 1/4(57) | 3/4(19) | 1 5/8(41) | 9(58) | 12.5(81) |
| 07 (180) | 1 1/4(32) | 2 1/4(57) | 7/8(22) | 1 7/8(48) | 14(90) | 11(71) |
| 08 (205) | 1 1/2(38) | 2 1/2(64) | 1(25) | 1 7/8(48) | 17(110) | 14(90) |
| *09 (230) | 1 1/2(38) | 2 3/8(60) | 1(25) | 1 7/8(48) | 18(116) | 16(103) |
| *10 (255) | 1 1/2(38) | 2 3/8(60) | 1(25) | 1 7/8(48) | 23(48) | 16(103) |

- ▼ This dimension to internal stop of speedi-set gasket.
- Add 3/8"(10) to all min/max dimensions for round strainers.
- * Collar is reversible to obtain extreme high and low strainer positions.
- ** Not available for 5"(125) size strainer.
- ** MIN 6 3/4"(170) hole required for core drilled application.

REGULARLY FURNISHED:

Duco Cast Iron Body with Flashing Collar and Adjustable Strainer Head as Indicated by Suffix Letter Selected.

VARIATIONS:

- Flapper Type Backwater Valve -V
- Hinged Grate -H
- L Speedi-Set Service Weight 2(50), 3(75) & 4"(100) only
- LXH Speedi-Set Extra Heavy 2(50), 3(75) & 4"(100) only
- Sediment Bucket -B
- Trap Primer Connection -P050 1/2" (13) & -P075 3/4" (19)
- Vandal Proof Screws -U
- Wide Flanged Strainer (Specify Fig. DX2005)
- T Threaded Outlet
- Heelproof Grate -HP -AHP (Round) or -BHP (Square)
- Quad Close Trap Seal (Specify Fig. 2692)

OPTIONAL MATERIALS:

- Bronze Body -BB
- Chrome Plated Strainer -CP
- Galvanized Cast Iron Body -G
- Nickel Bronze Strainer -NB
- Polished Bronze Strainer -PB
- Stainless Steel (Specify Fig. 9700-A)

NOTE: Dimensions shown in parentheses are in millimeters.

- ▲ Meets ASME Standard A112.6.3-2001 02(50), 03(75) or 04"(100) sizes only.

SEE PM0457 FOR OPTIONAL STRAINER HEADS.

DRAWING NUMBER S2005

SIZE A

SCALE: NONE

DATE: 5-17-85

APPROVED BY: TD

CHECKED BY: TD

DRAWN BY: PJ

2005

FIGURE NUMBER

| REV. | DATE | DESCRIPTION | BY | CKD. BY |
|------|----------|------------------------|-----|---------|
| R | 6-10-15 | Revised Variations | TBW | CL |
| Q | 11-18-11 | Rev. Dwg., Var. | TBW | CR |
| P | 11-20-09 | Revised Variations | RN | BW |
| N | 12/18/08 | Addition to Variations | JJ | BW |

| WEIGHT POUNDS | VOLUME CUBIC FEET | FIGURE NUMBER |
|---------------|-------------------|---------------|
| | | 2005 |

WE CAN ASSUME NO RESPONSIBILITY FOR USE OF SUPERSEDED OR VOID DATA

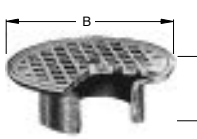
DIMENSIONS ARE SUBJECT TO MANUFACTURERS TOLERANCE AND CHANGE WITHOUT NOTICE

OPTIONAL STRAINER HEADS

G
 DRAWING NUMBER PM0457 SH 1 of 2
 SIZE A
 SCALE NONE
 DATE: 5-17-85
 APPROVED BY: TD
 CHECKED BY: TD
 DRAWN BY: PJ
 2010 SERIES OPTIONAL STRAINER HEADS
 FIGURE NUMBER

ASSUME NO RESPONSIBILITY OR USE OF SUPERSEDED OR VOID DATA
 DIMENSIONS ARE SUBJECT TO MANUFACTURERS TOLERANCE AND CHANGE WITHOUT NOTICE

ROUND STRAINER



MATERIALS:
 Chrome Plated -CP
 Polished Bronze -PB
 Nickel Bronze -NB

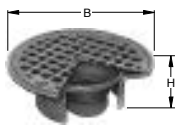
VARIATIONS:
 •Hinged Grate (Specify Suffix -AH)
 Sediment Bucket -B
 Vandal Proof Screws -U

| B DIA | 05 (125) | 06 (150) | 07 (180) | 08 (205) | 09 (230) | 10 (255) |
|-------|------------|------------|------------|------------|------------|------------|
| H | 2 (51) | 2 (51) | 2 1/4 (57) | 2 1/2 (64) | 2 1/2 (64) | 2 3/4 (70) |
| X MIN | 1 1/4 (32) | 1 1/4 (32) | 1 1/4 (32) | 1 1/2 (38) | 1 1/2 (38) | 1 1/2 (38) |
| X MAX | 2 1/4 (57) | 2 1/4 (57) | 2 1/4 (57) | 2 1/2 (64) | 2 1/2 (64) | 2 3/4 (70) |

Specify Type, Size & Finish eg: A05NB
 *Not available for 05" (125) size

SUFFIX -A

FLAPPER TYPE BACKWATER VALVE



FUNCTION: Provides backwater protection at point where protection is needed.

MATERIALS:
 Chrome Plated -CP
 Polished Bronze -PB
 Nickel Bronze -NB

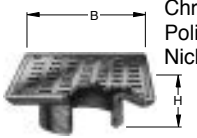
VARIATIONS:
 •Hinged Grate (Specify Suffix -AH)
 Vandal Proof Screws -U

| B DIA | 05 (125) | 06 (150) | 07 (180) | 08 (205) |
|-------|------------|------------|------------|------------|
| H | 2 (51) | 2 (51) | 2 1/4 (57) | 2 1/2 (64) |
| X MIN | 1 1/4 (32) | 1 1/4 (32) | 1 1/4 (32) | 1 1/2 (38) |
| X MAX | 2 1/4 (57) | 2 1/4 (57) | 2 1/4 (57) | 2 1/2 (64) |

Specify Type, Size & Finish eg: AV05NB
 *Not available for 05" (125) size

SUFFIX -AV

SQUARE STRAINER



MATERIALS:
 Chrome Plated -CP
 Polished Bronze -PB
 Nickel Bronze -NB

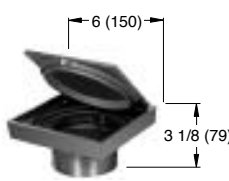
VARIATIONS:
 Flapper Type Backwater Valve (Specify Suffix -BV) 05 (125), 06 (150), 07 (180) or 08" (205) sizes only
 •Hinged Grate (Specify Suffix -BH)
 Sediment Bucket -B
 Vandal Proof Screws -U

| B DIA | 05 (125) | 06 (150) | 07 (180) | 08 (205) | 09 (230) | 10 (255) |
|-------|------------|------------|------------|------------|------------|------------|
| H | 2 (51) | 2 (51) | 2 1/4 (57) | 2 1/2 (64) | 2 1/4 (57) | 2 1/4 (57) |
| X MIN | 1 1/4 (32) | 1 1/4 (32) | 1 1/4 (32) | 1 1/2 (38) | 1 1/2 (38) | 1 1/2 (38) |
| X MAX | 2 1/4 (57) | 2 1/4 (57) | 2 1/4 (57) | 2 1/2 (64) | 2 1/4 (57) | 2 3/8 (60) |

Specify Type, Size & Finish eg: B05NB
 *Not available for 05" (125) size

SUFFIX -B

STRAINER HEAD w/SQUARE HINGED COVER



MATERIALS:
 Chrome Plated -CP
 Polished Bronze -PB
 Nickel Bronze -NB

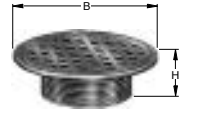
VARIATIONS:
 Gasketed Water Tight Cover -GC
 Secured Cover -SC
 Secondary Strainer Grate-SG

Specify Type, Size & Finish eg: BSNB

SUFFIX -BS

REINFORCED ROUND STRAINER

FUNCTION: Used in finished floors where light wheeled loads are anticipated.



MATERIALS:
 Chrome Plated -CP
 Polished Bronze -PB
 Nickel Bronze -NB

VARIATIONS:
 Flapper Type Backwater Valve (Specify Suffix -CV)
 Sediment Bucket -B
 Vandal Proof Screws -U

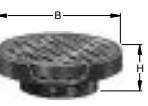
| B DIA | 05 (125) | 06 (150) | 08 (205) | 10 (255) |
|-------|------------|------------|------------|------------|
| H | 2 (51) | 2 (51) | 2 1/2 (64) | 2 3/4 (70) |
| MIN | 1 1/4 (32) | 1 1/4 (32) | 1 1/2 (38) | 1 7/8 (48) |
| MAX | 2 1/4 (57) | 2 1/4 (57) | 2 1/2 (64) | 2 3/4 (70) |

Specify Type, Size & Finish eg: C06NB

SUFFIX -C

REINFORCED TRACTOR STRAINER

FUNCTION: Used in finished floors where medium weight wheeled loads are anticipated and loose set non-tilt tractor grate is desired.



MATERIALS:
 Cast Iron -CI
 Chrome Plated -CP
 Polished Bronze -PB
 Nickel Bronze -NB

VARIATIONS:
 Flapper Type Backwater Valve (Specify Suffix -DV or -EV)
 Sediment Bucket -B
 Vandal Proof Screws -U

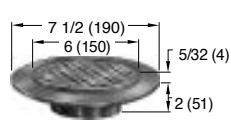
| SUFFIX | B DIA | H | X | |
|--------|----------|------------|------------|------------|
| -D | 07 (180) | 3 1/4 (83) | 2 5/8 (67) | 3 1/2 (89) |
| -E | 09 (230) | 3 1/2 (89) | 2 3/4 (70) | 3 1/2 (89) |

Specify Type, Size & Finish eg: D09PB
 E09PB

SUFFIX -D-E

TILE FLANGE

FUNCTION: Provides integral flange set 5/32" (4) below rim to receive floor covering. Flange may have option of tapped holes for securing pan and gasket.



MATERIALS:
 Chrome Plated -CP
 Polished Bronze -PB
 Nickel Bronze -NB

VARIATIONS:
 Flapper Type Backwater Valve (Specify Suffix -FV)
 Holes in Flange -SH
 Sediment Bucket -B
 Vandal Proof Screws -U

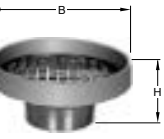
| X | |
|------------|------------|
| MIN | MAX |
| 1 1/4 (32) | 2 1/8 (54) |

Specify Type, Size & Finish eg: F06NB

SUFFIX -F

ADJUSTABLE STRAINER HEAD

FUNCTION: Used in a non-traffic area when a funnel type strainer head is required and space does not allow use of the 3500 series funnel. The extended rim allows use as an anti-flood and anti-splash drip pan.



VARIATIONS:
 Flapper Type Backwater Valve (Specify Suffix -F37V or F38V)

MATERIALS:
 Cast Iron -CI
 Chrome Plated -CP
 Galvanized Cast Iron -G
 Polished Bronze -PB
 Nickel Bronze -NB

| SUFFIX | -F37 | -F38 |
|--------|------------|------------|
| B DIA | 07 (180) | 09 (230) |
| H | 3 1/4 (83) | 3 1/2 (89) |
| X MIN | 2 5/8 (67) | 2 3/4 (70) |
| X MAX | 3 1/2 (89) | 3 1/2 (89) |

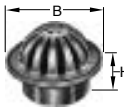

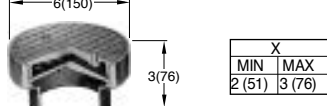
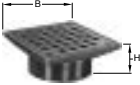

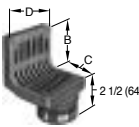
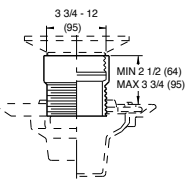
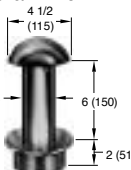
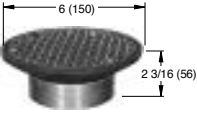
Specify Type, Size & Finish eg: F37NB F38CP

SUFFIX -F37-F38

| | | | | | |
|------|---------|---------------------|-----|---------|---|
| REV. | DATE | DESCRIPTION | BY | CKD. BY | FIGURE NUMBER 2010 SERIES OPTIONAL STRAINER HEADS 1 of 2 |
| | 10-4-01 | Revised Suffix-BS | RN | CL | |
| | 8-24-99 | Revised | TBW | | |
| | 6-11-99 | Revised Tables | CMD | BS | |
| | 11-4-97 | Added Nickel Bronze | EMB | BS | |

NOTE: Dimensions shown in parentheses are in millimeters.

OPTIONAL STRAINER HEADS

| DRAWING NUMBER PM0457 SH 2 of 2 | SIZE A | SCALE NONE | | | | | | | | | | | | | | | | | | | | | | | | | | | | | | | | | | | | | | | | | | | | | | | | | | | | | | | | | | | | | | | | | | | | | | | | | | | |
|---|---|---------------------|-------------|-----------------------|------------|------------|---------|------------|------------|---------------------|------------|------------|---------------------|---|------------|------------|--|------------|------------|------------|---|----------|---|--------|--------|------------|------------|-------|------------|------------|------------|------------|------------|------------|------------|------------|------------|---|------------|------------|------------|------------|--------|------------|------------|------------|------------|------------|------------|-------|------------|------------|------------|--------|------------|------------|--|--------|---|---|---|---|--|--|--|--|---------|----|------------|------------|-------------|-----------------------|----|-------------|-------------|-------------|-----------------------|
| <p>LOW DOME STRAINER</p> <p>FUNCTION: Used in gutters and recessed areas where excessive debris build-up is expected. Dome insures drainage even when partly covered.</p> <p>MATERIALS: Chrome Plated -CP Polished Bronze -PB Nickel Bronze -NB</p> <p>VARIATIONS: Flapper Type Backwater Valve (Specify Suffix -GV) Sediment Bucket -B Vandal Proof Screws -U</p>  <table border="1" style="font-size: small;"> <tr><td>B DIA</td><td>05 (125)</td><td>06 (150)</td><td>08 (205)</td></tr> <tr><td>H</td><td>2 (51)</td><td>2 (51)</td><td>2 1/2 (64)</td></tr> <tr><td>MIN</td><td>1 1/4 (32)</td><td>1 1/4 (32)</td><td>1 1/2 (38)</td></tr> <tr><td>MAX</td><td>2 1/4 (57)</td><td>2 1/4 (57)</td><td>2 1/2 (64)</td></tr> </table> <p>SUFFIX -G Specify Type, Size & Finish eg: G08PB</p> | B DIA | 05 (125) | 06 (150) | 08 (205) | H | 2 (51) | 2 (51) | 2 1/2 (64) | MIN | 1 1/4 (32) | 1 1/4 (32) | 1 1/2 (38) | MAX | 2 1/4 (57) | 2 1/4 (57) | 2 1/2 (64) | <p>SOLID HINGED COVER</p> <p>FUNCTION: Used in areas where intermittent drain use is required. Solid cover prevents intrusion of chips, saw-dust, etc., which are swept up before cover is opened for washdown. The secondary strainer prevents debris from entering the waste line.</p> <p>MATERIALS: Cast Iron -CI Chrome Plated -CP Polished Bronze -PB Nickel Bronze -NB</p> <p>VARIATIONS: Flapper Type Backwater Valve (Specify Suffix -GV) Vandal Proof Screws -U</p>  <table border="1" style="font-size: small;"> <tr><td>B DIA</td><td>05 (125)</td><td>06 (150)</td><td>07 (180)</td><td>08 (205)</td></tr> <tr><td>H</td><td>2 (51)</td><td>2 (51)</td><td>2 1/4 (57)</td><td>2 1/2 (64)</td></tr> <tr><td>X MIN</td><td>1 1/4 (32)</td><td>1 1/4 (32)</td><td>1 1/4 (32)</td><td>1 1/2 (38)</td></tr> <tr><td>X MAX</td><td>2 1/4 (57)</td><td>2 1/4 (57)</td><td>2 1/4 (57)</td><td>2 1/2 (64)</td></tr> </table> <p>SUFFIX -H Specify Type, Size & Finish eg: H05CP</p> | B DIA | 05 (125) | 06 (150) | 07 (180) | 08 (205) | H | 2 (51) | 2 (51) | 2 1/4 (57) | 2 1/2 (64) | X MIN | 1 1/4 (32) | 1 1/4 (32) | 1 1/4 (32) | 1 1/2 (38) | X MAX | 2 1/4 (57) | 2 1/4 (57) | 2 1/4 (57) | 2 1/2 (64) | <p>SPANNER WRENCH COVER</p> <p>FUNCTION: Solid gas tight, vandal proof, threaded cover for areas where intermittent drain use is required.</p> <p>MATERIALS: Chrome Plated -CP Polished Bronze -PB Nickel Bronze -NB</p> <p>VARIATIONS: Flapper Type Backwater Valve (Specify Suffix -JV) Sediment Bucket -B</p>  <table border="1" style="font-size: x-small;"> <tr><td colspan="2">X</td></tr> <tr><td>MIN</td><td>MAX</td></tr> <tr><td>2 (51)</td><td>3 (76)</td></tr> </table> <p>SUFFIX -J Specify Type, Size & Finish eg: J06NB</p> | X | | MIN | MAX | 2 (51) | 3 (76) | | | | | | | | | | | | | | | | | | | | | | | | | | | | | | | | | |
| B DIA | 05 (125) | 06 (150) | 08 (205) | | | | | | | | | | | | | | | | | | | | | | | | | | | | | | | | | | | | | | | | | | | | | | | | | | | | | | | | | | | | | | | | | | | | | | | | | | |
| H | 2 (51) | 2 (51) | 2 1/2 (64) | | | | | | | | | | | | | | | | | | | | | | | | | | | | | | | | | | | | | | | | | | | | | | | | | | | | | | | | | | | | | | | | | | | | | | | | | | |
| MIN | 1 1/4 (32) | 1 1/4 (32) | 1 1/2 (38) | | | | | | | | | | | | | | | | | | | | | | | | | | | | | | | | | | | | | | | | | | | | | | | | | | | | | | | | | | | | | | | | | | | | | | | | | | |
| MAX | 2 1/4 (57) | 2 1/4 (57) | 2 1/2 (64) | | | | | | | | | | | | | | | | | | | | | | | | | | | | | | | | | | | | | | | | | | | | | | | | | | | | | | | | | | | | | | | | | | | | | | | | | | |
| B DIA | 05 (125) | 06 (150) | 07 (180) | 08 (205) | | | | | | | | | | | | | | | | | | | | | | | | | | | | | | | | | | | | | | | | | | | | | | | | | | | | | | | | | | | | | | | | | | | | | | | | | |
| H | 2 (51) | 2 (51) | 2 1/4 (57) | 2 1/2 (64) | | | | | | | | | | | | | | | | | | | | | | | | | | | | | | | | | | | | | | | | | | | | | | | | | | | | | | | | | | | | | | | | | | | | | | | | | |
| X MIN | 1 1/4 (32) | 1 1/4 (32) | 1 1/4 (32) | 1 1/2 (38) | | | | | | | | | | | | | | | | | | | | | | | | | | | | | | | | | | | | | | | | | | | | | | | | | | | | | | | | | | | | | | | | | | | | | | | | | |
| X MAX | 2 1/4 (57) | 2 1/4 (57) | 2 1/4 (57) | 2 1/2 (64) | | | | | | | | | | | | | | | | | | | | | | | | | | | | | | | | | | | | | | | | | | | | | | | | | | | | | | | | | | | | | | | | | | | | | | | | | |
| X | | | | | | | | | | | | | | | | | | | | | | | | | | | | | | | | | | | | | | | | | | | | | | | | | | | | | | | | | | | | | | | | | | | | | | | | | | | | | |
| MIN | MAX | | | | | | | | | | | | | | | | | | | | | | | | | | | | | | | | | | | | | | | | | | | | | | | | | | | | | | | | | | | | | | | | | | | | | | | | | | | | |
| 2 (51) | 3 (76) | | | | | | | | | | | | | | | | | | | | | | | | | | | | | | | | | | | | | | | | | | | | | | | | | | | | | | | | | | | | | | | | | | | | | | | | | | | | |
| <p>REINFORCED SQUARE STRAINER</p> <p>FUNCTION: Used in finished floors where some light wheeled traffic is anticipated.</p> <p>MATERIALS: Chrome Plated -CP Polished Bronze -PB Nickel Bronze -NB</p> <p>VARIATIONS: Flapper Type Backwater Valve (Specify Suffix -KV) Sediment Bucket -B Vandal Proof Screws -U</p>  <table border="1" style="font-size: small;"> <tr><td>B SQ</td><td>05 (125)</td><td>06 (150)</td><td>07 (180)</td><td>08 (205)</td></tr> <tr><td>H</td><td>2 (51)</td><td>2 (51)</td><td>2 1/4 (57)</td><td>2 1/2 (64)</td></tr> <tr><td>X MIN</td><td>1 1/4 (32)</td><td>1 1/4 (32)</td><td>1 1/4 (32)</td><td>1 1/2 (38)</td></tr> <tr><td>X MAX</td><td>2 1/4 (57)</td><td>2 1/4 (57)</td><td>2 1/4 (57)</td><td>2 1/2 (64)</td></tr> </table> <p>SUFFIX -K Specify Type, Size & Finish eg: K07CP</p> | B SQ | 05 (125) | 06 (150) | 07 (180) | 08 (205) | H | 2 (51) | 2 (51) | 2 1/4 (57) | 2 1/2 (64) | X MIN | 1 1/4 (32) | 1 1/4 (32) | 1 1/4 (32) | 1 1/2 (38) | X MAX | 2 1/4 (57) | 2 1/4 (57) | 2 1/4 (57) | 2 1/2 (64) | <p>RECTANGULAR STRAINER</p> <p>FUNCTION: Used in finished floors where light wheeled loads and or heavy foot traffic are anticipated.</p> <p>MATERIALS: Chrome Plated -CP Polished Bronze -PB Nickel Bronze -NB</p> <p>VARIATIONS: Sediment Bucket -B Vandal Proof Screws -U</p>  <table border="1" style="font-size: x-small;"> <tr><td>SUFFIX</td><td>L</td><td>M</td><td>N</td><td>P</td><td>R</td><td>T</td></tr> <tr><td>B x B'</td><td>4 1/2(115)</td><td>4 7/8(125)</td><td>5 1/4(135)</td><td>5 7/8(148)</td><td>6 1/4(163)</td><td>6 7/8(175)</td></tr> <tr><td>H</td><td>2 1/4 (57)</td><td>2 1/2 (64)</td><td>2 1/4 (57)</td><td>2 1/4 (57)</td><td>2 1/4 (57)</td><td>2 1/4 (57)</td></tr> <tr><td>X MIN</td><td>1 3/8 (35)</td><td>1 7/8 (49)</td><td>1 3/8 (35)</td><td>2 1/8 (54)</td><td>1 3/8 (35)</td><td>2 1/4 (57)</td></tr> <tr><td>X MAX</td><td>2 3/8 (60)</td><td>2 3/4 (70)</td><td>2 3/8 (60)</td><td>3 (76)</td><td>2 3/8 (60)</td><td>3 1/8 (79)</td></tr> </table> <p>SUFFIX -L-M-N-P-R-T Specify Type, Size & Finish eg: LNB</p> | SUFFIX | L | M | N | P | R | T | B x B' | 4 1/2(115) | 4 7/8(125) | 5 1/4(135) | 5 7/8(148) | 6 1/4(163) | 6 7/8(175) | H | 2 1/4 (57) | 2 1/2 (64) | 2 1/4 (57) | 2 1/4 (57) | 2 1/4 (57) | 2 1/4 (57) | X MIN | 1 3/8 (35) | 1 7/8 (49) | 1 3/8 (35) | 2 1/8 (54) | 1 3/8 (35) | 2 1/4 (57) | X MAX | 2 3/8 (60) | 2 3/4 (70) | 2 3/8 (60) | 3 (76) | 2 3/8 (60) | 3 1/8 (79) | <p>ANGLE STRAINER</p> <p>FUNCTION: Shower room drain set at wall and floor junction. Vertical grate openings prevent drain stoppage should flat surface become covered.</p> <p>MATERIALS: Cast Iron -CI Chrome Plated -CP Polished Bronze -PB Nickel Bronze -NB</p> <p>VARIATIONS: Vandal Proof Screws -U</p>  <table border="1" style="font-size: small;"> <tr><td>SUFFIX</td><td>B</td><td>C</td><td>D</td><td>X</td></tr> <tr><td></td><td></td><td></td><td></td><td>MIN MAX</td></tr> <tr><td>-V</td><td>3 1/2 (89)</td><td>3 1/2 (89)</td><td>4 1/2 (115)</td><td>1 5/8 (41) 2 5/8 (67)</td></tr> <tr><td>-W</td><td>6 3/4 (170)</td><td>6 3/4 (170)</td><td>6 1/2 (165)</td><td>1 5/8 (41) 2 5/8 (67)</td></tr> </table> <p>SUFFIX -V-W Specify Type, Size & Finish eg: VPB, WNB</p> | SUFFIX | B | C | D | X | | | | | MIN MAX | -V | 3 1/2 (89) | 3 1/2 (89) | 4 1/2 (115) | 1 5/8 (41) 2 5/8 (67) | -W | 6 3/4 (170) | 6 3/4 (170) | 6 1/2 (165) | 1 5/8 (41) 2 5/8 (67) |
| B SQ | 05 (125) | 06 (150) | 07 (180) | 08 (205) | | | | | | | | | | | | | | | | | | | | | | | | | | | | | | | | | | | | | | | | | | | | | | | | | | | | | | | | | | | | | | | | | | | | | | | | | |
| H | 2 (51) | 2 (51) | 2 1/4 (57) | 2 1/2 (64) | | | | | | | | | | | | | | | | | | | | | | | | | | | | | | | | | | | | | | | | | | | | | | | | | | | | | | | | | | | | | | | | | | | | | | | | | |
| X MIN | 1 1/4 (32) | 1 1/4 (32) | 1 1/4 (32) | 1 1/2 (38) | | | | | | | | | | | | | | | | | | | | | | | | | | | | | | | | | | | | | | | | | | | | | | | | | | | | | | | | | | | | | | | | | | | | | | | | | |
| X MAX | 2 1/4 (57) | 2 1/4 (57) | 2 1/4 (57) | 2 1/2 (64) | | | | | | | | | | | | | | | | | | | | | | | | | | | | | | | | | | | | | | | | | | | | | | | | | | | | | | | | | | | | | | | | | | | | | | | | | |
| SUFFIX | L | M | N | P | R | T | | | | | | | | | | | | | | | | | | | | | | | | | | | | | | | | | | | | | | | | | | | | | | | | | | | | | | | | | | | | | | | | | | | | | | | |
| B x B' | 4 1/2(115) | 4 7/8(125) | 5 1/4(135) | 5 7/8(148) | 6 1/4(163) | 6 7/8(175) | | | | | | | | | | | | | | | | | | | | | | | | | | | | | | | | | | | | | | | | | | | | | | | | | | | | | | | | | | | | | | | | | | | | | | | |
| H | 2 1/4 (57) | 2 1/2 (64) | 2 1/4 (57) | 2 1/4 (57) | 2 1/4 (57) | 2 1/4 (57) | | | | | | | | | | | | | | | | | | | | | | | | | | | | | | | | | | | | | | | | | | | | | | | | | | | | | | | | | | | | | | | | | | | | | | | |
| X MIN | 1 3/8 (35) | 1 7/8 (49) | 1 3/8 (35) | 2 1/8 (54) | 1 3/8 (35) | 2 1/4 (57) | | | | | | | | | | | | | | | | | | | | | | | | | | | | | | | | | | | | | | | | | | | | | | | | | | | | | | | | | | | | | | | | | | | | | | | |
| X MAX | 2 3/8 (60) | 2 3/4 (70) | 2 3/8 (60) | 3 (76) | 2 3/8 (60) | 3 1/8 (79) | | | | | | | | | | | | | | | | | | | | | | | | | | | | | | | | | | | | | | | | | | | | | | | | | | | | | | | | | | | | | | | | | | | | | | | |
| SUFFIX | B | C | D | X | | | | | | | | | | | | | | | | | | | | | | | | | | | | | | | | | | | | | | | | | | | | | | | | | | | | | | | | | | | | | | | | | | | | | | | | | |
| | | | | MIN MAX | | | | | | | | | | | | | | | | | | | | | | | | | | | | | | | | | | | | | | | | | | | | | | | | | | | | | | | | | | | | | | | | | | | | | | | | | |
| -V | 3 1/2 (89) | 3 1/2 (89) | 4 1/2 (115) | 1 5/8 (41) 2 5/8 (67) | | | | | | | | | | | | | | | | | | | | | | | | | | | | | | | | | | | | | | | | | | | | | | | | | | | | | | | | | | | | | | | | | | | | | | | | | |
| -W | 6 3/4 (170) | 6 3/4 (170) | 6 1/2 (165) | 1 5/8 (41) 2 5/8 (67) | | | | | | | | | | | | | | | | | | | | | | | | | | | | | | | | | | | | | | | | | | | | | | | | | | | | | | | | | | | | | | | | | | | | | | | | | |
| <p>EXTENSION ADAPTOR</p> <p>FUNCTION: Used when a strainer head must be raised to accommodate deeper floor fill.</p> <p>REGULARLY FURNISHED: Duco Cast Iron -CI</p> <p>MATERIALS: Cast Bronze -CB Galvanized Cast Iron -G</p>  <p>NOTE: Extension can be stacked for increased maximum adjustment.</p> <p>SUFFIX -X</p> | <p>OVERFLOW WITH STANDPIPE</p> <p>FUNCTION: Used as overflow drain in decorative pools, fish ponds or similar areas. Dome prevents floating objects from entering drain line.</p> <p>MATERIALS: Chrome Plated -CP Nickel Bronze -NB Polished Bronze -PB</p> <p>VARIATIONS: Less Dome -LD Standpipe Height other than 6" (150) (Specify Height)</p>  <table border="1" style="font-size: small;"> <tr><td>SUFFIX</td><td>A</td><td>X</td></tr> <tr><td></td><td>SIZE</td><td>MIN MAX</td></tr> <tr><td>-Y</td><td>2 (51)</td><td>3/4 (19) 2 1/8 (54)</td></tr> <tr><td>-Z</td><td>3 (76)</td><td>3/4 (19) 2 1/8 (54)</td></tr> </table> <p>SUFFIX -Y-Z Specify Type, Size & Finish eg: YCP, ZCP</p> | SUFFIX | A | X | | SIZE | MIN MAX | -Y | 2 (51) | 3/4 (19) 2 1/8 (54) | -Z | 3 (76) | 3/4 (19) 2 1/8 (54) | <p>HEAVY DUTY ADJUSTABLE</p> <p>FUNCTION: Used in finished floors where light wheeled loads and or heavy foot traffic are anticipated.</p> <p>MATERIALS: Polished Bronze -PB Rough Bronze -RB Nickel Bronze -NB</p> <p>VARIATIONS: Flapper Type Backwater Valve (Specify Suffix -69V) Sediment Bucket -B Vandal Proof Screws -U</p>  <p>SUFFIX -69 eg: A06NB-69</p> | | | | | | | | | | | | | | | | | | | | | | | | | | | | | | | | | | | | | | | | | | | | | | | | | | | | | | | | | | | | | | | |
| SUFFIX | A | X | | | | | | | | | | | | | | | | | | | | | | | | | | | | | | | | | | | | | | | | | | | | | | | | | | | | | | | | | | | | | | | | | | | | | | | | | | | |
| | SIZE | MIN MAX | | | | | | | | | | | | | | | | | | | | | | | | | | | | | | | | | | | | | | | | | | | | | | | | | | | | | | | | | | | | | | | | | | | | | | | | | | | |
| -Y | 2 (51) | 3/4 (19) 2 1/8 (54) | | | | | | | | | | | | | | | | | | | | | | | | | | | | | | | | | | | | | | | | | | | | | | | | | | | | | | | | | | | | | | | | | | | | | | | | | | | |
| -Z | 3 (76) | 3/4 (19) 2 1/8 (54) | | | | | | | | | | | | | | | | | | | | | | | | | | | | | | | | | | | | | | | | | | | | | | | | | | | | | | | | | | | | | | | | | | | | | | | | | | | |

| | | | | | | |
|---------------|-----------------------|---|---|---------------------------------|----------------------|---|
| FIGURE NUMBER | J H G F E | 1-17-12 8-24-99 6-11-99 1-22-99 11-4-97 | Rev. Variations of Suffix -J Revised Revised Tables T Strainer was S Strainer Added Nickel Bronze | TBW TBW CMD TBW EMB | AM BS BS BS | FIGURE NUMBER 2010 SERIES OPTIONAL STRAINER HEADS 2 of 2 |
| REV. | DATE | DESCRIPTION | | BY | CKD. BY | |

NOTE: Dimensions shown in parentheses are in millimeters.